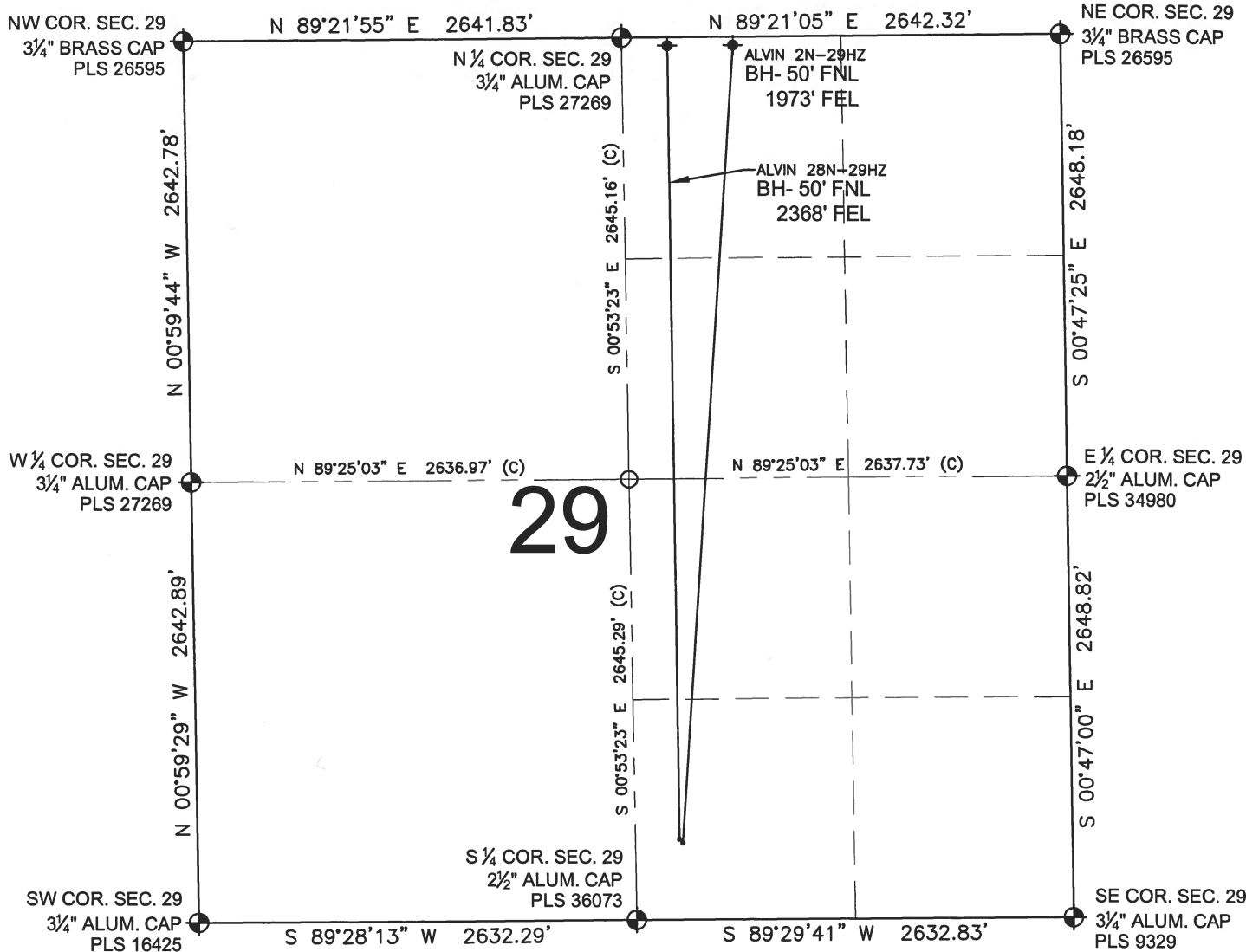


ALVIN 28N-29HZ MULTI-WELL PLAN

SECTION 29, TOWNSHIP 2 NORTH, RANGE 65 WEST, 6TH P.M.



LEGEND

- ⊙ = EXISTING MONUMENT
- = PROPOSED WELL
- ⊕ = BOTTOM HOLE
- ◆ = EXISTING WELL
- BH = BOTTOM HOLE
- = CALCULATED POSITION

NOTES:

ALVIN 2N-29HZ TO BE AT 462' FSL, 2349' FEL.
 BOTTOM HOLE AT 50' FNL & 1973' FEL.
 ALVIN 28N-29HZ TO BE AT 484' FSL, 2368' FEL.
 BOTTOM HOLE AT 50' FNL & 2368' FEL

PREPARED BY:



PFS llc
 Petroleum Field Services, LLC
 7535 Hilltop Circle
 Denver, CO 80221

KERR-MCGEE OIL & GAS ONSHORE LP

FIELD DATE:
10-23-14

DRAWING DATE:
02-05-15

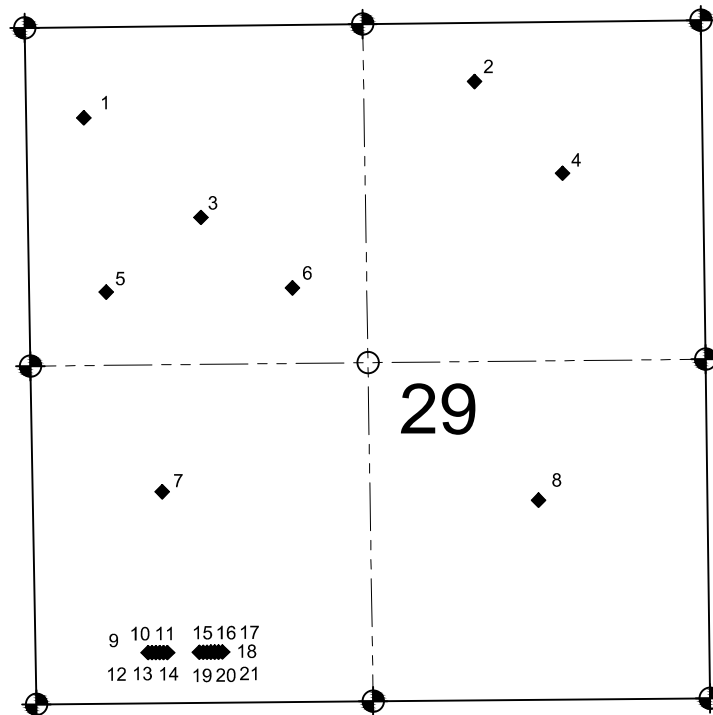
SURFACE LOCATION:

SW 1/4 SE 1/4, SEC. 29, T2N, R65W, 6TH P.M.
 WELD COUNTY, COLORADO



ALVIN 28N-29HZ OFFSET WELL EXHIBIT

SECTION 29, TOWNSHIP 2 NORTH, RANGE 65 WEST, 6TH P.M.



PRODUCING WELLS:

1. DECHANT 11-29, 40.114805° & 104.695663°
2. DECHANT 31-29, 40.115505° & 104.684742°
3. DECHANT USX X29-19, 40.112645° & 104.692419°
4. DECHANT-USX X29-1, 40.113523° & 104.682308°
5. DECHANT USX X29-05, 40.111062° & 104.695084°
6. DECHANT USX X29-06, 40.111114° & 104.689878°
7. UPRR 38 PAN AM T TRUE #1, 40.106768° & 104.693572°
8. UPRC 29-10P, 40.106515° & 104.683061°
9. SUMMIT 34C-32HZ, 40.103321° & 104.694°
10. SUMMIT 30N-29HZ, 40.103321° & 104.693893°
11. SUMMIT 4C-32HZ, 40.10332° & 104.693786°
12. SUMMIT 13N-32HZ, 40.10332° & 104.693679°
13. SUMMIT 29N-32HZ, 40.10332° & 104.693571°
14. SUMMIT 13C-29HZ, 40.103319° & 104.693464°
15. SUMMIT 3C-29HZ, 40.10332° & 104.693571°
16. SUMMIT 35N-32HZ, 40.10332° & 104.692463°
17. SUMMIT 3N-29HZ, 40.103319° & 104.692356°
18. SUMMIT 14C-32HZ, 40.10332° & 104.692249°
19. SUMMIT 28C-29HZ, 40.103321° & 104.692142°
20. SUMMIT 36N-32HZ, 40.103318° & 104.692033°
21. SUMMIT 36C-32HZ, 40.103321° & 104.691927°

ABANDONED WELLS:

LEGEND

- = EXISTING MONUMENT
 = EXISTING WELL
 = CALCULATED POSITION
 = ABANDONED WELL

PREPARED BY:



KERR-MCGEE OIL & GAS ONSHORE LP

FIELD DATE:

01-02-15

SURFACE LOCATION:

SW¼ SE¼, SEC. 29, T2N, R65W, 6TH P.M.
WELD COUNTY, COLORADO

DRAWING DATE:

02-06-15

