

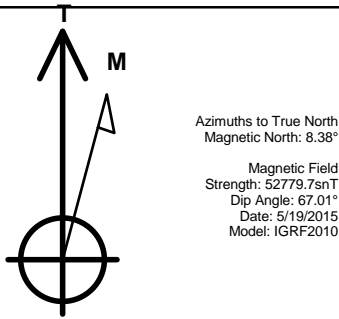
Bayswater Exploration & Production, LLC

Well Name: Hester Farms B-36HC

Surface Location: Hester Farms Pad Sec.31-7N-66W  
North American Datum 1983 , US State Plane 1983 , Colorado Northern Zone  
Ground Elevation: 4915.0  
+N/-S +E/-W Northing Easting Latitude Longitude Slot  
0.0 0.0 1437924.22 3185849.19 40.533579 -104.831379  
RKB - 25' WELL @ 4940.0ft (RKB - 25')

WELLBORE TARGET DETAILS

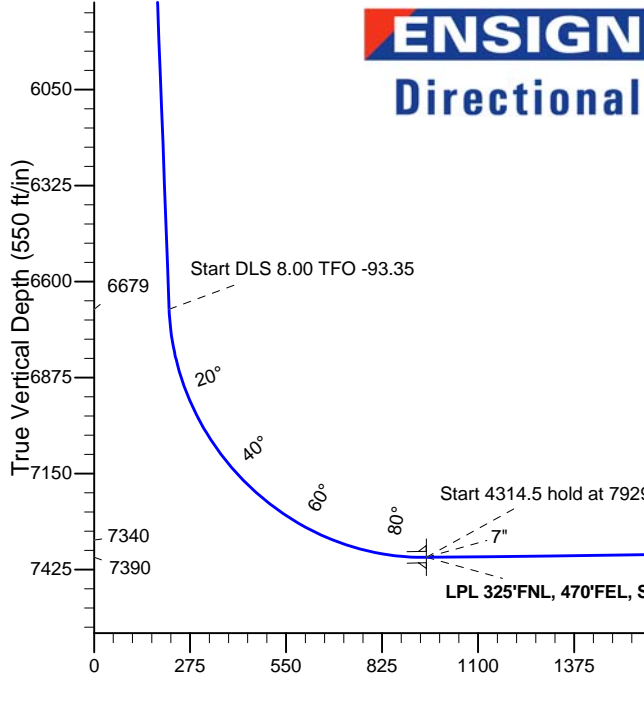
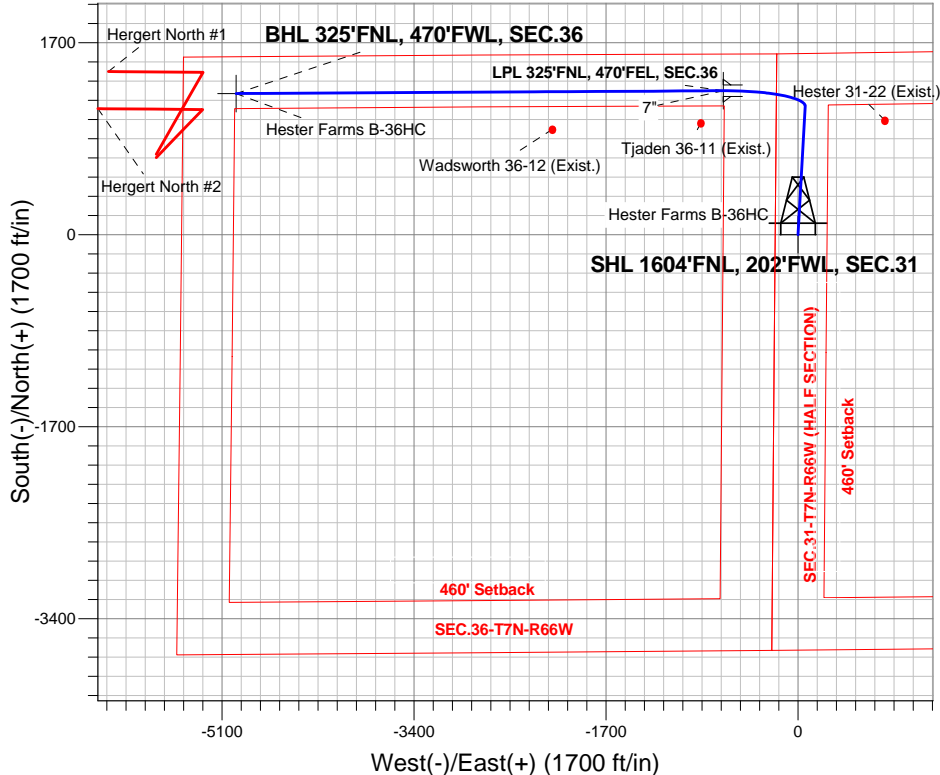
Name	TVD	+N/-S	+E/-W	Shape
SHL 1604'FNL, 202'FWL, SEC.31	1.0	0.0	0.0	Point
BHL 325'FNL, 470'FWL, SEC.36	7340.0	1250.9	-4975.1	Point
LPL 325'FNL, 470'FEL, SEC.36	7390.0	1275.1	-661.0	Point



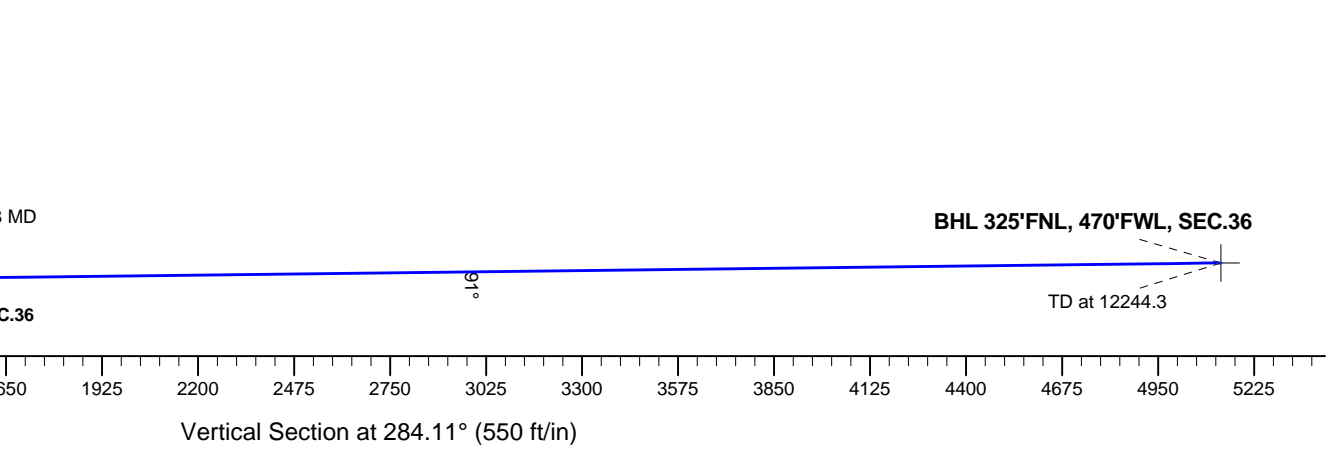
Hester Farms Pad Sec.31-7N-66W  
Hester Farms B-36HC  
Plan #1 (5-06-15)  
10:46, May 19 2015

ANNOTATIONS

TVD	MD	Annotation
400.0	400.0	KOP - Start Build 1.00
1519.1	1526.4	Start 5261.6 hold at 1526.4 MD
6679.4	6788.0	Start DLS 8.00 TFO -93.35
7390.0	7929.8	Start 4314.5 hold at 7929.8 MD
7340.0	12244.3	TD at 12244.3



SECTION DETAILS										
Sec	MD	Inc	Azi	TVD	+N/-S	+E/-W	DLeg	TFace	VSec	Target
1	0.0	0.00	0.00	0.0	0.0	0.0	0.00	0.00	0.0	
2	400.0	0.00	0.00	400.0	0.0	0.0	0.00	0.00	0.0	
3	1526.4	11.26	3.23	1519.1	110.2	6.2	1.00	3.23	20.8	
4	6788.0	11.26	3.23	6679.4	1136.3	64.1	0.00	0.00	214.9	
5	7929.8	90.66	269.68	7390.0	1275.1	-661.0	8.00	-93.35	952.0	LPL 325'FNL, 470'FEL, SEC.36
6	12244.3	90.66	269.68	7340.0	1250.9	-4975.1	0.00	0.00	5130.0	BHL 325'FNL, 470'FWL, SEC.36





# **Bayswater Exploration & Production, LLC**

**SEC.31-T7N-R66W**

**Hester Farms Pad Sec.31-7N-66W**

**Hester Farms B-36HC**

**Wellbore #1**

**Plan: Plan #1 (5-06-15)**

## **Standard Planning Report**

**19 May, 2015**



**BAYSWATER**  
**EXPLORATION & PRODUCTION, LLC**

<b>Database:</b>	Landmark	<b>Local Co-ordinate Reference:</b>	Well Hester Farms B-36HC
<b>Company:</b>	Bayswater Exploration & Production, LLC	<b>TVD Reference:</b>	WELL @ 4940.0ft (RKB - 25')
<b>Project:</b>	SEC.31-T7N-R66W	<b>MD Reference:</b>	WELL @ 4940.0ft (RKB - 25')
<b>Site:</b>	Hester Farms Pad Sec.31-7N-66W	<b>North Reference:</b>	True
<b>Well:</b>	Hester Farms B-36HC	<b>Survey Calculation Method:</b>	Minimum Curvature
<b>Wellbore:</b>	Wellbore #1		
<b>Design:</b>	Plan #1 (5-06-15)		

<b>Project</b>	SEC.31-T7N-R66W, Weld County, Colorado		
<b>Map System:</b>	US State Plane 1983	<b>System Datum:</b>	Mean Sea Level
<b>Geo Datum:</b>	North American Datum 1983		Using Well Reference Point
<b>Map Zone:</b>	Colorado Northern Zone		Using geodetic scale factor

Site						Hester Farms Pad Sec.31-7N-66W											
<b>Site Position:</b>						<b>Northing:</b>			1,437,939.53ft			<b>Latitude:</b>			40.533621		
<b>From:</b>			Lat/Long			<b>Easting:</b>			3,185,849.35ft			<b>Longitude:</b>			-104.831378		
<b>Position Uncertainty:</b>			0.0 ft			<b>Slot Radius:</b>			"			<b>Grid Convergence:</b>			0.43 °		

Well	Hester Farms B-36HC					
Well Position	+N/-S	-15.3 ft	Northing:	1,437,924.22 ft	Latitude:	40.533579
	+E/-W	-0.3 ft	Easting:	3,185,849.19 ft	Longitude:	-104.831379
Position Uncertainty		0.0 ft	Wellhead Elevation:	ft	Ground Level:	4,915.0 ft

<b>Wellbore</b>	Wellbore #1				
<b>Magnetics</b>	<b>Model Name</b>	<b>Sample Date</b>	<b>Declination (°)</b>	<b>Dip Angle (°)</b>	<b>Field Strength (nT)</b>
	IGRF2010	5/19/2015	8.38	67.01	52,780

<b>Design</b>	Plan #1 (5-06-15)			
<b>Audit Notes:</b>				
<b>Version:</b>	<b>Phase:</b>	PROTOTYPE	<b>Tie On Depth:</b>	0.0
<b>Vertical Section:</b>	<b>Depth From (TVD) (ft)</b>	<b>+N/-S (ft)</b>	<b>+E/-W (ft)</b>	<b>Direction (°)</b>
	0.0	0.0	0.0	284.11

<b>Plan Sections</b>										
Measured Depth (ft)	Inclination (°)	Azimuth (°)	Vertical Depth (ft)	+N/-S (ft)	+E/-W (ft)	Dogleg Rate (°/100ft)	Build Rate (°/100ft)	Turn Rate (°/100ft)	TFO (°)	Target
0.0	0.00	0.00	0.0	0.0	0.0	0.00	0.00	0.00	0.00	
400.0	0.00	0.00	400.0	0.0	0.0	0.00	0.00	0.00	0.00	
1,526.4	11.26	3.23	1,519.1	110.2	6.2	1.00	1.00	0.00	3.23	
6,788.0	11.26	3.23	6,679.4	1,136.3	64.1	0.00	0.00	0.00	0.00	
7,929.8	90.66	269.68	7,390.0	1,275.1	-661.0	8.00	6.95	-8.19	-93.35	LPL 325'FNL, 470'F
12,244.3	90.66	269.68	7,340.0	1,250.9	-4,975.1	0.00	0.00	0.00	0.00	BHL 325'FNL, 470'F

<b>Database:</b>	Landmark	<b>Local Co-ordinate Reference:</b>	Well Hester Farms B-36HC
<b>Company:</b>	Bayswater Exploration & Production, LLC	<b>TVD Reference:</b>	WELL @ 4940.0ft (RKB - 25')
<b>Project:</b>	SEC.31-T7N-R66W	<b>MD Reference:</b>	WELL @ 4940.0ft (RKB - 25')
<b>Site:</b>	Hester Farms Pad Sec.31-7N-66W	<b>North Reference:</b>	True
<b>Well:</b>	Hester Farms B-36HC	<b>Survey Calculation Method:</b>	Minimum Curvature
<b>Wellbore:</b>	Wellbore #1		
<b>Design:</b>	Plan #1 (5-06-15)		

Planned Survey									
Measured Depth (ft)	Inclination (°)	Azimuth (°)	Vertical Depth (ft)	+N/-S (ft)	+E/-W (ft)	Vertical Section (ft)	Dogleg Rate (°/100ft)	Build Rate (°/100ft)	Turn Rate (°/100ft)
0.0	0.00	0.00	0.0	0.0	0.0	0.0	0.00	0.00	0.00
100.0	0.00	0.00	100.0	0.0	0.0	0.0	0.00	0.00	0.00
200.0	0.00	0.00	200.0	0.0	0.0	0.0	0.00	0.00	0.00
300.0	0.00	0.00	300.0	0.0	0.0	0.0	0.00	0.00	0.00
400.0	0.00	0.00	400.0	0.0	0.0	0.0	0.00	0.00	0.00
KOP - Start Build 1.00									
500.0	1.00	3.23	500.0	0.9	0.0	0.2	1.00	1.00	0.00
600.0	2.00	3.23	600.0	3.5	0.2	0.7	1.00	1.00	0.00
700.0	3.00	3.23	699.9	7.8	0.4	1.5	1.00	1.00	0.00
800.0	4.00	3.23	799.7	13.9	0.8	2.6	1.00	1.00	0.00
900.0	5.00	3.23	899.4	21.8	1.2	4.1	1.00	1.00	0.00
1,000.0	6.00	3.23	998.9	31.3	1.8	5.9	1.00	1.00	0.00
1,100.0	7.00	3.23	1,098.3	42.6	2.4	8.1	1.00	1.00	0.00
1,200.0	8.00	3.23	1,197.4	55.7	3.1	10.5	1.00	1.00	0.00
1,300.0	9.00	3.23	1,296.3	70.4	4.0	13.3	1.00	1.00	0.00
1,400.0	10.00	3.23	1,394.9	86.9	4.9	16.4	1.00	1.00	0.00
1,500.0	11.00	3.23	1,493.3	105.1	5.9	19.9	1.00	1.00	0.00
1,526.4	11.26	3.23	1,519.1	110.2	6.2	20.8	1.00	1.00	0.00
Start 5261.6 hold at 1526.4 MD									
1,600.0	11.26	3.23	1,591.3	124.5	7.0	23.6	0.00	0.00	0.00
1,700.0	11.26	3.23	1,689.4	144.0	8.1	27.2	0.00	0.00	0.00
1,800.0	11.26	3.23	1,787.5	163.5	9.2	30.9	0.00	0.00	0.00
1,900.0	11.26	3.23	1,885.6	183.0	10.3	34.6	0.00	0.00	0.00
2,000.0	11.26	3.23	1,983.6	202.5	11.4	38.3	0.00	0.00	0.00
2,100.0	11.26	3.23	2,081.7	222.1	12.5	42.0	0.00	0.00	0.00
2,200.0	11.26	3.23	2,179.8	241.6	13.6	45.7	0.00	0.00	0.00
2,300.0	11.26	3.23	2,277.9	261.1	14.7	49.4	0.00	0.00	0.00
2,400.0	11.26	3.23	2,375.9	280.6	15.8	53.1	0.00	0.00	0.00
2,500.0	11.26	3.23	2,474.0	300.1	16.9	56.7	0.00	0.00	0.00
2,600.0	11.26	3.23	2,572.1	319.6	18.0	60.4	0.00	0.00	0.00
2,700.0	11.26	3.23	2,670.2	339.1	19.1	64.1	0.00	0.00	0.00
2,800.0	11.26	3.23	2,768.2	358.6	20.2	67.8	0.00	0.00	0.00
2,900.0	11.26	3.23	2,866.3	378.1	21.3	71.5	0.00	0.00	0.00
3,000.0	11.26	3.23	2,964.4	397.6	22.4	75.2	0.00	0.00	0.00
3,100.0	11.26	3.23	3,062.4	417.1	23.5	78.9	0.00	0.00	0.00
3,200.0	11.26	3.23	3,160.5	436.6	24.6	82.6	0.00	0.00	0.00
3,300.0	11.26	3.23	3,258.6	456.1	25.7	86.3	0.00	0.00	0.00
3,400.0	11.26	3.23	3,356.7	475.6	26.8	89.9	0.00	0.00	0.00
3,500.0	11.26	3.23	3,454.7	495.1	27.9	93.6	0.00	0.00	0.00
3,600.0	11.26	3.23	3,552.8	514.6	29.0	97.3	0.00	0.00	0.00
3,700.0	11.26	3.23	3,650.9	534.1	30.1	101.0	0.00	0.00	0.00
3,800.0	11.26	3.23	3,749.0	553.6	31.2	104.7	0.00	0.00	0.00
3,900.0	11.26	3.23	3,847.0	573.1	32.3	108.4	0.00	0.00	0.00
4,000.0	11.26	3.23	3,945.1	592.6	33.4	112.1	0.00	0.00	0.00
4,100.0	11.26	3.23	4,043.2	612.1	34.5	115.8	0.00	0.00	0.00
4,200.0	11.26	3.23	4,141.3	631.6	35.6	119.4	0.00	0.00	0.00
4,300.0	11.26	3.23	4,239.3	651.1	36.7	123.1	0.00	0.00	0.00
4,400.0	11.26	3.23	4,337.4	670.6	37.8	126.8	0.00	0.00	0.00
4,500.0	11.26	3.23	4,435.5	690.1	38.9	130.5	0.00	0.00	0.00
4,600.0	11.26	3.23	4,533.6	709.6	40.0	134.2	0.00	0.00	0.00
4,700.0	11.26	3.23	4,631.6	729.1	41.1	137.9	0.00	0.00	0.00
4,800.0	11.26	3.23	4,729.7	748.6	42.2	141.6	0.00	0.00	0.00
4,900.0	11.26	3.23	4,827.8	768.1	43.3	145.3	0.00	0.00	0.00
5,000.0	11.26	3.23	4,925.9	787.6	44.4	149.0	0.00	0.00	0.00

<b>Database:</b>	Landmark	<b>Local Co-ordinate Reference:</b>	Well Hester Farms B-36HC
<b>Company:</b>	Bayswater Exploration & Production, LLC	<b>TVD Reference:</b>	WELL @ 4940.0ft (RKB - 25')
<b>Project:</b>	SEC.31-T7N-R66W	<b>MD Reference:</b>	WELL @ 4940.0ft (RKB - 25')
<b>Site:</b>	Hester Farms Pad Sec.31-7N-66W	<b>North Reference:</b>	True
<b>Well:</b>	Hester Farms B-36HC	<b>Survey Calculation Method:</b>	Minimum Curvature
<b>Wellbore:</b>	Wellbore #1		
<b>Design:</b>	Plan #1 (5-06-15)		

Planned Survey									
Measured Depth (ft)	Inclination (°)	Azimuth (°)	Vertical Depth (ft)	+N/-S (ft)	+E/-W (ft)	Vertical Section (ft)	Dogleg Rate (°/100ft)	Build Rate (°/100ft)	Turn Rate (°/100ft)
5,100.0	11.26	3.23	5,023.9	807.1	45.5	152.6	0.00	0.00	0.00
5,200.0	11.26	3.23	5,122.0	826.6	46.6	156.3	0.00	0.00	0.00
5,300.0	11.26	3.23	5,220.1	846.1	47.7	160.0	0.00	0.00	0.00
5,400.0	11.26	3.23	5,318.1	865.6	48.8	163.7	0.00	0.00	0.00
5,500.0	11.26	3.23	5,416.2	885.1	49.9	167.4	0.00	0.00	0.00
5,600.0	11.26	3.23	5,514.3	904.6	51.0	171.1	0.00	0.00	0.00
5,700.0	11.26	3.23	5,612.4	924.1	52.1	174.8	0.00	0.00	0.00
5,800.0	11.26	3.23	5,710.4	943.6	53.2	178.5	0.00	0.00	0.00
5,900.0	11.26	3.23	5,808.5	963.1	54.3	182.1	0.00	0.00	0.00
6,000.0	11.26	3.23	5,906.6	982.6	55.4	185.8	0.00	0.00	0.00
6,100.0	11.26	3.23	6,004.7	1,002.1	56.5	189.5	0.00	0.00	0.00
6,200.0	11.26	3.23	6,102.7	1,021.6	57.6	193.2	0.00	0.00	0.00
6,300.0	11.26	3.23	6,200.8	1,041.1	58.7	196.9	0.00	0.00	0.00
6,400.0	11.26	3.23	6,298.9	1,060.6	59.8	200.6	0.00	0.00	0.00
6,500.0	11.26	3.23	6,397.0	1,080.1	60.9	204.3	0.00	0.00	0.00
6,600.0	11.26	3.23	6,495.0	1,099.6	62.0	208.0	0.00	0.00	0.00
6,700.0	11.26	3.23	6,593.1	1,119.1	63.1	211.7	0.00	0.00	0.00
6,788.0	11.26	3.23	6,679.4	1,136.3	64.1	214.9	0.00	0.00	0.00
Start DLS 8.00 TFO -93.35									
6,800.0	11.25	358.31	6,691.2	1,138.6	64.1	215.4	8.00	-0.13	-40.99
6,900.0	13.94	323.03	6,788.9	1,158.0	56.6	227.5	8.00	2.69	-35.28
7,000.0	19.71	303.52	6,884.7	1,177.0	35.3	252.8	8.00	5.77	-19.51
7,100.0	26.62	293.17	6,976.6	1,195.1	0.5	290.9	8.00	6.92	-10.34
7,200.0	33.99	286.96	7,062.9	1,212.1	-46.9	341.0	8.00	7.37	-6.22
7,300.0	41.57	282.76	7,141.9	1,227.7	-106.1	402.2	8.00	7.58	-4.19
7,400.0	49.27	279.67	7,212.0	1,241.4	-175.9	473.3	8.00	7.69	-3.09
7,500.0	57.02	277.22	7,272.0	1,253.0	-255.0	552.8	8.00	7.76	-2.45
7,600.0	64.82	275.17	7,320.5	1,262.4	-341.8	639.3	8.00	7.80	-2.05
7,700.0	72.64	273.37	7,356.8	1,269.3	-434.7	731.0	8.00	7.82	-1.80
7,800.0	80.48	271.72	7,380.0	1,273.6	-531.7	826.2	8.00	7.84	-1.65
7,900.0	88.32	270.14	7,389.7	1,275.2	-631.2	923.1	8.00	7.84	-1.58
7,929.8	90.66	269.68	7,390.0	1,275.1	-661.0	951.9	8.00	7.85	-1.56
Start 4314.5 hold at 7929.8 MD - 7"									
8,000.0	90.66	269.68	7,389.2	1,274.7	-731.2	1,019.9	0.00	0.00	0.00
8,100.0	90.66	269.68	7,388.0	1,274.2	-831.2	1,116.8	0.00	0.00	0.00
8,200.0	90.66	269.68	7,386.9	1,273.6	-931.1	1,213.6	0.00	0.00	0.00
8,300.0	90.66	269.68	7,385.7	1,273.1	-1,031.1	1,310.4	0.00	0.00	0.00
8,400.0	90.66	269.68	7,384.6	1,272.5	-1,131.1	1,407.3	0.00	0.00	0.00
8,500.0	90.66	269.68	7,383.4	1,271.9	-1,231.1	1,504.1	0.00	0.00	0.00
8,600.0	90.66	269.68	7,382.2	1,271.4	-1,331.1	1,600.9	0.00	0.00	0.00
8,700.0	90.66	269.68	7,381.1	1,270.8	-1,431.1	1,697.8	0.00	0.00	0.00
8,800.0	90.66	269.68	7,379.9	1,270.2	-1,531.1	1,794.6	0.00	0.00	0.00
8,900.0	90.66	269.68	7,378.8	1,269.7	-1,631.1	1,891.4	0.00	0.00	0.00
9,000.0	90.66	269.68	7,377.6	1,269.1	-1,731.1	1,988.3	0.00	0.00	0.00
9,100.0	90.66	269.68	7,376.4	1,268.6	-1,831.1	2,085.1	0.00	0.00	0.00
9,200.0	90.66	269.68	7,375.3	1,268.0	-1,931.1	2,182.0	0.00	0.00	0.00
9,300.0	90.66	269.68	7,374.1	1,267.4	-2,031.1	2,278.8	0.00	0.00	0.00
9,400.0	90.66	269.68	7,373.0	1,266.9	-2,131.0	2,375.6	0.00	0.00	0.00
9,500.0	90.66	269.68	7,371.8	1,266.3	-2,231.0	2,472.5	0.00	0.00	0.00
9,600.0	90.66	269.68	7,370.6	1,265.7	-2,331.0	2,569.3	0.00	0.00	0.00
9,700.0	90.66	269.68	7,369.5	1,265.2	-2,431.0	2,666.1	0.00	0.00	0.00
9,800.0	90.66	269.68	7,368.3	1,264.6	-2,531.0	2,763.0	0.00	0.00	0.00
9,900.0	90.66	269.68	7,367.2	1,264.1	-2,631.0	2,859.8	0.00	0.00	0.00
10,000.0	90.66	269.68	7,366.0	1,263.5	-2,731.0	2,956.6	0.00	0.00	0.00

<b>Database:</b>	Landmark	<b>Local Co-ordinate Reference:</b>	Well Hester Farms B-36HC
<b>Company:</b>	Bayswater Exploration & Production, LLC	<b>TVD Reference:</b>	WELL @ 4940.0ft (RKB - 25')
<b>Project:</b>	SEC.31-T7N-R66W	<b>MD Reference:</b>	WELL @ 4940.0ft (RKB - 25')
<b>Site:</b>	Hester Farms Pad Sec.31-7N-66W	<b>North Reference:</b>	True
<b>Well:</b>	Hester Farms B-36HC	<b>Survey Calculation Method:</b>	Minimum Curvature
<b>Wellbore:</b>	Wellbore #1		
<b>Design:</b>	Plan #1 (5-06-15)		

Planned Survey										
Measured Depth (ft)	Inclination (°)	Azimuth (°)	Vertical Depth (ft)	+N/-S (ft)	+E/-W (ft)	Vertical Section (ft)	Dogleg Rate (°/100ft)	Build Rate (°/100ft)	Turn Rate (°/100ft)	
10,100.0	90.66	269.68	7,364.9	1,262.9	-2,831.0	3,053.5	0.00	0.00	0.00	
10,200.0	90.66	269.68	7,363.7	1,262.4	-2,931.0	3,150.3	0.00	0.00	0.00	
10,300.0	90.66	269.68	7,362.5	1,261.8	-3,031.0	3,247.2	0.00	0.00	0.00	
10,400.0	90.66	269.68	7,361.4	1,261.2	-3,131.0	3,344.0	0.00	0.00	0.00	
10,500.0	90.66	269.68	7,360.2	1,260.7	-3,231.0	3,440.8	0.00	0.00	0.00	
10,600.0	90.66	269.68	7,359.1	1,260.1	-3,330.9	3,537.7	0.00	0.00	0.00	
10,700.0	90.66	269.68	7,357.9	1,259.5	-3,430.9	3,634.5	0.00	0.00	0.00	
10,800.0	90.66	269.68	7,356.7	1,259.0	-3,530.9	3,731.3	0.00	0.00	0.00	
10,900.0	90.66	269.68	7,355.6	1,258.4	-3,630.9	3,828.2	0.00	0.00	0.00	
11,000.0	90.66	269.68	7,354.4	1,257.9	-3,730.9	3,925.0	0.00	0.00	0.00	
11,100.0	90.66	269.68	7,353.3	1,257.3	-3,830.9	4,021.9	0.00	0.00	0.00	
11,200.0	90.66	269.68	7,352.1	1,256.7	-3,930.9	4,118.7	0.00	0.00	0.00	
11,300.0	90.66	269.68	7,350.9	1,256.2	-4,030.9	4,215.5	0.00	0.00	0.00	
11,400.0	90.66	269.68	7,349.8	1,255.6	-4,130.9	4,312.4	0.00	0.00	0.00	
11,500.0	90.66	269.68	7,348.6	1,255.0	-4,230.9	4,409.2	0.00	0.00	0.00	
11,600.0	90.66	269.68	7,347.5	1,254.5	-4,330.9	4,506.0	0.00	0.00	0.00	
11,700.0	90.66	269.68	7,346.3	1,253.9	-4,430.9	4,602.9	0.00	0.00	0.00	
11,800.0	90.66	269.68	7,345.1	1,253.4	-4,530.8	4,699.7	0.00	0.00	0.00	
11,900.0	90.66	269.68	7,344.0	1,252.8	-4,630.8	4,796.5	0.00	0.00	0.00	
12,000.0	90.66	269.68	7,342.8	1,252.2	-4,730.8	4,893.4	0.00	0.00	0.00	
12,100.0	90.66	269.68	7,341.7	1,251.7	-4,830.8	4,990.2	0.00	0.00	0.00	
12,200.0	90.66	269.68	7,340.5	1,251.1	-4,930.8	5,087.1	0.00	0.00	0.00	
12,244.3	90.66	269.68	7,340.0	1,250.9	-4,975.1	5,130.0	0.00	0.00	0.00	
TD at 12244.3										

Targets									
Target Name	Dip Angle (°)	Dip Dir. (°)	TVD (ft)	+N/-S (ft)	+E/-W (ft)	Northing (ft)	Easting (ft)	Latitude	Longitude
LPL 325'FNL, 470'FEI - plan hits target center - Point	0.00	0.00	7,390.0	1,275.1	-661.0	1,439,194.30	3,185,178.63	40.537079	-104.833757
BHL 325'FNL, 470'FW - plan hits target center - Point	0.00	0.00	7,340.0	1,250.9	-4,975.1	1,439,137.49	3,180,864.91	40.537011	-104.849278
SHL 1604'FNL, 202'F - plan hits target center - Point	0.00	0.00	1.0	0.0	0.0	1,437,924.23	3,185,849.18	40.533579	-104.831379

Casing Points					
Measured Depth (ft)	Vertical Depth (ft)	Name	Casing Diameter (")	Hole Diameter (")	
7,929.8	7,390.0	7"	7	7-1/2	

<b>Database:</b>	Landmark	<b>Local Co-ordinate Reference:</b>	Well Hester Farms B-36HC
<b>Company:</b>	Bayswater Exploration & Production, LLC	<b>TVD Reference:</b>	WELL @ 4940.0ft (RKB - 25')
<b>Project:</b>	SEC.31-T7N-R66W	<b>MD Reference:</b>	WELL @ 4940.0ft (RKB - 25')
<b>Site:</b>	Hester Farms Pad Sec.31-7N-66W	<b>North Reference:</b>	True
<b>Well:</b>	Hester Farms B-36HC	<b>Survey Calculation Method:</b>	Minimum Curvature
<b>Wellbore:</b>	Wellbore #1		
<b>Design:</b>	Plan #1 (5-06-15)		

Plan Annotations

Measured Depth (ft)	Vertical Depth (ft)	Local Coordinates		Comment
		+N/-S (ft)	+E/-W (ft)	
400.0	400.0	0.0	0.0	KOP - Start Build 1.00
1,526.4	1,519.1	110.2	6.2	Start 5261.6 hold at 1526.4 MD
6,788.0	6,679.4	1,136.3	64.1	Start DLS 8.00 TFO -93.35
7,929.8	7,390.0	1,275.1	-661.0	Start 4314.5 hold at 7929.8 MD
12,244.3	7,340.0	1,250.9	-4,975.1	TD at 12244.3