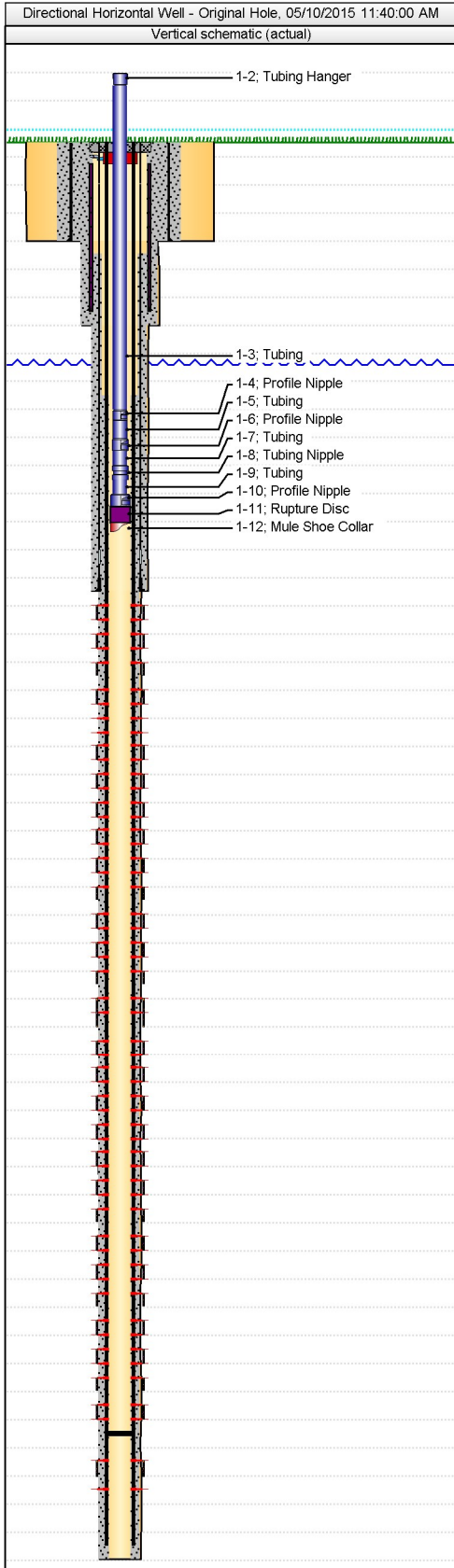


Tubing (graphic)

Well Name: RUHL 1C-32H-B264

API # 05123402790000	Well Type Gas	Operating Region Western Ops	Division DJ Basin	Area Wattenberg	Pad Ruhl 32H-B264 (West)	County/Parish Weld	State CO	Field Name Wattenberg	
Operator		Well Status		Orig KB El...	Gr Elev (ft)	KB-Grd (ft)	Total Depth (All) (ftKB)	Total Depth (TVD) (ftKB)	PBTD (All) (ftKB)



Tubing - Production set at 7,206.6ftKB on 05/10/2015 11:40 Proposed?<proposedrun>					
Tubing Description Tubing - Production	Wellbore Original Hole	Run Job Original Completion / D&C 04/03/2015 05:30, 13179004	Set Depth (ftKB) 7,206.6	Tubing Set Date 05/10/2015	Pull Date

Comment

Tubing Components

Item Des	Icon	OD (in)	ID (in)	Wt (lb/ft)	Grade	Len (ft)	Jts	Top Thread	Top (ftKB)	Btm (ftKB)
Depth Correction	Wellhead 01	0.0	0.00	0		25.00	1		-319.8	-294.8
Tubing Hanger	Tubing Hanger 2	2 3/8	1.94	0		0.85	1		-294.8	-293.9
Tubing	Tubing (blue) continuous	2 3/8	1.99	4.70	L-80	7,175.41	21	3	-293.9	6,881.5
Profile Nipple	Profile nipple	2 3/8	1.79	0		0.93	1		6,881.5	6,882.4
Tubing	Tubing (blue)	2 3/8	1.86	4.70	L-80	31.74	1		6,882.4	6,914.2
Profile Nipple	Profile nipple	2.59	1.87	4		0.93	1		6,914.2	6,915.1
Tubing	Tubing (blue) continuous	2 3/8	1.99	4.70	L-80	255.79	8		6,915.1	7,170.9
Tubing Nipple	Nipple	2.59	1.99	4	N-80	1.10	1		7,170.9	7,172.0
Tubing	Tubing (blue) continuous	2 3/8	1.99	4.70	L-80	32.31	1		7,172.0	7,204.3
Profile Nipple	Profile nipple	3	1.79	1/16		1.05	1		7,204.3	7,205.4
Rupture Disc	Tubing	3	1.99	1/16		0.80	1		7,205.4	7,206.2
Mule Shoe Collar	Mule shoe	3	2.59	1/16	J-55	0.41	1		7,206.2	7,206.6

Tub Comp Status History

Item Description	Btm (ftKB)	Status Date	Status	Note