



Bill Barrett Corporation

Bill Barrett Corp.

Weld Co., CO

Sec.35-T5N-R62W

Anschutz State 5-62-35-6457C2B

Wellbore #1

Plan: Design #1

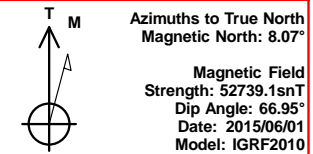
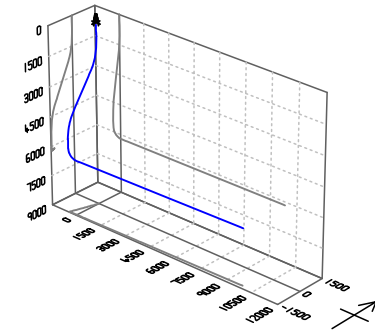
Standard Planning Report

01 June, 2015



Bill Barrett Corp.
Project: Weld Co., CO
Site: Sec.35-T5N-R62W
Well: Anschutz State 5-62-35-6457C2B
Wellbore: Wellbore #1
Design: Design #1
Lat: 40° 21' 11.671 N
Long: 104° 17' 54.532 W
Pad GL: 4580.00
KB: Well @ 4596.00usft

Archer



SECTION DETAILS

MD	Inc	Azi	TVD	+N/-S	+E/-W	Dleg	TFace	V Sect	Annotation
0.00	0.00	0.00	0.00	0.00	0.00	0.00	0.00	0.00	
900.00	0.00	0.00	900.00	0.00	0.00	0.00	0.00	0.00	Start Build 2.00
2268.74	27.37	197.15	2217.26	-306.54	-94.62	2.00	197.15	-99.79	Start 1933.54 hold at 2268.74 MD
4202.29	27.37	197.15	3934.28	-1156.05	-356.83	0.00	0.00	-376.35	Start Drop -2.00
5571.03	0.00	0.00	5251.54	-1462.59	-451.45	2.00	180.00	-476.15	Start 500.01 hold at 5571.03 MD
6071.04	0.00	0.00	5751.55	-1462.59	-451.45	0.00	0.00	-476.15	Start Build 12.00
6824.11	90.37	89.03	6229.00	-1454.45	29.01	12.00	89.03	4.39	Start 9809.91 hold at 6824.11 MD
16634.02	90.37	89.03	6166.00	-1288.36	9837.32	0.00	0.00	9814.10	TD at 16634.02

WELL DETAILS: Anschutz State 5-62-35-6457C2B

+N/-S	+E/-W	Northing	Ground Level:	4580.00	Latitude	Longitude	Slot
0.00	0.00	1373795.308	Easting	3334856.041	40° 21' 11.671 N	104° 17' 54.532 W	

PROJECT DETAILS: Weld Co., CO

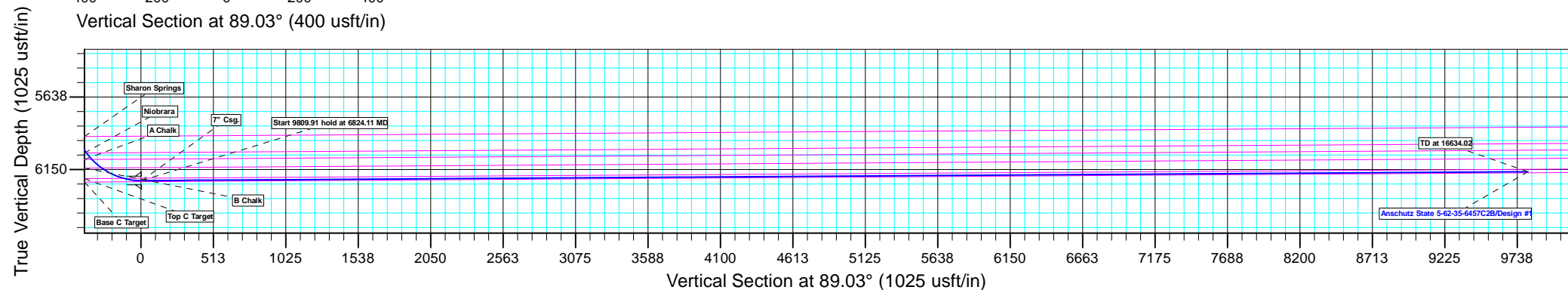
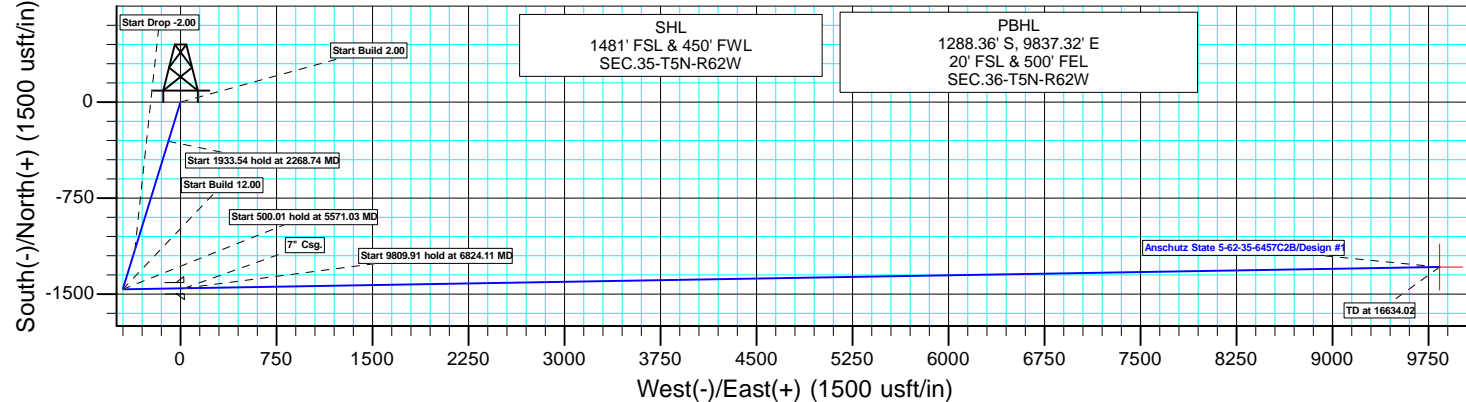
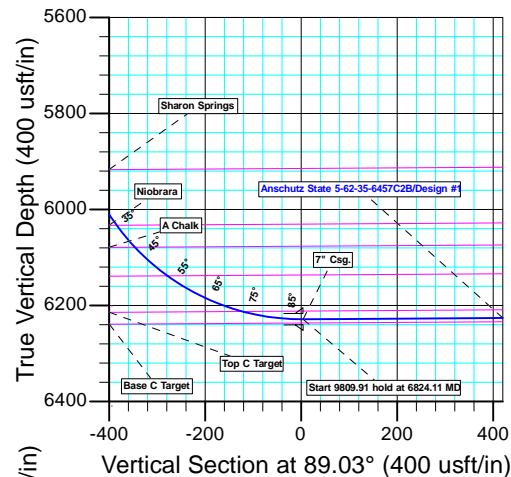
Geodetic System: US State Plane 1983
Datum: North American Datum 1983
Ellipsoid: GRS 1980
Zone: Colorado Northern Zone
System Datum: Mean Sea Level

CASING DETAILS

TVD	MD	Name
6229.00	6824.11	7" Csg.

WELLBORE TARGET DETAILS (LAT/LONG)

Name	TVD	+N/-S	+E/-W	Latitude	Longitude	Shape
Anschutz State 5-62-35-6457C2B tgt	6166.00	-1288.36	9837.32	40° 20' 58.920 N	104° 15' 47.470 W	Point



Plan: Design #1 (Anschutz State 5-62-35-6457C2B/Wellbore #1)

Created By: Ricky Osburn Date: 14:35, June 01 2015

Database:	EDMDBBW	Local Co-ordinate Reference:	Well Anschutz State 5-62-35-6457C2B
Company:	Bill Barrett Corp.	TVD Reference:	Well @ 4596.00usft
Project:	Weld Co., CO	MD Reference:	Well @ 4596.00usft
Site:	Sec.35-T5N-R62W	North Reference:	True
Well:	Anschutz State 5-62-35-6457C2B	Survey Calculation Method:	Minimum Curvature
Wellbore:	Wellbore #1		
Design:	Design #1		

Project	Weld Co., CO		
Map System:	US State Plane 1983	System Datum:	Mean Sea Level
Geo Datum:	North American Datum 1983		
Map Zone:	Colorado Northern Zone		

Site		Sec.35-T5N-R62W			
Site Position:		Northing:	1,375,286.395 usft	Latitude:	40° 21' 26.420 N
From:	Lat/Long	Easting:	3,334,739.959 usft	Longitude:	104° 17' 55.770 W
Position Uncertainty:	0.00 usft	Slot Radius:	13-3/16 "	Grid Convergence:	0.78 °

Well	Anschutz State 5-62-35-6457C2B					
Well Position	+N/-S	-1,492.52 usft	Northing:	1,373,795.308 usft	Latitude:	40° 21' 11.671 N
	+E/-W	95.87 usft	Easting:	3,334,856.041 usft	Longitude:	104° 17' 54.532 W
Position Uncertainty		0.00 usft	Wellhead Elevation:	0.00 usft	Ground Level:	4,580.00 usft

Wellbore	Wellbore #1				
Magnetics	Model Name	Sample Date	Declination (°)	Dip Angle (°)	Field Strength (nT)
	IGRF2010	2015/06/01	8.07	66.95	52,739

Design	Design #1			
Audit Notes:				
Version:	Phase:	PLAN	Tie On Depth:	0.00
Vertical Section:	Depth From (TVD) (usft)	+N/-S (usft)	+E/-W (usft)	Direction (°)
	0.00	0.00	0.00	89.03

Plan Sections										
Measured Depth (usft)	Inclination (°)	Azimuth (°)	Vertical Depth (usft)	+N/-S (usft)	+E/-W (usft)	Dogleg Rate (°/100usft)	Build Rate (°/100usft)	Turn Rate (°/100usft)	TFO (°)	Target
0.00	0.00	0.00	0.00	0.00	0.00	0.00	0.00	0.00	0.00	
900.00	0.00	0.00	900.00	0.00	0.00	0.00	0.00	0.00	0.00	
2,268.74	27.37	197.15	2,217.26	-306.54	-94.62	2.00	2.00	0.00	197.15	
4,202.29	27.37	197.15	3,934.28	-1,156.05	-356.83	0.00	0.00	0.00	0.00	
5,571.03	0.00	0.00	5,251.54	-1,462.59	-451.45	2.00	-2.00	0.00	180.00	
6,071.04	0.00	0.00	5,751.55	-1,462.59	-451.45	0.00	0.00	0.00	0.00	
6,824.11	90.37	89.03	6,229.00	-1,454.45	29.01	12.00	12.00	0.00	89.03	Anschutz State 5-62-35-6457C2B
16,634.02	90.37	89.03	6,166.00	-1,288.36	9,837.32	0.00	0.00	0.00	0.00	Anschutz State 5-62-35-6457C2B

Database:	EDMDBBW	Local Co-ordinate Reference:	Well Anschutz State 5-62-35-6457C2B
Company:	Bill Barrett Corp.	TVD Reference:	Well @ 4596.00usft
Project:	Weld Co., CO	MD Reference:	Well @ 4596.00usft
Site:	Sec.35-T5N-R62W	North Reference:	True
Well:	Anschutz State 5-62-35-6457C2B	Survey Calculation Method:	Minimum Curvature
Wellbore:	Wellbore #1		
Design:	Design #1		

Planned Survey									
Measured Depth (usft)	Inclination (°)	Azimuth (°)	Vertical Depth (usft)	+N/-S (usft)	+E/-W (usft)	Vertical Section (usft)	Dogleg Rate (°/100usft)	Build Rate (°/100usft)	Turn Rate (°/100usft)
0.00	0.00	0.00	0.00	0.00	0.00	0.00	0.00	0.00	0.00
100.00	0.00	0.00	100.00	0.00	0.00	0.00	0.00	0.00	0.00
200.00	0.00	0.00	200.00	0.00	0.00	0.00	0.00	0.00	0.00
300.00	0.00	0.00	300.00	0.00	0.00	0.00	0.00	0.00	0.00
400.00	0.00	0.00	400.00	0.00	0.00	0.00	0.00	0.00	0.00
500.00	0.00	0.00	500.00	0.00	0.00	0.00	0.00	0.00	0.00
600.00	0.00	0.00	600.00	0.00	0.00	0.00	0.00	0.00	0.00
700.00	0.00	0.00	700.00	0.00	0.00	0.00	0.00	0.00	0.00
800.00	0.00	0.00	800.00	0.00	0.00	0.00	0.00	0.00	0.00
Start Build 2.00									
900.00	0.00	0.00	900.00	0.00	0.00	0.00	0.00	0.00	0.00
1,000.00	2.00	197.15	999.98	-1.67	-0.51	-0.54	2.00	2.00	0.00
1,100.00	4.00	197.15	1,099.84	-6.67	-2.06	-2.17	2.00	2.00	0.00
1,200.00	6.00	197.15	1,199.45	-15.00	-4.63	-4.88	2.00	2.00	0.00
1,300.00	8.00	197.15	1,298.70	-26.64	-8.22	-8.67	2.00	2.00	0.00
1,400.00	10.00	197.15	1,397.47	-41.59	-12.84	-13.54	2.00	2.00	0.00
1,500.00	12.00	197.15	1,495.62	-59.82	-18.46	-19.47	2.00	2.00	0.00
1,600.00	14.00	197.15	1,593.06	-81.31	-25.10	-26.47	2.00	2.00	0.00
1,700.00	16.00	197.15	1,689.64	-106.04	-32.73	-34.52	2.00	2.00	0.00
1,800.00	18.00	197.15	1,785.27	-133.98	-41.35	-43.62	2.00	2.00	0.00
1,900.00	20.00	197.15	1,879.82	-165.08	-50.96	-53.74	2.00	2.00	0.00
2,000.00	22.00	197.15	1,973.17	-199.32	-61.52	-64.89	2.00	2.00	0.00
2,100.00	24.00	197.15	2,065.21	-236.66	-73.05	-77.04	2.00	2.00	0.00
2,200.00	26.00	197.15	2,155.84	-277.04	-85.51	-90.19	2.00	2.00	0.00
Start 1933.54 hold at 2268.74 MD									
2,268.74	27.37	197.15	2,217.26	-306.54	-94.62	-99.79	2.00	2.00	0.00
2,300.00	27.37	197.15	2,245.02	-320.27	-98.86	-104.26	0.00	0.00	0.00
2,400.00	27.37	197.15	2,333.82	-364.21	-112.42	-118.57	0.00	0.00	0.00
2,500.00	27.37	197.15	2,422.62	-408.14	-125.98	-132.87	0.00	0.00	0.00
2,600.00	27.37	197.15	2,511.42	-452.08	-139.54	-147.17	0.00	0.00	0.00
2,700.00	27.37	197.15	2,600.22	-496.01	-153.10	-161.48	0.00	0.00	0.00
2,800.00	27.37	197.15	2,689.02	-539.95	-166.66	-175.78	0.00	0.00	0.00
2,900.00	27.37	197.15	2,777.83	-583.88	-180.22	-190.08	0.00	0.00	0.00
3,000.00	27.37	197.15	2,866.63	-627.82	-193.79	-204.39	0.00	0.00	0.00
3,100.00	27.37	197.15	2,955.43	-671.76	-207.35	-218.69	0.00	0.00	0.00
3,200.00	27.37	197.15	3,044.23	-715.69	-220.91	-232.99	0.00	0.00	0.00
3,300.00	27.37	197.15	3,133.03	-759.63	-234.47	-247.30	0.00	0.00	0.00
3,400.00	27.37	197.15	3,221.83	-803.56	-248.03	-261.60	0.00	0.00	0.00
3,500.00	27.37	197.15	3,310.64	-847.50	-261.59	-275.90	0.00	0.00	0.00
3,600.00	27.37	197.15	3,399.44	-891.43	-275.15	-290.21	0.00	0.00	0.00
3,700.00	27.37	197.15	3,488.24	-935.37	-288.72	-304.51	0.00	0.00	0.00
3,800.00	27.37	197.15	3,577.04	-979.30	-302.28	-318.81	0.00	0.00	0.00
3,900.00	27.37	197.15	3,665.84	-1,023.24	-315.84	-333.12	0.00	0.00	0.00
4,000.00	27.37	197.15	3,754.65	-1,067.18	-329.40	-347.42	0.00	0.00	0.00
4,100.00	27.37	197.15	3,843.45	-1,111.11	-342.96	-361.72	0.00	0.00	0.00
Start Drop -2.00									
4,202.29	27.37	197.15	3,934.28	-1,156.05	-356.83	-376.35	0.00	0.00	0.00
4,300.00	25.42	197.15	4,021.80	-1,197.56	-369.64	-389.87	2.00	-2.00	0.00
4,400.00	23.42	197.15	4,112.85	-1,237.06	-381.84	-402.73	2.00	-2.00	0.00
4,500.00	21.42	197.15	4,205.28	-1,273.51	-393.09	-414.59	2.00	-2.00	0.00
Sussex									
4,546.50	20.49	197.15	4,248.71	-1,289.40	-397.99	-419.76	2.00	-2.00	0.00
4,600.00	19.42	197.15	4,299.00	-1,306.84	-403.38	-425.44	2.00	-2.00	0.00
4,700.00	17.42	197.15	4,393.87	-1,337.03	-412.70	-435.27	2.00	-2.00	0.00

Database:	EDMDBBW	Local Co-ordinate Reference:	Well Anschutz State 5-62-35-6457C2B
Company:	Bill Barrett Corp.	TVD Reference:	Well @ 4596.00usft
Project:	Weld Co., CO	MD Reference:	Well @ 4596.00usft
Site:	Sec.35-T5N-R62W	North Reference:	True
Well:	Anschutz State 5-62-35-6457C2B	Survey Calculation Method:	Minimum Curvature
Wellbore:	Wellbore #1		
Design:	Design #1		

Planned Survey									
Measured Depth (usft)	Inclination (°)	Azimuth (°)	Vertical Depth (usft)	+N/-S (usft)	+E/-W (usft)	Vertical Section (usft)	Dogleg Rate (°/100usft)	Build Rate (°/100usft)	Turn Rate (°/100usft)
4,800.00	15.42	197.15	4,489.78	-1,364.04	-421.03	-444.06	2.00	-2.00	0.00
4,900.00	13.42	197.15	4,586.63	-1,387.84	-428.38	-451.81	2.00	-2.00	0.00
5,000.00	11.42	197.15	4,684.28	-1,408.39	-434.72	-458.50	2.00	-2.00	0.00
5,100.00	9.42	197.15	4,782.63	-1,425.67	-440.05	-464.13	2.00	-2.00	0.00
Shannon									
5,100.37	9.41	197.15	4,783.00	-1,425.73	-440.07	-464.15	2.00	-2.00	0.00
5,200.00	7.42	197.15	4,881.54	-1,439.66	-444.37	-468.68	2.00	-2.00	0.00
5,300.00	5.42	197.15	4,980.91	-1,450.35	-447.67	-472.16	2.00	-2.00	0.00
5,400.00	3.42	197.15	5,080.61	-1,457.71	-449.94	-474.56	2.00	-2.00	0.00
5,500.00	1.42	197.15	5,180.52	-1,461.75	-451.19	-475.87	2.00	-2.00	0.00
Start 500.01 hold at 5571.03 MD									
5,571.03	0.00	0.00	5,251.54	-1,462.59	-451.45	-476.15	2.00	-2.00	0.00
5,600.00	0.00	0.00	5,280.51	-1,462.59	-451.45	-476.15	0.00	0.00	0.00
5,700.00	0.00	0.00	5,380.51	-1,462.59	-451.45	-476.15	0.00	0.00	0.00
5,800.00	0.00	0.00	5,480.51	-1,462.59	-451.45	-476.15	0.00	0.00	0.00
5,900.00	0.00	0.00	5,580.51	-1,462.59	-451.45	-476.15	0.00	0.00	0.00
6,000.00	0.00	0.00	5,680.51	-1,462.59	-451.45	-476.15	0.00	0.00	0.00
Start Build 12.00									
6,071.04	0.00	0.00	5,751.55	-1,462.59	-451.45	-476.15	0.00	0.00	0.00
6,075.00	0.47	89.03	5,755.51	-1,462.59	-451.43	-476.13	12.00	12.00	0.00
6,100.00	3.47	89.03	5,780.49	-1,462.58	-450.57	-475.27	12.00	12.00	0.00
6,125.00	6.47	89.03	5,805.39	-1,462.54	-448.40	-473.10	12.00	12.00	0.00
6,150.00	9.47	89.03	5,830.15	-1,462.48	-444.94	-469.63	12.00	12.00	0.00
6,175.00	12.47	89.03	5,854.69	-1,462.40	-440.18	-464.87	12.00	12.00	0.00
6,200.00	15.47	89.03	5,878.95	-1,462.30	-434.14	-458.84	12.00	12.00	0.00
6,225.00	18.47	89.03	5,902.85	-1,462.17	-426.85	-451.54	12.00	12.00	0.00
Sharon Springs									
6,240.94	20.39	89.03	5,917.88	-1,462.08	-421.55	-446.24	12.00	12.00	0.00
6,250.00	21.47	89.03	5,926.35	-1,462.03	-418.31	-443.00	12.00	12.00	0.00
6,275.00	24.47	89.03	5,949.36	-1,461.86	-408.55	-433.24	12.00	12.00	0.00
6,300.00	27.47	89.03	5,971.83	-1,461.68	-397.61	-422.29	12.00	12.00	0.00
6,325.00	30.47	89.03	5,993.70	-1,461.47	-385.50	-410.18	12.00	12.00	0.00
6,350.00	33.47	89.03	6,014.91	-1,461.25	-372.26	-396.95	12.00	12.00	0.00
Niobrara									
6,372.63	36.19	89.03	6,033.48	-1,461.03	-359.34	-384.02	12.00	12.00	0.00
6,375.00	36.47	89.03	6,035.39	-1,461.01	-357.94	-382.62	12.00	12.00	0.00
6,400.00	39.47	89.03	6,055.09	-1,460.75	-342.56	-367.24	12.00	12.00	0.00
6,425.00	42.47	89.03	6,073.97	-1,460.47	-326.17	-350.85	12.00	12.00	0.00
A Chalk									
6,432.19	43.34	89.03	6,079.23	-1,460.39	-321.27	-345.95	12.00	12.00	0.00
6,450.00	45.47	89.03	6,091.96	-1,460.17	-308.81	-333.49	12.00	12.00	0.00
6,475.00	48.47	89.03	6,109.01	-1,459.87	-290.54	-315.21	12.00	12.00	0.00
6,500.00	51.47	89.03	6,125.09	-1,459.54	-271.40	-296.07	12.00	12.00	0.00
B Chalk									
6,522.69	54.20	89.03	6,138.80	-1,459.23	-253.32	-277.99	12.00	12.00	0.00
6,525.00	54.47	89.03	6,140.14	-1,459.20	-251.45	-276.12	12.00	12.00	0.00
6,550.00	57.47	89.03	6,154.13	-1,458.85	-230.73	-255.40	12.00	12.00	0.00
6,575.00	60.47	89.03	6,167.01	-1,458.49	-209.32	-233.98	12.00	12.00	0.00
6,600.00	63.47	89.03	6,178.76	-1,458.12	-187.25	-211.91	12.00	12.00	0.00
6,625.00	66.47	89.03	6,189.33	-1,457.73	-164.61	-189.26	12.00	12.00	0.00
6,650.00	69.47	89.03	6,198.70	-1,457.34	-141.44	-166.09	12.00	12.00	0.00
6,675.00	72.47	89.03	6,206.85	-1,456.94	-117.81	-142.46	12.00	12.00	0.00

Database:	EDMDBBW	Local Co-ordinate Reference:	Well Anschutz State 5-62-35-6457C2B
Company:	Bill Barrett Corp.	TVD Reference:	Well @ 4596.00usft
Project:	Weld Co., CO	MD Reference:	Well @ 4596.00usft
Site:	Sec.35-T5N-R62W	North Reference:	True
Well:	Anschutz State 5-62-35-6457C2B	Survey Calculation Method:	Minimum Curvature
Wellbore:	Wellbore #1		
Design:	Design #1		

Planned Survey									
Measured Depth (usft)	Inclination (°)	Azimuth (°)	Vertical Depth (usft)	+N/-S (usft)	+E/-W (usft)	Vertical Section (usft)	Dogleg Rate (°/100usft)	Build Rate (°/100usft)	Turn Rate (°/100usft)
Top C Target									
6,696.21	75.02	89.03	6,212.79	-1,456.60	-97.45	-122.10	12.00	12.00	0.00
6,700.00	75.47	89.03	6,213.75	-1,456.53	-93.79	-118.43	12.00	12.00	0.00
6,725.00	78.47	89.03	6,219.39	-1,456.12	-69.44	-94.08	12.00	12.00	0.00
6,750.00	81.47	89.03	6,223.74	-1,455.70	-44.82	-69.46	12.00	12.00	0.00
6,775.00	84.47	89.03	6,226.80	-1,455.28	-20.02	-44.65	12.00	12.00	0.00
6,800.00	87.47	89.03	6,228.55	-1,454.86	4.91	-19.72	12.00	12.00	0.00
Start 9809.91 hold at 6824.11 MD - 7" Csg.									
6,824.11	90.37	89.03	6,229.00	-1,454.45	29.01	4.39	12.00	12.00	0.00
6,900.00	90.37	89.03	6,228.52	-1,453.17	104.89	80.28	0.00	0.00	0.00
7,000.00	90.37	89.03	6,227.88	-1,451.48	204.88	180.27	0.00	0.00	0.00
7,100.00	90.37	89.03	6,227.23	-1,449.78	304.86	280.27	0.00	0.00	0.00
7,200.00	90.37	89.03	6,226.59	-1,448.09	404.84	380.27	0.00	0.00	0.00
7,300.00	90.37	89.03	6,225.95	-1,446.40	504.83	480.27	0.00	0.00	0.00
7,400.00	90.37	89.03	6,225.31	-1,444.70	604.81	580.27	0.00	0.00	0.00
7,500.00	90.37	89.03	6,224.66	-1,443.01	704.79	680.26	0.00	0.00	0.00
7,600.00	90.37	89.03	6,224.02	-1,441.32	804.78	780.26	0.00	0.00	0.00
7,700.00	90.37	89.03	6,223.38	-1,439.62	904.76	880.26	0.00	0.00	0.00
7,800.00	90.37	89.03	6,222.74	-1,437.93	1,004.74	980.26	0.00	0.00	0.00
7,900.00	90.37	89.03	6,222.09	-1,436.24	1,104.73	1,080.26	0.00	0.00	0.00
8,000.00	90.37	89.03	6,221.45	-1,434.54	1,204.71	1,180.25	0.00	0.00	0.00
8,100.00	90.37	89.03	6,220.81	-1,432.85	1,304.69	1,280.25	0.00	0.00	0.00
8,200.00	90.37	89.03	6,220.17	-1,431.16	1,404.68	1,380.25	0.00	0.00	0.00
8,300.00	90.37	89.03	6,219.53	-1,429.46	1,504.66	1,480.25	0.00	0.00	0.00
8,400.00	90.37	89.03	6,218.88	-1,427.77	1,604.65	1,580.25	0.00	0.00	0.00
8,500.00	90.37	89.03	6,218.24	-1,426.08	1,704.63	1,680.24	0.00	0.00	0.00
8,600.00	90.37	89.03	6,217.60	-1,424.39	1,804.61	1,780.24	0.00	0.00	0.00
8,700.00	90.37	89.03	6,216.96	-1,422.69	1,904.60	1,880.24	0.00	0.00	0.00
8,800.00	90.37	89.03	6,216.31	-1,421.00	2,004.58	1,980.24	0.00	0.00	0.00
8,900.00	90.37	89.03	6,215.67	-1,419.31	2,104.56	2,080.23	0.00	0.00	0.00
9,000.00	90.37	89.03	6,215.03	-1,417.61	2,204.55	2,180.23	0.00	0.00	0.00
9,100.00	90.37	89.03	6,214.39	-1,415.92	2,304.53	2,280.23	0.00	0.00	0.00
9,200.00	90.37	89.03	6,213.75	-1,414.23	2,404.51	2,380.23	0.00	0.00	0.00
9,300.00	90.37	89.03	6,213.10	-1,412.53	2,504.50	2,480.23	0.00	0.00	0.00
9,400.00	90.37	89.03	6,212.46	-1,410.84	2,604.48	2,580.22	0.00	0.00	0.00
9,500.00	90.37	89.03	6,211.82	-1,409.15	2,704.47	2,680.22	0.00	0.00	0.00
9,600.00	90.37	89.03	6,211.18	-1,407.45	2,804.45	2,780.22	0.00	0.00	0.00
9,700.00	90.37	89.03	6,210.53	-1,405.76	2,904.43	2,880.22	0.00	0.00	0.00
9,800.00	90.37	89.03	6,209.89	-1,404.07	3,004.42	2,980.22	0.00	0.00	0.00
9,900.00	90.37	89.03	6,209.25	-1,402.37	3,104.40	3,080.21	0.00	0.00	0.00
10,000.00	90.37	89.03	6,208.61	-1,400.68	3,204.38	3,180.21	0.00	0.00	0.00
10,100.00	90.37	89.03	6,207.96	-1,398.99	3,304.37	3,280.21	0.00	0.00	0.00
10,200.00	90.37	89.03	6,207.32	-1,397.29	3,404.35	3,380.21	0.00	0.00	0.00
10,300.00	90.37	89.03	6,206.68	-1,395.60	3,504.33	3,480.21	0.00	0.00	0.00
10,400.00	90.37	89.03	6,206.04	-1,393.91	3,604.32	3,580.20	0.00	0.00	0.00
10,500.00	90.37	89.03	6,205.40	-1,392.21	3,704.30	3,680.20	0.00	0.00	0.00
10,600.00	90.37	89.03	6,204.75	-1,390.52	3,804.28	3,780.20	0.00	0.00	0.00
10,700.00	90.37	89.03	6,204.11	-1,388.83	3,904.27	3,880.20	0.00	0.00	0.00
10,800.00	90.37	89.03	6,203.47	-1,387.14	4,004.25	3,980.20	0.00	0.00	0.00
10,900.00	90.37	89.03	6,202.83	-1,385.44	4,104.24	4,080.19	0.00	0.00	0.00
11,000.00	90.37	89.03	6,202.18	-1,383.75	4,204.22	4,180.19	0.00	0.00	0.00
11,100.00	90.37	89.03	6,201.54	-1,382.06	4,304.20	4,280.19	0.00	0.00	0.00
11,200.00	90.37	89.03	6,200.90	-1,380.36	4,404.19	4,380.19	0.00	0.00	0.00
11,300.00	90.37	89.03	6,200.26	-1,378.67	4,504.17	4,480.19	0.00	0.00	0.00

Database:	EDMDBBW	Local Co-ordinate Reference:	Well Anschutz State 5-62-35-6457C2B
Company:	Bill Barrett Corp.	TVD Reference:	Well @ 4596.00usft
Project:	Weld Co., CO	MD Reference:	Well @ 4596.00usft
Site:	Sec.35-T5N-R62W	North Reference:	True
Well:	Anschutz State 5-62-35-6457C2B	Survey Calculation Method:	Minimum Curvature
Wellbore:	Wellbore #1		
Design:	Design #1		

Planned Survey										
Measured Depth (usft)	Inclination (°)	Azimuth (°)	Vertical Depth (usft)	+N/-S (usft)	+E/-W (usft)	Vertical Section (usft)	Dogleg Rate (°/100usft)	Build Rate (°/100usft)	Turn Rate (°/100usft)	
11,400.00	90.37	89.03	6,199.62	-1,376.98	4,604.15	4,580.18	0.00	0.00	0.00	
11,500.00	90.37	89.03	6,198.97	-1,375.28	4,704.14	4,680.18	0.00	0.00	0.00	
11,600.00	90.37	89.03	6,198.33	-1,373.59	4,804.12	4,780.18	0.00	0.00	0.00	
11,700.00	90.37	89.03	6,197.69	-1,371.90	4,904.10	4,880.18	0.00	0.00	0.00	
11,800.00	90.37	89.03	6,197.05	-1,370.20	5,004.09	4,980.18	0.00	0.00	0.00	
11,900.00	90.37	89.03	6,196.40	-1,368.51	5,104.07	5,080.17	0.00	0.00	0.00	
12,000.00	90.37	89.03	6,195.76	-1,366.82	5,204.06	5,180.17	0.00	0.00	0.00	
12,100.00	90.37	89.03	6,195.12	-1,365.12	5,304.04	5,280.17	0.00	0.00	0.00	
12,200.00	90.37	89.03	6,194.48	-1,363.43	5,404.02	5,380.17	0.00	0.00	0.00	
12,300.00	90.37	89.03	6,193.83	-1,361.74	5,504.01	5,480.16	0.00	0.00	0.00	
12,400.00	90.37	89.03	6,193.19	-1,360.04	5,603.99	5,580.16	0.00	0.00	0.00	
12,500.00	90.37	89.03	6,192.55	-1,358.35	5,703.97	5,680.16	0.00	0.00	0.00	
12,600.00	90.37	89.03	6,191.91	-1,356.66	5,803.96	5,780.16	0.00	0.00	0.00	
12,700.00	90.37	89.03	6,191.27	-1,354.97	5,903.94	5,880.16	0.00	0.00	0.00	
12,800.00	90.37	89.03	6,190.62	-1,353.27	6,003.92	5,980.15	0.00	0.00	0.00	
12,900.00	90.37	89.03	6,189.98	-1,351.58	6,103.91	6,080.15	0.00	0.00	0.00	
13,000.00	90.37	89.03	6,189.34	-1,349.89	6,203.89	6,180.15	0.00	0.00	0.00	
13,100.00	90.37	89.03	6,188.70	-1,348.19	6,303.88	6,280.15	0.00	0.00	0.00	
13,200.00	90.37	89.03	6,188.05	-1,346.50	6,403.86	6,380.15	0.00	0.00	0.00	
13,300.00	90.37	89.03	6,187.41	-1,344.81	6,503.84	6,480.14	0.00	0.00	0.00	
13,400.00	90.37	89.03	6,186.77	-1,343.11	6,603.83	6,580.14	0.00	0.00	0.00	
13,500.00	90.37	89.03	6,186.13	-1,341.42	6,703.81	6,680.14	0.00	0.00	0.00	
13,600.00	90.37	89.03	6,185.49	-1,339.73	6,803.79	6,780.14	0.00	0.00	0.00	
13,700.00	90.37	89.03	6,184.84	-1,338.03	6,903.78	6,880.14	0.00	0.00	0.00	
13,800.00	90.37	89.03	6,184.20	-1,336.34	7,003.76	6,980.13	0.00	0.00	0.00	
13,900.00	90.37	89.03	6,183.56	-1,334.65	7,103.74	7,080.13	0.00	0.00	0.00	
14,000.00	90.37	89.03	6,182.92	-1,332.95	7,203.73	7,180.13	0.00	0.00	0.00	
14,100.00	90.37	89.03	6,182.27	-1,331.26	7,303.71	7,280.13	0.00	0.00	0.00	
14,200.00	90.37	89.03	6,181.63	-1,329.57	7,403.69	7,380.13	0.00	0.00	0.00	
14,300.00	90.37	89.03	6,180.99	-1,327.87	7,503.68	7,480.12	0.00	0.00	0.00	
14,400.00	90.37	89.03	6,180.35	-1,326.18	7,603.66	7,580.12	0.00	0.00	0.00	
14,500.00	90.37	89.03	6,179.70	-1,324.49	7,703.65	7,680.12	0.00	0.00	0.00	
14,600.00	90.37	89.03	6,179.06	-1,322.80	7,803.63	7,780.12	0.00	0.00	0.00	
14,700.00	90.37	89.03	6,178.42	-1,321.10	7,903.61	7,880.12	0.00	0.00	0.00	
14,800.00	90.37	89.03	6,177.78	-1,319.41	8,003.60	7,980.11	0.00	0.00	0.00	
14,900.00	90.37	89.03	6,177.14	-1,317.72	8,103.58	8,080.11	0.00	0.00	0.00	
15,000.00	90.37	89.03	6,176.49	-1,316.02	8,203.56	8,180.11	0.00	0.00	0.00	
15,100.00	90.37	89.03	6,175.85	-1,314.33	8,303.55	8,280.11	0.00	0.00	0.00	
15,200.00	90.37	89.03	6,175.21	-1,312.64	8,403.53	8,380.10	0.00	0.00	0.00	
15,300.00	90.37	89.03	6,174.57	-1,310.94	8,503.51	8,480.10	0.00	0.00	0.00	
15,400.00	90.37	89.03	6,173.92	-1,309.25	8,603.50	8,580.10	0.00	0.00	0.00	
15,500.00	90.37	89.03	6,173.28	-1,307.56	8,703.48	8,680.10	0.00	0.00	0.00	
15,600.00	90.37	89.03	6,172.64	-1,305.86	8,803.47	8,780.10	0.00	0.00	0.00	
15,700.00	90.37	89.03	6,172.00	-1,304.17	8,903.45	8,880.09	0.00	0.00	0.00	
15,800.00	90.37	89.03	6,171.35	-1,302.48	9,003.43	8,980.09	0.00	0.00	0.00	
15,900.00	90.37	89.03	6,170.71	-1,300.78	9,103.42	9,080.09	0.00	0.00	0.00	
16,000.00	90.37	89.03	6,170.07	-1,299.09	9,203.40	9,180.09	0.00	0.00	0.00	
16,100.00	90.37	89.03	6,169.43	-1,297.40	9,303.38	9,280.09	0.00	0.00	0.00	
16,200.00	90.37	89.03	6,168.79	-1,295.70	9,403.37	9,380.08	0.00	0.00	0.00	
16,300.00	90.37	89.03	6,168.14	-1,294.01	9,503.35	9,480.08	0.00	0.00	0.00	
16,400.00	90.37	89.03	6,167.50	-1,292.32	9,603.33	9,580.08	0.00	0.00	0.00	
16,500.00	90.37	89.03	6,166.86	-1,290.63	9,703.32	9,680.08	0.00	0.00	0.00	
16,600.00	90.37	89.03	6,166.22	-1,288.93	9,803.30	9,780.08	0.00	0.00	0.00	

Database:	EDMDBBW	Local Co-ordinate Reference:	Well Anschutz State 5-62-35-6457C2B
Company:	Bill Barrett Corp.	TVD Reference:	Well @ 4596.00usft
Project:	Weld Co., CO	MD Reference:	Well @ 4596.00usft
Site:	Sec.35-T5N-R62W	North Reference:	True
Well:	Anschutz State 5-62-35-6457C2B	Survey Calculation Method:	Minimum Curvature
Wellbore:	Wellbore #1		
Design:	Design #1		

Planned Survey									
Measured Depth (usft)	Inclination (°)	Azimuth (°)	Vertical Depth (usft)	+N/-S (usft)	+E/-W (usft)	Vertical Section (usft)	Dogleg Rate (°/100usft)	Build Rate (°/100usft)	Turn Rate (°/100usft)
TD at 16634.02									
16,634.02	90.37	89.03	6,166.00	-1,288.36	9,837.32	9,814.10	0.00	0.00	0.00

Design Targets									
Target Name	Dip Angle (°)	Dip Dir. (°)	TVD (usft)	+N/-S (usft)	+E/-W (usft)	Northing (usft)	Easting (usft)	Latitude	Longitude
- hit/miss target									
- Shape									
Anschutz State 5-62-35-	0.00	0.00	6,166.00	-1,288.36	9,837.32	1,372,640.359	3,344,709.910	40° 20' 58.920 N	104° 15' 47.470 W
- plan hits target center									
- Point									

Casing Points					
Measured Depth (usft)	Vertical Depth (usft)	Name	Casing Diameter (")	Hole Diameter (")	
6,824.11	6,229.00	7" Csg.	7	8-3/4	

Formations					
Measured Depth (usft)	Vertical Depth (usft)	Name	Lithology	Dip (°)	Dip Direction (°)
4,546.50	4,246.00	Sussex		-0.37	89.03
5,100.37	4,780.00	Shannon		-0.37	89.03
6,240.94	5,915.00	Sharon Springs		-0.37	89.03
6,372.63	6,031.00	Niobrara		-0.37	89.03
6,432.19	6,077.00	A Chalk		-0.37	89.03
6,522.69	6,137.00	B Chalk		-0.37	89.03
6,696.21	6,212.00	Top C Target		-0.37	89.03

Plan Annotations				
Measured Depth (usft)	Vertical Depth (usft)	Local Coordinates		Comment
		+N/-S (usft)	+E/-W (usft)	
900.00	900.00	0.00	0.00	Start Build 2.00
2,268.74	2,217.26	-306.54	-94.62	Start 1933.54 hold at 2268.74 MD
4,202.29	3,934.28	-1,156.05	-356.83	Start Drop -2.00
5,571.03	5,251.54	-1,462.59	-451.45	Start 500.01 hold at 5571.03 MD
6,071.04	5,751.55	-1,462.59	-451.45	Start Build 12.00
6,824.11	6,229.00	-1,454.45	29.01	Start 9809.91 hold at 6824.11 MD
16,634.02	6,166.00	-1,288.36	9,837.32	TD at 16634.02