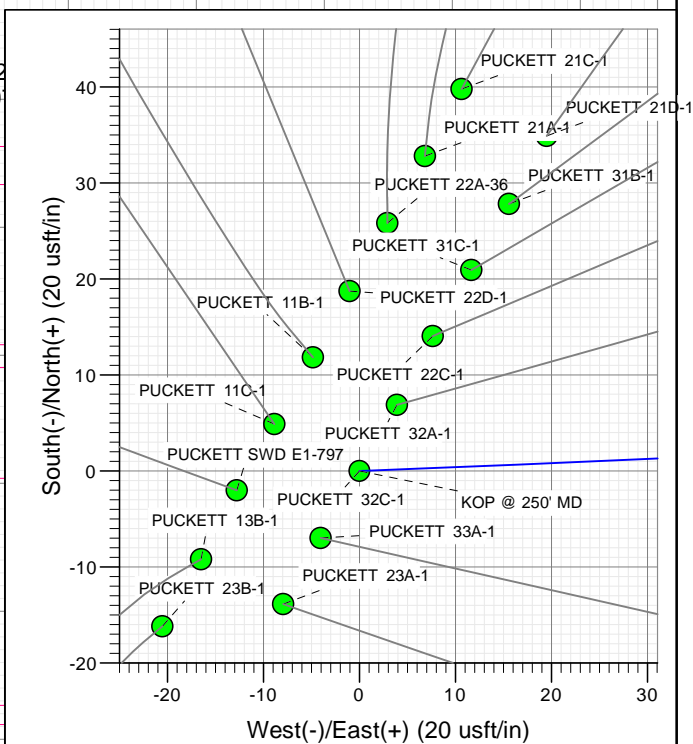
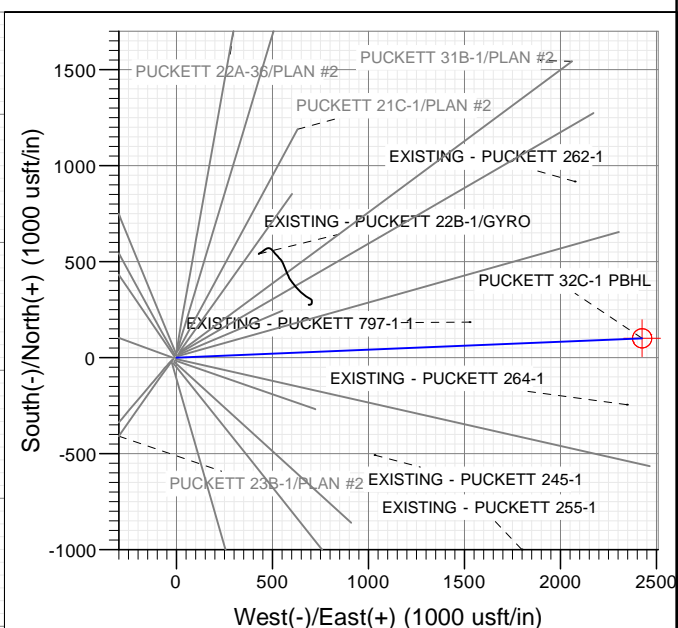
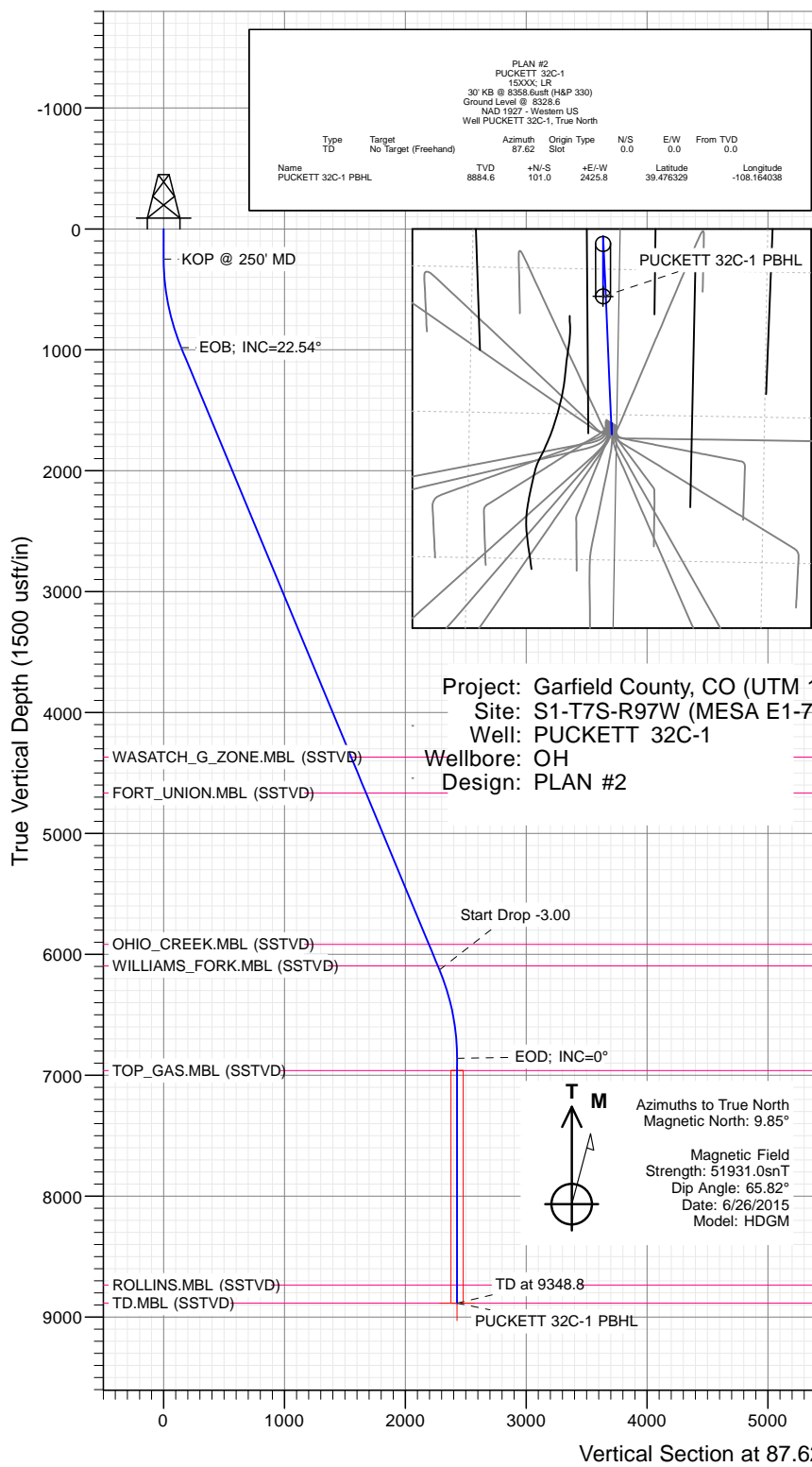




# SECTION DETAILS

Sec	MD	Inc	Azi	TVD	+N/-S	+E/-W	Dleg	TFace	Vsect	Target	Annotation
1	0.0	0.00	0.00	0.0	0.0	0.0	0.00	0.00	0.0		KOP @ 250' MD
2	250.0	0.00	0.00	250.0	0.0	0.0	0.00	0.00	0.0		EOB; INC=22.54°
3	1001.4	22.54	87.62	982.2	6.1	145.8	3.00	87.62	145.9		Start Drop -3.00
4	6573.4	22.54	87.62	6128.4	94.9	2280.0	0.00	0.00	2282.0		EOD; INC=0°
5	7324.8	0.00	0.00	6860.6	101.0	2425.8	3.00	180.00	2427.9		TD at 9348.8
6	9348.8	0.00	0.00	8884.6	101.0	2425.8	0.00	0.00	2427.9	PUCKETT 32C-1 PBHL	



## WELL DETAILS: PUCKETT 32C-1

+N/-S	+E/-W	Northing	Ground Level:	8328.6	Latitude	Longitude
0.0	0.0	14347787.60	Easting	2438326.80	39.476052	-108.172628



## Planning Report

<b>Database:</b>	USA EDM 5000 Multi Users DB	<b>Local Co-ordinate Reference:</b>	Well PUCKETT 32C-1
<b>Company:</b>	Caerus Oil & Gas	<b>TVD Reference:</b>	30' KB @ 8358.6usft (H&P 330)
<b>Project:</b>	Garfield County, CO (UTM 12N)	<b>MD Reference:</b>	30' KB @ 8358.6usft (H&P 330)
<b>Site:</b>	S1-T7S-R97W (MESA E1-797)	<b>North Reference:</b>	True
<b>Well:</b>	PUCKETT 32C-1	<b>Survey Calculation Method:</b>	Minimum Curvature
<b>Wellbore:</b>	OH		
<b>Design:</b>	PLAN #2		

<b>Project</b>	Garfield County, CO (UTM 12N)		
<b>Map System:</b>	Universal Transverse Mercator (US Survey Feet)	<b>System Datum:</b>	Mean Sea Level
<b>Geo Datum:</b>	NAD 1927 - Western US		
<b>Map Zone:</b>	Zone 12N (114 W to 108 W)		

Site		S1-T7S-R97W (MESA E1-797)			
Site Position:		Northing:	14,347,813.50 usft	Latitude:	39.476123
From:	Map	Easting:	2,438,328.90 usft	Longitude:	-108.172618
Position Uncertainty:	0.0 usft	Slot Radius:	13-3/16 "	Grid Convergence:	1.80 °

Well	PUCKETT 32C-1					
Well Position	+N/-S	0.0 usft	Northing:	14,347,787.60 usft	Latitude:	39.476052
	+E/-W	0.0 usft	Easting:	2,438,326.80 usft	Longitude:	-108.172628
Position Uncertainty		0.0 usft	Wellhead Elevation:	0.0 usft	Ground Level:	8,328.6 usft

<b>Wellbore</b>	OH				
<b>Magnetics</b>	<b>Model Name</b>	<b>Sample Date</b>	<b>Declination (°)</b>	<b>Dip Angle (°)</b>	<b>Field Strength (nT)</b>
	HDGM	6/26/2015	9.85	65.82	51,931

<b>Design</b>	PLAN #2			
<b>Audit Notes:</b>				
<b>Version:</b>	<b>Phase:</b>	PLAN	<b>Tie On Depth:</b>	0.0
<b>Vertical Section:</b>	<b>Depth From (TVD) (usft)</b>	<b>+N/-S (usft)</b>	<b>+E/-W (usft)</b>	<b>Direction (°)</b>
	0.0	0.0	0.0	87.62

<b>Plan Sections</b>										
Measured Depth (usft)	Inclination (°)	Azimuth (°)	Vertical Depth (usft)	+N/-S (usft)	+E/-W (usft)	Dogleg Rate (°/100usft)	Build Rate (°/100usft)	Turn Rate (°/100usft)	TFO (°)	Target
0.0	0.00	0.00	0.0	0.0	0.0	0.00	0.00	0.00	0.00	
250.0	0.00	0.00	250.0	0.0	0.0	0.00	0.00	0.00	0.00	
1,001.4	22.54	87.62	982.2	6.1	145.8	3.00	3.00	0.00	87.62	
6,573.4	22.54	87.62	6,128.4	94.9	2,280.0	0.00	0.00	0.00	0.00	
7,324.8	0.00	0.00	6,860.6	101.0	2,425.8	3.00	-3.00	0.00	180.00	
9,348.8	0.00	0.00	8,884.6	101.0	2,425.8	0.00	0.00	0.00	0.00	PUCKETT 32C-1 PBI

# Planning Report

<b>Database:</b>	USA EDM 5000 Multi Users DB	<b>Local Co-ordinate Reference:</b>	Well PUCKETT 32C-1
<b>Company:</b>	Caerus Oil & Gas	<b>TVD Reference:</b>	30' KB @ 8358.6usft (H&P 330)
<b>Project:</b>	Garfield County, CO (UTM 12N)	<b>MD Reference:</b>	30' KB @ 8358.6usft (H&P 330)
<b>Site:</b>	S1-T7S-R97W (MESA E1-797)	<b>North Reference:</b>	True
<b>Well:</b>	PUCKETT 32C-1	<b>Survey Calculation Method:</b>	Minimum Curvature
<b>Wellbore:</b>	OH		
<b>Design:</b>	PLAN #2		

## Planned Survey

Measured Depth (usft)	Inclination (°)	Azimuth (°)	Vertical Depth (usft)	+N/-S (usft)	+E/-W (usft)	Vertical Section (usft)	Dogleg Rate (°/100usft)	Build Rate (°/100u)	Comments / Formations
0.0	0.00	0.00	0.0	0.0	0.0	0.0	0.00	0.00	
100.0	0.00	0.00	100.0	0.0	0.0	0.0	0.00	0.00	
200.0	0.00	0.00	200.0	0.0	0.0	0.0	0.00	0.00	
250.0	0.00	0.00	250.0	0.0	0.0	0.0	0.00	0.00	KOP @ 250' MD
300.0	1.50	87.62	300.0	0.0	0.7	0.7	3.00	3.00	
400.0	4.50	87.62	399.8	0.2	5.9	5.9	3.00	3.00	
500.0	7.50	87.62	499.3	0.7	16.3	16.3	3.00	3.00	
600.0	10.50	87.62	598.0	1.3	32.0	32.0	3.00	3.00	
700.0	13.50	87.62	695.8	2.2	52.7	52.8	3.00	3.00	
800.0	16.50	87.62	792.4	3.3	78.6	78.6	3.00	3.00	
900.0	19.50	87.62	887.5	4.6	109.5	109.5	3.00	3.00	
1,000.0	22.50	87.62	980.9	6.0	145.3	145.4	3.00	3.00	
1,001.4	22.54	87.62	982.2	6.1	145.8	145.9	3.00	3.00	EOB; INC=22.54°
1,100.0	22.54	87.62	1,073.2	7.6	183.6	183.7	0.00	0.00	
1,200.0	22.54	87.62	1,165.6	9.2	221.9	222.0	0.00	0.00	
1,300.0	22.54	87.62	1,258.0	10.8	260.2	260.4	0.00	0.00	
1,400.0	22.54	87.62	1,350.3	12.4	298.5	298.7	0.00	0.00	
1,500.0	22.54	87.62	1,442.7	14.0	336.8	337.1	0.00	0.00	
1,600.0	22.54	87.62	1,535.0	15.6	375.1	375.4	0.00	0.00	
1,700.0	22.54	87.62	1,627.4	17.2	413.4	413.7	0.00	0.00	
1,800.0	22.54	87.62	1,719.8	18.8	451.7	452.1	0.00	0.00	
1,900.0	22.54	87.62	1,812.1	20.4	490.0	490.4	0.00	0.00	
2,000.0	22.54	87.62	1,904.5	22.0	528.3	528.7	0.00	0.00	
2,100.0	22.54	87.62	1,996.8	23.6	566.6	567.1	0.00	0.00	
2,200.0	22.54	87.62	2,089.2	25.2	604.9	605.4	0.00	0.00	
2,300.0	22.54	87.62	2,181.6	26.8	643.2	643.7	0.00	0.00	
2,400.0	22.54	87.62	2,273.9	28.4	681.5	682.1	0.00	0.00	
2,500.0	22.54	87.62	2,366.3	30.0	719.8	720.4	0.00	0.00	
2,600.0	22.54	87.62	2,458.6	31.6	758.1	758.7	0.00	0.00	
2,700.0	22.54	87.62	2,551.0	33.2	796.4	797.1	0.00	0.00	
2,800.0	22.54	87.62	2,643.4	34.8	834.7	835.4	0.00	0.00	
2,900.0	22.54	87.62	2,735.7	36.4	873.0	873.8	0.00	0.00	
3,000.0	22.54	87.62	2,828.1	37.9	911.3	912.1	0.00	0.00	
3,100.0	22.54	87.62	2,920.4	39.5	949.6	950.4	0.00	0.00	
3,200.0	22.54	87.62	3,012.8	41.1	987.9	988.8	0.00	0.00	
3,300.0	22.54	87.62	3,105.2	42.7	1,026.2	1,027.1	0.00	0.00	
3,400.0	22.54	87.62	3,197.5	44.3	1,064.5	1,065.4	0.00	0.00	
3,500.0	22.54	87.62	3,289.9	45.9	1,102.8	1,103.8	0.00	0.00	
3,600.0	22.54	87.62	3,382.2	47.5	1,141.1	1,142.1	0.00	0.00	
3,700.0	22.54	87.62	3,474.6	49.1	1,179.4	1,180.4	0.00	0.00	
3,800.0	22.54	87.62	3,567.0	50.7	1,217.7	1,218.8	0.00	0.00	
3,900.0	22.54	87.62	3,659.3	52.3	1,256.0	1,257.1	0.00	0.00	
4,000.0	22.54	87.62	3,751.7	53.9	1,294.3	1,295.4	0.00	0.00	
4,100.0	22.54	87.62	3,844.0	55.5	1,332.6	1,333.8	0.00	0.00	
4,200.0	22.54	87.62	3,936.4	57.1	1,370.9	1,372.1	0.00	0.00	
4,300.0	22.54	87.62	4,028.8	58.7	1,409.2	1,410.4	0.00	0.00	
4,400.0	22.54	87.62	4,121.1	60.3	1,447.5	1,448.8	0.00	0.00	
4,500.0	22.54	87.62	4,213.5	61.9	1,485.8	1,487.1	0.00	0.00	
4,600.0	22.54	87.62	4,305.8	63.5	1,524.1	1,525.5	0.00	0.00	
4,668.0	22.54	87.62	4,368.6	64.6	1,550.2	1,551.5	0.00	0.00	WASATCH_G_ZONE.MBL (SSTVD)
4,700.0	22.54	87.62	4,398.2	65.1	1,562.4	1,563.8	0.00	0.00	
4,800.0	22.54	87.62	4,490.6	66.7	1,600.7	1,602.1	0.00	0.00	

# Planning Report

<b>Database:</b>	USA EDM 5000 Multi Users DB	<b>Local Co-ordinate Reference:</b>	Well PUCKETT 32C-1
<b>Company:</b>	Caerus Oil & Gas	<b>TVD Reference:</b>	30' KB @ 8358.6usft (H&P 330)
<b>Project:</b>	Garfield County, CO (UTM 12N)	<b>MD Reference:</b>	30' KB @ 8358.6usft (H&P 330)
<b>Site:</b>	S1-T7S-R97W (MESA E1-797)	<b>North Reference:</b>	True
<b>Well:</b>	PUCKETT 32C-1	<b>Survey Calculation Method:</b>	Minimum Curvature
<b>Wellbore:</b>	OH		
<b>Design:</b>	PLAN #2		

## Planned Survey

Measured Depth (usft)	Inclination (°)	Azimuth (°)	Vertical Depth (usft)	+N/-S (usft)	+E/-W (usft)	Vertical Section (usft)	Dogleg Rate (°/100usft)	Build Rate (°/100u)	Comments / Formations
4,900.0	22.54	87.62	4,582.9	68.3	1,639.0	1,640.5	0.00	0.00	
4,989.5	22.54	87.62	4,665.6	69.7	1,673.3	1,674.8	0.00	0.00	FORT_UNION.MBL (SSTVD)
5,000.0	22.54	87.62	4,675.3	69.9	1,677.3	1,678.8	0.00	0.00	
5,100.0	22.54	87.62	4,767.6	71.4	1,715.6	1,717.1	0.00	0.00	
5,200.0	22.54	87.62	4,860.0	73.0	1,753.9	1,755.5	0.00	0.00	
5,300.0	22.54	87.62	4,952.4	74.6	1,792.3	1,793.8	0.00	0.00	
5,400.0	22.54	87.62	5,044.7	76.2	1,830.6	1,832.1	0.00	0.00	
5,500.0	22.54	87.62	5,137.1	77.8	1,868.9	1,870.5	0.00	0.00	
5,600.0	22.54	87.62	5,229.4	79.4	1,907.2	1,908.8	0.00	0.00	
5,700.0	22.54	87.62	5,321.8	81.0	1,945.5	1,947.1	0.00	0.00	
5,800.0	22.54	87.62	5,414.2	82.6	1,983.8	1,985.5	0.00	0.00	
5,900.0	22.54	87.62	5,506.5	84.2	2,022.1	2,023.8	0.00	0.00	
6,000.0	22.54	87.62	5,598.9	85.8	2,060.4	2,062.2	0.00	0.00	
6,100.0	22.54	87.62	5,691.2	87.4	2,098.7	2,100.5	0.00	0.00	
6,200.0	22.54	87.62	5,783.6	89.0	2,137.0	2,138.8	0.00	0.00	
6,300.0	22.54	87.62	5,876.0	90.6	2,175.3	2,177.2	0.00	0.00	
6,344.0	22.54	87.62	5,916.6	91.3	2,192.1	2,194.0	0.00	0.00	OHIO_CREEK.MBL (SSTVD)
6,400.0	22.54	87.62	5,968.3	92.2	2,213.6	2,215.5	0.00	0.00	
6,500.0	22.54	87.62	6,060.7	93.8	2,251.9	2,253.8	0.00	0.00	
6,536.7	22.54	87.62	6,094.6	94.4	2,265.9	2,267.9	0.00	0.00	WILLIAMS_FORK.MBL (SSTVD)
6,573.4	22.54	87.62	6,128.4	94.9	2,280.0	2,282.0	0.00	0.00	Start Drop -3.00
6,600.0	21.74	87.62	6,153.1	95.4	2,290.0	2,292.0	3.00	-3.00	
6,700.0	18.74	87.62	6,246.9	96.8	2,324.6	2,326.6	3.00	-3.00	
6,800.0	15.74	87.62	6,342.4	98.0	2,354.2	2,356.2	3.00	-3.00	
6,900.0	12.74	87.62	6,439.3	99.1	2,378.8	2,380.8	3.00	-3.00	
7,000.0	9.74	87.62	6,537.4	99.9	2,398.2	2,400.3	3.00	-3.00	
7,100.0	6.74	87.62	6,636.4	100.5	2,412.6	2,414.7	3.00	-3.00	
7,200.0	3.74	87.62	6,735.9	100.8	2,421.7	2,423.8	3.00	-3.00	
7,300.0	0.74	87.62	6,835.8	101.0	2,425.6	2,427.7	3.00	-3.00	
7,324.8	0.00	0.00	6,860.6	101.0	2,425.8	2,427.9	3.00	-3.00	EOD; INC=0°
7,400.0	0.00	0.00	6,935.8	101.0	2,425.8	2,427.9	0.00	0.00	
7,424.8	0.00	0.00	6,960.6	101.0	2,425.8	2,427.9	0.00	0.00	TOP_GAS.MBL (SSTVD)
7,500.0	0.00	0.00	7,035.8	101.0	2,425.8	2,427.9	0.00	0.00	
7,600.0	0.00	0.00	7,135.8	101.0	2,425.8	2,427.9	0.00	0.00	
7,700.0	0.00	0.00	7,235.8	101.0	2,425.8	2,427.9	0.00	0.00	
7,800.0	0.00	0.00	7,335.8	101.0	2,425.8	2,427.9	0.00	0.00	
7,900.0	0.00	0.00	7,435.8	101.0	2,425.8	2,427.9	0.00	0.00	
8,000.0	0.00	0.00	7,535.8	101.0	2,425.8	2,427.9	0.00	0.00	
8,100.0	0.00	0.00	7,635.8	101.0	2,425.8	2,427.9	0.00	0.00	
8,200.0	0.00	0.00	7,735.8	101.0	2,425.8	2,427.9	0.00	0.00	
8,300.0	0.00	0.00	7,835.8	101.0	2,425.8	2,427.9	0.00	0.00	
8,400.0	0.00	0.00	7,935.8	101.0	2,425.8	2,427.9	0.00	0.00	
8,500.0	0.00	0.00	8,035.8	101.0	2,425.8	2,427.9	0.00	0.00	
8,600.0	0.00	0.00	8,135.8	101.0	2,425.8	2,427.9	0.00	0.00	
8,700.0	0.00	0.00	8,235.8	101.0	2,425.8	2,427.9	0.00	0.00	
8,800.0	0.00	0.00	8,335.8	101.0	2,425.8	2,427.9	0.00	0.00	
8,900.0	0.00	0.00	8,435.8	101.0	2,425.8	2,427.9	0.00	0.00	
9,000.0	0.00	0.00	8,535.8	101.0	2,425.8	2,427.9	0.00	0.00	
9,100.0	0.00	0.00	8,635.8	101.0	2,425.8	2,427.9	0.00	0.00	
9,198.8	0.00	0.00	8,734.6	101.0	2,425.8	2,427.9	0.00	0.00	ROLLINS.MBL (SSTVD)
9,200.0	0.00	0.00	8,735.8	101.0	2,425.8	2,427.9	0.00	0.00	
9,300.0	0.00	0.00	8,835.8	101.0	2,425.8	2,427.9	0.00	0.00	

## Planning Report

<b>Database:</b>	USA EDM 5000 Multi Users DB	<b>Local Co-ordinate Reference:</b>	Well PUCKETT 32C-1
<b>Company:</b>	Caerus Oil & Gas	<b>TVD Reference:</b>	30' KB @ 8358.6usft (H&P 330)
<b>Project:</b>	Garfield County, CO (UTM 12N)	<b>MD Reference:</b>	30' KB @ 8358.6usft (H&P 330)
<b>Site:</b>	S1-T7S-R97W (MESA E1-797)	<b>North Reference:</b>	True
<b>Well:</b>	PUCKETT 32C-1	<b>Survey Calculation Method:</b>	Minimum Curvature
<b>Wellbore:</b>	OH		
<b>Design:</b>	PLAN #2		

Planned Survey									
Measured Depth (usft)	Inclination (°)	Azimuth (°)	Vertical Depth (usft)	+N/-S (usft)	+E/-W (usft)	Vertical Section (usft)	Dogleg Rate (°/100usft)	Build Rate (°/100u)	Comments / Formations
9,348.8	0.00	0.00	8,884.6	101.0	2,425.8	2,427.9	0.00	0.00	TD at 9348.8 - TD.MBL (SSTVD)

Targets									
Target Name - hit/miss target - Shape	Dip Angle (°)	Dip Dir. (°)	TVD (usft)	+N/-S (usft)	+E/-W (usft)	Northing (usft)	Easting (usft)	Latitude	Longitude
PUCKETT 32C-1 PBHL - plan hits target center - Circle (radius 50.0)	0.00	0.00	8,884.6	101.0	2,425.8	14,347,964.70	2,440,748.20	39.476329	-108.164038

Formations					
Measured Depth (usft)	Vertical Depth (usft)	Name	Lithology	Dip (°)	Dip Direction (°)
4,668.0	4,368.6	WASATCH_G_ZONE.MBL (SSTVD)		0.00	
4,989.5	4,665.6	FORT_UNION.MBL (SSTVD)		0.00	
6,344.0	5,916.6	OHIO_CREEK.MBL (SSTVD)		0.00	
6,536.7	6,094.6	WILLIAMS_FORK.MBL (SSTVD)		0.00	
7,424.8	6,960.6	TOP_GAS.MBL (SSTVD)		0.00	
9,198.8	8,734.6	ROLLINS.MBL (SSTVD)		0.00	
9,348.8	8,884.6	TD.MBL (SSTVD)		0.00	

Plan Annotations				
Measured Depth (usft)	Vertical Depth (usft)	Local Coordinates		Comment
		+N/-S (usft)	+E/-W (usft)	
250.0	250.0	0.0	0.0	KOP @ 250' MD
1,001.4	982.2	6.1	145.8	EOB; INC=22.54°
6,573.4	6,128.4	94.9	2,280.0	Start Drop -3.00
7,324.8	6,860.6	101.0	2,425.8	EOD; INC=0°
9,348.8	8,884.6	101.0	2,425.8	TD at 9348.8