

Kyle E. Rutz—On behalf of Lot 40, Inc.
Colorado Licensed Professional Land Surveyor No. 38307
DATE: 01/19/2015
PROJECT#: 2014209

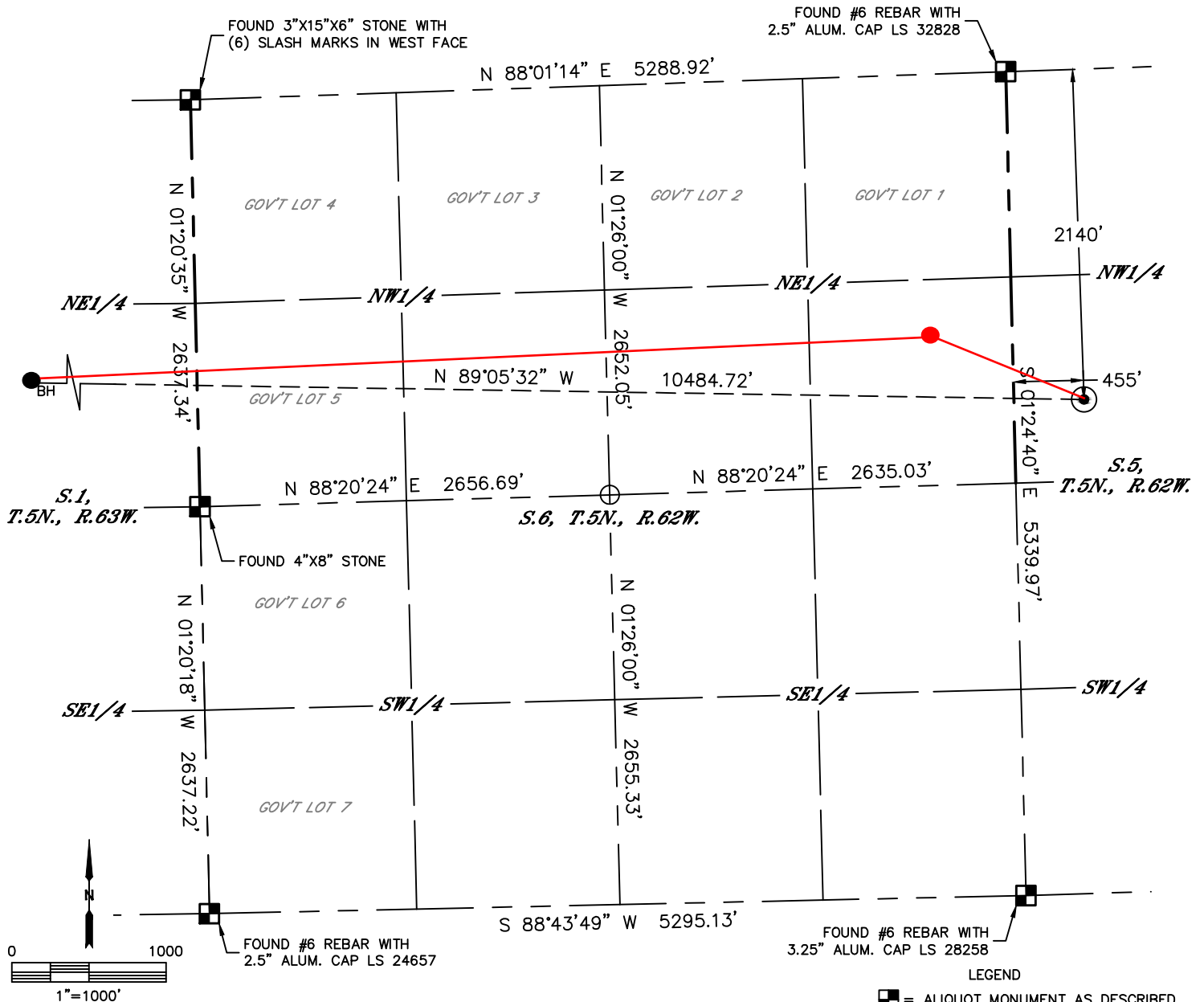


Lat40°, Inc. 6250 W. 10th Street, Unit 2, Greeley, CO 970-515-5294

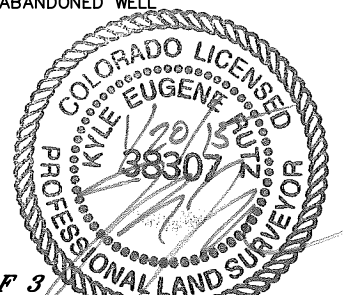
WELL LOCATION CERTIFICATE

WELLS RANCH BB01-664

SECTION: 5
TOWNSHIP: 5N
RANGE: 62W
6TH. P.M.
WELD COUNTY, CO



- LEGEND
- = ALIQUOT MONUMENT AS DESCRIBED
 - = CALCULATED POSITION
 - = SURFACE HOLE LOCATION (SHL)
 - ▲ = ENTRY POINT LOCATION (EP)
 - = BOTTOM HOLE LOCATION (BHL)
 - BH = EXISTING WELL
 - ⊙ = ABANDONED WELL



SHEET 2 OF 3

Kyle E. Rutz—On behalf of Lat40°, Inc.
Colorado Licensed Professional Land Surveyor No. 38307
DATE: 01/19/2015
PROJECT#: 2014209

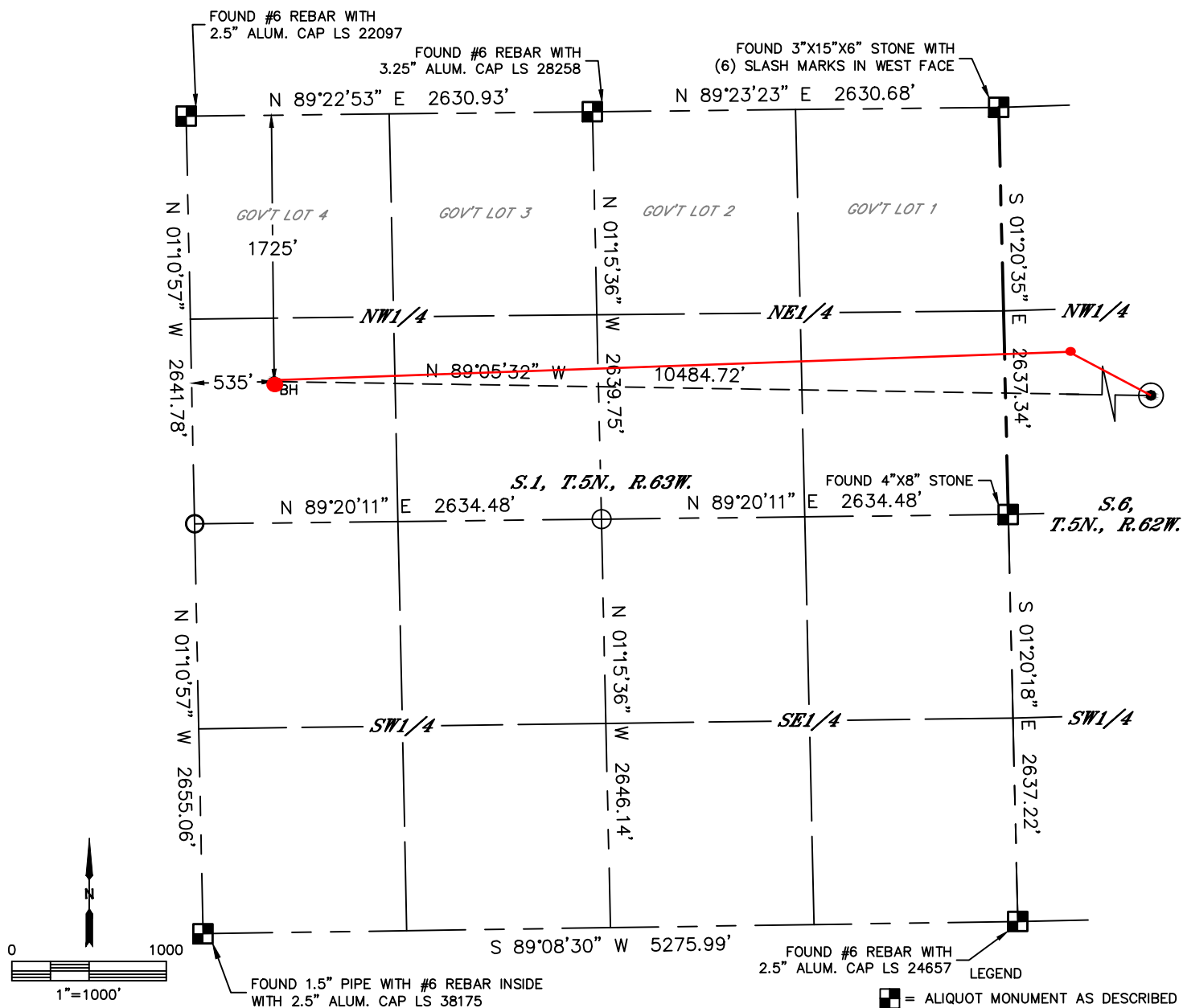


Lat40°, Inc. 6250 W. 10th Street, Unit 2, Greeley, CO 970-515-5294

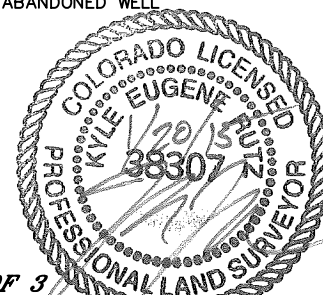
WELL LOCATION CERTIFICATE

WELLS RANCH BB01-664

SECTION: 5
TOWNSHIP: 5N
RANGE: 62W
6TH. P.M.
WELD COUNTY, CO



- LEGEND
- = ALIQUOT MONUMENT AS DESCRIBED
 - = CALCULATED POSITION
 - = SURFACE HOLE LOCATION (SHL)
 - ▲ = ENTRY POINT LOCATION (EP)
 - BH = BOTTOM HOLE LOCATION (BHL)
 - ⊙ = EXISTING WELL
 - ⊙ = ABANDONED WELL



SHEET 3 OF 3

Kyle E. Rutz—On behalf of Lat40, Inc.
Colorado Licensed Professional Land Surveyor No. 38307
DATE: 01/19/2015
PROJECT#: 2014209