

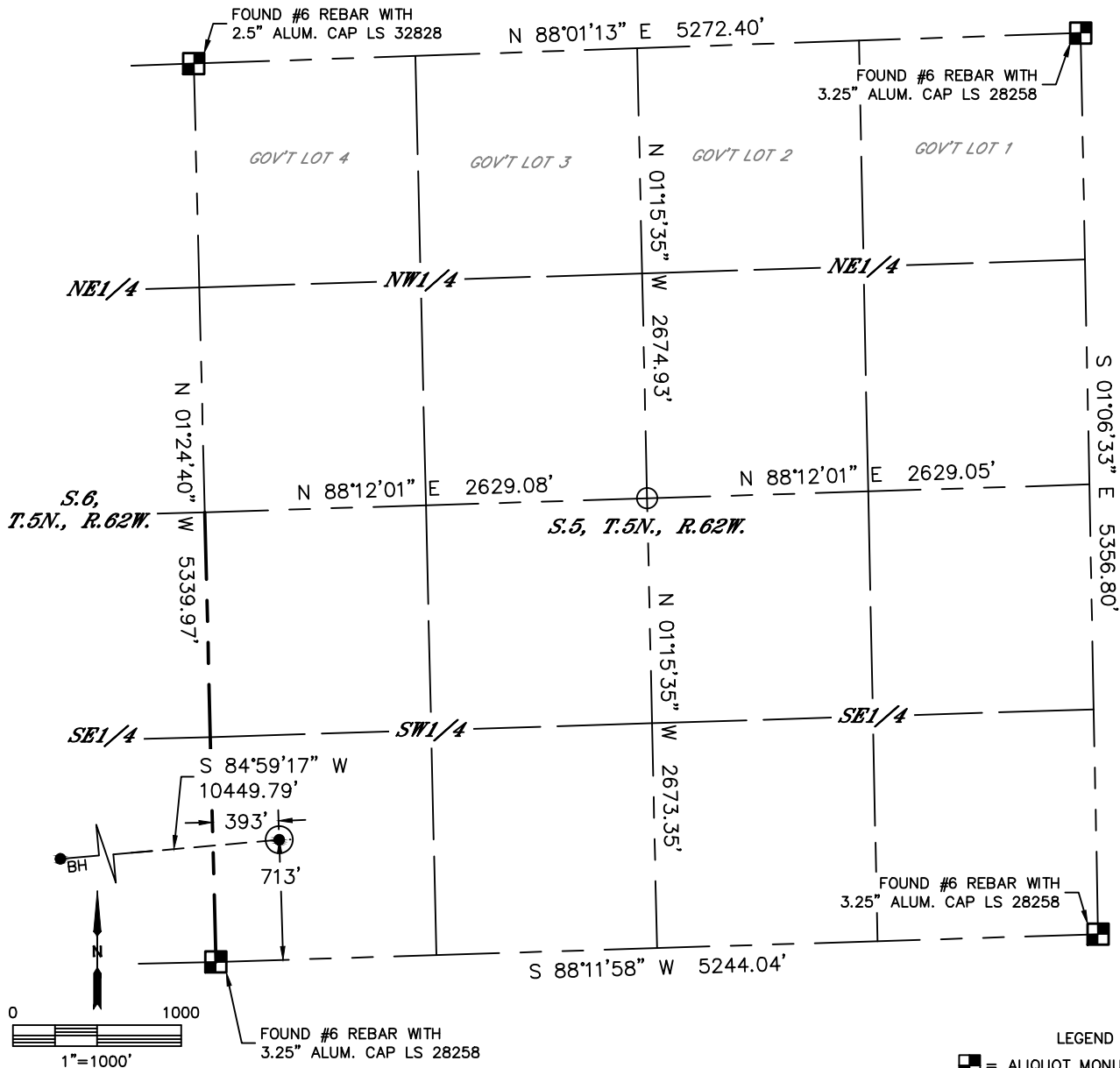


Lat40°, Inc. 6250 W. 10th Street, Unit 2, Greeley, CO 970-515-5294

# WELL LOCATION CERTIFICATE

## WELLS RANCH BB01-611

SECTION: 5  
TOWNSHIP: 5N  
RANGE: 62W  
6TH. P.M.  
WELD COUNTY, CO



**LEGEND**

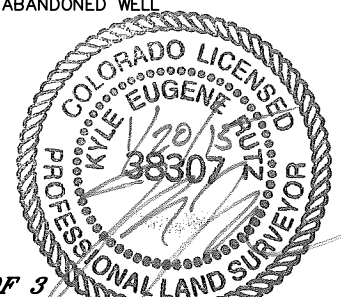
- = ALIQUOT MONUMENT AS DESCRIBED
- = CALCULATED POSITION
- ⊙ = SURFACE HOLE LOCATION (SHL)
- ▲ = ENTRY POINT LOCATION (EP)
- = BOTTOM HOLE LOCATION (BHL)
- ⊕ = EXISTING WELL
- ⊗ = ABANDONED WELL

CLIENT: NOBLE ENERGY INC					LANDMAN: GREG WILSON									
INSTRUMENT OPERATOR: ADAM BEAUPREZ					SURVEY DATE: 11/25/14					SURFACE USE: RANGELAND				
SHL FOOTAGE		SHL LAT°	SHL LONG°	SHL PDOP	SHL ELEV	SHL 1/4/1/4		SHL S-T-R						
713	FSL	393	FWL	40.42324	-104.35526	3.1	4662	SWSW		5-5-62				

BHL FOOTAGE		BHL LAT°	BHL LONG°	BHL S-T-R		
1	FSL	535	FWL	40.42110	-104.39268	1-5-63

NEAREST CULTURAL ITEMS	
EX. WELL	N/A
BUILDING	5280'+
BUILDING UNIT	5280'+
HIGH OCCUPANCY BUILDING UNIT	5280'+
DESIGNATED OUTSIDE ACTIVITY AREA	5280'+
PUBLIC ROAD	5280'+
ABOVE GROUND UTILITY	5280'+
RAILROAD	5280'+
PROPERTY LINE	±393' W

NOTE:  
1) Bearings shown are Grid Bearings of the Colorado State Plane Coordinate System, North Zone, North American Datum 1983. The lineal dimensions as contained herein are based upon the "U.S. Survey Foot."  
2) Distances to section lines measured at 90 degrees from said section lines.  
3) Ground elevations are based on an observed GPS elevation (NAVD 1988 DATUM).  
4) Latitude and Longitude shown are (NAD 83 DATUM).  
5) IMPROVEMENTS: See LOCATION DRAWING for all visible improvements within 500' of oil and gas location.  
6) This map does not represent a boundary survey.



**SHEET 1 OF 3**

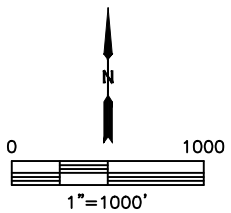
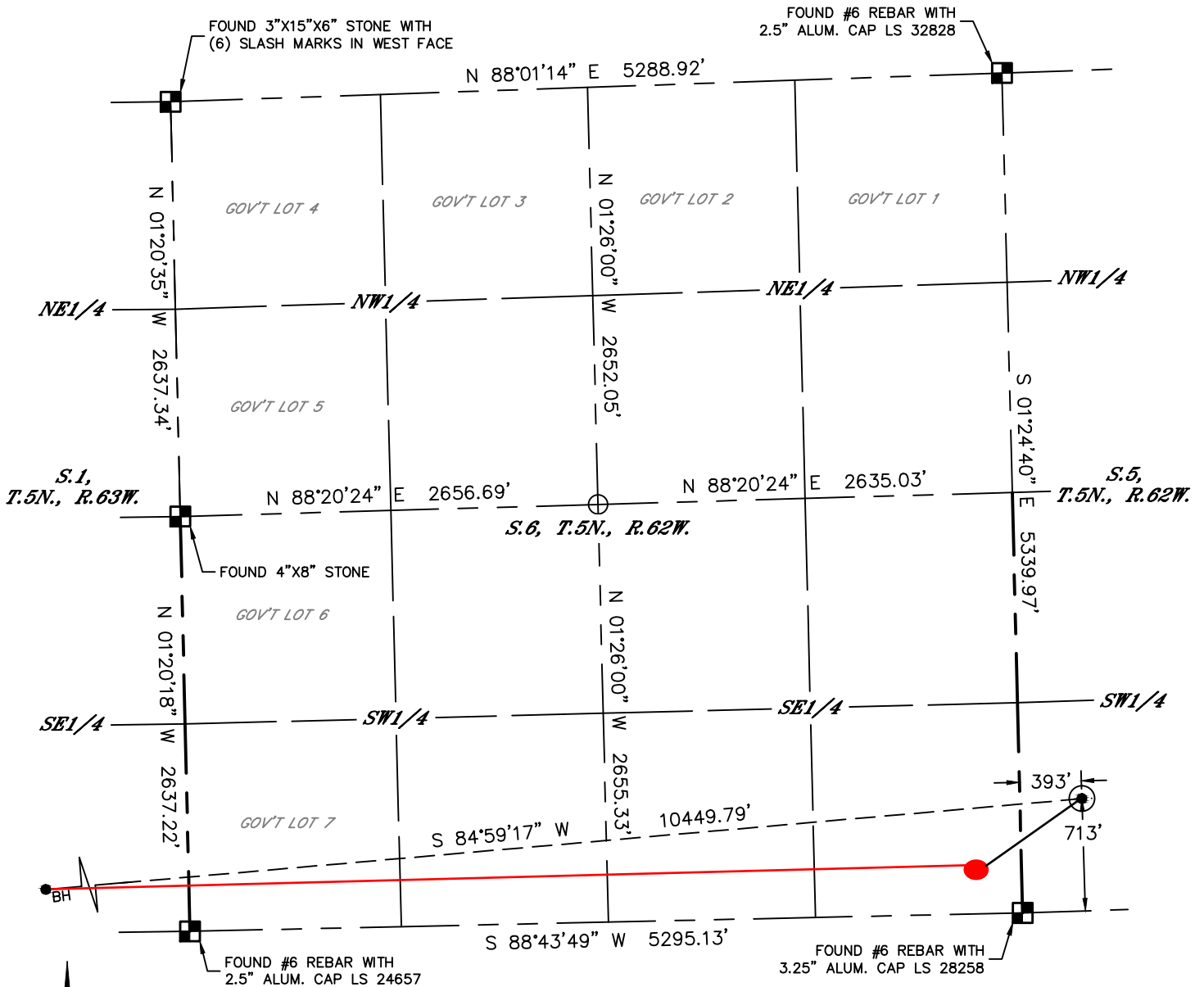
Kyle E. Rutz—On behalf of Lat40, Inc.  
Colorado Licensed Professional Land Surveyor No. 38307  
DATE: 01/19/2015  
PROJECT#: 2014209



# WELL LOCATION CERTIFICATE

WELLS RANCH BB01-611

SECTION: 5  
TOWNSHIP: 5N  
RANGE: 62W  
6TH. P.M.  
WELD COUNTY, CO



- LEGEND
- = ALIQUOT MONUMENT AS DESCRIBED
  - = CALCULATED POSITION
  - = SURFACE HOLE LOCATION (SHL)
  - ▲ = ENTRY POINT LOCATION (EP)
  - = BOTTOM HOLE LOCATION (BHL)
  - ⊙ = EXISTING WELL
  - ⊙ = ABANDONED WELL



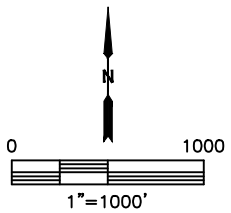
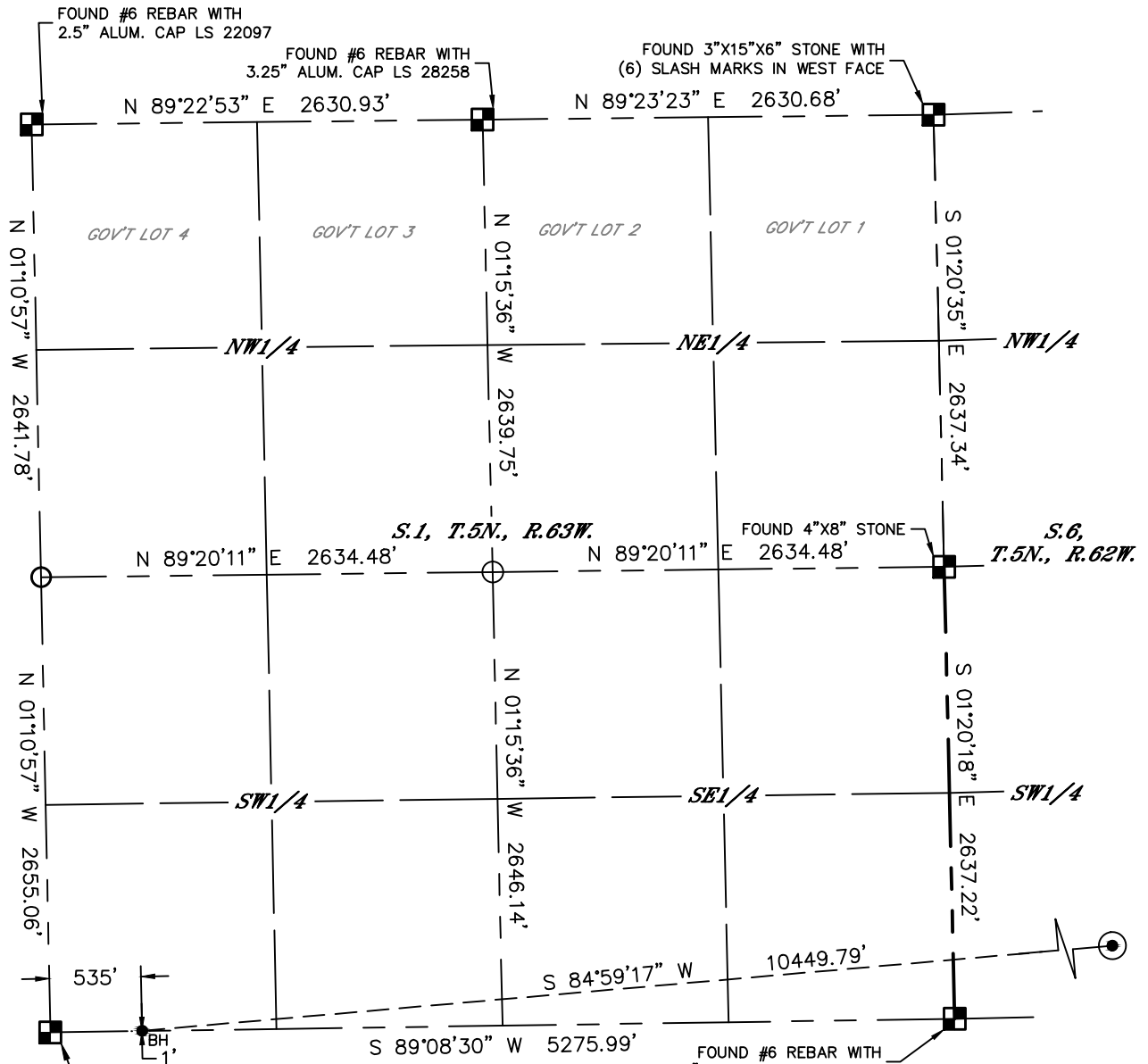


Lat40°, Inc. 6250 W. 10th Street, Unit 2, Greeley, CO 970-515-5294

# WELL LOCATION CERTIFICATE

## WELLS RANCH BB01-611

SECTION: 5  
TOWNSHIP: 5N  
RANGE: 62W  
6TH. P.M.  
WELD COUNTY, CO



- LEGEND
- = ALIQUOT MONUMENT AS DESCRIBED
  - = CALCULATED POSITION
  - ⊙ = SURFACE HOLE LOCATION (SHL)
  - ▲ = ENTRY POINT LOCATION (EP)
  - = BOTTOM HOLE LOCATION (BHL)
  - ⊕ = EXISTING WELL
  - ⊙ = ABANDONED WELL

