

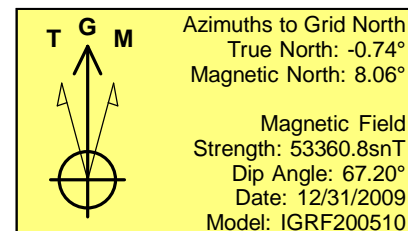
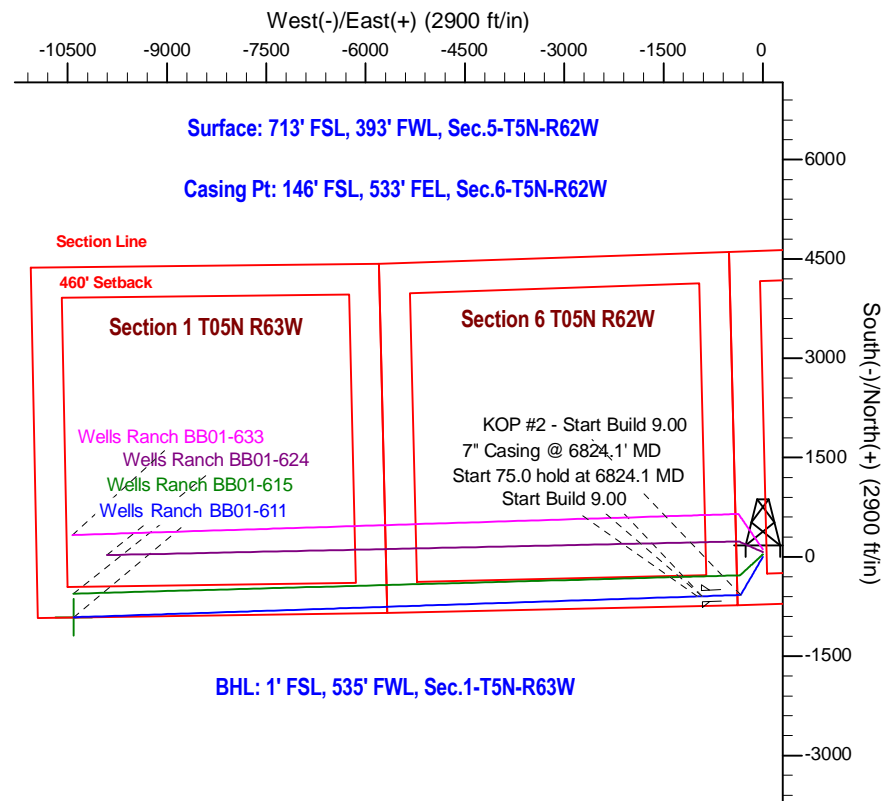
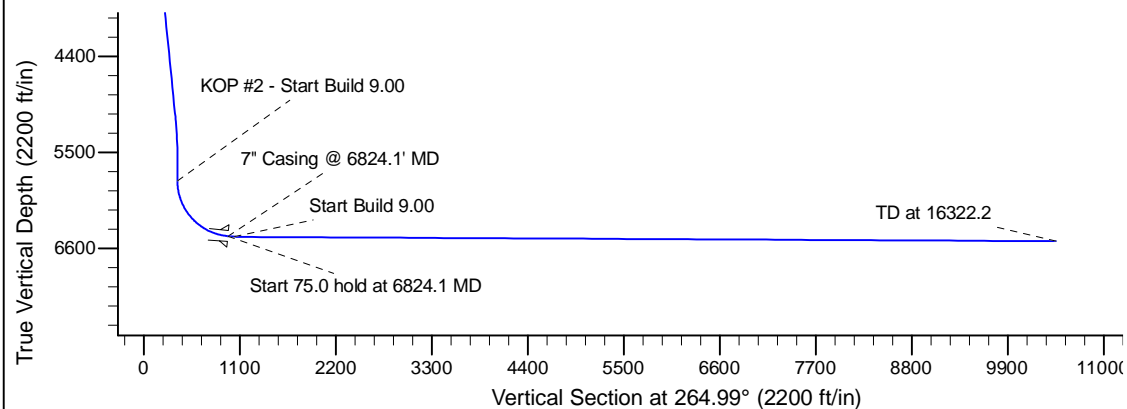
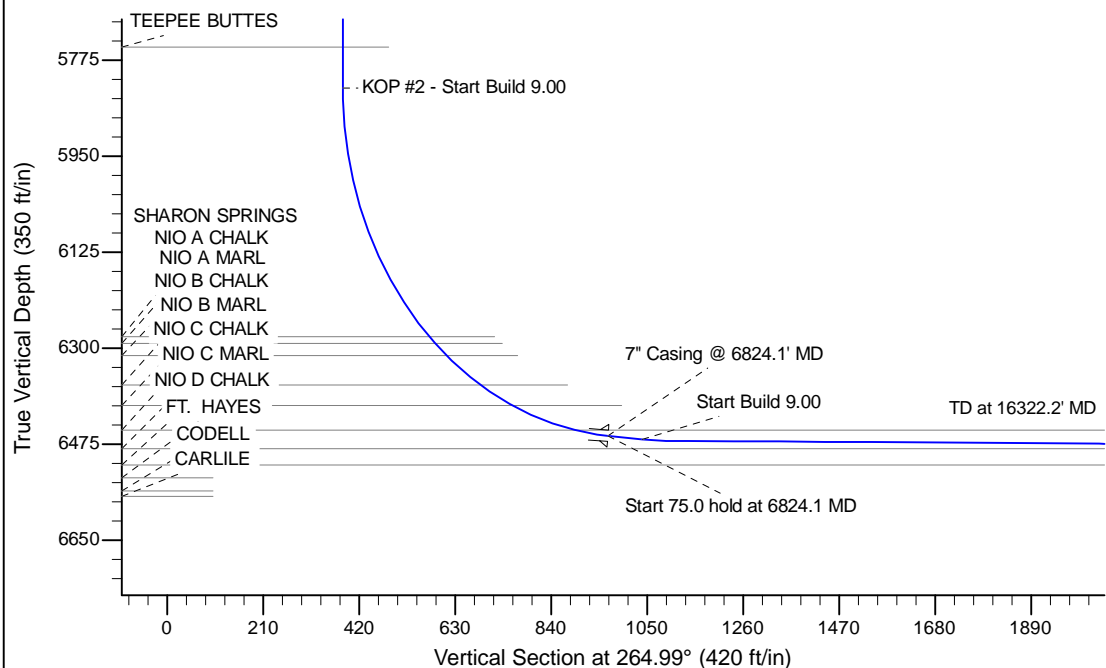
Project: Wattenberg Field
 Site: BB (Sec.5-T05N-R62W) Weld County, CO
 Well: Wells Ranch BB01-611
 Wellbore: Original Drilling
 Design: APD - Rev 0

Northern Region Drilling - Working

Geodetic System: US State Plane 1983
 Datum: North American Datum 1983
 Ellipsoid: GRS 1980
 Zone: Colorado Northern Zone
 System Datum: Mean Sea Level

SECTION DETAILS

Sec	MD	Inc	Azi	TVD	+N/-S	+E/-W	Dleg	TFace	Vsect	Target
1	0.0	0.00	0.00	0.0	0.0	0.0	0.00	0.00	0.0	
2	1200.0	0.00	0.00	1200.0	0.0	0.0	0.00	0.00	0.0	
3	1685.6	9.71	210.23	1683.3	-35.5	-20.7	2.00	210.23	23.7	
4	5143.6	9.71	210.23	5091.7	-539.5	-314.3	0.00	0.00	360.2	
5	5629.2	0.00	0.00	5575.0	-575.0	-335.0	2.00	180.00	383.9	
6	5879.7	0.00	0.00	5825.5	-575.0	-335.0	0.00	0.00	383.9	
7	6824.1	85.00	268.08	6459.7	-594.4	-915.8	9.00	268.08	964.2	
8	6899.1	85.00	268.08	6466.2	-596.9	-990.5	0.00	0.00	1038.8	
9	6951.4	89.70	268.08	6468.6	-598.7	-1042.6	9.00	0.00	1090.9	
10	16322.2	89.70	268.08	6517.7	-911.9	-10408.1	0.00	0.00	10448.0	Wells Ranch BB01-611 BHL 1'FSL, 535'FWL



WELL DETAILS: Wells Ranch BB01-611					
Ground Level: 4662.0					
0.0	0.0	Northing 1399083.84	Easting 3318703.80	Latitude 40.423240	Longitude -104.355260
Plan: APD - Rev 0 (Wells Ranch BB01-611/Original Drilling)					
Created By: Shailey Jewell			Date: 10:30, April 16 2015		
OK to submit with 2A as per Noble Drilling 4/16/2015 12:07					