

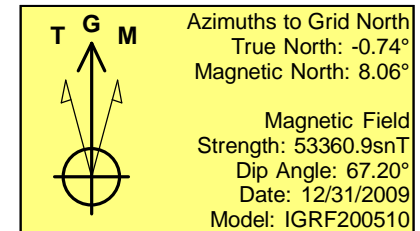
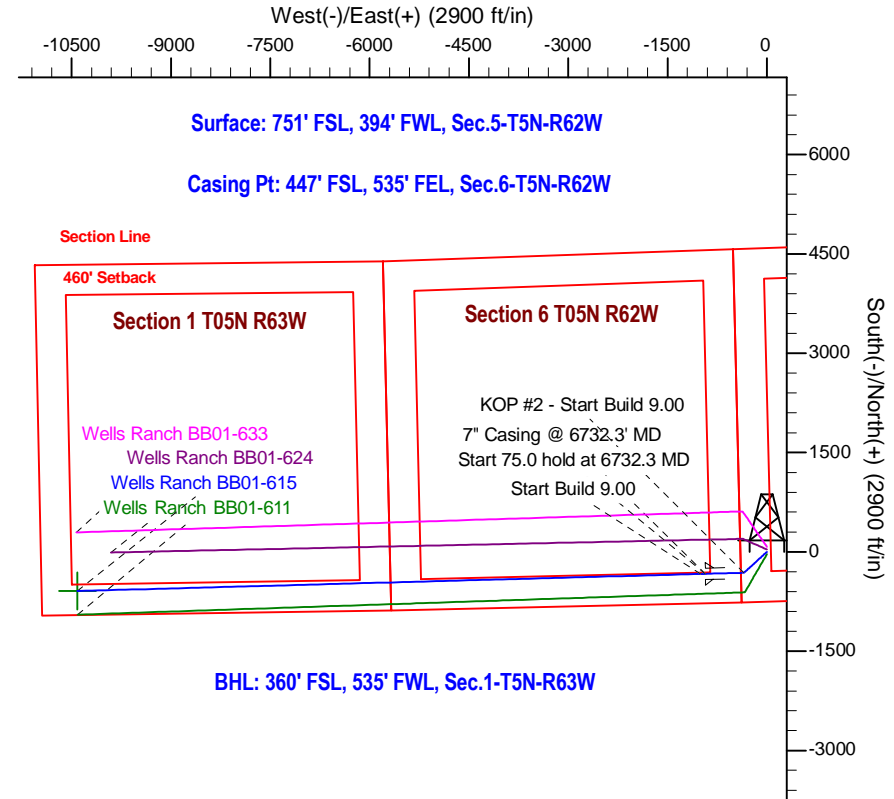
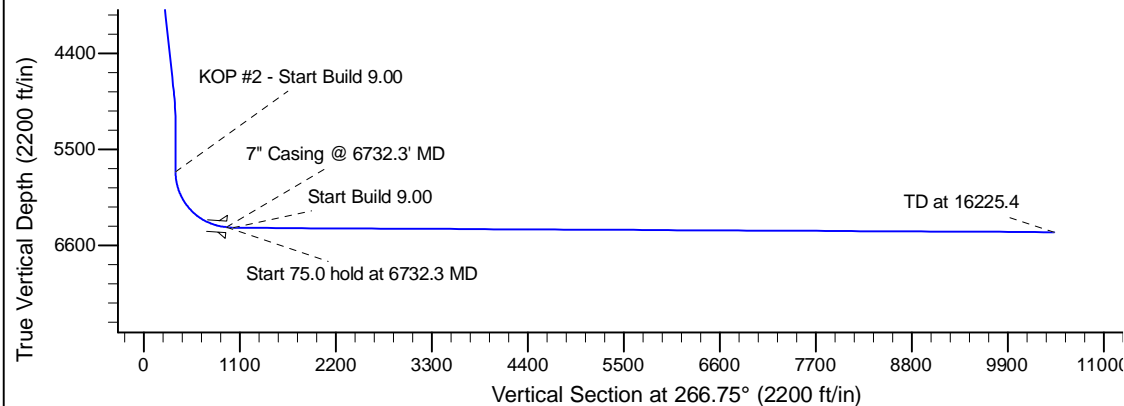
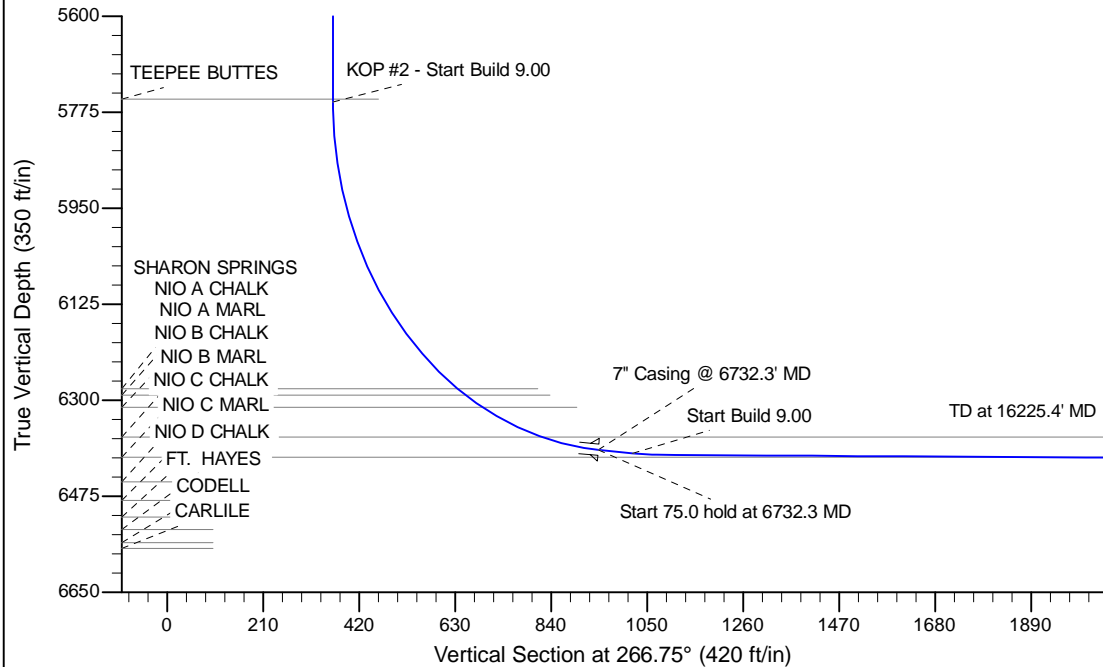
Project: Wattenberg Field
Site: BB (Sec.5-T05N-R62W) Weld County, CO
Well: Wells Ranch BB01-615
Wellbore: Original Drilling
Design: APD - Rev 0

Northern Region Drilling - Working

Geodetic System: US State Plane 1983
Datum: North American Datum 1983
Ellipsoid: GRS 1980
Zone: Colorado Northern Zone
System Datum: Mean Sea Level

SECTION DETAILS

Sec	MD	Inc	Azi	TVD	+N/-S	+E/-W	Dleg	TFace	VSec	Target
1	0.0	0.00	0.00	0.0	0.0	0.0	0.00	0.00	0.0	
2	1500.0	0.00	0.00	1500.0	0.0	0.0	0.00	0.00	0.0	
3	1901.3	8.03	227.60	1900.0	-18.9	-20.7	2.00	227.60	21.8	
4	4845.1	8.03	227.60	4815.0	-296.1	-324.3	0.00	0.00	340.5	
5	5246.5	0.00	0.00	5215.0	-315.0	-345.0	2.00	180.00	362.3	
6	5787.9	0.00	0.00	5756.4	-315.0	-345.0	0.00	0.00	362.3	
7	6732.3	85.00	268.43	6390.6	-330.9	-925.9	9.00	268.43	943.2	
8	6807.3	85.00	268.43	6397.1	-333.0	-1000.6	0.00	0.00	1017.9	
9	6859.5	89.70	268.43	6399.6	-334.4	-1052.7	9.00	0.00	1070.0	
10	16225.4	89.70	268.43	6448.6	-591.3	-10414.9	0.00	0.00	10431.7	Wells Ranch BB01-615 BHL 360'FSL, 535'FWL



WELL DETAILS: Wells Ranch BB01-615					
Ground Level: 4662.0					
0.0	0.0	Northing 1399120.26	Easting 3318703.33	Latitude 40.423340	Longitude -104.355260
Plan: APD - Rev 0 (Wells Ranch BB01-615/Original Drilling)					
Created By: Shailey Jewell			Date: 12:11, April 16 2015		
OK to submit with 2A as per Noble Drilling 4/16/2015 12:16					