

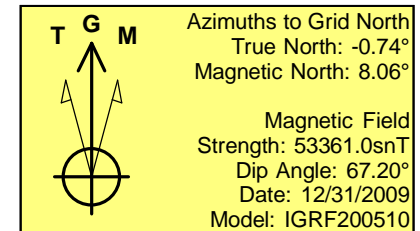
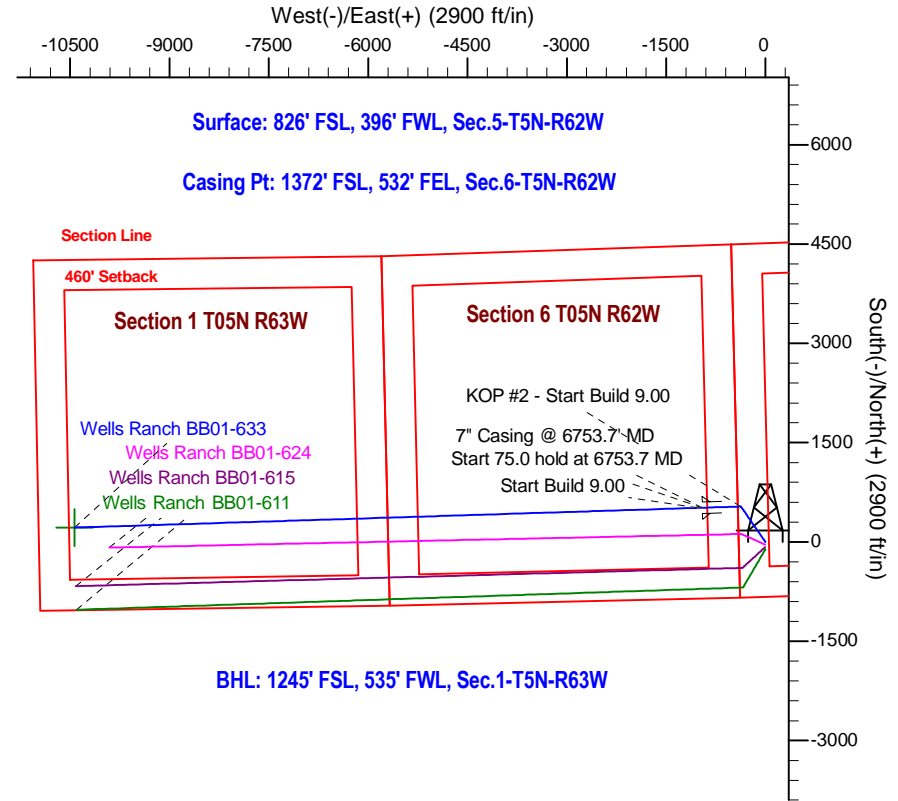
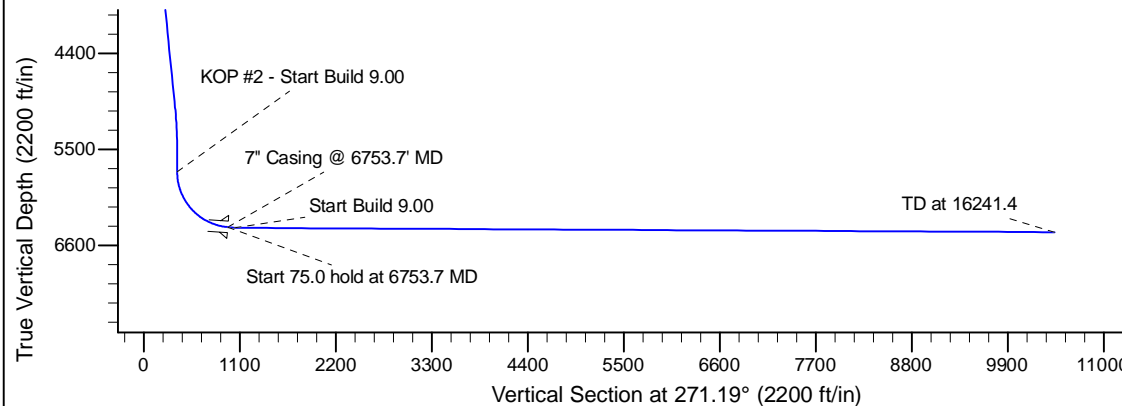
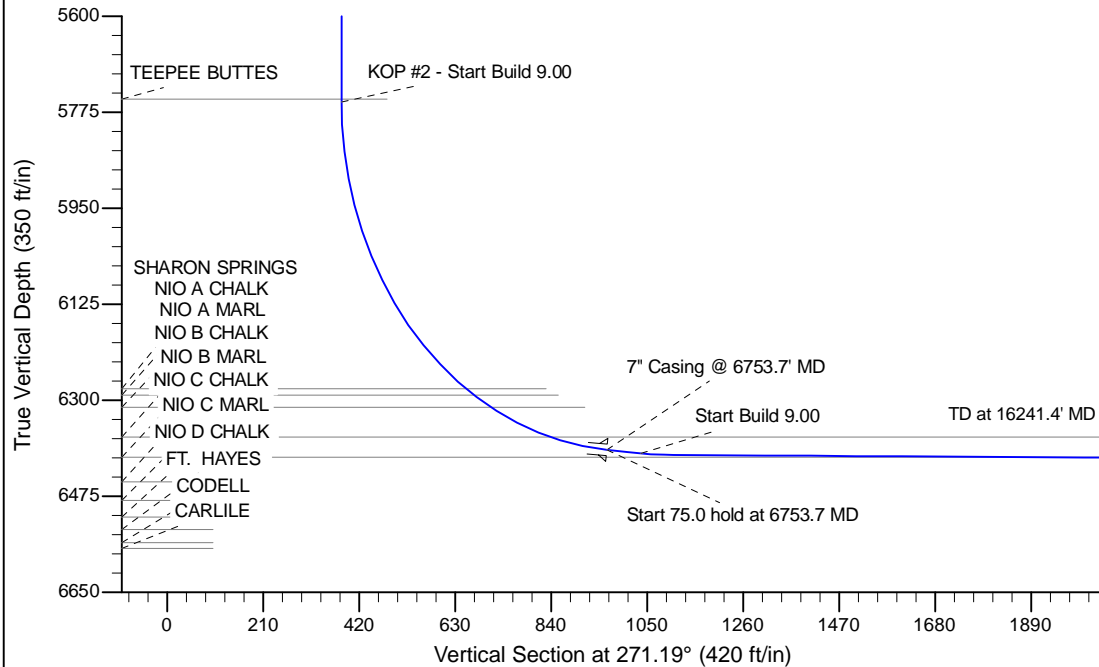
Project: Wattenberg Field
 Site: BB (Sec.5-T05N-R62W) Weld County, CO
 Well: Wells Ranch BB01-633
 Wellbore: Original Drilling
 Design: APD - Rev 0

Northern Region Drilling - Working

Geodetic System: US State Plane 1983
 Datum: North American Datum 1983
 Ellipsoid: GRS 1980
 Zone: Colorado Northern Zone
 System Datum: Mean Sea Level

SECTION DETAILS

Sec	MD	Inc	Azi	TVD	+N/-S	+E/-W	Dleg	TFace	VSec	Target
1	0.0	0.00	0.00	0.0	0.0	0.0	0.00	0.00	0.0	
2	1200.0	0.00	0.00	1200.0	0.0	0.0	0.00	0.00	0.0	
3	1683.8	9.68	325.33	1681.5	33.5	-23.2	2.00	325.33	23.9	
4	5068.9	9.68	325.33	5018.5	501.5	-346.8	0.00	0.00	357.2	
5	5552.8	0.00	0.00	5500.0	535.0	-370.0	2.00	180.00	381.1	
6	5809.3	0.00	0.00	5756.5	535.0	-370.0	0.00	0.00	381.1	
7	6753.7	85.00	268.19	6390.7	516.7	-950.8	9.00	268.19	961.4	
8	6828.7	85.00	268.19	6397.3	514.3	-1025.5	0.00	0.00	1036.0	
9	6881.0	89.70	268.19	6399.7	512.7	-1077.6	9.00	0.00	1088.1	
10	16241.4	89.70	268.19	6448.7	217.3	-10433.3	0.00	0.00	10435.6	Wells Ranch BB01-633 BHL 1245'FSL, 535'FWL



WELL DETAILS: Wells Ranch BB01-633					
Ground Level: 4662.0					
0.0	0.0	Northing	Easting	Latitude	Longitude
		1399196.79	3318705.12	40.423550	-104.355250
Plan: APD - Rev 0 (Wells Ranch BB01-633/Original Drilling)					
Created By: Shailey Jewell			Date: 12:26, April 16 2015		
OK to submit with 2A as per Noble Drilling					
4/16/2015 1:24					