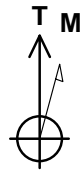
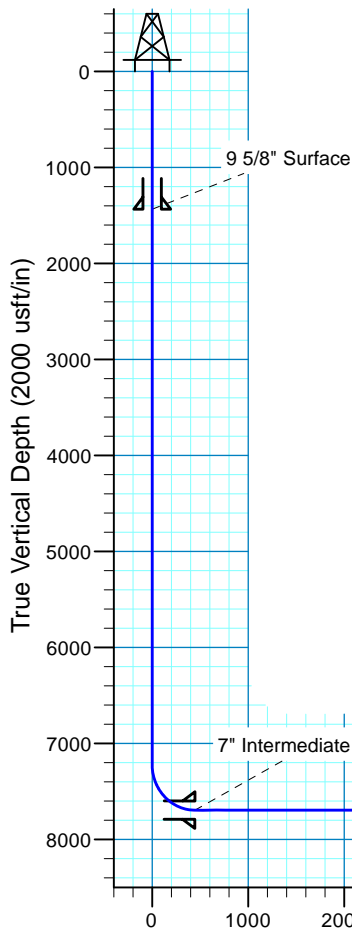
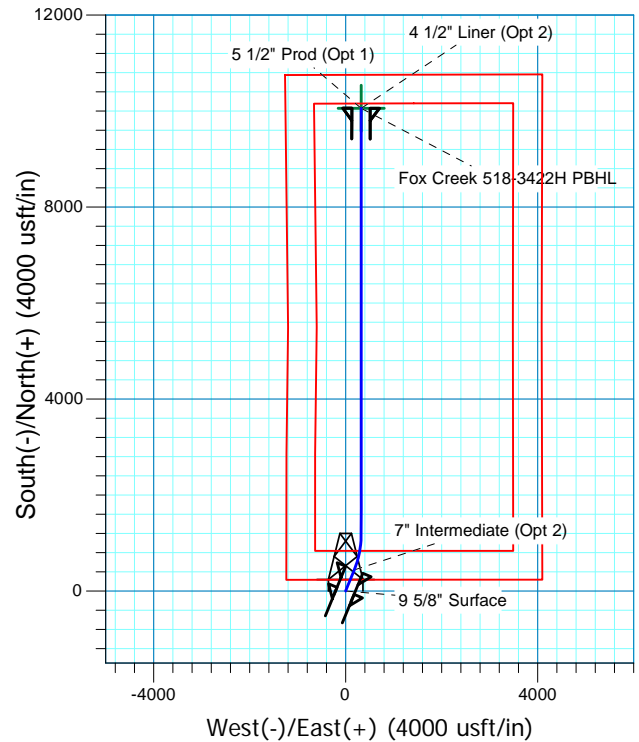


**Fox Creek 518-3422H**  
 Sec.34-T12N-R63W  
 Weld County, Colorado

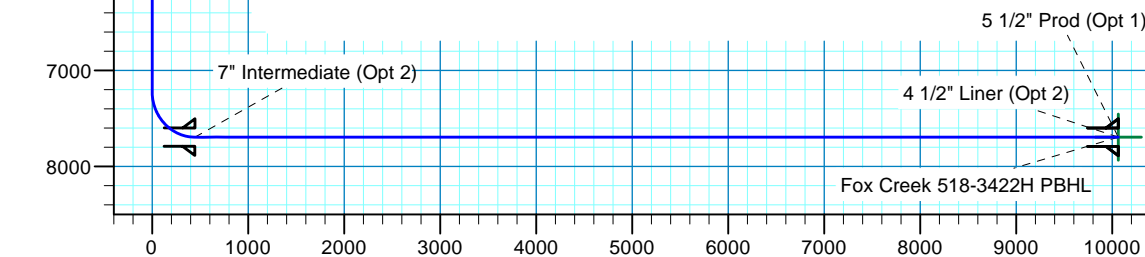
Surface Location				
NAD 1927 (NADCON CONUS) Colorado North 501				
Ground Elevation: 5436.0 RKB @ 5461.0usft (KB GL+25')				
Northing	Easting	Latitude	Longitude	
598929.22	2297212.04	40° 58' 20.991 N	104° 25' 25.551 W	



Azimuths to True North  
 Magnetic North: 8.29°  
 Magnetic Field  
 Strength: 52949.1snT  
 Dip Angle: 67.42°  
 Date: 6/10/2015  
 Model: IGRF2015



Project: DJ - Hereford Ranch  
 Site: Fox Creek F34 NWNW Pad  
 Well: Fox Creek 518-3422H  
 Plan: APD Plan (Plat Cert 5/19/415)



Vertical Section at 1.85° (2000 usft/in)

SECTION DETAILS										
Sec	MD	Inc	Azi	TVD	+N/-S	+E/-W	Dleg	TFace	VSect	Target
1	0.0	0.00	0.00	0.0	0.0	0.0	0.00	0.00	0.0	
2	7219.5	0.00	0.00	7219.5	0.0	0.0	0.00	0.00	0.0	
3	7969.5	90.00	22.30	7697.0	441.8	181.2	12.00	22.30	447.4	
4	8712.8	90.00	0.00	7697.0	1166.4	324.0	3.00	-90.00	1176.2	Fox Creek 518-3422H PBHL
5	17606.0	90.00	0.00	7697.0	10059.7	324.4	0.00	0.00	10064.9	Fox Creek 518-3422H PBHL
TARGET DETAILS										
Name	TVD	+N/-S	+E/-W	Northing	Easting	Latitude	Longitude	Shape		
Fox Creek 518-3422H PBHL	7697.0	10059.7	324.4	608992.08	2297414.33	41° 0' 0.385 N	104° 25' 21.321 W	Point		

# **Denver Division- Colorado**

**DJ - Hereford Ranch  
Fox Creek F34 NWNW Pad  
Fox Creek 518-3422H**

**OH**

**Plan: APD Plan (Plat Cert 5/19/415)**

## **Standard Planning Report**

**10 June, 2015**

# EOG Resources, Inc.

## Planning Report

<b>Database:</b>	EDM_DENVER	<b>Local Co-ordinate Reference:</b>	Well Fox Creek 518-3422H
<b>Company:</b>	Denver Division- Colorado	<b>TVD Reference:</b>	RKB @ 5461.0usft (KB GL+25')
<b>Project:</b>	DJ - Hereford Ranch	<b>MD Reference:</b>	RKB @ 5461.0usft (KB GL+25')
<b>Site:</b>	Fox Creek F34 NWNW Pad	<b>North Reference:</b>	True
<b>Well:</b>	Fox Creek 518-3422H	<b>Survey Calculation Method:</b>	Minimum Curvature
<b>Wellbore:</b>	OH		
<b>Design:</b>	APD Plan (Plat Cert 5/19/415)		

<b>Project</b>	DJ - Hereford Ranch, Weld County		
<b>Map System:</b>	US State Plane 1927 (Exact solution)	<b>System Datum:</b>	Mean Sea Level
<b>Geo Datum:</b>	NAD 1927 (NADCON CONUS)		
<b>Map Zone:</b>	Colorado North 501		

<b>Site</b>	Fox Creek F34 NWNW Pad		
<b>Site Position:</b>		<b>Northing:</b>	598,750.00 usft
<b>From:</b>	Map	<b>Easting:</b>	2,297,150.00 usft
<b>Position Uncertainty:</b>	0.0 usft	<b>Slot Radius:</b>	13-3/16 "
		<b>Latitude:</b>	40° 58' 19.228 N
		<b>Longitude:</b>	104° 25' 26.388 W
		<b>Grid Convergence:</b>	0.70 °

<b>Well</b>	Fox Creek 518-3422H		
<b>Well Position</b>	<b>+N/-S</b>	178.5 usft	<b>Northing:</b>
	<b>+E/-W</b>	64.2 usft	<b>Easting:</b>
<b>Position Uncertainty</b>	0.0 usft	<b>Wellhead Elevation:</b>	0.0 usft
		<b>Latitude:</b>	40° 58' 20.991 N
		<b>Longitude:</b>	104° 25' 25.551 W
		<b>Ground Level:</b>	5,436.0 usft

<b>Wellbore</b>	OH				
<b>Magnetics</b>	<b>Model Name</b>	<b>Sample Date</b>	<b>Declination (°)</b>	<b>Dip Angle (°)</b>	<b>Field Strength (nT)</b>
	IGRF2015	6/10/2015	8.29	67.42	52,949

<b>Design</b>	APD Plan (Plat Cert 5/19/415)			
<b>Audit Notes:</b>				
<b>Version:</b>	<b>Phase:</b>	PROTOTYPE	<b>Tie On Depth:</b>	0.0
<b>Vertical Section:</b>	<b>Depth From (TVD) (usft)</b>	<b>+N/-S (usft)</b>	<b>+E/-W (usft)</b>	<b>Direction (°)</b>
	0.0	0.0	0.0	1.85

<b>Plan Sections</b>										
Measured Depth (usft)	Inclination (°)	Azimuth (°)	Vertical Depth (usft)	+N/-S (usft)	+E/-W (usft)	Dogleg Rate (°/100usft)	Build Rate (°/100usft)	Turn Rate (°/100usft)	TFO (°)	Target
0.0	0.00	0.00	0.0	0.0	0.0	0.00	0.00	0.00	0.00	
7,219.5	0.00	0.00	7,219.5	0.0	0.0	0.00	0.00	0.00	0.00	
7,969.5	90.00	22.30	7,697.0	441.8	181.2	12.00	12.00	0.00	22.30	
8,712.7	90.00	0.00	7,697.0	1,166.4	324.0	3.00	0.00	-3.00	-90.00	Fox Creek 518-3422H
17,606.0	90.00	0.00	7,697.0	10,059.7	324.4	0.00	0.00	0.00	0.00	Fox Creek 518-3422H

# EOG Resources, Inc.

## Planning Report

<b>Database:</b>	EDM_DENVER	<b>Local Co-ordinate Reference:</b>	Well Fox Creek 518-3422H
<b>Company:</b>	Denver Division- Colorado	<b>TVD Reference:</b>	RKB @ 5461.0usft (KB GL+25')
<b>Project:</b>	DJ - Hereford Ranch	<b>MD Reference:</b>	RKB @ 5461.0usft (KB GL+25')
<b>Site:</b>	Fox Creek F34 NWNW Pad	<b>North Reference:</b>	True
<b>Well:</b>	Fox Creek 518-3422H	<b>Survey Calculation Method:</b>	Minimum Curvature
<b>Wellbore:</b>	OH		
<b>Design:</b>	APD Plan (Plat Cert 5/19/415)		

Planned Survey									
Measured Depth (usft)	Inclination (°)	Azimuth (°)	Vertical Depth (usft)	+N/-S (usft)	+E/-W (usft)	Vertical Section (usft)	Dogleg Rate (°/100usft)	Build Rate (°/100usft)	Turn Rate (°/100usft)
0.0	0.00	0.00	0.0	0.0	0.0	0.0	0.00	0.00	0.00
100.0	0.00	0.00	100.0	0.0	0.0	0.0	0.00	0.00	0.00
200.0	0.00	0.00	200.0	0.0	0.0	0.0	0.00	0.00	0.00
300.0	0.00	0.00	300.0	0.0	0.0	0.0	0.00	0.00	0.00
400.0	0.00	0.00	400.0	0.0	0.0	0.0	0.00	0.00	0.00
500.0	0.00	0.00	500.0	0.0	0.0	0.0	0.00	0.00	0.00
600.0	0.00	0.00	600.0	0.0	0.0	0.0	0.00	0.00	0.00
700.0	0.00	0.00	700.0	0.0	0.0	0.0	0.00	0.00	0.00
800.0	0.00	0.00	800.0	0.0	0.0	0.0	0.00	0.00	0.00
900.0	0.00	0.00	900.0	0.0	0.0	0.0	0.00	0.00	0.00
1,000.0	0.00	0.00	1,000.0	0.0	0.0	0.0	0.00	0.00	0.00
1,100.0	0.00	0.00	1,100.0	0.0	0.0	0.0	0.00	0.00	0.00
1,200.0	0.00	0.00	1,200.0	0.0	0.0	0.0	0.00	0.00	0.00
1,300.0	0.00	0.00	1,300.0	0.0	0.0	0.0	0.00	0.00	0.00
1,400.0	0.00	0.00	1,400.0	0.0	0.0	0.0	0.00	0.00	0.00
1,437.0	0.00	0.00	1,437.0	0.0	0.0	0.0	0.00	0.00	0.00
9 5/8" Surface									
1,500.0	0.00	0.00	1,500.0	0.0	0.0	0.0	0.00	0.00	0.00
1,600.0	0.00	0.00	1,600.0	0.0	0.0	0.0	0.00	0.00	0.00
1,700.0	0.00	0.00	1,700.0	0.0	0.0	0.0	0.00	0.00	0.00
1,800.0	0.00	0.00	1,800.0	0.0	0.0	0.0	0.00	0.00	0.00
1,900.0	0.00	0.00	1,900.0	0.0	0.0	0.0	0.00	0.00	0.00
2,000.0	0.00	0.00	2,000.0	0.0	0.0	0.0	0.00	0.00	0.00
2,100.0	0.00	0.00	2,100.0	0.0	0.0	0.0	0.00	0.00	0.00
2,200.0	0.00	0.00	2,200.0	0.0	0.0	0.0	0.00	0.00	0.00
2,300.0	0.00	0.00	2,300.0	0.0	0.0	0.0	0.00	0.00	0.00
2,400.0	0.00	0.00	2,400.0	0.0	0.0	0.0	0.00	0.00	0.00
2,500.0	0.00	0.00	2,500.0	0.0	0.0	0.0	0.00	0.00	0.00
2,600.0	0.00	0.00	2,600.0	0.0	0.0	0.0	0.00	0.00	0.00
2,700.0	0.00	0.00	2,700.0	0.0	0.0	0.0	0.00	0.00	0.00
2,800.0	0.00	0.00	2,800.0	0.0	0.0	0.0	0.00	0.00	0.00
2,900.0	0.00	0.00	2,900.0	0.0	0.0	0.0	0.00	0.00	0.00
3,000.0	0.00	0.00	3,000.0	0.0	0.0	0.0	0.00	0.00	0.00
3,100.0	0.00	0.00	3,100.0	0.0	0.0	0.0	0.00	0.00	0.00
3,200.0	0.00	0.00	3,200.0	0.0	0.0	0.0	0.00	0.00	0.00
3,300.0	0.00	0.00	3,300.0	0.0	0.0	0.0	0.00	0.00	0.00
3,400.0	0.00	0.00	3,400.0	0.0	0.0	0.0	0.00	0.00	0.00
3,500.0	0.00	0.00	3,500.0	0.0	0.0	0.0	0.00	0.00	0.00
3,600.0	0.00	0.00	3,600.0	0.0	0.0	0.0	0.00	0.00	0.00
3,700.0	0.00	0.00	3,700.0	0.0	0.0	0.0	0.00	0.00	0.00
3,800.0	0.00	0.00	3,800.0	0.0	0.0	0.0	0.00	0.00	0.00
3,900.0	0.00	0.00	3,900.0	0.0	0.0	0.0	0.00	0.00	0.00
4,000.0	0.00	0.00	4,000.0	0.0	0.0	0.0	0.00	0.00	0.00
4,100.0	0.00	0.00	4,100.0	0.0	0.0	0.0	0.00	0.00	0.00
4,200.0	0.00	0.00	4,200.0	0.0	0.0	0.0	0.00	0.00	0.00
4,300.0	0.00	0.00	4,300.0	0.0	0.0	0.0	0.00	0.00	0.00
4,400.0	0.00	0.00	4,400.0	0.0	0.0	0.0	0.00	0.00	0.00
4,500.0	0.00	0.00	4,500.0	0.0	0.0	0.0	0.00	0.00	0.00
4,600.0	0.00	0.00	4,600.0	0.0	0.0	0.0	0.00	0.00	0.00
4,700.0	0.00	0.00	4,700.0	0.0	0.0	0.0	0.00	0.00	0.00
4,800.0	0.00	0.00	4,800.0	0.0	0.0	0.0	0.00	0.00	0.00
4,900.0	0.00	0.00	4,900.0	0.0	0.0	0.0	0.00	0.00	0.00
5,000.0	0.00	0.00	5,000.0	0.0	0.0	0.0	0.00	0.00	0.00
5,100.0	0.00	0.00	5,100.0	0.0	0.0	0.0	0.00	0.00	0.00

# EOG Resources, Inc.

## Planning Report

<b>Database:</b>	EDM_DENVER	<b>Local Co-ordinate Reference:</b>	Well Fox Creek 518-3422H
<b>Company:</b>	Denver Division- Colorado	<b>TVD Reference:</b>	RKB @ 5461.0usft (KB GL+25')
<b>Project:</b>	DJ - Hereford Ranch	<b>MD Reference:</b>	RKB @ 5461.0usft (KB GL+25')
<b>Site:</b>	Fox Creek F34 NWNW Pad	<b>North Reference:</b>	True
<b>Well:</b>	Fox Creek 518-3422H	<b>Survey Calculation Method:</b>	Minimum Curvature
<b>Wellbore:</b>	OH		
<b>Design:</b>	APD Plan (Plat Cert 5/19/415)		

Planned Survey									
Measured Depth (usft)	Inclination (°)	Azimuth (°)	Vertical Depth (usft)	+N/-S (usft)	+E/-W (usft)	Vertical Section (usft)	Dogleg Rate (°/100usft)	Build Rate (°/100usft)	Turn Rate (°/100usft)
5,200.0	0.00	0.00	5,200.0	0.0	0.0	0.0	0.00	0.00	0.00
5,300.0	0.00	0.00	5,300.0	0.0	0.0	0.0	0.00	0.00	0.00
5,400.0	0.00	0.00	5,400.0	0.0	0.0	0.0	0.00	0.00	0.00
5,500.0	0.00	0.00	5,500.0	0.0	0.0	0.0	0.00	0.00	0.00
5,600.0	0.00	0.00	5,600.0	0.0	0.0	0.0	0.00	0.00	0.00
5,700.0	0.00	0.00	5,700.0	0.0	0.0	0.0	0.00	0.00	0.00
5,800.0	0.00	0.00	5,800.0	0.0	0.0	0.0	0.00	0.00	0.00
5,900.0	0.00	0.00	5,900.0	0.0	0.0	0.0	0.00	0.00	0.00
6,000.0	0.00	0.00	6,000.0	0.0	0.0	0.0	0.00	0.00	0.00
6,100.0	0.00	0.00	6,100.0	0.0	0.0	0.0	0.00	0.00	0.00
6,200.0	0.00	0.00	6,200.0	0.0	0.0	0.0	0.00	0.00	0.00
6,300.0	0.00	0.00	6,300.0	0.0	0.0	0.0	0.00	0.00	0.00
6,400.0	0.00	0.00	6,400.0	0.0	0.0	0.0	0.00	0.00	0.00
6,500.0	0.00	0.00	6,500.0	0.0	0.0	0.0	0.00	0.00	0.00
6,600.0	0.00	0.00	6,600.0	0.0	0.0	0.0	0.00	0.00	0.00
6,700.0	0.00	0.00	6,700.0	0.0	0.0	0.0	0.00	0.00	0.00
6,800.0	0.00	0.00	6,800.0	0.0	0.0	0.0	0.00	0.00	0.00
6,900.0	0.00	0.00	6,900.0	0.0	0.0	0.0	0.00	0.00	0.00
7,000.0	0.00	0.00	7,000.0	0.0	0.0	0.0	0.00	0.00	0.00
7,100.0	0.00	0.00	7,100.0	0.0	0.0	0.0	0.00	0.00	0.00
7,200.0	0.00	0.00	7,200.0	0.0	0.0	0.0	0.00	0.00	0.00
7,219.5	0.00	0.00	7,219.5	0.0	0.0	0.0	0.00	0.00	0.00
7,300.0	9.66	22.30	7,299.6	6.3	2.6	6.3	12.00	12.00	0.00
7,400.0	21.66	22.30	7,395.7	31.2	12.8	31.6	12.00	12.00	0.00
7,500.0	33.66	22.30	7,484.1	74.1	30.4	75.0	12.00	12.00	0.00
7,600.0	45.66	22.30	7,561.0	133.0	54.5	134.7	12.00	12.00	0.00
7,700.0	57.66	22.30	7,622.9	205.4	84.3	208.1	12.00	12.00	0.00
7,800.0	69.66	22.30	7,667.2	288.2	118.2	291.9	12.00	12.00	0.00
7,900.0	81.66	22.30	7,691.9	377.7	154.9	382.5	12.00	12.00	0.00
7,969.0	89.94	22.30	7,697.0	441.3	181.0	446.9	12.00	12.00	0.00
7" Intermediate (Opt 2)									
7,969.5	90.00	22.30	7,697.0	441.8	181.2	447.4	12.00	12.00	0.00
8,000.0	90.00	21.39	7,697.0	470.1	192.5	476.0	3.00	0.00	-3.00
8,100.0	90.00	18.39	7,697.0	564.1	226.5	571.1	3.00	0.00	-3.00
8,200.0	90.00	15.39	7,697.0	659.8	255.6	667.7	3.00	0.00	-3.00
8,300.0	90.00	12.39	7,697.0	756.8	279.6	765.5	3.00	0.00	-3.00
8,400.0	90.00	9.39	7,697.0	855.0	298.5	864.2	3.00	0.00	-3.00
8,500.0	90.00	6.39	7,697.0	954.1	312.2	963.6	3.00	0.00	-3.00
8,600.0	90.00	3.39	7,697.0	1,053.7	320.7	1,063.5	3.00	0.00	-3.00
8,700.0	90.00	0.39	7,697.0	1,153.6	324.0	1,163.5	3.00	0.00	-3.00
8,712.7	90.00	0.00	7,697.0	1,166.4	324.0	1,176.2	3.00	0.00	-3.00
8,800.0	90.00	0.00	7,697.0	1,253.6	324.0	1,263.4	0.00	0.00	0.00
8,900.0	90.00	0.00	7,697.0	1,353.6	324.0	1,363.4	0.00	0.00	0.00
9,000.0	90.00	0.00	7,697.0	1,453.6	324.0	1,463.3	0.00	0.00	0.00
9,100.0	90.00	0.00	7,697.0	1,553.6	324.0	1,563.3	0.00	0.00	0.00
9,200.0	90.00	0.00	7,697.0	1,653.6	324.0	1,663.2	0.00	0.00	0.00
9,300.0	90.00	0.00	7,697.0	1,753.6	324.0	1,763.2	0.00	0.00	0.00
9,400.0	90.00	0.00	7,697.0	1,853.6	324.0	1,863.1	0.00	0.00	0.00
9,500.0	90.00	0.00	7,697.0	1,953.6	324.1	1,963.1	0.00	0.00	0.00
9,600.0	90.00	0.00	7,697.0	2,053.6	324.1	2,063.0	0.00	0.00	0.00
9,700.0	90.00	0.00	7,697.0	2,153.6	324.1	2,163.0	0.00	0.00	0.00
9,800.0	90.00	0.00	7,697.0	2,253.6	324.1	2,262.9	0.00	0.00	0.00
9,900.0	90.00	0.00	7,697.0	2,353.6	324.1	2,362.9	0.00	0.00	0.00

# EOG Resources, Inc.

## Planning Report

<b>Database:</b>	EDM_DENVER	<b>Local Co-ordinate Reference:</b>	Well Fox Creek 518-3422H
<b>Company:</b>	Denver Division- Colorado	<b>TVD Reference:</b>	RKB @ 5461.0usft (KB GL+25')
<b>Project:</b>	DJ - Hereford Ranch	<b>MD Reference:</b>	RKB @ 5461.0usft (KB GL+25')
<b>Site:</b>	Fox Creek F34 NWNW Pad	<b>North Reference:</b>	True
<b>Well:</b>	Fox Creek 518-3422H	<b>Survey Calculation Method:</b>	Minimum Curvature
<b>Wellbore:</b>	OH		
<b>Design:</b>	APD Plan (Plat Cert 5/19/415)		

Planned Survey									
Measured Depth (usft)	Inclination (°)	Azimuth (°)	Vertical Depth (usft)	+N/-S (usft)	+E/-W (usft)	Vertical Section (usft)	Dogleg Rate (°/100usft)	Build Rate (°/100usft)	Turn Rate (°/100usft)
10,000.0	90.00	0.00	7,697.0	2,453.6	324.1	2,462.8	0.00	0.00	0.00
10,100.0	90.00	0.00	7,697.0	2,553.6	324.1	2,562.7	0.00	0.00	0.00
10,200.0	90.00	0.00	7,697.0	2,653.6	324.1	2,662.7	0.00	0.00	0.00
10,300.0	90.00	0.00	7,697.0	2,753.6	324.1	2,762.6	0.00	0.00	0.00
10,400.0	90.00	0.00	7,697.0	2,853.6	324.1	2,862.6	0.00	0.00	0.00
10,500.0	90.00	0.00	7,697.0	2,953.6	324.1	2,962.5	0.00	0.00	0.00
10,600.0	90.00	0.00	7,697.0	3,053.6	324.1	3,062.5	0.00	0.00	0.00
10,700.0	90.00	0.00	7,697.0	3,153.6	324.1	3,162.4	0.00	0.00	0.00
10,800.0	90.00	0.00	7,697.0	3,253.6	324.1	3,262.4	0.00	0.00	0.00
10,900.0	90.00	0.00	7,697.0	3,353.6	324.1	3,362.3	0.00	0.00	0.00
11,000.0	90.00	0.00	7,697.0	3,453.6	324.1	3,462.3	0.00	0.00	0.00
11,100.0	90.00	0.00	7,697.0	3,553.6	324.1	3,562.2	0.00	0.00	0.00
11,200.0	90.00	0.00	7,697.0	3,653.6	324.1	3,662.2	0.00	0.00	0.00
11,300.0	90.00	0.00	7,697.0	3,753.6	324.1	3,762.1	0.00	0.00	0.00
11,400.0	90.00	0.00	7,697.0	3,853.6	324.1	3,862.1	0.00	0.00	0.00
11,500.0	90.00	0.00	7,697.0	3,953.6	324.1	3,962.0	0.00	0.00	0.00
11,600.0	90.00	0.00	7,697.0	4,053.6	324.1	4,062.0	0.00	0.00	0.00
11,700.0	90.00	0.00	7,697.0	4,153.6	324.1	4,161.9	0.00	0.00	0.00
11,800.0	90.00	0.00	7,697.0	4,253.6	324.2	4,261.9	0.00	0.00	0.00
11,900.0	90.00	0.00	7,697.0	4,353.6	324.2	4,361.8	0.00	0.00	0.00
12,000.0	90.00	0.00	7,697.0	4,453.6	324.2	4,461.8	0.00	0.00	0.00
12,100.0	90.00	0.00	7,697.0	4,553.6	324.2	4,561.7	0.00	0.00	0.00
12,200.0	90.00	0.00	7,697.0	4,653.6	324.2	4,661.7	0.00	0.00	0.00
12,300.0	90.00	0.00	7,697.0	4,753.6	324.2	4,761.6	0.00	0.00	0.00
12,400.0	90.00	0.00	7,697.0	4,853.6	324.2	4,861.6	0.00	0.00	0.00
12,500.0	90.00	0.00	7,697.0	4,953.6	324.2	4,961.5	0.00	0.00	0.00
12,600.0	90.00	0.00	7,697.0	5,053.6	324.2	5,061.5	0.00	0.00	0.00
12,700.0	90.00	0.00	7,697.0	5,153.6	324.2	5,161.4	0.00	0.00	0.00
12,800.0	90.00	0.00	7,697.0	5,253.6	324.2	5,261.3	0.00	0.00	0.00
12,900.0	90.00	0.00	7,697.0	5,353.6	324.2	5,361.3	0.00	0.00	0.00
13,000.0	90.00	0.00	7,697.0	5,453.6	324.2	5,461.2	0.00	0.00	0.00
13,100.0	90.00	0.00	7,697.0	5,553.6	324.2	5,561.2	0.00	0.00	0.00
13,200.0	90.00	0.00	7,697.0	5,653.6	324.2	5,661.1	0.00	0.00	0.00
13,300.0	90.00	0.00	7,697.0	5,753.6	324.2	5,761.1	0.00	0.00	0.00
13,400.0	90.00	0.00	7,697.0	5,853.6	324.2	5,861.0	0.00	0.00	0.00
13,500.0	90.00	0.00	7,697.0	5,953.6	324.2	5,961.0	0.00	0.00	0.00
13,600.0	90.00	0.00	7,697.0	6,053.6	324.2	6,060.9	0.00	0.00	0.00
13,700.0	90.00	0.00	7,697.0	6,153.6	324.2	6,160.9	0.00	0.00	0.00
13,800.0	90.00	0.00	7,697.0	6,253.6	324.2	6,260.8	0.00	0.00	0.00
13,900.0	90.00	0.00	7,697.0	6,353.6	324.2	6,360.8	0.00	0.00	0.00
14,000.0	90.00	0.00	7,697.0	6,453.6	324.2	6,460.7	0.00	0.00	0.00
14,100.0	90.00	0.00	7,697.0	6,553.6	324.3	6,560.7	0.00	0.00	0.00
14,200.0	90.00	0.00	7,697.0	6,653.6	324.3	6,660.6	0.00	0.00	0.00
14,300.0	90.00	0.00	7,697.0	6,753.6	324.3	6,760.6	0.00	0.00	0.00
14,400.0	90.00	0.00	7,697.0	6,853.6	324.3	6,860.5	0.00	0.00	0.00
14,500.0	90.00	0.00	7,697.0	6,953.6	324.3	6,960.5	0.00	0.00	0.00
14,600.0	90.00	0.00	7,697.0	7,053.6	324.3	7,060.4	0.00	0.00	0.00
14,700.0	90.00	0.00	7,697.0	7,153.6	324.3	7,160.4	0.00	0.00	0.00
14,800.0	90.00	0.00	7,697.0	7,253.6	324.3	7,260.3	0.00	0.00	0.00
14,900.0	90.00	0.00	7,697.0	7,353.6	324.3	7,360.3	0.00	0.00	0.00
15,000.0	90.00	0.00	7,697.0	7,453.6	324.3	7,460.2	0.00	0.00	0.00
15,100.0	90.00	0.00	7,697.0	7,553.6	324.3	7,560.2	0.00	0.00	0.00
15,200.0	90.00	0.00	7,697.0	7,653.6	324.3	7,660.1	0.00	0.00	0.00
15,300.0	90.00	0.00	7,697.0	7,753.6	324.3	7,760.1	0.00	0.00	0.00

# EOG Resources, Inc.

## Planning Report

<b>Database:</b>	EDM_DENVER	<b>Local Co-ordinate Reference:</b>	Well Fox Creek 518-3422H
<b>Company:</b>	Denver Division- Colorado	<b>TVD Reference:</b>	RKB @ 5461.0usft (KB GL+25')
<b>Project:</b>	DJ - Hereford Ranch	<b>MD Reference:</b>	RKB @ 5461.0usft (KB GL+25')
<b>Site:</b>	Fox Creek F34 NWNW Pad	<b>North Reference:</b>	True
<b>Well:</b>	Fox Creek 518-3422H	<b>Survey Calculation Method:</b>	Minimum Curvature
<b>Wellbore:</b>	OH		
<b>Design:</b>	APD Plan (Plat Cert 5/19/415)		

Planned Survey										
Measured Depth (usft)	Inclination (°)	Azimuth (°)	Vertical Depth (usft)	+N/-S (usft)	+E/-W (usft)	Vertical Section (usft)	Dogleg Rate (°/100usft)	Build Rate (°/100usft)	Turn Rate (°/100usft)	
15,400.0	90.00	0.00	7,697.0	7,853.6	324.3	7,860.0	0.00	0.00	0.00	
15,500.0	90.00	0.00	7,697.0	7,953.6	324.3	7,960.0	0.00	0.00	0.00	
15,600.0	90.00	0.00	7,697.0	8,053.6	324.3	8,059.9	0.00	0.00	0.00	
15,700.0	90.00	0.00	7,697.0	8,153.6	324.3	8,159.8	0.00	0.00	0.00	
15,800.0	90.00	0.00	7,697.0	8,253.6	324.3	8,259.8	0.00	0.00	0.00	
15,900.0	90.00	0.00	7,697.0	8,353.6	324.3	8,359.7	0.00	0.00	0.00	
16,000.0	90.00	0.00	7,697.0	8,453.6	324.3	8,459.7	0.00	0.00	0.00	
16,100.0	90.00	0.00	7,697.0	8,553.6	324.3	8,559.6	0.00	0.00	0.00	
16,200.0	90.00	0.00	7,697.0	8,653.6	324.3	8,659.6	0.00	0.00	0.00	
16,300.0	90.00	0.00	7,697.0	8,753.6	324.3	8,759.5	0.00	0.00	0.00	
16,400.0	90.00	0.00	7,697.0	8,853.6	324.4	8,859.5	0.00	0.00	0.00	
16,500.0	90.00	0.00	7,697.0	8,953.6	324.4	8,959.4	0.00	0.00	0.00	
16,600.0	90.00	0.00	7,697.0	9,053.6	324.4	9,059.4	0.00	0.00	0.00	
16,700.0	90.00	0.00	7,697.0	9,153.6	324.4	9,159.3	0.00	0.00	0.00	
16,800.0	90.00	0.00	7,697.0	9,253.6	324.4	9,259.3	0.00	0.00	0.00	
16,900.0	90.00	0.00	7,697.0	9,353.6	324.4	9,359.2	0.00	0.00	0.00	
17,000.0	90.00	0.00	7,697.0	9,453.6	324.4	9,459.2	0.00	0.00	0.00	
17,100.0	90.00	0.00	7,697.0	9,553.6	324.4	9,559.1	0.00	0.00	0.00	
17,200.0	90.00	0.00	7,697.0	9,653.6	324.4	9,659.1	0.00	0.00	0.00	
17,300.0	90.00	0.00	7,697.0	9,753.6	324.4	9,759.0	0.00	0.00	0.00	
17,400.0	90.00	0.00	7,697.0	9,853.6	324.4	9,859.0	0.00	0.00	0.00	
17,500.0	90.00	0.00	7,697.0	9,953.6	324.4	9,958.9	0.00	0.00	0.00	
17,600.0	90.00	0.00	7,697.0	10,053.6	324.4	10,058.9	0.00	0.00	0.00	
17,606.0	90.00	0.00	7,697.0	10,059.6	324.4	10,064.9	0.00	0.00	0.00	
5 1/2" Prod (Opt 1) - 4 1/2" Liner (Opt 2)										

Design Targets										
Target Name	Dip Angle (°)	Dip Dir. (°)	TVD (usft)	+N/-S (usft)	+E/-W (usft)	Northing (usft)	Easting (usft)	Latitude	Longitude	
- hit/miss target										
- Shape										
Fox Creek 518-3422H P	0.00	0.00	7,697.0	10,059.7	324.4	608,992.08	2,297,414.33	41° 0' 0.385 N	104° 25' 21.321 W	
- plan hits target center										
- Point										

Casing Points						
Measured Depth (usft)	Vertical Depth (usft)	Name	Casing Diameter (")	Hole Diameter (")		
1,437.0	1,437.0	9 5/8" Surface	9-5/8	13-1/2		
7,969.0	7,697.0	7" Intermediate (Opt 2)	7	8-3/4		
17,606.0	7,697.0	5 1/2" Prod (Opt 1)	5-1/2	7-7/8		
17,606.0	7,697.0	4 1/2" Liner (Opt 2)	4-1/2	6-1/8		