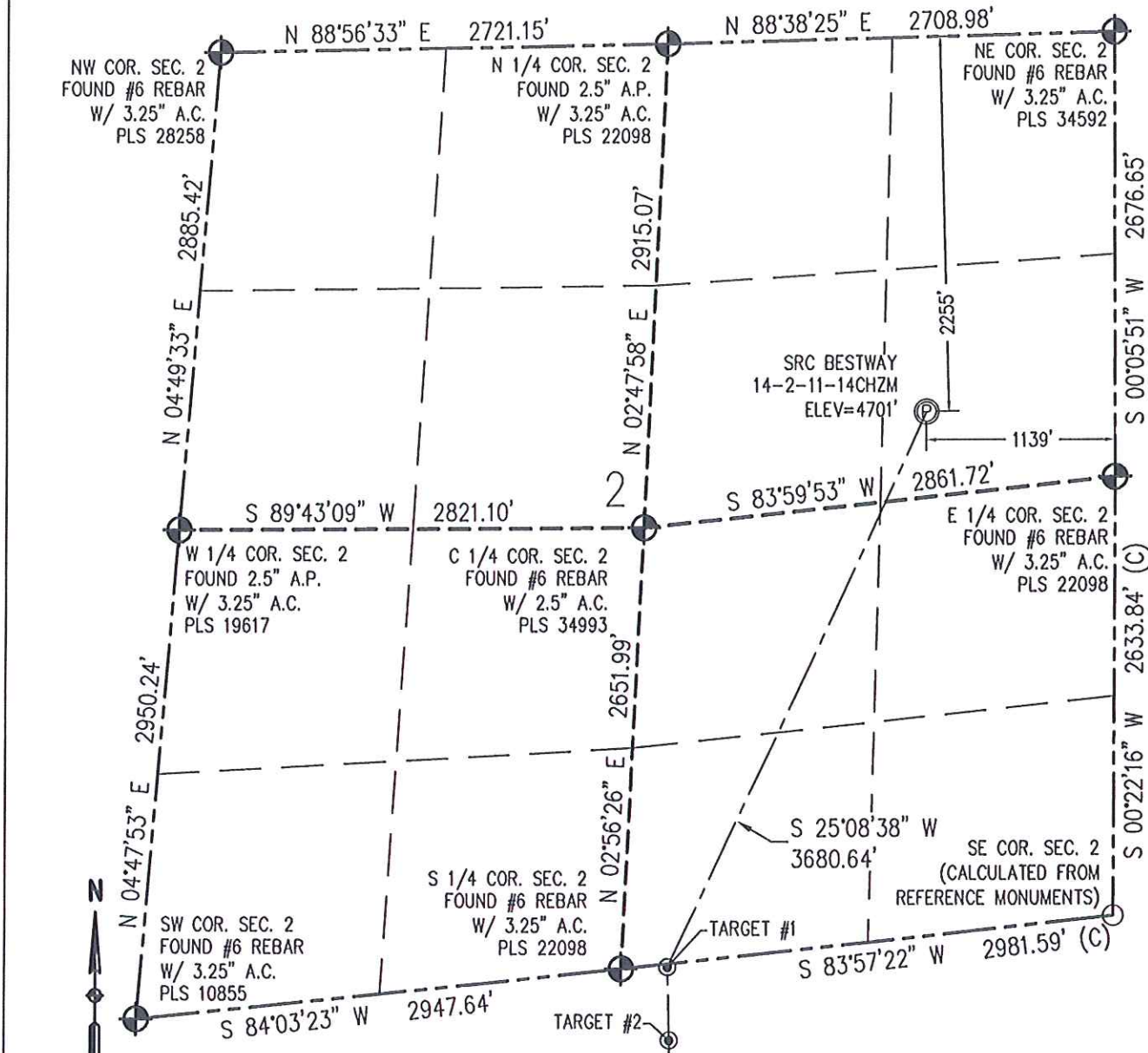


# WELL LOCATION CERTIFICATE

THIS MAP DOES NOT REPRESENT A BOUNDARY SURVEY

SECTION 2  
TOWNSHIP 5 NORTH  
RANGE 66 WEST



Scale 1" = 1000 ft

## NOTES:

- 1) Bearings shown are grid bearings of the Colorado State Plane Coordinate System, North Zone, North American Datum 1983/2007. The lineal dimensions as contained herein are based upon the "U.S. Survey Foot."
- 2) Ground elevations are based on unobserved GPS elevation (NAVD 88 DATUM).
- 3) IMPROVEMENTS: See LOCATION DRAWING for all visible improvements within 500' of disturbed area.
- 4) SURFACE USE: NATURAL GROUND.
- 5) OPERATOR NAME: BRETT BIRCH.
- 6) THE NEAREST EXISTING WELL IS: 2-6-1 FRANKLIN PARK 51' NW.
- 7) NEAREST CULTURAL ITEMS:  
BUILDING: 648' SE  
BUILDING UNIT: 567' S  
HIGH OCCUPANCY BUILDING UNIT: 1256' E  
DESIGNATED OUTSIDE ACTIVITY AREA: 5280'+  
PUBLIC ROAD: 4TH STREET 480' S  
ABOVE GROUND UTILITY: 462' S  
RAILROAD: 4020' NE  
PROPERTY LINE: 205' E

IN ACCORDANCE WITH A REQUEST FROM CRAIG RASMUSON - SYNERGY RESOURCES, BASELINE ENGINEERING CORP. HAS DETERMINED THE LOCATION OF THE SRC BESTWAY 14-2-11-14CHZM TO BE 2255' FNL AND 1139' FEL, AS MEASURED AT NINETY (90) DEGREES FROM THE SECTION LINE OF SECTION 2, TOWNSHIP 5 NORTH, RANGE 66 WEST AND THE BOTTOM HOLE LOCATION TO BE 2144' FNL AND 2661' FEL OF SECTION 14, TOWNSHIP 5 NORTH, RANGE 66 WEST, 6TH PRINCIPAL MERIDIAN, WELD COUNTY, COLORADO.

I HEREBY CERTIFY THAT THIS WELL LOCATION CERTIFICATE WAS PREPARED BY ME, OR UNDER MY DIRECT SUPERVISION, THAT THE FIELD WORK WAS COMPLETED ON 3/25/2015, THAT IT IS NOT A LAND SURVEY PLAT OR AN IMPROVEMENT SURVEY PLAT, AND THAT IT IS NOT TO BE RELIED UPON FOR ESTABLISHMENT OF FENCE, BUILDING, OR OTHER FUTURE IMPROVEMENT LINES.

SURFACE HOLE:  
LATITUDE: 40.431196° N  
LONGITUDE: 104.739121° W  
PDOP: 1.5  
1/4, 1/4: SE1/4NE1/4  
NEAREST PROPERTY LINE: 205' E

BOTTOM HOLE:  
LATITUDE: 40.400776° N  
LONGITUDE: 104.744532° W

## LEGEND

- - FOUND/SET SURVEY MONUMENT PER MONUMENT RECORD EXCEPTIONS NOTED.
- - CALCULATED SURVEY MONUMENT POSITION
- (C) - CALCULATED DIMENSION

TARGET #1:  
LATITUDE: 40.422090° N  
LONGITUDE: 104.744839° W  
TARGET #2:  
LATITUDE: 40.420878° N  
LONGITUDE: 104.744817° W

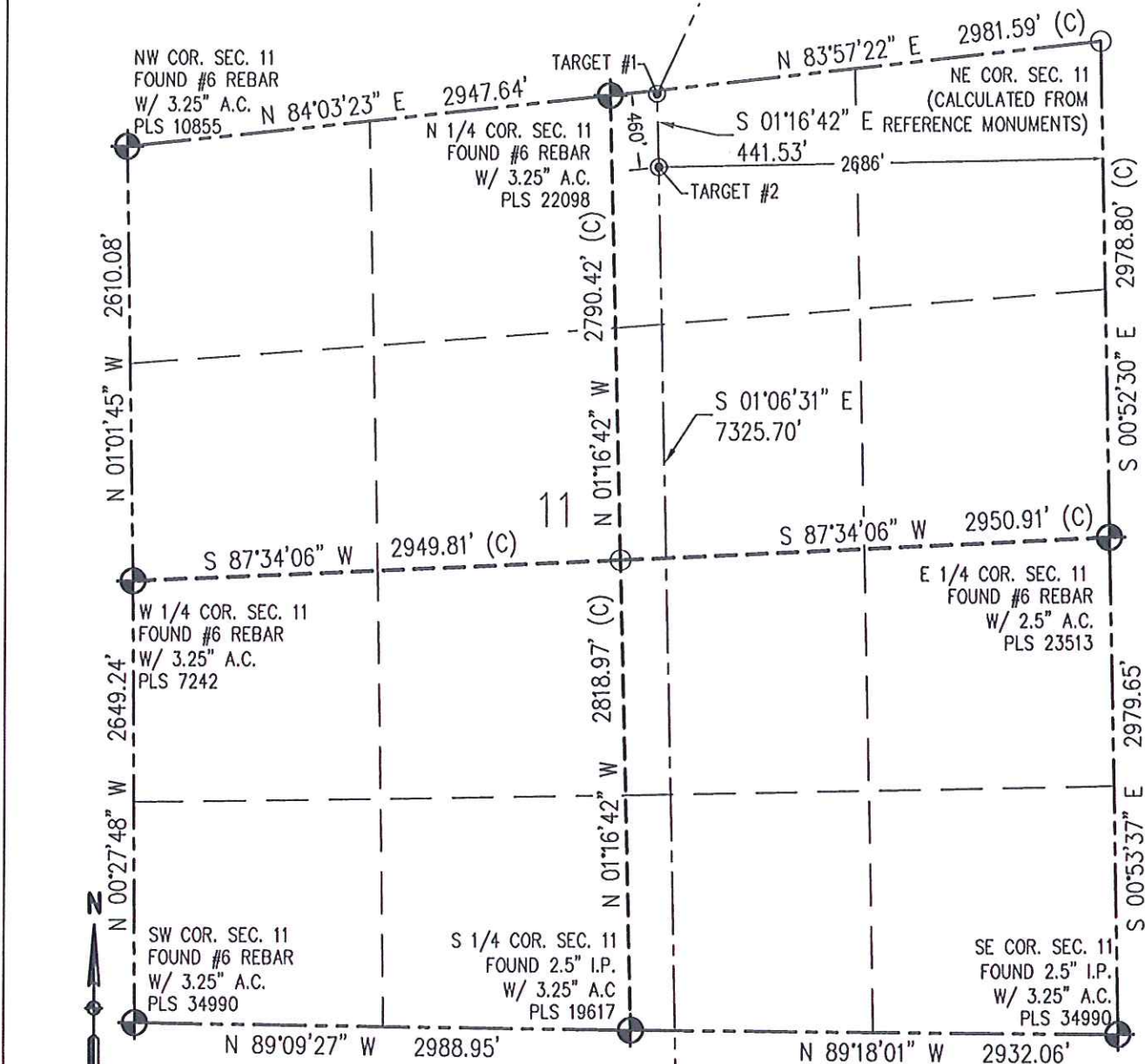
AARON A. DEMO  
Professional Land Surveyor Registration No. 38285  
State of Colorado  
FOR AND ON BEHALF OF BASELINE ENGINEERING CORP.

PROJECT #: SYN05N66W02-01



**WELL LOCATION CERTIFICATE**

THIS MAP DOES NOT REPRESENT A BOUNDARY SURVEY

SECTION 11  
TOWNSHIP 5 NORTH  
RANGE 66 WEST

0 1000  
Scale 1" = 1000 ft

## NOTES:

- 1) Bearings shown are grid bearings of the Colorado State Plane Coordinate System, North Zone, North American Datum 1983/2007. The lineal dimensions as contained herein are based upon the "U.S. Survey Foot."
- 2) Ground elevations are based on unobserved GPS elevation (NAVD 88 DATUM).
- 3) IMPROVEMENTS: See LOCATION DRAWING for all visible improvements within 500' of disturbed area.
- 4) SURFACE USE: NATURAL GROUND.
- 5) OPERATOR NAME: BRETT BIRCH.
- 6) THE NEAREST EXISTING WELL IS: 2-6-1 FRANKLIN PARK 51' NW.
- 7) NEAREST CULTURAL ITEMS:  
BUILDING: 648' SE  
BUILDING UNIT: 567' S  
HIGH OCCUPANCY BUILDING UNIT: 1256' E  
DESIGNATED OUTSIDE ACTIVITY AREA: 5280'+  
PUBLIC ROAD: 4TH STREET 480' S  
ABOVE GROUND UTILITY: 480' S  
RAILROAD: RAILROAD: 4020' NE  
PROPERTY LINE: 205' E

IN ACCORDANCE WITH A REQUEST FROM CRAIG RASMUSON - SYNERGY RESOURCES, BASELINE ENGINEERING CORP. HAS DETERMINED THE LOCATION OF THE SRC BESTWAY 14-2-11-14CHZM TO BE 2255' FNL AND 1139' FEL, AS MEASURED AT NINETY (90) DEGREES FROM THE SECTION LINE OF SECTION 2, TOWNSHIP 5 NORTH, RANGE 66 WEST AND THE BOTTOM HOLE LOCATION TO BE 2144' FNL AND 2661' FEL OF SECTION 14, TOWNSHIP 5 NORTH, RANGE 66 WEST, 6TH PRINCIPAL MERIDIAN, WELD COUNTY, COLORADO.

I HEREBY CERTIFY THAT THIS WELL LOCATION CERTIFICATE WAS PREPARED BY ME, OR UNDER MY DIRECT SUPERVISION, THAT THE FIELD WORK WAS COMPLETED ON 3/25/2015, THAT IT IS NOT A LAND SURVEY PLAT OR AN IMPROVEMENT SURVEY PLAT, AND THAT IT IS NOT TO BE RELIED UPON FOR ESTABLISHMENT OF FENCE, BUILDING, OR OTHER FUTURE IMPROVEMENT LINES.

**SURFACE HOLE:**  
LATITUDE: 40.431196° N  
LONGITUDE: 104.739121° W  
PDOP: 1.5  
1/4, 1/4: SE1/4NE1/4  
NEAREST PROPERTY LINE: 205' E

**BOTTOM HOLE:**  
LATITUDE: 40.400776° N  
LONGITUDE: 104.744532° W

**TARGET #1:**  
LATITUDE: 40.422090° N  
LONGITUDE: 104.744839° W  
**TARGET #2:**  
LATITUDE: 40.420878° N  
LONGITUDE: 104.744817° W

**LEGEND**

- ⊕ - FOUND/SET SURVEY MONUMENT PER MONUMENT RECORD EXCEPTIONS NOTED.
- - CALCULATED SURVEY MONUMENT POSITION
- (C) - CALCULATED DIMENSION

AARON A. DEMO  
Professional Land Surveyor Registration No. 38285  
State of Colorado  
FOR AND ON BEHALF OF BASELINE ENGINEERING CORP.

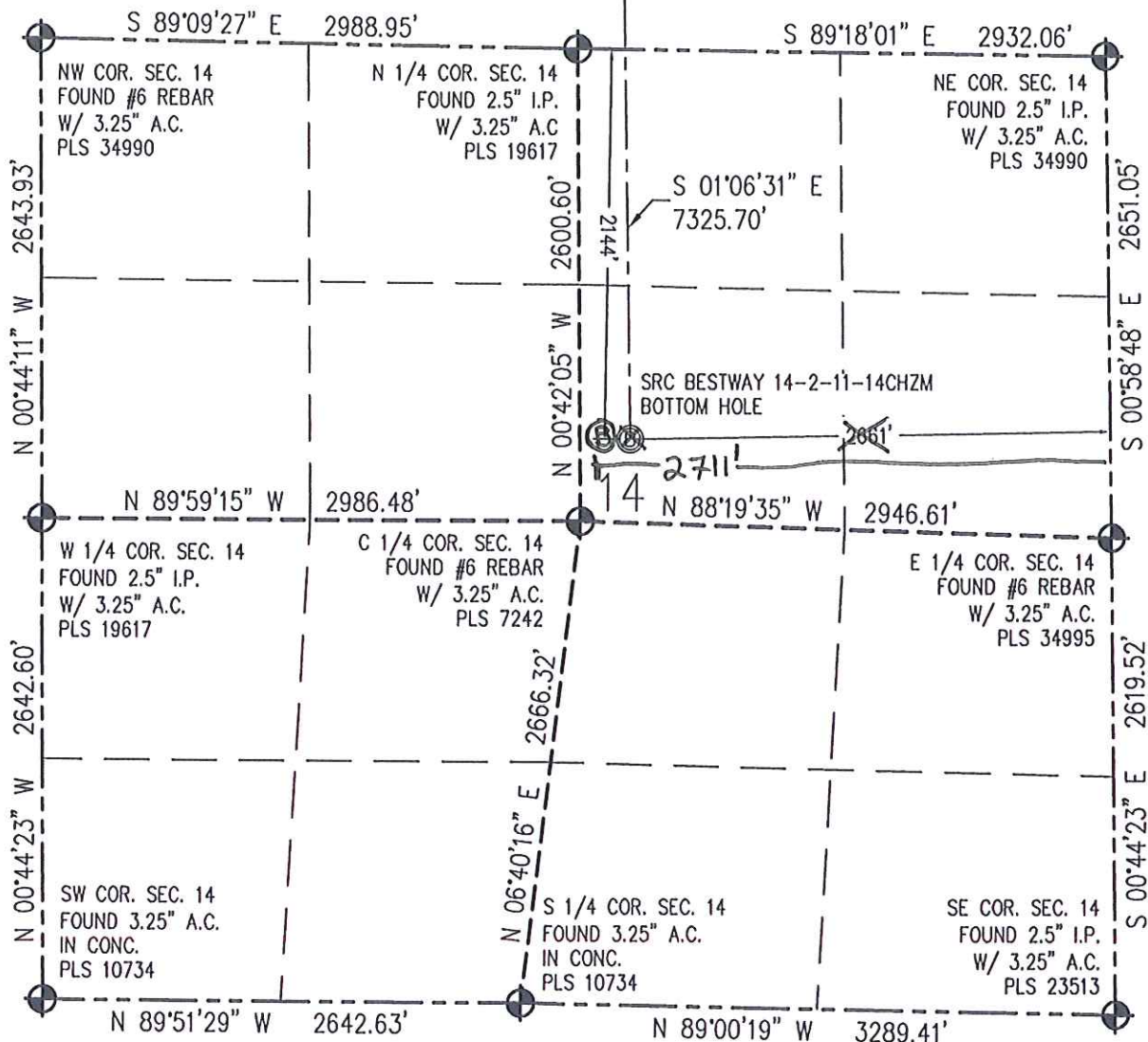
PROJECT #: SYN05N66W02-01

Completed  
4/27/2015



## WELL LOCATION CERTIFICATE

THIS MAP DOES NOT REPRESENT A BOUNDARY SURVEY

SECTION 14  
TOWNSHIP 5 NORTH  
RANGE 66 WEST

Scale 1" = 1000 ft

## NOTES:

- 1) Bearings shown are grid bearings of the Colorado State Plane Coordinate System, North Zone, North American Datum 1983/2007. The lineal dimensions as contained herein are based upon the "U.S. Survey Foot."
- 2) Ground elevations are based on unobserved GPS elevation (NAVD 88 DATUM).
- 3) IMPROVEMENTS: See LOCATION DRAWING for all visible improvements within 500' of disturbed area.
- 4) SURFACE USE: NATURAL GROUND.
- 5) OPERATOR NAME: BRETT BIRCH.
- 6) THE NEAREST EXISTING WELL IS: 2-6-1 FRANKLIN PARK 51' NW.
- 7) NEAREST CULTURAL ITEMS:  
BUILDING: 648' SE  
BUILDING UNIT: 567' S  
HIGH OCCUPANCY BUILDING UNIT: 1256' E  
DESIGNATED OUTSIDE ACTIVITY AREA: 5280'+  
PUBLIC ROAD: 4TH STREET 480' S  
ABOVE GROUND UTILITY: 462' S  
RAILROAD: RAILROAD: 4020' NE  
PROPERTY LINE: 205' E

IN ACCORDANCE WITH A REQUEST FROM CRAIG RASMUSON - SYNERGY RESOURCES, BASELINE ENGINEERING CORP. HAS DETERMINED THE LOCATION OF THE SRC BESTWAY 14-2-11-14CH2M TO BE 2255' FNL AND 1139' FEL, AS MEASURED AT NINETY (90) DEGREES FROM THE SECTION LINE OF SECTION 2, TOWNSHIP 5 NORTH, RANGE 66 WEST AND THE BOTTOM HOLE LOCATION TO BE 2144' FNL AND 2661' FEL OF SECTION 14, TOWNSHIP 5 NORTH, RANGE 66 WEST, 6TH PRINCIPAL MERIDIAN, WELD COUNTY, COLORADO.

I HEREBY CERTIFY THAT THIS WELL LOCATION CERTIFICATE WAS PREPARED BY ME, OR UNDER MY DIRECT SUPERVISION, THAT THE FIELD WORK WAS COMPLETED ON 3/25/2015, THAT IT IS NOT A LAND SURVEY PLAT OR AN IMPROVEMENT SURVEY PLAT, AND THAT IT IS NOT TO BE RELIED UPON FOR ESTABLISHMENT OF FENCE, BUILDING, OR OTHER FUTURE IMPROVEMENT LINES.

SURFACE HOLE:  
LATITUDE: 40.431196° N  
LONGITUDE: 104.739121° W  
PDOP: 1.5  
1/4, 1/4: SE1/4NE1/4  
NEAREST PROPERTY LINE: 205' E  
BOTTOM HOLE:  
LATITUDE: 40.400776° N  
LONGITUDE: 104.744532° W

TARGET #1:  
LATITUDE: 40.422090° N  
LONGITUDE: 104.744839° W  
TARGET #2:  
LATITUDE: 40.420878° N  
LONGITUDE: 104.744817° W

## LEGEND

- - FOUND/SET SURVEY MONUMENT PER MONUMENT RECORD EXCEPTIONS NOTED.
- - CALCULATED SURVEY MONUMENT POSITION
- (C) - CALCULATED DIMENSION



AARON A. DEMO  
Professional Land Surveyor Registration No. 38285  
State of Colorado  
FOR AND ON BEHALF OF BASELINE ENGINEERING CORP.

Completed  
4/27/2015

PROJECT #: SYN05N66W02-01