

# Bayswater Exploration & Production, LLC

Well Name: **Matrix P-29HC**

Surface Location: Matrix 29- Pad Sec.29-T6N-R65W

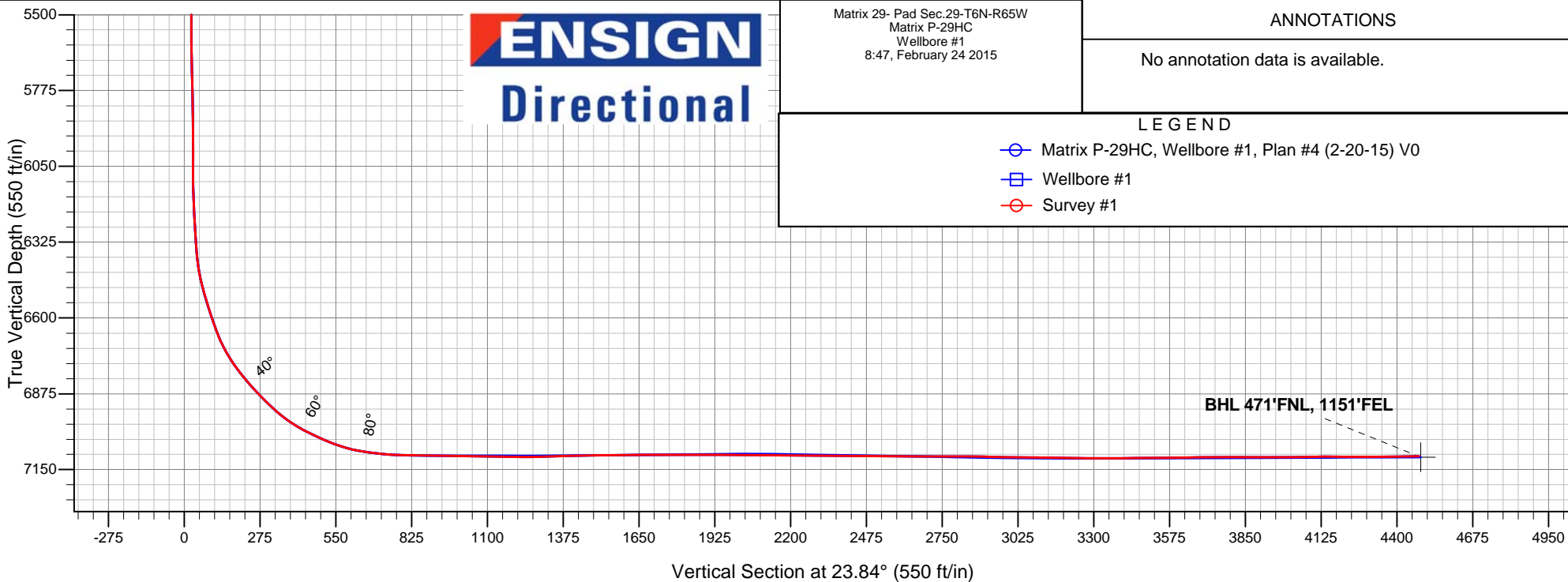
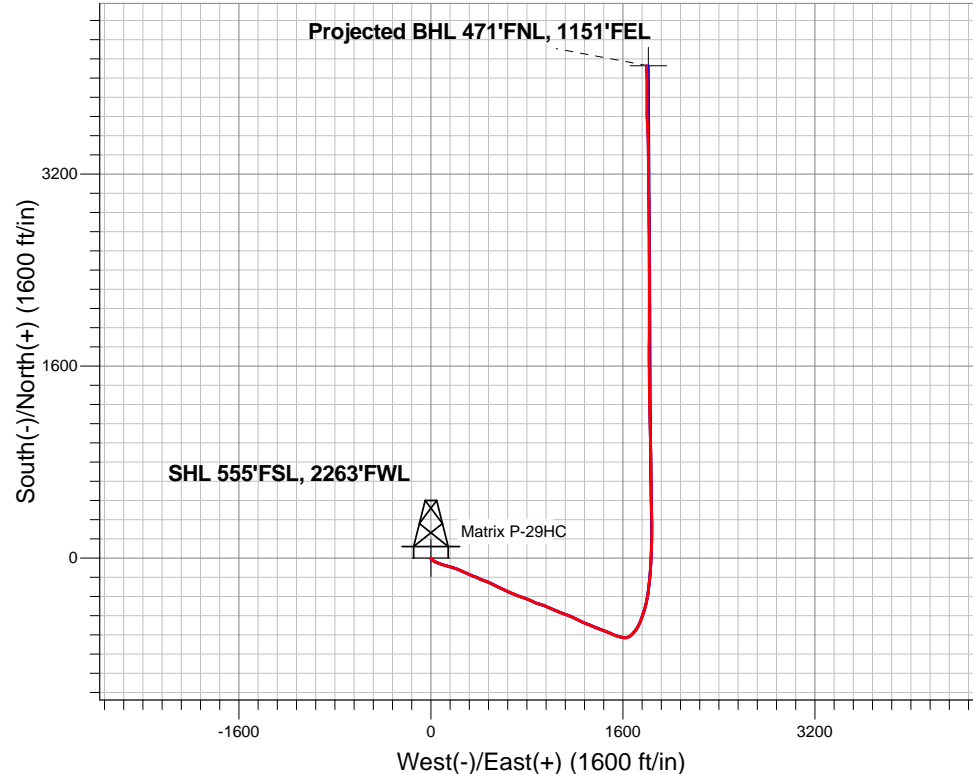
North American Datum 1983 , US State Plane 1983 , Colorado Northern Zone

Ground Elevation: 4707.0

+N/-S	+E/-W	Northing	Easting	Latitude	Longitude	Slot
0.0	0.0	1408887.51	3225807.50	40.452962	-104.688586	
RKB - 22.5' WELL @ 4729.5ft (RKB - 22.5')						

## FINAL SURVEY

**Projected Bottom Hole Location**  
**11863'MD 7101'TVD 4103'N & 1799'E of SHL**  
**91.01 degree Incl @ 358.66 degree AZM**





# **Bayswater Exploration & Production, LLC**

**SEC.29-T6N-R65W**

**Matrix 29- Pad Sec.29-T6N-R65W**

**Matrix P-29HC**

**Wellbore #1**

**Survey: Survey #1**

## **Standard Survey Report**

**24 February, 2015**



**BAYSWATER**  
**EXPLORATION & PRODUCTION, LLC**

<b>Company:</b>	Bayswater Exploration & Production, LLC	<b>Local Co-ordinate Reference:</b>	Well Matrix P-29HC
<b>Project:</b>	SEC.29-T6N-R65W	<b>TVD Reference:</b>	WELL @ 4729.5ft (RKB - 22.5')
<b>Site:</b>	Matrix 29- Pad Sec.29-T6N-R65W	<b>MD Reference:</b>	WELL @ 4729.5ft (RKB - 22.5')
<b>Well:</b>	Matrix P-29HC	<b>North Reference:</b>	True
<b>Wellbore:</b>	Wellbore #1	<b>Survey Calculation Method:</b>	Minimum Curvature
<b>Design:</b>	Wellbore #1	<b>Database:</b>	Landmark

<b>Project</b>	SEC.29-T6N-R65W		
<b>Map System:</b>	US State Plane 1983	<b>System Datum:</b>	Mean Sea Level
<b>Geo Datum:</b>	North American Datum 1983		Using Well Reference Point
<b>Map Zone:</b>	Colorado Northern Zone		Using geodetic scale factor

<b>Site</b>	Matrix 29- Pad Sec.29-T6N-R65W		
<b>Site Position:</b>		<b>Northing:</b>	1,408,840.92 ft
<b>From:</b>	Lat/Long	<b>Easting:</b>	3,225,730.56 ft
<b>Position Uncertainty:</b>	0.0 ft	<b>Slot Radius:</b>	"
		<b>Latitude:</b>	40.452836
		<b>Longitude:</b>	-104.688864
		<b>Grid Convergence:</b>	0.52 °

<b>Well</b>	Matrix P-29HC		
<b>Well Position</b>	<b>+N/-S</b>	0.0 ft	<b>Northing:</b>
	<b>+E/-W</b>	0.0 ft	<b>Easting:</b>
<b>Position Uncertainty</b>	0.0 ft	<b>Wellhead Elevation:</b>	ft
		<b>Latitude:</b>	40.452962
		<b>Longitude:</b>	-104.688586
		<b>Ground Level:</b>	4,707.0 ft

<b>Wellbore</b>	Wellbore #1		
<b>Magnetics</b>	<b>Model Name</b>	<b>Sample Date</b>	<b>Declination (°)</b>
	User Defined	2/20/2015	8.34
			<b>Dip Angle (°)</b>
			66.98
			<b>Field Strength (nT)</b>
			52,787

<b>Design</b>	Wellbore #1		
<b>Audit Notes:</b>			
<b>Version:</b>	1.0	<b>Phase:</b>	ACTUAL
		<b>Tie On Depth:</b>	0.0
<b>Vertical Section:</b>	<b>Depth From (TVD) (ft)</b>	<b>+N/-S (ft)</b>	<b>+E/-W (ft)</b>
	0.0	0.0	0.0
			<b>Direction (°)</b>
			23.84

<b>Survey Program</b>	<b>Date</b> 2/24/2015		
<b>From (ft)</b>	<b>To (ft)</b>	<b>Survey (Wellbore)</b>	<b>Tool Name</b>
161.0	11,863.0	Survey #1 (Wellbore #1)	MWD
			<b>Description</b>
			MWD - Standard

<b>Survey</b>									
<b>Measured Depth (ft)</b>	<b>Inclination (°)</b>	<b>Azimuth (°)</b>	<b>Vertical Depth (ft)</b>	<b>+N/-S (ft)</b>	<b>+E/-W (ft)</b>	<b>Vertical Section (ft)</b>	<b>Dogleg Rate (°/100ft)</b>	<b>Build Rate (°/100ft)</b>	<b>Turn Rate (°/100ft)</b>
0.0	0.00	0.00	0.0	0.0	0.0	0.0	0.00	0.00	0.00
1.0	0.00	147.20	1.0	0.0	0.0	0.0	0.25	0.25	0.00
<b>SHL 555'FSL, 2263'FWL</b>									
161.0	0.40	147.20	161.0	-0.5	0.3	-0.3	0.25	0.25	0.00
253.0	0.50	155.80	253.0	-1.1	0.6	-0.8	0.13	0.11	9.35
345.0	0.60	171.60	345.0	-2.0	0.9	-1.4	0.20	0.11	17.17
437.0	0.80	167.20	437.0	-3.1	1.1	-2.4	0.22	0.22	-4.78
529.0	1.50	161.10	529.0	-4.8	1.6	-3.8	0.77	0.76	-6.63
621.0	2.80	139.30	620.9	-7.7	3.5	-5.6	1.65	1.41	-23.70
705.0	4.50	130.90	704.7	-11.4	7.3	-7.5	2.12	2.02	-10.00
831.0	8.20	124.00	829.9	-19.6	18.5	-10.5	2.99	2.94	-5.48
926.0	9.80	121.40	923.8	-27.6	31.0	-12.7	1.74	1.68	-2.74
1,021.0	11.40	111.90	1,017.1	-35.4	46.6	-13.5	2.49	1.68	-10.00

<b>Company:</b>	Bayswater Exploration & Production, LLC	<b>Local Co-ordinate Reference:</b>	Well Matrix P-29HC
<b>Project:</b>	SEC.29-T6N-R65W	<b>TVD Reference:</b>	WELL @ 4729.5ft (RKB - 22.5')
<b>Site:</b>	Matrix 29- Pad Sec.29-T6N-R65W	<b>MD Reference:</b>	WELL @ 4729.5ft (RKB - 22.5')
<b>Well:</b>	Matrix P-29HC	<b>North Reference:</b>	True
<b>Wellbore:</b>	Wellbore #1	<b>Survey Calculation Method:</b>	Minimum Curvature
<b>Design:</b>	Wellbore #1	<b>Database:</b>	Landmark

## Survey

Measured Depth (ft)	Inclination (°)	Azimuth (°)	Vertical Depth (ft)	+N/-S (ft)	+E/-W (ft)	Vertical Section (ft)	Dogleg Rate (°/100ft)	Build Rate (°/100ft)	Turn Rate (°/100ft)
1,116.0	14.20	110.10	1,109.8	-42.9	66.3	-12.4	2.98	2.95	-1.89
1,209.0	13.80	110.60	1,200.0	-50.7	87.4	-11.0	0.45	-0.43	0.54
1,301.0	15.60	106.10	1,289.0	-58.0	109.5	-8.8	2.32	1.96	-4.89
1,393.0	17.90	106.10	1,377.1	-65.3	135.0	-5.2	2.50	2.50	0.00
1,485.0	17.00	104.50	1,464.9	-72.6	161.6	-1.1	1.11	-0.98	-1.74
1,577.0	16.40	109.10	1,553.0	-80.2	186.9	2.1	1.58	-0.65	5.00
1,669.0	15.50	109.20	1,641.4	-88.5	210.8	4.2	0.98	-0.98	0.11
1,761.0	16.20	112.60	1,729.9	-97.5	234.3	5.5	1.26	0.76	3.70
1,853.0	16.20	115.20	1,818.3	-107.9	257.7	5.5	0.79	0.00	2.83
1,945.0	17.30	115.20	1,906.4	-119.2	281.7	4.8	1.20	1.20	0.00
2,037.0	17.20	112.10	1,994.2	-130.1	306.7	4.9	1.00	-0.11	-3.37
2,129.0	19.50	113.10	2,081.6	-141.3	333.4	5.5	2.52	2.50	1.09
2,222.0	16.80	112.60	2,169.9	-152.5	360.1	6.0	2.91	-2.90	-0.54
2,314.0	17.50	113.80	2,257.8	-163.2	385.0	6.3	0.85	0.76	1.30
2,406.0	18.30	113.50	2,345.4	-174.6	410.9	6.4	0.88	0.87	-0.33
2,498.0	18.60	110.30	2,432.7	-185.4	437.9	7.4	1.15	0.33	-3.48
2,593.0	19.10	110.30	2,522.6	-196.1	466.7	9.3	0.53	0.53	0.00
2,688.0	17.90	113.60	2,612.7	-207.3	494.7	10.3	1.68	-1.26	3.47
2,784.0	17.20	119.60	2,704.2	-220.2	520.6	8.9	2.02	-0.73	6.25
2,879.0	20.00	116.30	2,794.2	-234.4	547.3	6.8	3.15	2.95	-3.47
2,974.0	18.90	114.00	2,883.8	-247.8	576.0	6.1	1.41	-1.16	-2.42
3,070.0	18.00	116.40	2,974.9	-260.7	603.5	5.4	1.23	-0.94	2.50
3,165.0	20.00	115.40	3,064.7	-274.2	631.3	4.3	2.13	2.11	-1.05
3,260.0	18.10	110.80	3,154.5	-286.4	659.8	4.6	2.55	-2.00	-4.84
3,355.0	17.70	113.60	3,244.9	-297.5	686.8	5.5	1.00	-0.42	2.95
3,450.0	18.00	114.20	3,335.3	-309.3	713.4	5.4	0.37	0.32	0.63
3,545.0	17.40	110.30	3,425.8	-320.2	740.1	6.2	1.40	-0.63	-4.11
3,641.0	17.90	107.50	3,517.3	-329.6	767.6	8.7	1.03	0.52	-2.92
3,736.0	18.10	108.40	3,607.7	-338.7	795.6	11.7	0.36	0.21	0.95
3,831.0	20.60	115.20	3,697.3	-350.5	824.7	12.7	3.54	2.63	7.16
3,926.0	21.00	114.20	3,786.1	-364.5	855.4	12.2	0.56	0.42	-1.05
4,021.0	20.00	109.10	3,875.1	-376.8	886.2	13.5	2.15	-1.05	-5.37
4,117.0	17.60	104.70	3,966.0	-385.9	915.8	17.1	2.90	-2.50	-4.58
4,212.0	14.60	114.20	4,057.2	-394.5	940.6	19.3	4.19	-3.16	10.00
4,307.0	15.40	114.20	4,149.0	-404.5	963.0	19.2	0.84	0.84	0.00
4,402.0	16.40	112.90	4,240.4	-414.9	986.9	19.3	1.12	1.05	-1.37
4,497.0	16.80	110.80	4,331.4	-425.0	1,012.1	20.3	0.76	0.42	-2.21
4,592.0	18.60	112.80	4,421.9	-435.8	1,038.9	21.3	2.00	1.89	2.11
4,688.0	16.50	111.90	4,513.4	-446.8	1,065.7	22.0	2.21	-2.19	-0.94
4,783.0	18.20	114.20	4,604.1	-457.9	1,091.7	22.4	1.93	1.79	2.42
4,878.0	17.80	109.20	4,694.5	-468.8	1,119.0	23.4	1.68	-0.42	-5.26
4,973.0	17.60	107.50	4,785.0	-477.8	1,146.4	26.2	0.58	-0.21	-1.79
5,069.0	16.20	114.90	4,876.8	-487.9	1,172.4	27.6	2.67	-1.46	7.71
5,164.0	16.80	118.40	4,967.9	-500.0	1,196.5	26.2	1.22	0.63	3.68
5,259.0	19.00	115.90	5,058.3	-513.3	1,222.5	24.6	2.45	2.32	-2.63
5,354.0	17.60	115.60	5,148.5	-526.2	1,249.3	23.6	1.48	-1.47	-0.32
5,449.0	16.40	114.70	5,239.4	-538.0	1,274.5	22.9	1.29	-1.26	-0.95
5,544.0	17.30	108.50	5,330.3	-548.1	1,300.0	24.0	2.11	0.95	-6.53
5,639.0	18.10	111.90	5,420.8	-558.1	1,327.1	25.9	1.38	0.84	3.58
5,734.0	19.60	114.90	5,510.7	-570.3	1,355.3	26.1	1.88	1.58	3.16
5,830.0	18.50	112.90	5,601.4	-583.0	1,383.9	26.0	1.33	-1.15	-2.08
5,925.0	18.70	109.40	5,691.5	-593.9	1,412.2	27.4	1.19	0.21	-3.68
6,020.0	18.90	109.40	5,781.4	-604.1	1,441.0	29.8	0.21	0.21	0.00
6,115.0	15.20	112.10	5,872.2	-613.9	1,467.1	31.4	3.98	-3.89	2.84

<b>Company:</b>	Bayswater Exploration & Production, LLC	<b>Local Co-ordinate Reference:</b>	Well Matrix P-29HC
<b>Project:</b>	SEC.29-T6N-R65W	<b>TVD Reference:</b>	WELL @ 4729.5ft (RKB - 22.5')
<b>Site:</b>	Matrix 29- Pad Sec.29-T6N-R65W	<b>MD Reference:</b>	WELL @ 4729.5ft (RKB - 22.5')
<b>Well:</b>	Matrix P-29HC	<b>North Reference:</b>	True
<b>Wellbore:</b>	Wellbore #1	<b>Survey Calculation Method:</b>	Minimum Curvature
<b>Design:</b>	Wellbore #1	<b>Database:</b>	Landmark

## Survey

Measured Depth (ft)	Inclination (°)	Azimuth (°)	Vertical Depth (ft)	+N/-S (ft)	+E/-W (ft)	Vertical Section (ft)	Dogleg Rate (°/100ft)	Build Rate (°/100ft)	Turn Rate (°/100ft)
6,210.0	16.00	112.80	5,963.7	-623.7	1,490.7	32.0	0.87	0.84	0.74
6,306.0	19.00	115.40	6,055.3	-635.5	1,517.0	31.8	3.23	3.13	2.71
6,401.0	19.90	108.70	6,144.9	-647.3	1,546.3	32.8	2.53	0.95	-7.05
6,496.0	17.70	102.20	6,234.8	-655.6	1,575.8	37.2	3.19	-2.32	-6.84
6,591.0	16.50	103.10	6,325.6	-661.7	1,603.0	42.6	1.29	-1.26	0.95
6,639.0	14.80	96.10	6,371.8	-663.9	1,615.7	45.7	5.29	-3.54	-14.58
6,686.0	15.00	76.70	6,417.3	-663.1	1,627.6	51.3	10.57	0.43	-41.28
6,734.0	18.10	68.80	6,463.3	-659.0	1,640.6	60.3	7.97	6.46	-16.46
6,781.0	19.60	61.10	6,507.8	-652.5	1,654.4	71.7	6.17	3.19	-16.38
6,829.0	19.20	50.00	6,553.1	-643.6	1,667.5	85.2	7.72	-0.83	-23.13
6,877.0	19.60	44.40	6,598.3	-632.7	1,679.1	99.8	3.96	0.83	-11.67
6,925.0	21.10	42.40	6,643.3	-620.6	1,690.6	115.6	3.44	3.13	-4.17
6,972.0	25.50	37.20	6,686.5	-606.3	1,702.4	133.4	10.33	9.36	-11.06
7,020.0	30.30	33.80	6,728.9	-588.0	1,715.4	155.4	10.53	10.00	-7.08
7,067.0	34.60	27.30	6,768.6	-566.3	1,728.1	180.5	11.77	9.15	-13.83
7,115.0	39.30	24.30	6,806.9	-540.3	1,740.7	209.3	10.49	9.79	-6.25
7,162.0	40.80	19.90	6,842.9	-512.3	1,752.0	239.5	6.82	3.19	-9.36
7,210.0	44.50	18.40	6,878.2	-481.5	1,762.7	271.9	7.99	7.71	-3.13
7,258.0	45.60	18.70	6,912.1	-449.3	1,773.5	305.7	2.33	2.29	0.63
7,306.0	49.90	15.70	6,944.4	-415.4	1,783.9	341.0	10.08	8.96	-6.25
7,353.0	55.60	13.60	6,972.8	-379.2	1,793.4	377.9	12.64	12.13	-4.47
7,401.0	60.80	10.80	6,998.1	-339.4	1,802.0	417.8	11.91	10.83	-5.83
7,448.0	65.20	8.70	7,019.5	-298.1	1,809.0	458.4	10.17	9.36	-4.47
7,496.0	66.70	6.20	7,039.0	-254.6	1,814.7	500.5	5.69	3.13	-5.21
7,543.0	70.40	6.10	7,056.2	-211.2	1,819.4	542.1	7.87	7.87	-0.21
7,591.0	74.60	5.40	7,070.6	-165.6	1,824.0	585.7	8.86	8.75	-1.46
7,638.0	80.00	4.60	7,081.0	-120.0	1,828.0	629.0	11.61	11.49	-1.70
7,686.0	82.90	4.10	7,088.1	-72.6	1,831.6	673.8	6.13	6.04	-1.04
7,734.0	84.80	2.20	7,093.2	-25.0	1,834.2	718.4	5.58	3.96	-3.96
7,780.0	87.00	2.00	7,096.5	20.9	1,835.9	761.0	4.80	4.78	-0.43
7,848.0	89.78	2.27	7,098.4	88.8	1,838.4	824.2	4.11	4.09	0.40
7,911.0	89.87	1.21	7,098.6	151.8	1,840.3	882.5	1.69	0.14	-1.68
8,005.0	88.90	0.16	7,099.6	245.7	1,841.4	969.0	1.52	-1.03	-1.12
8,099.0	88.72	358.75	7,101.6	339.7	1,840.5	1,054.6	1.51	-0.19	-1.50
8,193.0	89.08	358.84	7,103.4	433.7	1,838.6	1,139.7	0.39	0.38	0.10
8,287.0	89.78	359.72	7,104.3	527.7	1,837.4	1,225.2	1.20	0.74	0.94
8,350.2	91.32	359.60	7,103.7	590.9	1,837.0	1,282.9	2.44	2.44	-0.19
<b>WP1 (Matrix P-29HC)</b>									
8,381.0	92.07	359.54	7,102.8	621.6	1,836.8	1,310.9	2.44	2.44	-0.19
8,476.0	90.92	359.63	7,100.3	716.6	1,836.1	1,397.5	1.21	-1.21	0.09
8,570.0	90.57	358.93	7,099.1	810.6	1,834.9	1,483.0	0.83	-0.37	-0.74
8,664.0	91.10	358.05	7,097.7	904.5	1,832.4	1,567.9	1.09	0.56	-0.94
8,758.0	90.04	357.96	7,096.8	998.5	1,829.2	1,652.5	1.13	-1.13	-0.10
8,853.0	90.22	359.28	7,096.6	1,093.5	1,826.9	1,738.5	1.40	0.19	1.39
8,947.0	90.31	358.40	7,096.2	1,187.4	1,825.0	1,823.7	0.94	0.10	-0.94
9,041.0	89.87	359.72	7,096.0	1,281.4	1,823.4	1,909.0	1.48	-0.47	1.40
9,135.0	89.96	359.19	7,096.2	1,375.4	1,822.5	1,994.6	0.57	0.10	-0.56
9,200.2	89.29	358.95	7,096.6	1,440.6	1,821.5	2,053.9	1.10	-1.03	-0.37
<b>WP2 (Matrix P-29HC)</b>									
9,229.0	88.99	358.84	7,097.0	1,469.4	1,820.9	2,080.0	1.10	-1.03	-0.37
9,323.0	89.43	0.42	7,098.3	1,563.4	1,820.3	2,165.7	1.74	0.47	1.68
9,417.0	89.43	359.45	7,099.2	1,657.4	1,820.2	2,251.6	1.03	0.00	-1.03
9,511.0	89.34	0.33	7,100.3	1,751.4	1,820.0	2,337.5	0.94	-0.10	0.94
9,605.0	90.22	0.25	7,100.6	1,845.4	1,820.5	2,423.7	0.94	0.94	-0.09

<b>Company:</b>	Bayswater Exploration & Production, LLC	<b>Local Co-ordinate Reference:</b>	Well Matrix P-29HC
<b>Project:</b>	SEC.29-T6N-R65W	<b>TVD Reference:</b>	WELL @ 4729.5ft (RKB - 22.5')
<b>Site:</b>	Matrix 29- Pad Sec.29-T6N-R65W	<b>MD Reference:</b>	WELL @ 4729.5ft (RKB - 22.5')
<b>Well:</b>	Matrix P-29HC	<b>North Reference:</b>	True
<b>Wellbore:</b>	Wellbore #1	<b>Survey Calculation Method:</b>	Minimum Curvature
<b>Design:</b>	Wellbore #1	<b>Database:</b>	Landmark

## Survey

Measured Depth (ft)	Inclination (°)	Azimuth (°)	Vertical Depth (ft)	+N/-S (ft)	+E/-W (ft)	Vertical Section (ft)	Dogleg Rate (°/100ft)	Build Rate (°/100ft)	Turn Rate (°/100ft)
9,699.0	89.34	0.25	7,101.0	1,939.4	1,820.9	2,509.8	0.94	-0.94	0.00
9,793.0	90.04	359.37	7,101.5	2,033.4	1,820.6	2,595.7	1.20	0.74	-0.94
9,887.0	89.34	0.33	7,102.0	2,127.4	1,820.4	2,681.6	1.26	-0.74	1.02
9,981.0	90.13	359.63	7,102.4	2,221.4	1,820.3	2,767.5	1.12	0.84	-0.74
10,075.0	89.60	0.25	7,102.6	2,315.4	1,820.2	2,853.5	0.87	-0.56	0.66
10,170.0	88.55	0.33	7,104.2	2,410.3	1,820.7	2,940.5	1.11	-1.11	0.08
10,264.0	89.78	359.89	7,105.6	2,504.3	1,820.9	3,026.6	1.39	1.31	-0.47
10,359.0	89.08	359.54	7,106.5	2,599.3	1,820.4	3,113.3	0.82	-0.74	-0.37
10,400.5	89.23	359.46	7,107.1	2,640.8	1,820.1	3,151.1	0.41	0.37	-0.18
<b>WP3 (Matrix P-29HC)</b>									
10,453.0	89.43	359.37	7,107.7	2,693.3	1,819.5	3,198.9	0.41	0.37	-0.18
10,548.0	89.34	359.37	7,108.7	2,788.3	1,818.5	3,285.4	0.09	-0.09	0.00
10,642.0	90.48	359.10	7,108.9	2,882.3	1,817.2	3,370.8	1.25	1.21	-0.29
10,736.0	90.57	359.37	7,108.0	2,976.3	1,816.0	3,456.3	0.30	0.10	0.29
10,831.0	90.13	359.89	7,107.4	3,071.3	1,815.4	3,542.9	0.72	-0.46	0.55
10,925.0	91.10	359.89	7,106.4	3,165.3	1,815.2	3,628.8	1.03	1.03	0.00
11,019.0	90.40	359.54	7,105.2	3,259.2	1,814.7	3,714.6	0.83	-0.74	-0.37
11,113.0	90.13	358.58	7,104.8	3,353.2	1,813.2	3,800.0	1.06	-0.29	-1.02
11,207.0	89.60	358.66	7,105.0	3,447.2	1,810.9	3,885.0	0.57	-0.56	0.09
11,301.0	89.96	357.43	7,105.4	3,541.1	1,807.7	3,969.6	1.36	0.38	-1.31
11,395.0	91.28	357.96	7,104.3	3,635.1	1,803.9	4,054.0	1.51	1.40	0.56
11,489.0	90.13	359.28	7,103.2	3,729.0	1,801.6	4,139.0	1.86	-1.22	1.40
11,584.0	89.52	0.69	7,103.5	3,824.0	1,801.6	4,225.9	1.62	-0.64	1.48
11,678.0	90.13	359.81	7,103.8	3,918.0	1,802.0	4,312.1	1.14	0.65	-0.94
11,780.0	91.01	358.66	7,102.7	4,020.0	1,800.7	4,404.8	1.42	0.86	-1.13
11,863.0	91.01	358.66	7,101.3	4,103.0	1,798.7	4,479.9	0.00	0.00	0.00
<b>BHL 470'FNL, 1137'FEL</b>									

## Design Targets

Target Name	Dip Angle (°)	Dip Dir. (°)	TVD (ft)	+N/-S (ft)	+E/-W (ft)	Northing (ft)	Easting (ft)	Latitude	Longitude
- hit/miss target									
- Shape									
SHL 555'FSL, 2263'FI	0.00	0.00	1.0	0.0	0.0	1,408,887.52	3,225,807.50	40.452962	-104.688586
- survey hits target center									
- Point									
BHL 470'FNL, 1137'FI	0.00	0.00	7,105.0	4,103.7	1,813.1	1,413,007.50	3,227,582.93	40.464226	-104.682070
- survey misses target center by 14.9ft at 11863.0ft MD (7101.3 TVD, 4103.0 N, 1798.7 E)									
- Point									

Checked By: \_\_\_\_\_ Approved By: \_\_\_\_\_ Date: \_\_\_\_\_