

# Bayswater Exploration & Production, LLC

Well Name: **Matrix O-29HN**

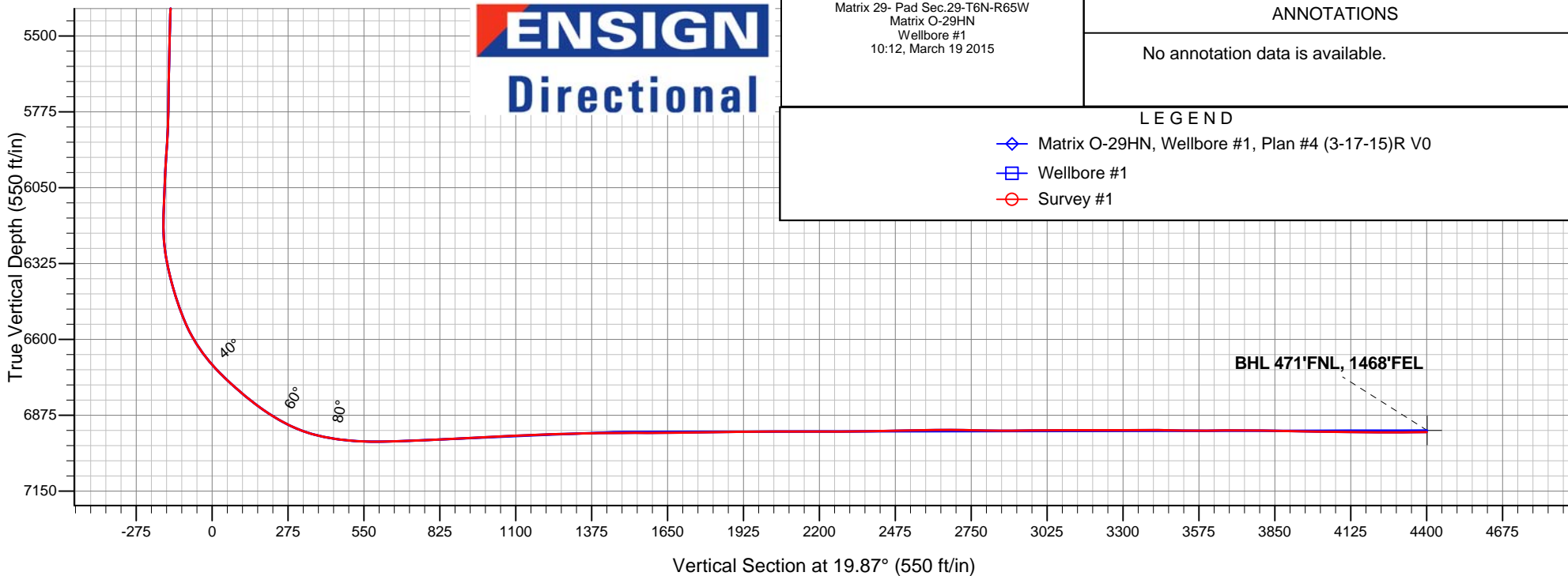
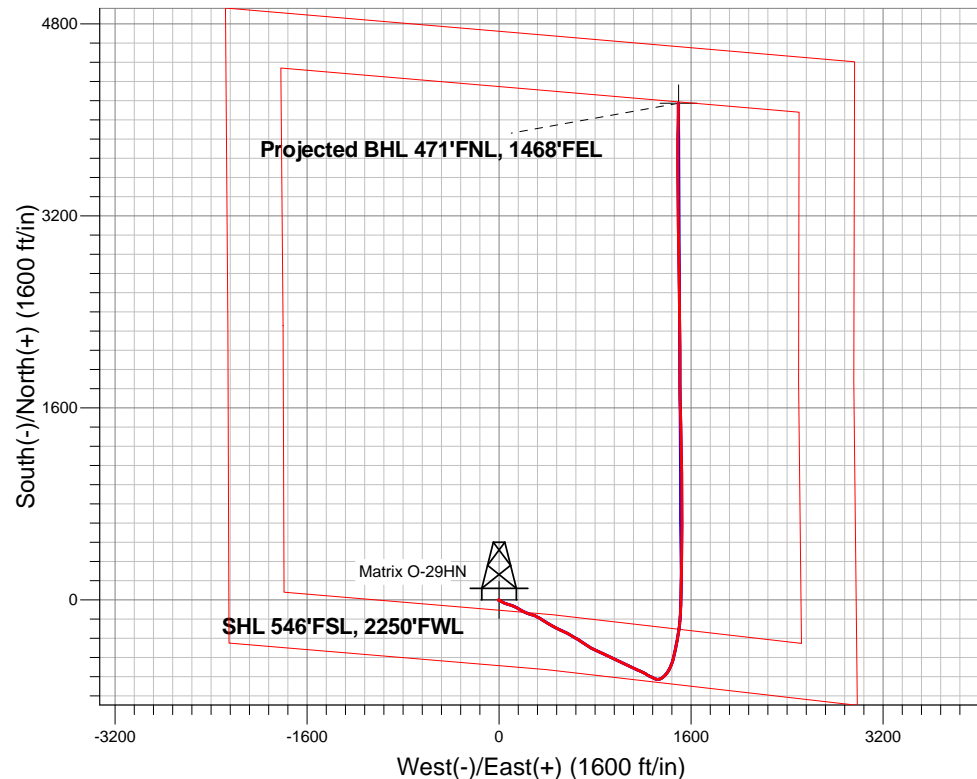
Surface Location: Matrix 29- Pad Sec.29-T6N-R65W  
North American Datum 1983 , US State Plane 1983 , Colorado Northern Zone

Ground Elevation: 4707.0

+N/-S	+E/-W	Northing	Easting	Latitude	Longitude	Slot
0.0	0.0	1408879.73	3225794.77	40.452941	-104.688632	
RKB - 22.5' WELL @ 4729.5ft (RKB - 22.5')						

## FINAL SURVEY

**Projected Bottom Hole Location**  
**11700'MD 6936'TVD 4139'N & 1495'E of SHL**  
**90.7 degree Incl @ 0.4 degree AZM**





# **Bayswater Exploration & Production, LLC**

**SEC.29-T6N-R65W**

**Matrix 29- Pad Sec.29-T6N-R65W**

**Matrix O-29HN**

**Wellbore #1**

**Survey: Survey #1**

## **Standard Survey Report**

**19 March, 2015**



**BAYSWATER**  
**EXPLORATION & PRODUCTION, LLC**

<b>Company:</b>	Bayswater Exploration & Production, LLC	<b>Local Co-ordinate Reference:</b>	Well Matrix O-29HN
<b>Project:</b>	SEC.29-T6N-R65W	<b>TVD Reference:</b>	WELL @ 4729.5ft (RKB - 22.5')
<b>Site:</b>	Matrix 29- Pad Sec.29-T6N-R65W	<b>MD Reference:</b>	WELL @ 4729.5ft (RKB - 22.5')
<b>Well:</b>	Matrix O-29HN	<b>North Reference:</b>	True
<b>Wellbore:</b>	Wellbore #1	<b>Survey Calculation Method:</b>	Minimum Curvature
<b>Design:</b>	Wellbore #1	<b>Database:</b>	Landmark

<b>Project</b>	SEC.29-T6N-R65W		
<b>Map System:</b>	US State Plane 1983	<b>System Datum:</b>	Mean Sea Level
<b>Geo Datum:</b>	North American Datum 1983		Using Well Reference Point
<b>Map Zone:</b>	Colorado Northern Zone		Using geodetic scale factor

Site	Matrix 29- Pad Sec.29-T6N-R65W				
Site Position:		Northing:	1,408,840.92 ft	Latitude:	40.452836
From:	Lat/Long	Easting:	3,225,730.56 ft	Longitude:	-104.688864
Position Uncertainty:	0.0 ft	Slot Radius:	"	Grid Convergence:	0.52 °

Well	Matrix O-29HN					
Well Position	+N/-S	0.0 ft	Northing:	1,408,879.73 ft	Latitude:	40.452941
	+E/-W	0.0 ft	Easting:	3,225,794.77 ft	Longitude:	-104.688632
Position Uncertainty		0.0 ft	Wellhead Elevation:	ft	Ground Level:	4,707.0 ft

<b>Wellbore</b>	Wellbore #1				
<b>Magnetics</b>	<b>Model Name</b>	<b>Sample Date</b>	<b>Declination (°)</b>	<b>Dip Angle (°)</b>	<b>Field Strength (nT)</b>
	IGRF2010	3/17/2015	8.32	66.97	52,772

<b>Design</b>	Wellbore #1				
<b>Audit Notes:</b>					
<b>Version:</b>	1.0	<b>Phase:</b>	ACTUAL	<b>Tie On Depth:</b>	0.0
<b>Vertical Section:</b>	<b>Depth From (TVD) (ft)</b>	<b>+N/-S (ft)</b>	<b>+E/-W (ft)</b>	<b>Direction (°)</b>	
	0.0	0.0	0.0	19.87	

<b>Survey Program</b>	<b>Date</b>	3/19/2015			
<b>From (ft)</b>	<b>To (ft)</b>	<b>Survey (Wellbore)</b>	<b>Tool Name</b>	<b>Description</b>	
128.0	11,700.0	Survey #1 (Wellbore #1)	MWD	MWD - Standard	

<b>Survey</b>										
<b>Measured Depth (ft)</b>	<b>Inclination (°)</b>	<b>Azimuth (°)</b>	<b>Vertical Depth (ft)</b>	<b>+N/-S (ft)</b>	<b>+E/-W (ft)</b>	<b>Vertical Section (ft)</b>	<b>Dogleg Rate (°/100ft)</b>	<b>Build Rate (°/100ft)</b>	<b>Turn Rate (°/100ft)</b>	
0.0	0.00	0.00	0.0	0.0	0.0	0.0	0.00	0.00	0.00	
1.0	0.00	262.70	1.0	0.0	0.0	0.0	0.31	0.31	0.00	
<b>SHL 546'FSL, 2250'FWL</b>										
128.0	0.40	262.70	128.0	-0.1	-0.4	-0.2	0.31	0.31	0.00	
220.0	0.40	249.60	220.0	-0.2	-1.1	-0.6	0.10	0.00	-14.24	
312.0	0.50	226.90	312.0	-0.6	-1.7	-1.1	0.22	0.11	-24.67	
404.0	0.50	231.30	404.0	-1.1	-2.3	-1.8	0.04	0.00	4.78	
496.0	0.10	175.40	496.0	-1.5	-2.6	-2.2	0.49	-0.43	-60.76	
588.0	0.40	50.20	588.0	-1.3	-2.3	-2.0	0.51	0.33	-136.09	
680.0	0.80	20.70	680.0	-0.5	-1.8	-1.1	0.54	0.43	-32.07	
705.0	0.60	50.40	705.0	-0.3	-1.7	-0.8	1.63	-0.80	118.80	
831.0	2.70	121.20	830.9	-1.4	1.4	-0.8	2.04	1.67	56.19	
926.0	6.40	120.30	925.6	-5.2	7.9	-2.2	3.90	3.89	-0.95	

<b>Company:</b>	Bayswater Exploration & Production, LLC	<b>Local Co-ordinate Reference:</b>	Well Matrix O-29HN
<b>Project:</b>	SEC.29-T6N-R65W	<b>TVD Reference:</b>	WELL @ 4729.5ft (RKB - 22.5')
<b>Site:</b>	Matrix 29- Pad Sec.29-T6N-R65W	<b>MD Reference:</b>	WELL @ 4729.5ft (RKB - 22.5')
<b>Well:</b>	Matrix O-29HN	<b>North Reference:</b>	True
<b>Wellbore:</b>	Wellbore #1	<b>Survey Calculation Method:</b>	Minimum Curvature
<b>Design:</b>	Wellbore #1	<b>Database:</b>	Landmark

## Survey

Measured Depth (ft)	Inclination (°)	Azimuth (°)	Vertical Depth (ft)	+N/-S (ft)	+E/-W (ft)	Vertical Section (ft)	Dogleg Rate (°/100ft)	Build Rate (°/100ft)	Turn Rate (°/100ft)
1,021.0	7.80	121.40	1,019.9	-11.3	17.9	-4.5	1.48	1.47	1.16
1,117.0	7.20	120.00	1,115.1	-17.7	28.7	-6.9	0.65	-0.63	-1.46
1,209.0	9.00	120.70	1,206.1	-24.2	39.9	-9.2	1.96	1.96	0.76
1,301.0	8.50	106.30	1,297.1	-29.8	52.6	-10.1	2.44	-0.54	-15.65
1,393.0	11.00	105.90	1,387.7	-34.1	67.6	-9.1	2.72	2.72	-0.43
1,485.0	10.40	107.00	1,478.1	-38.9	83.9	-8.1	0.69	-0.65	1.20
1,577.0	9.60	109.40	1,568.7	-43.9	99.1	-7.6	0.98	-0.87	2.61
1,669.0	10.90	114.50	1,659.3	-50.1	114.3	-8.3	1.72	1.41	5.54
1,761.0	13.00	114.00	1,749.3	-57.9	131.6	-9.7	2.29	2.28	-0.54
1,853.0	15.00	116.50	1,838.5	-67.4	151.8	-11.8	2.27	2.17	2.72
1,945.0	15.10	122.10	1,927.4	-79.1	172.6	-15.7	1.58	0.11	6.09
2,038.0	18.30	121.40	2,016.5	-93.1	195.3	-21.2	3.45	3.44	-0.75
2,130.0	16.90	110.10	2,104.2	-105.3	220.2	-24.2	4.01	-1.52	-12.28
2,222.0	17.80	111.20	2,192.0	-114.9	245.9	-24.6	1.04	0.98	1.20
2,314.0	15.80	103.80	2,280.1	-123.0	271.1	-23.6	3.18	-2.17	-8.04
2,406.0	14.60	112.10	2,368.9	-130.4	294.0	-22.7	2.70	-1.30	9.02
2,498.0	15.10	117.30	2,457.8	-140.2	315.4	-24.7	1.55	0.54	5.65
2,593.0	16.80	120.30	2,549.1	-152.8	338.3	-28.8	1.99	1.79	3.16
2,689.0	18.30	119.80	2,640.7	-167.3	363.4	-33.9	1.57	1.56	-0.52
2,784.0	19.30	124.40	2,730.6	-183.6	389.2	-40.4	1.88	1.05	4.84
2,879.0	20.00	123.50	2,820.1	-201.4	415.8	-48.2	0.80	0.74	-0.95
2,974.0	18.80	117.90	2,909.7	-217.6	442.8	-54.1	2.33	-1.26	-5.89
3,070.0	18.00	113.80	3,000.8	-230.8	470.1	-57.3	1.58	-0.83	-4.27
3,165.0	18.10	116.30	3,091.1	-243.3	496.7	-60.0	0.82	0.11	2.63
3,260.0	17.60	115.10	3,181.5	-255.9	523.0	-62.9	0.65	-0.53	-1.26
3,355.0	16.90	114.50	3,272.2	-267.7	548.5	-65.4	0.76	-0.74	-0.63
3,450.0	16.20	119.30	3,363.3	-279.9	572.7	-68.6	1.62	-0.74	5.05
3,545.0	16.80	121.60	3,454.4	-293.6	595.9	-73.6	0.93	0.63	2.42
3,641.0	17.70	120.50	3,546.1	-308.3	620.3	-79.1	1.00	0.94	-1.15
3,736.0	16.70	117.20	3,636.8	-321.9	644.9	-83.5	1.47	-1.05	-3.47
3,831.0	19.40	125.30	3,727.2	-337.2	669.9	-89.5	3.87	2.84	8.53
3,926.0	20.10	124.00	3,816.6	-355.5	696.3	-97.7	0.87	0.74	-1.37
4,021.0	20.40	123.30	3,905.7	-373.7	723.7	-105.5	0.41	0.32	-0.74
4,117.0	20.30	122.30	3,995.7	-391.8	751.8	-113.0	0.38	-0.10	-1.04
4,212.0	17.30	115.90	4,085.6	-406.7	778.4	-118.0	3.83	-3.16	-6.74
4,307.0	15.80	114.40	4,176.7	-418.3	802.9	-120.5	1.64	-1.58	-1.58
4,402.0	14.80	112.60	4,268.3	-428.3	825.9	-122.1	1.17	-1.05	-1.89
4,497.0	13.20	112.10	4,360.5	-437.0	847.1	-123.1	1.69	-1.68	-0.53
4,592.0	13.70	117.30	4,452.9	-446.2	867.2	-125.0	1.38	0.53	5.47
4,688.0	14.20	118.60	4,546.1	-457.1	887.6	-128.2	0.61	0.52	1.35
4,783.0	15.30	115.90	4,638.0	-468.2	909.1	-131.3	1.37	1.16	-2.84
4,878.0	13.50	113.70	4,730.0	-478.1	930.5	-133.4	1.98	-1.89	-2.32
4,973.0	15.30	115.90	4,822.0	-488.0	952.0	-135.4	1.98	1.89	2.32
5,069.0	14.70	113.10	4,914.7	-498.3	974.6	-137.5	0.98	-0.63	-2.92
5,164.0	15.30	117.90	5,006.5	-508.9	996.7	-139.9	1.45	0.63	5.05
5,259.0	17.20	117.00	5,097.7	-521.2	1,020.3	-143.4	2.02	2.00	-0.95
5,354.0	14.70	114.20	5,189.0	-532.5	1,043.8	-146.0	2.75	-2.63	-2.95
5,450.0	14.70	113.70	5,281.9	-542.4	1,066.1	-147.8	0.13	0.00	-0.52
5,545.0	14.50	117.00	5,373.8	-552.6	1,087.7	-150.1	0.90	-0.21	3.47
5,640.0	15.80	114.20	5,465.5	-563.3	1,110.1	-152.5	1.57	1.37	-2.95
5,735.0	16.90	116.10	5,556.7	-574.7	1,134.3	-155.0	1.29	1.16	2.00
5,830.0	15.70	111.90	5,647.8	-585.6	1,158.7	-157.0	1.77	-1.26	-4.42
5,925.0	13.90	114.50	5,739.7	-595.1	1,181.0	-158.3	2.02	-1.89	2.74
6,020.0	14.40	116.50	5,831.8	-605.1	1,201.9	-160.6	0.74	0.53	2.11

<b>Company:</b>	Bayswater Exploration & Production, LLC	<b>Local Co-ordinate Reference:</b>	Well Matrix O-29HN
<b>Project:</b>	SEC.29-T6N-R65W	<b>TVD Reference:</b>	WELL @ 4729.5ft (RKB - 22.5')
<b>Site:</b>	Matrix 29- Pad Sec.29-T6N-R65W	<b>MD Reference:</b>	WELL @ 4729.5ft (RKB - 22.5')
<b>Well:</b>	Matrix O-29HN	<b>North Reference:</b>	True
<b>Wellbore:</b>	Wellbore #1	<b>Survey Calculation Method:</b>	Minimum Curvature
<b>Design:</b>	Wellbore #1	<b>Database:</b>	Landmark

Survey

Measured Depth (ft)	Inclination (°)	Azimuth (°)	Vertical Depth (ft)	+N/-S (ft)	+E/-W (ft)	Vertical Section (ft)	Dogleg Rate (°/100ft)	Build Rate (°/100ft)	Turn Rate (°/100ft)
6,115.0	21.00	121.40	5,922.3	-619.3	1,227.1	-165.4	7.12	6.95	5.16
6,211.0	18.40	117.30	6,012.6	-635.2	1,255.2	-170.8	3.07	-2.71	-4.27
6,306.0	17.10	116.30	6,103.1	-648.2	1,281.1	-174.3	1.41	-1.37	-1.05
6,401.0	15.80	111.70	6,194.2	-659.2	1,305.6	-176.3	1.94	-1.37	-4.84
6,449.0	15.40	94.30	6,240.5	-662.1	1,318.0	-174.8	9.75	-0.83	-36.25
6,496.0	16.00	78.80	6,285.8	-661.3	1,330.6	-169.7	8.99	1.28	-32.98
6,544.0	17.40	67.80	6,331.7	-657.3	1,343.8	-161.5	7.19	2.92	-22.92
6,591.0	18.30	58.30	6,376.5	-650.8	1,356.5	-151.0	6.48	1.91	-20.21
6,639.0	18.60	50.50	6,422.0	-641.9	1,368.9	-138.5	5.18	0.63	-16.25
6,686.0	19.80	43.90	6,466.4	-631.4	1,380.2	-124.8	5.27	2.55	-14.04
6,734.0	22.20	39.80	6,511.2	-618.6	1,391.6	-108.9	5.86	5.00	-8.54
6,782.0	26.20	35.40	6,555.0	-603.0	1,403.6	-90.1	9.14	8.33	-9.17
6,830.0	30.40	28.90	6,597.3	-583.7	1,415.6	-67.9	10.84	8.75	-13.54
6,877.0	34.80	24.90	6,636.9	-561.1	1,427.0	-42.8	10.42	9.36	-8.51
6,925.0	39.40	20.70	6,675.1	-534.4	1,438.1	-13.9	10.94	9.58	-8.75
6,972.0	43.40	15.60	6,710.4	-504.9	1,447.8	17.2	11.13	8.51	-10.85
7,020.0	47.00	12.90	6,744.2	-471.9	1,456.1	51.0	8.49	7.50	-5.63
7,067.0	48.70	12.60	6,775.8	-437.9	1,463.8	85.6	3.65	3.62	-0.64
7,115.0	50.80	12.10	6,806.8	-402.1	1,471.6	121.9	4.45	4.38	-1.04
7,162.0	53.20	11.20	6,835.7	-365.9	1,479.1	158.6	5.32	5.11	-1.91
7,210.0	56.20	10.30	6,863.4	-327.4	1,486.4	197.3	6.43	6.25	-1.88
7,258.0	60.30	9.60	6,888.7	-287.2	1,493.5	237.4	8.63	8.54	-1.46
7,306.0	64.50	8.20	6,910.9	-245.2	1,500.0	279.2	9.12	8.75	-2.92
7,353.0	69.30	5.40	6,929.4	-202.3	1,505.1	321.3	11.59	10.21	-5.96
7,401.0	75.30	4.10	6,943.9	-156.7	1,508.9	365.4	12.76	12.50	-2.71
7,448.0	79.70	3.40	6,954.1	-110.9	1,511.9	409.5	9.47	9.36	-1.49
7,496.0	82.30	2.40	6,961.6	-63.6	1,514.3	454.8	5.79	5.42	-2.08
7,543.0	85.10	0.80	6,966.8	-16.9	1,515.6	499.2	6.85	5.96	-3.40
7,579.0	87.20	0.80	6,969.2	19.0	1,516.1	533.1	5.83	5.83	0.00
7,651.0	90.70	1.70	6,970.5	91.0	1,517.7	601.3	5.02	4.86	1.25
7,745.0	91.80	1.80	6,968.5	184.9	1,520.5	690.6	1.18	1.17	0.11
7,840.0	92.50	0.40	6,964.9	279.8	1,522.4	780.5	1.65	0.74	-1.47
7,934.0	92.60	359.90	6,960.7	373.7	1,522.6	868.9	0.54	0.11	-0.53
8,028.0	92.90	0.90	6,956.2	467.6	1,523.3	957.5	1.11	0.32	1.06
8,122.0	92.90	0.20	6,951.5	561.5	1,524.2	1,046.0	0.74	0.00	-0.74
8,216.0	92.30	0.20	6,947.2	655.4	1,524.5	1,134.5	0.64	-0.64	0.00
8,310.0	91.20	359.90	6,944.3	749.3	1,524.6	1,222.9	1.21	-1.17	-0.32
8,405.0	92.00	359.20	6,941.7	844.3	1,523.8	1,311.9	1.12	0.84	-0.74
8,498.0	90.20	0.40	6,939.9	937.3	1,523.5	1,399.2	2.33	-1.94	1.29
8,593.0	90.70	359.40	6,939.1	1,032.3	1,523.3	1,488.5	1.18	0.53	-1.05
8,630.8	90.18	359.04	6,938.8	1,070.1	1,522.8	1,523.9	1.68	-1.38	-0.96
<b>WP #1 (Matrix O-29HN)</b>									
8,687.0	89.40	358.50	6,939.1	1,126.3	1,521.6	1,576.3	1.68	-1.38	-0.96
8,781.0	91.20	358.80	6,938.6	1,220.2	1,519.4	1,664.0	1.94	1.91	0.32
8,875.0	90.70	358.50	6,937.0	1,314.2	1,517.2	1,751.6	0.62	-0.53	-0.32
8,969.0	90.70	0.10	6,935.9	1,408.2	1,516.0	1,839.6	1.70	0.00	1.70
9,064.0	90.50	359.20	6,934.9	1,503.2	1,515.5	1,928.7	0.97	-0.21	-0.95
9,158.0	90.00	357.10	6,934.5	1,597.1	1,512.4	2,016.0	2.30	-0.53	-2.23
9,252.0	90.50	359.00	6,934.0	1,691.0	1,509.2	2,103.3	2.09	0.53	2.02
9,346.0	89.50	359.00	6,934.0	1,785.0	1,507.6	2,191.1	1.06	-1.06	0.00
9,440.0	90.60	1.10	6,934.0	1,879.0	1,507.7	2,279.6	2.52	1.17	2.23
9,535.0	90.60	359.90	6,933.0	1,974.0	1,508.5	2,369.2	1.26	0.00	-1.26
9,628.0	90.90	359.50	6,931.7	2,067.0	1,508.0	2,456.5	0.54	0.32	-0.43
9,722.0	91.50	359.00	6,929.8	2,161.0	1,506.8	2,544.4	0.83	0.64	-0.53

<b>Company:</b>	Bayswater Exploration & Production, LLC	<b>Local Co-ordinate Reference:</b>	Well Matrix O-29HN
<b>Project:</b>	SEC.29-T6N-R65W	<b>TVD Reference:</b>	WELL @ 4729.5ft (RKB - 22.5')
<b>Site:</b>	Matrix 29- Pad Sec.29-T6N-R65W	<b>MD Reference:</b>	WELL @ 4729.5ft (RKB - 22.5')
<b>Well:</b>	Matrix O-29HN	<b>North Reference:</b>	True
<b>Wellbore:</b>	Wellbore #1	<b>Survey Calculation Method:</b>	Minimum Curvature
<b>Design:</b>	Wellbore #1	<b>Database:</b>	Landmark

Survey									
Measured Depth (ft)	Inclination (°)	Azimuth (°)	Vertical Depth (ft)	+N/-S (ft)	+E/-W (ft)	Vertical Section (ft)	Dogleg Rate (°/100ft)	Build Rate (°/100ft)	Turn Rate (°/100ft)
9,816.0	90.50	359.70	6,928.1	2,255.0	1,505.7	2,632.4	1.30	-1.06	0.74
9,910.0	88.90	359.70	6,928.6	2,348.9	1,505.2	2,720.7	1.70	-1.70	0.00
10,004.0	88.80	358.80	6,930.5	2,442.9	1,504.0	2,808.6	0.96	-0.11	-0.96
10,098.0	90.50	359.40	6,931.1	2,536.9	1,502.5	2,896.5	1.92	1.81	0.64
10,193.0	91.10	359.70	6,929.8	2,631.9	1,501.8	2,985.6	0.71	0.63	0.32
10,287.0	89.90	358.70	6,928.9	2,725.9	1,500.5	3,073.6	1.66	-1.28	-1.06
10,381.0	89.60	359.50	6,929.4	2,819.9	1,499.0	3,161.4	0.91	-0.32	0.85
10,475.0	90.50	358.00	6,929.3	2,913.8	1,496.9	3,249.1	1.86	0.96	-1.60
10,570.0	90.40	359.50	6,928.5	3,008.8	1,494.9	3,337.7	1.58	-0.11	1.58
10,664.0	89.10	0.20	6,928.9	3,102.8	1,494.6	3,426.1	1.57	-1.38	0.74
10,759.0	89.30	359.70	6,930.3	3,197.8	1,494.5	3,515.4	0.57	0.21	-0.53
10,853.0	90.00	359.70	6,930.8	3,291.8	1,494.0	3,603.6	0.74	0.74	0.00
10,947.0	90.60	358.80	6,930.3	3,385.8	1,492.8	3,691.6	1.15	0.64	-0.96
11,042.0	89.70	358.30	6,930.1	3,480.7	1,490.4	3,780.1	1.08	-0.95	-0.53
11,136.0	88.40	0.20	6,931.7	3,574.7	1,489.2	3,868.0	2.45	-1.38	2.02
11,230.0	89.30	0.40	6,933.5	3,668.7	1,489.7	3,956.6	0.98	0.96	0.21
11,324.0	89.30	359.70	6,934.7	3,762.7	1,489.7	4,045.0	0.74	0.00	-0.74
11,419.0	89.10	1.30	6,936.0	3,857.7	1,490.6	4,134.6	1.70	-0.21	1.68
11,513.0	89.60	1.10	6,937.1	3,951.6	1,492.5	4,223.7	0.57	0.53	-0.21
11,607.0	90.70	0.60	6,936.8	4,045.6	1,493.9	4,312.6	1.29	1.17	-0.53
11,644.0	90.70	0.40	6,936.4	4,082.6	1,494.3	4,347.5	0.54	0.00	-0.54
11,700.0	90.70	0.40	6,935.7	4,138.6	1,494.7	4,400.3	0.00	0.00	0.00
BHL 470'FNL, 1467'FEL									

Design Targets									
Target Name	Dip Angle (°)	Dip Dir. (°)	TVD (ft)	+N/-S (ft)	+E/-W (ft)	Northing (ft)	Easting (ft)	Latitude	Longitude
SHL 546'FSL, 2250'F)	0.00	0.00	1.0	0.0	0.0	1,408,879.75	3,225,794.77	40.452941	-104.688632
- hit/miss target									
- Shape									
- survey hits target center									
- Point									
BHL 470'FNL, 1467'F)	0.00	0.00	6,930.0	4,139.8	1,495.9	1,413,032.87	3,227,252.68	40.464304	-104.683256
- survey misses target center by 6.0ft at 11700.0ft MD (6935.7 TVD, 4138.6 N, 1494.7 E)									
- Point									

Checked By: \_\_\_\_\_ Approved By: \_\_\_\_\_ Date: \_\_\_\_\_