

Note:

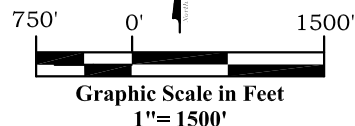
The measurement for determining any Designated Setback Location shall be made from the center of the Well nearest any Building Unit to the nearest wall or corner of such Building Unit.

Building - 1719'
 Building Unit - 1569'
 HOBV - 1615'
 DOAA - N/A
 Public Road - 1142'
 Above Grnd Util. - 915'
 Railroad - 5280'+
 Property Line - 256'

Current Surface Land Use :
 Range Land

Legend

- ◆ - Field Surveyed Section Corner
- ◆ - Field Surveyed Quarter Corner
- - Calculated Section Corner Location
- - Field Surveyed 1/16 Corner

**Surface: 21B-17-07-95**

920' FSL
 144 FEL
 Gnd El= 5700
 Pad El= 5702
NAD83
 Lat: 39.447530941°N
 Long: 108.012276367°W

Bottom: 21B-17-07-95

497' FNL
 1980' FWL
NAD83
 Lat: 39.443582001°N
 Long: 108.023492400°W

Notes:

1. LATITUDE AND LONGITUDE COORDINATES ARE DIFFERENTIALLY CORRECTED AND BASED ON PUBLISHED NGS CONTROL STATION "WDP-5". SYSTEM: UTM ZONE: 13 NORTH DATUM: NAD 1983 (CONUS)
2. ELEVATIONS ARE BASED ON NAVD OF 1983.
3. ALL BOTTOM AND TOP HOLE LOCATIONS ARE MEASURED 90 DEGREES FROM SECTION LINE.
4. USGS QUADRANGLE MAP "PARACHUTE".
5. CURRENT SURFACE LAND USE: RANGE LAND.
6. PDOP AT THE TIME OF LOCATION OF SURFACE WELL = 1.1
7. GPS OPERATOR: P. HOFFMANN

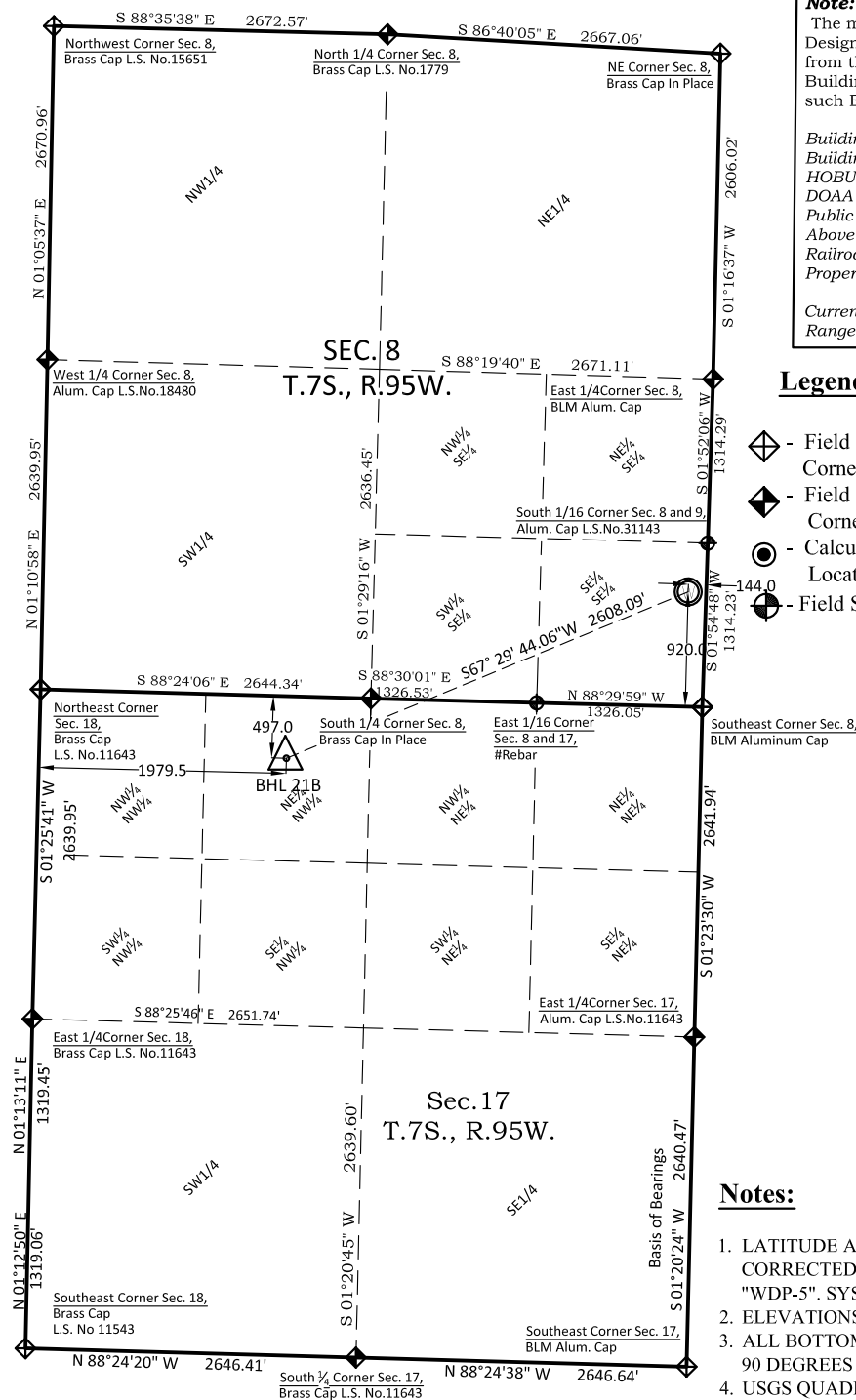
Prepared For: Ursa Operating Company LLC
Proposed Monument Ridge B 21B-17-7-95 Well, Surface
Situate in The SE 1/4 SE 1/4 Section 8, Township 7 South,
Range 95 West of the 6 th. Principal Meridian, County of
Garfield, State of Colorado.



Ursa OPERATING COMPANY

303.a Form 2

Monument Ridge B Pad
Monument Ridge B 21B-17-7-95
Section 17, Township 7 South, Range 95 West

**SURVEYOR'S CERTIFICATE**

I, SCOTT E. AIBNER, A REGISTERED LAND SURVEYOR, LICENSED UNDER THE LAWS OF THE STATE OF COLORADO, DO HEREBY CERTIFY THAT THE SURVEY SHOWN HEREON WAS PREPARED BY RIVER VALLEY SURVEY, INC., FOR URSA OPERATING COMPANY LLC, BY ME OR UNDER MY DIRECT SUPERVISION AND HAS BEEN STAKED ON THE GROUND AND SHOWN ON THE PLAT AND THAT THIS PLAT IS A TRUE REPRESENTATION THEREOF.

BY:

SCOTT E. AIBNER, COLORADO REG. NO. 31143



River Valley Survey, Inc.
 110 East 3rd. Street, Suite 213
 Rifle, Colorado 81650
 Ph: 970-379-7846

Project: RVS 06001-63

Field Date: 04-15-15

Scale: 1"= 1500'

Date: 06-12-15

Sheet: 1 of 1