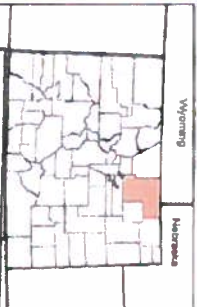
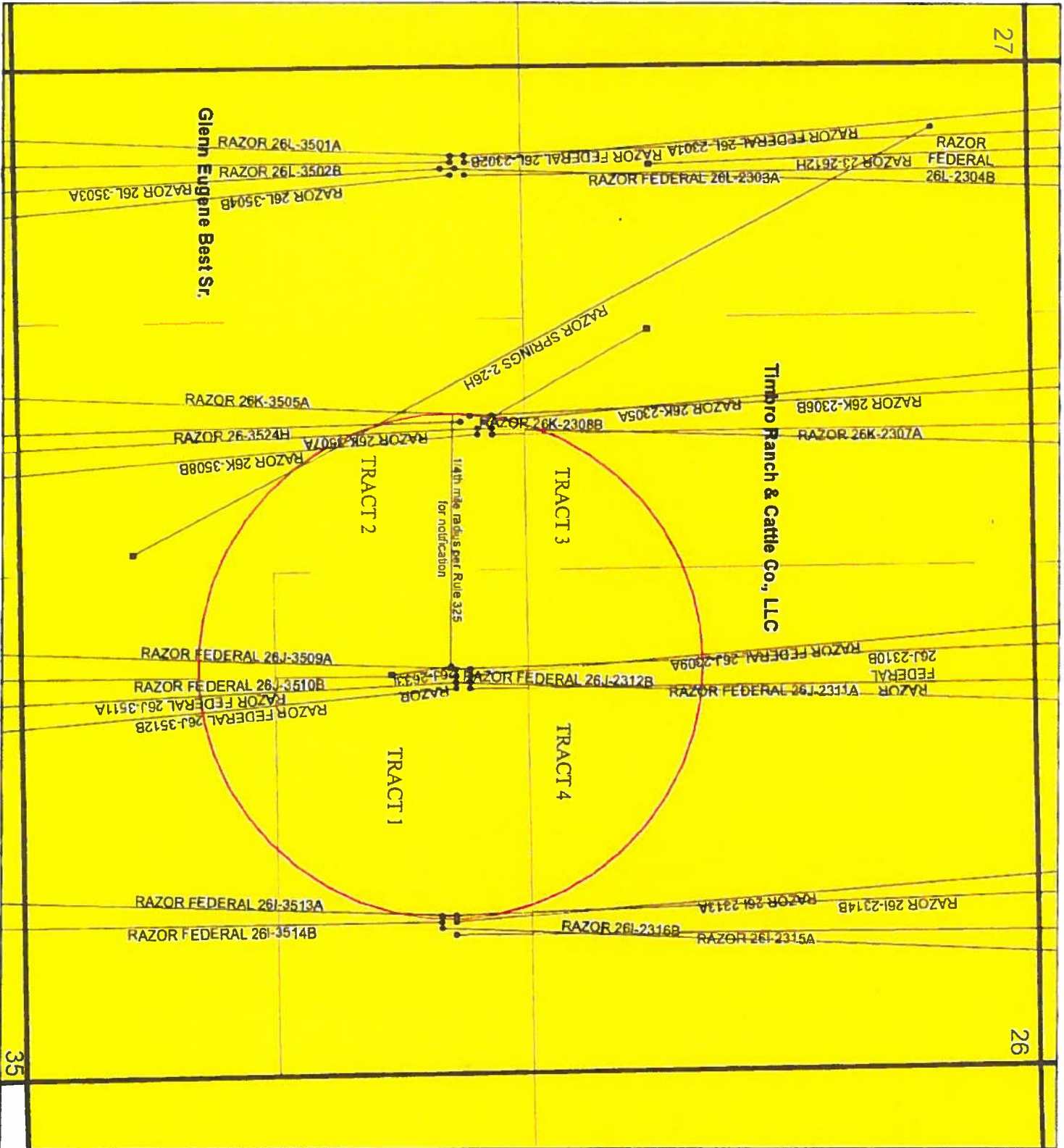


27

26



RECEIVED

DEC 18 2014

COGCC

Legend

- Surface Location
- Bottom Hole Location
- Well Paths
- Disposal Well
- 1/4 Mile Radius
- Leasehold
- WOCC Leasehold

MINERAL OWNERS

Baytown Minerals, LLC
 Brierley Minerals, LLC
 STX, LLC
 Muncieville, LLC
 Greg R. Thomas
 Smith Family Minerals Trust
 Atomic Cap Minerals, LLC
 Procyon Energy, LLC
 Paradise Energy, Inc.
 Scott Allen
 Legwood Family Trust
 Estate of Mary M. Stewart
 Remona T. Seber
 Donna J. Deegan
 Carolyn Seder
 H.C. Creek Royalty
 Timbro Ranch & Cattle Co., LLC
 William B. Whitaker, f. O&A Whitaker Energy



Redtail Prospect
 Razor 26J-2633L Disposal Well
 Weld County, Colorado

Scale: 1" = 1/4" 1/8"
 Date: 10/17/2014
 Projection: UTM Zone 13N
 Author: JSPM/Impression