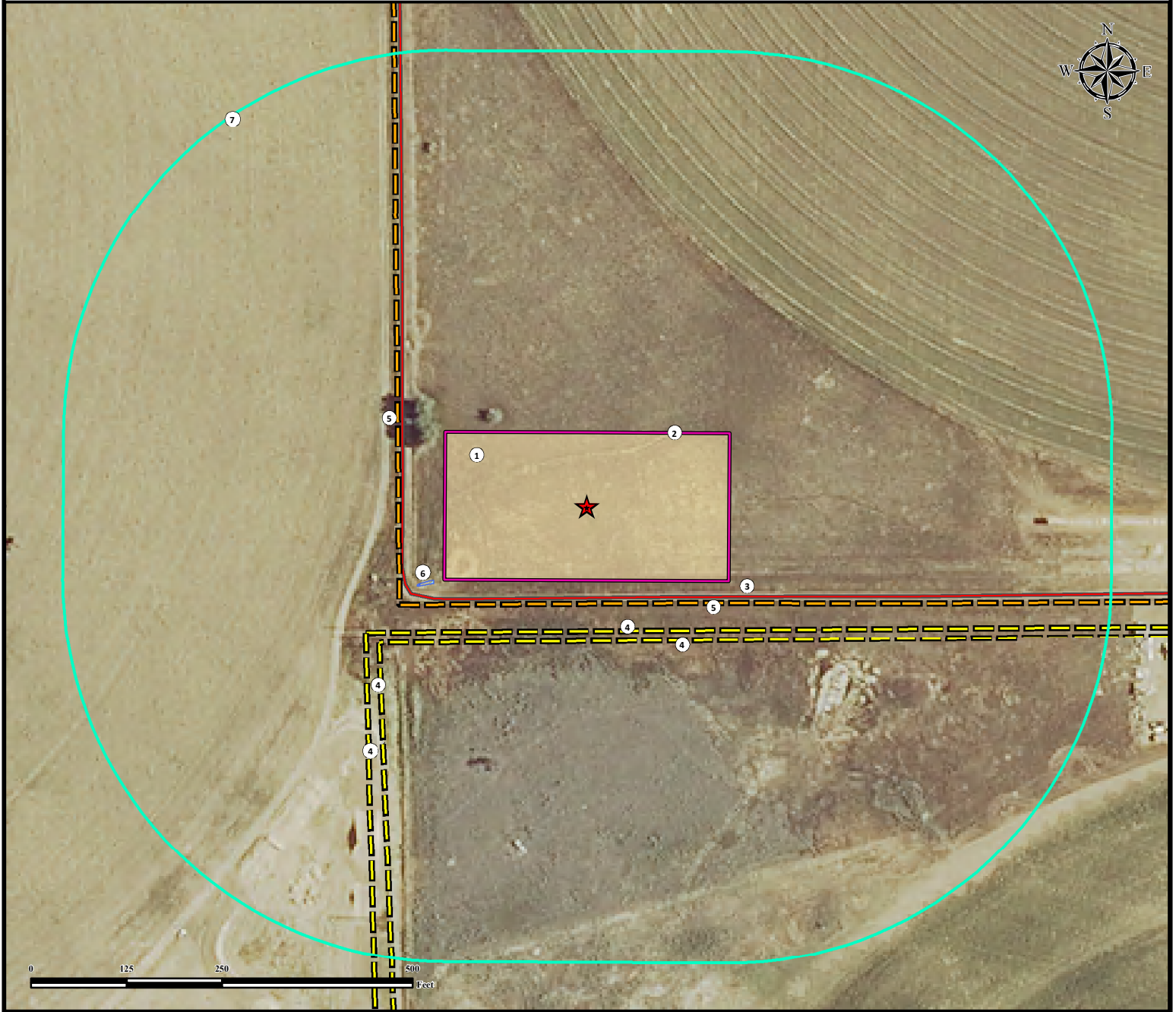


SARCHET 15N-20HZ FACILITY LOCATION DRAWING



** All measurements are made from nearest facility edge **

1. Proposed SARCHET 15N-20HZ FACILITY.
2. Operational Disturbance Area.
3. Private Road is $\pm 20'$ S.
4. Powerlines are $\pm 64'$ S, $\pm 77'$ S, $\pm 119'$ SW, and $\pm 125'$ SW.
5. Fences are $\pm 28'$ S and $\pm 60'$ W.
6. Catch Basin is $\pm 14'$ W.
7. 500' Radius.

Legend

- | | | | |
|---|-------------------|---|--------------|
|  | Proposed Facility |  | Private Road |
|  | Disturbance Area |  | Powerline |
|  | 500' Radius |  | Fence |
|  | Catch Basin | | |

Reference Location



Lat: 40.124465° Long: -104.687048° (NAD83)
Elevation: 4927 Feet
FNL: 2540 FEL: 2414

Surface Use: Irrigated Crop

Nearest Building Unit: >1000' NW



FIELD DATE:
11-05-14

DRAWING DATE:
03-05-15

BY:
DRF

CHECKED BY:
CSG

SITE NAME:
SARCHET 15N-20HZ FACILITY

SURFACE LOCATION:
SW1/4 NE1/4, SEC. 20, T2N, R65W, 6TH P.M.
WELD COUNTY, COLORADO

PREPARED FOR:



**KERR-MCGEE OIL
& GAS ONSHORE LP**