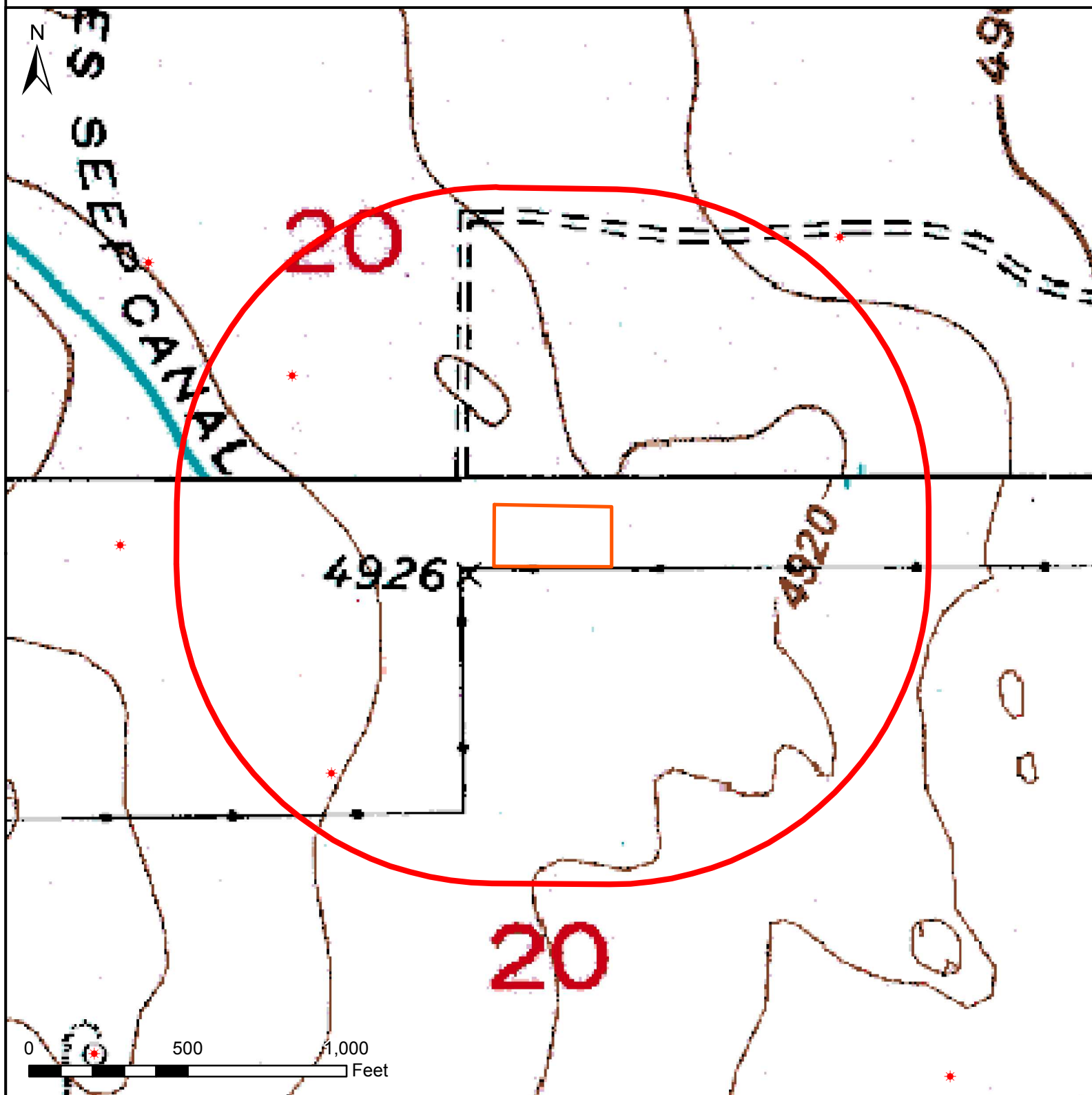


HYDROLOGY MAP

SARCHET 15N-20HZ FACILITY






Nearest Surface Water Feature

Canal: 915' W Elev: 4933'
Loc Elev: 4927'

All measurements are made from
edge of disturbed area.

Legend

-  1000' buffer
-  Well pad (proposed)
-  Existing oil/gas well (COGCC)



Date created: 6/3/2015
Created by: APC Regulatory GIS
Scale: 1:5,000
Projection: NAD83 UTM 13N