

BONANZA CREEK OIL COMPANY

Location: COLORADO Slot: SLOT#07 STATE ANTELOPE 24-1-36XRLNB (358'FSL & 1411'FWL, SEC.01)
 Field: WELD COUNTY Well: STATE ANTELOPE 24-1-36XRLNB
 Facility: SEC.01-T5N-R62W Wellbore: STATE ANTELOPE 24-1-36XRLNB PWB

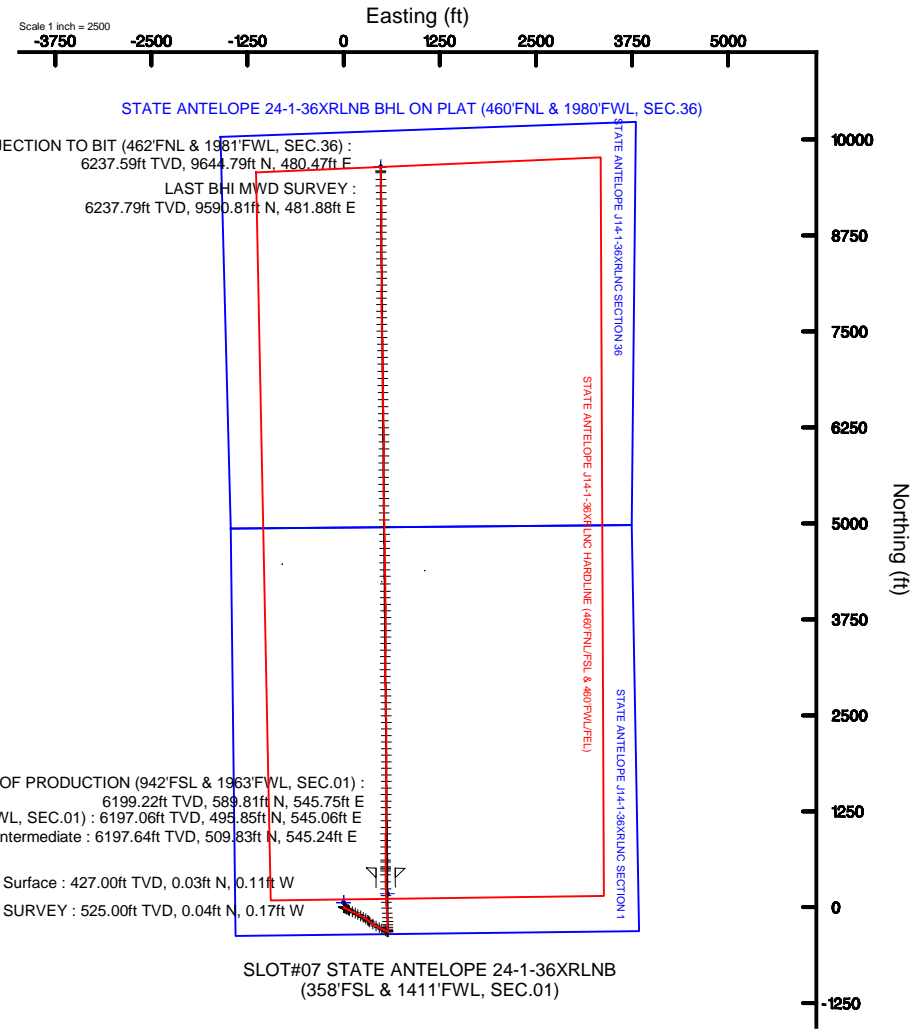
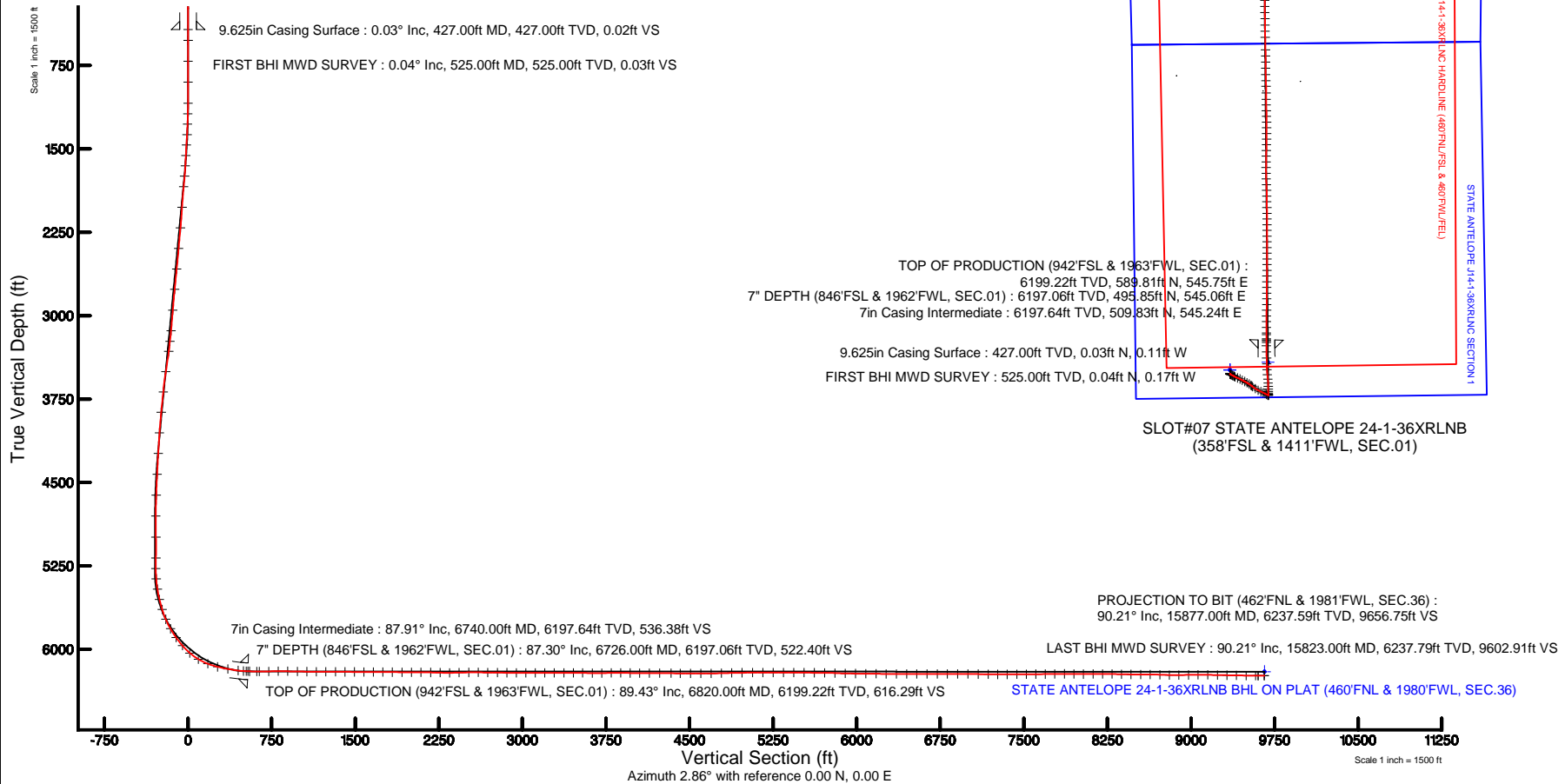
Plot reference wellpath is STATE ANTELOPE 24-1-36XRLNB PWP (REV-A.0)

True vertical depths are referenced to RIG (17KB) (RKB)	Grid System: NAD83 / Lambert Colorado SP, Northern Zone (501), US feet
Measured depths are referenced to RIG (17KB) (RKB)	North Reference: True north
RIG (17KB) (RKB) to Mean Sea Level: 4686 feet	Scale: True distance
Mean Sea Level to Mud line (At Slot: SLOT#07 STATE ANTELOPE 24-1-36XRLNB (358'FSL & 1411'FWL, SEC.01)): 0 feet	Depths are in feet
Coordinates are in feet referenced to Slot	Created by: ingnjamr on 6/24/2015



BGGM (1945.0 to 2016.0) Dip: 67.01° Field: 52684.3 nT
 Magnetic North is 8.21 degrees East of True North (at 3/2/2015)

To correct azimuth from Magnetic to True add 8.21 degrees





Actual Wellpath Report

STATE ANTELOPE 24-1-36XRLNB AWP

Page 1 of 9



REFERENCE WELLPATH IDENTIFICATION

Operator	BONANZA CREEK OIL COMPANY	Slot	SLOT#07 STATE ANTELOPE 24-1-36XRLNB (358'FSL & 1411'FWL, SEC.01)
Area	COLORADO	Well	STATE ANTELOPE 24-1-36XRLNB
Field	WELD COUNTY	Wellbore	STATE ANTELOPE 24-1-36XRLNB AWB
Facility	SEC.01-T5N-R62W		

REPORT SETUP INFORMATION

Projection System	NAD83 / Lambert Colorado SP, Northern Zone (501), US feet	Software System	WellArchitect® 4.1.1
North Reference	True	User	Ingmjamr
Scale	0.999961	Report Generated	6/24/2015 at 8:52:38 AM
Convergence at slot	0.79° East	Database/Source file	Denver/STATE_ANTELOPE_24-1-36XRLNB_AWB.xml

WELLPATH LOCATION

	Local coordinates		Grid coordinates		Geographic coordinates	
	North[ft]	East[ft]	Easting[US ft]	Northing[US ft]	Latitude	Longitude
Slot Location	-4470.12	799.08	3340863.91	1399562.04	40°25'25.464"N	104°16'32.340"W
Facility Reference Pt			3340003.37	1404020.55	40°26'09.636"N	104°16'42.672"W
Field Reference Pt			3335925.10	1457282.25	40°34'56.460"N	104°17'26.016"W

WELLPATH DATUM

Calculation method	Minimum curvature	RIG (17'KB) (RKB) to Facility Vertical Datum	4686.00ft
Horizontal Reference Pt	Slot	RIG (17'KB) (RKB) to Mean Sea Level	4686.00ft
Vertical Reference Pt	RIG (17'KB) (RKB)	RIG (17'KB) (RKB) to Mud Line at Slot (SLOT#07 STATE ANTELOPE 24-1-36XRLNB (358'FSL & 1411'FWL, SEC.01))	4686.00ft
MD Reference Pt	RIG (17'KB) (RKB)	Section Origin	N 0.00, E 0.00 ft
Field Vertical Reference	Mean Sea Level	Section Azimuth	2.86°



Actual Wellpath Report

STATE ANTELOPE 24-1-36XRLNB AWP
Page 2 of 9



REFERENCE WELLPATH IDENTIFICATION

Operator	BONANZA CREEK OIL COMPANY	Slot	SLOT#07 STATE ANTELOPE 24-1-36XRLNB (358'FSL & 1411'FWL, SEC.01)
Area	COLORADO	Well	STATE ANTELOPE 24-1-36XRLNB
Field	WELD COUNTY	Wellbore	STATE ANTELOPE 24-1-36XRLNB AWB
Facility	SEC.01-T5N-R62W		

WELLPATH DATA (157 stations) † = interpolated/extrapolated station

MD [ft]	Inclination [°]	Azimuth [°]	TVD [ft]	Vert Sect [ft]	North [ft]	East [ft]	DLS [°/100ft]	Comments
0.00†	0.000	282.800	0.00	0.00	0.00	0.00	0.00	
17.00	0.000	282.800	17.00	0.00	0.00	0.00	0.00	
525.00	0.040	282.800	525.00	0.03	0.04	-0.17	0.01	FIRST BHI MWD SURVEY
713.00	0.180	241.430	713.00	-0.11	-0.09	-0.50	0.08	
901.00	0.040	59.780	901.00	-0.23	-0.20	-0.70	0.12	
1090.00	0.080	207.750	1090.00	-0.31	-0.28	-0.70	0.06	
1185.00	2.490	126.440	1184.97	-1.52	-1.56	0.93	2.61	
1279.00	4.630	120.340	1278.78	-4.40	-4.69	5.84	2.31	
1373.00	6.970	118.050	1372.30	-8.58	-9.29	14.15	2.50	
1468.00	8.880	117.400	1466.38	-14.08	-15.38	25.75	2.01	
1563.00	6.840	115.990	1560.49	-19.34	-21.23	37.35	2.16	
1657.00	7.840	116.080	1653.71	-24.07	-26.50	48.14	1.06	
1751.00	10.630	119.940	1746.49	-30.55	-33.65	61.41	3.04	
1846.00	12.100	118.800	1839.62	-38.89	-42.82	77.73	1.57	
2035.00	11.630	110.560	2024.60	-53.35	-59.06	112.93	0.93	
2225.00	12.630	117.970	2210.36	-67.99	-75.52	149.21	0.97	
2414.00	11.820	116.220	2395.08	-84.44	-93.77	184.82	0.47	
2603.00	12.630	120.680	2579.79	-101.76	-112.86	219.96	0.66	
2791.00	11.900	118.870	2763.50	-119.85	-132.71	254.61	0.44	
2981.00	10.510	119.550	2949.88	-136.23	-150.72	286.84	0.73	
3170.00	8.170	133.180	3136.38	-152.67	-168.41	311.64	1.70	
3265.00	10.590	128.690	3230.10	-162.15	-178.49	323.38	2.66	
3359.00	13.700	124.790	3321.99	-173.10	-190.24	339.26	3.42	
3548.00	15.850	125.640	3504.73	-198.91	-218.06	378.62	1.14	
3736.00	14.780	116.230	3686.08	-222.33	-243.62	421.01	1.44	
3925.00	13.160	116.510	3869.48	-240.53	-263.88	461.89	0.86	
4114.00	10.110	116.570	4054.58	-255.83	-280.91	495.99	1.61	
4302.00	8.360	114.810	4240.14	-267.58	-294.02	523.15	0.94	
4490.00	6.280	119.660	4426.60	-277.33	-304.85	544.49	1.15	
4679.00	5.290	116.020	4614.63	-285.41	-313.78	561.31	0.56	



Actual Wellpath Report

STATE ANTELOPE 24-1-36XRLNB AWP
Page 3 of 9



REFERENCE WELLPATH IDENTIFICATION

Operator	BONANZA CREEK OIL COMPANY	Slot	SLOT#07 STATE ANTELOPE 24-1-36XRLNB (358'FSL & 1411'FWL, SEC.01)
Area	COLORADO	Well	STATE ANTELOPE 24-1-36XRLNB
Field	WELD COUNTY	Wellbore	STATE ANTELOPE 24-1-36XRLNB AWB
Facility	SEC.01-T5N-R62W		

WELLPATH DATA (157 stations) † = interpolated/extrapolated station

MD [ft]	Inclination [°]	Azimuth [°]	TVD [ft]	Vert Sect [ft]	North [ft]	East [ft]	DLS [°/100ft]	Comments
4867.00	0.260	67.250	4802.35	-288.64	-317.42	569.49	2.72	
5056.00	0.880	74.630	4991.34	-288.00	-316.87	571.29	0.33	
5244.00	0.690	116.530	5179.33	-288.00	-317.00	573.69	0.31	
5338.00	0.510	120.500	5273.32	-288.43	-317.46	574.56	0.20	
5432.00	4.060	2.950	5367.25	-285.29	-314.35	575.09	4.60	
5526.00	9.120	354.580	5460.60	-274.58	-303.60	574.56	5.46	
5619.00	13.390	357.130	5551.79	-256.57	-285.50	573.32	4.62	
5713.00	17.010	359.770	5642.49	-232.00	-260.87	572.72	3.92	
5807.00	23.290	0.150	5730.69	-199.68	-228.51	572.72	6.68	
5902.00	29.740	359.850	5815.65	-157.34	-186.12	572.71	6.79	
5995.00	35.020	355.870	5894.17	-107.78	-136.40	570.72	6.12	
6089.00	41.760	355.260	5967.81	-49.91	-78.23	566.19	7.18	
6183.00	49.470	353.940	6033.51	16.51	-11.41	559.82	8.26	
6278.00	58.830	356.290	6089.09	92.73	65.23	553.36	10.05	
6372.00	69.270	359.160	6130.18	176.79	149.56	550.11	11.44	
6466.00	75.900	358.720	6158.29	266.22	239.18	548.44	7.07	
6560.00	80.580	357.900	6177.45	357.93	331.14	545.72	5.05	
6653.00	82.670	0.210	6190.99	449.73	423.13	544.21	3.33	
6702.00	86.270	0.940	6195.71	498.45	471.89	544.70	7.50	
6726.00†	87.304	0.774	6197.06	522.40	495.85	545.06	4.36	7" DEPTH (846'FSL & 1962'FWL, SEC.01)
6757.00	88.640	0.560	6198.16	553.36	526.82	545.42	4.36	
6820.00†	89.431	0.047	6199.22	616.29	589.81	545.75	1.50	TOP OF PRODUCTION (942'FSL & 1963'FWL, SEC.01)
6843.00	89.720	359.860	6199.39	639.26	612.81	545.74	1.50	
6929.00	90.920	0.130	6198.91	725.14	698.81	545.73	1.43	
7014.00	90.830	0.130	6197.61	810.04	783.80	545.92	0.11	
7099.00	88.490	0.760	6198.11	894.96	868.79	546.58	2.85	
7185.00	89.130	1.070	6199.90	980.89	954.76	547.95	0.83	
7270.00	89.130	0.430	6201.19	1065.82	1039.74	549.07	0.75	
7356.00	89.560	0.480	6202.17	1151.74	1125.73	549.75	0.50	
7441.00	90.520	0.320	6202.11	1236.66	1210.73	550.34	1.14	



Actual Wellpath Report

STATE ANTELOPE 24-1-36XRLNB AWP

Page 4 of 9



REFERENCE WELLPATH IDENTIFICATION

Operator	BONANZA CREEK OIL COMPANY	Slot	SLOT#07 STATE ANTELOPE 24-1-36XRLNB (358'FSL & 1411'FWL, SEC.01)
Area	COLORADO	Well	STATE ANTELOPE 24-1-36XRLNB
Field	WELD COUNTY	Wellbore	STATE ANTELOPE 24-1-36XRLNB AWB
Facility	SEC.01-T5N-R62W		

WELLPATH DATA (157 stations)

MD [ft]	Inclination [°]	Azimuth [°]	TVD [ft]	Vert Sect [ft]	North [ft]	East [ft]	DLS [°/100ft]	Comments
7527.00	89.160	0.290	6202.35	1322.57	1296.73	550.80	1.58	
7613.00	89.690	0.880	6203.22	1408.50	1382.72	551.68	0.92	
7698.00	89.630	0.480	6203.72	1493.44	1467.71	552.69	0.48	
7783.00	89.590	359.970	6204.30	1578.34	1552.71	553.02	0.60	
7868.00	89.660	359.760	6204.86	1663.23	1637.70	552.82	0.26	
7954.00	89.720	0.300	6205.32	1749.12	1723.70	552.87	0.63	
8039.00	89.840	359.630	6205.65	1834.01	1808.70	552.81	0.80	
8125.00	88.910	0.280	6206.59	1919.89	1894.70	552.75	1.32	
8211.00	89.560	0.020	6207.73	2005.79	1980.69	552.97	0.81	
8296.00	89.900	0.390	6208.13	2090.70	2065.69	553.28	0.59	
8382.00	89.750	359.920	6208.40	2176.60	2151.68	553.51	0.57	
8467.00	87.570	0.850	6210.39	2261.49	2236.65	554.08	2.79	
8552.00	90.950	359.520	6211.48	2346.38	2321.63	554.35	4.27	
8638.00	91.300	359.170	6209.79	2432.20	2407.61	553.37	0.58	
8725.00	90.710	358.770	6208.27	2518.99	2494.58	551.81	0.82	
8811.00	89.470	359.340	6208.13	2604.79	2580.57	550.39	1.59	
8896.00	89.340	359.550	6209.02	2689.64	2665.56	549.56	0.29	
8984.00	89.380	358.580	6210.00	2777.44	2753.54	548.13	1.10	
9068.00	88.950	357.780	6211.22	2861.15	2837.49	545.46	1.08	
9153.00	89.440	358.800	6212.42	2945.87	2922.44	542.93	1.33	
9238.00	90.370	357.970	6212.56	3030.61	3007.40	540.53	1.47	
9324.00	89.590	1.170	6212.59	3116.46	3093.39	539.88	3.83	
9409.00	90.620	359.920	6212.43	3201.38	3178.38	540.69	1.91	
9494.00	90.150	1.400	6211.86	3286.32	3263.37	541.67	1.83	
9580.00	89.410	1.890	6212.19	3372.30	3349.34	544.14	1.03	
9665.00	90.000	1.300	6212.63	3457.27	3434.30	546.51	0.98	
9749.00	89.320	0.090	6213.13	3541.21	3518.29	547.53	1.65	
9835.00	89.710	0.310	6213.86	3627.12	3604.29	547.83	0.52	
9920.00	90.240	359.460	6213.89	3712.00	3689.29	547.65	1.18	
10005.00	91.230	0.230	6212.80	3796.87	3774.28	547.42	1.48	



Actual Wellpath Report

STATE ANTELOPE 24-1-36XRLNB AWP

Page 5 of 9



REFERENCE WELLPATH IDENTIFICATION

Operator	BONANZA CREEK OIL COMPANY	Slot	SLOT#07 STATE ANTELOPE 24-1-36XRLNB (358'FSL & 1411'FWL, SEC.01)
Area	COLORADO	Well	STATE ANTELOPE 24-1-36XRLNB
Field	WELD COUNTY	Wellbore	STATE ANTELOPE 24-1-36XRLNB AWB
Facility	SEC.01-T5N-R62W		

WELLPATH DATA (157 stations)

MD [ft]	Inclination [°]	Azimuth [°]	TVD [ft]	Vert Sect [ft]	North [ft]	East [ft]	DLS [°/100ft]	Comments
10091.00	89.190	358.550	6212.49	3882.71	3860.26	546.51	3.07	
10176.00	89.410	358.140	6213.53	3967.44	3945.22	544.05	0.55	
10262.00	89.460	359.580	6214.37	4053.22	4031.20	542.34	1.68	
10348.00	90.550	359.650	6214.37	4139.08	4117.20	541.77	1.27	
10441.00	89.560	359.940	6214.28	4231.95	4210.19	541.43	1.11	
10544.00	89.040	358.490	6215.54	4334.73	4313.17	540.02	1.50	
10626.00	89.320	358.400	6216.71	4416.48	4395.13	537.80	0.36	
10719.00	89.900	357.980	6217.34	4509.17	4488.09	534.86	0.77	
10812.00	90.120	0.360	6217.33	4601.97	4581.07	533.51	2.57	
10905.00	90.550	359.640	6216.78	4694.85	4674.07	533.51	0.90	
10997.00	91.600	359.290	6215.06	4786.67	4766.05	532.65	1.20	
11090.00	91.200	358.940	6212.78	4879.45	4859.01	531.22	0.57	
11183.00	90.770	358.930	6211.18	4972.21	4951.98	529.49	0.46	
11276.00	90.150	358.740	6210.44	5064.98	5044.95	527.60	0.70	
11369.00	90.590	358.710	6209.84	5157.74	5137.93	525.53	0.47	
11461.00	89.960	359.940	6209.40	5249.56	5229.92	524.45	1.50	
11554.00	89.530	359.240	6209.81	5342.41	5322.91	523.78	0.88	
11647.00	89.840	357.960	6210.32	5435.15	5415.88	521.51	1.42	
11739.00	89.900	0.550	6210.53	5526.96	5507.87	520.31	2.82	
11832.00	89.130	0.340	6211.32	5619.87	5600.86	521.03	0.86	
11925.00	90.060	359.730	6211.97	5712.75	5693.86	521.09	1.20	
12018.00	87.560	0.700	6213.91	5805.63	5786.83	521.44	2.88	
12111.00	88.490	0.890	6217.11	5898.51	5879.76	522.73	1.02	
12203.00	89.470	1.080	6218.75	5990.44	5971.73	524.31	1.09	
12295.00	89.870	359.470	6219.28	6082.35	6063.73	524.75	1.80	
12387.00	88.790	358.140	6220.35	6174.11	6155.70	522.83	1.86	
12478.00	89.930	357.970	6221.37	6264.78	6246.64	519.75	1.27	
12570.00	89.530	358.790	6221.80	6356.50	6338.60	517.14	0.99	
12662.00	89.900	359.190	6222.26	6448.29	6430.58	515.52	0.59	
12753.00	90.770	358.570	6221.73	6539.06	6521.56	513.74	1.17	



Actual Wellpath Report

STATE ANTELOPE 24-1-36XRLNB AWP

Page 6 of 9



REFERENCE WELLPATH IDENTIFICATION

Operator	BONANZA CREEK OIL COMPANY	Slot	SLOT#07 STATE ANTELOPE 24-1-36XRLNB (358'FSL & 1411'FWL, SEC.01)
Area	COLORADO	Well	STATE ANTELOPE 24-1-36XRLNB
Field	WELD COUNTY	Wellbore	STATE ANTELOPE 24-1-36XRLNB AWB
Facility	SEC.01-T5N-R62W		

WELLPATH DATA (157 stations)

MD [ft]	Inclination [°]	Azimuth [°]	TVD [ft]	Vert Sect [ft]	North [ft]	East [ft]	DLS [°/100ft]	Comments
12845.00	89.190	359.690	6221.76	6630.87	6613.55	512.35	2.11	
12937.00	89.530	359.000	6222.79	6722.69	6705.54	511.30	0.84	
13029.00	90.580	358.980	6222.70	6814.48	6797.52	509.67	1.14	
13121.00	89.870	0.040	6222.34	6906.32	6889.51	508.89	1.39	
13213.00	89.810	359.640	6222.60	6998.19	6981.51	508.63	0.44	
13305.00	89.190	359.340	6223.40	7090.02	7073.51	507.81	0.75	
13396.00	88.910	358.980	6224.91	7180.82	7164.48	506.48	0.50	
13482.00	89.870	358.960	6225.82	7266.62	7250.46	504.93	1.12	
13567.00	90.210	359.000	6225.76	7351.42	7335.45	503.42	0.40	
13653.00	90.090	358.480	6225.54	7437.20	7421.43	501.53	0.62	
13738.00	90.890	357.420	6224.81	7521.89	7506.37	498.49	1.56	
13824.00	90.400	359.660	6223.84	7607.63	7592.33	496.30	2.67	
13910.00	90.270	358.680	6223.34	7693.45	7678.32	495.05	1.15	
13995.00	91.320	358.460	6222.16	7778.20	7763.28	492.93	1.26	
14081.00	89.930	359.910	6221.22	7864.02	7849.26	491.71	2.34	
14167.00	88.790	0.940	6222.18	7949.93	7935.25	492.34	1.79	
14252.00	89.810	0.740	6223.22	8034.87	8020.24	493.59	1.22	
14338.00	91.040	0.490	6222.59	8120.80	8106.23	494.51	1.46	
14424.00	90.330	0.800	6221.56	8206.73	8192.22	495.48	0.90	
14509.00	88.540	358.760	6222.40	8291.60	8277.20	495.16	3.19	
14594.00	88.610	358.460	6224.51	8376.34	8362.15	493.09	0.36	
14680.00	89.250	358.670	6226.12	8462.08	8448.11	490.94	0.78	
14766.00	90.150	358.760	6226.57	8547.85	8534.09	489.01	1.05	
14851.00	89.590	0.350	6226.76	8632.71	8619.08	488.35	1.98	
14939.00	87.490	0.640	6229.00	8720.60	8707.04	489.11	2.41	
15024.00	89.310	0.590	6231.37	8805.50	8792.00	490.02	2.14	
15110.00	90.610	1.110	6231.43	8891.44	8877.99	491.30	1.63	
15196.00	90.000	359.730	6230.98	8977.36	8963.98	491.93	1.75	
15283.00	90.890	359.760	6230.30	9064.23	9050.98	491.54	1.02	
15370.00	89.040	359.370	6230.35	9151.08	9137.97	490.88	2.17	



Actual Wellpath Report

STATE ANTELOPE 24-1-36XRLNB AWP

Page 7 of 9



REFERENCE WELLPATH IDENTIFICATION

Operator	BONANZA CREEK OIL COMPANY	Slot	SLOT#07 STATE ANTELOPE 24-1-36XRLNB (358'FSL & 1411'FWL, SEC.01)
Area	COLORADO	Well	STATE ANTELOPE 24-1-36XRLNB
Field	WELD COUNTY	Wellbore	STATE ANTELOPE 24-1-36XRLNB AWB
Facility	SEC.01-T5N-R62W		

WELLPATH DATA (157 stations)

MD [ft]	Inclination [°]	Azimuth [°]	TVD [ft]	Vert Sect [ft]	North [ft]	East [ft]	DLS [°/100ft]	Comments
15457.00	89.160	358.870	6231.72	9237.89	9224.95	489.55	0.59	
15543.00	88.380	359.020	6233.57	9323.66	9310.92	487.96	0.92	
15628.00	89.350	358.480	6235.25	9408.43	9395.88	486.11	1.31	
15714.00	88.640	359.110	6236.76	9494.20	9481.84	484.30	1.10	
15799.00	89.930	358.480	6237.82	9578.98	9566.82	482.51	1.69	
15823.00	90.210	358.500	6237.79	9602.91	9590.81	481.88	1.17	LAST BHI MWD SURVEY
15877.00	90.210	358.500	6237.59	9656.75	9644.79	480.47	0.00	PROJECTION TO BIT (462'FNL & 1981'FWL, SEC.36)

HOLE & CASING SECTIONS -

Ref Wellbore: STATE ANTELOPE 24-1-36XRLNB AWB Ref Wellpath: STATE ANTELOPE 24-1-36XRLNB AWP

String/Diameter	Start MD [ft]	End MD [ft]	Interval [ft]	Start TVD [ft]	End TVD [ft]	Start N/S [ft]	Start E/W [ft]	End N/S [ft]	End E/W [ft]
13.5in Open Hole	17.00	427.00	410.00	17.00	427.00	0.00	0.00	0.03	-0.11
9.625in Casing Surface	17.00	427.00	410.00	17.00	427.00	0.00	0.00	0.03	-0.11
8.75in Open Hole	427.00	6750.00	6323.00	427.00	6197.97	0.03	-0.11	519.83	545.35
7in Casing Intermediate	17.00	6740.00	6723.00	17.00	6197.64	0.00	0.00	509.83	545.24
6.125in Open Hole	6750.00	15877.00	9127.00	6197.97	6237.59	519.83	545.35	9644.79	480.47



Actual Wellpath Report

STATE ANTELOPE 24-1-36XRLNB AWP

Page 8 of 9



REFERENCE WELLPATH IDENTIFICATION

Operator	BONANZA CREEK OIL COMPANY	Slot	SLOT#07 STATE ANTELOPE 24-1-36XRLNB (358'FSL & 1411'FWL, SEC.01)
Area	COLORADO	Well	STATE ANTELOPE 24-1-36XRLNB
Field	WELD COUNTY	Wellbore	STATE ANTELOPE 24-1-36XRLNB AWB
Facility	SEC.01-T5N-R62W		

TARGETS

Name	TVD [ft]	North [ft]	East [ft]	Grid East [US ft]	Grid North [US ft]	Latitude	Longitude	Shape
STATE ANTELOPE J14-1-36XRLNC SECTION 1	0.00	61.93	0.00	3340863.06	1399623.97	40°25'26.076"N	104°16'32.340"W	polygon
STATE ANTELOPE J14-1-36XRLNC SECTION 36	0.00	61.93	0.00	3340863.06	1399623.97	40°25'26.076"N	104°16'32.340"W	polygon
STATE ANTELOPE 24-1-36XRLNB BHL ON PLAT (460'FNL & 1980'FWL, SEC.36)	6201.00	9647.06	481.49	3341212.14	1409214.44	40°27'00.792"N	104°16'26.112"W	point
STATE ANTELOPE 24-1-36XRLNB TARGET 1	6201.00	178.52	567.98	3341429.35	1399748.38	40°25'27.228"N	104°16'24.996"W	point
STATE ANTELOPE J14-1-36XRLNC HARDLINE (460'FNL/FSL & 460'FWL/FEL)	6288.00	61.93	0.00	3340863.06	1399623.97	40°25'26.076"N	104°16'32.340"W	polygon

WELLPATH COMPOSITION -

Ref Wellbore: STATE ANTELOPE 24-1-36XRLNB AWB				Ref Wellpath: STATE ANTELOPE 24-1-36XRLNB AWP	
Start MD [ft]	End MD [ft]	Positional Uncertainty Model	Log Name/Comment		Wellbore
17.00	6702.00	NaviTrak (MagCorr)	BHI MWD/NAVITRAK (MAGCORR) 8.75" HOLE <525-6702>		STATE ANTELOPE 24-1-36XRLNB AWB
6702.00	15823.00	NaviTrak (MagCorr)	BHI MWD/NAVITRAK (MAGCORR) 6.125" HOLE <6757-15823>		STATE ANTELOPE 24-1-36XRLNB AWB
15823.00	15877.00	Blind Drilling (std)	Projection to bit		STATE ANTELOPE 24-1-36XRLNB AWB



Actual Wellpath Report

STATE ANTELOPE 24-1-36XRLNB AWP

Page 9 of 9



REFERENCE WELLPATH IDENTIFICATION

Operator	BONANZA CREEK OIL COMPANY	Slot	SLOT#07 STATE ANTELOPE 24-1-36XRLNB (358'FSL & 1411'FWL, SEC.01)
Area	COLORADO	Well	STATE ANTELOPE 24-1-36XRLNB
Field	WELD COUNTY	Wellbore	STATE ANTELOPE 24-1-36XRLNB AWB
Facility	SEC.01-T5N-R62W		

WELLPATH COMMENTS

MD [ft]	Inclination [°]	Azimuth [°]	TVD [ft]	Comment
525.00	0.040	282.800	525.00	FIRST BHI MWD SURVEY
6726.00	87.304	0.774	6197.06	7" DEPTH (846'FSL & 1962'FWL, SEC.01)
6820.00	89.431	0.047	6199.22	TOP OF PRODUCTION (942'FSL & 1963'FWL, SEC.01)
15823.00	90.210	358.500	6237.79	LAST BHI MWD SURVEY
15877.00	90.210	358.500	6237.59	PROJECTION TO BIT (462'FNL & 1981'FWL, SEC.36)