

#### NOTES:

- Flare Pit is to be located a min. of 100' from the wellhead.
- Round corners at 35' radius or as needed.
- Contours shown at 2' intervals.

#### GRMR OIL & GAS

HAMILL #19-16D

163' FSL 230' FEL

SE 1/4 SE 1/4, SECTION 19, T5N, R90W, 6th P.M.  
MOFFAT COUNTY, COLORADO

DRAWN BY: J.P.

DATE DRAWN: 10-14-14

SCALE: 1" = 60'

REVISED: 05-29-15 J.M.C.

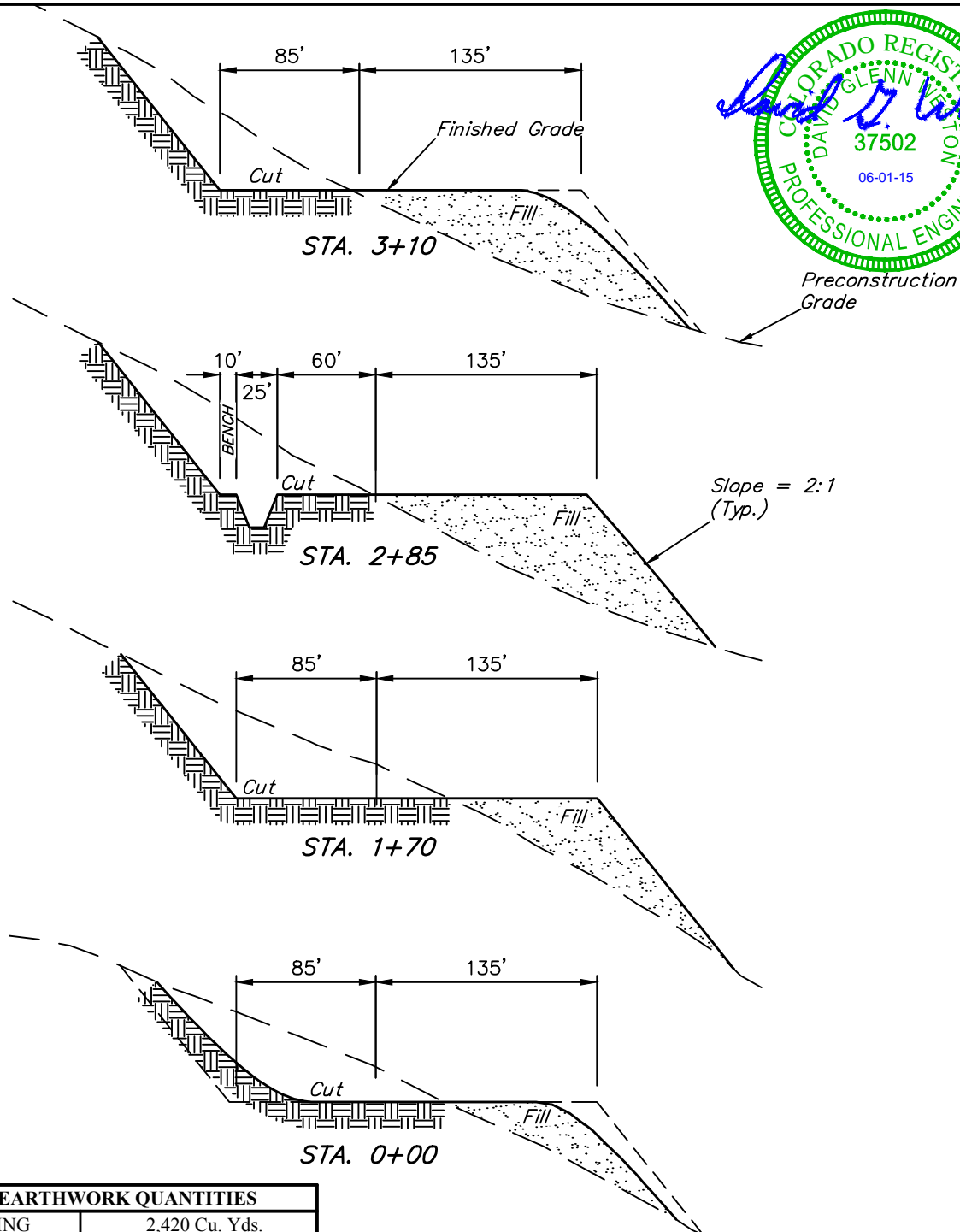
**CONSTRUCTION LAYOUT**

**FIGURE #1**



**UELS, LLC**  
Corporate Office \* 85 South 200 East  
Vernal, UT 84078 \* (435) 789-1017

X-Section  
Scale  
1" = 100'



APPROXIMATE EARTHWORK QUANTITIES	
(6") TOPSOIL STRIPPING	2,420 Cu. Yds.
REMAINING LOCATION	25,100 Cu. Yds.
<b>TOTAL CUT</b>	<b>27,520 Cu. Yds.</b>
<b>FILL</b>	<b>25,000 Cu. Yds.</b>
EXCESS MATERIAL	2,520 Cu. Yds.
TOPSOIL & PIT BACKFILL (1/2 Pit Vol.)	2,520 Cu. Yds.
<b>EXCESS UNBALANCE</b> (After Interim Rehabilitation)	<b>0 Cu. Yds.</b>

APPROXIMATE SURFACE DISTURBANCE AREAS		
	DISTANCE	ACRES
WELL SITE DISTURBANCE	NA	±3.304
30' WIDE ACCESS ROAD R-O-W DISTURBANCE	±3,473'	±2.392
<b>TOTAL SURFACE USE AREA</b>		<b>±5.696</b>

#### NOTES:

- Fill quantity includes 5% for compaction.
- Calculations based on 6" of topsoil stripping.
- Topsoil should not be stripped below finished grade on substructure area.

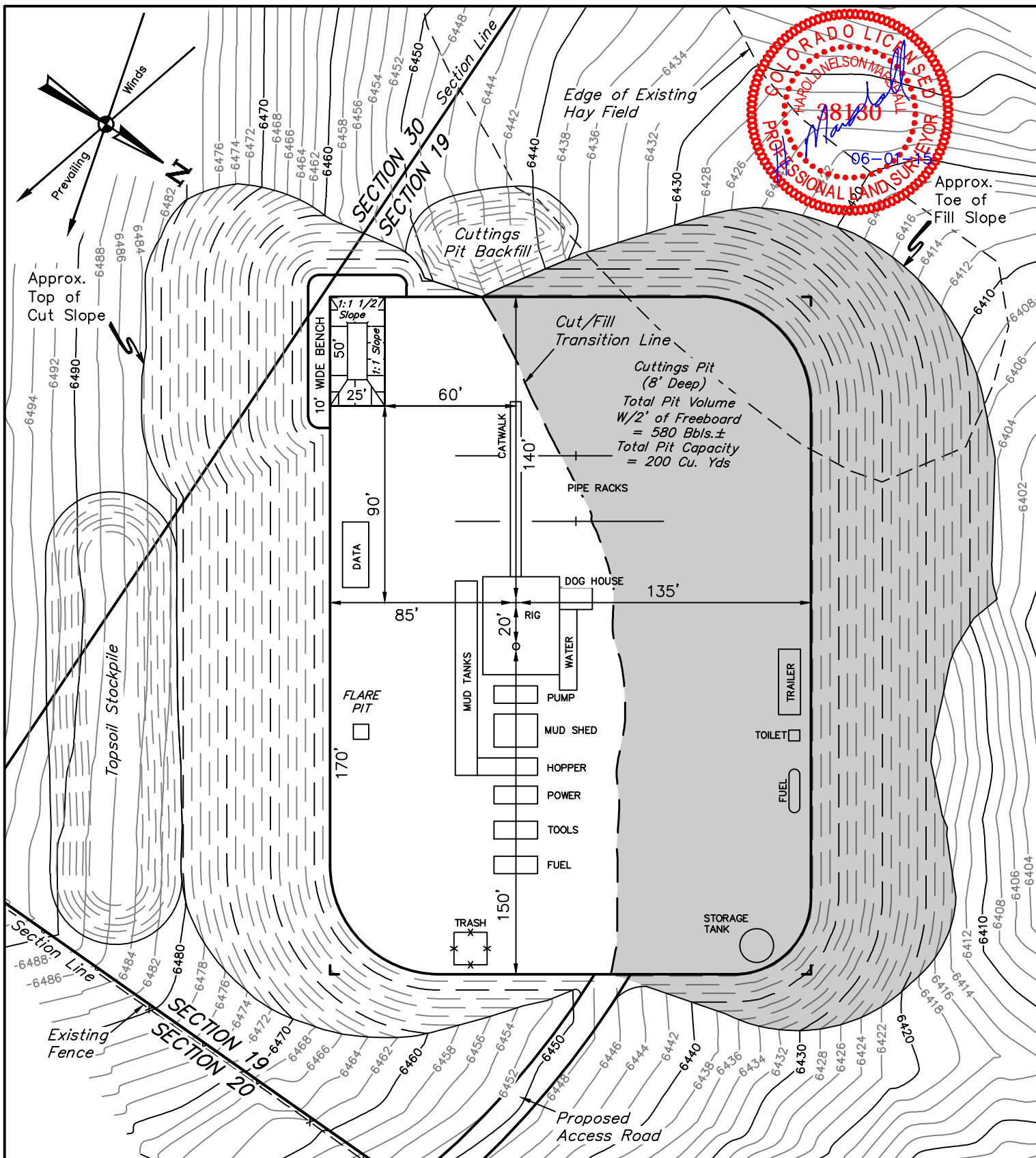
#### GRMR OIL & GAS

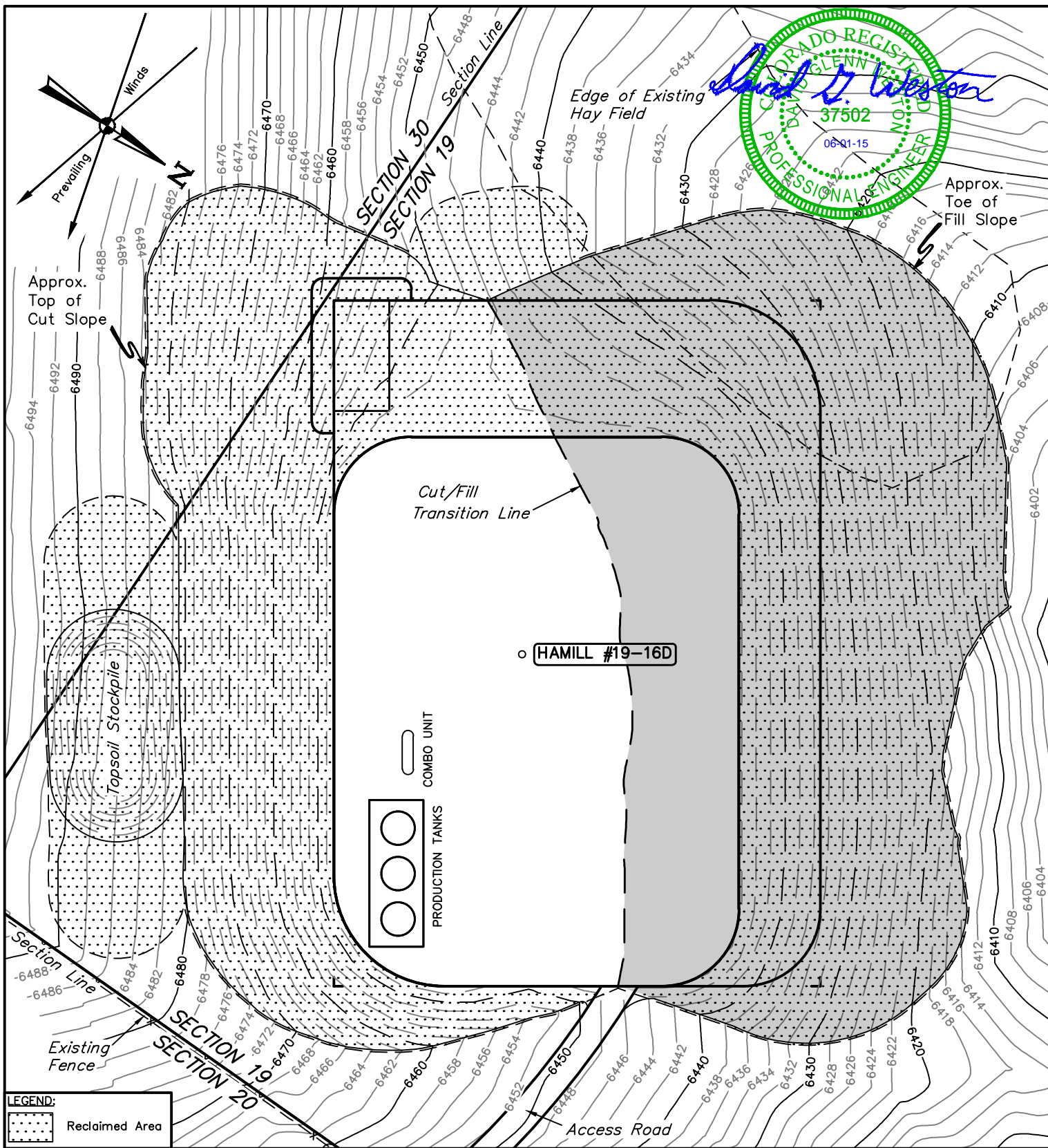
**HAMILL #19-16D**  
**163' FSL 230' FEL**  
**SE 1/4 SE 1/4, SECTION 19, T5N, R90W, 6th P.M.**  
**MOFFAT COUNTY, COLORADO**



**UELS, LLC**  
 Corporate Office \* 85 South 200 East  
 Vernal, UT 84078 \* (435) 789-1017

DRAWN BY: J.P.	DATE DRAWN: 10-14-14
SCALE: AS SHOWN	REVISED: 05-29-15 J.M.C.
<b>CONSTRUCTION LAYOUT CROSS SECTIONS</b>	<b>FIGURE #2</b>





**COLORADO REGISTERED PROFESSIONAL ENGINEER**  
 DANN GLENN  
 37502  
 06-01-15

*Dann Glenn*

## GRMR OIL & GAS

**HAMILL #19-16D**  
**163' FSL 230' FEL**  
**SE 1/4 SE 1/4, SECTION 19, T5N, R90W, 6th P.M.**  
**MOFFAT COUNTY, COLORADO**

DRAWN BY: J.P.

DATE DRAWN: 10-14-14

SCALE: 1" = 60'

REVISED: 05-29-15 J.M.C.

**INTERIM RECLAMATION PLAN**

**FIGURE #4**



**UELS, LLC**  
 Corporate Office \* 85 South 200 East  
 Vernal, UT 84078 \* (435) 789-1017