

PLANT COMMUNITY	
<input checked="" type="checkbox"/>	DISTURBED GRASSLAND
<input checked="" type="checkbox"/>	NATIVE GRASSLAND
<input checked="" type="checkbox"/>	SHRUB LAND
<input type="checkbox"/>	PLAINS RIPARIAN
<input type="checkbox"/>	MOUNTAIN RIPARIAN
<input type="checkbox"/>	FOREST LAND
<input type="checkbox"/>	WETLANDS AQUATIC
<input type="checkbox"/>	ALPINE
<input type="checkbox"/>	OTHER (Describe):


CURRENT LAND USE					
CROP LAND:	<input type="checkbox"/> IRRIGATED	<input type="checkbox"/> DRY LAND	<input type="checkbox"/> IMPROVED PASTURE	<input type="checkbox"/> HAY MEADOW	<input type="checkbox"/> CRP
NON-CROP LAND:	<input checked="" type="checkbox"/> RANGELAND	<input type="checkbox"/> TIMBER	<input type="checkbox"/> RECREATIONAL	<input type="checkbox"/> OTHER (Describe)	
SUBDIVIDED:	<input type="checkbox"/> INDUSTRIAL	<input type="checkbox"/> COMMERCIAL	<input type="checkbox"/> RESIDENTIAL		

FUTURE LAND USE					
CROP LAND:	<input type="checkbox"/> IRRIGATED	<input type="checkbox"/> DRY LAND	<input type="checkbox"/> IMPROVED PASTURE	<input type="checkbox"/> HAY MEADOW	<input type="checkbox"/> CRP
NON-CROP LAND:	<input checked="" type="checkbox"/> RANGELAND	<input type="checkbox"/> TIMBER	<input type="checkbox"/> RECREATIONAL	<input type="checkbox"/> OTHER (Describe)	
SUBDIVIDED:	<input type="checkbox"/> INDUSTRIAL	<input type="checkbox"/> COMMERCIAL	<input type="checkbox"/> RESIDENTIAL		

GRMR OIL & GAS

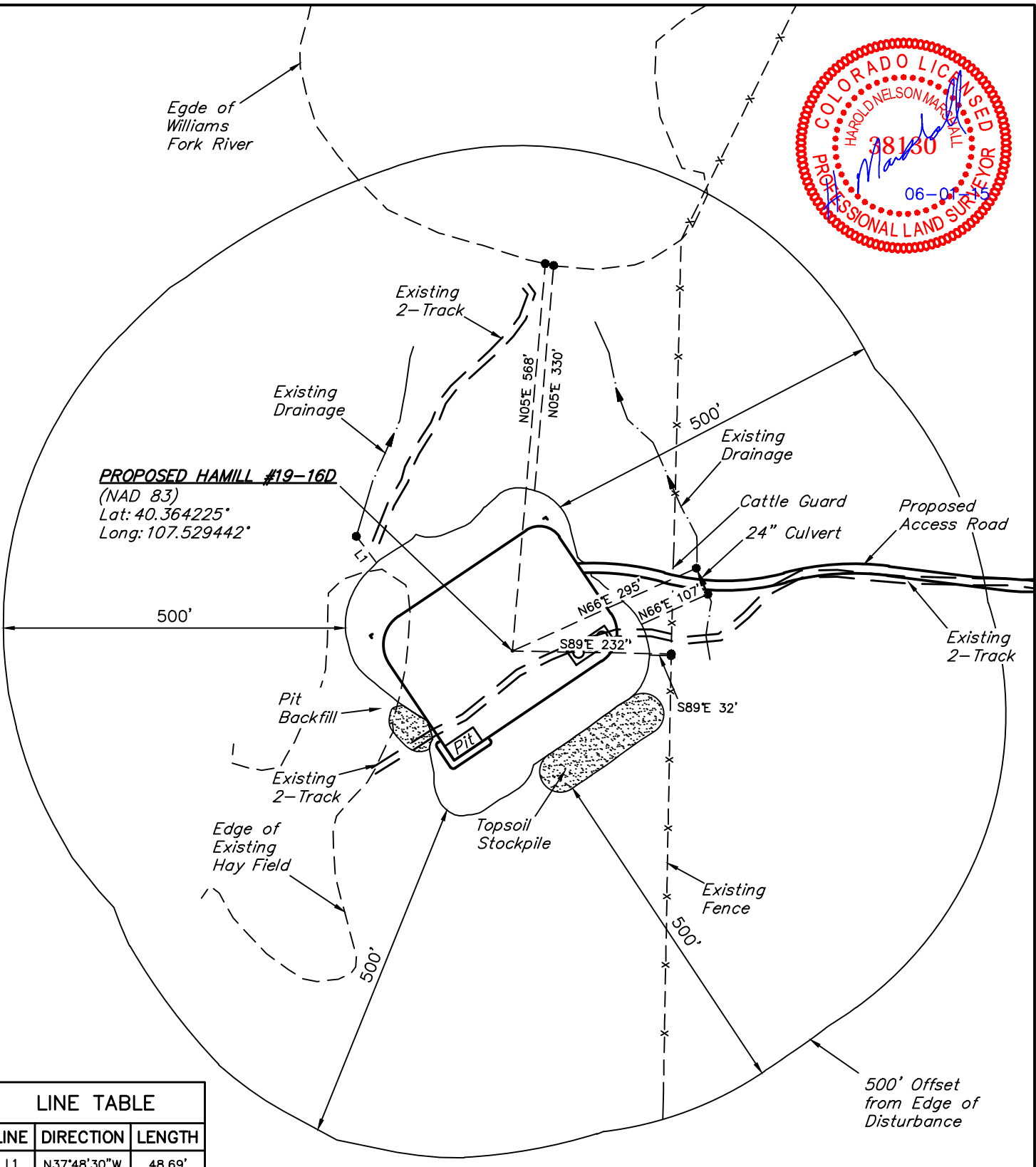
HAMILL #19-16D
163' FSL 230' FEL
SE 1/4 SE 1/4, SECTION 19, T5N, R90W, 6th P.M.
MOFFAT COUNTY, COLORADO

SURVEYED BY: GLENN MCELROY		SURVEY DATE: 10-03-14	
DRAWN BY: J.P.		DATE DRAWN: 10-14-14	
SCALE: 1" = 500'		REVISED: 05-29-15 J.M.C.	
LOCATION DRAWING		FIGURE #5	


UELS, LLC
 Corporate Office * 85 South 200 East
 Vernal, UT 84078 * (435) 789-1017



Edge of Williams Fork River



LINE TABLE		
LINE	DIRECTION	LENGTH
L1	N37°48'30"W	48.69'

NOTES:

GRMR OIL & GAS

HAMILL #19-16D
163' FSL 230' FEL
SE 1/4 SE 1/4, SECTION 19, T5N, R90W, 6th P.M.
MOFFAT COUNTY, COLORADO



UELS, LLC
Corporate Office * 85 South 200 East
Vernal, UT 84078 * (435) 789-1017

DRAWN BY: J.P.	DATE DRAWN: 10-14-14
SCALE: 1" = 200'	REVISED: 05-29-15 J.M.C.

LOCATION DETAIL DRAWING **FIGURE #5A**

GRMR OIL & GAS

HAMILL #19-16D

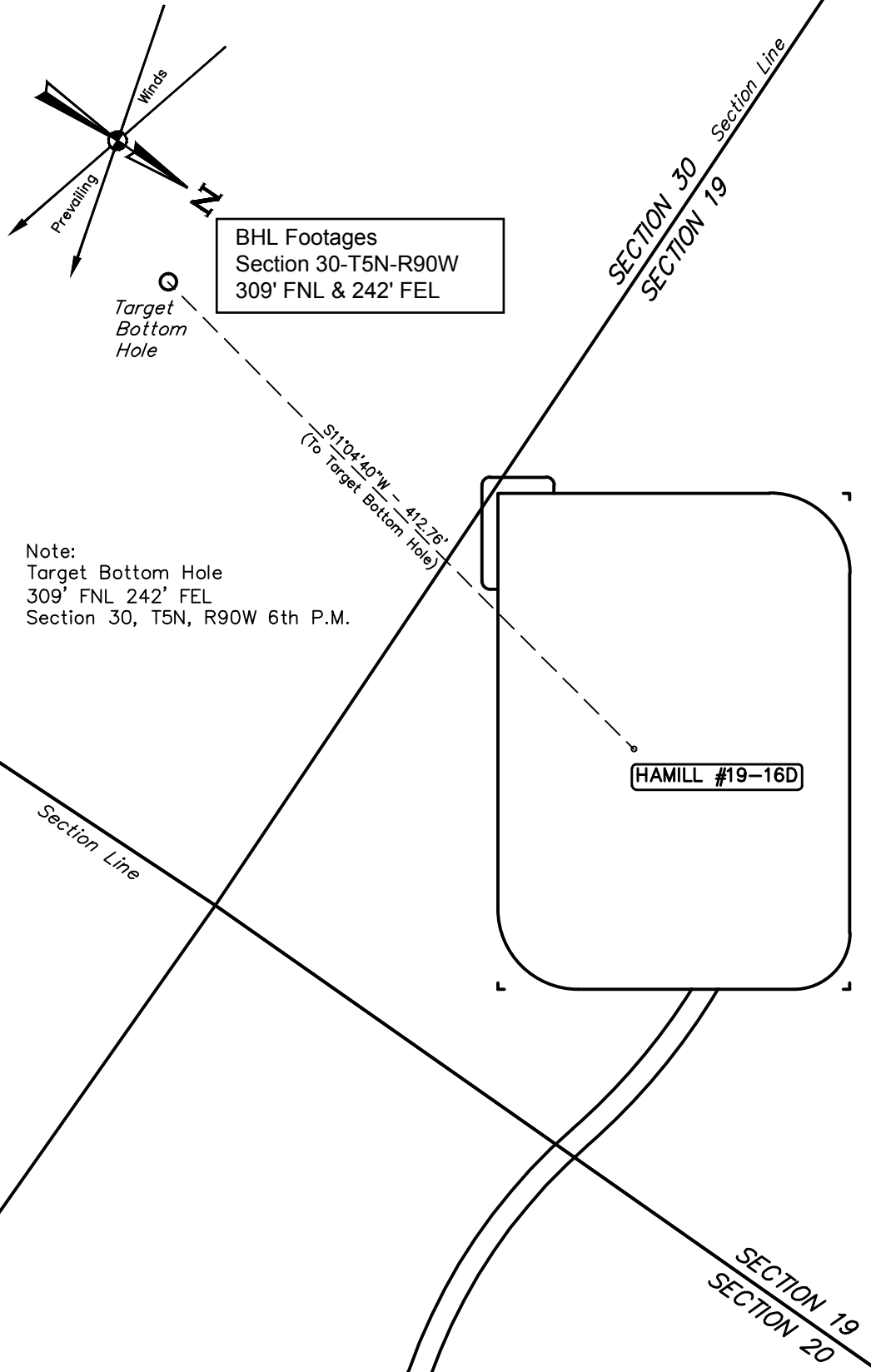
SECTION 19, T5N, R90W, 6th P.M.

DATE: 10-14-14

REVISED: 06-08-15 J.M.C.

DISTANCES FROM WELL HEADS																
WELL NAME	BUILDING		BUILDING UNIT		HIGH OCCU. BUILDING		D.O.A.A.		PUBLIC ROAD		ABOVE GROUND UTILITY		RAILROAD		PROPERTY LINE	
	DIRECTION	LENGTH	DIRECTION	LENGTH	DIRECTION	LENGTH	DIRECTION	LENGTH	DIRECTION	LENGTH	DIRECTION	LENGTH	DIRECTION	LENGTH	DIRECTION	LENGTH
HAMILL #19-16D	N20°W	1708'	N20°W	1789'	OVER 1 MILE		OVER 1 MILE		NORTH	2119'	N9°E	1186'	OVER 1 MILE		S89°E	202'

DISTANCES FROM PRODUCTION AREA																
PRODUCTION FEATURE	BUILDING		BUILDING UNIT		HIGH OCCU. BUILDING		D.O.A.A.		PUBLIC ROAD		ABOVE GROUND UTILITY		RAILROAD		PROPERTY LINE	
	DIRECTION	LENGTH	DIRECTION	LENGTH	DIRECTION	LENGTH	DIRECTION	LENGTH	DIRECTION	LENGTH	DIRECTION	LENGTH	DIRECTION	LENGTH	DIRECTION	LENGTH
PRODUCTION AREA	N23°W	1586'	N23°W	1667'	OVER 1 MILE		OVER 1 MILE		N2°W	1970'	N5°E	1047'	OVER 1 MILE		S90°E	50'



BHL Footages
Section 30-T5N-R90W
309' FNL & 242' FEL

Target
Bottom
Hole

511.04' @ 40°W - 412.76'
(To Target Bottom Hole)

HAMILL #19-16D

Note:
Target Bottom Hole
309' FNL 242' FEL
Section 30, T5N, R90W 6th P.M.

GRMR OIL & GAS

HAMILL #19-16D
163' FSL 230' FEL
SE 1/4 SE 1/4, SECTION 19, T5N, R90W, 6th P.M.
MOFFAT COUNTY, COLORADO



UELS, LLC
Corporate Office * 85 South 200 East
Vernal, UT 84078 * (435) 789-1017

DRAWN BY: J.P.	DATE DRAWN: 10-14-14
SCALE: 1" = 100'	REVISED: 05-29-15 J.M.C.

MULTI-WELL PLAN **FIGURE #6**