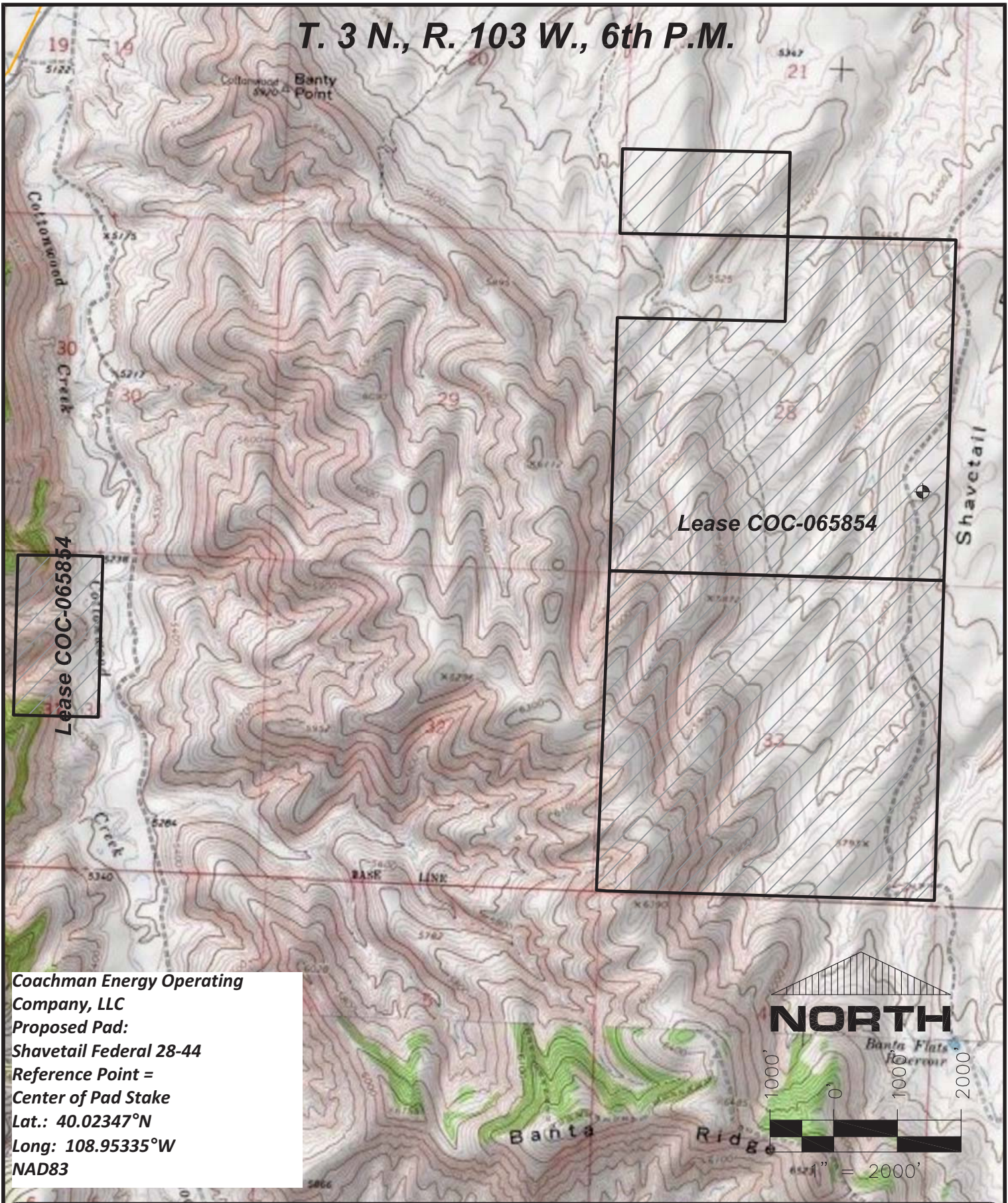


T. 3 N., R. 103 W., 6th P.M.



**Coachman Energy Operating
Company, LLC**
Proposed Pad:
Shavetail Federal 28-44
Reference Point =
Center of Pad Stake
Lat.: 40.02347°N
Long: 108.95335°W
NAD83



SGM INC.
118 W. 6th Street, Suite 200
Glenwood Springs, Colorado 81601
(970)945-1004 www.SGM-Inc.com
Meeker, Colorado (970)878-5180

1" = 2000'

Sheet 5 of 8

28-44

Lease COC-065853 in Sections 21,28,31&33
T.1N., R.103W., 6th P.M., Rio Blanco Co., CO

Job# 2010-112.005

Date: 2/10/12

By: BG

File: 28-44APD