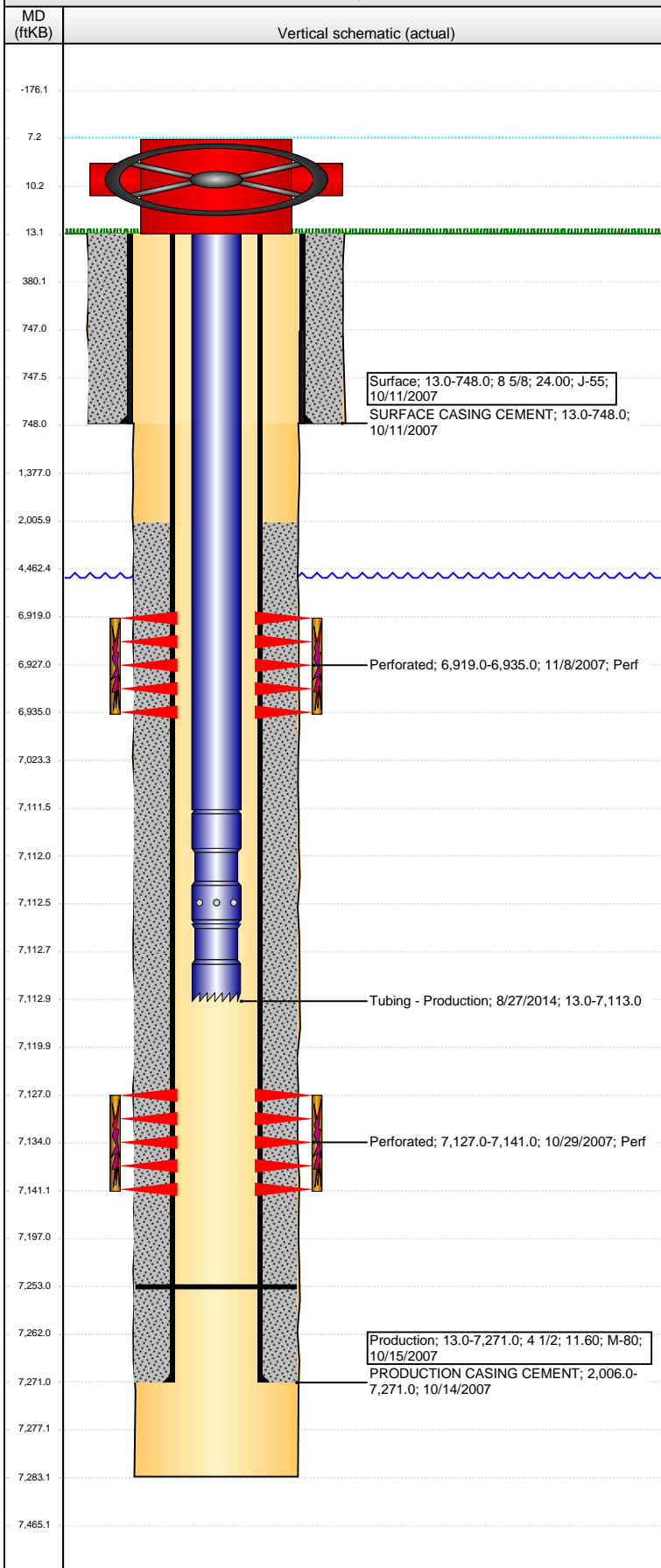


Well Name: MOSER H34-21

DEVIATED - ORIGINAL HOLE, 6/23/2015 10:43:08 AM



Well Header

API 05-123-26310	Business Unit DJ BASIN	District 15	Well Config DEVIATED
Original KB Elevation (ft) 4,843.00	KB - GL / MSL (ftKB) 13.00	Spud Date 10/10/2007	P & A Date
Comment			

Directions To Well

RD 28 & RD 43, SOUTH 50', EAST 4/10, SOUTH INTO ON WEST SIDE DITCH 4/10

Congressional Location

Quarter 1	Quarter 2	Quarter 3	Quarter 4	Section	Township	Twnshp N...	Range	Rng E/W Dir
		SE	NW	34	3	N	65	W

Bottom Hole Location

North-South Distance (ft)	From N or S Line	East-West Distance (ft)	From E or W Line

Plug Back Total Depths

Date	Depth (ftKB)	Method	Com
10/14/2007	7,253.0		

Wellbore Sections

Section Des	Size (in)	Act Top, MD (ftKB)	Act Btm, MD (ftKB)
SURFACE	12 1/4	13.0	748.0
PRODUCTION	7 7/8	748.0	7,283.0

Zone Statuses

Zone Name	Status Date	Status	Fluid Type	Job	Prod Method
NIOBRARA	2/7/2008	PR	Gas	DRILLING/CO...	
CODELL	2/7/2008	PR	Gas	DRILLING/CO...	
CODELL					

Casing Strings

Surface, 748.0ftKB

Casing Description	Run Date	OD (in)	Wt/Len (l...)	Grade	Top, MD (ft...)	MD (ftKB)
Surface	10/11/2007	8 5/8	24.00	J-55	13.0	748.0

Production, 7,271.0ftKB

Casing Description	Run Date	OD (in)	Wt/Len (l...)	Grade	Top, MD (ft...)	MD (ftKB)
Production	10/15/2007	4 1/2	11.60	M-80	13.0	7,271.0

Cement

Description	Top Depth (ftKB)	Bottom Depth (ftKB)
SURFACE CASING CEMENT	13.0	748.0
Description	Top Depth (ftKB)	Bottom Depth (ftKB)
PRODUCTION CASING CEMENT	2,006.0	7,271.0

Tubing Strings

Tubing Description	Run Date	String...	ID (in)	Wt (lb/ft)	Grade	Len (ft)	Set De...
Tubing - Production	7/16/2008	2 3/8	1.995	4.70	J-55	7,090.52	
Tubing Description	Run Date	String...	ID (in)	Wt (lb/ft)	Grade	Len (ft)	Set De...
Tubing - Production	8/27/2014	2 3/8	1.995	4.70	J-55	7,100.00	

Tubing Components

Item Des	OD (in)	Wt (lb/ft)	Grade	Jts	Len (ft)	Btm (ftKB)	Btm (TVD) (ftKB)
Tubing	2 3/8	4.70	J-55	229	7,098.50	7,111.5	
Pump Seating Nipple	2 3/8	1.10	X	1	1.10	7,112.6	
Notched collar	2 3/8	0.00	X	1	0.40	7,113.0	

Perforation Data

Zone	Bnch/St g	Entered Shot Total	Top (ftKB)	Btm (ftKB)	Date
NIOBRARA, ORIGINAL HOLE		64	6,919.00	6,935.00	11/8/2007
CODELL, ORIGINAL HOLE		56	7,127.00	7,141.00	10/29/2007

Stimulations & Treatments

Date	Zone	Primary Job Type
11/8/2007	NIOBRARA, ORIGINAL HOLE	DRILLING/COMPLETION - ORIGINAL
Technical Result	Tech Result Details	Tech Result Note
Success	According to Plan	
Comment		

Well Name: MOSER H34-21

DEVIATED - ORIGINAL HOLE, 6/23/2015 10:43:10 AM

Stimulations & Treatments

Date 11/8/2007	Zone CODELL, ORIGINAL HOLE	Primary Job Type DRILLING/COMPLETION - ORIGINAL
Technical Result Success	Tech Result Details According to Plan	Tech Result Note
Comment		

Other In Hole

Run Date	Des	OD (in)	Top (ftKB)	Btm (ftKB)

Logs

Date	Type	Top, MD (ftKB)	Btm, MD (ftKB)
10/14/2007	Compensated Density	2,600.0	7,283.0
10/14/2007	Induction	738.0	7,283.0
10/25/2007	Cement Bond	1,800.0	7,283.0
11/25/2013	GYRO	12.5	7,000.0

