

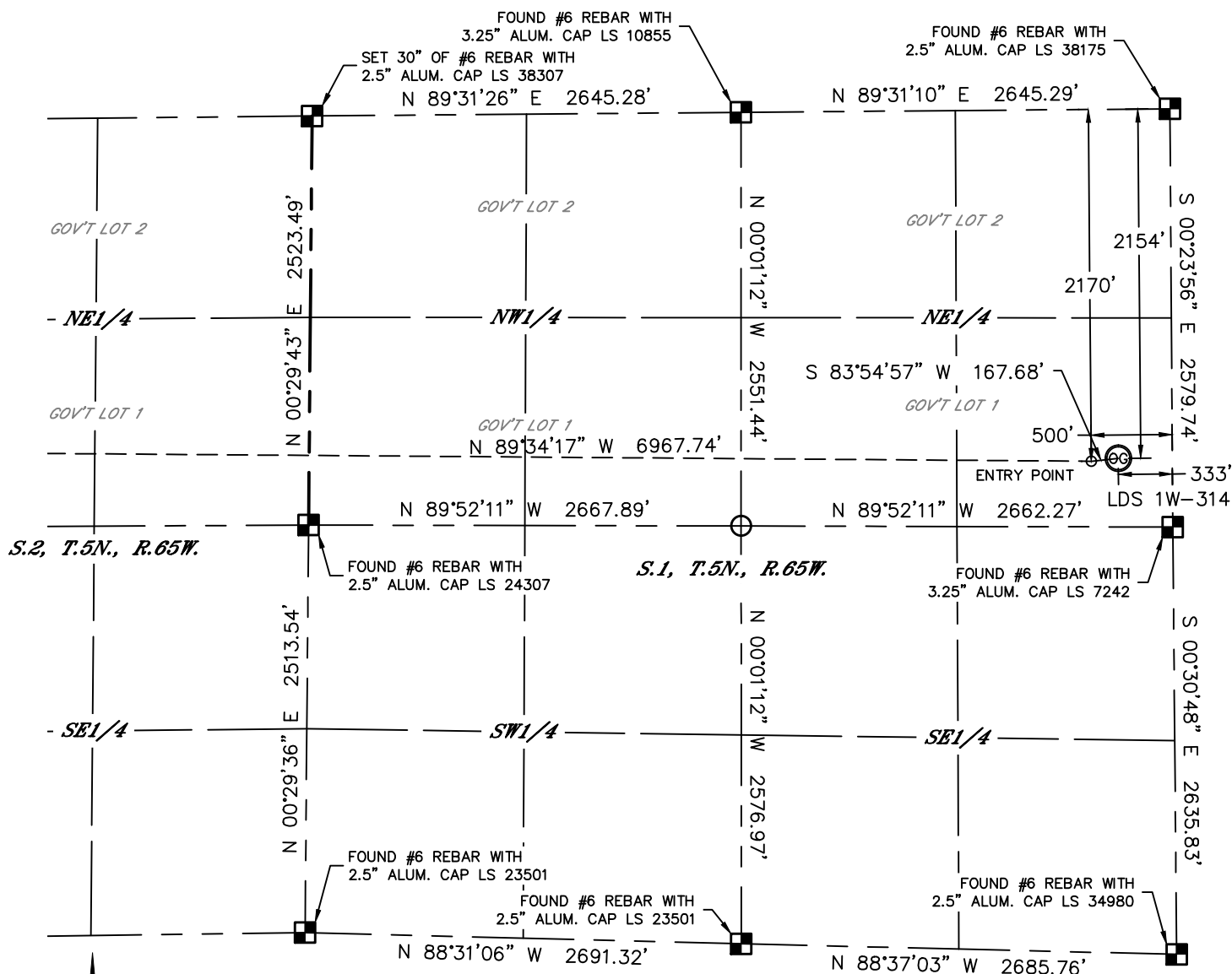


Lat40°, Inc. 1635 Foxtrail Drive, Suite 325 Loveland, CO 970-776-3321

WELL LOCATION CERTIFICATE

THIS MAP DOES NOT REPRESENT A BOUNDARY SURVEY

SECTION: 1
TOWNSHIP: 5N
RANGE: 65W



In accordance with a request from Jake Bragg with PDC ENERGY

Lat40°, Inc. has determined the surface location of the LDS 1W-314 to be 2154' from the NORTH line and 333' from the EAST line as measured at right angles from the section lines of Section 1, Township 5 North, Range 65 West and the bottom hole to be 2055' from the NORTH line and 2144' from the EAST line as measured at right angles from the section lines of Section 2, Township 5 North, Range 65 West of the Sixth Principal Meridian, County of Weld, State of Colorado.

I hereby state that this Well Location Certificate was prepared by me, or under my direct supervision, that the fieldwork was completed on 8/1/2014, for and on behalf of PDC ENERGY. That this is not a Land Survey Plat or an Improvement Survey Plat, and that it is not to be relied upon for establishment of fence, building, or other future improvement lines.

SURFACE LOCATION

LAT: 40.42921°N
LONG: 104.60294°W
PDOP: 2.3
ELEV: 4613'
1/4,1/4: SENE

BOTTOM HOLE

LAT: 40.42949°N
LONG: 104.62856°W

ENTRY POINT

LAT: 40.42916°N
LONG: 104.60354°W

LEGEND

- = ALIQUOT MONUMENT AS DESCRIBED
○ = CALCULATED POSITION

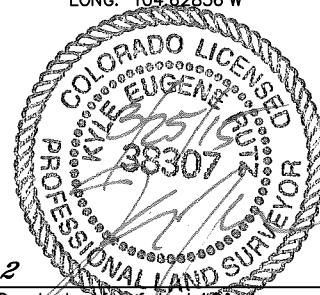
SHEET 1 OF 2

Kyle E. Rutz—On behalf of Lat40°, Inc.
Colorado Licensed Professional
Land Surveyor No. 38307

DATE: 3/23/2015
PROJECT#: 2014140

NOTE:

- 1) Bearings shown are Grid Bearings of the Colorado State Plane Coordinate System, North Zone, North American Datum 1983. The lineal dimensions as contained herein are based upon the "U.S. Survey Foot."
- 2) Ground elevations are based on an observed GPS elevation (NAVD 1988 DATUM).
- 3) IMPROVEMENTS: See LOCATION DRAWING for all visible improvements within 500' of disturbed area.
- 4) SURFACE USE: CROP LAND
- 5) INSTRUMENT OPERATOR: WYATT HALL
- 6) NEAREST CULTURAL ITEMS:
BUILDING: ±450' SE
BUILDING UNIT: ±450' SE
HIGH OCCUPANCY BUILDING UNIT: 5280'+
DESIGNATED OUTSIDE ACTIVITY AREA: 5280'+
PUBLIC ROAD: ±261' E (CR 49)
ABOVEGROUND UTILITY: ±244' E
RAILROAD: 5280'+
PROPERTY LINE: ±333' E

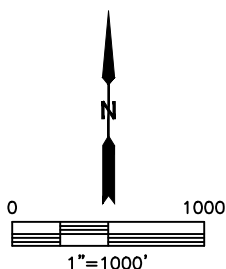
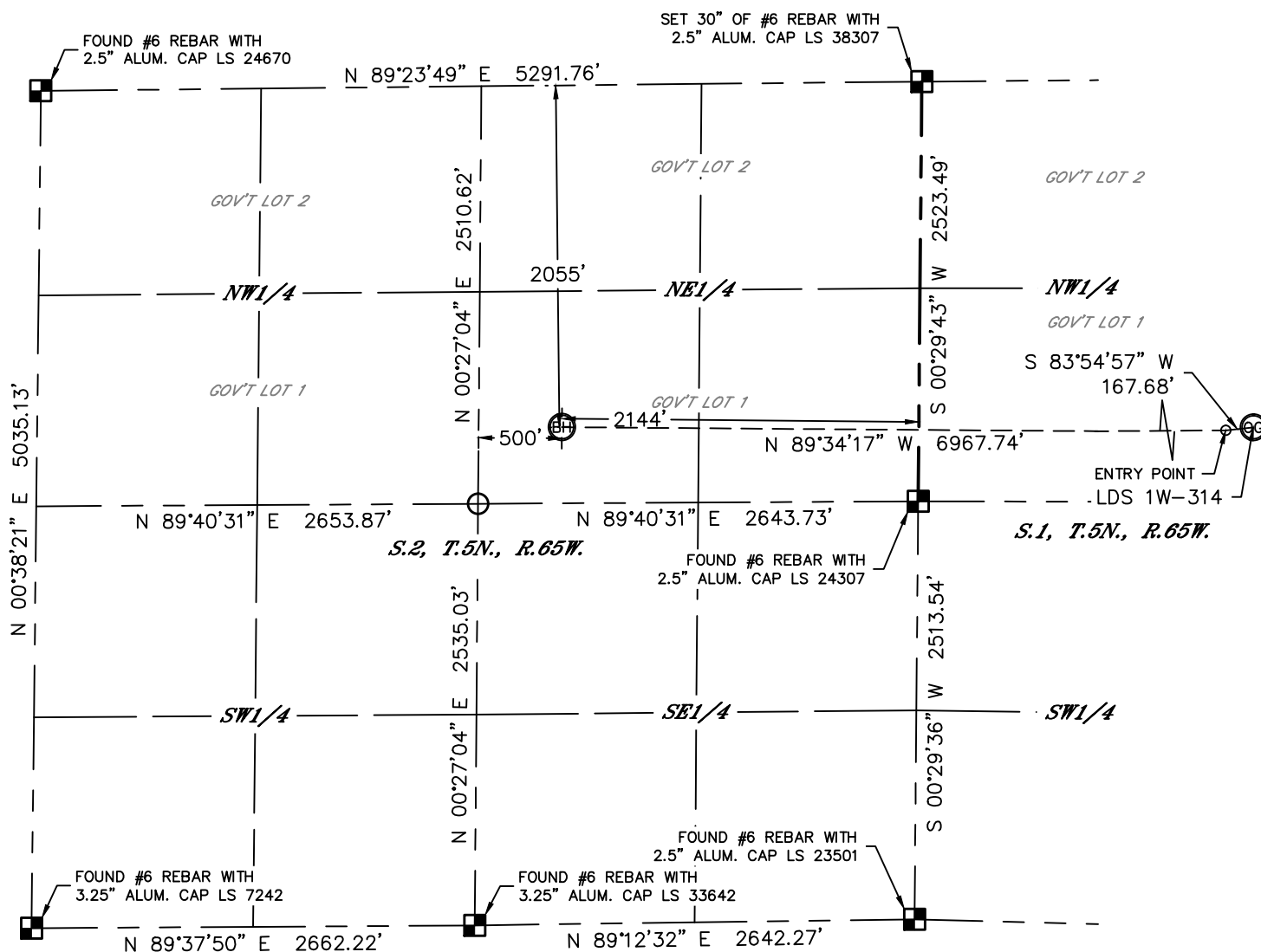


Lat40°, Inc. 1635 Foxtrail Drive, Suite 325 Loveland, CO 970-776-3321


WELL LOCATION CERTIFICATE

THIS MAP DOES NOT REPRESENT A BOUNDARY SURVEY

SECTION: 1
TOWNSHIP: 5N
RANGE: 65W



LEGEND

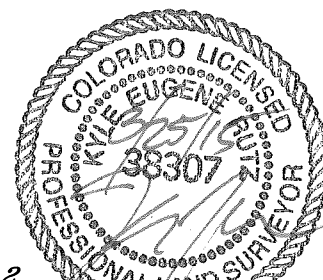
- = ALIQUOT MONUMENT AS DESCRIBED
 = CALCULATED POSITION

SHEET 2 OF 2

Kyle E. Rutz—On behalf of Lot 40, Inc.
Colorado Licensed Professional
Land Surveyor No. 38307

DATE:
PROJECT:

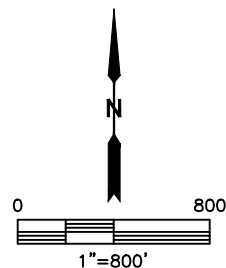
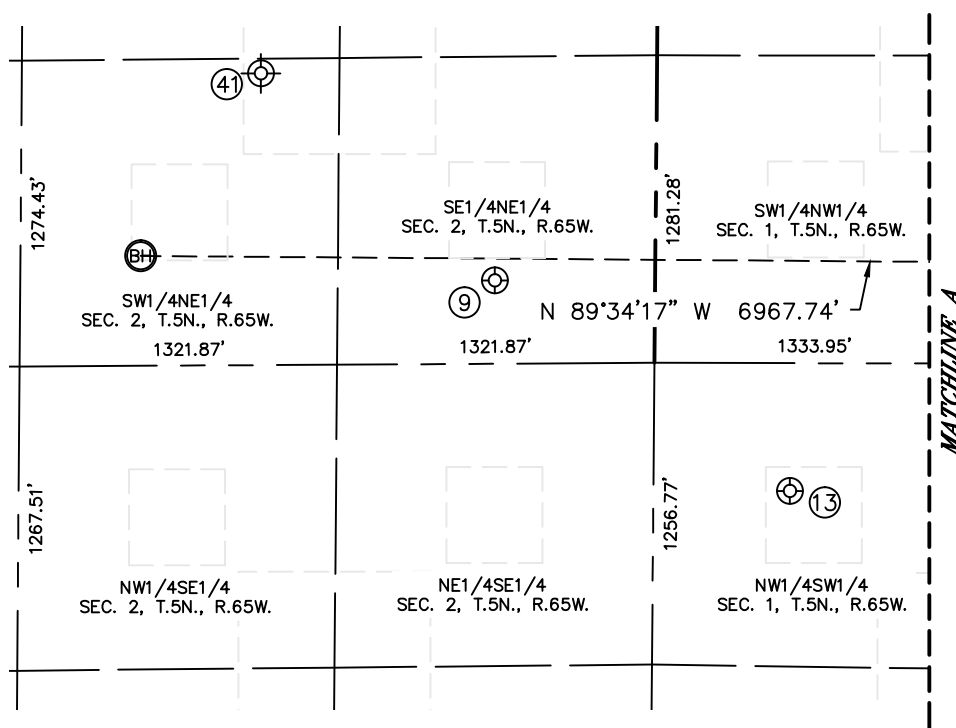
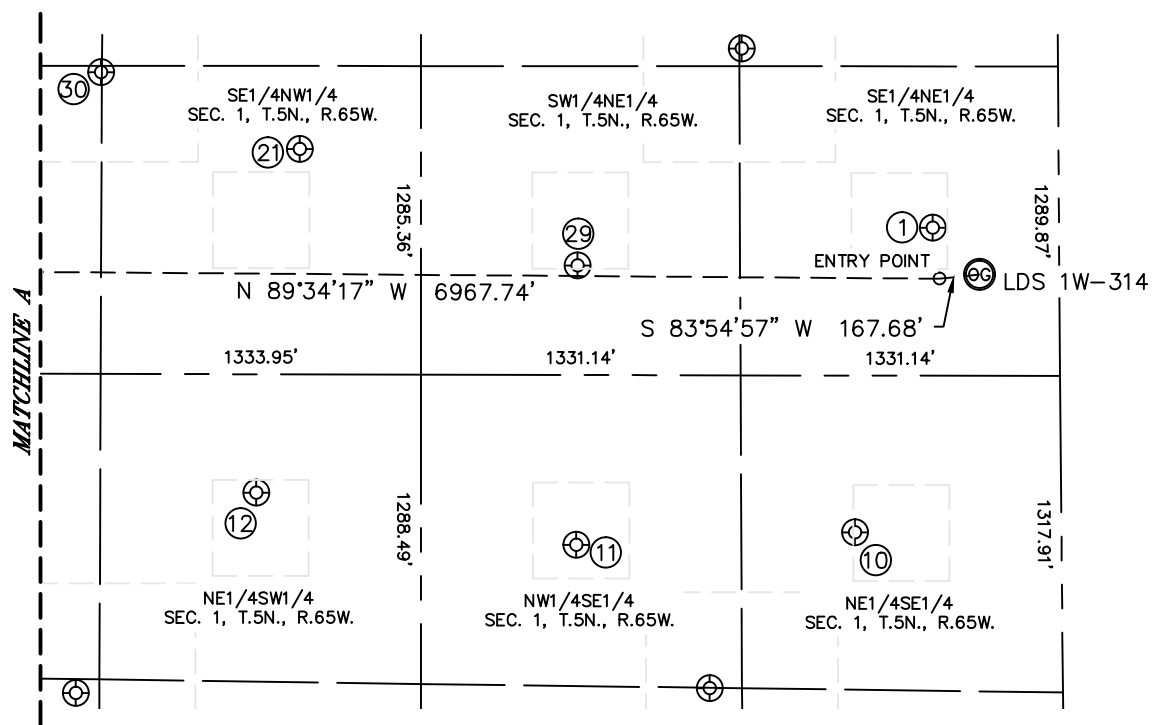
DATE: 3/23/2015
PROJECT#: 2014140



SITE SKETCH

LDS 1W-314

SECTION: 1
TOWNSHIP: 5N
RANGE: 65W



SHEET 1 OF 2

DATE: 3/23/2015
PROJECT#: 2014140



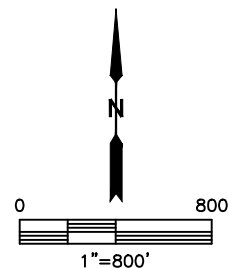
Lat40°, Inc. 1635 Foxtrail Drive, Suite 325 Loveland, CO 970-776-3321

SITE SKETCH

LDS 1W-314

SECTION: 1
TOWNSHIP: 5N
RANGE: 65W

WELL NO.	WELL NAME	SHL FOOTAGE				SHL LAT°	SHL LONG°	PDOP	ELEV (FT.)	1/4/1/4
1	BJB 2	1957	FNL	527	FEL	40.42975	-104.60363	2.2	4614	SENE
9	CARACCIOLI 1	2173	FNL	668	FEL	40.42917	-104.62326	1.9	4644	SENE
10	WELD COUNTY 1-9H5	1963	FSL	860	FEL	40.42627	-104.60484	1.7	4608	NESE
11	CDOT F 1-10	1882	FSL	2023	FEL	40.42616	-104.60902	2.0	4624	NWSE
12	GATEWOOD 11-1	2066	FSL	1986	FWL	40.42679	-104.61379	2.1	4635	NESW
13	GATEWOOD F 1-12	1995	FSL	568	FWL	40.42674	-104.61888	2.0	4637	NWSW
21	GATEWOOD 6-1	1608	FNL	2154	FWL	40.43072	-104.61309	2.5	4636	SENW
29	BJB 3	2103	FNL	2007	FEL	40.42935	-104.60895	1.8	4632	SWNE
30	GATEWOOD 5	1280	FNL	1324	FWL	40.43162	-104.61605	1.7	4639	SWNW
41	WAGNER-EHRLICH 1	1300	FNL	1651	FEL	40.43111	-104.62664	NA	4646	SWNE



SHEET 2 OF 2

DATE: 8/19/2014
PROJECT#: 2014140