

Bayswater Exploration & Production, LLC

Well Name: **Carlson K-15-16HC**

Surface Location: Carlson 15-D Pad Sec.15-T5N-R65W
 North American Datum 1983, US State Plane 1983, Colorado Northern Zone
 Ground Elevation: 4621.0

+N/-S	+E/-W	Northing	Easting	Latitude	Longitude	Slot
0.0	0.0	1065.31	3239126.97	40.403698	-104.641347	

RKB - 22.5' WELL @ 4643.5ft (RKB - 22.5')

WELLBORE TARGET DETAILS

Name	TVD	+N/-S	+E/-W	Shape
SHL 1054'FNL, 384'FEL, SEC.15	1.0	0.0	0.0	Point
BHL 2395'FNL, 2337'FWL, SEC.16	6958.5	-1384.2	-7844.9	Point



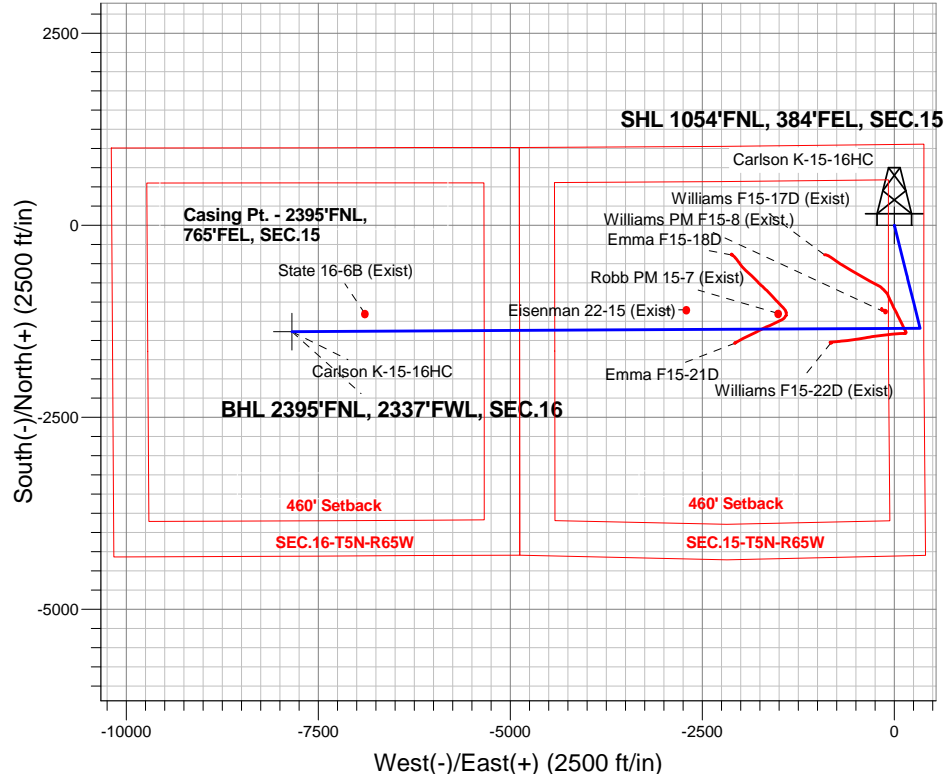
Azimuths to True North
 Magnetic North: 8.26°

Magnetic Field
 Strength: 52725.3nT
 Dip Angle: 66.93°
 Date: 6/18/2015
 Model: IGRF2010

Carlson 15-D Pad Sec.15-T5N-R65W
 Carlson K-15-16HC
 Plan #2 (6-18-15)
 11:35, June 18 2015

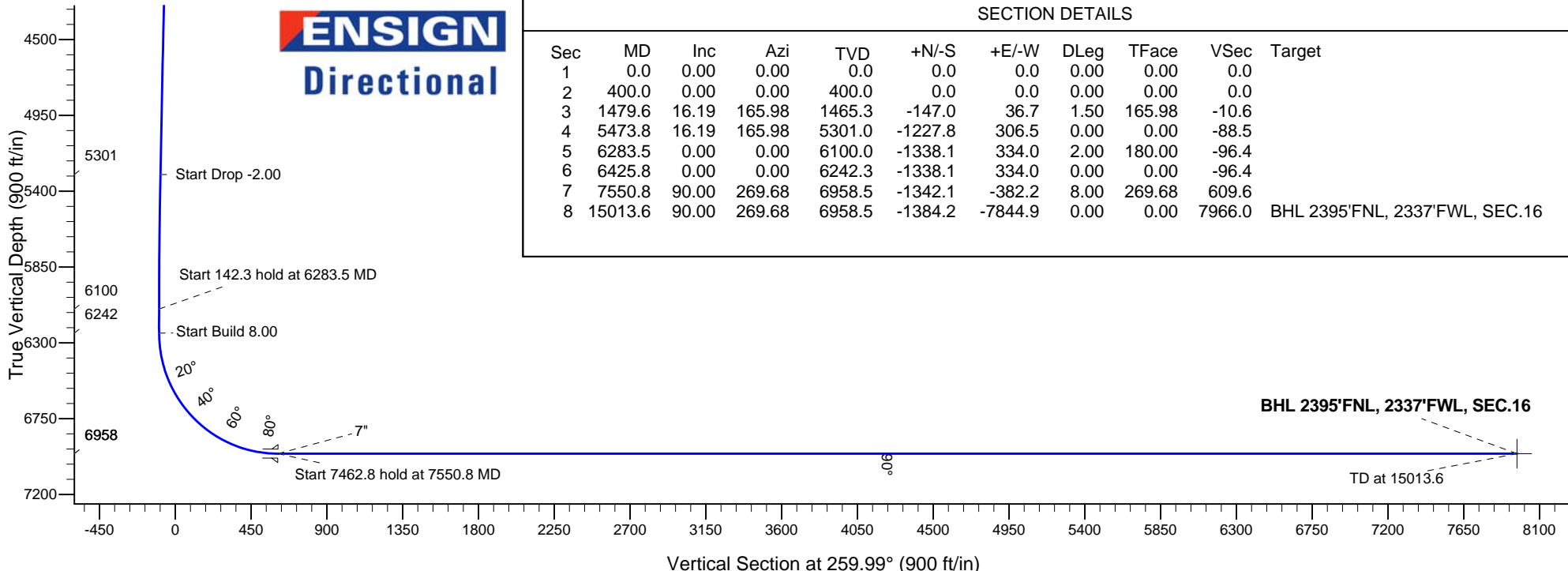
ANNOTATIONS

TVD	MD	Annotation
400.0	400.0	KOP - Start Build 1.50
5301.0	5473.8	Start Drop -2.00
6100.0	6283.5	Start 142.3 hold at 6283.5 MD
6242.3	6425.8	Start Build 8.00
6958.5	7550.8	Start 7462.8 hold at 7550.8 MD
6958.5	15013.6	TD at 15013.6



SECTION DETAILS

Sec	MD	Inc	Azi	TVD	+N/-S	+E/-W	DLeg	TFace	VSec	Target
1	0.0	0.00	0.00	0.0	0.0	0.0	0.00	0.00	0.0	
2	400.0	0.00	0.00	400.0	0.0	0.0	0.00	0.00	0.0	
3	1479.6	16.19	165.98	1465.3	-147.0	36.7	1.50	165.98	-10.6	
4	5473.8	16.19	165.98	5301.0	-1227.8	306.5	0.00	0.00	-88.5	
5	6283.5	0.00	0.00	6100.0	-1338.1	334.0	2.00	180.00	-96.4	
6	6425.8	0.00	0.00	6242.3	-1338.1	334.0	0.00	0.00	-96.4	
7	7550.8	90.00	269.68	6958.5	-1342.1	-382.2	8.00	269.68	609.6	
8	15013.6	90.00	269.68	6958.5	-1384.2	-7844.9	0.00	0.00	7966.0	BHL 2395'FNL, 2337'FWL, SEC.16



BHL 2395'FNL, 2337'FWL, SEC.16

TD at 15013.6



Bayswater Exploration & Production, LLC

SEC.15-T5N-R65W

Carlson 15-D Pad Sec.15-T5N-R65W

Carlson K-15-16HC

Wellbore #1

Plan: Plan #2 (6-18-15)

Standard Planning Report

18 June, 2015



Database:	EDMNEW	Local Co-ordinate Reference:	Well Carlson K-15-16HC
Company:	Bayswater Exploration & Production, LLC	TVD Reference:	WELL @ 4643.5ft (RKB - 22.5')
Project:	SEC.15-T5N-R65W	MD Reference:	WELL @ 4643.5ft (RKB - 22.5')
Site:	Carlson 15-D Pad Sec.15-T5N-R65W	North Reference:	True
Well:	Carlson K-15-16HC	Survey Calculation Method:	Minimum Curvature
Wellbore:	Wellbore #1		
Design:	Plan #2 (6-18-15)		

Project	SEC.15-T5N-R65W, Weld County, Colorado		
Map System:	US State Plane 1983	System Datum:	Mean Sea Level
Geo Datum:	North American Datum 1983		Using Well Reference Point
Map Zone:	Colorado Northern Zone		Using geodetic scale factor

Site	Carlson 15-D Pad Sec.15-T5N-R65W				
Site Position:		Northing:	1,391,065.32 ft	Latitude:	40.403694
From:	Lat/Long	Easting:	3,239,277.09 ft	Longitude:	-104.640808
Position Uncertainty:	0.0 ft	Slot Radius:	"	Grid Convergence:	0.56 °

Well	Carlson K-15-16HC					
Well Position	+N-S	1.4 ft	Northing:	1,391,065.31 ft	Latitude:	40.403698
	+E-W	-150.1 ft	Easting:	3,239,126.97 ft	Longitude:	-104.641347
Position Uncertainty		0.0 ft	Wellhead Elevation:	ft	Ground Level:	4,621.0 ft

Wellbore	Wellbore #1				
Magnetics	Model Name	Sample Date	Declination (°)	Dip Angle (°)	Field Strength (nT)
	IGRF2010	6/18/2015	8.26	66.93	52,725

Design	Plan #2 (6-18-15)			
Audit Notes:				
Version:	Phase:	PROTOTYPE	Tie On Depth:	0.0
Vertical Section:	Depth From (TVD) (ft)	+N-S (ft)	+E-W (ft)	Direction (°)
	0.0	0.0	0.0	259.99

Plan Sections										
Measured Depth (ft)	Inclination (°)	Azimuth (°)	Vertical Depth (ft)	+N-S (ft)	+E-W (ft)	Dogleg Rate (°/100ft)	Build Rate (°/100ft)	Turn Rate (°/100ft)	TFO (°)	Target
0.0	0.00	0.00	0.0	0.0	0.0	0.00	0.00	0.00	0.00	
400.0	0.00	0.00	400.0	0.0	0.0	0.00	0.00	0.00	0.00	
1,479.6	16.19	165.98	1,465.3	-147.0	36.7	1.50	1.50	0.00	165.98	
5,473.8	16.19	165.98	5,301.0	-1,227.8	306.5	0.00	0.00	0.00	0.00	
6,283.5	0.00	0.00	6,100.0	-1,338.1	334.0	2.00	-2.00	0.00	180.00	
6,425.8	0.00	0.00	6,242.3	-1,338.1	334.0	0.00	0.00	0.00	0.00	
7,550.8	90.00	269.68	6,958.5	-1,342.1	-382.2	8.00	8.00	0.00	269.68	
15,013.6	90.00	269.68	6,958.5	-1,384.2	-7,844.9	0.00	0.00	0.00	0.00	BHL 2395'FNL, 233

Database:	EDMNEW	Local Co-ordinate Reference:	Well Carlson K-15-16HC
Company:	Bayswater Exploration & Production, LLC	TVD Reference:	WELL @ 4643.5ft (RKB - 22.5')
Project:	SEC.15-T5N-R65W	MD Reference:	WELL @ 4643.5ft (RKB - 22.5')
Site:	Carlson 15-D Pad Sec.15-T5N-R65W	North Reference:	True
Well:	Carlson K-15-16HC	Survey Calculation Method:	Minimum Curvature
Wellbore:	Wellbore #1		
Design:	Plan #2 (6-18-15)		

Planned Survey									
Measured Depth (ft)	Inclination (°)	Azimuth (°)	Vertical Depth (ft)	+N-S (ft)	+E-W (ft)	Vertical Section (ft)	Dogleg Rate (°/100ft)	Build Rate (°/100ft)	Turn Rate (°/100ft)
0.0	0.00	0.00	0.0	0.0	0.0	0.0	0.00	0.00	0.00
100.0	0.00	0.00	100.0	0.0	0.0	0.0	0.00	0.00	0.00
200.0	0.00	0.00	200.0	0.0	0.0	0.0	0.00	0.00	0.00
300.0	0.00	0.00	300.0	0.0	0.0	0.0	0.00	0.00	0.00
400.0	0.00	0.00	400.0	0.0	0.0	0.0	0.00	0.00	0.00
KOP - Start Build 1.50									
500.0	1.50	165.98	500.0	-1.3	0.3	-0.1	1.50	1.50	0.00
600.0	3.00	165.98	599.9	-5.1	1.3	-0.4	1.50	1.50	0.00
700.0	4.50	165.98	699.7	-11.4	2.9	-0.8	1.50	1.50	0.00
800.0	6.00	165.98	799.3	-20.3	5.1	-1.5	1.50	1.50	0.00
900.0	7.50	165.98	898.6	-31.7	7.9	-2.3	1.50	1.50	0.00
1,000.0	9.00	165.98	997.5	-45.6	11.4	-3.3	1.50	1.50	0.00
1,100.0	10.50	165.98	1,096.1	-62.1	15.5	-4.5	1.50	1.50	0.00
1,200.0	12.00	165.98	1,194.2	-81.0	20.2	-5.8	1.50	1.50	0.00
1,300.0	13.50	165.98	1,291.7	-102.4	25.6	-7.4	1.50	1.50	0.00
1,400.0	15.00	165.98	1,388.6	-126.3	31.5	-9.1	1.50	1.50	0.00
1,479.6	16.19	165.98	1,465.3	-147.0	36.7	-10.6	1.50	1.50	0.00
1,500.0	16.19	165.98	1,484.9	-152.6	38.1	-11.0	0.00	0.00	0.00
1,600.0	16.19	165.98	1,580.9	-179.6	44.8	-12.9	0.00	0.00	0.00
1,700.0	16.19	165.98	1,676.9	-206.7	51.6	-14.9	0.00	0.00	0.00
1,800.0	16.19	165.98	1,773.0	-233.7	58.3	-16.8	0.00	0.00	0.00
1,900.0	16.19	165.98	1,869.0	-260.8	65.1	-18.8	0.00	0.00	0.00
2,000.0	16.19	165.98	1,965.0	-287.9	71.9	-20.7	0.00	0.00	0.00
2,100.0	16.19	165.98	2,061.1	-314.9	78.6	-22.7	0.00	0.00	0.00
2,200.0	16.19	165.98	2,157.1	-342.0	85.4	-24.6	0.00	0.00	0.00
2,300.0	16.19	165.98	2,253.1	-369.0	92.1	-26.6	0.00	0.00	0.00
2,400.0	16.19	165.98	2,349.2	-396.1	98.9	-28.5	0.00	0.00	0.00
2,500.0	16.19	165.98	2,445.2	-423.1	105.6	-30.5	0.00	0.00	0.00
2,600.0	16.19	165.98	2,541.2	-450.2	112.4	-32.4	0.00	0.00	0.00
2,700.0	16.19	165.98	2,637.3	-477.3	119.1	-34.4	0.00	0.00	0.00
2,800.0	16.19	165.98	2,733.3	-504.3	125.9	-36.3	0.00	0.00	0.00
2,900.0	16.19	165.98	2,829.3	-531.4	132.6	-38.3	0.00	0.00	0.00
3,000.0	16.19	165.98	2,925.4	-558.4	139.4	-40.2	0.00	0.00	0.00
3,100.0	16.19	165.98	3,021.4	-585.5	146.1	-42.2	0.00	0.00	0.00
3,200.0	16.19	165.98	3,117.4	-612.6	152.9	-44.1	0.00	0.00	0.00
3,300.0	16.19	165.98	3,213.5	-639.6	159.7	-46.1	0.00	0.00	0.00
3,400.0	16.19	165.98	3,309.5	-666.7	166.4	-48.0	0.00	0.00	0.00
3,500.0	16.19	165.98	3,405.5	-693.7	173.2	-50.0	0.00	0.00	0.00
3,600.0	16.19	165.98	3,501.6	-720.8	179.9	-51.9	0.00	0.00	0.00
3,700.0	16.19	165.98	3,597.6	-747.8	186.7	-53.9	0.00	0.00	0.00
3,800.0	16.19	165.98	3,693.6	-774.9	193.4	-55.8	0.00	0.00	0.00
3,900.0	16.19	165.98	3,789.7	-802.0	200.2	-57.8	0.00	0.00	0.00
4,000.0	16.19	165.98	3,885.7	-829.0	206.9	-59.7	0.00	0.00	0.00
4,100.0	16.19	165.98	3,981.7	-856.1	213.7	-61.7	0.00	0.00	0.00
4,200.0	16.19	165.98	4,077.7	-883.1	220.4	-63.6	0.00	0.00	0.00
4,300.0	16.19	165.98	4,173.8	-910.2	227.2	-65.6	0.00	0.00	0.00
4,400.0	16.19	165.98	4,269.8	-937.3	233.9	-67.5	0.00	0.00	0.00
4,500.0	16.19	165.98	4,365.8	-964.3	240.7	-69.5	0.00	0.00	0.00
4,600.0	16.19	165.98	4,461.9	-991.4	247.5	-71.4	0.00	0.00	0.00
4,700.0	16.19	165.98	4,557.9	-1,018.4	254.2	-73.4	0.00	0.00	0.00
4,800.0	16.19	165.98	4,653.9	-1,045.5	261.0	-75.3	0.00	0.00	0.00
4,900.0	16.19	165.98	4,750.0	-1,072.5	267.7	-77.3	0.00	0.00	0.00
5,000.0	16.19	165.98	4,846.0	-1,099.6	274.5	-79.2	0.00	0.00	0.00
5,100.0	16.19	165.98	4,942.0	-1,126.7	281.2	-81.2	0.00	0.00	0.00

Database:	EDMNEW	Local Co-ordinate Reference:	Well Carlson K-15-16HC
Company:	Bayswater Exploration & Production, LLC	TVD Reference:	WELL @ 4643.5ft (RKB - 22.5')
Project:	SEC.15-T5N-R65W	MD Reference:	WELL @ 4643.5ft (RKB - 22.5')
Site:	Carlson 15-D Pad Sec.15-T5N-R65W	North Reference:	True
Well:	Carlson K-15-16HC	Survey Calculation Method:	Minimum Curvature
Wellbore:	Wellbore #1		
Design:	Plan #2 (6-18-15)		

Planned Survey										
Measured Depth (ft)	Inclination (°)	Azimuth (°)	Vertical Depth (ft)	+N/-S (ft)	+E/-W (ft)	Vertical Section (ft)	Dogleg Rate (°/100ft)	Build Rate (°/100ft)	Turn Rate (°/100ft)	
5,200.0	16.19	165.98	5,038.1	-1,153.7	288.0	-83.1	0.00	0.00	0.00	
5,300.0	16.19	165.98	5,134.1	-1,180.8	294.7	-85.1	0.00	0.00	0.00	
5,400.0	16.19	165.98	5,230.1	-1,207.8	301.5	-87.0	0.00	0.00	0.00	
5,473.8	16.19	165.98	5,301.0	-1,227.8	306.5	-88.5	0.00	0.00	0.00	
Start Drop -2.00										
5,500.0	15.67	165.98	5,326.2	-1,234.8	308.2	-89.0	2.00	-2.00	0.00	
5,600.0	13.67	165.98	5,422.9	-1,259.4	314.3	-90.7	2.00	-2.00	0.00	
5,700.0	11.67	165.98	5,520.5	-1,280.6	319.7	-92.3	2.00	-2.00	0.00	
5,800.0	9.67	165.98	5,618.8	-1,298.6	324.1	-93.6	2.00	-2.00	0.00	
5,900.0	7.67	165.98	5,717.6	-1,313.2	327.8	-94.6	2.00	-2.00	0.00	
6,000.0	5.67	165.98	5,816.9	-1,324.5	330.6	-95.4	2.00	-2.00	0.00	
6,100.0	3.67	165.98	5,916.6	-1,332.4	332.6	-96.0	2.00	-2.00	0.00	
6,200.0	1.67	165.98	6,016.5	-1,336.9	333.7	-96.3	2.00	-2.00	0.00	
6,283.5	0.00	165.98	6,100.0	-1,338.1	334.0	-96.4	2.00	-2.00	0.00	
Start 142.3 hold at 6283.5 MD										
6,300.0	0.00	0.00	6,116.5	-1,338.1	334.0	-96.4	0.00	0.00	0.00	
6,400.0	0.00	0.00	6,216.5	-1,338.1	334.0	-96.4	0.00	0.00	0.00	
6,425.8	0.00	0.00	6,242.3	-1,338.1	334.0	-96.4	0.00	0.00	0.00	
Start Build 8.00										
6,500.0	5.93	269.68	6,316.3	-1,338.1	330.2	-92.6	8.00	8.00	0.00	
6,600.0	13.93	269.68	6,414.8	-1,338.2	312.9	-75.7	8.00	8.00	0.00	
6,700.0	21.93	269.68	6,509.8	-1,338.4	282.2	-45.3	8.00	8.00	0.00	
6,800.0	29.93	269.68	6,599.7	-1,338.6	238.5	-2.2	8.00	8.00	0.00	
6,900.0	37.93	269.68	6,682.6	-1,339.0	182.7	52.7	8.00	8.00	0.00	
7,000.0	45.93	269.68	6,756.9	-1,339.3	115.9	118.6	8.00	8.00	0.00	
7,100.0	53.93	269.68	6,821.2	-1,339.8	39.4	193.9	8.00	8.00	0.00	
7,200.0	61.93	269.68	6,874.3	-1,340.2	-45.2	277.4	8.00	8.00	0.00	
7,300.0	69.93	269.68	6,915.0	-1,340.8	-136.5	367.3	8.00	8.00	0.00	
7,400.0	77.93	269.68	6,942.7	-1,341.3	-232.5	462.0	8.00	8.00	0.00	
7,500.0	85.93	269.68	6,956.7	-1,341.9	-331.4	559.5	8.00	8.00	0.00	
7,550.8	90.00	269.68	6,958.5	-1,342.1	-382.2	609.5	8.00	8.00	0.00	
Start 7462.8 hold at 7550.8 MD - 7"										
7,600.0	90.00	269.68	6,958.5	-1,342.4	-431.4	658.0	0.01	0.01	0.00	
7,700.0	90.00	269.68	6,958.5	-1,343.0	-531.4	756.6	0.00	0.00	0.00	
7,800.0	90.00	269.68	6,958.5	-1,343.5	-631.4	855.2	0.00	0.00	0.00	
7,900.0	90.00	269.68	6,958.5	-1,344.1	-731.4	953.8	0.00	0.00	0.00	
8,000.0	90.00	269.68	6,958.5	-1,344.7	-831.3	1,052.3	0.00	0.00	0.00	
8,100.0	90.00	269.68	6,958.5	-1,345.2	-931.3	1,150.9	0.00	0.00	0.00	
8,200.0	90.00	269.68	6,958.5	-1,345.8	-1,031.3	1,249.5	0.00	0.00	0.00	
8,300.0	90.00	269.68	6,958.5	-1,346.4	-1,131.3	1,348.1	0.00	0.00	0.00	
8,400.0	90.00	269.68	6,958.5	-1,346.9	-1,231.3	1,446.6	0.00	0.00	0.00	
8,500.0	90.00	269.68	6,958.5	-1,347.5	-1,331.3	1,545.2	0.00	0.00	0.00	
8,600.0	90.00	269.68	6,958.5	-1,348.1	-1,431.3	1,643.8	0.00	0.00	0.00	
8,700.0	90.00	269.68	6,958.5	-1,348.6	-1,531.3	1,742.4	0.00	0.00	0.00	
8,800.0	90.00	269.68	6,958.5	-1,349.2	-1,631.3	1,840.9	0.00	0.00	0.00	
8,900.0	90.00	269.68	6,958.5	-1,349.7	-1,731.3	1,939.5	0.00	0.00	0.00	
9,000.0	90.00	269.68	6,958.5	-1,350.3	-1,831.3	2,038.1	0.00	0.00	0.00	
9,100.0	90.00	269.68	6,958.5	-1,350.9	-1,931.3	2,136.7	0.00	0.00	0.00	
9,200.0	90.00	269.68	6,958.5	-1,351.4	-2,031.3	2,235.2	0.00	0.00	0.00	
9,300.0	90.00	269.68	6,958.5	-1,352.0	-2,131.3	2,333.8	0.00	0.00	0.00	
9,400.0	90.00	269.68	6,958.5	-1,352.6	-2,231.3	2,432.4	0.00	0.00	0.00	
9,500.0	90.00	269.68	6,958.5	-1,353.1	-2,331.3	2,531.0	0.00	0.00	0.00	
9,600.0	90.00	269.68	6,958.5	-1,353.7	-2,431.3	2,629.5	0.00	0.00	0.00	

Database:	EDMNEW	Local Co-ordinate Reference:	Well Carlson K-15-16HC
Company:	Bayswater Exploration & Production, LLC	TVD Reference:	WELL @ 4643.5ft (RKB - 22.5')
Project:	SEC.15-T5N-R65W	MD Reference:	WELL @ 4643.5ft (RKB - 22.5')
Site:	Carlson 15-D Pad Sec.15-T5N-R65W	North Reference:	True
Well:	Carlson K-15-16HC	Survey Calculation Method:	Minimum Curvature
Wellbore:	Wellbore #1		
Design:	Plan #2 (6-18-15)		

Planned Survey									
Measured Depth (ft)	Inclination (°)	Azimuth (°)	Vertical Depth (ft)	+N/-S (ft)	+E/-W (ft)	Vertical Section (ft)	Dogleg Rate (°/100ft)	Build Rate (°/100ft)	Turn Rate (°/100ft)
9,700.0	90.00	269.68	6,958.5	-1,354.3	-2,531.3	2,728.1	0.00	0.00	0.00
9,800.0	90.00	269.68	6,958.5	-1,354.8	-2,631.3	2,826.7	0.00	0.00	0.00
9,900.0	90.00	269.68	6,958.5	-1,355.4	-2,731.3	2,925.3	0.00	0.00	0.00
10,000.0	90.00	269.68	6,958.5	-1,355.9	-2,831.3	3,023.8	0.00	0.00	0.00
10,100.0	90.00	269.68	6,958.5	-1,356.5	-2,931.3	3,122.4	0.00	0.00	0.00
10,200.0	90.00	269.68	6,958.5	-1,357.1	-3,031.3	3,221.0	0.00	0.00	0.00
10,300.0	90.00	269.68	6,958.5	-1,357.6	-3,131.3	3,319.6	0.00	0.00	0.00
10,400.0	90.00	269.68	6,958.5	-1,358.2	-3,231.3	3,418.2	0.00	0.00	0.00
10,500.0	90.00	269.68	6,958.5	-1,358.8	-3,331.3	3,516.7	0.00	0.00	0.00
10,600.0	90.00	269.68	6,958.5	-1,359.3	-3,431.3	3,615.3	0.00	0.00	0.00
10,700.0	90.00	269.68	6,958.5	-1,359.9	-3,531.3	3,713.9	0.00	0.00	0.00
10,800.0	90.00	269.68	6,958.5	-1,360.5	-3,631.3	3,812.5	0.00	0.00	0.00
10,900.0	90.00	269.68	6,958.5	-1,361.0	-3,731.3	3,911.0	0.00	0.00	0.00
11,000.0	90.00	269.68	6,958.5	-1,361.6	-3,831.3	4,009.6	0.00	0.00	0.00
11,100.0	90.00	269.68	6,958.5	-1,362.2	-3,931.3	4,108.2	0.00	0.00	0.00
11,200.0	90.00	269.68	6,958.5	-1,362.7	-4,031.3	4,206.8	0.00	0.00	0.00
11,300.0	90.00	269.68	6,958.5	-1,363.3	-4,131.3	4,305.3	0.00	0.00	0.00
11,400.0	90.00	269.68	6,958.5	-1,363.8	-4,231.3	4,403.9	0.00	0.00	0.00
11,500.0	90.00	269.68	6,958.5	-1,364.4	-4,331.3	4,502.5	0.00	0.00	0.00
11,600.0	90.00	269.68	6,958.5	-1,365.0	-4,431.3	4,601.1	0.00	0.00	0.00
11,700.0	90.00	269.68	6,958.5	-1,365.5	-4,531.3	4,699.6	0.00	0.00	0.00
11,800.0	90.00	269.68	6,958.5	-1,366.1	-4,631.3	4,798.2	0.00	0.00	0.00
11,900.0	90.00	269.68	6,958.5	-1,366.7	-4,731.3	4,896.8	0.00	0.00	0.00
12,000.0	90.00	269.68	6,958.5	-1,367.2	-4,831.3	4,995.4	0.00	0.00	0.00
12,100.0	90.00	269.68	6,958.5	-1,367.8	-4,931.3	5,093.9	0.00	0.00	0.00
12,200.0	90.00	269.68	6,958.5	-1,368.4	-5,031.3	5,192.5	0.00	0.00	0.00
12,300.0	90.00	269.68	6,958.5	-1,368.9	-5,131.3	5,291.1	0.00	0.00	0.00
12,400.0	90.00	269.68	6,958.5	-1,369.5	-5,231.3	5,389.7	0.00	0.00	0.00
12,500.0	90.00	269.68	6,958.5	-1,370.0	-5,331.3	5,488.2	0.00	0.00	0.00
12,600.0	90.00	269.68	6,958.5	-1,370.6	-5,431.3	5,586.8	0.00	0.00	0.00
12,700.0	90.00	269.68	6,958.5	-1,371.2	-5,531.3	5,685.4	0.00	0.00	0.00
12,800.0	90.00	269.68	6,958.5	-1,371.7	-5,631.3	5,784.0	0.00	0.00	0.00
12,900.0	90.00	269.68	6,958.5	-1,372.3	-5,731.3	5,882.5	0.00	0.00	0.00
13,000.0	90.00	269.68	6,958.5	-1,372.9	-5,831.3	5,981.1	0.00	0.00	0.00
13,100.0	90.00	269.68	6,958.5	-1,373.4	-5,931.3	6,079.7	0.00	0.00	0.00
13,200.0	90.00	269.68	6,958.5	-1,374.0	-6,031.3	6,178.3	0.00	0.00	0.00
13,300.0	90.00	269.68	6,958.5	-1,374.6	-6,131.3	6,276.8	0.00	0.00	0.00
13,400.0	90.00	269.68	6,958.5	-1,375.1	-6,231.3	6,375.4	0.00	0.00	0.00
13,500.0	90.00	269.68	6,958.5	-1,375.7	-6,331.3	6,474.0	0.00	0.00	0.00
13,600.0	90.00	269.68	6,958.5	-1,376.2	-6,431.3	6,572.6	0.00	0.00	0.00
13,700.0	90.00	269.68	6,958.5	-1,376.8	-6,531.3	6,671.1	0.00	0.00	0.00
13,800.0	90.00	269.68	6,958.5	-1,377.4	-6,631.3	6,769.7	0.00	0.00	0.00
13,900.0	90.00	269.68	6,958.5	-1,377.9	-6,731.3	6,868.3	0.00	0.00	0.00
14,000.0	90.00	269.68	6,958.5	-1,378.5	-6,831.3	6,966.9	0.00	0.00	0.00
14,100.0	90.00	269.68	6,958.5	-1,379.1	-6,931.3	7,065.4	0.00	0.00	0.00
14,200.0	90.00	269.68	6,958.5	-1,379.6	-7,031.3	7,164.0	0.00	0.00	0.00
14,300.0	90.00	269.68	6,958.5	-1,380.2	-7,131.2	7,262.6	0.00	0.00	0.00
14,400.0	90.00	269.68	6,958.5	-1,380.8	-7,231.2	7,361.2	0.00	0.00	0.00
14,500.0	90.00	269.68	6,958.5	-1,381.3	-7,331.2	7,459.7	0.00	0.00	0.00
14,600.0	90.00	269.68	6,958.5	-1,381.9	-7,431.2	7,558.3	0.00	0.00	0.00
14,700.0	90.00	269.68	6,958.5	-1,382.5	-7,531.2	7,656.9	0.00	0.00	0.00
14,800.0	90.00	269.68	6,958.5	-1,383.0	-7,631.2	7,755.5	0.00	0.00	0.00
14,900.0	90.00	269.68	6,958.5	-1,383.6	-7,731.2	7,854.0	0.00	0.00	0.00
15,000.0	90.00	269.68	6,958.5	-1,384.1	-7,831.2	7,952.6	0.00	0.00	0.00

Database:	EDMNEW	Local Co-ordinate Reference:	Well Carlson K-15-16HC
Company:	Bayswater Exploration & Production, LLC	TVD Reference:	WELL @ 4643.5ft (RKB - 22.5')
Project:	SEC.15-T5N-R65W	MD Reference:	WELL @ 4643.5ft (RKB - 22.5')
Site:	Carlson 15-D Pad Sec.15-T5N-R65W	North Reference:	True
Well:	Carlson K-15-16HC	Survey Calculation Method:	Minimum Curvature
Wellbore:	Wellbore #1		
Design:	Plan #2 (6-18-15)		

Planned Survey										
Measured Depth (ft)	Inclination (°)	Azimuth (°)	Vertical Depth (ft)	+N/-S (ft)	+E/-W (ft)	Vertical Section (ft)	Dogleg Rate (°/100ft)	Build Rate (°/100ft)	Turn Rate (°/100ft)	
15,013.6	90.00	269.68	6,958.5	-1,384.2	-7,844.8	7,966.0	0.00	0.00	0.00	
TD at 15013.6										

Targets										
Target Name	Dip Angle (°)	Dip Dir. (°)	TVD (ft)	+N/-S (ft)	+E/-W (ft)	Northing (ft)	Easting (ft)	Latitude	Longitude	
SHL 1054'FNL, 384'FI - hit/miss target - plan hits target center - Shape - Point	0.00	0.00	1.0	0.0	0.0	1,391,065.32	3,239,126.97	40.403698	-104.641347	
BHL 2395'FNL, 2337'I - plan hits target center - Point	0.00	0.00	6,958.5	-1,384.2	-7,844.9	1,389,605.25	3,231,296.21	40.399895	-104.669513	

Casing Points						
Measured Depth (ft)	Vertical Depth (ft)	Name	Casing Diameter (")	Hole Diameter (")		
7,550.8	6,958.5	7"	7	7-1/2		

Plan Annotations					
Measured Depth (ft)	Vertical Depth (ft)	+N/-S (ft)	+E/-W (ft)	Comment	
400.0	400.0	0.0	0.0	KOP - Start Build 1.50	
5,473.8	5,301.0	-1,227.8	306.5	Start Drop -2.00	
6,283.5	6,100.0	-1,338.1	334.0	Start 142.3 hold at 6283.5 MD	
6,425.8	6,242.3	-1,338.1	334.0	Start Build 8.00	
7,550.8	6,958.5	-1,342.1	-382.2	Start 7462.8 hold at 7550.8 MD	
15,013.6	6,958.5	-1,384.2	-7,844.8	TD at 15013.6	