



Bill Barrett Corporation

Bill Barrett Corp.

Weld Co., CO

Sec.35-T5N-R62W

Anschutz State 5-62-35-1724BH2

Wellbore #1

Plan: Design #2

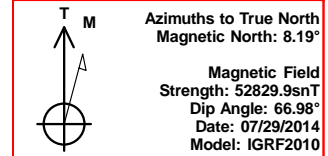
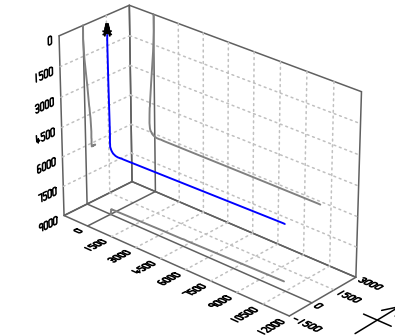
Standard Planning Report

02 June, 2015



Bill Barrett Corp.
Project: Weld Co., CO
Site: Sec.35-T5N-R62W
Well: Anschutz State 5-62-35-1724BH2
Wellbore: Wellbore #1
Design: Design #2
Lat: 40° 21' 26.420 N
Long: 104° 17' 55.770 W
Pad GL: 4609.00
KB: WELL @ 4632.00usft (Original Well Elev)

Archer



SECTION DETAILS

MD	Inc	Azi	TVD	+N/-S	+E/-W	Dleg	TFace	VSec	Annotation
0.00	0.00	0.00	0.00	0.00	0.00	0.00	0.00	0.00	
900.00	0.00	0.00	900.00	0.00	0.00	0.00	0.00	0.00	Start Build 2.00
1259.36	7.19	319.64	1258.42	17.15	-14.58	2.00	319.64	-14.18	Start 3604.02 hold at 1259.36 MD
4863.38	7.19	319.64	4834.12	360.75	-306.56	0.00	0.00	-298.17	Start Drop -2.00
5222.74	0.00	0.00	5192.54	377.90	-321.14	2.00	180.00	-312.35	Start 500.00 hold at 5222.74 MD
5722.74	0.00	0.00	5692.54	377.90	-321.14	0.00	0.00	-312.35	Start Build 12.00
6473.72	90.12	88.68	6170.00	388.91	157.18	12.00	88.68	166.10	Start 9748.55 hold at 6473.72 MD
16222.27	90.12	88.68	6150.00	613.27	9903.13	0.00	0.00	9914.63	TD at 16222.27

WELL DETAILS: Anschutz State 5-62-35-1724BH2

+N/-S	+E/-W	Northing	Ground Level: Easting	4609.00 Latitude	Longitude	Slot
0.00	0.00	1375286.390	3334739.959	40° 21' 26.420 N	104° 17' 55.770 W	

PROJECT DETAILS: Weld Co., CO

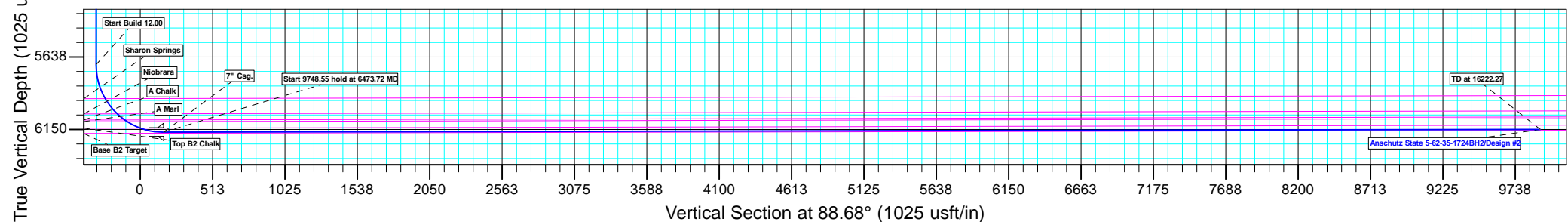
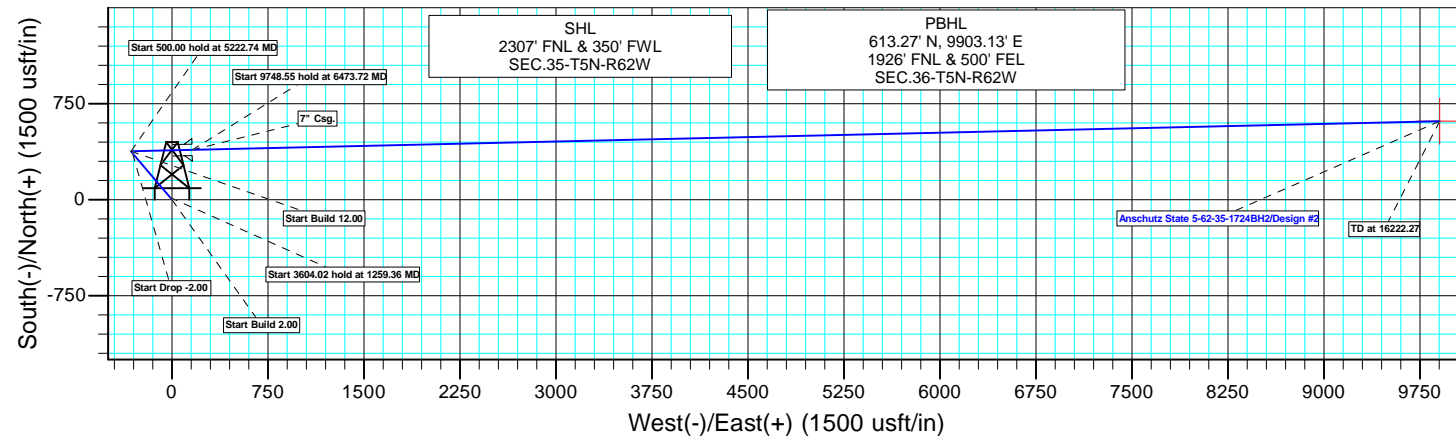
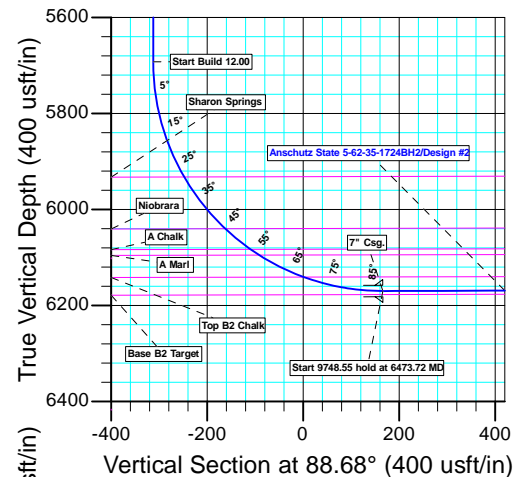
Geodetic System: US State Plane 1983
Datum: North American Datum 1983
Ellipsoid: GRS 1980
Zone: Colorado Northern Zone
System Datum: Mean Sea Level

CASING DETAILS

TVD	MD	Name
6170.00	6473.72	7" Csg.

WELLBORE TARGET DETAILS (LAT/LONG)

Name	TVD	+N/-S	+E/-W	Latitude	Longitude	Shape Point
Anschutz State 5-62-35-1724BH2 tgt	6150.00	613.27	9903.13	40° 21' 32.461 N	104° 15' 47.840 W	



Plan: Design #2 (Anschutz State 5-62-35-1724BH2/Wellbore #1)

Created By: Ricky Osburn Date: 10:36, June 02 2015

Database:	EDMDBBW	Local Co-ordinate Reference:	Well Anschutz State 5-62-35-1724BH2
Company:	Bill Barrett Corp.	TVD Reference:	WELL @ 4632.00usft (Original Well Elev)
Project:	Weld Co., CO	MD Reference:	WELL @ 4632.00usft (Original Well Elev)
Site:	Sec.35-T5N-R62W	North Reference:	True
Well:	Anschutz State 5-62-35-1724BH2	Survey Calculation Method:	Minimum Curvature
Wellbore:	Wellbore #1		
Design:	Design #2		

Project	Weld Co., CO		
Map System:	US State Plane 1983	System Datum:	Mean Sea Level
Geo Datum:	North American Datum 1983		
Map Zone:	Colorado Northern Zone		

Site		Sec.35-T5N-R62W			
Site Position:		Northing:	1,375,286.395 usft	Latitude:	40° 21' 26.420 N
From:	Lat/Long	Easting:	3,334,739.959 usft	Longitude:	104° 17' 55.770 W
Position Uncertainty:	0.00 usft	Slot Radius:	13-3/16 "	Grid Convergence:	0.78 °

Well		Anschutz State 5-62-35-1724BH2				
Well Position	+N/-S	0.00 usft	Northing:	1,375,286.390 usft	Latitude:	40° 21' 26.420 N
	+E/-W	0.00 usft	Easting:	3,334,739.959 usft	Longitude:	104° 17' 55.770 W
Position Uncertainty		0.00 usft	Wellhead Elevation:	usft	Ground Level:	4,609.00 usft

Wellbore	Wellbore #1				
Magnetics	Model Name	Sample Date	Declination (°)	Dip Angle (°)	Field Strength (nT)
	IGRF2010	2014/07/29	8.19	66.98	52,830

Design	Design #2			
Audit Notes:				
Version:	Phase:	PLAN	Tie On Depth:	0.00
Vertical Section:	Depth From (TVD) (usft)	+N/-S (usft)	+E/-W (usft)	Direction (°)
	0.00	0.00	0.00	88.68

Plan Sections										
Measured Depth (usft)	Inclination (°)	Azimuth (°)	Vertical Depth (usft)	+N/-S (usft)	+E/-W (usft)	Dogleg Rate (°/100usft)	Build Rate (°/100usft)	Turn Rate (°/100usft)	TFO (°)	Target
0.00	0.00	0.00	0.00	0.00	0.00	0.00	0.00	0.00	0.00	
900.00	0.00	0.00	900.00	0.00	0.00	0.00	0.00	0.00	0.00	
1,259.36	7.19	319.64	1,258.42	17.15	-14.58	2.00	2.00	0.00	319.64	
4,863.38	7.19	319.64	4,834.12	360.75	-306.56	0.00	0.00	0.00	0.00	
5,222.74	0.00	0.00	5,192.54	377.90	-321.14	2.00	-2.00	0.00	180.00	
5,722.74	0.00	0.00	5,692.54	377.90	-321.14	0.00	0.00	0.00	0.00	
6,473.72	90.12	88.68	6,170.00	388.91	157.18	12.00	12.00	0.00	88.68	Anschutz State 5-62-35-1724BH2
16,222.27	90.12	88.68	6,150.00	613.27	9,903.13	0.00	0.00	0.00	0.00	Anschutz State 5-62-35-1724BH2

Database:	EDMDBBW	Local Co-ordinate Reference:	Well Anschutz State 5-62-35-1724BH2
Company:	Bill Barrett Corp.	TVD Reference:	WELL @ 4632.00usft (Original Well Elev)
Project:	Weld Co., CO	MD Reference:	WELL @ 4632.00usft (Original Well Elev)
Site:	Sec.35-T5N-R62W	North Reference:	True
Well:	Anschutz State 5-62-35-1724BH2	Survey Calculation Method:	Minimum Curvature
Wellbore:	Wellbore #1		
Design:	Design #2		

Planned Survey									
Measured Depth (usft)	Inclination (°)	Azimuth (°)	Vertical Depth (usft)	+N/-S (usft)	+E/-W (usft)	Vertical Section (usft)	Dogleg Rate (°/100usft)	Build Rate (°/100usft)	Turn Rate (°/100usft)
0.00	0.00	0.00	0.00	0.00	0.00	0.00	0.00	0.00	0.00
100.00	0.00	0.00	100.00	0.00	0.00	0.00	0.00	0.00	0.00
200.00	0.00	0.00	200.00	0.00	0.00	0.00	0.00	0.00	0.00
300.00	0.00	0.00	300.00	0.00	0.00	0.00	0.00	0.00	0.00
400.00	0.00	0.00	400.00	0.00	0.00	0.00	0.00	0.00	0.00
500.00	0.00	0.00	500.00	0.00	0.00	0.00	0.00	0.00	0.00
600.00	0.00	0.00	600.00	0.00	0.00	0.00	0.00	0.00	0.00
700.00	0.00	0.00	700.00	0.00	0.00	0.00	0.00	0.00	0.00
800.00	0.00	0.00	800.00	0.00	0.00	0.00	0.00	0.00	0.00
Start Build 2.00									
900.00	0.00	0.00	900.00	0.00	0.00	0.00	0.00	0.00	0.00
1,000.00	2.00	319.64	999.98	1.33	-1.13	-1.10	2.00	2.00	0.00
1,100.00	4.00	319.64	1,099.84	5.32	-4.52	-4.40	2.00	2.00	0.00
1,200.00	6.00	319.64	1,199.45	11.96	-10.16	-9.88	2.00	2.00	0.00
Start 3604.02 hold at 1259.36 MD									
1,259.36	7.19	319.64	1,258.42	17.15	-14.58	-14.18	2.00	2.00	0.00
1,300.00	7.19	319.64	1,298.74	21.03	-17.87	-17.38	0.00	0.00	0.00
1,400.00	7.19	319.64	1,397.95	30.56	-25.97	-25.26	0.00	0.00	0.00
1,500.00	7.19	319.64	1,497.17	40.09	-34.07	-33.14	0.00	0.00	0.00
1,600.00	7.19	319.64	1,596.38	49.63	-42.17	-41.02	0.00	0.00	0.00
1,700.00	7.19	319.64	1,695.60	59.16	-50.28	-48.90	0.00	0.00	0.00
1,800.00	7.19	319.64	1,794.81	68.70	-58.38	-56.78	0.00	0.00	0.00
1,900.00	7.19	319.64	1,894.02	78.23	-66.48	-64.66	0.00	0.00	0.00
2,000.00	7.19	319.64	1,993.24	87.76	-74.58	-72.54	0.00	0.00	0.00
2,100.00	7.19	319.64	2,092.45	97.30	-82.68	-80.42	0.00	0.00	0.00
2,200.00	7.19	319.64	2,191.67	106.83	-90.78	-88.30	0.00	0.00	0.00
2,300.00	7.19	319.64	2,290.88	116.36	-98.89	-96.18	0.00	0.00	0.00
2,400.00	7.19	319.64	2,390.10	125.90	-106.99	-104.06	0.00	0.00	0.00
2,500.00	7.19	319.64	2,489.31	135.43	-115.09	-111.94	0.00	0.00	0.00
2,600.00	7.19	319.64	2,588.52	144.96	-123.19	-119.82	0.00	0.00	0.00
2,700.00	7.19	319.64	2,687.74	154.50	-131.29	-127.70	0.00	0.00	0.00
2,800.00	7.19	319.64	2,786.95	164.03	-139.39	-135.58	0.00	0.00	0.00
2,900.00	7.19	319.64	2,886.17	173.57	-147.50	-143.46	0.00	0.00	0.00
3,000.00	7.19	319.64	2,985.38	183.10	-155.60	-151.34	0.00	0.00	0.00
3,100.00	7.19	319.64	3,084.60	192.63	-163.70	-159.22	0.00	0.00	0.00
3,200.00	7.19	319.64	3,183.81	202.17	-171.80	-167.10	0.00	0.00	0.00
3,300.00	7.19	319.64	3,283.02	211.70	-179.90	-174.98	0.00	0.00	0.00
3,400.00	7.19	319.64	3,382.24	221.23	-188.00	-182.86	0.00	0.00	0.00
3,500.00	7.19	319.64	3,481.45	230.77	-196.11	-190.74	0.00	0.00	0.00
3,600.00	7.19	319.64	3,580.67	240.30	-204.21	-198.62	0.00	0.00	0.00
3,700.00	7.19	319.64	3,679.88	249.83	-212.31	-206.50	0.00	0.00	0.00
3,800.00	7.19	319.64	3,779.10	259.37	-220.41	-214.38	0.00	0.00	0.00
3,900.00	7.19	319.64	3,878.31	268.90	-228.51	-222.26	0.00	0.00	0.00
4,000.00	7.19	319.64	3,977.52	278.44	-236.62	-230.14	0.00	0.00	0.00
Sussex									
4,017.09	7.19	319.64	3,994.48	280.07	-238.00	-231.49	0.00	0.00	0.00
4,100.00	7.19	319.64	4,076.74	287.97	-244.72	-238.02	0.00	0.00	0.00
4,200.00	7.19	319.64	4,175.95	297.50	-252.82	-245.90	0.00	0.00	0.00
4,300.00	7.19	319.64	4,275.17	307.04	-260.92	-253.78	0.00	0.00	0.00
4,400.00	7.19	319.64	4,374.38	316.57	-269.02	-261.66	0.00	0.00	0.00
4,500.00	7.19	319.64	4,473.60	326.10	-277.12	-269.54	0.00	0.00	0.00
4,600.00	7.19	319.64	4,572.81	335.64	-285.23	-277.42	0.00	0.00	0.00
4,700.00	7.19	319.64	4,672.02	345.17	-293.33	-285.30	0.00	0.00	0.00

Database:	EDMDBBW	Local Co-ordinate Reference:	Well Anschutz State 5-62-35-1724BH2
Company:	Bill Barrett Corp.	TVD Reference:	WELL @ 4632.00usft (Original Well Elev)
Project:	Weld Co., CO	MD Reference:	WELL @ 4632.00usft (Original Well Elev)
Site:	Sec.35-T5N-R62W	North Reference:	True
Well:	Anschutz State 5-62-35-1724BH2	Survey Calculation Method:	Minimum Curvature
Wellbore:	Wellbore #1		
Design:	Design #2		

Planned Survey									
Measured Depth (usft)	Inclination (°)	Azimuth (°)	Vertical Depth (usft)	+N/-S (usft)	+E/-W (usft)	Vertical Section (usft)	Dogleg Rate (°/100usft)	Build Rate (°/100usft)	Turn Rate (°/100usft)
4,800.00	7.19	319.64	4,771.24	354.70	-301.43	-293.18	0.00	0.00	0.00
Shannon									
4,831.63	7.19	319.64	4,802.62	357.72	-303.99	-295.67	0.00	0.00	0.00
Start Drop -2.00									
4,863.38	7.19	319.64	4,834.12	360.75	-306.56	-298.17	0.00	0.00	0.00
4,900.00	6.45	319.64	4,870.48	364.06	-309.38	-300.91	2.00	-2.00	0.00
5,000.00	4.45	319.64	4,970.02	371.30	-315.54	-306.90	2.00	-2.00	0.00
5,100.00	2.45	319.64	5,069.84	375.90	-319.44	-310.69	2.00	-2.00	0.00
5,200.00	0.45	319.64	5,169.80	377.83	-321.08	-312.29	2.00	-2.00	0.00
Start 500.00 hold at 5222.74 MD									
5,222.74	0.00	0.00	5,192.54	377.90	-321.14	-312.35	2.00	-2.00	0.00
5,300.00	0.00	0.00	5,269.80	377.90	-321.14	-312.35	0.00	0.00	0.00
5,400.00	0.00	0.00	5,369.80	377.90	-321.14	-312.35	0.00	0.00	0.00
5,500.00	0.00	0.00	5,469.80	377.90	-321.14	-312.35	0.00	0.00	0.00
5,600.00	0.00	0.00	5,569.80	377.90	-321.14	-312.35	0.00	0.00	0.00
5,700.00	0.00	0.00	5,669.80	377.90	-321.14	-312.35	0.00	0.00	0.00
Start Build 12.00									
5,722.74	0.00	0.00	5,692.54	377.90	-321.14	-312.35	0.00	0.00	0.00
5,725.00	0.27	88.68	5,694.80	377.90	-321.13	-312.34	12.00	12.00	0.00
5,750.00	3.27	88.68	5,719.78	377.92	-320.36	-311.57	12.00	12.00	0.00
5,775.00	6.27	88.68	5,744.69	377.97	-318.28	-309.49	12.00	12.00	0.00
5,800.00	9.27	88.68	5,769.46	378.04	-314.90	-306.11	12.00	12.00	0.00
5,825.00	12.27	88.68	5,794.02	378.15	-310.23	-301.44	12.00	12.00	0.00
5,850.00	15.27	88.68	5,818.30	378.29	-304.29	-295.49	12.00	12.00	0.00
5,875.00	18.27	88.68	5,842.23	378.45	-297.07	-288.28	12.00	12.00	0.00
5,900.00	21.27	88.68	5,865.75	378.65	-288.62	-279.82	12.00	12.00	0.00
5,925.00	24.27	88.68	5,888.80	378.87	-278.95	-270.15	12.00	12.00	0.00
5,950.00	27.27	88.68	5,911.31	379.12	-268.08	-259.28	12.00	12.00	0.00
Sharon Springs									
5,974.18	30.17	88.68	5,932.52	379.39	-256.47	-247.66	12.00	12.00	0.00
5,975.00	30.27	88.68	5,933.23	379.40	-256.06	-247.25	12.00	12.00	0.00
6,000.00	33.27	88.68	5,954.48	379.70	-242.90	-234.09	12.00	12.00	0.00
6,025.00	36.27	88.68	5,975.01	380.03	-228.64	-219.83	12.00	12.00	0.00
6,050.00	39.27	88.68	5,994.77	380.38	-213.34	-204.52	12.00	12.00	0.00
6,075.00	42.27	88.68	6,013.70	380.76	-197.02	-188.19	12.00	12.00	0.00
6,100.00	45.27	88.68	6,031.75	381.16	-179.73	-170.90	12.00	12.00	0.00
Niobrara									
6,112.37	46.75	88.68	6,040.34	381.36	-170.84	-162.01	12.00	12.00	0.00
6,125.00	48.27	88.68	6,048.87	381.57	-161.52	-152.69	12.00	12.00	0.00
6,150.00	51.27	88.68	6,065.02	382.01	-142.44	-133.60	12.00	12.00	0.00
6,175.00	54.27	88.68	6,080.14	382.47	-122.54	-113.70	12.00	12.00	0.00
A Chalk									
6,180.33	54.91	88.68	6,083.23	382.57	-118.20	-109.36	12.00	12.00	0.00
6,200.00	57.27	88.68	6,094.20	382.95	-101.88	-93.03	12.00	12.00	0.00
A Marl									
6,201.84	57.49	88.68	6,095.19	382.98	-100.34	-91.49	12.00	12.00	0.00
6,225.00	60.27	88.68	6,107.16	383.44	-80.51	-71.66	12.00	12.00	0.00
6,250.00	63.27	88.68	6,118.98	383.95	-58.49	-49.63	12.00	12.00	0.00
6,275.00	66.27	88.68	6,129.64	384.47	-35.89	-27.02	12.00	12.00	0.00
6,300.00	69.27	88.68	6,139.10	385.00	-12.75	-3.88	12.00	12.00	0.00
Top B2 Chalk									
6,305.45	69.93	88.68	6,141.00	385.12	-7.64	1.23	12.00	12.00	0.00
6,325.00	72.27	88.68	6,147.33	385.54	10.84	19.72	12.00	12.00	0.00

Database:	EDMDBBW	Local Co-ordinate Reference:	Well Anschutz State 5-62-35-1724BH2
Company:	Bill Barrett Corp.	TVD Reference:	WELL @ 4632.00usft (Original Well Elev)
Project:	Weld Co., CO	MD Reference:	WELL @ 4632.00usft (Original Well Elev)
Site:	Sec.35-T5N-R62W	North Reference:	True
Well:	Anschutz State 5-62-35-1724BH2	Survey Calculation Method:	Minimum Curvature
Wellbore:	Wellbore #1		
Design:	Design #2		

Planned Survey									
Measured Depth (usft)	Inclination (°)	Azimuth (°)	Vertical Depth (usft)	+N/-S (usft)	+E/-W (usft)	Vertical Section (usft)	Dogleg Rate (°/100usft)	Build Rate (°/100usft)	Turn Rate (°/100usft)
6,350.00	75.27	88.68	6,154.32	386.09	34.84	43.72	12.00	12.00	0.00
6,375.00	78.27	88.68	6,160.04	386.65	59.16	68.06	12.00	12.00	0.00
6,400.00	81.27	88.68	6,164.47	387.22	83.76	92.66	12.00	12.00	0.00
6,425.00	84.27	88.68	6,167.62	387.79	108.55	117.45	12.00	12.00	0.00
6,450.00	87.27	88.68	6,169.46	388.37	133.47	142.38	12.00	12.00	0.00
Start 9748.55 hold at 6473.72 MD - 7" Csg.									
6,473.72	90.12	88.68	6,170.00	388.91	157.18	166.09	12.00	12.00	0.00
6,500.00	90.12	88.68	6,169.95	389.52	183.45	192.37	0.00	0.00	0.00
6,600.00	90.12	88.68	6,169.74	391.82	283.42	292.37	0.00	0.00	0.00
6,700.00	90.12	88.68	6,169.54	394.12	383.40	392.37	0.00	0.00	0.00
6,800.00	90.12	88.68	6,169.33	396.42	483.37	492.37	0.00	0.00	0.00
6,900.00	90.12	88.68	6,169.13	398.72	583.34	592.37	0.00	0.00	0.00
7,000.00	90.12	88.68	6,168.92	401.02	683.32	692.37	0.00	0.00	0.00
7,100.00	90.12	88.68	6,168.72	403.33	783.29	792.37	0.00	0.00	0.00
7,200.00	90.12	88.68	6,168.51	405.63	883.26	892.37	0.00	0.00	0.00
7,300.00	90.12	88.68	6,168.31	407.93	983.24	992.37	0.00	0.00	0.00
7,400.00	90.12	88.68	6,168.10	410.23	1,083.21	1,092.37	0.00	0.00	0.00
7,500.00	90.12	88.68	6,167.90	412.53	1,183.18	1,192.37	0.00	0.00	0.00
7,600.00	90.12	88.68	6,167.69	414.83	1,283.16	1,292.37	0.00	0.00	0.00
7,700.00	90.12	88.68	6,167.49	417.13	1,383.13	1,392.37	0.00	0.00	0.00
7,800.00	90.12	88.68	6,167.28	419.44	1,483.10	1,492.37	0.00	0.00	0.00
7,900.00	90.12	88.68	6,167.08	421.74	1,583.08	1,592.37	0.00	0.00	0.00
8,000.00	90.12	88.68	6,166.87	424.04	1,683.05	1,692.37	0.00	0.00	0.00
8,100.00	90.12	88.68	6,166.67	426.34	1,783.02	1,792.37	0.00	0.00	0.00
8,200.00	90.12	88.68	6,166.46	428.64	1,883.00	1,892.37	0.00	0.00	0.00
8,300.00	90.12	88.68	6,166.26	430.94	1,982.97	1,992.37	0.00	0.00	0.00
8,400.00	90.12	88.68	6,166.05	433.24	2,082.94	2,092.37	0.00	0.00	0.00
8,500.00	90.12	88.68	6,165.85	435.55	2,182.92	2,192.37	0.00	0.00	0.00
8,600.00	90.12	88.68	6,165.64	437.85	2,282.89	2,292.37	0.00	0.00	0.00
8,700.00	90.12	88.68	6,165.44	440.15	2,382.86	2,392.37	0.00	0.00	0.00
8,800.00	90.12	88.68	6,165.23	442.45	2,482.84	2,492.37	0.00	0.00	0.00
8,900.00	90.12	88.68	6,165.03	444.75	2,582.81	2,592.37	0.00	0.00	0.00
9,000.00	90.12	88.68	6,164.82	447.05	2,682.78	2,692.37	0.00	0.00	0.00
9,100.00	90.12	88.68	6,164.62	449.35	2,782.76	2,792.37	0.00	0.00	0.00
9,200.00	90.12	88.68	6,164.41	451.66	2,882.73	2,892.37	0.00	0.00	0.00
9,300.00	90.12	88.68	6,164.20	453.96	2,982.70	2,992.37	0.00	0.00	0.00
9,400.00	90.12	88.68	6,164.00	456.26	3,082.68	3,092.37	0.00	0.00	0.00
9,500.00	90.12	88.68	6,163.79	458.56	3,182.65	3,192.37	0.00	0.00	0.00
9,600.00	90.12	88.68	6,163.59	460.86	3,282.62	3,292.37	0.00	0.00	0.00
9,700.00	90.12	88.68	6,163.38	463.16	3,382.60	3,392.37	0.00	0.00	0.00
9,800.00	90.12	88.68	6,163.18	465.47	3,482.57	3,492.37	0.00	0.00	0.00
9,900.00	90.12	88.68	6,162.97	467.77	3,582.54	3,592.37	0.00	0.00	0.00
10,000.00	90.12	88.68	6,162.77	470.07	3,682.52	3,692.37	0.00	0.00	0.00
10,100.00	90.12	88.68	6,162.56	472.37	3,782.49	3,792.37	0.00	0.00	0.00
10,200.00	90.12	88.68	6,162.36	474.67	3,882.46	3,892.37	0.00	0.00	0.00
10,300.00	90.12	88.68	6,162.15	476.97	3,982.44	3,992.37	0.00	0.00	0.00
10,400.00	90.12	88.68	6,161.95	479.27	4,082.41	4,092.37	0.00	0.00	0.00
10,500.00	90.12	88.68	6,161.74	481.58	4,182.38	4,192.37	0.00	0.00	0.00
10,600.00	90.12	88.68	6,161.54	483.88	4,282.36	4,292.37	0.00	0.00	0.00
10,700.00	90.12	88.68	6,161.33	486.18	4,382.33	4,392.37	0.00	0.00	0.00
10,800.00	90.12	88.68	6,161.13	488.48	4,482.30	4,492.37	0.00	0.00	0.00
10,900.00	90.12	88.68	6,160.92	490.78	4,582.28	4,592.36	0.00	0.00	0.00
11,000.00	90.12	88.68	6,160.72	493.08	4,682.25	4,692.36	0.00	0.00	0.00

Database:	EDMDBBW	Local Co-ordinate Reference:	Well Anschutz State 5-62-35-1724BH2
Company:	Bill Barrett Corp.	TVD Reference:	WELL @ 4632.00usft (Original Well Elev)
Project:	Weld Co., CO	MD Reference:	WELL @ 4632.00usft (Original Well Elev)
Site:	Sec.35-T5N-R62W	North Reference:	True
Well:	Anschutz State 5-62-35-1724BH2	Survey Calculation Method:	Minimum Curvature
Wellbore:	Wellbore #1		
Design:	Design #2		

Planned Survey										
Measured Depth (usft)	Inclination (°)	Azimuth (°)	Vertical Depth (usft)	+N/-S (usft)	+E/-W (usft)	Vertical Section (usft)	Dogleg Rate (°/100usft)	Build Rate (°/100usft)	Turn Rate (°/100usft)	
11,100.00	90.12	88.68	6,160.51	495.38	4,782.22	4,792.36	0.00	0.00	0.00	
11,200.00	90.12	88.68	6,160.31	497.69	4,882.20	4,892.36	0.00	0.00	0.00	
11,300.00	90.12	88.68	6,160.10	499.99	4,982.17	4,992.36	0.00	0.00	0.00	
11,400.00	90.12	88.68	6,159.90	502.29	5,082.14	5,092.36	0.00	0.00	0.00	
11,500.00	90.12	88.68	6,159.69	504.59	5,182.11	5,192.36	0.00	0.00	0.00	
11,600.00	90.12	88.68	6,159.49	506.89	5,282.09	5,292.36	0.00	0.00	0.00	
11,700.00	90.12	88.68	6,159.28	509.19	5,382.06	5,392.36	0.00	0.00	0.00	
11,800.00	90.12	88.68	6,159.08	511.50	5,482.03	5,492.36	0.00	0.00	0.00	
11,900.00	90.12	88.68	6,158.87	513.80	5,582.01	5,592.36	0.00	0.00	0.00	
12,000.00	90.12	88.68	6,158.66	516.10	5,681.98	5,692.36	0.00	0.00	0.00	
12,100.00	90.12	88.68	6,158.46	518.40	5,781.95	5,792.36	0.00	0.00	0.00	
12,200.00	90.12	88.68	6,158.25	520.70	5,881.93	5,892.36	0.00	0.00	0.00	
12,300.00	90.12	88.68	6,158.05	523.00	5,981.90	5,992.36	0.00	0.00	0.00	
12,400.00	90.12	88.68	6,157.84	525.30	6,081.87	6,092.36	0.00	0.00	0.00	
12,500.00	90.12	88.68	6,157.64	527.61	6,181.85	6,192.36	0.00	0.00	0.00	
12,600.00	90.12	88.68	6,157.43	529.91	6,281.82	6,292.36	0.00	0.00	0.00	
12,700.00	90.12	88.68	6,157.23	532.21	6,381.79	6,392.36	0.00	0.00	0.00	
12,800.00	90.12	88.68	6,157.02	534.51	6,481.77	6,492.36	0.00	0.00	0.00	
12,900.00	90.12	88.68	6,156.82	536.81	6,581.74	6,592.36	0.00	0.00	0.00	
13,000.00	90.12	88.68	6,156.61	539.11	6,681.71	6,692.36	0.00	0.00	0.00	
13,100.00	90.12	88.68	6,156.41	541.41	6,781.69	6,792.36	0.00	0.00	0.00	
13,200.00	90.12	88.68	6,156.20	543.72	6,881.66	6,892.36	0.00	0.00	0.00	
13,300.00	90.12	88.68	6,156.00	546.02	6,981.63	6,992.36	0.00	0.00	0.00	
13,400.00	90.12	88.68	6,155.79	548.32	7,081.61	7,092.36	0.00	0.00	0.00	
13,500.00	90.12	88.68	6,155.59	550.62	7,181.58	7,192.36	0.00	0.00	0.00	
13,600.00	90.12	88.68	6,155.38	552.92	7,281.55	7,292.36	0.00	0.00	0.00	
13,700.00	90.12	88.68	6,155.18	555.22	7,381.53	7,392.36	0.00	0.00	0.00	
13,800.00	90.12	88.68	6,154.97	557.52	7,481.50	7,492.36	0.00	0.00	0.00	
13,900.00	90.12	88.68	6,154.77	559.83	7,581.47	7,592.36	0.00	0.00	0.00	
14,000.00	90.12	88.68	6,154.56	562.13	7,681.45	7,692.36	0.00	0.00	0.00	
14,100.00	90.12	88.68	6,154.36	564.43	7,781.42	7,792.36	0.00	0.00	0.00	
14,200.00	90.12	88.68	6,154.15	566.73	7,881.39	7,892.36	0.00	0.00	0.00	
14,300.00	90.12	88.68	6,153.95	569.03	7,981.37	7,992.36	0.00	0.00	0.00	
14,400.00	90.12	88.68	6,153.74	571.33	8,081.34	8,092.36	0.00	0.00	0.00	
14,500.00	90.12	88.68	6,153.54	573.64	8,181.31	8,192.36	0.00	0.00	0.00	
14,600.00	90.12	88.68	6,153.33	575.94	8,281.29	8,292.36	0.00	0.00	0.00	
14,700.00	90.12	88.68	6,153.13	578.24	8,381.26	8,392.36	0.00	0.00	0.00	
14,800.00	90.12	88.68	6,152.92	580.54	8,481.23	8,492.36	0.00	0.00	0.00	
14,900.00	90.12	88.68	6,152.71	582.84	8,581.21	8,592.36	0.00	0.00	0.00	
15,000.00	90.12	88.68	6,152.51	585.14	8,681.18	8,692.36	0.00	0.00	0.00	
15,100.00	90.12	88.68	6,152.30	587.44	8,781.15	8,792.36	0.00	0.00	0.00	
15,200.00	90.12	88.68	6,152.10	589.75	8,881.13	8,892.36	0.00	0.00	0.00	
15,300.00	90.12	88.68	6,151.89	592.05	8,981.10	8,992.36	0.00	0.00	0.00	
15,400.00	90.12	88.68	6,151.69	594.35	9,081.07	9,092.36	0.00	0.00	0.00	
15,500.00	90.12	88.68	6,151.48	596.65	9,181.05	9,192.36	0.00	0.00	0.00	
15,600.00	90.12	88.68	6,151.28	598.95	9,281.02	9,292.36	0.00	0.00	0.00	
15,700.00	90.12	88.68	6,151.07	601.25	9,380.99	9,392.35	0.00	0.00	0.00	
15,800.00	90.12	88.68	6,150.87	603.55	9,480.97	9,492.35	0.00	0.00	0.00	
15,900.00	90.12	88.68	6,150.66	605.86	9,580.94	9,592.35	0.00	0.00	0.00	
16,000.00	90.12	88.68	6,150.46	608.16	9,680.91	9,692.35	0.00	0.00	0.00	
16,100.00	90.12	88.68	6,150.25	610.46	9,780.89	9,792.35	0.00	0.00	0.00	
16,200.00	90.12	88.68	6,150.05	612.76	9,880.86	9,892.35	0.00	0.00	0.00	
TD at 16222.27										
16,222.27	90.12	88.68	6,150.00	613.27	9,903.13	9,914.63	0.00	0.00	0.00	

Database:	EDMDBBW	Local Co-ordinate Reference:	Well Anschutz State 5-62-35-1724BH2
Company:	Bill Barrett Corp.	TVD Reference:	WELL @ 4632.00usft (Original Well Elev)
Project:	Weld Co., CO	MD Reference:	WELL @ 4632.00usft (Original Well Elev)
Site:	Sec.35-T5N-R62W	North Reference:	True
Well:	Anschutz State 5-62-35-1724BH2	Survey Calculation Method:	Minimum Curvature
Wellbore:	Wellbore #1		
Design:	Design #2		

Planned Survey									
Measured Depth (usft)	Inclination (°)	Azimuth (°)	Vertical Depth (usft)	+N/-S (usft)	+E/-W (usft)	Vertical Section (usft)	Dogleg Rate (°/100usft)	Build Rate (°/100usft)	Turn Rate (°/100usft)

Design Targets									
Target Name	Dip Angle (°)	Dip Dir. (°)	TVD (usft)	+N/-S (usft)	+E/-W (usft)	Northing (usft)	Easting (usft)	Latitude	Longitude
- hit/miss target									
- Shape									
Anschutz State 5-62-35-	0.00	0.00	6,150.00	613.27	9,903.13	1,376,033.749	3,344,633.870	40° 21' 32.461 N	104° 15' 47.840 W
- plan hits target center									
- Point									

Casing Points					
Measured Depth (usft)	Vertical Depth (usft)	Name	Casing Diameter (")	Hole Diameter (")	
6,473.72	6,170.00	7" Csg.	7	8-3/4	

Formations						
Measured Depth (usft)	Vertical Depth (usft)	Name	Lithology	Dip (°)	Dip Direction (°)	
4,017.09	3,994.00	Sussex		-0.12	88.68	
4,831.63	4,802.00	Shannon		-0.12	88.68	
5,974.18	5,932.00	Sharon Springs		-0.12	88.64	
6,112.37	6,040.00	Niobrara		-0.12	88.68	
6,180.33	6,083.00	A Chalk		-0.12	88.68	
6,201.84	6,095.00	A Marl		-0.12	88.68	
6,305.45	6,141.00	Top B2 Chalk		-0.12	88.68	

Plan Annotations					
Measured Depth (usft)	Vertical Depth (usft)	Local Coordinates		Comment	
		+N/-S (usft)	+E/-W (usft)		
900.00	900.00	0.00	0.00	Start Build 2.00	
1,259.36	1,258.42	17.15	-14.58	Start 3604.02 hold at 1259.36 MD	
4,863.38	4,834.12	360.75	-306.56	Start Drop -2.00	
5,222.74	5,192.54	377.90	-321.14	Start 500.00 hold at 5222.74 MD	
5,722.74	5,692.54	377.90	-321.14	Start Build 12.00	
6,473.72	6,170.00	388.91	157.18	Start 9748.55 hold at 6473.72 MD	
16,222.27	6,150.00	613.27	9,903.13	TD at 16222.27	