

Bayswater Exploration & Production, LLC

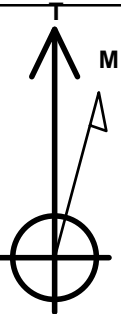
Well Name: **Carlson F-15-16HN**

Surface Location: Carlson 15-D Pad Sec.15-T5N-R65W
North American Datum 1983 , US State Plane 1983 , Colorado Northern Zone
Ground Elevation: 4621.0
+N/-S +E/-W Northing Easting Latitude Longitude Slot
0.0 0.0 1391065.31 3239202.17 40.403696 -104.641077
RKB - 22.5' WELL @ 4643.5ft (RKB - 22.5')

WELLBORE TARGET DETAILS

Name	TVD	+N/-S	+E/-W	Shape
SHL 1056'FNL, 309'FEL, SEC.15	1.0	0.0	0.0	Point
BHL 1100'FNL, 2340'FWL, SEC.16	6878.5	-88.3	-7926.3	Point

Carlson 15-D Pad Sec.15-T5N-R65W
Carlson F-15-16HN
Plan #2 (6-18-15)
12:55, June 18 2015

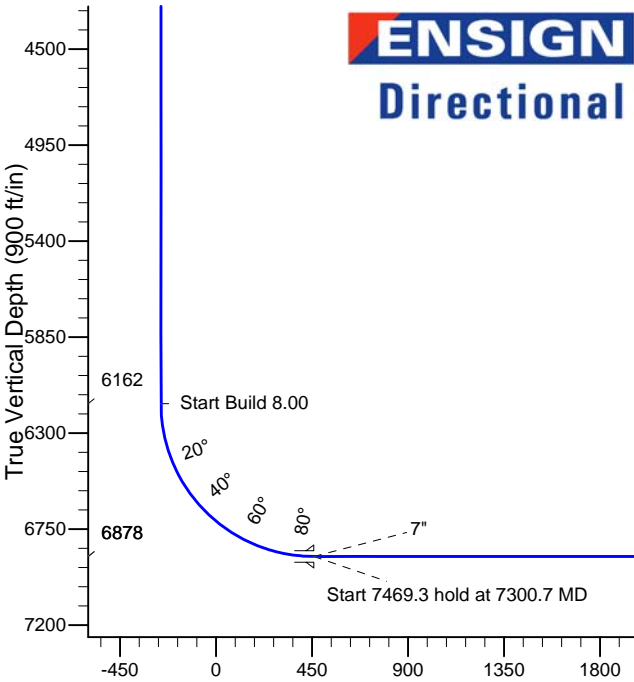
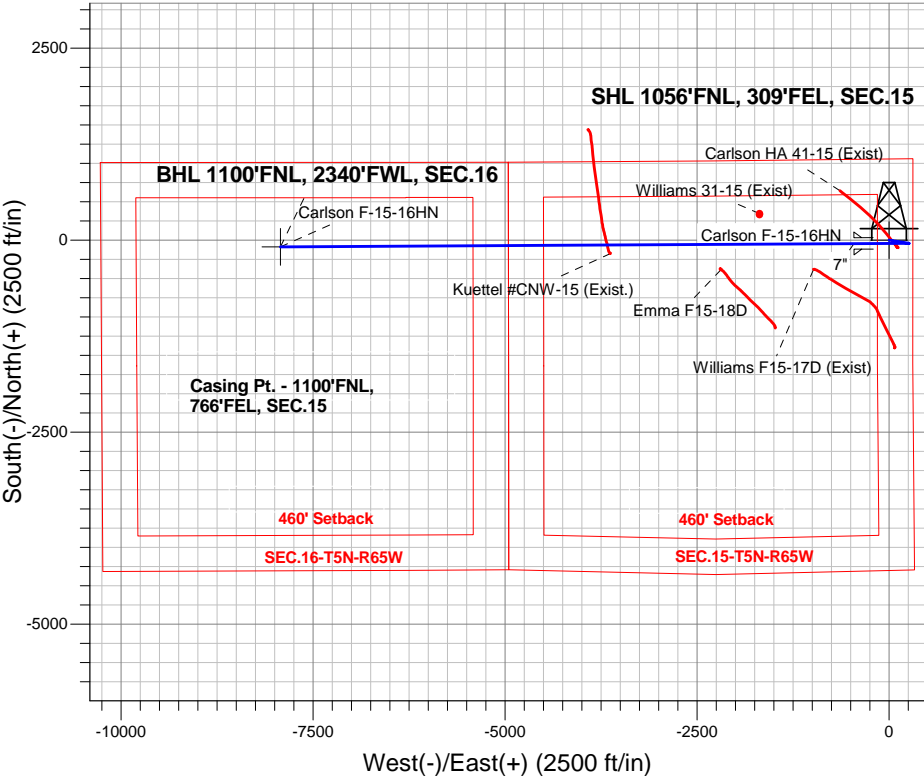


Azimuths to True North
Magnetic North: 8.26°

Magnetic Field
Strength: 52725.3nT
Dip Angle: 66.93°
Date: 6/18/2015
Model: IGRF2010

ANNOTATIONS

TVD	MD	Annotation
1200.0	1200.0	KOP - Start Build 1.50
3693.9	3706.7	Start Drop -2.00
4000.0	4013.4	Start 2162.3 hold at 4013.4 MD
6162.3	6175.7	Start Build 8.00
6878.5	7300.7	Start 7469.3 hold at 7300.7 MD
6878.5	14769.9	TD at 14769.9



SECTION DETAILS

Sec	MD	Inc	Azi	TVD	+N/-S	+E/-W	DLeg	TFace	VSec	Target
1	0.0	0.00	0.00	0.0	0.0	0.0	0.00	0.00	0.0	
2	1200.0	0.00	0.00	1200.0	0.0	0.0	0.00	0.00	0.0	
3	1608.9	6.13	99.28	1608.2	-3.5	21.6	1.50	99.28	-21.5	
4	3706.7	6.13	99.28	3693.9	-39.7	242.8	0.00	0.00	-242.4	
5	4013.4	0.00	0.00	4000.0	-42.3	259.0	2.00	180.00	-258.5	
6	6175.7	0.00	0.00	6162.3	-42.3	259.0	0.00	0.00	-258.5	
7	7300.7	90.00	269.68	6878.5	-46.3	-457.2	8.00	269.68	457.7	
8	14769.9	90.00	269.68	6878.5	-88.3	-7926.3	0.00	0.00	7926.8	BHL 1100'FNL, 2340'FWL, SEC.16

Vertical Section at 269.36° (900 ft/in)



Bayswater Exploration & Production, LLC

SEC.15-T5N-R65W

Carlson 15-D Pad Sec.15-T5N-R65W

Carlson F-15-16HN

Wellbore #1

Plan: Plan #2 (6-18-15)

Standard Planning Report

18 June, 2015



BAYSWATER
EXPLORATION & PRODUCTION, LLC

Database:	EDMNEW	Local Co-ordinate Reference:	Well Carlson F-15-16HN
Company:	Bayswater Exploration & Production, LLC	TVD Reference:	WELL @ 4643.5ft (RKB - 22.5')
Project:	SEC.15-T5N-R65W	MD Reference:	WELL @ 4643.5ft (RKB - 22.5')
Site:	Carlson 15-D Pad Sec.15-T5N-R65W	North Reference:	True
Well:	Carlson F-15-16HN	Survey Calculation Method:	Minimum Curvature
Wellbore:	Wellbore #1		
Design:	Plan #2 (6-18-15)		

Project	SEC.15-T5N-R65W, Weld County, Colorado		
Map System:	US State Plane 1983	System Datum:	Mean Sea Level
Geo Datum:	North American Datum 1983		Using Well Reference Point
Map Zone:	Colorado Northern Zone		Using geodetic scale factor

Site		Carlson 15-D Pad Sec.15-T5N-R65W				
Site Position:		Northing:	1,391,065.32 ft	Latitude:	40.403694	
From:	Lat/Long	Easting:	3,239,277.09 ft	Longitude:	-104.640808	
Position Uncertainty:		0.0 ft	Slot Radius:	"	Grid Convergence:	0.56 °

Well	Carlson F-15-16HN					
Well Position	+N-S	0.7 ft	Northing:	1,391,065.31 ft	Latitude:	40.403696
	+E-W	-74.9 ft	Easting:	3,239,202.17 ft	Longitude:	-104.641077
Position Uncertainty		0.0 ft	Wellhead Elevation:	ft	Ground Level:	4,621.0 ft

Wellbore	Wellbore #1				
Magnetics	Model Name	Sample Date	Declination (°)	Dip Angle (°)	Field Strength (nT)
	IGRF2010	6/18/2015	8.26	66.93	52,725

Design	Plan #2 (6-18-15)			
Audit Notes:				
Version:	Phase:	PROTOTYPE	Tie On Depth:	0.0
Vertical Section:	Depth From (TVD) (ft)	+N/-S (ft)	+E/-W (ft)	Direction (°)
	0.0	0.0	0.0	269.36

Plan Sections										
Measured Depth (ft)	Inclination (°)	Azimuth (°)	Vertical Depth (ft)	+N/-S (ft)	+E/-W (ft)	Dogleg Rate (°/100ft)	Build Rate (°/100ft)	Turn Rate (°/100ft)	TFO (°)	Target
0.0	0.00	0.00	0.0	0.0	0.0	0.00	0.00	0.00	0.00	
1,200.0	0.00	0.00	1,200.0	0.0	0.0	0.00	0.00	0.00	0.00	
1,608.9	6.13	99.28	1,608.2	-3.5	21.6	1.50	1.50	0.00	99.28	
3,706.7	6.13	99.28	3,693.9	-39.7	242.8	0.00	0.00	0.00	0.00	
4,013.4	0.00	0.00	4,000.0	-42.3	259.0	2.00	-2.00	0.00	180.00	
6,175.7	0.00	0.00	6,162.3	-42.3	259.0	0.00	0.00	0.00	0.00	
7,300.7	90.00	269.68	6,878.5	-46.3	-457.2	8.00	8.00	0.00	269.68	
14,769.9	90.00	269.68	6,878.5	-88.3	-7,926.3	0.00	0.00	0.00	0.00	BHL 1100'FNL, 234

Database:	EDMNEW	Local Co-ordinate Reference:	Well Carlson F-15-16HN
Company:	Bayswater Exploration & Production, LLC	TVD Reference:	WELL @ 4643.5ft (RKB - 22.5')
Project:	SEC.15-T5N-R65W	MD Reference:	WELL @ 4643.5ft (RKB - 22.5')
Site:	Carlson 15-D Pad Sec.15-T5N-R65W	North Reference:	True
Well:	Carlson F-15-16HN	Survey Calculation Method:	Minimum Curvature
Wellbore:	Wellbore #1		
Design:	Plan #2 (6-18-15)		

Planned Survey									
Measured Depth (ft)	Inclination (°)	Azimuth (°)	Vertical Depth (ft)	+N/-S (ft)	+E/-W (ft)	Vertical Section (ft)	Dogleg Rate (°/100ft)	Build Rate (°/100ft)	Turn Rate (°/100ft)
0.0	0.00	0.00	0.0	0.0	0.0	0.0	0.00	0.00	0.00
100.0	0.00	0.00	100.0	0.0	0.0	0.0	0.00	0.00	0.00
200.0	0.00	0.00	200.0	0.0	0.0	0.0	0.00	0.00	0.00
300.0	0.00	0.00	300.0	0.0	0.0	0.0	0.00	0.00	0.00
400.0	0.00	0.00	400.0	0.0	0.0	0.0	0.00	0.00	0.00
500.0	0.00	0.00	500.0	0.0	0.0	0.0	0.00	0.00	0.00
600.0	0.00	0.00	600.0	0.0	0.0	0.0	0.00	0.00	0.00
700.0	0.00	0.00	700.0	0.0	0.0	0.0	0.00	0.00	0.00
800.0	0.00	0.00	800.0	0.0	0.0	0.0	0.00	0.00	0.00
900.0	0.00	0.00	900.0	0.0	0.0	0.0	0.00	0.00	0.00
1,000.0	0.00	0.00	1,000.0	0.0	0.0	0.0	0.00	0.00	0.00
1,100.0	0.00	0.00	1,100.0	0.0	0.0	0.0	0.00	0.00	0.00
1,200.0	0.00	0.00	1,200.0	0.0	0.0	0.0	0.00	0.00	0.00
KOP - Start Build 1.50									
1,300.0	1.50	99.28	1,300.0	-0.2	1.3	-1.3	1.50	1.50	0.00
1,400.0	3.00	99.28	1,399.9	-0.8	5.2	-5.2	1.50	1.50	0.00
1,500.0	4.50	99.28	1,499.7	-1.9	11.6	-11.6	1.50	1.50	0.00
1,600.0	6.00	99.28	1,599.3	-3.4	20.7	-20.6	1.50	1.50	0.00
1,608.9	6.13	99.28	1,608.2	-3.5	21.6	-21.5	1.50	1.50	0.00
1,700.0	6.13	99.28	1,698.7	-5.1	31.2	-31.1	0.00	0.00	0.00
1,800.0	6.13	99.28	1,798.1	-6.8	41.7	-41.7	0.00	0.00	0.00
1,900.0	6.13	99.28	1,897.6	-8.5	52.3	-52.2	0.00	0.00	0.00
2,000.0	6.13	99.28	1,997.0	-10.3	62.8	-62.7	0.00	0.00	0.00
2,100.0	6.13	99.28	2,096.4	-12.0	73.4	-73.2	0.00	0.00	0.00
2,200.0	6.13	99.28	2,195.8	-13.7	83.9	-83.8	0.00	0.00	0.00
2,300.0	6.13	99.28	2,295.3	-15.4	94.5	-94.3	0.00	0.00	0.00
2,400.0	6.13	99.28	2,394.7	-17.2	105.0	-104.8	0.00	0.00	0.00
2,500.0	6.13	99.28	2,494.1	-18.9	115.6	-115.3	0.00	0.00	0.00
2,600.0	6.13	99.28	2,593.5	-20.6	126.1	-125.9	0.00	0.00	0.00
2,700.0	6.13	99.28	2,693.0	-22.3	136.6	-136.4	0.00	0.00	0.00
2,800.0	6.13	99.28	2,792.4	-24.0	147.2	-146.9	0.00	0.00	0.00
2,900.0	6.13	99.28	2,891.8	-25.8	157.7	-157.4	0.00	0.00	0.00
3,000.0	6.13	99.28	2,991.3	-27.5	168.3	-168.0	0.00	0.00	0.00
3,100.0	6.13	99.28	3,090.7	-29.2	178.8	-178.5	0.00	0.00	0.00
3,200.0	6.13	99.28	3,190.1	-30.9	189.4	-189.0	0.00	0.00	0.00
3,300.0	6.13	99.28	3,289.5	-32.7	199.9	-199.5	0.00	0.00	0.00
3,400.0	6.13	99.28	3,389.0	-34.4	210.5	-210.1	0.00	0.00	0.00
3,500.0	6.13	99.28	3,488.4	-36.1	221.0	-220.6	0.00	0.00	0.00
3,600.0	6.13	99.28	3,587.8	-37.8	231.6	-231.1	0.00	0.00	0.00
3,700.0	6.13	99.28	3,687.2	-39.5	242.1	-241.7	0.00	0.00	0.00
3,706.7	6.13	99.28	3,693.9	-39.7	242.8	-242.4	0.00	0.00	0.00
Start Drop -2.00									
3,800.0	4.27	99.28	3,786.8	-41.0	251.2	-250.7	2.00	-2.00	0.00
3,900.0	2.27	99.28	3,886.7	-41.9	256.8	-256.3	2.00	-2.00	0.00
4,000.0	0.27	99.28	3,986.6	-42.3	259.0	-258.5	2.00	-2.00	0.00
4,013.4	0.00	0.00	4,000.0	-42.3	259.0	-258.5	2.00	-2.00	0.00
Start 2162.3 hold at 4013.4 MD									
4,100.0	0.00	0.00	4,086.6	-42.3	259.0	-258.5	0.00	0.00	0.00
4,200.0	0.00	0.00	4,186.6	-42.3	259.0	-258.5	0.00	0.00	0.00
4,300.0	0.00	0.00	4,286.6	-42.3	259.0	-258.5	0.00	0.00	0.00
4,400.0	0.00	0.00	4,386.6	-42.3	259.0	-258.5	0.00	0.00	0.00
4,500.0	0.00	0.00	4,486.6	-42.3	259.0	-258.5	0.00	0.00	0.00
4,600.0	0.00	0.00	4,586.6	-42.3	259.0	-258.5	0.00	0.00	0.00

Database:	EDMNEW	Local Co-ordinate Reference:	Well Carlson F-15-16HN
Company:	Bayswater Exploration & Production, LLC	TVD Reference:	WELL @ 4643.5ft (RKB - 22.5')
Project:	SEC.15-T5N-R65W	MD Reference:	WELL @ 4643.5ft (RKB - 22.5')
Site:	Carlson 15-D Pad Sec.15-T5N-R65W	North Reference:	True
Well:	Carlson F-15-16HN	Survey Calculation Method:	Minimum Curvature
Wellbore:	Wellbore #1		
Design:	Plan #2 (6-18-15)		

Planned Survey									
Measured Depth (ft)	Inclination (°)	Azimuth (°)	Vertical Depth (ft)	+N/-S (ft)	+E/-W (ft)	Vertical Section (ft)	Dogleg Rate (°/100ft)	Build Rate (°/100ft)	Turn Rate (°/100ft)
4,700.0	0.00	0.00	4,686.6	-42.3	259.0	-258.5	0.00	0.00	0.00
4,800.0	0.00	0.00	4,786.6	-42.3	259.0	-258.5	0.00	0.00	0.00
4,900.0	0.00	0.00	4,886.6	-42.3	259.0	-258.5	0.00	0.00	0.00
5,000.0	0.00	0.00	4,986.6	-42.3	259.0	-258.5	0.00	0.00	0.00
5,100.0	0.00	0.00	5,086.6	-42.3	259.0	-258.5	0.00	0.00	0.00
5,200.0	0.00	0.00	5,186.6	-42.3	259.0	-258.5	0.00	0.00	0.00
5,300.0	0.00	0.00	5,286.6	-42.3	259.0	-258.5	0.00	0.00	0.00
5,400.0	0.00	0.00	5,386.6	-42.3	259.0	-258.5	0.00	0.00	0.00
5,500.0	0.00	0.00	5,486.6	-42.3	259.0	-258.5	0.00	0.00	0.00
5,600.0	0.00	0.00	5,586.6	-42.3	259.0	-258.5	0.00	0.00	0.00
5,700.0	0.00	0.00	5,686.6	-42.3	259.0	-258.5	0.00	0.00	0.00
5,800.0	0.00	0.00	5,786.6	-42.3	259.0	-258.5	0.00	0.00	0.00
5,900.0	0.00	0.00	5,886.6	-42.3	259.0	-258.5	0.00	0.00	0.00
6,000.0	0.00	0.00	5,986.6	-42.3	259.0	-258.5	0.00	0.00	0.00
6,100.0	0.00	0.00	6,086.6	-42.3	259.0	-258.5	0.00	0.00	0.00
6,175.7	0.00	0.00	6,162.3	-42.3	259.0	-258.5	0.00	0.00	0.00
Start Build 8.00									
6,200.0	1.95	269.68	6,186.6	-42.3	258.6	-258.1	8.01	8.01	0.00
6,300.0	9.95	269.68	6,286.0	-42.4	248.2	-247.7	8.00	8.00	0.00
6,400.0	17.95	269.68	6,383.0	-42.5	224.2	-223.7	8.00	8.00	0.00
6,500.0	25.95	269.68	6,475.7	-42.7	186.8	-186.3	8.00	8.00	0.00
6,600.0	33.95	269.68	6,562.2	-43.0	136.9	-136.5	8.00	8.00	0.00
6,700.0	41.95	269.68	6,641.0	-43.3	75.5	-75.0	8.00	8.00	0.00
6,800.0	49.95	269.68	6,710.5	-43.7	3.7	-3.2	8.00	8.00	0.00
6,900.0	57.95	269.68	6,769.3	-44.2	-77.1	77.6	8.00	8.00	0.00
7,000.0	65.95	269.68	6,816.3	-44.7	-165.3	165.8	8.00	8.00	0.00
7,100.0	73.95	269.68	6,850.6	-45.2	-259.1	259.6	8.00	8.00	0.00
7,200.0	81.95	269.68	6,871.4	-45.8	-356.8	357.3	8.00	8.00	0.00
7,300.0	89.95	269.68	6,878.5	-46.3	-456.5	457.0	8.00	8.00	0.00
7,300.7	90.00	269.68	6,878.5	-46.3	-457.2	457.7	7.78	7.78	0.00
Start 7469.3 hold at 7300.7 MD - 7"									
7,400.0	90.00	269.68	6,878.5	-46.9	-556.5	557.0	0.00	0.00	0.00
7,500.0	90.00	269.68	6,878.5	-47.4	-656.5	657.0	0.00	0.00	0.00
7,600.0	90.00	269.68	6,878.5	-48.0	-756.5	757.0	0.00	0.00	0.00
7,700.0	90.00	269.68	6,878.5	-48.6	-856.5	857.0	0.00	0.00	0.00
7,800.0	90.00	269.68	6,878.5	-49.1	-956.5	957.0	0.00	0.00	0.00
7,900.0	90.00	269.68	6,878.5	-49.7	-1,056.5	1,057.0	0.00	0.00	0.00
8,000.0	90.00	269.68	6,878.5	-50.3	-1,156.5	1,157.0	0.00	0.00	0.00
8,100.0	90.00	269.68	6,878.5	-50.8	-1,256.5	1,257.0	0.00	0.00	0.00
8,200.0	90.00	269.68	6,878.5	-51.4	-1,356.5	1,357.0	0.00	0.00	0.00
8,300.0	90.00	269.68	6,878.5	-51.9	-1,456.5	1,457.0	0.00	0.00	0.00
8,400.0	90.00	269.68	6,878.5	-52.5	-1,556.5	1,557.0	0.00	0.00	0.00
8,500.0	90.00	269.68	6,878.5	-53.1	-1,656.5	1,657.0	0.00	0.00	0.00
8,600.0	90.00	269.68	6,878.5	-53.6	-1,756.5	1,757.0	0.00	0.00	0.00
8,700.0	90.00	269.68	6,878.5	-54.2	-1,856.5	1,857.0	0.00	0.00	0.00
8,800.0	90.00	269.68	6,878.5	-54.8	-1,956.5	1,957.0	0.00	0.00	0.00
8,900.0	90.00	269.68	6,878.5	-55.3	-2,056.5	2,057.0	0.00	0.00	0.00
9,000.0	90.00	269.68	6,878.5	-55.9	-2,156.5	2,157.0	0.00	0.00	0.00
9,100.0	90.00	269.68	6,878.5	-56.4	-2,256.5	2,257.0	0.00	0.00	0.00
9,200.0	90.00	269.68	6,878.5	-57.0	-2,356.5	2,357.0	0.00	0.00	0.00
9,300.0	90.00	269.68	6,878.5	-57.6	-2,456.5	2,457.0	0.00	0.00	0.00
9,400.0	90.00	269.68	6,878.5	-58.1	-2,556.5	2,557.0	0.00	0.00	0.00
9,500.0	90.00	269.68	6,878.5	-58.7	-2,656.5	2,657.0	0.00	0.00	0.00
9,600.0	90.00	269.68	6,878.5	-59.3	-2,756.5	2,757.0	0.00	0.00	0.00

Database:	EDMNEW	Local Co-ordinate Reference:	Well Carlson F-15-16HN
Company:	Bayswater Exploration & Production, LLC	TVD Reference:	WELL @ 4643.5ft (RKB - 22.5')
Project:	SEC.15-T5N-R65W	MD Reference:	WELL @ 4643.5ft (RKB - 22.5')
Site:	Carlson 15-D Pad Sec.15-T5N-R65W	North Reference:	True
Well:	Carlson F-15-16HN	Survey Calculation Method:	Minimum Curvature
Wellbore:	Wellbore #1		
Design:	Plan #2 (6-18-15)		

Planned Survey										
Measured Depth (ft)	Inclination (°)	Azimuth (°)	Vertical Depth (ft)	+N/-S (ft)	+E/-W (ft)	Vertical Section (ft)	Dogleg Rate (°/100ft)	Build Rate (°/100ft)	Turn Rate (°/100ft)	
9,700.0	90.00	269.68	6,878.5	-59.8	-2,856.5	2,857.0	0.00	0.00	0.00	
9,800.0	90.00	269.68	6,878.5	-60.4	-2,956.5	2,957.0	0.00	0.00	0.00	
9,900.0	90.00	269.68	6,878.5	-60.9	-3,056.5	3,057.0	0.00	0.00	0.00	
10,000.0	90.00	269.68	6,878.5	-61.5	-3,156.5	3,157.0	0.00	0.00	0.00	
10,100.0	90.00	269.68	6,878.5	-62.1	-3,256.5	3,257.0	0.00	0.00	0.00	
10,200.0	90.00	269.68	6,878.5	-62.6	-3,356.5	3,357.0	0.00	0.00	0.00	
10,300.0	90.00	269.68	6,878.5	-63.2	-3,456.5	3,456.9	0.00	0.00	0.00	
10,400.0	90.00	269.68	6,878.5	-63.8	-3,556.5	3,556.9	0.00	0.00	0.00	
10,500.0	90.00	269.68	6,878.5	-64.3	-3,656.5	3,656.9	0.00	0.00	0.00	
10,600.0	90.00	269.68	6,878.5	-64.9	-3,756.5	3,756.9	0.00	0.00	0.00	
10,700.0	90.00	269.68	6,878.5	-65.4	-3,856.5	3,856.9	0.00	0.00	0.00	
10,800.0	90.00	269.68	6,878.5	-66.0	-3,956.5	3,956.9	0.00	0.00	0.00	
10,900.0	90.00	269.68	6,878.5	-66.6	-4,056.4	4,056.9	0.00	0.00	0.00	
11,000.0	90.00	269.68	6,878.5	-67.1	-4,156.4	4,156.9	0.00	0.00	0.00	
11,100.0	90.00	269.68	6,878.5	-67.7	-4,256.4	4,256.9	0.00	0.00	0.00	
11,200.0	90.00	269.68	6,878.5	-68.3	-4,356.4	4,356.9	0.00	0.00	0.00	
11,300.0	90.00	269.68	6,878.5	-68.8	-4,456.4	4,456.9	0.00	0.00	0.00	
11,400.0	90.00	269.68	6,878.5	-69.4	-4,556.4	4,556.9	0.00	0.00	0.00	
11,500.0	90.00	269.68	6,878.5	-69.9	-4,656.4	4,656.9	0.00	0.00	0.00	
11,600.0	90.00	269.68	6,878.5	-70.5	-4,756.4	4,756.9	0.00	0.00	0.00	
11,700.0	90.00	269.68	6,878.5	-71.1	-4,856.4	4,856.9	0.00	0.00	0.00	
11,800.0	90.00	269.68	6,878.5	-71.6	-4,956.4	4,956.9	0.00	0.00	0.00	
11,900.0	90.00	269.68	6,878.5	-72.2	-5,056.4	5,056.9	0.00	0.00	0.00	
12,000.0	90.00	269.68	6,878.5	-72.8	-5,156.4	5,156.9	0.00	0.00	0.00	
12,100.0	90.00	269.68	6,878.5	-73.3	-5,256.4	5,256.9	0.00	0.00	0.00	
12,200.0	90.00	269.68	6,878.5	-73.9	-5,356.4	5,356.9	0.00	0.00	0.00	
12,300.0	90.00	269.68	6,878.5	-74.4	-5,456.4	5,456.9	0.00	0.00	0.00	
12,400.0	90.00	269.68	6,878.5	-75.0	-5,556.4	5,556.9	0.00	0.00	0.00	
12,500.0	90.00	269.68	6,878.5	-75.6	-5,656.4	5,656.9	0.00	0.00	0.00	
12,600.0	90.00	269.68	6,878.5	-76.1	-5,756.4	5,756.9	0.00	0.00	0.00	
12,700.0	90.00	269.68	6,878.5	-76.7	-5,856.4	5,856.9	0.00	0.00	0.00	
12,800.0	90.00	269.68	6,878.5	-77.3	-5,956.4	5,956.9	0.00	0.00	0.00	
12,900.0	90.00	269.68	6,878.5	-77.8	-6,056.4	6,056.9	0.00	0.00	0.00	
13,000.0	90.00	269.68	6,878.5	-78.4	-6,156.4	6,156.9	0.00	0.00	0.00	
13,100.0	90.00	269.68	6,878.5	-78.9	-6,256.4	6,256.9	0.00	0.00	0.00	
13,200.0	90.00	269.68	6,878.5	-79.5	-6,356.4	6,356.9	0.00	0.00	0.00	
13,300.0	90.00	269.68	6,878.5	-80.1	-6,456.4	6,456.9	0.00	0.00	0.00	
13,400.0	90.00	269.68	6,878.5	-80.6	-6,556.4	6,556.9	0.00	0.00	0.00	
13,500.0	90.00	269.68	6,878.5	-81.2	-6,656.4	6,656.9	0.00	0.00	0.00	
13,600.0	90.00	269.68	6,878.5	-81.8	-6,756.4	6,756.9	0.00	0.00	0.00	
13,700.0	90.00	269.68	6,878.5	-82.3	-6,856.4	6,856.9	0.00	0.00	0.00	
13,800.0	90.00	269.68	6,878.5	-82.9	-6,956.4	6,956.9	0.00	0.00	0.00	
13,900.0	90.00	269.68	6,878.5	-83.4	-7,056.4	7,056.9	0.00	0.00	0.00	
14,000.0	90.00	269.68	6,878.5	-84.0	-7,156.4	7,156.9	0.00	0.00	0.00	
14,100.0	90.00	269.68	6,878.5	-84.6	-7,256.4	7,256.9	0.00	0.00	0.00	
14,200.0	90.00	269.68	6,878.5	-85.1	-7,356.4	7,356.9	0.00	0.00	0.00	
14,300.0	90.00	269.68	6,878.5	-85.7	-7,456.4	7,456.9	0.00	0.00	0.00	
14,400.0	90.00	269.68	6,878.5	-86.3	-7,556.4	7,556.9	0.00	0.00	0.00	
14,500.0	90.00	269.68	6,878.5	-86.8	-7,656.4	7,656.9	0.00	0.00	0.00	
14,600.0	90.00	269.68	6,878.5	-87.4	-7,756.4	7,756.9	0.00	0.00	0.00	
14,700.0	90.00	269.68	6,878.5	-87.9	-7,856.4	7,856.9	0.00	0.00	0.00	
14,769.9	90.00	269.68	6,878.5	-88.3	-7,926.3	7,926.8	0.00	0.00	0.00	
TD at 14769.9										

Database:	EDMNEW	Local Co-ordinate Reference:	Well Carlson F-15-16HN
Company:	Bayswater Exploration & Production, LLC	TVD Reference:	WELL @ 4643.5ft (RKB - 22.5')
Project:	SEC.15-T5N-R65W	MD Reference:	WELL @ 4643.5ft (RKB - 22.5')
Site:	Carlson 15-D Pad Sec.15-T5N-R65W	North Reference:	True
Well:	Carlson F-15-16HN	Survey Calculation Method:	Minimum Curvature
Wellbore:	Wellbore #1		
Design:	Plan #2 (6-18-15)		

Targets									
Target Name	Dip Angle (°)	Dip Dir. (°)	TVD (ft)	+N/-S (ft)	+E/-W (ft)	Northing (ft)	Easting (ft)	Latitude	Longitude
- hit/miss target									
- Shape									
BHL 1100'FNL, 2340'I	0.00	0.00	6,878.5	-88.3	-7,926.3	1,390,900.21	3,231,277.39	40.403450	-104.669537
- plan hits target center									
- Point									
SHL 1056'FNL, 309'FI	0.00	0.00	1.0	0.0	0.0	1,391,065.32	3,239,202.17	40.403696	-104.641077
- plan hits target center									
- Point									

Casing Points					
Measured Depth (ft)	Vertical Depth (ft)	Name	Casing Diameter (")	Hole Diameter (")	
7,300.7	6,878.5	7"	7	7-1/2	

Plan Annotations				
Measured Depth (ft)	Vertical Depth (ft)	+N/-S (ft)	+E/-W (ft)	Comment
1,200.0	1,200.0	0.0	0.0	KOP - Start Build 1.50
3,706.7	3,693.9	-39.7	242.8	Start Drop -2.00
4,013.4	4,000.0	-42.3	259.0	Start 2162.3 hold at 4013.4 MD
6,175.7	6,162.3	-42.3	259.0	Start Build 8.00
7,300.7	6,878.5	-46.3	-457.2	Start 7469.3 hold at 7300.7 MD
14,769.9	6,878.5	-88.3	-7,926.3	TD at 14769.9