

Bayswater Exploration & Production, LLC

Well Name: **Carlson E-15-16HC**

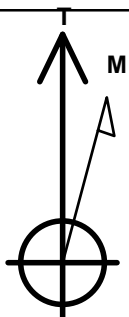
Surface Location: Carlson 15-D Pad Sec.15-T5N-R65W
North American Datum 1983 , US State Plane 1983 , Colorado Northern Zone

Ground Elevation: 4621.0

+N/-S	+E/-W	Northing	Easting	Latitude	Longitude	Slot
0.0	0.0	1391065.08	3239217.21	40.403695	-104.641023	
		RKB - 22.5'	WELL @ 4643.5ft (RKB - 22.5')			

WELLBORE TARGET DETAILS

Name	TVD	+N/-S	+E/-W	Shape
SHL 1056'FNL, 294'FEL, SEC.15	1.0	0.0	0.0	Point
BHL 985'FNL, 2340'FWL, SEC.16	6958.5	27.2	-7941.9	Point



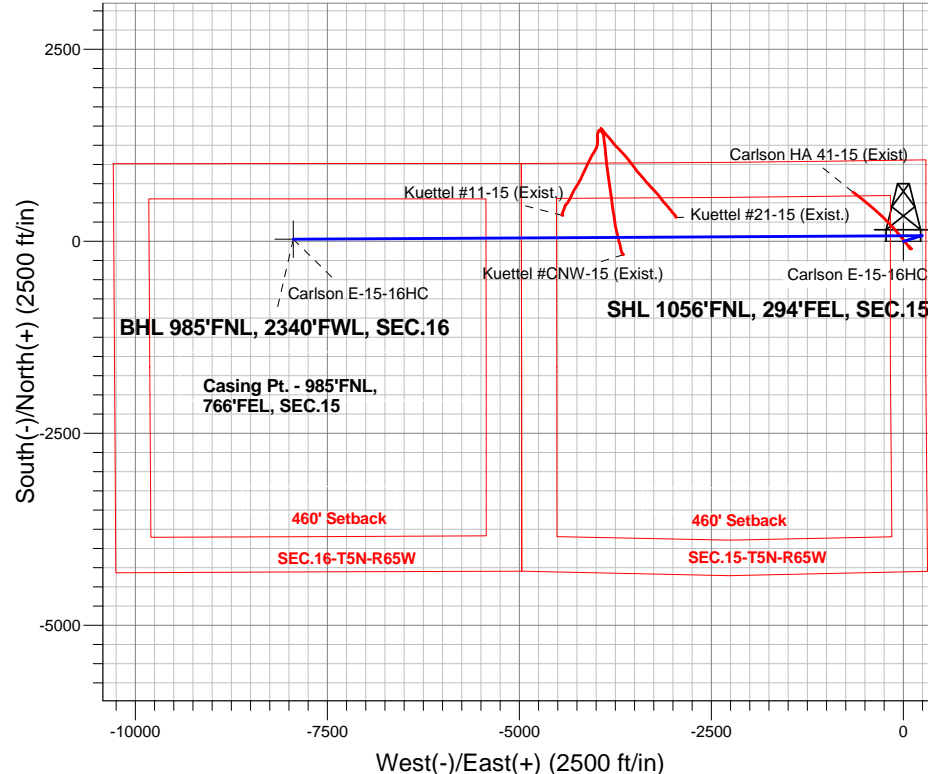
Azimuths to True North
Magnetic North: 8.26°

Magnetic Field
Strength: 52725.3nT
Dip Angle: 66.93°
Date: 6/18/2015
Model: IGRF2010

Carlson 15-D Pad Sec.15-T5N-R65W
Carlson E-15-16HC
Plan #2 (6-18-15)
13:08, June 18 2015

ANNOTATIONS

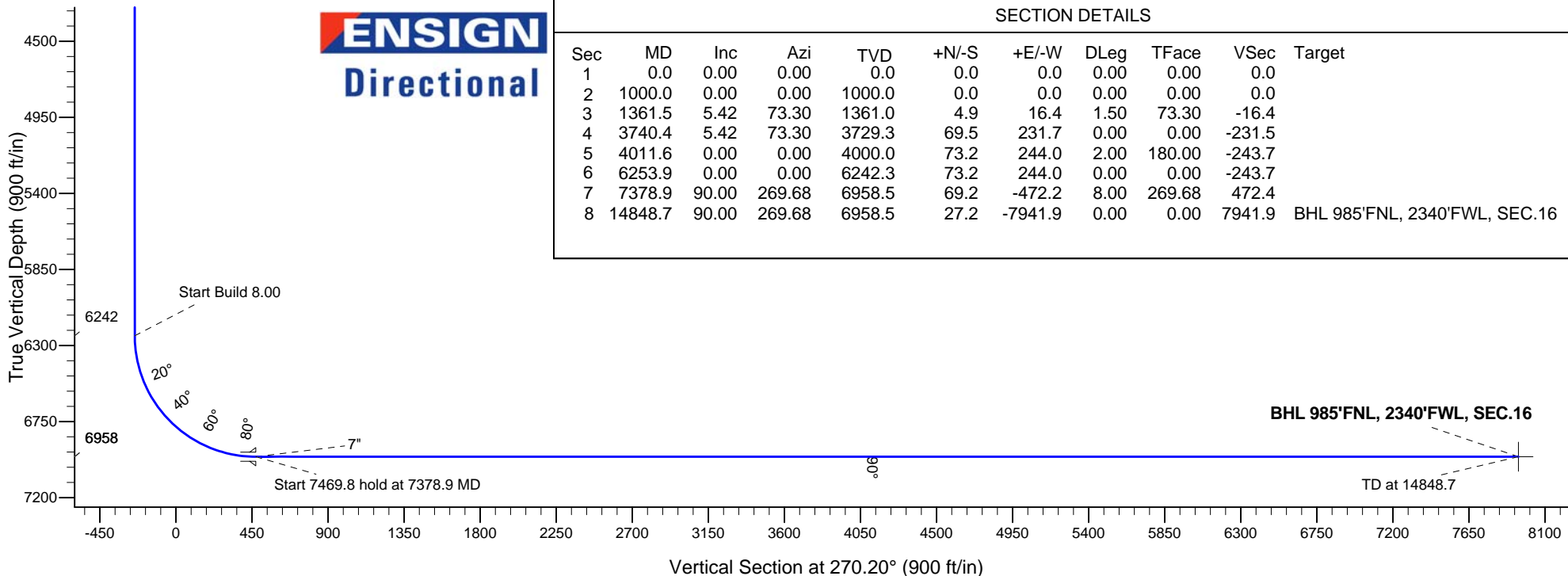
TVD	MD	Annotation
1000.0	1000.0	KOP - Start Build 1.50
3729.2	3740.4	Start Drop -2.00
4000.0	4011.6	Start 2242.3 hold at 4011.6 MD
6242.3	6253.9	Start Build 8.00
6958.5	7378.9	Start 7469.8 hold at 7378.9 MD
6958.5	14848.7	TD at 14848.7



ENSIGN
Directional

SECTION DETAILS

Sec	MD	Inc	Azi	TVD	+N/-S	+E/-W	DLeg	TFace	VSec	Target
1	0.0	0.00	0.00	0.0	0.0	0.0	0.00	0.00	0.0	
2	1000.0	0.00	0.00	1000.0	0.0	0.0	0.00	0.00	0.0	
3	1361.5	5.42	73.30	1361.0	4.9	16.4	1.50	73.30	-16.4	
4	3740.4	5.42	73.30	3729.3	69.5	231.7	0.00	0.00	-231.5	
5	4011.6	0.00	0.00	4000.0	73.2	244.0	2.00	180.00	-243.7	
6	6253.9	0.00	0.00	6242.3	73.2	244.0	0.00	0.00	-243.7	
7	7378.9	90.00	269.68	6958.5	69.2	-472.2	8.00	269.68	472.4	
8	14848.7	90.00	269.68	6958.5	27.2	-7941.9	0.00	0.00	7941.9	BHL 985'FNL, 2340'FWL, SEC.16





Bayswater Exploration & Production, LLC

SEC.15-T5N-R65W

Carlson 15-D Pad Sec.15-T5N-R65W

Carlson E-15-16HC

Wellbore #1

Plan: Plan #2 (6-18-15)

Standard Planning Report

18 June, 2015



BAYSWATER
EXPLORATION & PRODUCTION, LLC

Database:	EDMNEW	Local Co-ordinate Reference:	Well Carlson E-15-16HC
Company:	Bayswater Exploration & Production, LLC	TVD Reference:	WELL @ 4643.5ft (RKB - 22.5')
Project:	SEC.15-T5N-R65W	MD Reference:	WELL @ 4643.5ft (RKB - 22.5')
Site:	Carlson 15-D Pad Sec.15-T5N-R65W	North Reference:	True
Well:	Carlson E-15-16HC	Survey Calculation Method:	Minimum Curvature
Wellbore:	Wellbore #1		
Design:	Plan #2 (6-18-15)		

Project	SEC.15-T5N-R65W, Weld County, Colorado		
Map System:	US State Plane 1983	System Datum:	Mean Sea Level
Geo Datum:	North American Datum 1983		Using Well Reference Point
Map Zone:	Colorado Northern Zone		Using geodetic scale factor

Site		Carlson 15-D Pad Sec.15-T5N-R65W			
Site Position:		Northing:	1,391,065.32 ft	Latitude:	40.403694
From:	Lat/Long	Easting:	3,239,277.09 ft	Longitude:	-104.640808
Position Uncertainty:	0.0 ft	Slot Radius:	"	Grid Convergence:	0.56 °

Well	Carlson E-15-16HC					
Well Position	+N/-S	0.3 ft	Northing:	1,391,065.08 ft	Latitude:	40.403695
	+E/-W	-59.9 ft	Easting:	3,239,217.21 ft	Longitude:	-104.641023
Position Uncertainty		0.0 ft	Wellhead Elevation:	ft	Ground Level:	4,621.0 ft

Wellbore	Wellbore #1				
Magnetics	Model Name	Sample Date	Declination (°)	Dip Angle (°)	Field Strength (nT)
	IGRF2010	6/18/2015	8.26	66.93	52,725

Design	Plan #2 (6-18-15)			
Audit Notes:				
Version:	Phase:	PROTOTYPE	Tie On Depth:	0.0
Vertical Section:	Depth From (TVD) (ft)	+N/-S (ft)	+E/-W (ft)	Direction (°)
	0.0	0.0	0.0	270.20

Plan Sections										
Measured Depth (ft)	Inclination (°)	Azimuth (°)	Vertical Depth (ft)	+N/-S (ft)	+E/-W (ft)	Dogleg Rate (°/100ft)	Build Rate (°/100ft)	Turn Rate (°/100ft)	TFO (°)	Target
0.0	0.00	0.00	0.0	0.0	0.0	0.00	0.00	0.00	0.00	
1,000.0	0.00	0.00	1,000.0	0.0	0.0	0.00	0.00	0.00	0.00	
1,361.5	5.42	73.30	1,361.0	4.9	16.4	1.50	1.50	0.00	73.30	
3,740.4	5.42	73.30	3,729.3	69.5	231.7	0.00	0.00	0.00	0.00	
4,011.6	0.00	0.00	4,000.0	73.2	244.0	2.00	-2.00	0.00	180.00	
6,253.9	0.00	0.00	6,242.3	73.2	244.0	0.00	0.00	0.00	0.00	
7,378.9	90.00	269.68	6,958.5	69.2	-472.2	8.00	8.00	0.00	269.68	
14,848.7	90.00	269.68	6,958.5	27.2	-7,941.9	0.00	0.00	0.00	0.00	BHL 985'FNL, 2340

Database:	EDMNEW	Local Co-ordinate Reference:	Well Carlson E-15-16HC
Company:	Bayswater Exploration & Production, LLC	TVD Reference:	WELL @ 4643.5ft (RKB - 22.5')
Project:	SEC.15-T5N-R65W	MD Reference:	WELL @ 4643.5ft (RKB - 22.5')
Site:	Carlson 15-D Pad Sec.15-T5N-R65W	North Reference:	True
Well:	Carlson E-15-16HC	Survey Calculation Method:	Minimum Curvature
Wellbore:	Wellbore #1		
Design:	Plan #2 (6-18-15)		

Planned Survey									
Measured Depth (ft)	Inclination (°)	Azimuth (°)	Vertical Depth (ft)	+N/-S (ft)	+E/-W (ft)	Vertical Section (ft)	Dogleg Rate (°/100ft)	Build Rate (°/100ft)	Turn Rate (°/100ft)
0.0	0.00	0.00	0.0	0.0	0.0	0.0	0.00	0.00	0.00
100.0	0.00	0.00	100.0	0.0	0.0	0.0	0.00	0.00	0.00
200.0	0.00	0.00	200.0	0.0	0.0	0.0	0.00	0.00	0.00
300.0	0.00	0.00	300.0	0.0	0.0	0.0	0.00	0.00	0.00
400.0	0.00	0.00	400.0	0.0	0.0	0.0	0.00	0.00	0.00
500.0	0.00	0.00	500.0	0.0	0.0	0.0	0.00	0.00	0.00
600.0	0.00	0.00	600.0	0.0	0.0	0.0	0.00	0.00	0.00
700.0	0.00	0.00	700.0	0.0	0.0	0.0	0.00	0.00	0.00
800.0	0.00	0.00	800.0	0.0	0.0	0.0	0.00	0.00	0.00
900.0	0.00	0.00	900.0	0.0	0.0	0.0	0.00	0.00	0.00
1,000.0	0.00	0.00	1,000.0	0.0	0.0	0.0	0.00	0.00	0.00
KOP - Start Build 1.50									
1,100.0	1.50	73.30	1,100.0	0.4	1.3	-1.3	1.50	1.50	0.00
1,200.0	3.00	73.30	1,199.9	1.5	5.0	-5.0	1.50	1.50	0.00
1,300.0	4.50	73.30	1,299.7	3.4	11.3	-11.3	1.50	1.50	0.00
1,361.5	5.42	73.30	1,361.0	4.9	16.4	-16.4	1.50	1.50	0.00
1,400.0	5.42	73.30	1,399.3	6.0	19.9	-19.8	0.00	0.00	0.00
1,500.0	5.42	73.30	1,498.8	8.7	28.9	-28.9	0.00	0.00	0.00
1,600.0	5.42	73.30	1,598.4	11.4	38.0	-37.9	0.00	0.00	0.00
1,700.0	5.42	73.30	1,697.9	14.1	47.0	-47.0	0.00	0.00	0.00
1,800.0	5.42	73.30	1,797.5	16.8	56.1	-56.0	0.00	0.00	0.00
1,900.0	5.42	73.30	1,897.1	19.5	65.1	-65.1	0.00	0.00	0.00
2,000.0	5.42	73.30	1,996.6	22.3	74.2	-74.1	0.00	0.00	0.00
2,100.0	5.42	73.30	2,096.2	25.0	83.2	-83.1	0.00	0.00	0.00
2,200.0	5.42	73.30	2,195.7	27.7	92.3	-92.2	0.00	0.00	0.00
2,300.0	5.42	73.30	2,295.3	30.4	101.3	-101.2	0.00	0.00	0.00
2,400.0	5.42	73.30	2,394.8	33.1	110.4	-110.3	0.00	0.00	0.00
2,500.0	5.42	73.30	2,494.4	35.8	119.4	-119.3	0.00	0.00	0.00
2,600.0	5.42	73.30	2,593.9	38.5	128.5	-128.4	0.00	0.00	0.00
2,700.0	5.42	73.30	2,693.5	41.3	137.5	-137.4	0.00	0.00	0.00
2,800.0	5.42	73.30	2,793.0	44.0	146.6	-146.4	0.00	0.00	0.00
2,900.0	5.42	73.30	2,892.6	46.7	155.6	-155.5	0.00	0.00	0.00
3,000.0	5.42	73.30	2,992.1	49.4	164.7	-164.5	0.00	0.00	0.00
3,100.0	5.42	73.30	3,091.7	52.1	173.7	-173.6	0.00	0.00	0.00
3,200.0	5.42	73.30	3,191.2	54.8	182.8	-182.6	0.00	0.00	0.00
3,300.0	5.42	73.30	3,290.8	57.6	191.8	-191.7	0.00	0.00	0.00
3,400.0	5.42	73.30	3,390.3	60.3	200.9	-200.7	0.00	0.00	0.00
3,500.0	5.42	73.30	3,489.9	63.0	210.0	-209.7	0.00	0.00	0.00
3,600.0	5.42	73.30	3,589.4	65.7	219.0	-218.8	0.00	0.00	0.00
3,700.0	5.42	73.30	3,689.0	68.4	228.1	-227.8	0.00	0.00	0.00
3,740.4	5.42	73.30	3,729.2	69.5	231.7	-231.5	0.00	0.00	0.00
Start Drop -2.00									
3,800.0	4.23	73.30	3,788.6	71.0	236.5	-236.3	2.00	-2.00	0.00
3,900.0	2.23	73.30	3,888.4	72.6	241.9	-241.7	2.00	-2.00	0.00
4,000.0	0.23	73.30	3,988.4	73.2	244.0	-243.7	2.00	-2.00	0.00
4,011.6	0.00	0.00	4,000.0	73.2	244.0	-243.7	2.00	-2.00	0.00
Start 2242.3 hold at 4011.6 MD									
4,100.0	0.00	0.00	4,088.4	73.2	244.0	-243.7	0.00	0.00	0.00
4,200.0	0.00	0.00	4,188.4	73.2	244.0	-243.7	0.00	0.00	0.00
4,300.0	0.00	0.00	4,288.4	73.2	244.0	-243.7	0.00	0.00	0.00
4,400.0	0.00	0.00	4,388.4	73.2	244.0	-243.7	0.00	0.00	0.00
4,500.0	0.00	0.00	4,488.4	73.2	244.0	-243.7	0.00	0.00	0.00
4,600.0	0.00	0.00	4,588.4	73.2	244.0	-243.7	0.00	0.00	0.00

Database:	EDMNEW	Local Co-ordinate Reference:	Well Carlson E-15-16HC
Company:	Bayswater Exploration & Production, LLC	TVD Reference:	WELL @ 4643.5ft (RKB - 22.5')
Project:	SEC.15-T5N-R65W	MD Reference:	WELL @ 4643.5ft (RKB - 22.5')
Site:	Carlson 15-D Pad Sec.15-T5N-R65W	North Reference:	True
Well:	Carlson E-15-16HC	Survey Calculation Method:	Minimum Curvature
Wellbore:	Wellbore #1		
Design:	Plan #2 (6-18-15)		

Planned Survey									
Measured Depth (ft)	Inclination (°)	Azimuth (°)	Vertical Depth (ft)	+N/-S (ft)	+E/-W (ft)	Vertical Section (ft)	Dogleg Rate (°/100ft)	Build Rate (°/100ft)	Turn Rate (°/100ft)
4,700.0	0.00	0.00	4,688.4	73.2	244.0	-243.7	0.00	0.00	0.00
4,800.0	0.00	0.00	4,788.4	73.2	244.0	-243.7	0.00	0.00	0.00
4,900.0	0.00	0.00	4,888.4	73.2	244.0	-243.7	0.00	0.00	0.00
5,000.0	0.00	0.00	4,988.4	73.2	244.0	-243.7	0.00	0.00	0.00
5,100.0	0.00	0.00	5,088.4	73.2	244.0	-243.7	0.00	0.00	0.00
5,200.0	0.00	0.00	5,188.4	73.2	244.0	-243.7	0.00	0.00	0.00
5,300.0	0.00	0.00	5,288.4	73.2	244.0	-243.7	0.00	0.00	0.00
5,400.0	0.00	0.00	5,388.4	73.2	244.0	-243.7	0.00	0.00	0.00
5,500.0	0.00	0.00	5,488.4	73.2	244.0	-243.7	0.00	0.00	0.00
5,600.0	0.00	0.00	5,588.4	73.2	244.0	-243.7	0.00	0.00	0.00
5,700.0	0.00	0.00	5,688.4	73.2	244.0	-243.7	0.00	0.00	0.00
5,800.0	0.00	0.00	5,788.4	73.2	244.0	-243.7	0.00	0.00	0.00
5,900.0	0.00	0.00	5,888.4	73.2	244.0	-243.7	0.00	0.00	0.00
6,000.0	0.00	0.00	5,988.4	73.2	244.0	-243.7	0.00	0.00	0.00
6,100.0	0.00	0.00	6,088.4	73.2	244.0	-243.7	0.00	0.00	0.00
6,200.0	0.00	0.00	6,188.4	73.2	244.0	-243.7	0.00	0.00	0.00
6,253.9	0.00	0.00	6,242.3	73.2	244.0	-243.7	0.00	0.00	0.00
Start Build 8.00									
6,300.0	3.69	269.68	6,288.4	73.2	242.5	-242.3	8.00	8.00	0.00
6,400.0	11.69	269.68	6,387.4	73.1	229.1	-228.9	8.00	8.00	0.00
6,500.0	19.69	269.68	6,483.6	73.0	202.1	-201.9	8.00	8.00	0.00
6,600.0	27.69	269.68	6,575.1	72.7	162.0	-161.7	8.00	8.00	0.00
6,700.0	35.69	269.68	6,660.1	72.4	109.5	-109.3	8.00	8.00	0.00
6,800.0	43.69	269.68	6,737.0	72.1	45.7	-45.4	8.00	8.00	0.00
6,900.0	51.69	269.68	6,804.3	71.7	-28.2	28.4	8.00	8.00	0.00
7,000.0	59.69	269.68	6,860.6	71.2	-110.7	111.0	8.00	8.00	0.00
7,100.0	67.69	269.68	6,904.9	70.7	-200.3	200.5	8.00	8.00	0.00
7,200.0	75.69	269.68	6,936.3	70.2	-295.1	295.4	8.00	8.00	0.00
7,300.0	83.69	269.68	6,954.2	69.6	-393.5	393.7	8.00	8.00	0.00
7,378.9	90.00	269.68	6,958.5	69.2	-472.2	472.4	8.00	8.00	0.00
Start 7469.8 hold at 7378.9 MD - 7"									
7,400.0	90.00	269.68	6,958.5	69.1	-493.3	493.5	0.00	0.00	0.00
7,500.0	90.00	269.68	6,958.5	68.5	-593.3	593.5	0.00	0.00	0.00
7,600.0	90.00	269.68	6,958.5	67.9	-693.3	693.5	0.00	0.00	0.00
7,700.0	90.00	269.68	6,958.5	67.4	-793.3	793.5	0.00	0.00	0.00
7,800.0	90.00	269.68	6,958.5	66.8	-893.3	893.5	0.00	0.00	0.00
7,900.0	90.00	269.68	6,958.5	66.2	-993.3	993.5	0.00	0.00	0.00
8,000.0	90.00	269.68	6,958.5	65.7	-1,093.3	1,093.5	0.00	0.00	0.00
8,100.0	90.00	269.68	6,958.5	65.1	-1,193.3	1,193.5	0.00	0.00	0.00
8,200.0	90.00	269.68	6,958.5	64.6	-1,293.3	1,293.5	0.00	0.00	0.00
8,300.0	90.00	269.68	6,958.5	64.0	-1,393.3	1,393.5	0.00	0.00	0.00
8,400.0	90.00	269.68	6,958.5	63.4	-1,493.3	1,493.5	0.00	0.00	0.00
8,500.0	90.00	269.68	6,958.5	62.9	-1,593.3	1,593.5	0.00	0.00	0.00
8,600.0	90.00	269.68	6,958.5	62.3	-1,693.3	1,693.5	0.00	0.00	0.00
8,700.0	90.00	269.68	6,958.5	61.7	-1,793.3	1,793.5	0.00	0.00	0.00
8,800.0	90.00	269.68	6,958.5	61.2	-1,893.3	1,893.5	0.00	0.00	0.00
8,900.0	90.00	269.68	6,958.5	60.6	-1,993.3	1,993.5	0.00	0.00	0.00
9,000.0	90.00	269.68	6,958.5	60.1	-2,093.3	2,093.5	0.00	0.00	0.00
9,100.0	90.00	269.68	6,958.5	59.5	-2,193.3	2,193.5	0.00	0.00	0.00
9,200.0	90.00	269.68	6,958.5	58.9	-2,293.3	2,293.5	0.00	0.00	0.00
9,300.0	90.00	269.68	6,958.5	58.4	-2,393.3	2,393.4	0.00	0.00	0.00
9,400.0	90.00	269.68	6,958.5	57.8	-2,493.3	2,493.4	0.00	0.00	0.00
9,500.0	90.00	269.68	6,958.5	57.2	-2,593.3	2,593.4	0.00	0.00	0.00
9,600.0	90.00	269.68	6,958.5	56.7	-2,693.3	2,693.4	0.00	0.00	0.00

Database:	EDMNEW	Local Co-ordinate Reference:	Well Carlson E-15-16HC
Company:	Bayswater Exploration & Production, LLC	TVD Reference:	WELL @ 4643.5ft (RKB - 22.5')
Project:	SEC.15-T5N-R65W	MD Reference:	WELL @ 4643.5ft (RKB - 22.5')
Site:	Carlson 15-D Pad Sec.15-T5N-R65W	North Reference:	True
Well:	Carlson E-15-16HC	Survey Calculation Method:	Minimum Curvature
Wellbore:	Wellbore #1		
Design:	Plan #2 (6-18-15)		

Planned Survey										
Measured Depth (ft)	Inclination (°)	Azimuth (°)	Vertical Depth (ft)	+N/-S (ft)	+E/-W (ft)	Vertical Section (ft)	Dogleg Rate (°/100ft)	Build Rate (°/100ft)	Turn Rate (°/100ft)	
9,700.0	90.00	269.68	6,958.5	56.1	-2,793.3	2,793.4	0.00	0.00	0.00	
9,800.0	90.00	269.68	6,958.5	55.6	-2,893.3	2,893.4	0.00	0.00	0.00	
9,900.0	90.00	269.68	6,958.5	55.0	-2,993.3	2,993.4	0.00	0.00	0.00	
10,000.0	90.00	269.68	6,958.5	54.4	-3,093.3	3,093.4	0.00	0.00	0.00	
10,100.0	90.00	269.68	6,958.5	53.9	-3,193.2	3,193.4	0.00	0.00	0.00	
10,200.0	90.00	269.68	6,958.5	53.3	-3,293.2	3,293.4	0.00	0.00	0.00	
10,300.0	90.00	269.68	6,958.5	52.7	-3,393.2	3,393.4	0.00	0.00	0.00	
10,400.0	90.00	269.68	6,958.5	52.2	-3,493.2	3,493.4	0.00	0.00	0.00	
10,500.0	90.00	269.68	6,958.5	51.6	-3,593.2	3,593.4	0.00	0.00	0.00	
10,600.0	90.00	269.68	6,958.5	51.1	-3,693.2	3,693.4	0.00	0.00	0.00	
10,700.0	90.00	269.68	6,958.5	50.5	-3,793.2	3,793.4	0.00	0.00	0.00	
10,800.0	90.00	269.68	6,958.5	49.9	-3,893.2	3,893.4	0.00	0.00	0.00	
10,900.0	90.00	269.68	6,958.5	49.4	-3,993.2	3,993.4	0.00	0.00	0.00	
11,000.0	90.00	269.68	6,958.5	48.8	-4,093.2	4,093.4	0.00	0.00	0.00	
11,100.0	90.00	269.68	6,958.5	48.2	-4,193.2	4,193.4	0.00	0.00	0.00	
11,200.0	90.00	269.68	6,958.5	47.7	-4,293.2	4,293.4	0.00	0.00	0.00	
11,300.0	90.00	269.68	6,958.5	47.1	-4,393.2	4,393.4	0.00	0.00	0.00	
11,400.0	90.00	269.68	6,958.5	46.6	-4,493.2	4,493.4	0.00	0.00	0.00	
11,500.0	90.00	269.68	6,958.5	46.0	-4,593.2	4,593.4	0.00	0.00	0.00	
11,600.0	90.00	269.68	6,958.5	45.4	-4,693.2	4,693.4	0.00	0.00	0.00	
11,700.0	90.00	269.68	6,958.5	44.9	-4,793.2	4,793.3	0.00	0.00	0.00	
11,800.0	90.00	269.68	6,958.5	44.3	-4,893.2	4,893.3	0.00	0.00	0.00	
11,900.0	90.00	269.68	6,958.5	43.8	-4,993.2	4,993.3	0.00	0.00	0.00	
12,000.0	90.00	269.68	6,958.5	43.2	-5,093.2	5,093.3	0.00	0.00	0.00	
12,100.0	90.00	269.68	6,958.5	42.6	-5,193.2	5,193.3	0.00	0.00	0.00	
12,200.0	90.00	269.68	6,958.5	42.1	-5,293.2	5,293.3	0.00	0.00	0.00	
12,300.0	90.00	269.68	6,958.5	41.5	-5,393.2	5,393.3	0.00	0.00	0.00	
12,400.0	90.00	269.68	6,958.5	40.9	-5,493.2	5,493.3	0.00	0.00	0.00	
12,500.0	90.00	269.68	6,958.5	40.4	-5,593.2	5,593.3	0.00	0.00	0.00	
12,600.0	90.00	269.68	6,958.5	39.8	-5,693.2	5,693.3	0.00	0.00	0.00	
12,700.0	90.00	269.68	6,958.5	39.3	-5,793.2	5,793.3	0.00	0.00	0.00	
12,800.0	90.00	269.68	6,958.5	38.7	-5,893.2	5,893.3	0.00	0.00	0.00	
12,900.0	90.00	269.68	6,958.5	38.1	-5,993.2	5,993.3	0.00	0.00	0.00	
13,000.0	90.00	269.68	6,958.5	37.6	-6,093.2	6,093.3	0.00	0.00	0.00	
13,100.0	90.00	269.68	6,958.5	37.0	-6,193.2	6,193.3	0.00	0.00	0.00	
13,200.0	90.00	269.68	6,958.5	36.4	-6,293.2	6,293.3	0.00	0.00	0.00	
13,300.0	90.00	269.68	6,958.5	35.9	-6,393.2	6,393.3	0.00	0.00	0.00	
13,400.0	90.00	269.68	6,958.5	35.3	-6,493.2	6,493.3	0.00	0.00	0.00	
13,500.0	90.00	269.68	6,958.5	34.8	-6,593.2	6,593.3	0.00	0.00	0.00	
13,600.0	90.00	269.68	6,958.5	34.2	-6,693.2	6,693.3	0.00	0.00	0.00	
13,700.0	90.00	269.68	6,958.5	33.6	-6,793.2	6,793.3	0.00	0.00	0.00	
13,800.0	90.00	269.68	6,958.5	33.1	-6,893.2	6,893.3	0.00	0.00	0.00	
13,900.0	90.00	269.68	6,958.5	32.5	-6,993.2	6,993.3	0.00	0.00	0.00	
14,000.0	90.00	269.68	6,958.5	31.9	-7,093.2	7,093.3	0.00	0.00	0.00	
14,100.0	90.00	269.68	6,958.5	31.4	-7,193.2	7,193.3	0.00	0.00	0.00	
14,200.0	90.00	269.68	6,958.5	30.8	-7,293.2	7,293.2	0.00	0.00	0.00	
14,300.0	90.00	269.68	6,958.5	30.3	-7,393.2	7,393.2	0.00	0.00	0.00	
14,400.0	90.00	269.68	6,958.5	29.7	-7,493.2	7,493.2	0.00	0.00	0.00	
14,500.0	90.00	269.68	6,958.5	29.1	-7,593.2	7,593.2	0.00	0.00	0.00	
14,600.0	90.00	269.68	6,958.5	28.6	-7,693.2	7,693.2	0.00	0.00	0.00	
14,700.0	90.00	269.68	6,958.5	28.0	-7,793.2	7,793.2	0.00	0.00	0.00	
14,800.0	90.00	269.68	6,958.5	27.4	-7,893.2	7,893.2	0.00	0.00	0.00	
14,848.7	90.00	269.68	6,958.5	27.2	-7,941.9	7,941.9	0.00	0.00	0.00	
TD at 14848.7										

Database:	EDMNEW	Local Co-ordinate Reference:	Well Carlson E-15-16HC
Company:	Bayswater Exploration & Production, LLC	TVD Reference:	WELL @ 4643.5ft (RKB - 22.5')
Project:	SEC.15-T5N-R65W	MD Reference:	WELL @ 4643.5ft (RKB - 22.5')
Site:	Carlson 15-D Pad Sec.15-T5N-R65W	North Reference:	True
Well:	Carlson E-15-16HC	Survey Calculation Method:	Minimum Curvature
Wellbore:	Wellbore #1		
Design:	Plan #2 (6-18-15)		

Planned Survey									
Measured Depth (ft)	Inclination (°)	Azimuth (°)	Vertical Depth (ft)	+N/-S (ft)	+E/-W (ft)	Vertical Section (ft)	Dogleg Rate (°/100ft)	Build Rate (°/100ft)	Turn Rate (°/100ft)

Targets									
Target Name	Dip Angle (°)	Dip Dir. (°)	TVD (ft)	+N/-S (ft)	+E/-W (ft)	Northing (ft)	Easting (ft)	Latitude	Longitude
- hit/miss target									
- Shape									
BHL 985'FNL, 2340'F ¹	0.00	0.00	6,958.5	27.2	-7,941.9	1,391,015.32	3,231,275.76	40.403766	-104.669539
- plan hits target center									
- Point									
SHL 1056'FNL, 294'F ¹	0.00	0.00	1.0	0.0	0.0	1,391,065.10	3,239,217.21	40.403695	-104.641023
- plan hits target center									
- Point									

Casing Points					
Measured Depth (ft)	Vertical Depth (ft)	Name	Casing Diameter (")	Hole Diameter (")	
7,378.9	6,958.5	7"	7	7-1/2	

Plan Annotations				
Measured Depth (ft)	Vertical Depth (ft)	Local Coordinates		Comment
		+N/-S (ft)	+E/-W (ft)	
1,000.0	1,000.0	0.0	0.0	KOP - Start Build 1.50
3,740.4	3,729.2	69.5	231.7	Start Drop -2.00
4,011.6	4,000.0	73.2	244.0	Start 2242.3 hold at 4011.6 MD
6,253.9	6,242.3	73.2	244.0	Start Build 8.00
7,378.9	6,958.5	69.2	-472.2	Start 7469.8 hold at 7378.9 MD
14,848.7	6,958.5	27.2	-7,941.9	TD at 14848.7