

# Bayswater Exploration & Production, LLC

Well Name: **Carlson B-15-16HC**

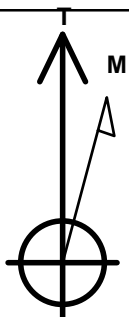
Surface Location: Carlson 15-D Pad Sec.15-T5N-R65W  
North American Datum 1983 , US State Plane 1983 , Colorado Northern Zone

Ground Elevation: 4621.0

+N/-S	+E/-W	Northing	Easting	Latitude	Longitude	Slot
0.0	0.0	1391065.16	3239262.05	40.403694	-104.640862	
		RKB - 22.5'	WELL @ 4643.5ft (RKB - 22.5')			

## WELLBORE TARGET DETAILS

Name	TVD	+N/-S	+E/-W	Shape
SHL 1057'FNL, 249'FEL, SEC.15	1.0	0.0	0.0	Point
BHL 325'FNL, 2342'FWL, SEC.16	6958.5	687.3	-7989.9	Point



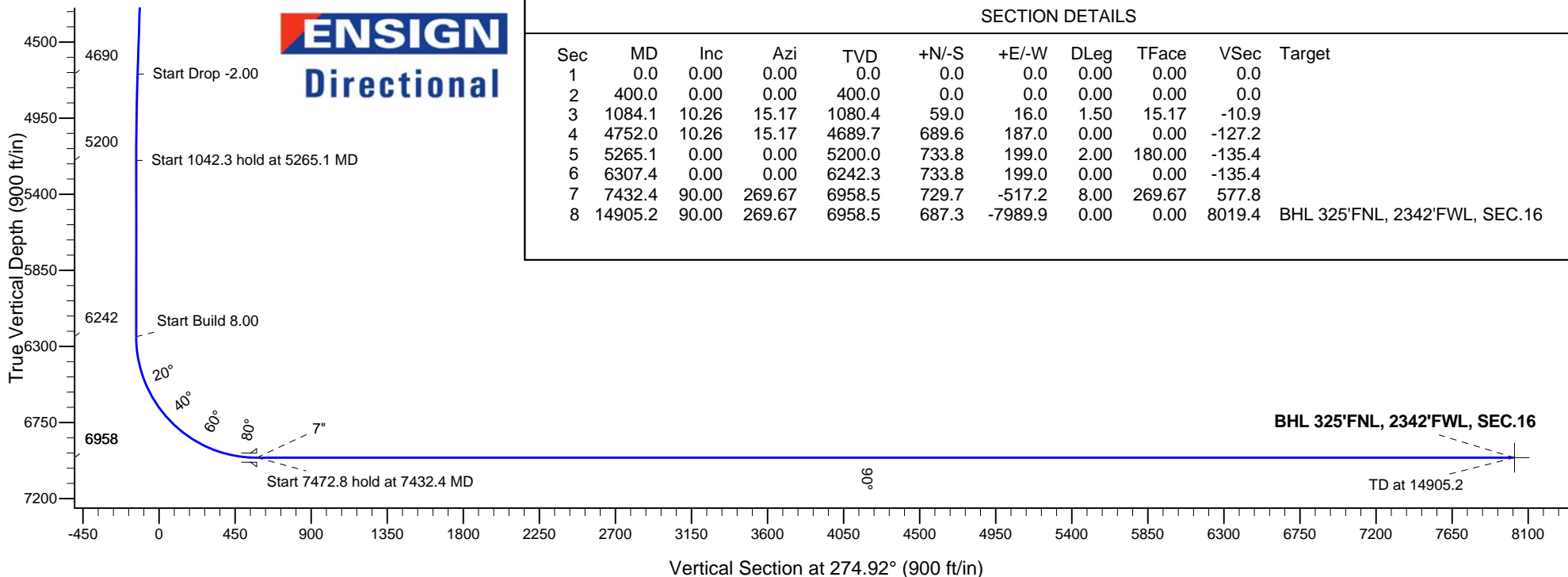
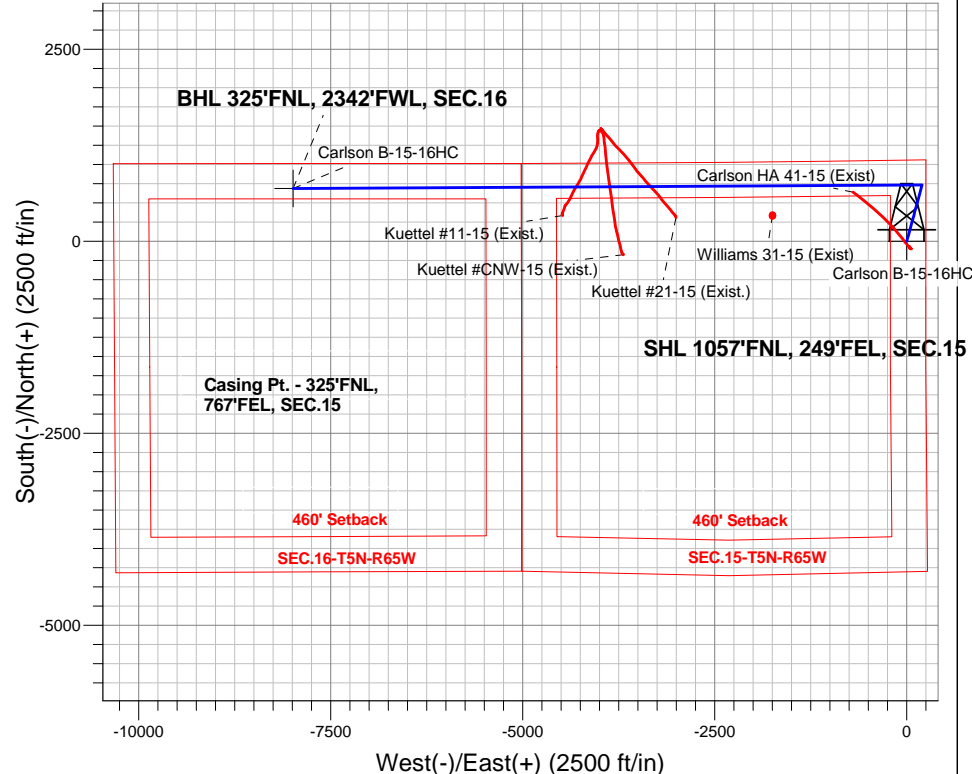
Azimuths to True North  
Magnetic North: 8.26°

Magnetic Field  
Strength: 52725.1nT  
Dip Angle: 66.93°  
Date: 6/19/2015  
Model: IGRF2010

Carlson 15-D Pad Sec.15-T5N-R65W  
Carlson B-15-16HC  
Plan #2 (6-18-15)  
9:05, June 19 2015

## ANNOTATIONS

TVD	MD	Annotation
400.0	400.0	KOP - Start Build 1.50
4689.7	4752.0	Start Drop -2.00
5200.0	5265.1	Start 1042.3 hold at 5265.1 MD
6242.3	6307.4	Start Build 8.00
6958.5	7432.4	Start 7472.8 hold at 7432.4 MD
6958.5	14905.2	TD at 14905.2





# **Bayswater Exploration & Production, LLC**

**SEC.15-T5N-R65W**

**Carlson 15-D Pad Sec.15-T5N-R65W**

**Carlson B-15-16HC**

**Wellbore #1**

**Plan: Plan #2 (6-18-15)**

## **Standard Planning Report**

**19 June, 2015**



**BAYSWATER**  
**EXPLORATION & PRODUCTION, LLC**

<b>Database:</b>	EDMNEW	<b>Local Co-ordinate Reference:</b>	Well Carlson B-15-16HC
<b>Company:</b>	Bayswater Exploration & Production, LLC	<b>TVD Reference:</b>	WELL @ 4643.5ft (RKB - 22.5')
<b>Project:</b>	SEC.15-T5N-R65W	<b>MD Reference:</b>	WELL @ 4643.5ft (RKB - 22.5')
<b>Site:</b>	Carlson 15-D Pad Sec.15-T5N-R65W	<b>North Reference:</b>	True
<b>Well:</b>	Carlson B-15-16HC	<b>Survey Calculation Method:</b>	Minimum Curvature
<b>Wellbore:</b>	Wellbore #1		
<b>Design:</b>	Plan #2 (6-18-15)		

<b>Project</b>	SEC.15-T5N-R65W, Weld County, Colorado		
<b>Map System:</b>	US State Plane 1983	<b>System Datum:</b>	Mean Sea Level
<b>Geo Datum:</b>	North American Datum 1983		Using Well Reference Point
<b>Map Zone:</b>	Colorado Northern Zone		Using geodetic scale factor

Site		Carlson 15-D Pad Sec.15-T5N-R65W			
Site Position:		Northing:	1,391,065.32 ft	Latitude:	40.403694
From:	Lat/Long	Easting:	3,239,277.09 ft	Longitude:	-104.640808
Position Uncertainty:	0.0 ft	Slot Radius:	"	Grid Convergence:	0.56 °

Well	Carlson B-15-16HC					
Well Position	+N-S	0.0 ft	Northing:	1,391,065.16 ft	Latitude:	40.403694
	+E-W	-15.0 ft	Easting:	3,239,262.05 ft	Longitude:	-104.640862
Position Uncertainty		0.0 ft	Wellhead Elevation:	ft	Ground Level:	4,621.0 ft

<b>Wellbore</b>	Wellbore #1				
<b>Magnetics</b>	<b>Model Name</b>	<b>Sample Date</b>	<b>Declination (°)</b>	<b>Dip Angle (°)</b>	<b>Field Strength (nT)</b>
	IGRF2010	6/19/2015	8.26	66.93	52,725

<b>Design</b>	Plan #2 (6-18-15)			
<b>Audit Notes:</b>				
<b>Version:</b>	<b>Phase:</b>	PROTOTYPE	<b>Tie On Depth:</b>	0.0
<b>Vertical Section:</b>	<b>Depth From (TVD) (ft)</b>	<b>+N/-S (ft)</b>	<b>+E/-W (ft)</b>	<b>Direction (°)</b>
	0.0	0.0	0.0	274.92

<b>Plan Sections</b>										
Measured Depth (ft)	Inclination (°)	Azimuth (°)	Vertical Depth (ft)	+N/-S (ft)	+E/-W (ft)	Dogleg Rate (°/100ft)	Build Rate (°/100ft)	Turn Rate (°/100ft)	TFO (°)	Target
0.0	0.00	0.00	0.0	0.0	0.0	0.00	0.00	0.00	0.00	
400.0	0.00	0.00	400.0	0.0	0.0	0.00	0.00	0.00	0.00	
1,084.1	10.26	15.17	1,080.4	59.0	16.0	1.50	1.50	0.00	15.17	
4,752.0	10.26	15.17	4,689.7	689.6	187.0	0.00	0.00	0.00	0.00	
5,265.1	0.00	0.00	5,200.0	733.8	199.0	2.00	-2.00	0.00	180.00	
6,307.4	0.00	0.00	6,242.3	733.8	199.0	0.00	0.00	0.00	0.00	
7,432.4	90.00	269.67	6,958.5	729.7	-517.2	8.00	8.00	0.00	269.67	
14,905.2	90.00	269.67	6,958.5	687.3	-7,989.9	0.00	0.00	0.00	0.00	BHL 325'FNL, 2342

<b>Database:</b>	EDMNEW	<b>Local Co-ordinate Reference:</b>	Well Carlson B-15-16HC
<b>Company:</b>	Bayswater Exploration & Production, LLC	<b>TVD Reference:</b>	WELL @ 4643.5ft (RKB - 22.5')
<b>Project:</b>	SEC.15-T5N-R65W	<b>MD Reference:</b>	WELL @ 4643.5ft (RKB - 22.5')
<b>Site:</b>	Carlson 15-D Pad Sec.15-T5N-R65W	<b>North Reference:</b>	True
<b>Well:</b>	Carlson B-15-16HC	<b>Survey Calculation Method:</b>	Minimum Curvature
<b>Wellbore:</b>	Wellbore #1		
<b>Design:</b>	Plan #2 (6-18-15)		

Planned Survey									
Measured Depth (ft)	Inclination (°)	Azimuth (°)	Vertical Depth (ft)	+N/-S (ft)	+E/-W (ft)	Vertical Section (ft)	Dogleg Rate (°/100ft)	Build Rate (°/100ft)	Turn Rate (°/100ft)
0.0	0.00	0.00	0.0	0.0	0.0	0.0	0.00	0.00	0.00
100.0	0.00	0.00	100.0	0.0	0.0	0.0	0.00	0.00	0.00
200.0	0.00	0.00	200.0	0.0	0.0	0.0	0.00	0.00	0.00
300.0	0.00	0.00	300.0	0.0	0.0	0.0	0.00	0.00	0.00
400.0	0.00	0.00	400.0	0.0	0.0	0.0	0.00	0.00	0.00
KOP - Start Build 1.50									
500.0	1.50	15.17	500.0	1.3	0.3	-0.2	1.50	1.50	0.00
600.0	3.00	15.17	599.9	5.1	1.4	-0.9	1.50	1.50	0.00
700.0	4.50	15.17	699.7	11.4	3.1	-2.1	1.50	1.50	0.00
800.0	6.00	15.17	799.3	20.2	5.5	-3.7	1.50	1.50	0.00
900.0	7.50	15.17	898.6	31.5	8.6	-5.8	1.50	1.50	0.00
1,000.0	9.00	15.17	997.5	45.4	12.3	-8.4	1.50	1.50	0.00
1,084.1	10.26	15.17	1,080.4	59.0	16.0	-10.9	1.50	1.50	0.00
1,100.0	10.26	15.17	1,096.1	61.7	16.7	-11.4	0.00	0.00	0.00
1,200.0	10.26	15.17	1,194.5	78.9	21.4	-14.6	0.00	0.00	0.00
1,300.0	10.26	15.17	1,292.9	96.1	26.1	-17.7	0.00	0.00	0.00
1,400.0	10.26	15.17	1,391.3	113.3	30.7	-20.9	0.00	0.00	0.00
1,500.0	10.26	15.17	1,489.7	130.5	35.4	-24.1	0.00	0.00	0.00
1,600.0	10.26	15.17	1,588.1	147.7	40.0	-27.2	0.00	0.00	0.00
1,700.0	10.26	15.17	1,686.5	164.9	44.7	-30.4	0.00	0.00	0.00
1,800.0	10.26	15.17	1,784.9	182.0	49.4	-33.6	0.00	0.00	0.00
1,900.0	10.26	15.17	1,883.3	199.2	54.0	-36.8	0.00	0.00	0.00
2,000.0	10.26	15.17	1,981.7	216.4	58.7	-39.9	0.00	0.00	0.00
2,100.0	10.26	15.17	2,080.1	233.6	63.4	-43.1	0.00	0.00	0.00
2,200.0	10.26	15.17	2,178.5	250.8	68.0	-46.3	0.00	0.00	0.00
2,300.0	10.26	15.17	2,276.9	268.0	72.7	-49.4	0.00	0.00	0.00
2,400.0	10.26	15.17	2,375.3	285.2	77.3	-52.6	0.00	0.00	0.00
2,500.0	10.26	15.17	2,473.7	302.4	82.0	-55.8	0.00	0.00	0.00
2,600.0	10.26	15.17	2,572.1	319.6	86.7	-59.0	0.00	0.00	0.00
2,700.0	10.26	15.17	2,670.5	336.8	91.3	-62.1	0.00	0.00	0.00
2,800.0	10.26	15.17	2,768.9	354.0	96.0	-65.3	0.00	0.00	0.00
2,900.0	10.26	15.17	2,867.3	371.2	100.7	-68.5	0.00	0.00	0.00
3,000.0	10.26	15.17	2,965.7	388.4	105.3	-71.6	0.00	0.00	0.00
3,100.0	10.26	15.17	3,064.1	405.6	110.0	-74.8	0.00	0.00	0.00
3,200.0	10.26	15.17	3,162.5	422.7	114.6	-78.0	0.00	0.00	0.00
3,300.0	10.26	15.17	3,260.9	439.9	119.3	-81.2	0.00	0.00	0.00
3,400.0	10.26	15.17	3,359.3	457.1	124.0	-84.3	0.00	0.00	0.00
3,500.0	10.26	15.17	3,457.7	474.3	128.6	-87.5	0.00	0.00	0.00
3,600.0	10.26	15.17	3,556.1	491.5	133.3	-90.7	0.00	0.00	0.00
3,700.0	10.26	15.17	3,654.5	508.7	138.0	-93.9	0.00	0.00	0.00
3,800.0	10.26	15.17	3,752.9	525.9	142.6	-97.0	0.00	0.00	0.00
3,900.0	10.26	15.17	3,851.3	543.1	147.3	-100.2	0.00	0.00	0.00
4,000.0	10.26	15.17	3,949.7	560.3	151.9	-103.4	0.00	0.00	0.00
4,100.0	10.26	15.17	4,048.1	577.5	156.6	-106.5	0.00	0.00	0.00
4,200.0	10.26	15.17	4,146.5	594.7	161.3	-109.7	0.00	0.00	0.00
4,300.0	10.26	15.17	4,244.9	611.9	165.9	-112.9	0.00	0.00	0.00
4,400.0	10.26	15.17	4,343.3	629.1	170.6	-116.1	0.00	0.00	0.00
4,500.0	10.26	15.17	4,441.7	646.3	175.3	-119.2	0.00	0.00	0.00
4,600.0	10.26	15.17	4,540.1	663.4	179.9	-122.4	0.00	0.00	0.00
4,700.0	10.26	15.17	4,638.5	680.6	184.6	-125.6	0.00	0.00	0.00
4,752.0	10.26	15.17	4,689.7	689.6	187.0	-127.2	0.00	0.00	0.00
Start Drop -2.00									
4,800.0	9.30	15.17	4,737.0	697.4	189.1	-128.7	2.00	-2.00	0.00
4,900.0	7.30	15.17	4,835.9	711.4	192.9	-131.2	2.00	-2.00	0.00

<b>Database:</b>	EDMNEW	<b>Local Co-ordinate Reference:</b>	Well Carlson B-15-16HC
<b>Company:</b>	Bayswater Exploration & Production, LLC	<b>TVD Reference:</b>	WELL @ 4643.5ft (RKB - 22.5')
<b>Project:</b>	SEC.15-T5N-R65W	<b>MD Reference:</b>	WELL @ 4643.5ft (RKB - 22.5')
<b>Site:</b>	Carlson 15-D Pad Sec.15-T5N-R65W	<b>North Reference:</b>	True
<b>Well:</b>	Carlson B-15-16HC	<b>Survey Calculation Method:</b>	Minimum Curvature
<b>Wellbore:</b>	Wellbore #1		
<b>Design:</b>	Plan #2 (6-18-15)		

Planned Survey									
Measured Depth (ft)	Inclination (°)	Azimuth (°)	Vertical Depth (ft)	+N/-S (ft)	+E/-W (ft)	Vertical Section (ft)	Dogleg Rate (°/100ft)	Build Rate (°/100ft)	Turn Rate (°/100ft)
5,000.0	5.30	15.17	4,935.3	722.0	195.8	-133.2	2.00	-2.00	0.00
5,100.0	3.30	15.17	5,035.0	729.2	197.8	-134.5	2.00	-2.00	0.00
5,200.0	1.30	15.17	5,135.0	733.1	198.8	-135.2	2.00	-2.00	0.00
5,265.1	0.00	0.00	5,200.0	733.8	199.0	-135.4	2.00	-2.00	0.00
Start 1042.3 hold at 5265.1 MD									
5,300.0	0.00	0.00	5,234.9	733.8	199.0	-135.4	0.00	0.00	0.00
5,400.0	0.00	0.00	5,334.9	733.8	199.0	-135.4	0.00	0.00	0.00
5,500.0	0.00	0.00	5,434.9	733.8	199.0	-135.4	0.00	0.00	0.00
5,600.0	0.00	0.00	5,534.9	733.8	199.0	-135.4	0.00	0.00	0.00
5,700.0	0.00	0.00	5,634.9	733.8	199.0	-135.4	0.00	0.00	0.00
5,800.0	0.00	0.00	5,734.9	733.8	199.0	-135.4	0.00	0.00	0.00
5,900.0	0.00	0.00	5,834.9	733.8	199.0	-135.4	0.00	0.00	0.00
6,000.0	0.00	0.00	5,934.9	733.8	199.0	-135.4	0.00	0.00	0.00
6,100.0	0.00	0.00	6,034.9	733.8	199.0	-135.4	0.00	0.00	0.00
6,200.0	0.00	0.00	6,134.9	733.8	199.0	-135.4	0.00	0.00	0.00
6,300.0	0.00	0.00	6,234.9	733.8	199.0	-135.4	0.00	0.00	0.00
6,307.4	0.00	0.00	6,242.3	733.8	199.0	-135.4	0.00	0.00	0.00
Start Build 8.00									
6,400.0	7.41	269.67	6,334.7	733.8	193.0	-129.4	8.00	8.00	0.00
6,500.0	15.41	269.67	6,432.6	733.7	173.2	-109.7	8.00	8.00	0.00
6,600.0	23.41	269.67	6,526.9	733.5	140.0	-76.7	8.00	8.00	0.00
6,700.0	31.41	269.67	6,615.6	733.2	94.0	-30.9	8.00	8.00	0.00
6,800.0	39.41	269.67	6,697.0	732.9	36.1	26.8	8.00	8.00	0.00
6,900.0	47.41	269.67	6,769.6	732.5	-32.5	95.2	8.00	8.00	0.00
7,000.0	55.41	269.67	6,831.9	732.0	-110.6	173.0	8.00	8.00	0.00
7,100.0	63.41	269.67	6,882.8	731.6	-196.6	258.6	8.00	8.00	0.00
7,200.0	71.41	269.67	6,921.1	731.0	-288.9	350.5	8.00	8.00	0.00
7,300.0	79.41	269.67	6,946.3	730.5	-385.6	446.8	8.00	8.00	0.00
7,400.0	87.41	269.67	6,957.8	729.9	-484.8	545.6	8.00	8.00	0.00
7,432.4	90.00	269.67	6,958.5	729.7	-517.2	577.9	7.99	7.99	0.00
Start 7472.8 hold at 7432.4 MD - 7"									
7,500.0	90.00	269.67	6,958.5	729.3	-584.8	645.2	0.00	0.00	0.00
7,600.0	90.00	269.67	6,958.5	728.8	-684.8	744.8	0.00	0.00	0.00
7,700.0	90.00	269.67	6,958.5	728.2	-784.8	844.3	0.00	0.00	0.00
7,800.0	90.00	269.67	6,958.5	727.6	-884.8	943.9	0.00	0.00	0.00
7,900.0	90.00	269.67	6,958.5	727.1	-984.8	1,043.5	0.00	0.00	0.00
8,000.0	90.00	269.67	6,958.5	726.5	-1,084.8	1,143.1	0.00	0.00	0.00
8,100.0	90.00	269.67	6,958.5	725.9	-1,184.8	1,242.7	0.00	0.00	0.00
8,200.0	90.00	269.67	6,958.5	725.4	-1,284.8	1,342.3	0.00	0.00	0.00
8,300.0	90.00	269.67	6,958.5	724.8	-1,384.8	1,441.8	0.00	0.00	0.00
8,400.0	90.00	269.67	6,958.5	724.2	-1,484.8	1,541.4	0.00	0.00	0.00
8,500.0	90.00	269.67	6,958.5	723.7	-1,584.8	1,641.0	0.00	0.00	0.00
8,600.0	90.00	269.67	6,958.5	723.1	-1,684.8	1,740.6	0.00	0.00	0.00
8,700.0	90.00	269.67	6,958.5	722.5	-1,784.8	1,840.2	0.00	0.00	0.00
8,800.0	90.00	269.67	6,958.5	722.0	-1,884.8	1,939.7	0.00	0.00	0.00
8,900.0	90.00	269.67	6,958.5	721.4	-1,984.8	2,039.3	0.00	0.00	0.00
9,000.0	90.00	269.67	6,958.5	720.8	-2,084.8	2,138.9	0.00	0.00	0.00
9,100.0	90.00	269.67	6,958.5	720.3	-2,184.8	2,238.5	0.00	0.00	0.00
9,200.0	90.00	269.67	6,958.5	719.7	-2,284.8	2,338.1	0.00	0.00	0.00
9,300.0	90.00	269.67	6,958.5	719.1	-2,384.8	2,437.7	0.00	0.00	0.00
9,400.0	90.00	269.67	6,958.5	718.6	-2,484.8	2,537.2	0.00	0.00	0.00
9,500.0	90.00	269.67	6,958.5	718.0	-2,584.8	2,636.8	0.00	0.00	0.00
9,600.0	90.00	269.67	6,958.5	717.4	-2,684.8	2,736.4	0.00	0.00	0.00

<b>Database:</b>	EDMNEW	<b>Local Co-ordinate Reference:</b>	Well Carlson B-15-16HC
<b>Company:</b>	Bayswater Exploration & Production, LLC	<b>TVD Reference:</b>	WELL @ 4643.5ft (RKB - 22.5')
<b>Project:</b>	SEC.15-T5N-R65W	<b>MD Reference:</b>	WELL @ 4643.5ft (RKB - 22.5')
<b>Site:</b>	Carlson 15-D Pad Sec.15-T5N-R65W	<b>North Reference:</b>	True
<b>Well:</b>	Carlson B-15-16HC	<b>Survey Calculation Method:</b>	Minimum Curvature
<b>Wellbore:</b>	Wellbore #1		
<b>Design:</b>	Plan #2 (6-18-15)		

Planned Survey										
Measured Depth (ft)	Inclination (°)	Azimuth (°)	Vertical Depth (ft)	+N/-S (ft)	+E/-W (ft)	Vertical Section (ft)	Dogleg Rate (°/100ft)	Build Rate (°/100ft)	Turn Rate (°/100ft)	
9,700.0	90.00	269.67	6,958.5	716.9	-2,784.8	2,836.0	0.00	0.00	0.00	
9,800.0	90.00	269.67	6,958.5	716.3	-2,884.8	2,935.6	0.00	0.00	0.00	
9,900.0	90.00	269.67	6,958.5	715.7	-2,984.8	3,035.1	0.00	0.00	0.00	
10,000.0	90.00	269.67	6,958.5	715.2	-3,084.8	3,134.7	0.00	0.00	0.00	
10,100.0	90.00	269.67	6,958.5	714.6	-3,184.8	3,234.3	0.00	0.00	0.00	
10,200.0	90.00	269.67	6,958.5	714.0	-3,284.8	3,333.9	0.00	0.00	0.00	
10,300.0	90.00	269.67	6,958.5	713.5	-3,384.8	3,433.5	0.00	0.00	0.00	
10,400.0	90.00	269.67	6,958.5	712.9	-3,484.8	3,533.1	0.00	0.00	0.00	
10,500.0	90.00	269.67	6,958.5	712.3	-3,584.8	3,632.6	0.00	0.00	0.00	
10,600.0	90.00	269.67	6,958.5	711.7	-3,684.8	3,732.2	0.00	0.00	0.00	
10,700.0	90.00	269.67	6,958.5	711.2	-3,784.8	3,831.8	0.00	0.00	0.00	
10,800.0	90.00	269.67	6,958.5	710.6	-3,884.8	3,931.4	0.00	0.00	0.00	
10,900.0	90.00	269.67	6,958.5	710.0	-3,984.8	4,031.0	0.00	0.00	0.00	
11,000.0	90.00	269.67	6,958.5	709.5	-4,084.8	4,130.5	0.00	0.00	0.00	
11,100.0	90.00	269.67	6,958.5	708.9	-4,184.8	4,230.1	0.00	0.00	0.00	
11,200.0	90.00	269.67	6,958.5	708.3	-4,284.8	4,329.7	0.00	0.00	0.00	
11,300.0	90.00	269.67	6,958.5	707.8	-4,384.8	4,429.3	0.00	0.00	0.00	
11,400.0	90.00	269.67	6,958.5	707.2	-4,484.8	4,528.9	0.00	0.00	0.00	
11,500.0	90.00	269.67	6,958.5	706.6	-4,584.8	4,628.5	0.00	0.00	0.00	
11,600.0	90.00	269.67	6,958.5	706.1	-4,684.8	4,728.0	0.00	0.00	0.00	
11,700.0	90.00	269.67	6,958.5	705.5	-4,784.8	4,827.6	0.00	0.00	0.00	
11,800.0	90.00	269.67	6,958.5	704.9	-4,884.8	4,927.2	0.00	0.00	0.00	
11,900.0	90.00	269.67	6,958.5	704.4	-4,984.8	5,026.8	0.00	0.00	0.00	
12,000.0	90.00	269.67	6,958.5	703.8	-5,084.8	5,126.4	0.00	0.00	0.00	
12,100.0	90.00	269.67	6,958.5	703.2	-5,184.8	5,225.9	0.00	0.00	0.00	
12,200.0	90.00	269.67	6,958.5	702.7	-5,284.8	5,325.5	0.00	0.00	0.00	
12,300.0	90.00	269.67	6,958.5	702.1	-5,384.7	5,425.1	0.00	0.00	0.00	
12,400.0	90.00	269.67	6,958.5	701.5	-5,484.7	5,524.7	0.00	0.00	0.00	
12,500.0	90.00	269.67	6,958.5	701.0	-5,584.7	5,624.3	0.00	0.00	0.00	
12,600.0	90.00	269.67	6,958.5	700.4	-5,684.7	5,723.9	0.00	0.00	0.00	
12,700.0	90.00	269.67	6,958.5	699.8	-5,784.7	5,823.4	0.00	0.00	0.00	
12,800.0	90.00	269.67	6,958.5	699.3	-5,884.7	5,923.0	0.00	0.00	0.00	
12,900.0	90.00	269.67	6,958.5	698.7	-5,984.7	6,022.6	0.00	0.00	0.00	
13,000.0	90.00	269.67	6,958.5	698.1	-6,084.7	6,122.2	0.00	0.00	0.00	
13,100.0	90.00	269.67	6,958.5	697.6	-6,184.7	6,221.8	0.00	0.00	0.00	
13,200.0	90.00	269.67	6,958.5	697.0	-6,284.7	6,321.3	0.00	0.00	0.00	
13,300.0	90.00	269.67	6,958.5	696.4	-6,384.7	6,420.9	0.00	0.00	0.00	
13,400.0	90.00	269.67	6,958.5	695.9	-6,484.7	6,520.5	0.00	0.00	0.00	
13,500.0	90.00	269.67	6,958.5	695.3	-6,584.7	6,620.1	0.00	0.00	0.00	
13,600.0	90.00	269.67	6,958.5	694.7	-6,684.7	6,719.7	0.00	0.00	0.00	
13,700.0	90.00	269.67	6,958.5	694.1	-6,784.7	6,819.3	0.00	0.00	0.00	
13,800.0	90.00	269.67	6,958.5	693.6	-6,884.7	6,918.8	0.00	0.00	0.00	
13,900.0	90.00	269.67	6,958.5	693.0	-6,984.7	7,018.4	0.00	0.00	0.00	
14,000.0	90.00	269.67	6,958.5	692.4	-7,084.7	7,118.0	0.00	0.00	0.00	
14,100.0	90.00	269.67	6,958.5	691.9	-7,184.7	7,217.6	0.00	0.00	0.00	
14,200.0	90.00	269.67	6,958.5	691.3	-7,284.7	7,317.2	0.00	0.00	0.00	
14,300.0	90.00	269.67	6,958.5	690.7	-7,384.7	7,416.7	0.00	0.00	0.00	
14,400.0	90.00	269.67	6,958.5	690.2	-7,484.7	7,516.3	0.00	0.00	0.00	
14,500.0	90.00	269.67	6,958.5	689.6	-7,584.7	7,615.9	0.00	0.00	0.00	
14,600.0	90.00	269.67	6,958.5	689.0	-7,684.7	7,715.5	0.00	0.00	0.00	
14,700.0	90.00	269.67	6,958.5	688.5	-7,784.7	7,815.1	0.00	0.00	0.00	
14,800.0	90.00	269.67	6,958.5	687.9	-7,884.7	7,914.7	0.00	0.00	0.00	
14,900.0	90.00	269.67	6,958.5	687.3	-7,984.7	8,014.2	0.00	0.00	0.00	
14,905.2	90.00	269.67	6,958.5	687.3	-7,989.9	8,019.4	0.00	0.00	0.00	

<b>Database:</b>	EDMNEW	<b>Local Co-ordinate Reference:</b>	Well Carlson B-15-16HC
<b>Company:</b>	Bayswater Exploration & Production, LLC	<b>TVD Reference:</b>	WELL @ 4643.5ft (RKB - 22.5')
<b>Project:</b>	SEC.15-T5N-R65W	<b>MD Reference:</b>	WELL @ 4643.5ft (RKB - 22.5')
<b>Site:</b>	Carlson 15-D Pad Sec.15-T5N-R65W	<b>North Reference:</b>	True
<b>Well:</b>	Carlson B-15-16HC	<b>Survey Calculation Method:</b>	Minimum Curvature
<b>Wellbore:</b>	Wellbore #1		
<b>Design:</b>	Plan #2 (6-18-15)		

Planned Survey										
Measured Depth (ft)	Inclination (°)	Azimuth (°)	Vertical Depth (ft)	+N/-S (ft)	+E/-W (ft)	Vertical Section (ft)	Dogleg Rate (°/100ft)	Build Rate (°/100ft)	Turn Rate (°/100ft)	

Targets										
Target Name	Dip Angle (°)	Dip Dir. (°)	TVD (ft)	+N/-S (ft)	+E/-W (ft)	Northing (ft)	Easting (ft)	Latitude	Longitude	
- hit/miss target										
- Shape										
SHL 1057'FNL, 249'FI	0.00	0.00	1.0	0.0	0.0	1,391,065.17	3,239,262.05	40.403694	-104.640862	
- plan hits target center										
- Point										
BHL 325'FNL, 2342'FI	0.00	0.00	6,958.5	687.3	-7,989.9	1,391,675.00	3,231,266.24	40.405577	-104.669551	
- plan hits target center										
- Point										

Casing Points										
Measured Depth (ft)	Vertical Depth (ft)	Name				Casing Diameter (")	Hole Diameter (")			
7,432.4	6,958.5	7"				7	7-1/2			

Plan Annotations					
Measured Depth (ft)	Vertical Depth (ft)	Local Coordinates		Comment	
		+N/-S (ft)	+E/-W (ft)		
400.0	400.0	0.0	0.0	KOP - Start Build 1.50	
4,752.0	4,689.7	689.6	187.0	Start Drop -2.00	
5,265.1	5,200.0	733.8	199.0	Start 1042.3 hold at 5265.1 MD	
6,307.4	6,242.3	733.8	199.0	Start Build 8.00	
7,432.4	6,958.5	729.7	-517.2	Start 7472.8 hold at 7432.4 MD	
14,905.2	6,958.5	687.3	-7,989.9	TD at 14905.2	