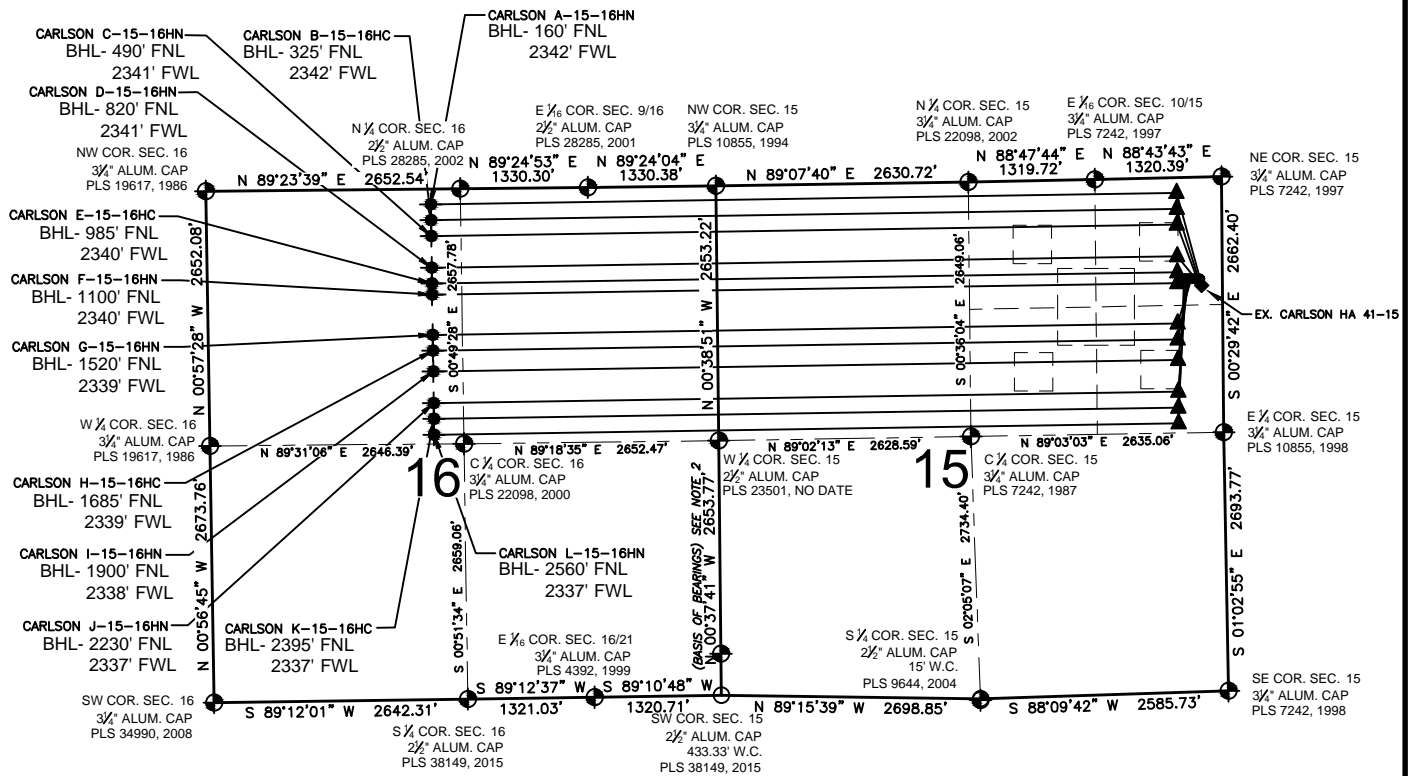


# CARLSON 15-D PAD MULTI-WELL PLAN



**NOTES:**  
 CARLSON A-15-16HN TO BE AT 1057' FNL, 234' FEL.  
 BOTTOM HOLE AT 160' FNL & 2342' FWL, SEC 16.  
 CARLSON B-15-16HC TO BE AT 1057' FNL, 249' FEL.  
 BOTTOM HOLE AT 325' FNL & 2342' FWL, SEC 16.  
 CARLSON C-15-16HN TO BE AT 1057' FNL, 264' FEL.  
 BOTTOM HOLE AT 490' FNL & 2341' FWL, SEC 16.  
 CARLSON D-15-16HN TO BE AT 1056' FNL, 279' FEL.  
 BOTTOM HOLE AT 820' FNL & 2341' FWL, SEC 16.  
 CARLSON E-15-16HC TO BE AT 1056' FNL, 294' FEL.  
 BOTTOM HOLE AT 985' FNL & 2340' FWL, SEC 16.  
 CARLSON F-15-16HN TO BE AT 1056' FNL, 309' FEL.  
 BOTTOM HOLE AT 1100' FNL & 2340' FWL, SEC 16.  
 CARLSON G-15-16HN TO BE AT 1055' FNL, 324' FEL.  
 BOTTOM HOLE AT 1520' FNL & 2339' FWL, SEC 16.  
 CARLSON H-15-16HC TO BE AT 1055' FNL, 339' FEL.  
 BOTTOM HOLE AT 1685' FNL & 2339' FWL, SEC 16.  
 CARLSON I-15-16HN TO BE AT 1055' FNL, 354' FEL.  
 BOTTOM HOLE AT 1900' FNL & 2338' FWL, SEC 16.  
 CARLSON J-15-16HN TO BE AT 1054' FNL, 369' FEL.  
 BOTTOM HOLE AT 2230' FNL & 2337' FWL, SEC 16.  
 CARLSON K-15-16HC TO BE AT 1054' FNL, 384' FEL.  
 BOTTOM HOLE AT 2395' FNL & 2337' FWL, SEC 16.  
 CARLSON L-15-16HN TO BE AT 1054' FNL, 399' FEL.  
 BOTTOM HOLE AT 2560' FNL & 2337' FWL, SEC 16.

EX. WELL CARLSON HA 41-15 IS 1135' FNL & 227' FEL.

**LEGEND**

- ⊕ = EXISTING MONUMENT
- ⊙ = CALCULATED POSITION
- = PROPOSED WELL
- ▲ = LANDING POINT
- ⊕ = BOTTOM HOLE
- ◆ = EXISTING WELL
- LP = LANDING POINT
- BH = BOTTOM HOLE

- NOTES:**
- THIS FIELD SURVEY CONFORMS TO THE MINIMUM STANDARDS SET BY THE C.O.G.C.C., RULE NO. 215
  - BEARINGS ARE BASED UPON THE ASSUMPTION THAT THE WEST LINE OF THE SOUTHWEST QUARTER OF SECTION 15, BEARS N00°37'41"W BETWEEN THE MONUMENTS SHOWN HEREON.
  - GRID DISTANCES ARE SHOWN, AS GPS MEASURED IN THE FIELD, WITH TIES TO WELLS MEASURED PERPENDICULAR TO SECTION LINES. TO GET GROUND DISTANCES MULTIPLY THE SHOWN DISTANCE BY 1.000258264.
  - FIELD VERIFICATION OF MONUMENTS COMPLETED FEBRUARY 11, 2015. WELL STAKING COMPLETED ON MARCH 20, 2015.

PREPARED BY:  Petroleum Field Services, LLC 7535 Hilltop Circle Denver, CO 80221	FIELD DATE: 03-20-15	SITE NAME: CARLSON 15-D PAD	PREPARED FOR:
	DRAWING DATE: 06-18-15	SURFACE LOCATION: NE 1/4 NE 1/4, SEC. 15, T5N, R65W, 6TH P.M. WELD COUNTY, COLORADO	
	BY: CSG	CHECKED BY: KAD	BAYSWATER EXPLORATION AND PRODUCTION, L.L.C.