

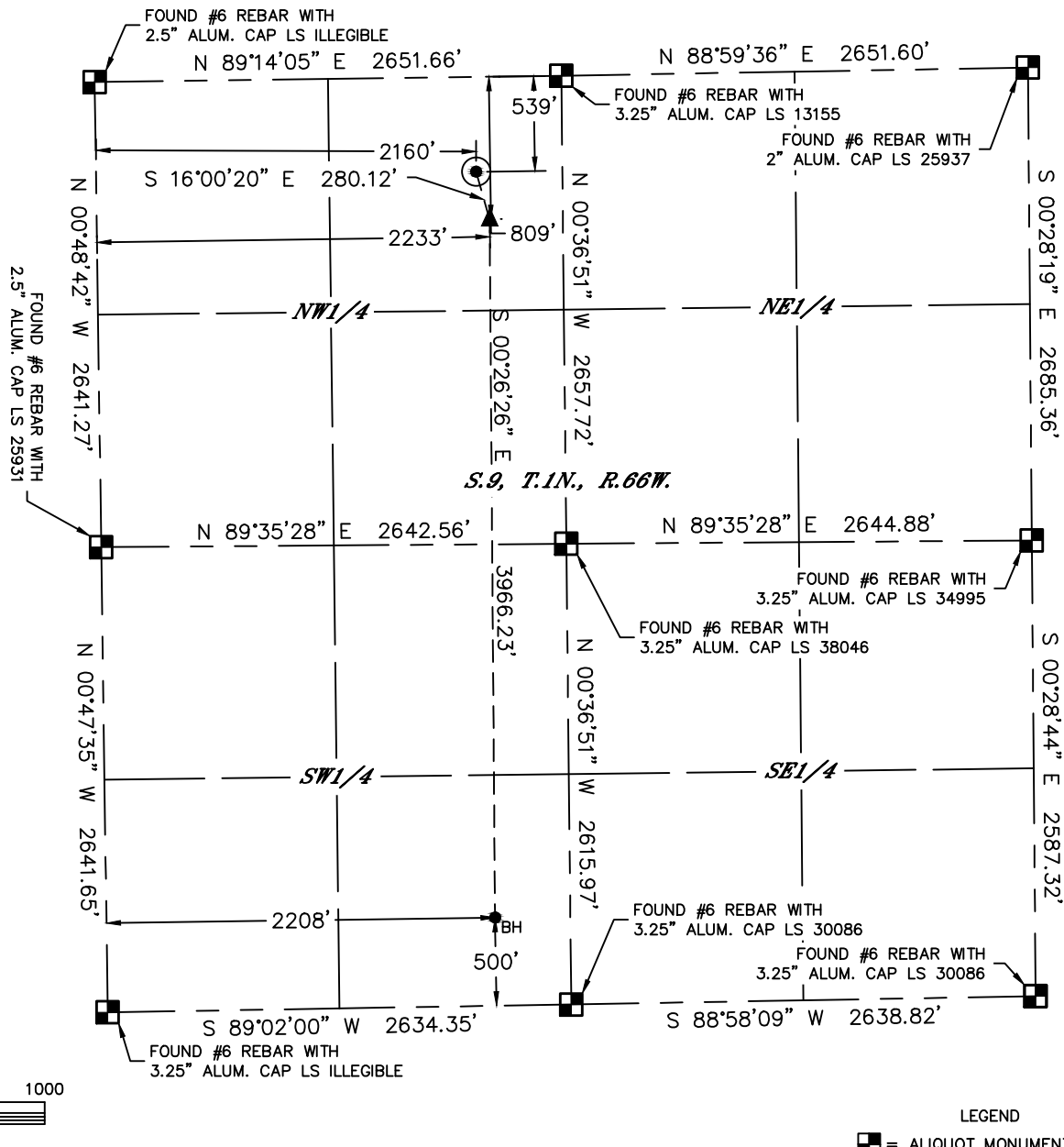


Lat40°, Inc. 6250 W. 10th Street, Unit 2, Greeley, CO 970-515-5294

WELL LOCATION CERTIFICATE

FITZSIMMONS 9M-443

SECTION: 9
TOWNSHIP: 1N
RANGE: 66W
6TH. P.M.
WELD COUNTY, CO



CLIENT: PDC ENERGY					LANDMAN: BARNEY HAMMOND				
INSTRUMENT OPERATOR: ADAM BEAUPREZ					SURVEY DATE: 9/30/2014		SURFACE USE: PASTURE		
SHL FOOTAGE				SHL LAT °	SHL LONG °	SHL PDOP	SHL ELEV (FT.)	SHL 1/4/1/4	SHL S-T-R
539	FNL	2160	FWL	40.07149	-104.78397	1.7	4990	NENW	9-1-66

BHL FOOTAGE				BHL LAT °	BHL LONG °	BHL S-T-R	EP LAT °	EP LONG °	EP S-T-R
500	FSL	2208	FWL	40.05986	-104.78371	9-1-66	40.07075	-104.78370	9-1-66

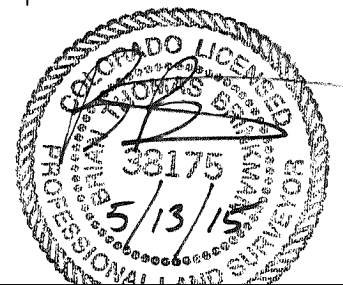
NOTE:

- 1) Bearings shown are Grid Bearings of the Colorado State Plane Coordinate System, North Zone, North American Datum 1983. The lineal dimensions as contained herein are based upon the "U.S. Survey Foot."
- 2) Distances to section lines measured at 90 degrees from said section lines.
- 3) Ground elevations are based on an observed GPS elevation (NAVD 1988 DATUM).
- 4) Latitude and Longitude shown are (NAD 83 DATUM).
- 5) IMPROVEMENTS: See LOCATION DRAWING for all visible improvements within 500' of oil and gas location.
- 6) This map does not represent a boundary survey.

NEAREST CULTURAL ITEMS	
BUILDING	±370' NW
BUILDING UNIT	±459' NW
HIGH OCCUPANCY BUILDING UNIT	±3872' NE
DESIGNATED OUTSIDE ACTIVITY AREA	5280'+
PUBLIC ROAD (COUNTY ROAD 12)	±516' N
ABOVE GROUND UTILITY	±314' NW
RAILROAD	5280'+
PROPERTY LINE	±490' E

LEGEND

- = ALIQUOT MONUMENT AS DESCRIBED
- = CALCULATED POSITION
- = SURFACE HOLE LOCATION (SHL)
- ▲ = ENTRY POINT LOCATION (EP)
- BH = BOTTOM HOLE LOCATION (BHL)
- ⊕ = EXISTING WELL
- ⊖ = ABANDONED WELL



Brian T. Brinkman, On Behalf of Lat40°, Inc.
Colorado Licensed Professional Land Surveyor No. 38175
DATE: 05/13/2015
PROJECT#: 2014179

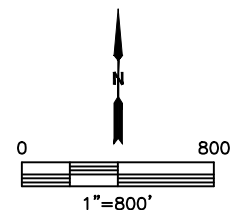
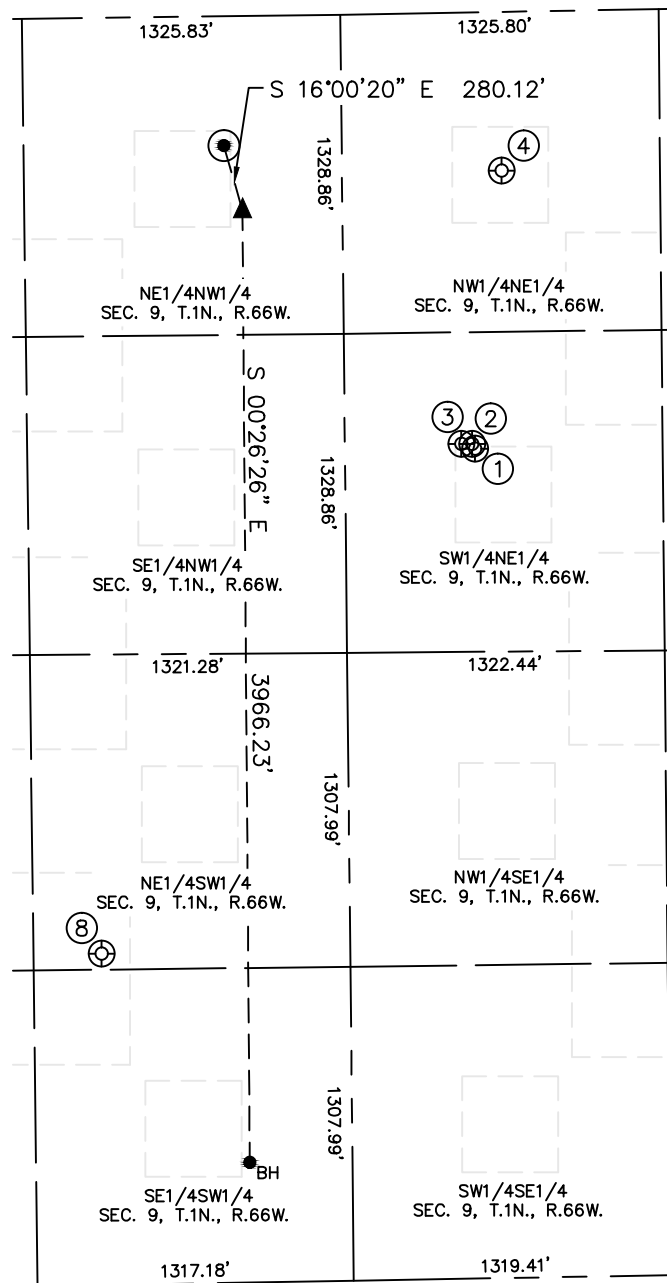


Lat40°, Inc. 6250 W. 10th Street, Unit 2, Greeley, CO 970-515-5294

SITE SKETCH

FITZSIMMONS 9M-443

SECTION: 9
TOWNSHIP: 1N
RANGE: 66W
6TH. P.M.
WELD COUNTY, CO



WELL NO.	WELL NAME	SHL FOOTAGE				SHL LAT°	SHL LONG°	PDOP	ELEV (FT.)	1/4/1/4
1	FT LUPTON HIGHLAND USX WW 09-22D	1817	FNL	2105	FEL	40.06800	-104.78027	2.3	5020	SWNE
2	FT LUPTON HIGHLANDS USX WW 09-18D	1797	FNL	2117	FEL	40.06806	-104.78032	2.3	5020	SWNE
3	FT. LUPTON HIGHLANDS 32-9	1796	FNL	2163	FEL	40.06806	-104.78048	2.3	5020	SWNE
4	FT LUPTON HIGHLANDS 31-9	662	FNL	1985	FEL	40.07118	-104.77984	1.9	4996	NWNE
8	LEONARD AVEY ET AL 1	1380	FSL	1602	FWL	40.06226	-104.78589	2.8	4999	NESW

DATE: 05/13/2015
PROJECT#: 2014179