



Corporate Office
1775 Sherman Street, #3000
Denver, Colorado 80203
303.860.5800
www.pdce.com

May 29, 2015

Department of Natural Resources
Oil and Gas Conservation Commission
The Chancery Building
Attn: Matt Lepore
1120 Lincoln St., Suite 801
Denver, CO 80203

Re: **30 Day Certification Letter – Rule 318Ae**
Fitzsimmons 9J-303
NENW, Section 9-T1N-R66W, 6th PM
Weld County, Colorado

Dear Director,

PDC Energy, Inc. ("PDC") hereby certifies to the Director that a thirty (30-day) notice has been given by certified mail to all owners in the proposed wellbore spacing unit consisting of the SEC. 9: W2 in T1N R66W: 320 acres. We have not received any objections to such well location or proposed spacing unit, therefore, PDC hereby requests the Director to approve the well.

If you should have any questions or concerns regarding this permit, please contact the undersigned at (303) 860-5800.

Sincerely,

A handwritten signature in blue ink that reads "Kelsi Welch".

Kelsi Welch
Regulatory Analyst
PDC Energy

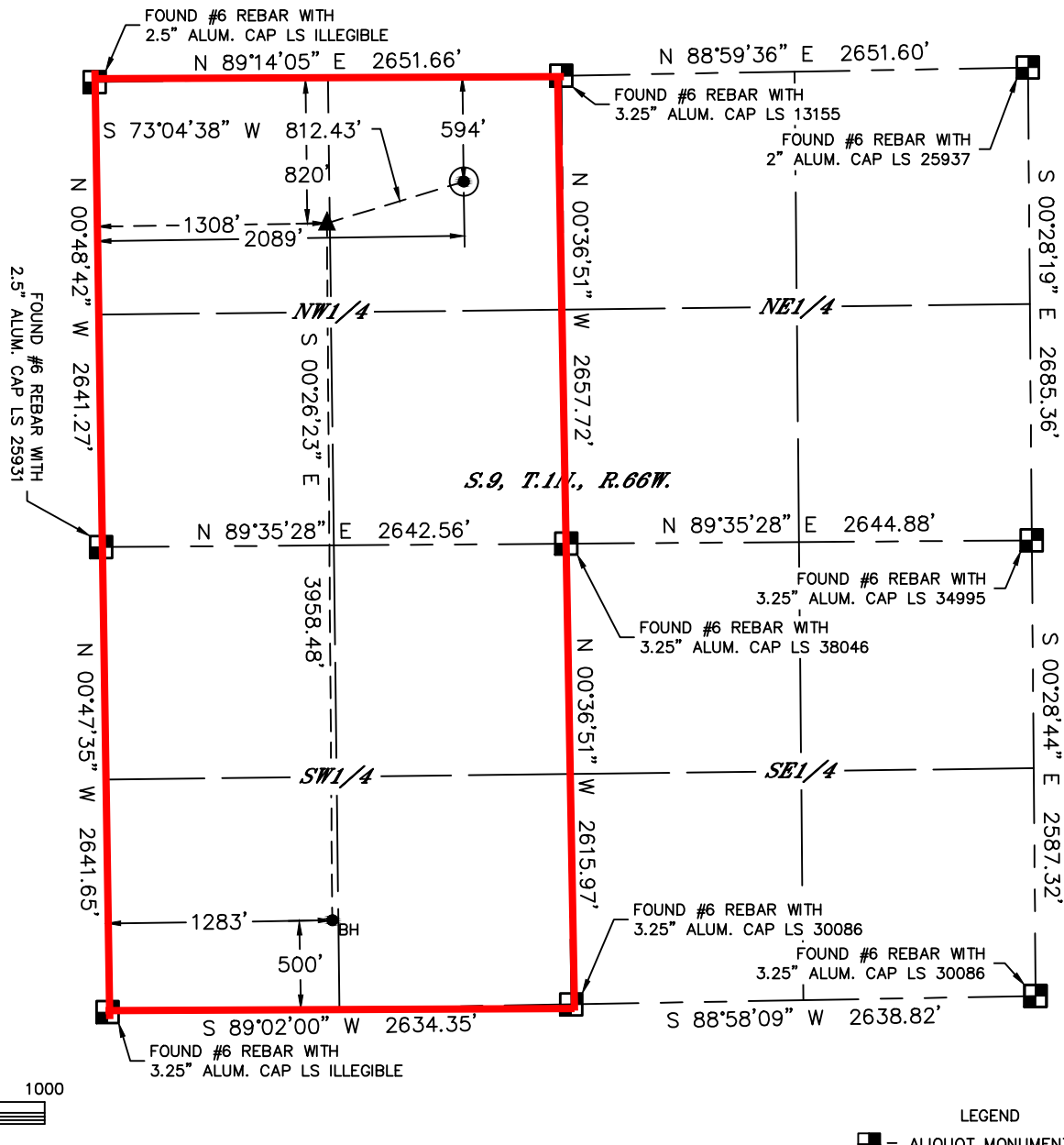


Lat40°, Inc. 6250 W. 10th Street, Unit 2, Greeley, CO 970-515-5294

WELL LOCATION CERTIFICATE

FITZSIMMONS 9J-303

SECTION: 9
TOWNSHIP: 1N
RANGE: 66W
6TH. P.M.
WELD COUNTY, CO



| | | | | | | | |
|------------------------------------|-----------|------------|----------|-------------------------|-------------|-----------|------|
| CLIENT: PDC ENERGY | | | | LANDMAN: BARNEY HAMMOND | | | |
| INSTRUMENT OPERATOR: ADAM BEAUPREZ | | | | SURVEY DATE: 4/6/2015 | | | |
| SURFACE USE: PASTURE | | | | | | | |
| SHL FOOTAGE | SHL LAT ° | SHL LONG ° | SHL PDOP | SHL ELEV (FT.) | SHL 1/4 1/4 | SHL S-T-R | |
| 594 | FNL | 2089 | FWL | 40.07134 | -104.78422 | 2.2 | 4990 |
| | | | | NENW | | | |
| | | | | 9-1-66 | | | |

| | | | | | | |
|-------------|-----------|------------|-----------|------------|------------|-----------|
| BHL FOOTAGE | BHL LAT ° | BHL LONG ° | BHL S-T-R | EP LAT ° | EP LONG ° | EPS S-T-R |
| 500 | FSL | 1283 | FWL | 40.05984 | -104.78701 | 9-1-66 |
| | | | | 70.07070 | | |
| | | | | -104.78701 | | |
| | | | | 9-1-66 | | |

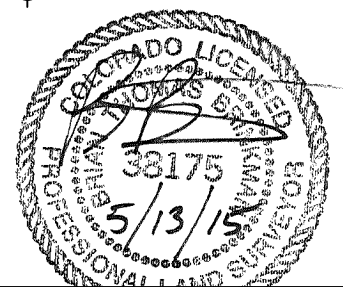
| NEAREST CULTURAL ITEMS | |
|----------------------------------|-----------|
| BUILDING | ±374' NW |
| BUILDING UNIT | ±490' NW |
| HIGH OCCUPANCY BUILDING UNIT | ±3940' NE |
| DESIGNATED OUTSIDE ACTIVITY AREA | 5280'+ |
| PUBLIC ROAD (COUNTY ROAD 12) | ±572' N |
| ABOVE GROUND UTILITY | ±318' NW |
| RAILROAD | 5280'+ |
| PROPERTY LINE | ±561' E |

NOTE:

- 1) Bearings shown are Grid Bearings of the Colorado State Plane Coordinate System, North Zone, North American Datum 1983. The lineal dimensions as contained herein are based upon the "U.S. Survey Foot."
- 2) Distances to section lines measured at 90 degrees from said section lines.
- 3) Ground elevations are based on an observed GPS elevation (NAVD 1988 DATUM).
- 4) Latitude and Longitude shown are (NAD 83 DATUM).
- 5) IMPROVEMENTS: See LOCATION DRAWING for all visible improvements within 500' of oil and gas location.
- 6) This map does not represent a boundary survey.

LEGEND

- = ALIQUOT MONUMENT AS DESCRIBED
- = CALCULATED POSITION
- = SURFACE HOLE LOCATION (SHL)
- ▲ = ENTRY POINT LOCATION (EP)
- BH = BOTTOM HOLE LOCATION (BHL)
- ⊕ = EXISTING WELL
- ⊖ = ABANDONED WELL



Brian T. Brinkman, On Behalf of Lat40°, Inc.
Colorado Licensed Professional Land Surveyor No. 38175
DATE: 05/13/2015
PROJECT#: 2014179