



---

**Corporate Office**  
1775 Sherman Street, #3000  
Denver, Colorado 80203  
303.860.5800  
www.pdce.com

May 29, 2015

Department of Natural Resources  
Oil and Gas Conservation Commission  
The Chancery Building  
Attn: Matt Lepore  
1120 Lincoln St., Suite 801  
Denver, CO 80203

Re: **30 Day Certification Letter – Rule 318Ae**  
Fitzsimmons 9J-243  
NENW, Section 9-T1N-R66W, 6<sup>th</sup> PM  
Weld County, Colorado

Dear Director,

PDC Energy, Inc. ("PDC") hereby certifies to the Director that a thirty (30-day) notice has been given by certified mail to all owners in the proposed wellbore spacing unit consisting of the SEC. 9: W2W2 in T1N R66W: 160 acres. We have not received any objections to such well location or proposed spacing unit, therefore, PDC hereby requests the Director to approve the well.

If you should have any questions or concerns regarding this permit, please contact the undersigned at (303) 860-5800.

Sincerely,

A handwritten signature in blue ink that reads "Kelsi Welch".

Kelsi Welch  
Regulatory Analyst  
PDC Energy

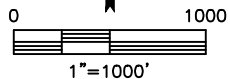
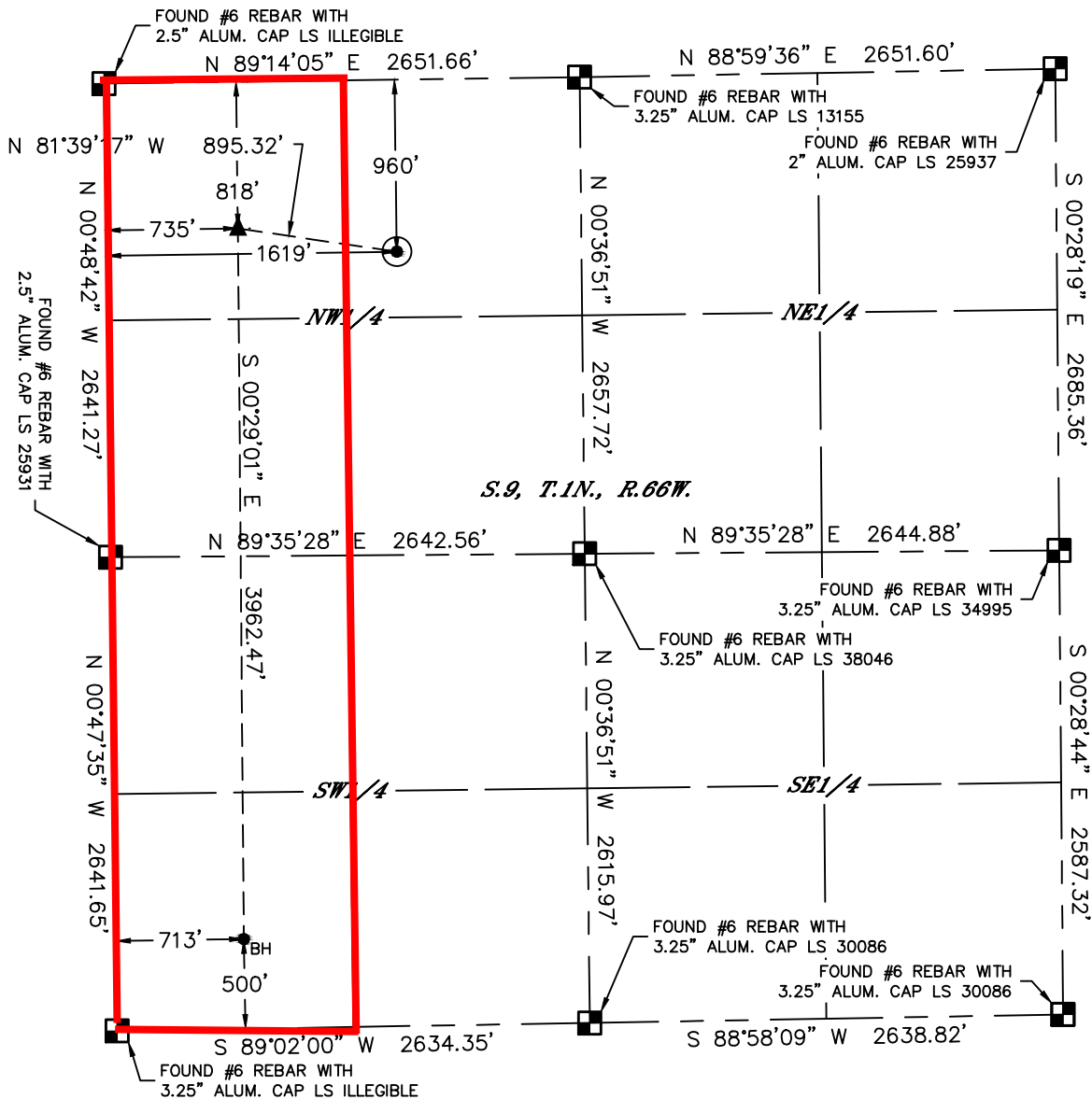


Lat40°, Inc. 6250 W. 10th Street, Unit 2, Greeley, CO 970-515-5294

# WELL LOCATION CERTIFICATE

FITZSIMMONS 9J-243

SECTION: 9  
TOWNSHIP: 1N  
RANGE: 66W  
6TH. P.M.  
WELD COUNTY, CO



CLIENT: PDC ENERGY						LANDMAN: BARNEY HAMMOND			
INSTRUMENT OPERATOR: ADAM BEAUPREZ						SURVEY DATE: 9/30/2014		SURFACE USE: PASTURE	
SHL FOOTAGE			SHL LAT °		SHL LONG °	SHL PDOP	SHL ELEV (FT.)	SHL 1/4/1/4	SHL S-T-R
960	FNL	1619	FWL	40.07033	-104.78589	2.3	4992	NENW	9-1-66

BHL FOOTAGE				BHL LAT °	BHL LONG °	BHL S-T-R	EP LAT °	EP LONG °	EP S-T-R
500	FSL	713	FWL	40.05983	-104.78905	9-1-66	40.07070	-104.78905	9-1-66

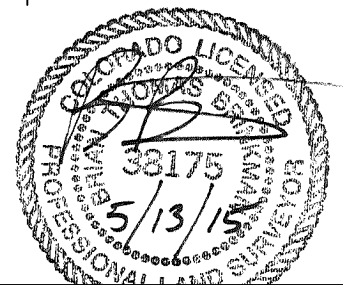
## NOTE:

- 1) Bearings shown are Grid Bearings of the Colorado State Plane Coordinate System, North Zone, North American Datum 1983. The lineal dimensions as contained herein are based upon the "U.S. Survey Foot."
- 2) Distances to section lines measured at 90 degrees from said section lines.
- 3) Ground elevations are based on an observed GPS elevation (NAVD 1988 DATUM).
- 4) Latitude and Longitude shown are (NAD 83 DATUM).
- 5) IMPROVEMENTS: See LOCATION DRAWING for all visible improvements within 500' of oil and gas location.
- 6) This map does not represent a boundary survey.

NEAREST CULTURAL ITEMS	
BUILDING	±733' NE
BUILDING UNIT	±911' NE
HIGH OCCUPANCY BUILDING UNIT	±4412' NE
DESIGNATED OUTSIDE ACTIVITY AREA	5280'+
PUBLIC ROAD (COUNTY ROAD 12)	±941' N
ABOVE GROUND UTILITY	±338' NW
RAILROAD	5280'+
PROPERTY LINE	±295' W

## LEGEND

- = ALIQUOT MONUMENT AS DESCRIBED
- = CALCULATED POSITION
- = SURFACE HOLE LOCATION (SHL)
- ▲ = ENTRY POINT LOCATION (EP)
- BH = BOTTOM HOLE LOCATION (BHL)
- ⊕ = EXISTING WELL
- ⊖ = ABANDONED WELL



Brian T. Brinkman, On Behalf of Lat40°, Inc.  
Colorado Licensed Professional Land Surveyor No. 38175  
DATE: 05/13/2015  
PROJECT#: 2014179