

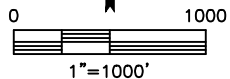
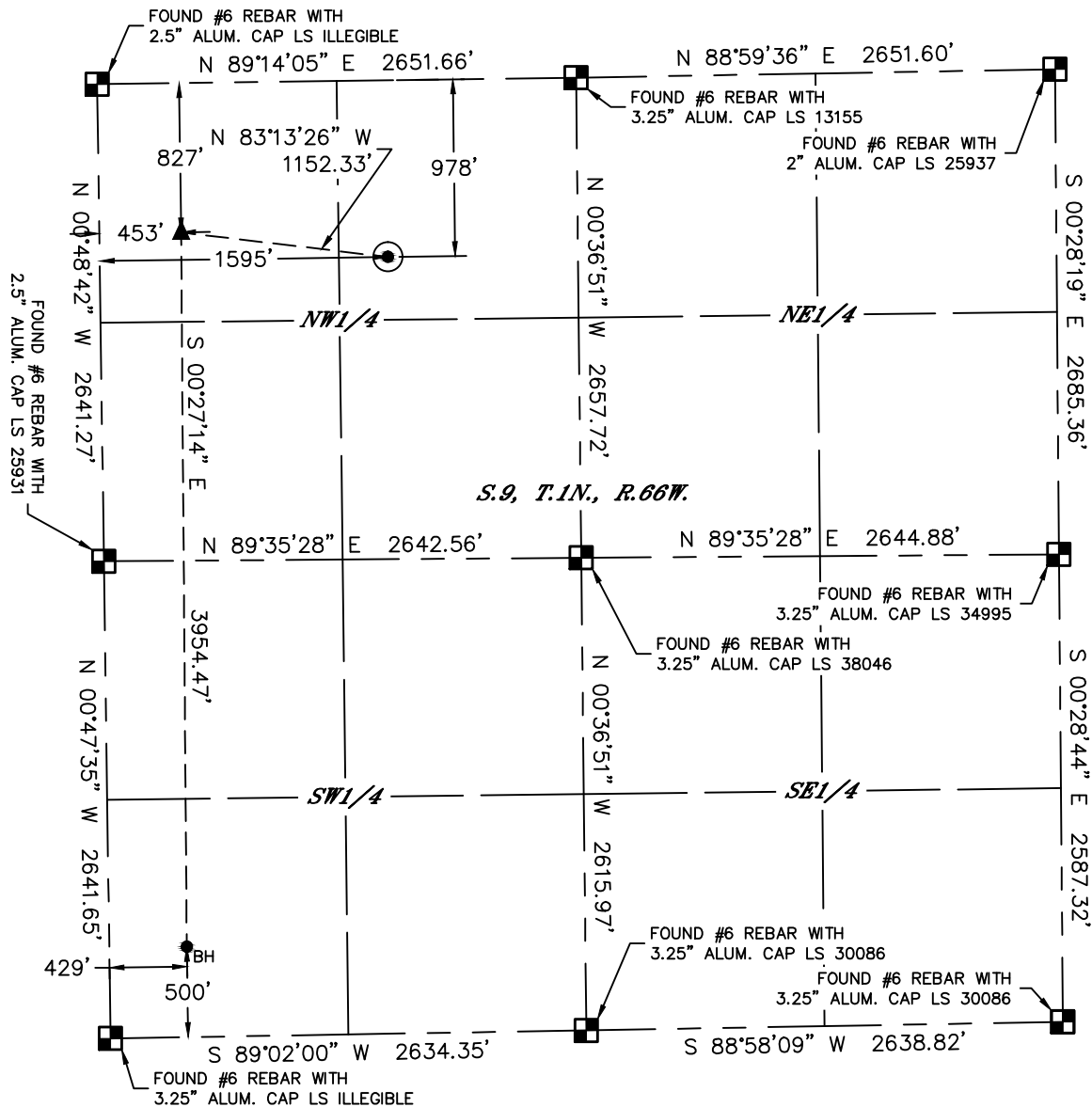


Lat40°, Inc. 6250 W. 10th Street, Unit 2, Greeley, CO 970-515-5294

WELL LOCATION CERTIFICATE

FITZSIMMONS 9E-323

SECTION: 9
TOWNSHIP: 1N
RANGE: 66W
6TH. P.M.
WELD COUNTY, CO



CLIENT: PDC ENERGY					LANDMAN: BARNEY HAMMOND				
INSTRUMENT OPERATOR: ADAM BEAUPREZ					SURVEY DATE: 9/30/2014		SURFACE USE: PASTURE		
SHL FOOTAGE			SHL LAT °	SHL LONG °	SHL PDOP	SHL ELEV (FT.)	SHL 1/4/1/4	SHL S-T-R	
978	FNL	1595	FWL	40.07027	-104.78598	2.3	4992	NENW	9-1-66

BHL FOOTAGE				BHL LAT °	BHL LONG °	BHL S-T-R	EP LAT °	EP LONG °	EP S-T-R
500	FSL	429	FWL	40.05982	-104.79006	9-1-66	40.07067	-104.79006	9-1-66

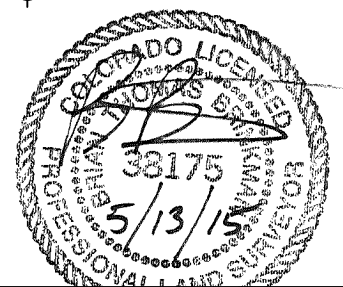
NOTE:

- 1) Bearings shown are Grid Bearings of the Colorado State Plane Coordinate System, North Zone, North American Datum 1983. The lineal dimensions as contained herein are based upon the "U.S. Survey Foot."
- 2) Distances to section lines measured at 90 degrees from said section lines.
- 3) Ground elevations are based on an observed GPS elevation (NAVD 1988 DATUM).
- 4) Latitude and Longitude shown are (NAD 83 DATUM).
- 5) IMPROVEMENTS: See LOCATION DRAWING for all visible improvements within 500' of oil and gas location.
- 6) This map does not represent a boundary survey.

LEGEND

- = ALIQUOT MONUMENT AS DESCRIBED
- = CALCULATED POSITION
- = SURFACE HOLE LOCATION (SHL)
- ▲ = ENTRY POINT LOCATION (EP)
- BH = BOTTOM HOLE LOCATION (BHL)
- ⊕ = EXISTING WELL
- ⊙ = ABANDONED WELL

NEAREST CULTURAL ITEMS	
BUILDING	±759' NE
BUILDING UNIT	±937' NE
HIGH OCCUPANCY BUILDING UNIT	±4436' NE
DESIGNATED OUTSIDE ACTIVITY AREA	5280'+
PUBLIC ROAD (COUNTY ROAD 12)	±960' N
ABOVE GROUND UTILITY	±338' NW
RAILROAD	5280'+
PROPERTY LINE	±271' W



Brian T. Brinkman, On Behalf of Lat40°, Inc.
Colorado Licensed Professional Land Surveyor No. 38175
DATE: 05/13/2015
PROJECT#: 2014179

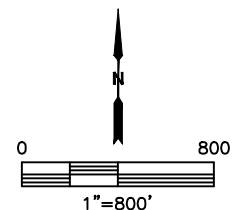
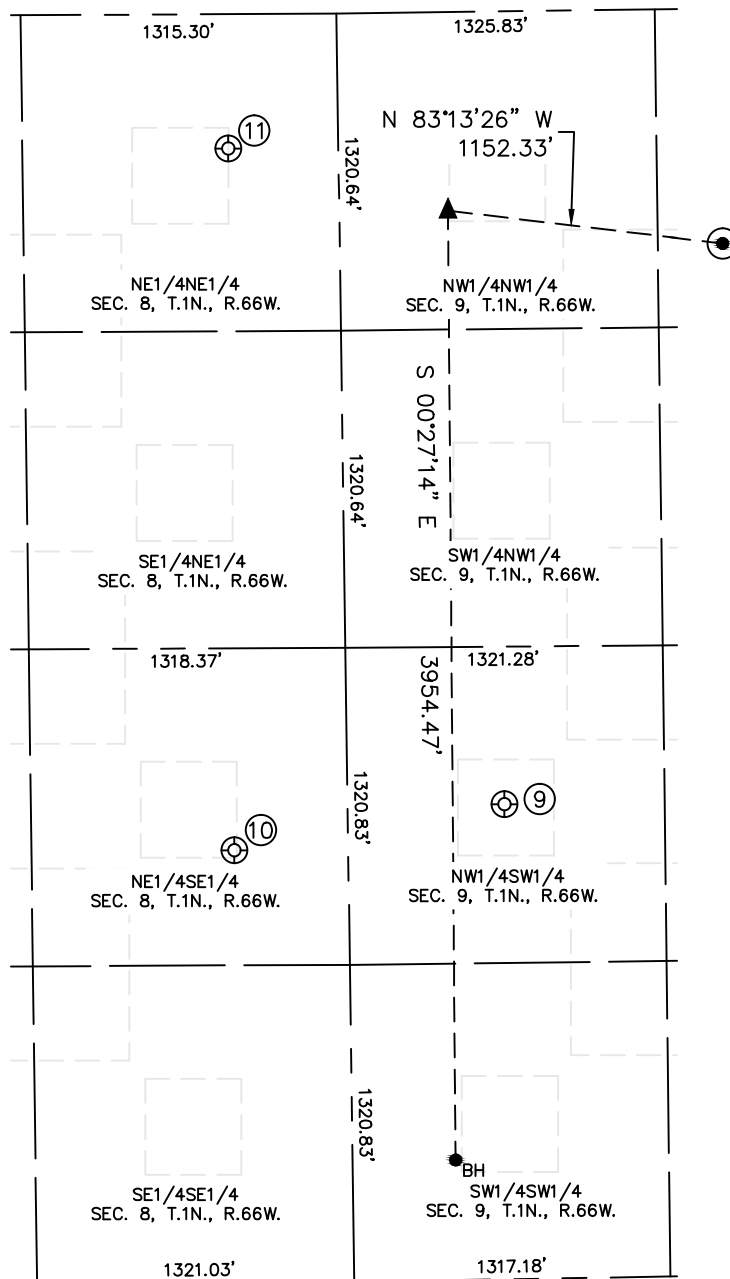


Lat40°, Inc. 6250 W. 10th Street, Unit 2, Greeley, CO 970-515-5294

SITE SKETCH

FITZSIMMONS 9E-323

SECTION: 9
TOWNSHIP: 1N
RANGE: 66W
6TH. P.M.
WELD COUNTY, CO



WELL NO.	WELL NAME	SHL FOOTAGE				SHL LAT°	SHL LONG°	PDOP	ELEV (FT.)	1/4/1/4
9	AVEY 31-9	1978	FSL	653	FWL	40.06388	-104.78929	2.8	4990	NWSW
10	ENSOR FEDERAL 9-8	1800	FSL	474	FEL	40.06338	-104.79332	2.8	4962	NESE
11	SUTTON FOUNDERS 1	560	FNL	458	FEL	40.07140	-104.79332	2.7	4958	NENE

DATE: 05/13/2015
PROJECT#: 2014179