

Date / Time		LWD Run No.	Measured Depth (ft.)	Mud Type	Density (sg)	Viscosity (cp)	pH	Fluid Loss (cc)	Oil / Water	Source	Total Chlorides (ppm)	K+ (%)
18/Apr/2015	18:00	1	2670	Innovert	9.0	55	N/A	N/A	55 / 36	Active Pits	78000	0.0
19/Apr/2015	18:00	1	7303	Innovert	9.2	53	N/A	5.8	54 / 36	Active Pits	72000	0.0
20/Apr/2015	18:00	1	10682	Innovert	9.3	49	N/A	5.4	54 / 35	Active Pits	83000	0.0
21/Apr/2015	20:00	2	12906	Innovert	9.4	58	N/A	5.8	54/35	Active Pits	71000	0.0

Mnemonics

Curve	Description	Units
GRAX	Gamma Ray Apparent, 0.5 ft. Avg.	API
GRTX	Gamma Ray Time Since Drilled	Min.
GRIX	Gamma Ray Data Density	Unitless
GRSI	Gamma Ray Slide Indicator	Unitless
ROPA	Rate of Penetration, 3.0 ft. Avg.	Ft./Hr.
TCDX	Downhole Temperature	Deg. F.
TVD	True Vertical Depth	Ft.
WOBA	Surface Weight on Bit, 1.0 ft. Avg.	K. lbs.

Equipment and Service Data

LWD Run No.	Tool	Serial Number	Measurement	Bit Offset (ft.)	Max O.D. (in.)	Min I.D. (in.)
1	DIR	11710701	Directional	50.10	6.750	3.125
1	SRIG	12554661	Gamma	46.73	6.750	3.125
2	DIR	11710701	Directional	50.91	6.750	3.125
2	SRIG	12554661	Gamma	47.54	6.750	3.125

Service and Tool Mnemonics

Mnemonic	Name	Description
DIR	Directional	Wellbore directional survey
SRIG	Inclination and Gamma	Probe based gamma ray and inclination module

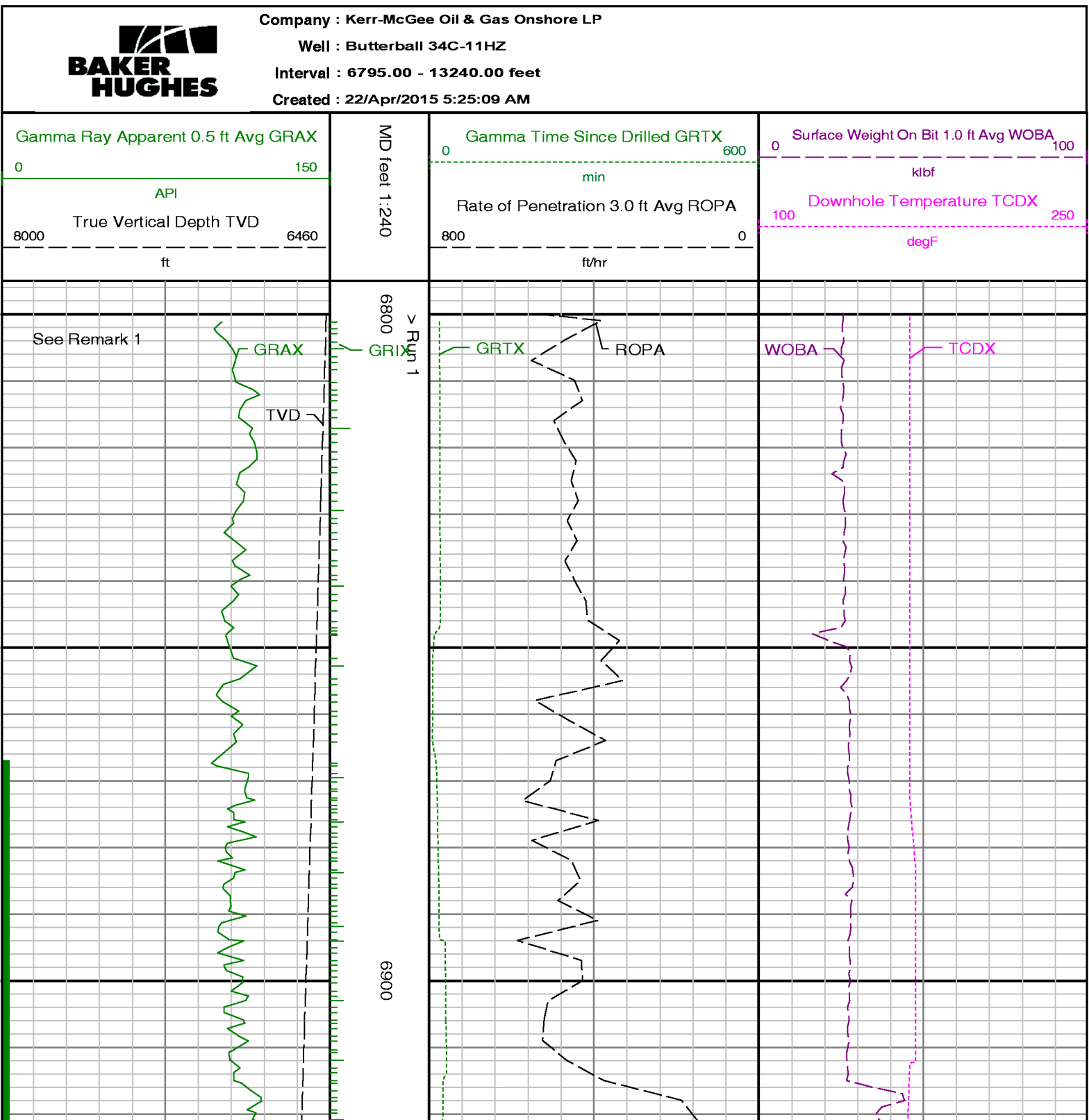
Comments

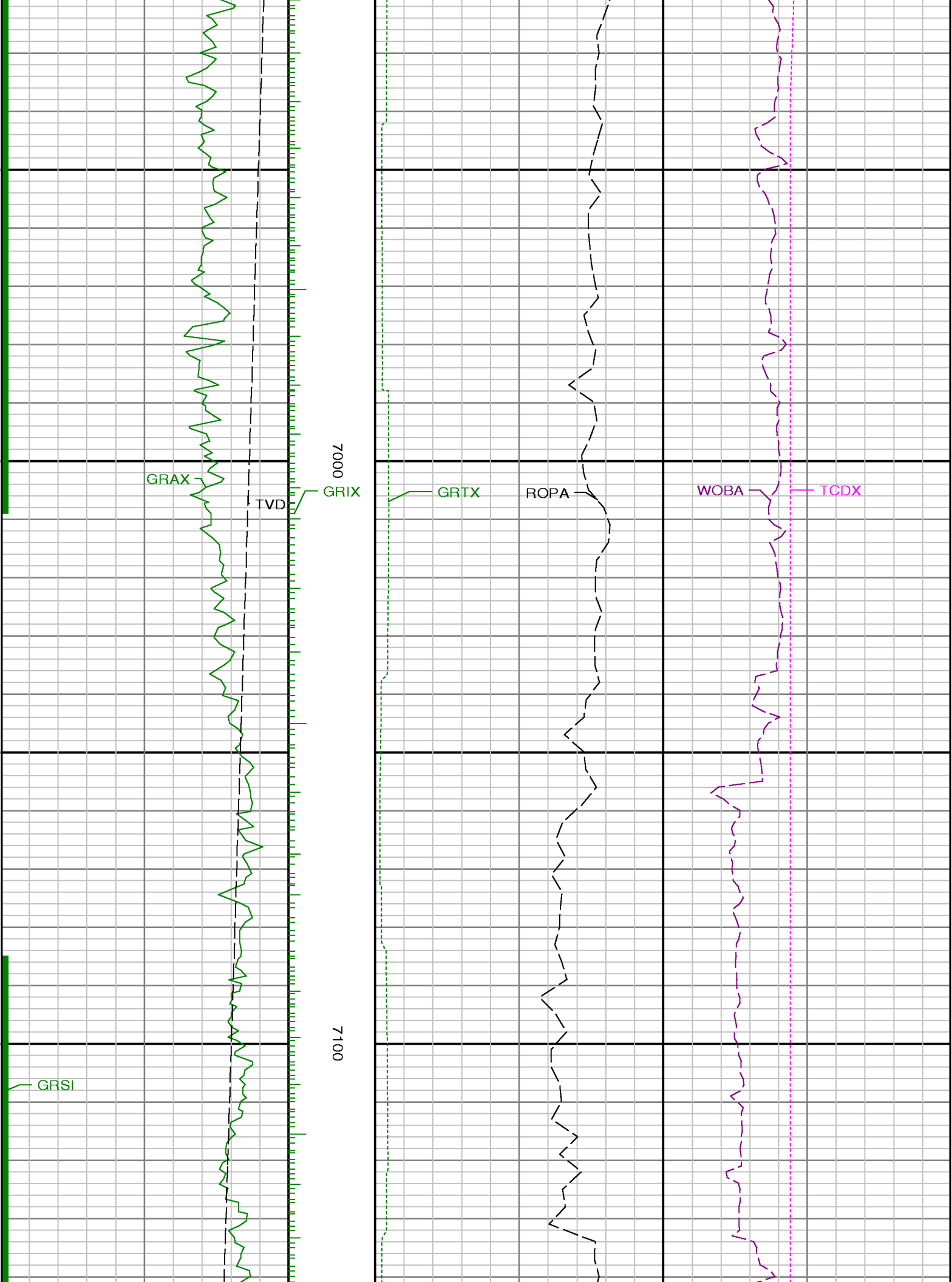
<p>1) Baker Hughes INTEQ runs 1 & 2 utilized a 6 1/2 inch NaviGamma (Directional and Gamma Ray) tool ran behind an 7 7/8 inch bit with a steerable assembly from 6800 feet to 13240 feet MD (6477 feet to 13190 feet TVD).</p> <p>2) Depth measurements obtained from a depth control system not supplied or operated by Baker Hughes INTEQ. Due to lack of control by Baker Hughes INTEQ logging engineers, depth calibration and measurements could not be independently verified.</p> <p>3) A sliding indicator is shown on the left side of track 1 as a heavy line. The indicator has been shifted to the Gamma Ray sensor offset to correspond with Gamma Ray data acquired while sliding.</p>
--

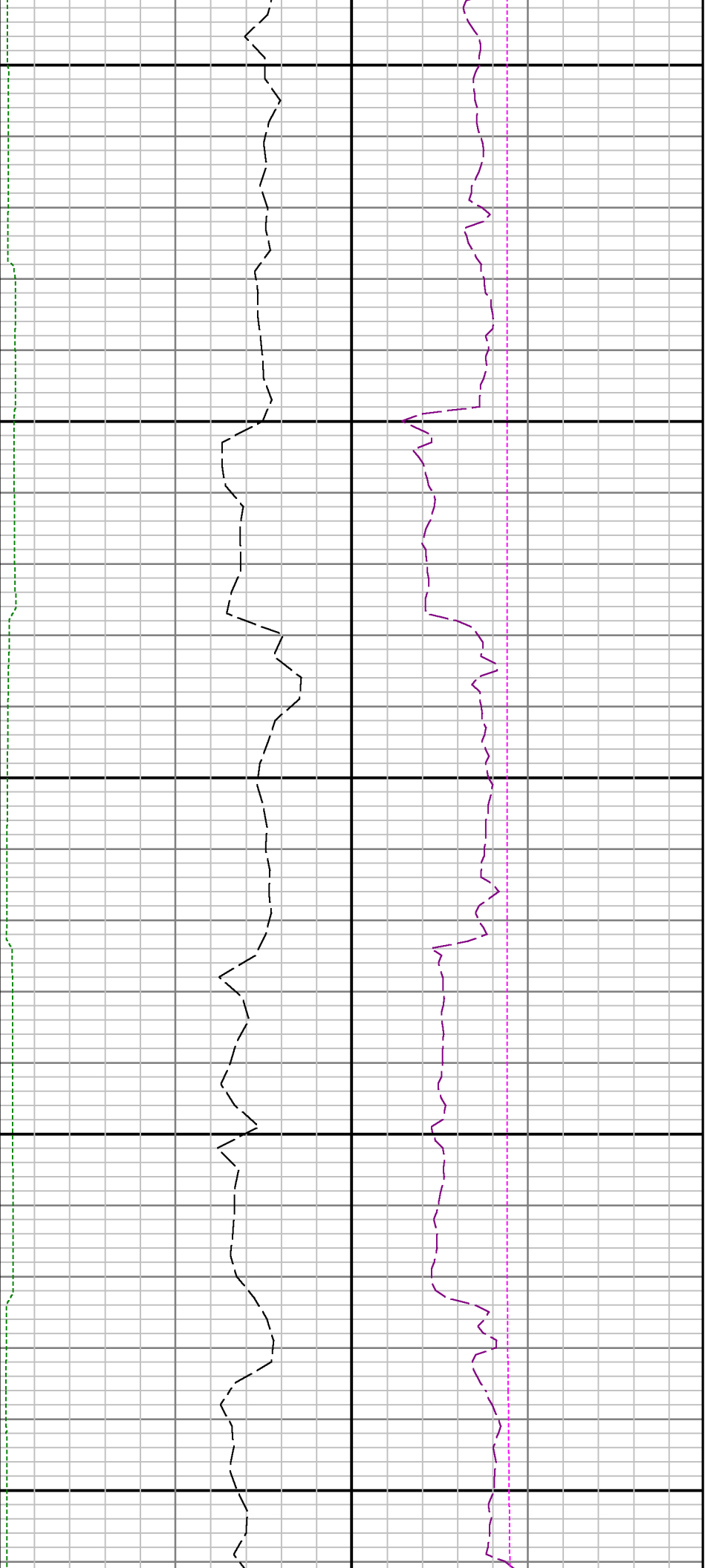
Remarks

Number	Measured	Hole	LWD	Remark
--------	----------	------	-----	--------

	Depth (ft.)	Section (in.)	Run No.	
1	6800	7.875	1	The interval from surface to 6800 feet MD (16 to 6477 feet TVD) was not logged due to directional only services required up to the curve.
2	12860	7.875	2	The interval from 12860 to 12906 feet MD (7502 to 7502 feet TVD) was logged up to 20 hours after being drilled due to trip out of hole to change BHA.
3	13190	7.875	2	The interval from 13190 to 13240 feet MD (7499 to 7497 feet TVD) has no GRAX, GRIX or GRTX due to the Gamma Ray sensor offset to bit.

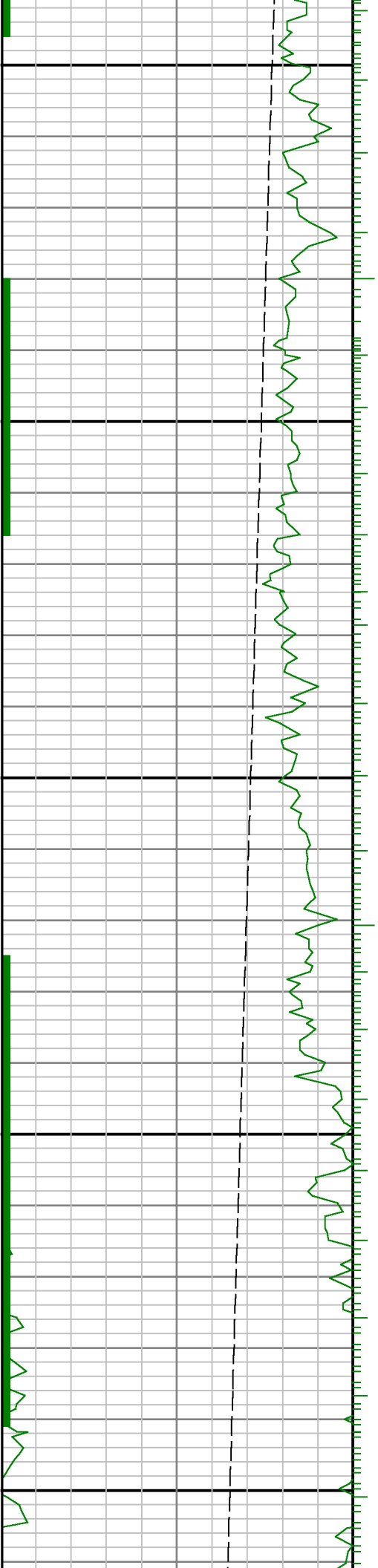


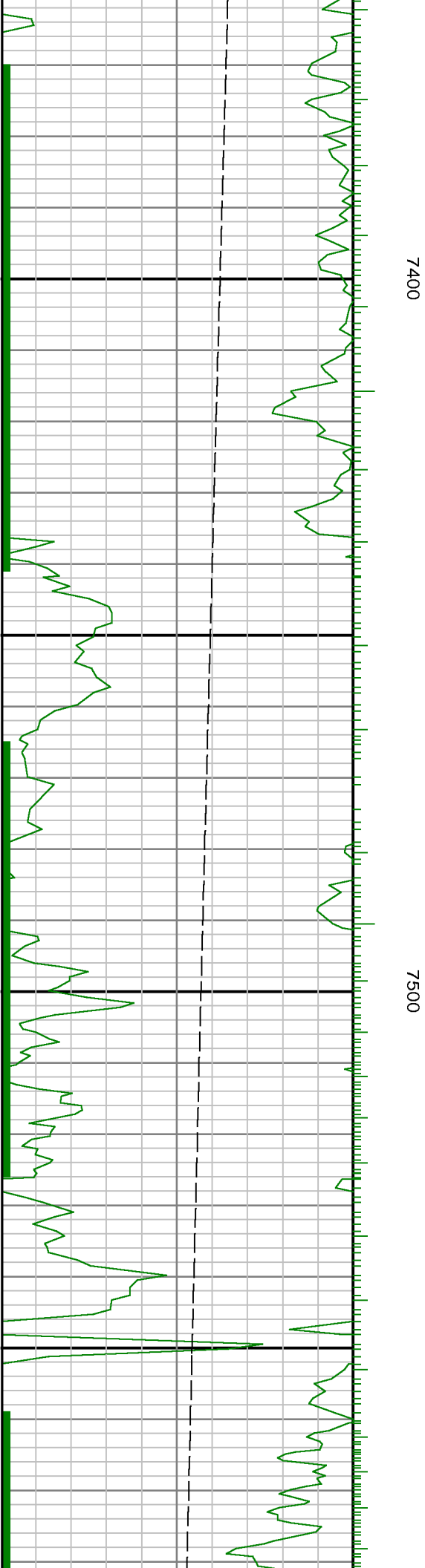


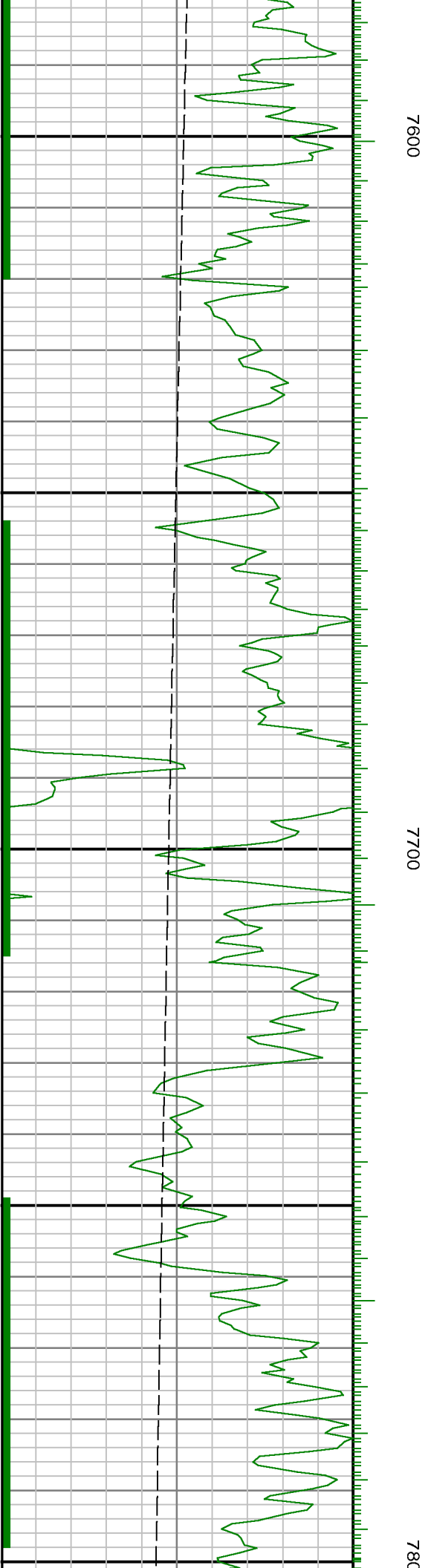
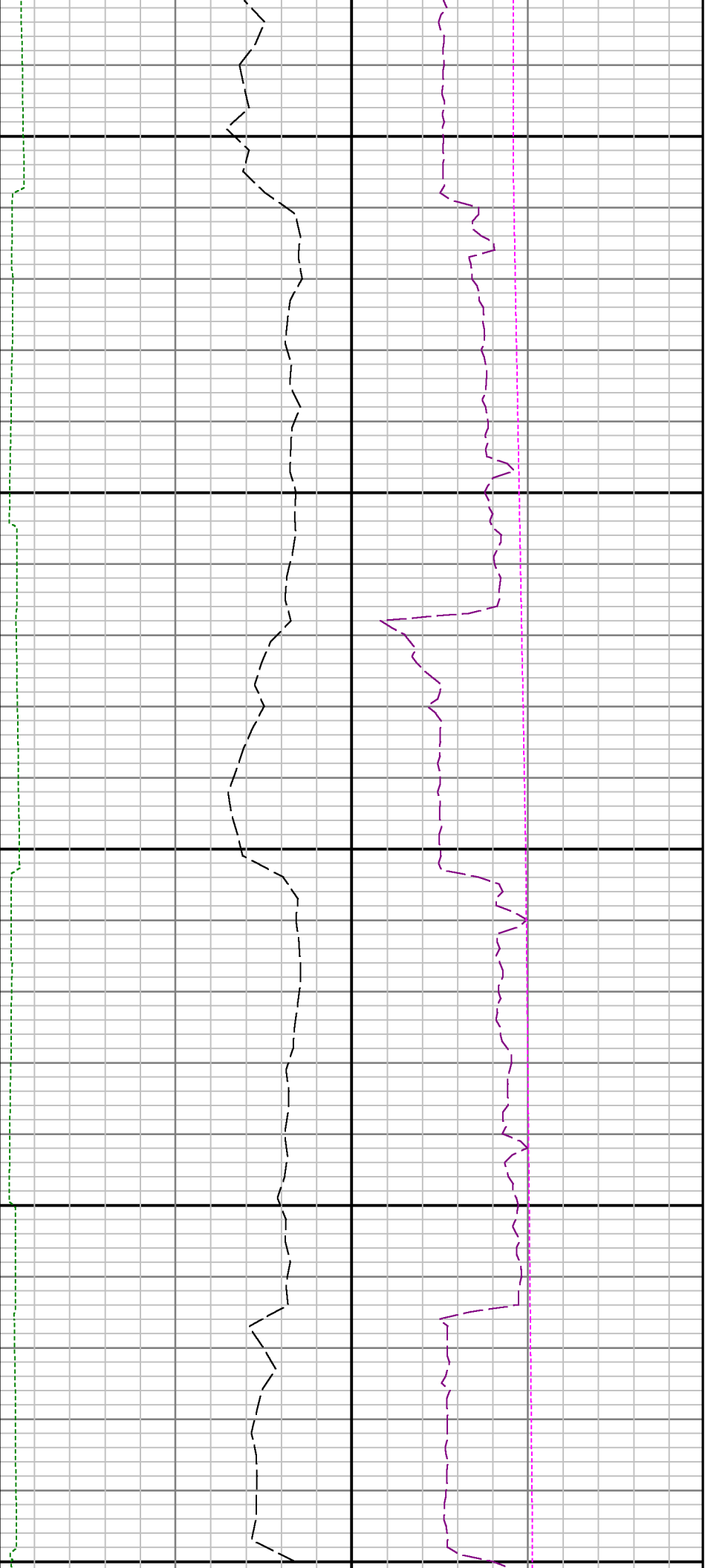


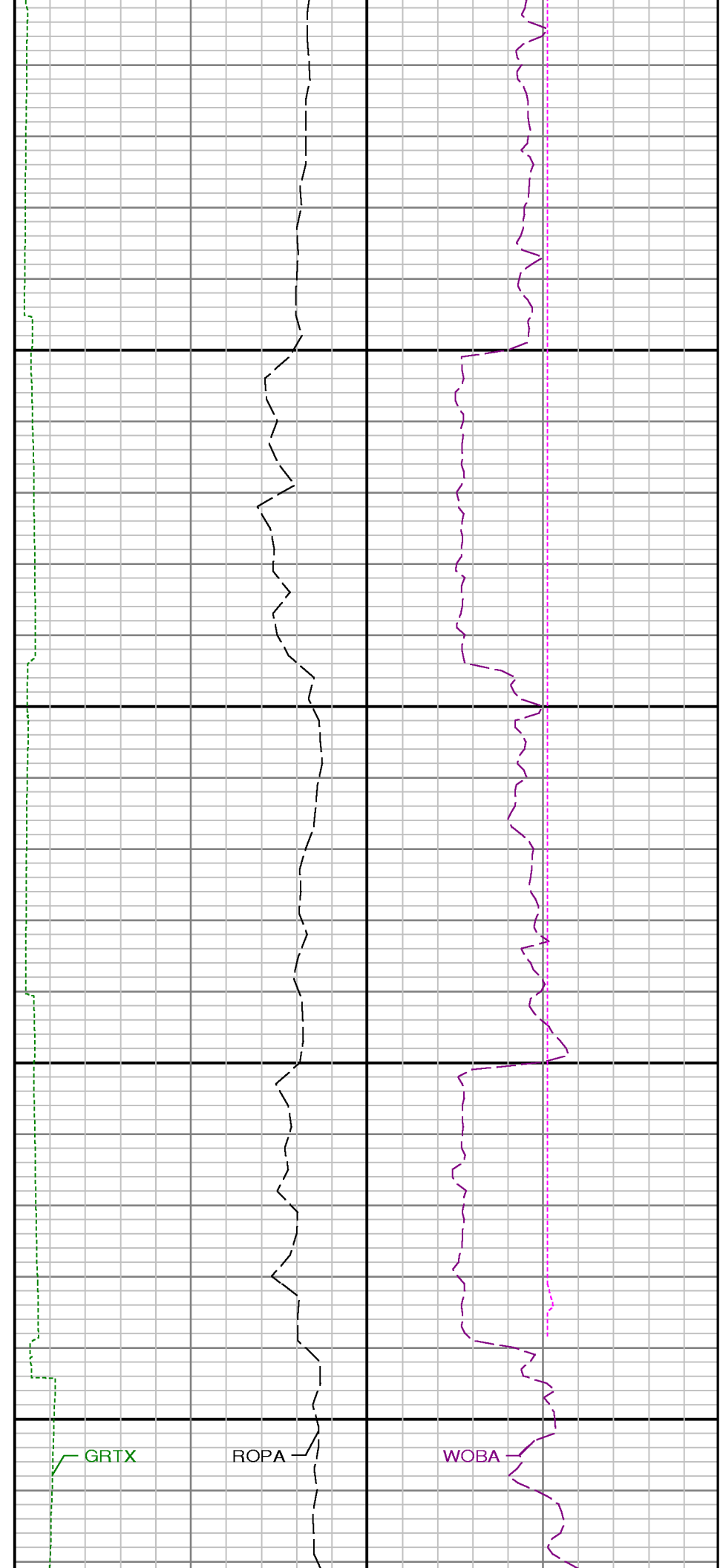
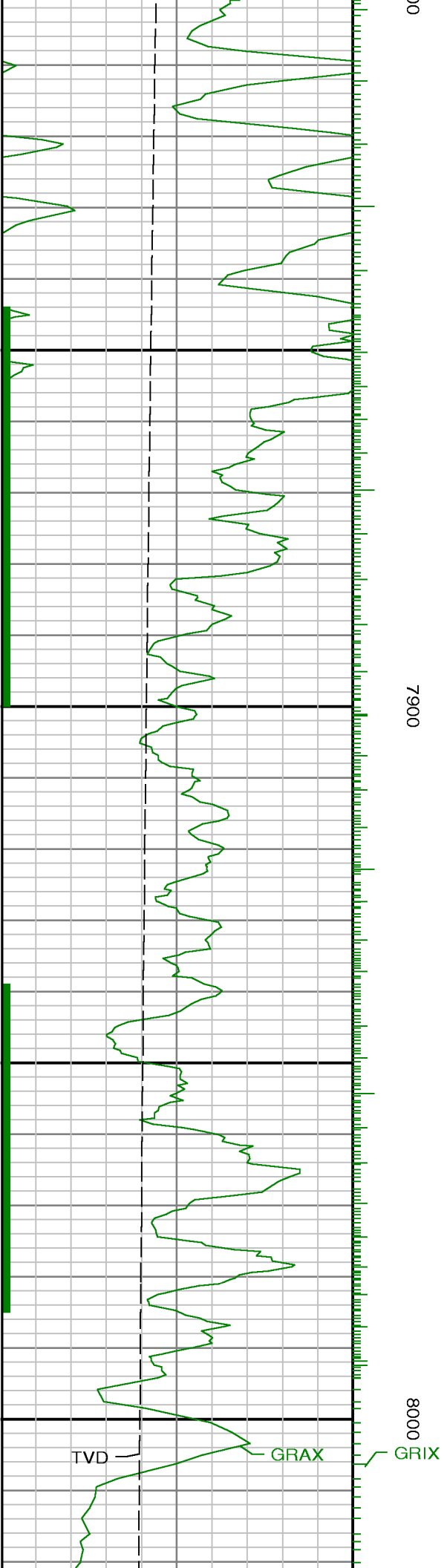
7200

7300





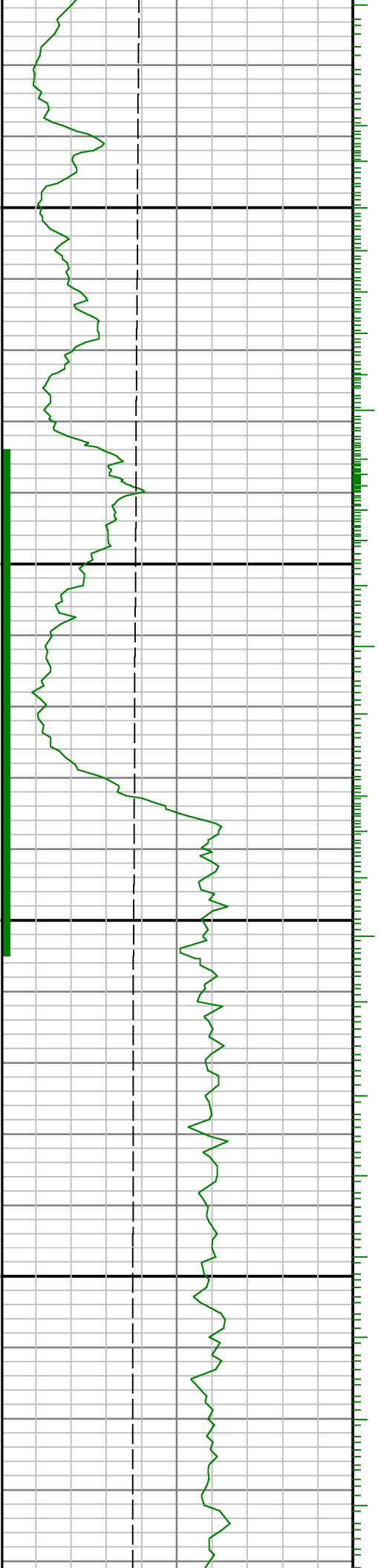


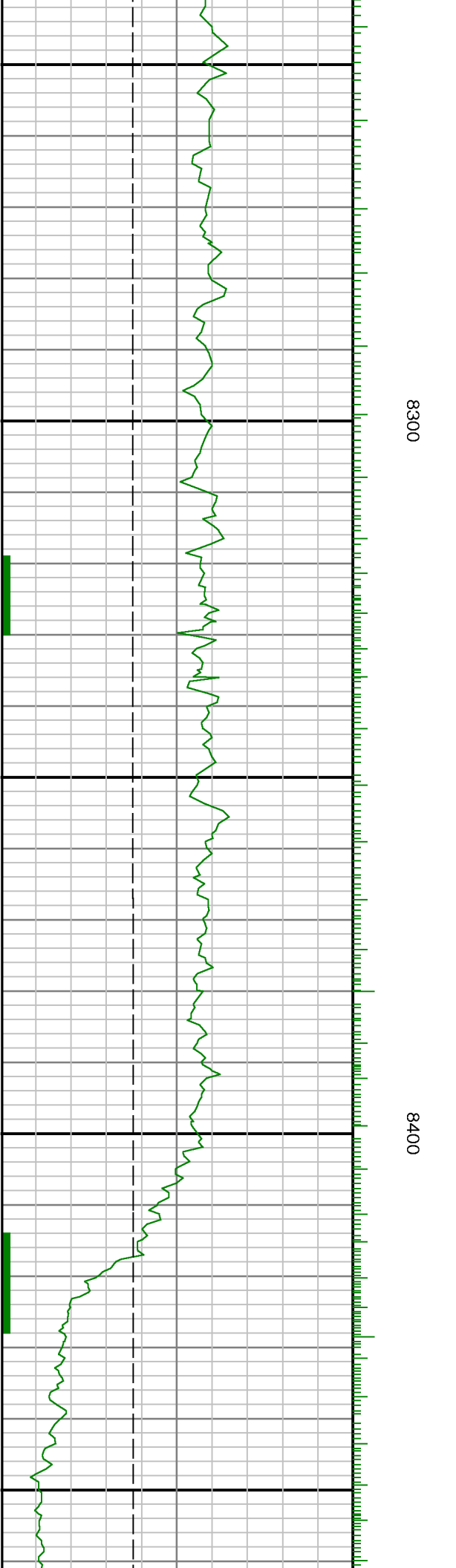
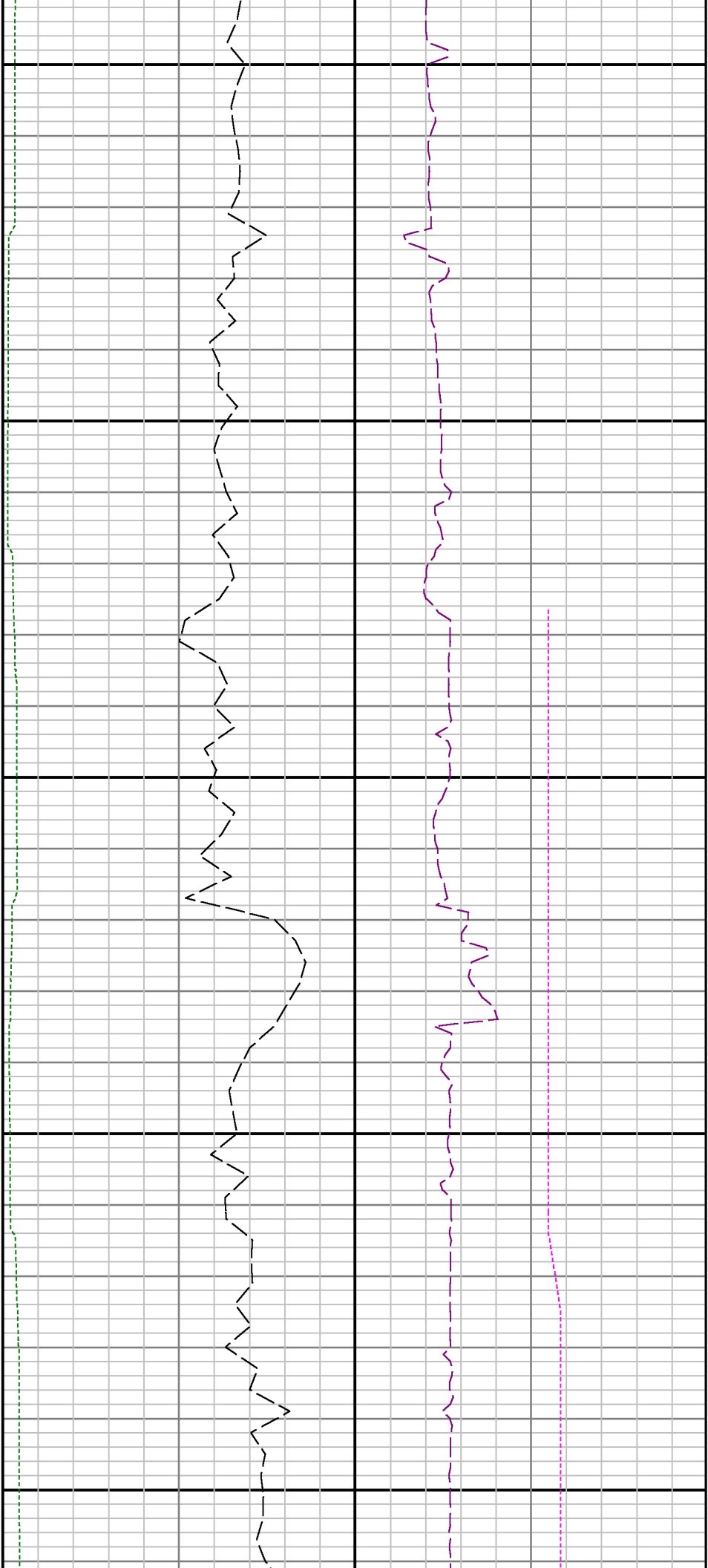


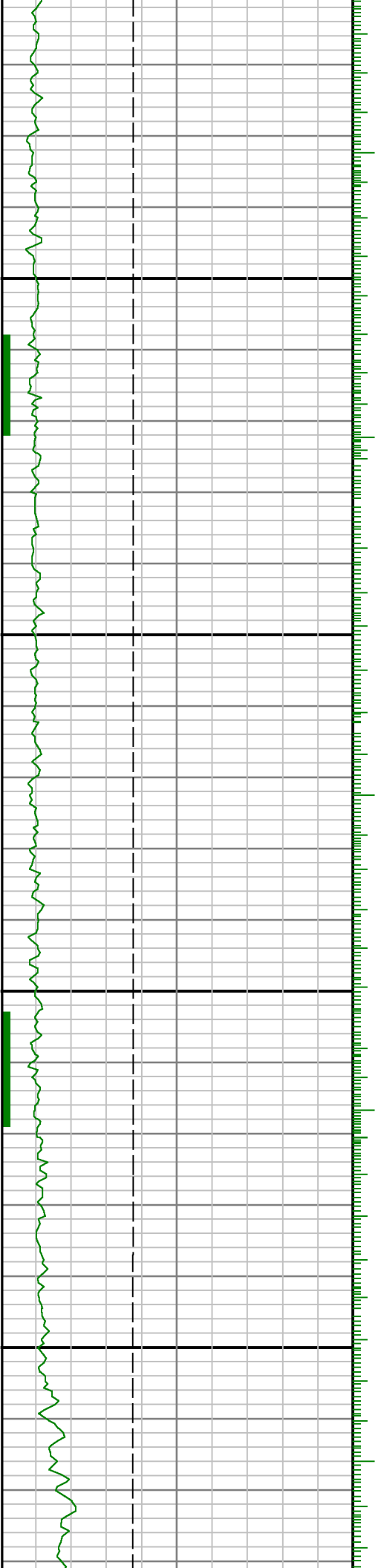


8100

8200



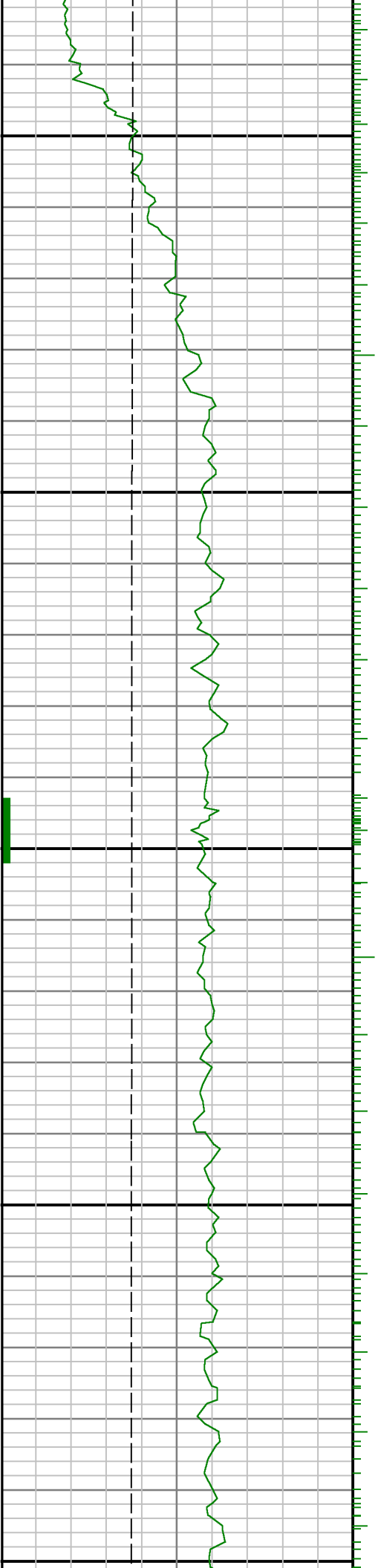




8500

0098

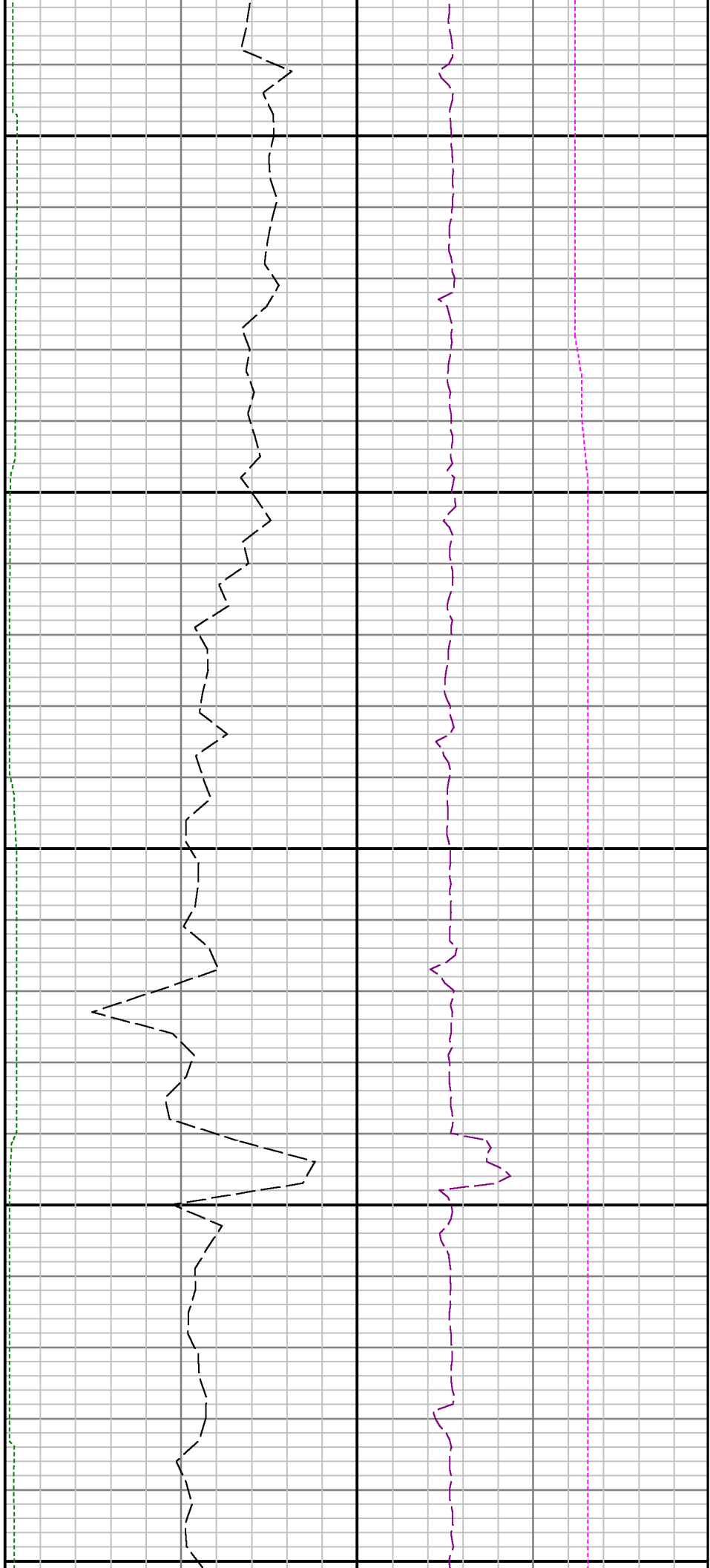


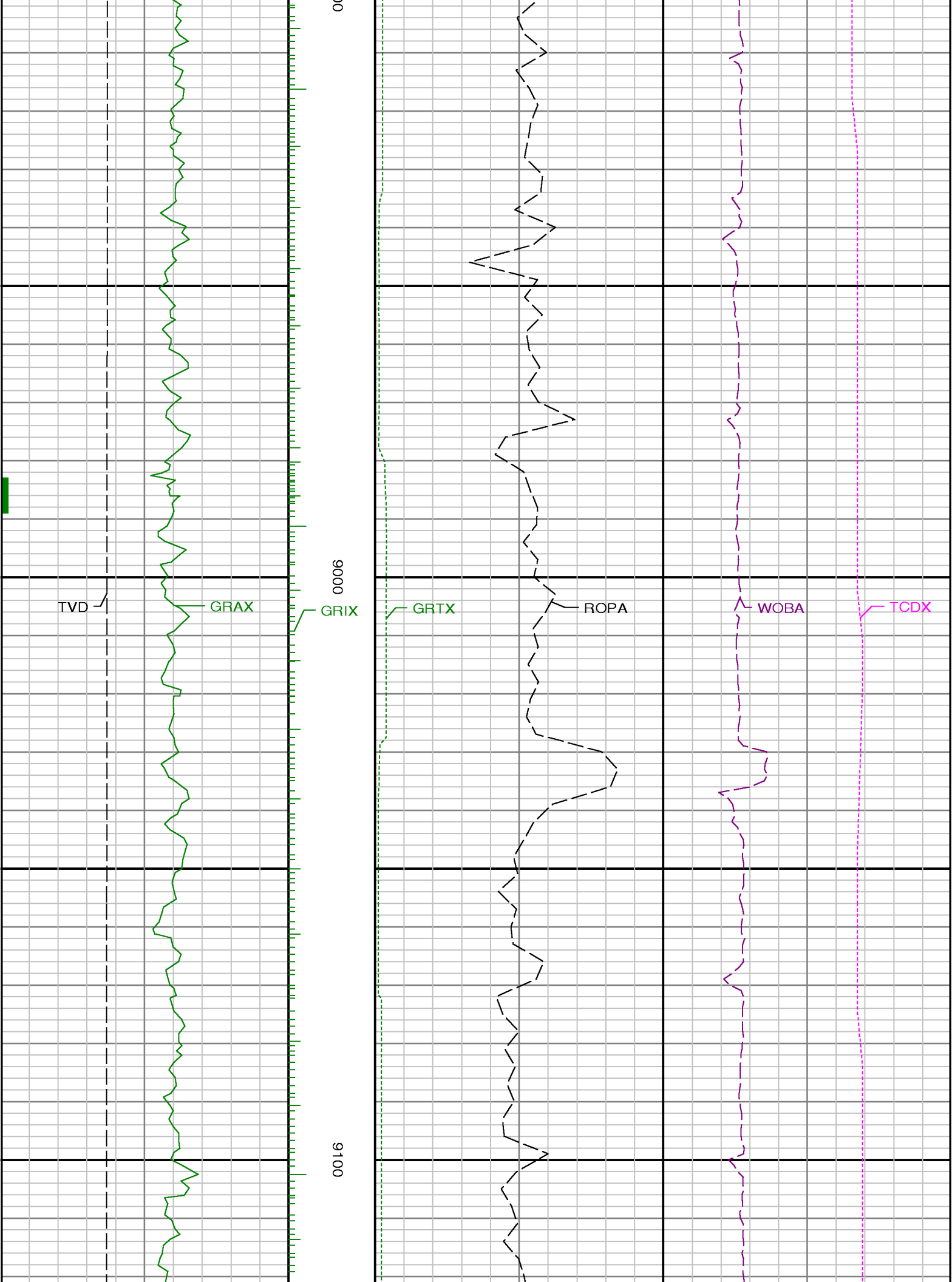


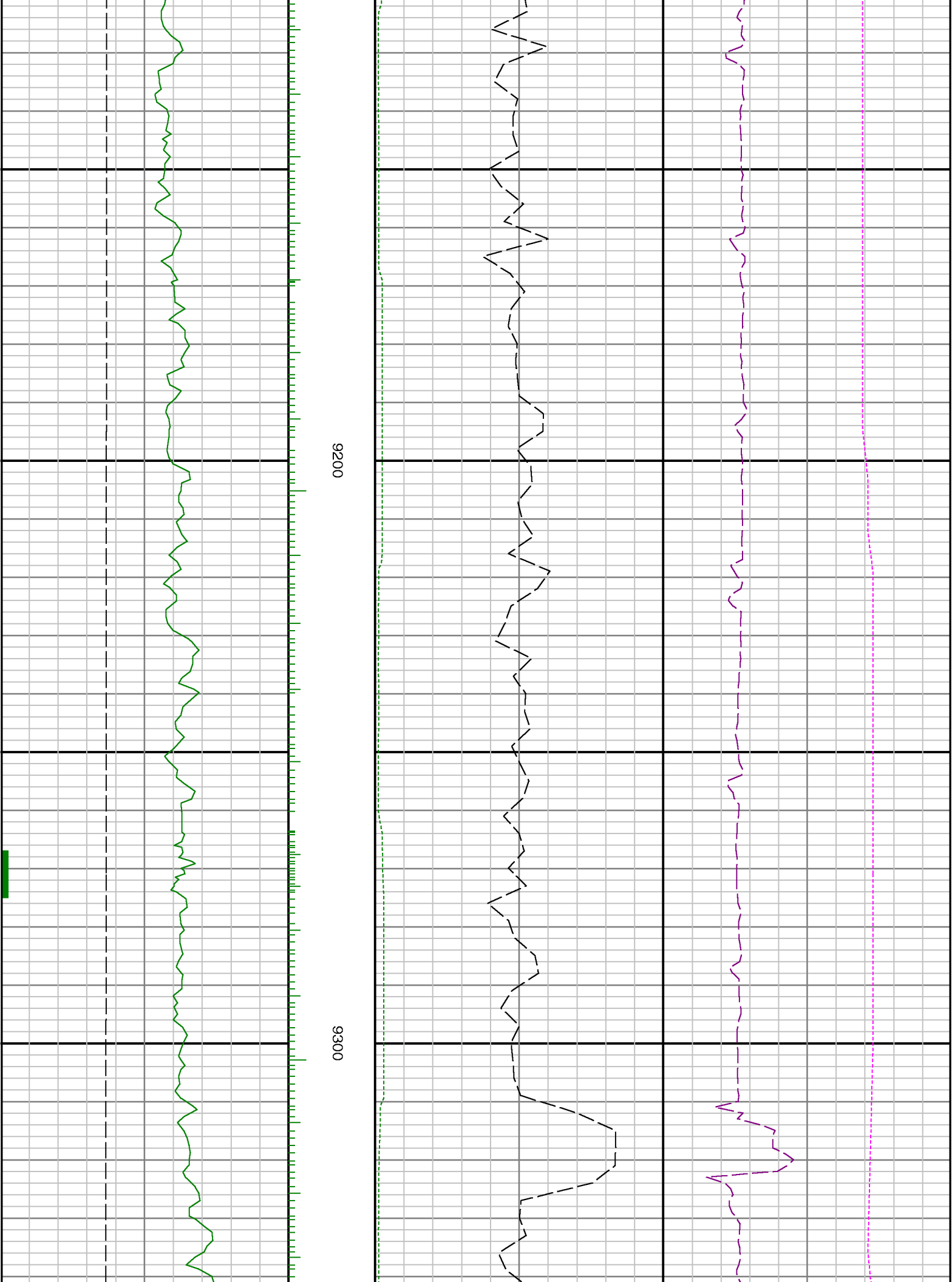
8700

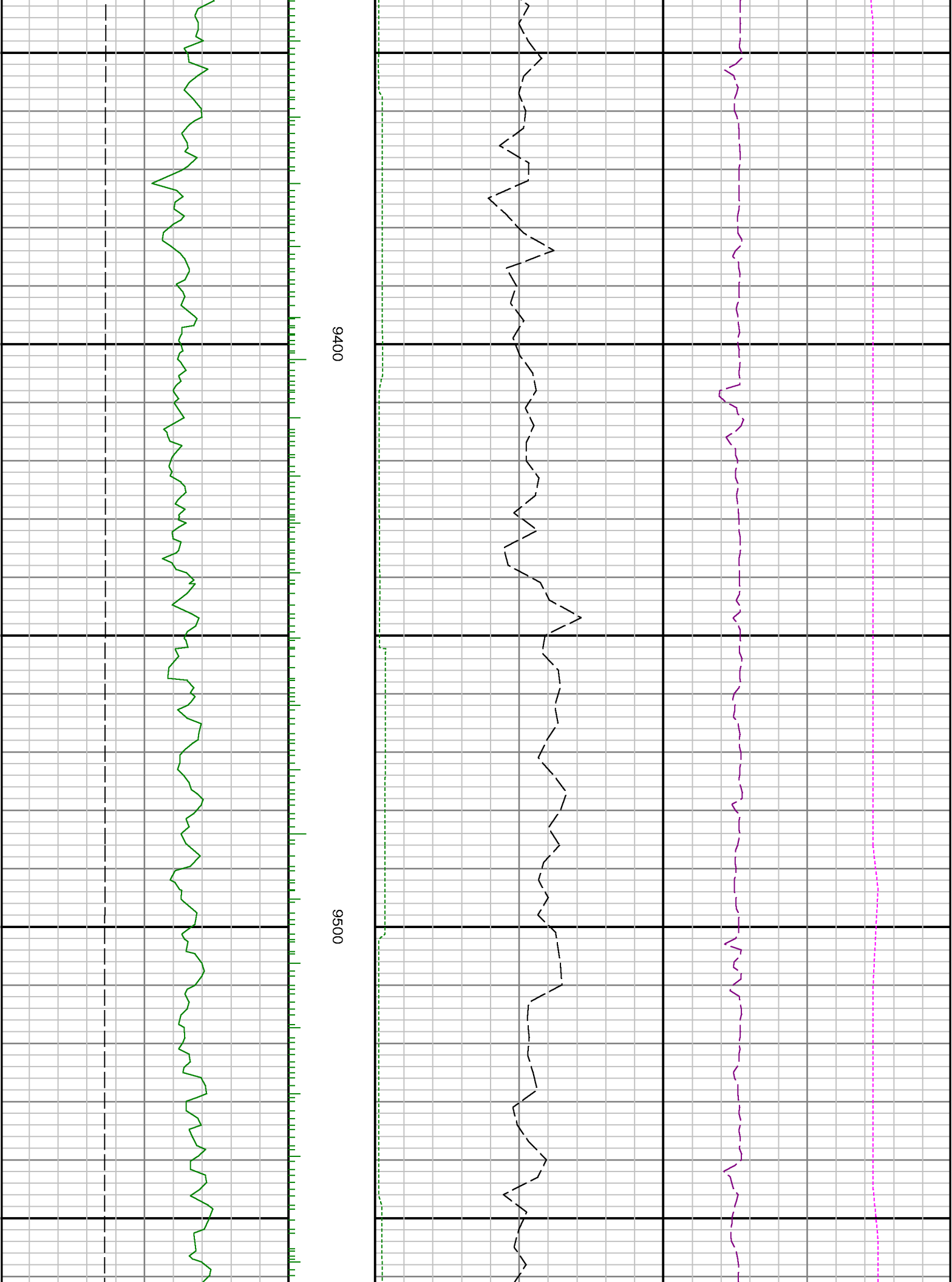
0088

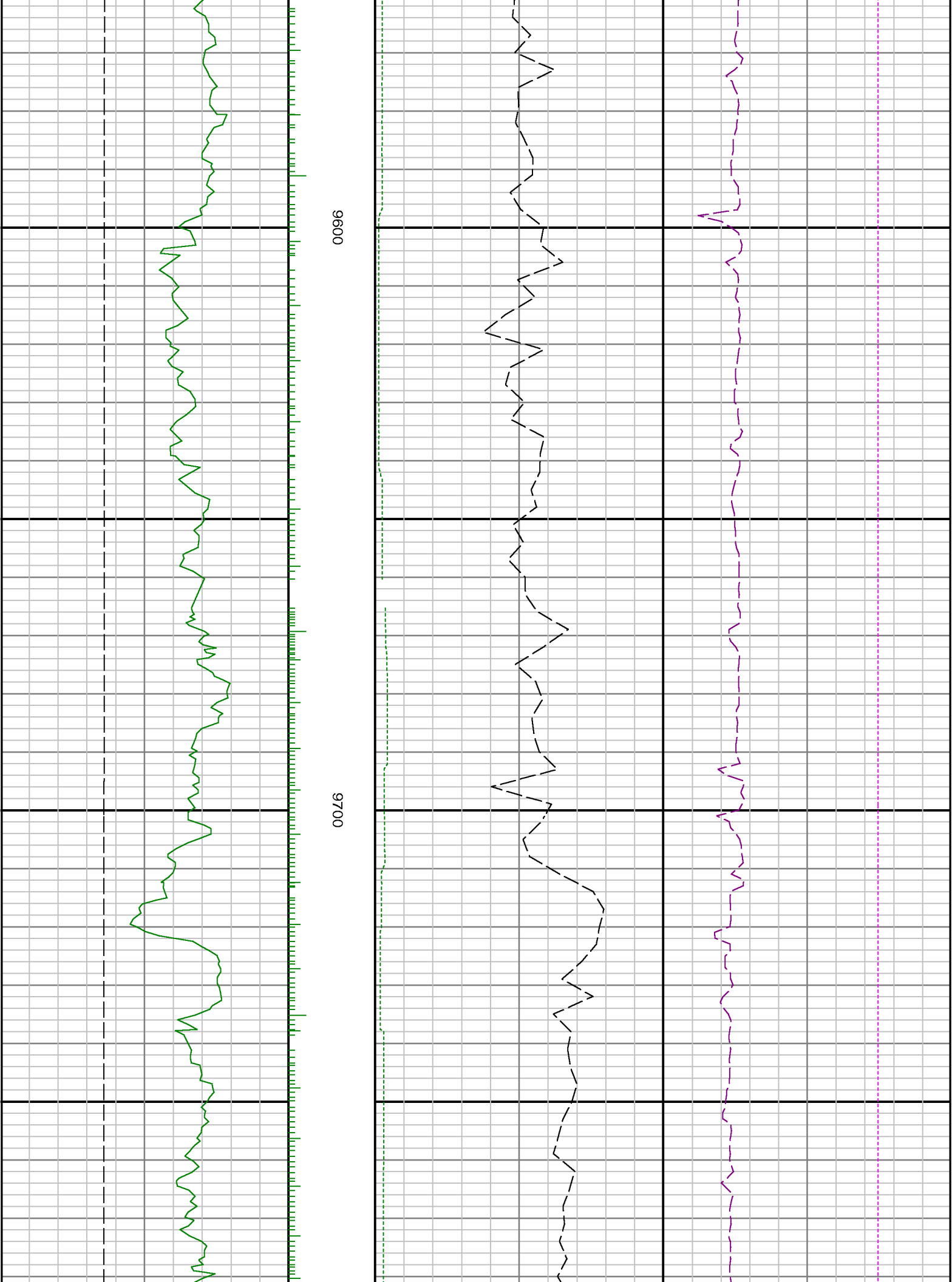
8900

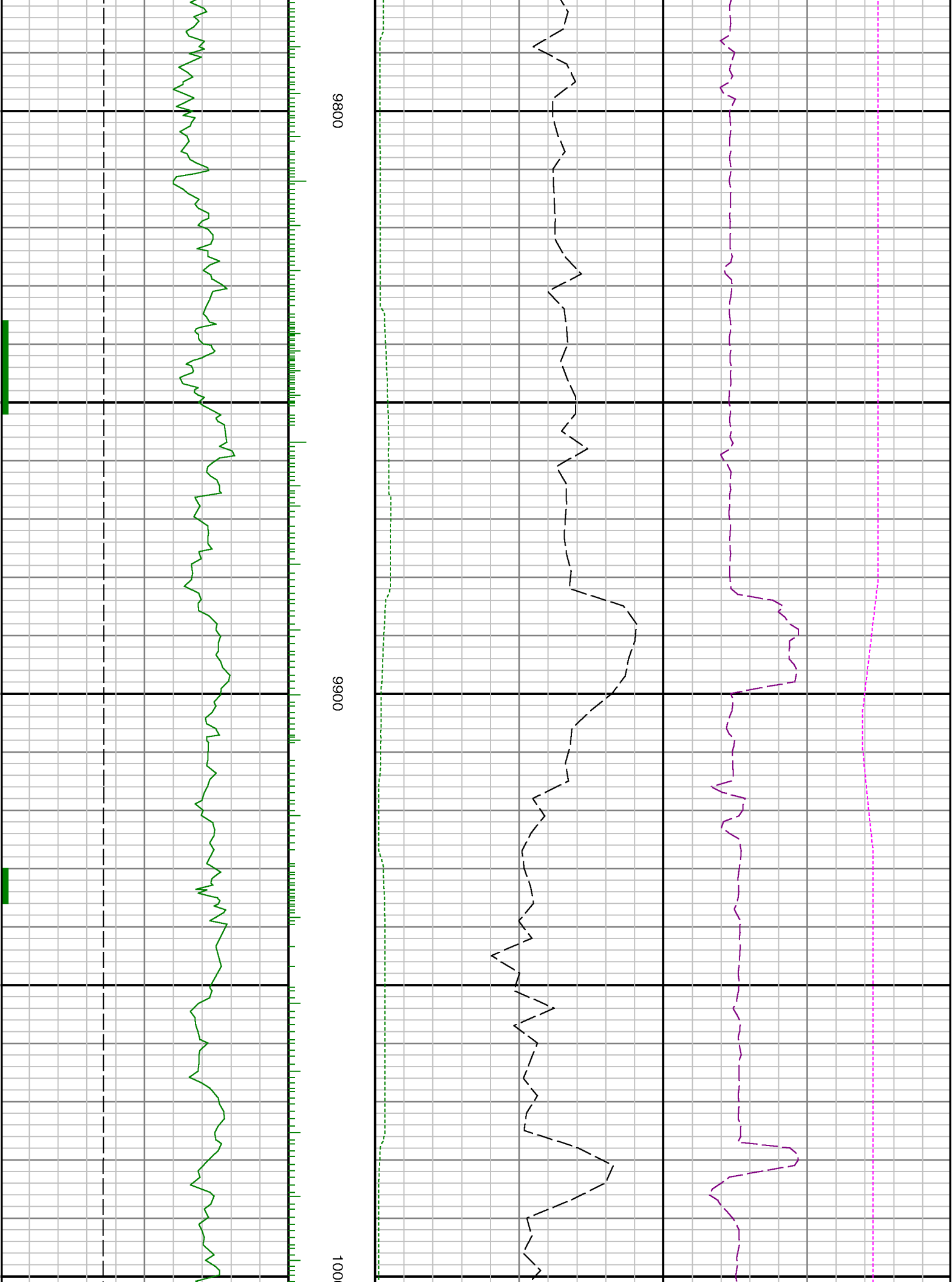


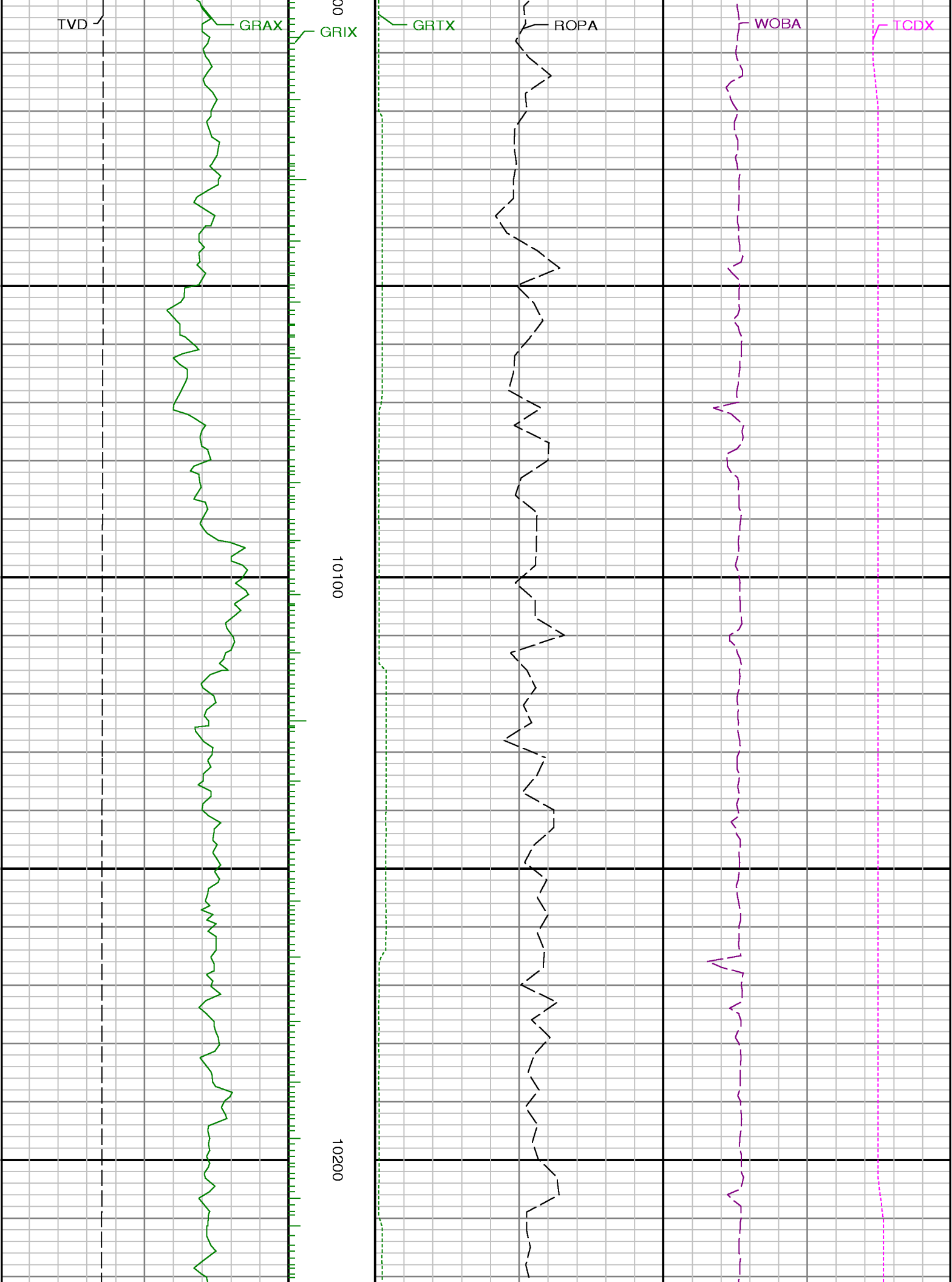








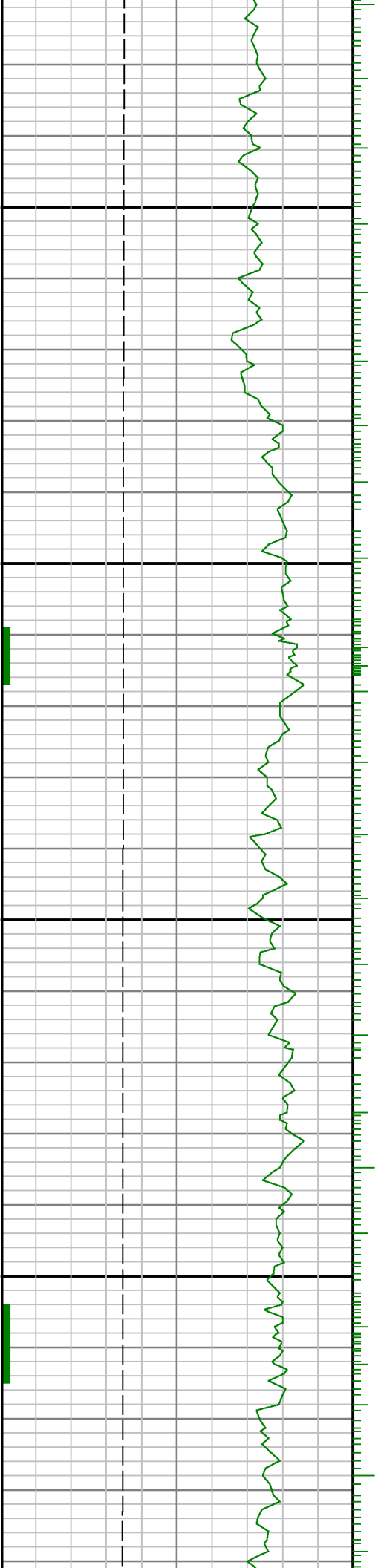


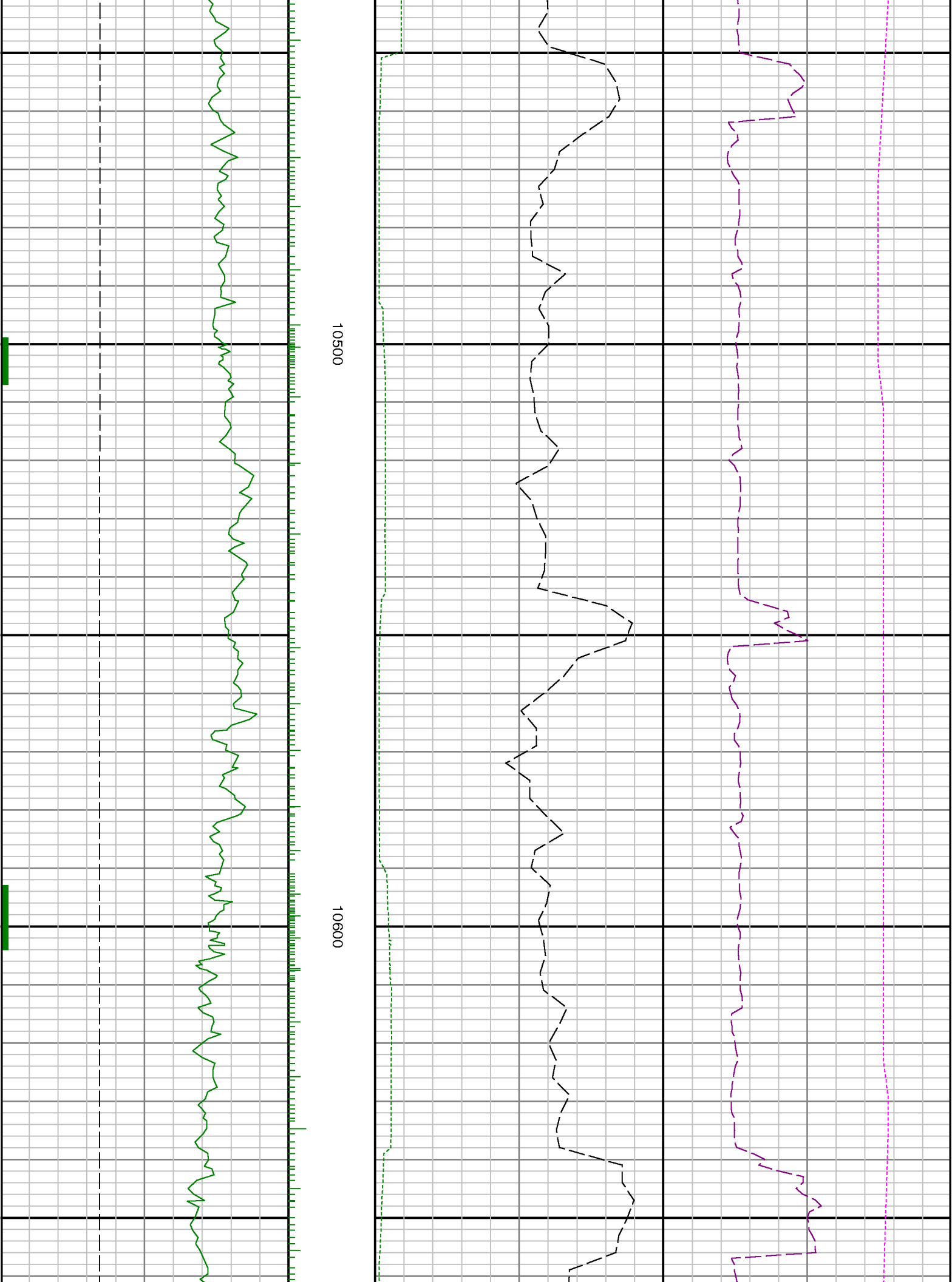


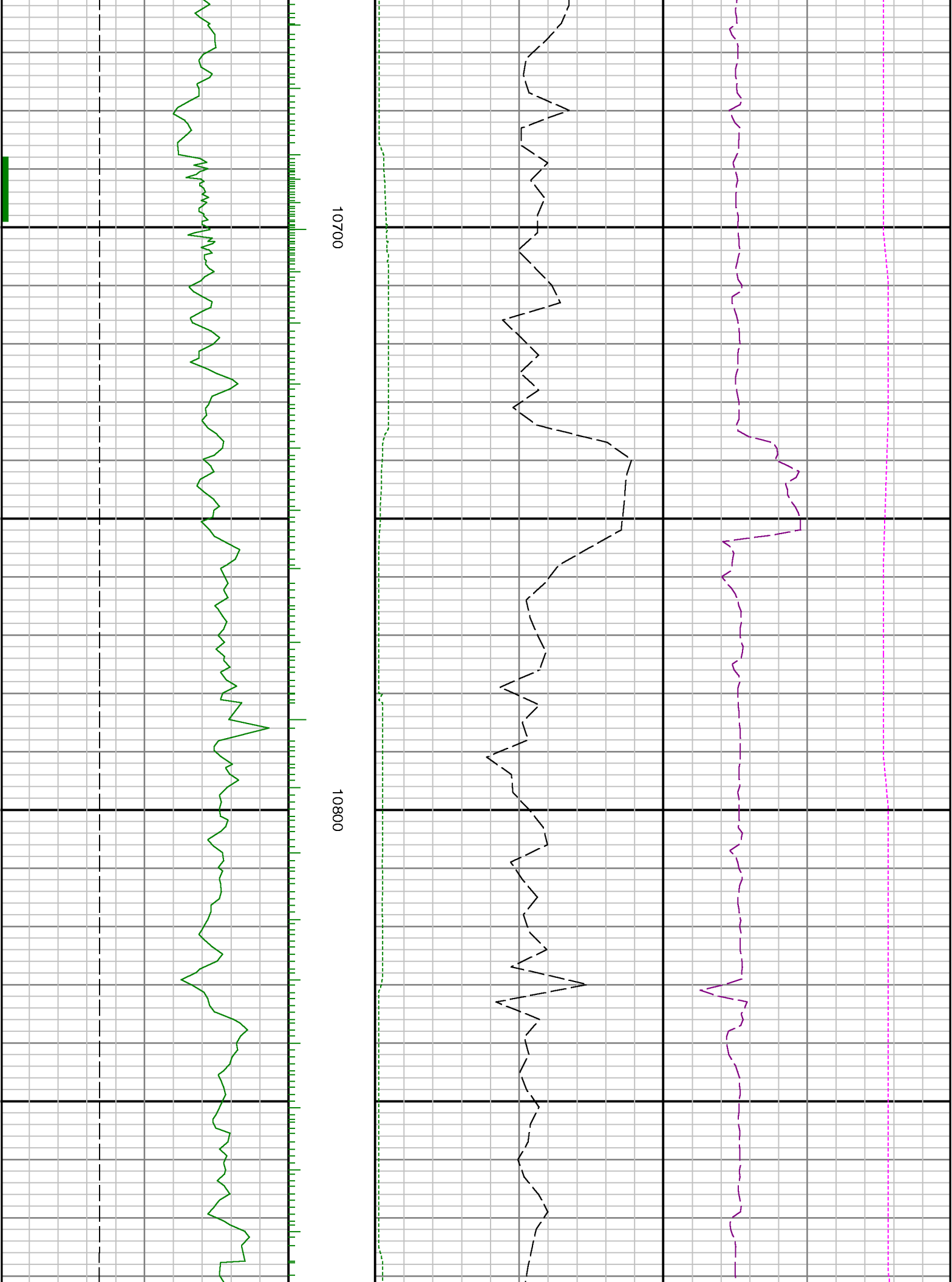


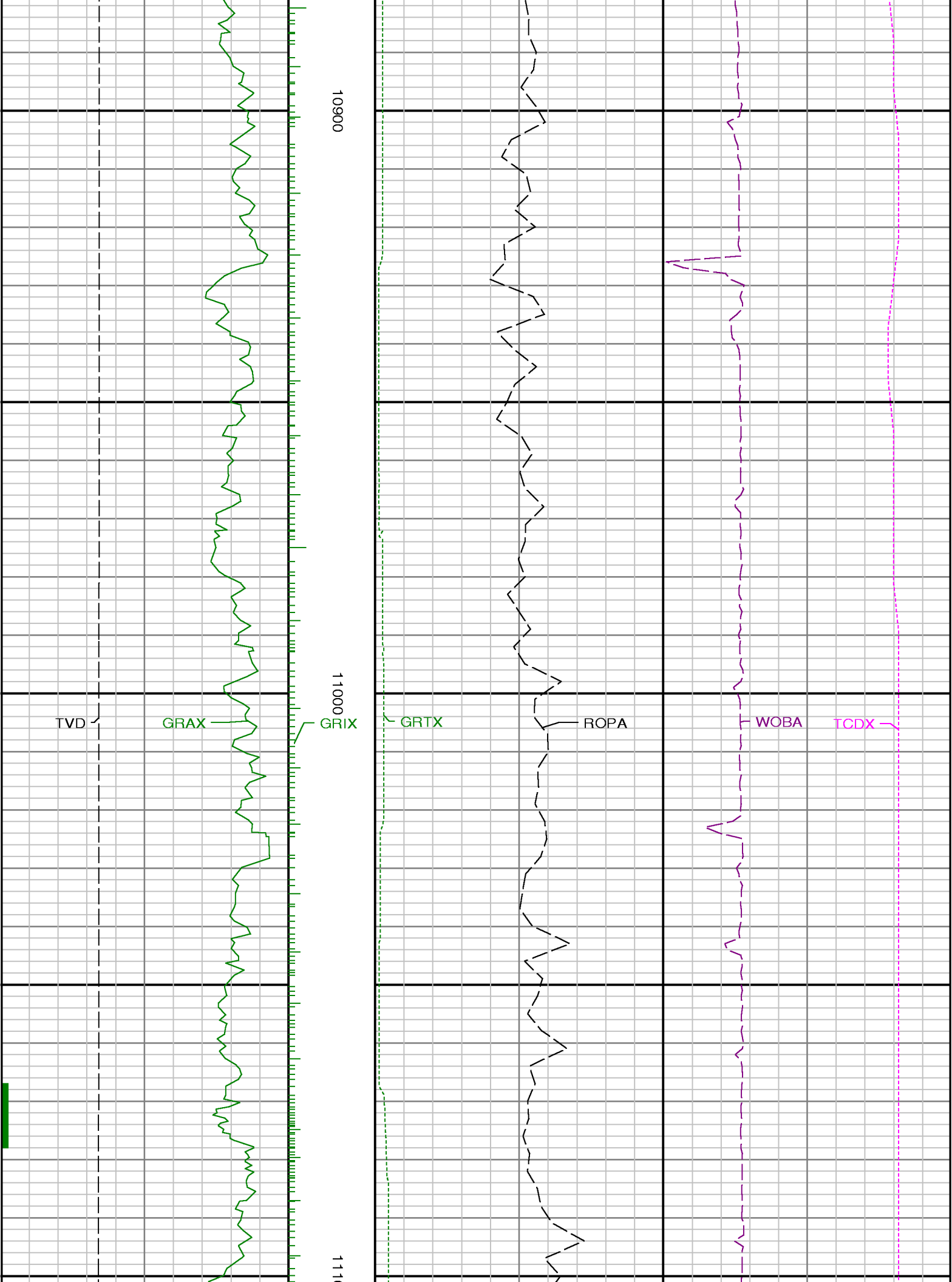
10300

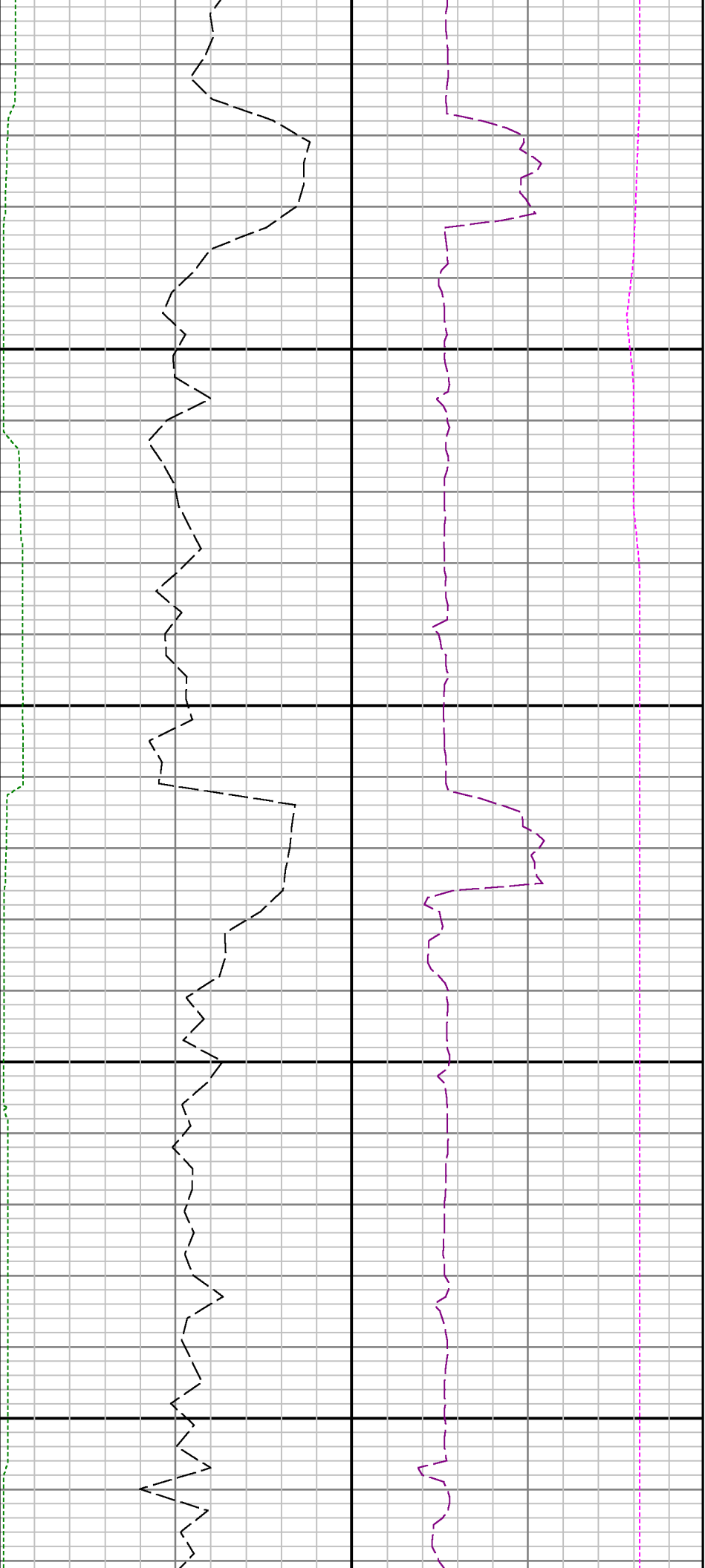
10400







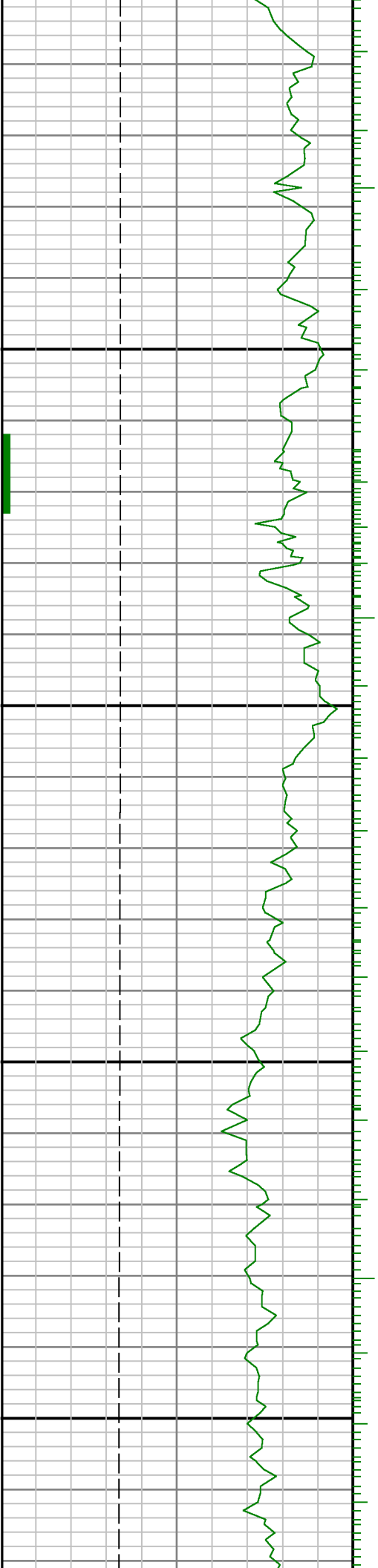


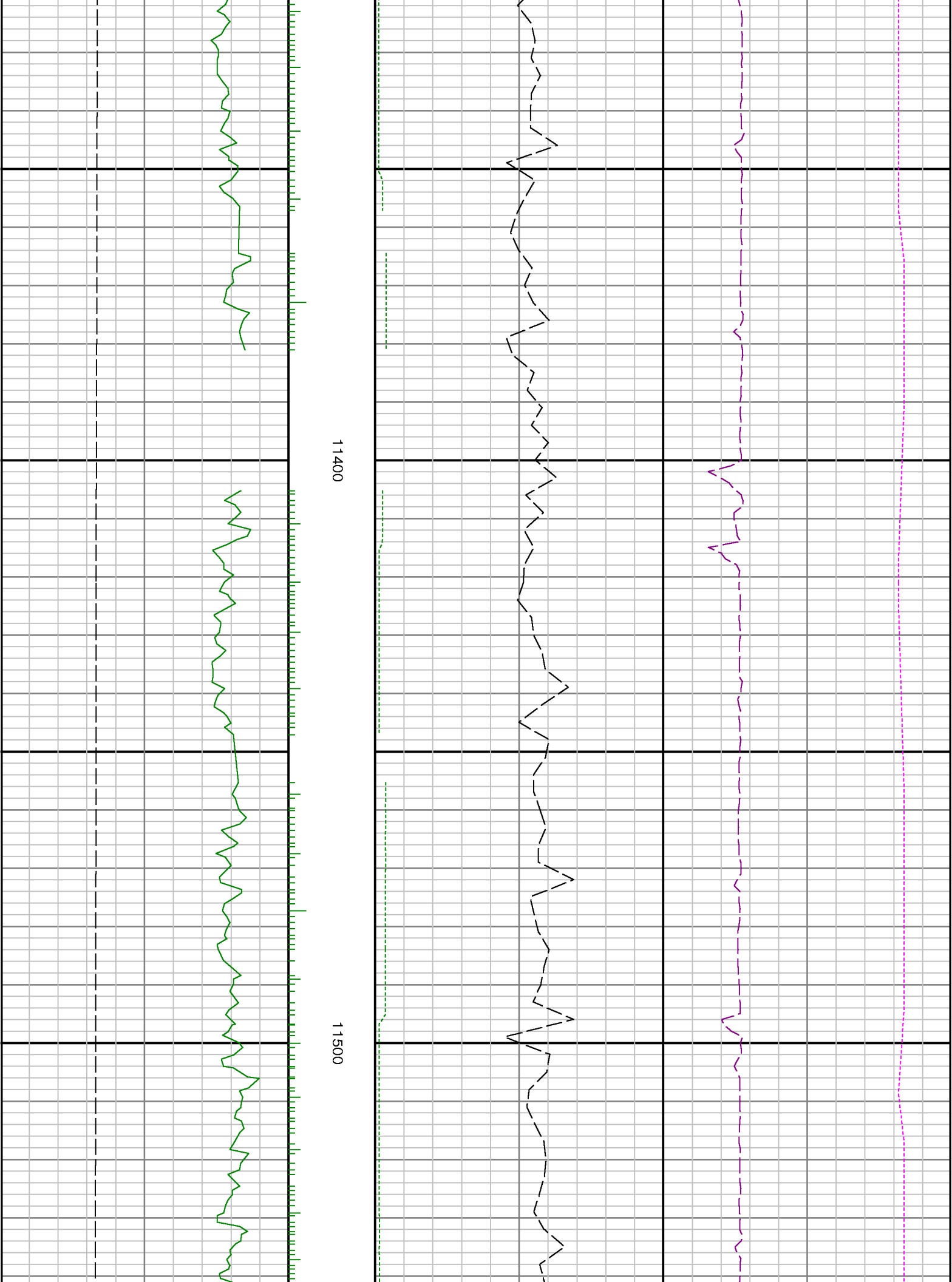


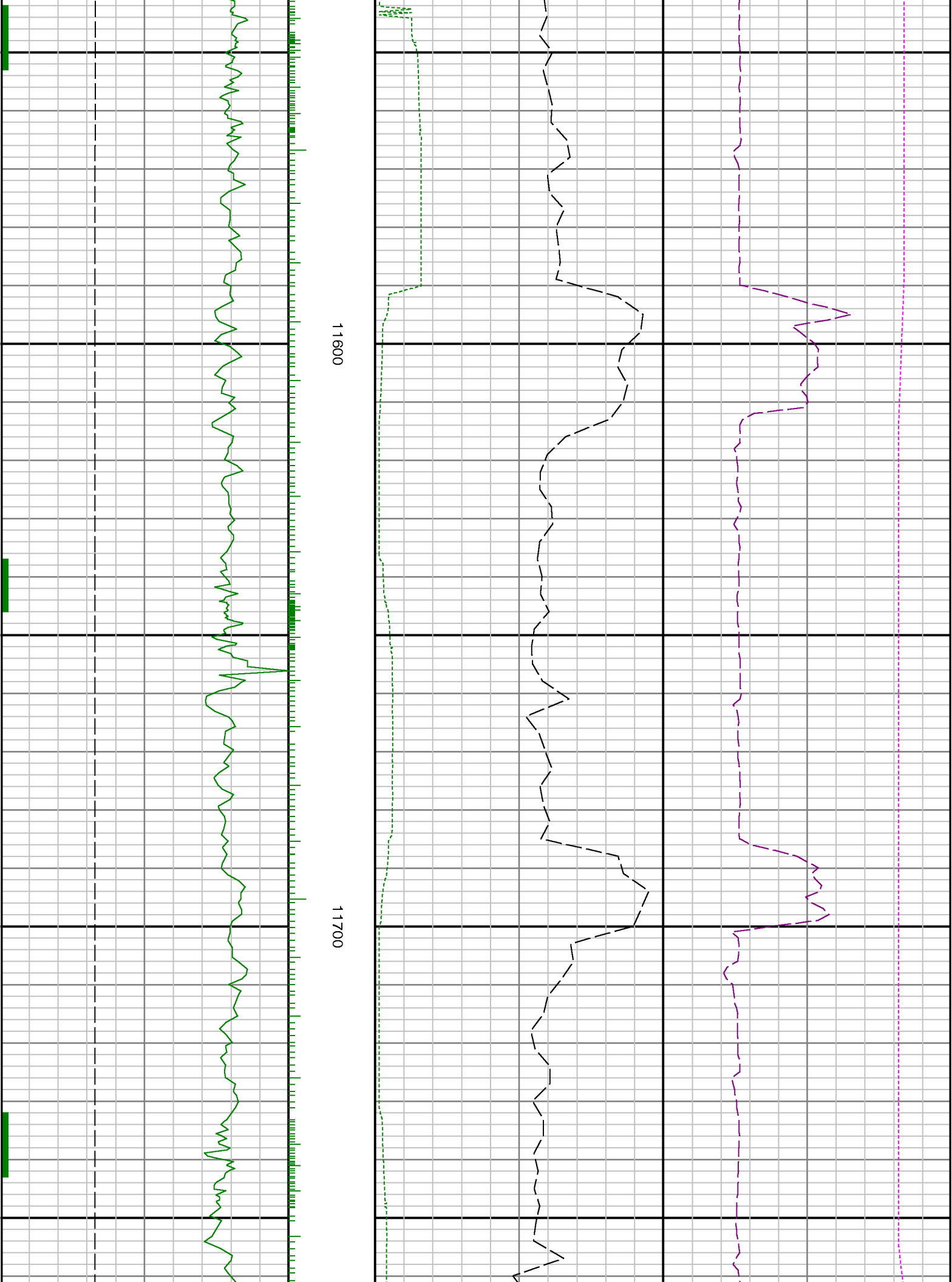
00

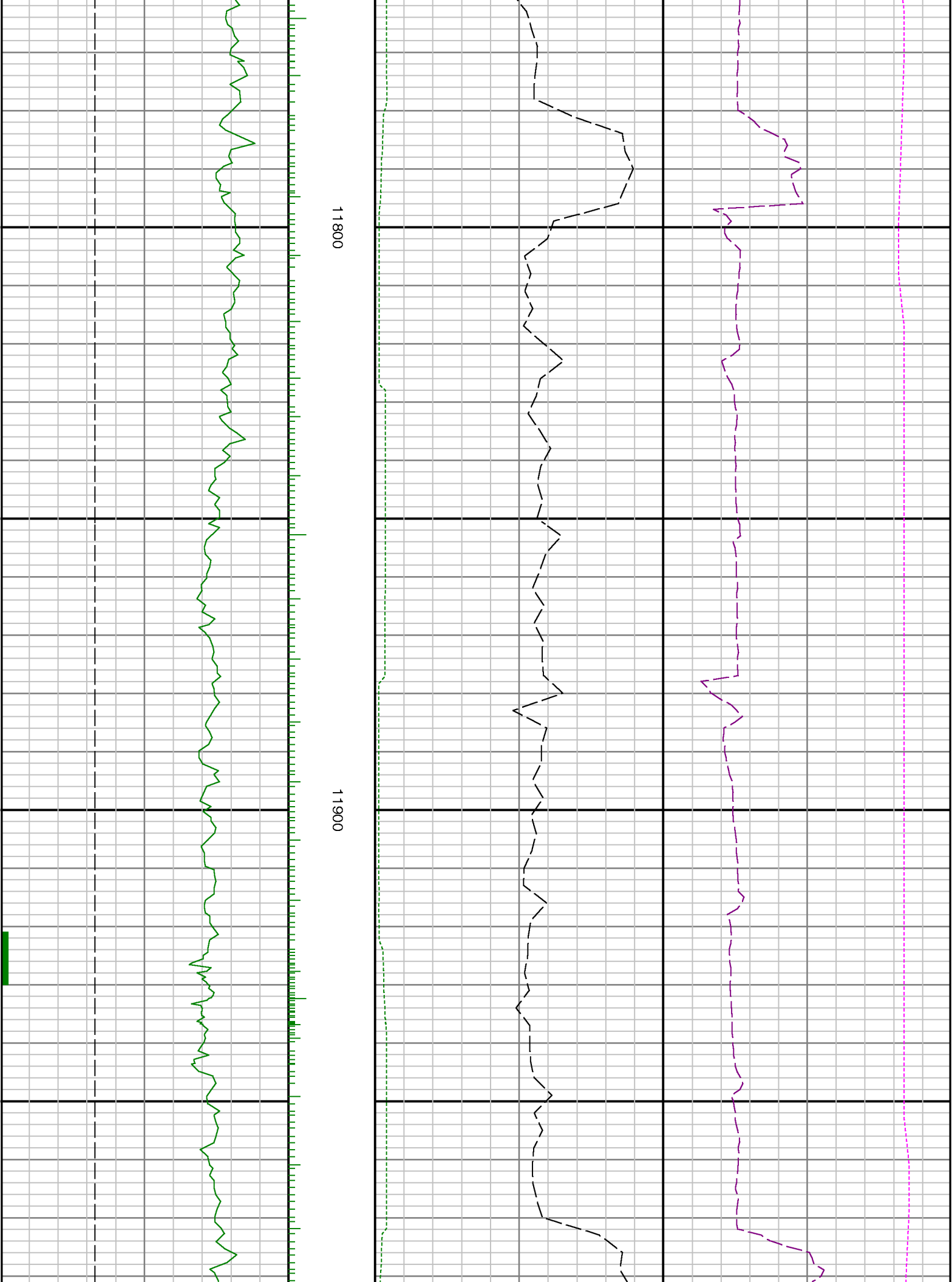
11200

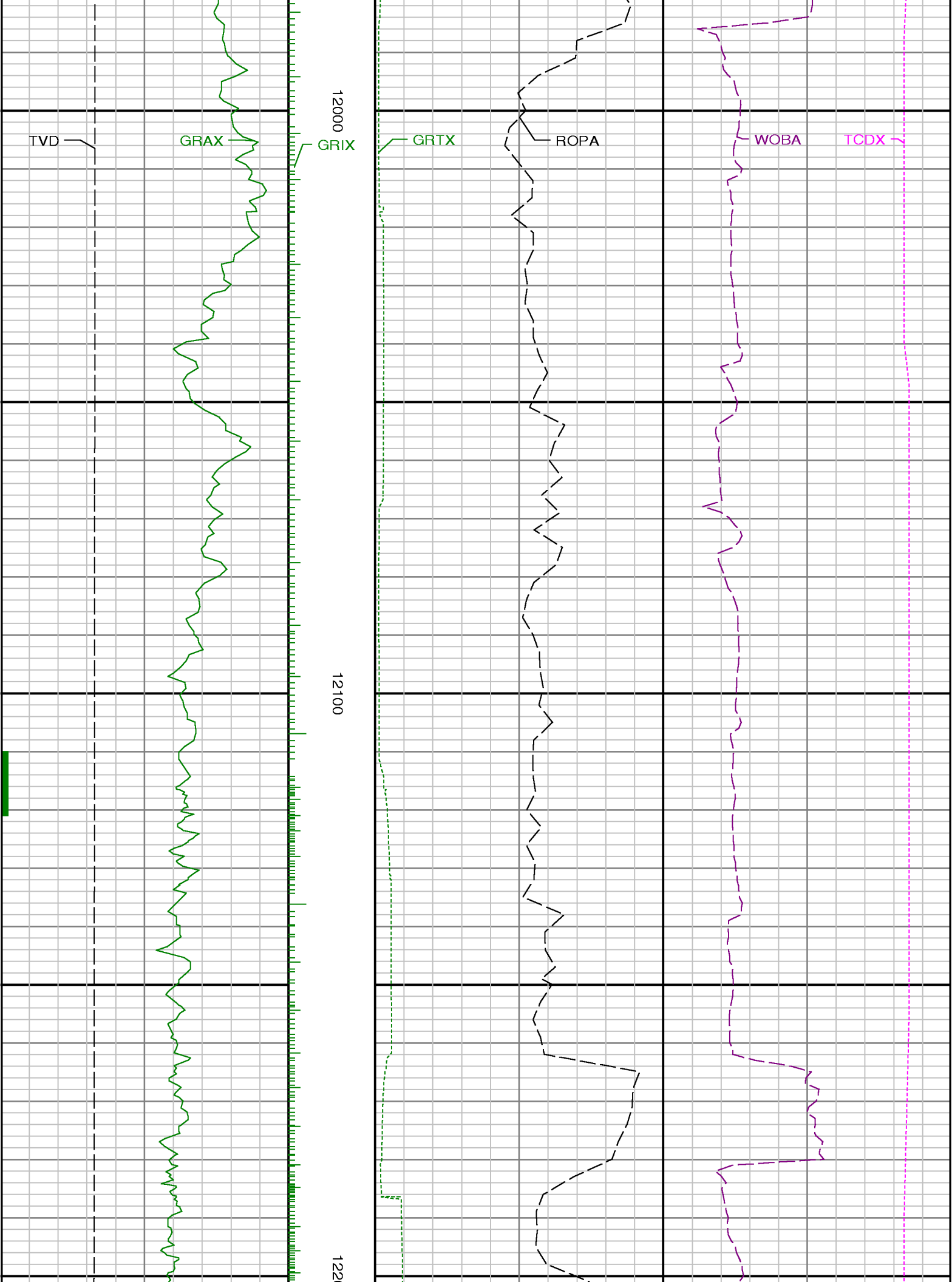
11300

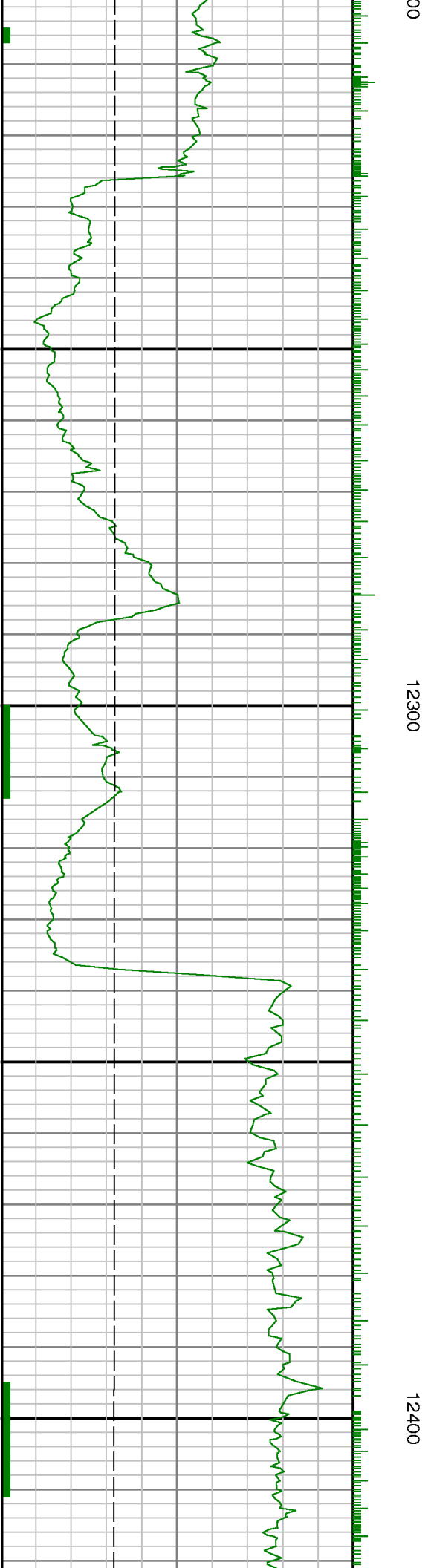


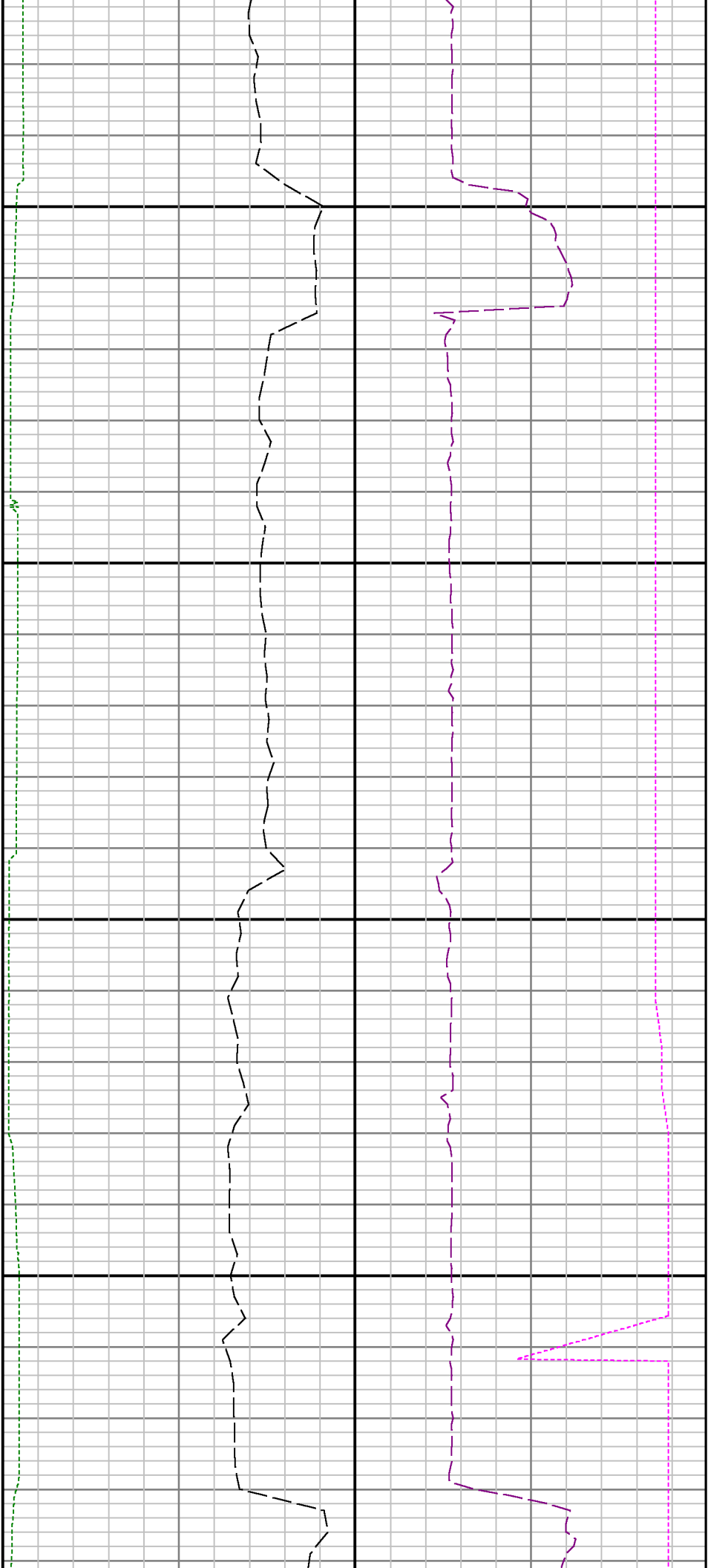












12500

12600

