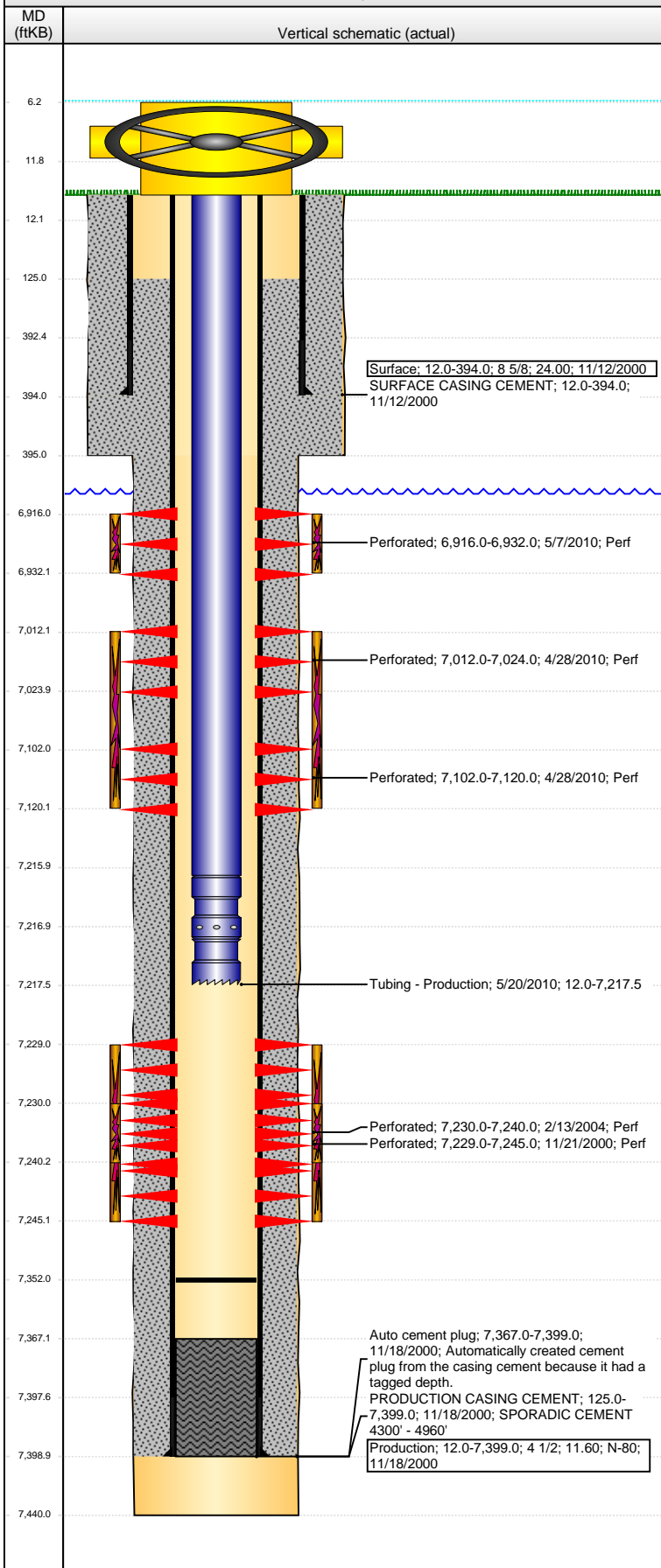


Well Name: BERNHARDT 18-32

VERTICAL - ORIGINAL HOLE, 6/15/2015 9:48:00 AM



Well Header

API 05-123-20081	Business Unit DJ BASIN	District 15	Well Config VERTICAL
Original KB Elevation (ft) 4,732.00	KB - GL / MSL (ftKB) 12.00	Spud Date 11/11/2000	P & A Date

Comment

TOC ESTIMATED, NEED TO RUN CBL TO CONFIRM CEMENT STAGE TO 125'

Directions To Well

RD 25 - RD 46, EAST 1/16 ON THE EAST SIDE OF THE RR TRACKS, S 9/10, E.1 TO TANK BATTERY, N.2 INTO

Congressional Location

Quarter 1	Quarter 2	Quarter 3	Quarter 4	Section	Township	Twnshp N...	Range	Rng E/W Dir
		NW	SW	18	4	N	66	W

Bottom Hole Location

North-South Distance (ft)	From N or S Line	East-West Distance (ft)	From E or W Line

Plug Back Total Depths

Date	Depth (ftKB)	Method	Com
11/18/2000	7,367.0	CASING TALLY	FLOAT SHOE
4/27/2010	7,352.0	TAG	
5/19/2010	7,352.0	TAG	

Wellbore Sections

Section Des	Size (in)	Act Top, MD (ftKB)	Act Btm, MD (ftKB)
SURFACE	12 1/4	12.0	395.0
PRODUCTION	7 7/8	395.0	7,440.0

Zone Statuses

Zone Name	Status Date	Status	Fluid Type	Job	Prod Method
CODELL	11/28/2000	PR	Oil	DRILLING/CO...	
CODELL	2/18/2004	PR	Oil	RE-FRAC, 2/11...	
NIOBRARA	5/9/2010	PR		RECOMPLETI...	

Casing Strings

Surface, 394.0ftKB

Casing Description	Run Date	OD (in)	Wt/Len (l...)	Grade	Top, MD (ft...)	MD (ftKB)
Surface	11/12/2000	8 5/8	24.00		12.0	394.0

Production, 7,399.0ftKB

Casing Description	Run Date	OD (in)	Wt/Len (l...)	Grade	Top, MD (ft...)	MD (ftKB)
Production	11/18/2000	4 1/2	11.60	N-80	12.0	7,399.0

Cement

Description	Top Depth (ftKB)	Bottom Depth (ftKB)
SURFACE CASING CEMENT	12.0	394.0
PRODUCTION CASING CEMENT	125.0	7,399.0

Tubing Strings

Tubing Description	Run Date	String...	ID (in)	Wt (lb/ft)	Grade	Len (ft)	Set De...
Tubing - Production	9/18/2007	2 3/8	1.995	4.70	J-55	7,192.00	
Tubing Description	Run Date	String...	ID (in)	Wt (lb/ft)	Grade	Len (ft)	Set De...
Tubing - Production	5/20/2010	2 3/8	1.995	4.60	J-55	7,205.54	

Tubing Components

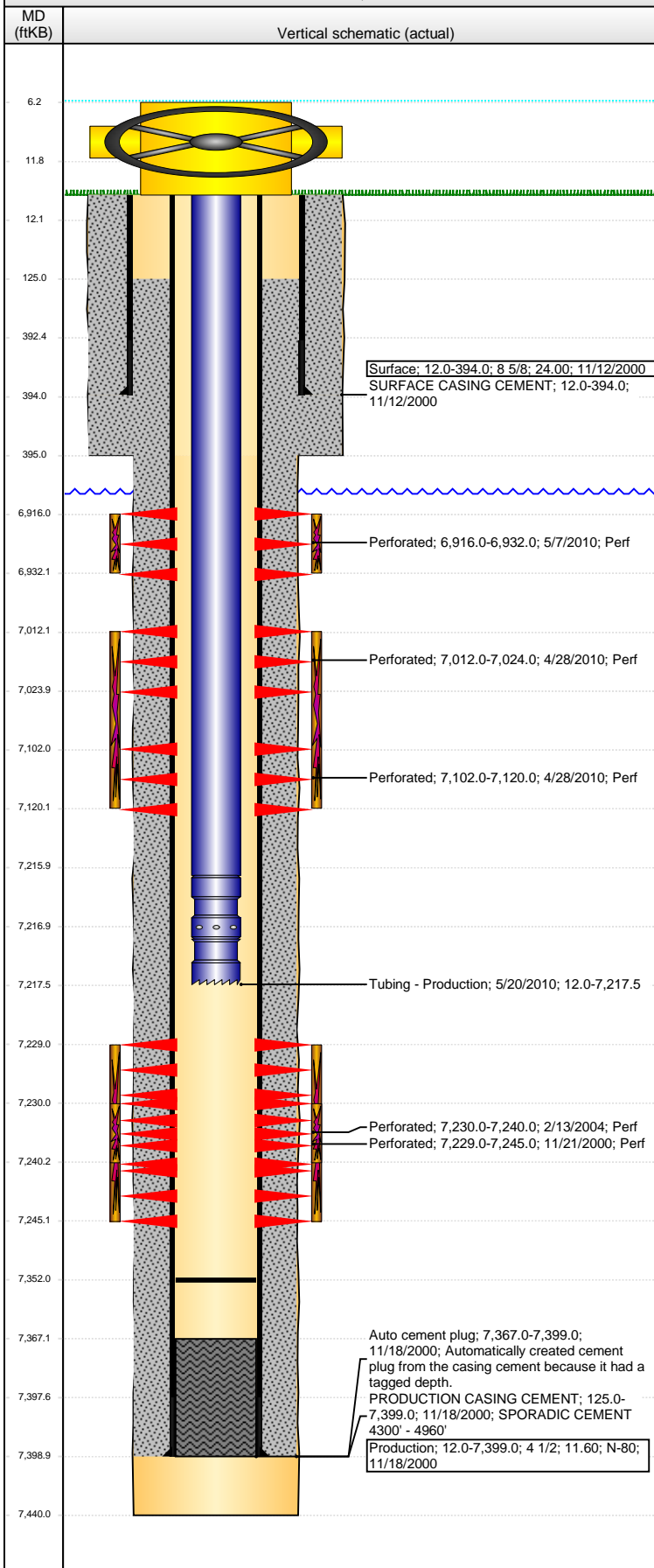
Item Des	OD (in)	Wt (lb/ft)	Grade	Jts	Len (ft)	Btm (ftKB)	Btm (TVD) (ftKB)
Tubing	2 3/8	4.60	J-55	235	7,204.04	7,216.0	
Seat Nipple	2 3/8			1	1.00	7,217.0	
Notch collar	2 3/8			1	0.50	7,217.5	

Perforation Data

Zone	Bnch/St g	Entered Shot Total	Top (ftKB)	Btm (ftKB)	Date
NIOBRARA, ORIGINAL HOLE	A	32	6,916.00	6,932.00	5/7/2010
NIOBRARA, ORIGINAL HOLE	B	24	7,012.00	7,024.00	4/28/2010
NIOBRARA, ORIGINAL HOLE	C	36	7,102.00	7,120.00	4/28/2010
CODELL, ORIGINAL HOLE		64	7,229.00	7,245.00	11/21/2000
CODELL, ORIGINAL HOLE		40	7,230.00	7,240.00	2/13/2004

Well Name: BERNHARDT 18-32

VERTICAL - ORIGINAL HOLE, 6/15/2015 9:48:03 AM



Stimulations & Treatments

Date	Zone	Primary Job Type
11/22/2000	CODELL, ORIGINAL HOLE	
Technical Result	Tech Result Details	Tech Result Note
Comment		
Date	Zone	Primary Job Type
2/16/2004	CODELL, ORIGINAL HOLE	
Technical Result	Tech Result Details	Tech Result Note
Comment		
Not mapped: stimulation.user2 = 101,640 gal 26# and 24# Vistar gel		
Not mapped: stimulation.user1 = 260,480# 20/40 sd		
Refracted Codell w/ 260,480# 20/40 sd, using 101,640 gal 26# and 24# Vistar gel		
Date	Zone	Primary Job Type
5/7/2010	NIOBRARA, ORIGINAL HOLE	RECOMPLETION
Technical Result	Tech Result Details	Tech Result Note
Success	According to Plan	
Comment		
(NIOBRARA BC): JOB WENT WELL WITH NO ISSUES TO REPORT.		
Date	Zone	Primary Job Type
5/7/2010	NIOBRARA, ORIGINAL HOLE	RECOMPLETION
Technical Result	Tech Result Details	Tech Result Note
Success	According to Plan	
Comment		
(NIOBRARA A): EXTENDED X-LINK PAD STAGE BECAUSE PH TOOK A LONG TIME TO RISE. ONCE PH WAS UP TO A 10.0 WE STARTED SAND. JOB WENT WELL WITH NO OTHER ISSUES TO REPORT.		

Other In Hole

Run Date	Des	OD (in)	Top (ftKB)	Btm (ftKB)

Logs

Date	Type	Top, MD (ftKB)	Btm, MD (ftKB)
11/17/2000	COMPENSATED DENSITY	4,600.0	7,420.0
11/17/2000	INDUCTION	394.0	7,416.0
11/20/2000	CEMENT BOND	4,284.0	7,362.0
9/18/2007	CBL/CCL/GR	6,200.0	7,010.0
4/28/2010	CBL/CCL/GR/VDL	4,950.0	7,348.0