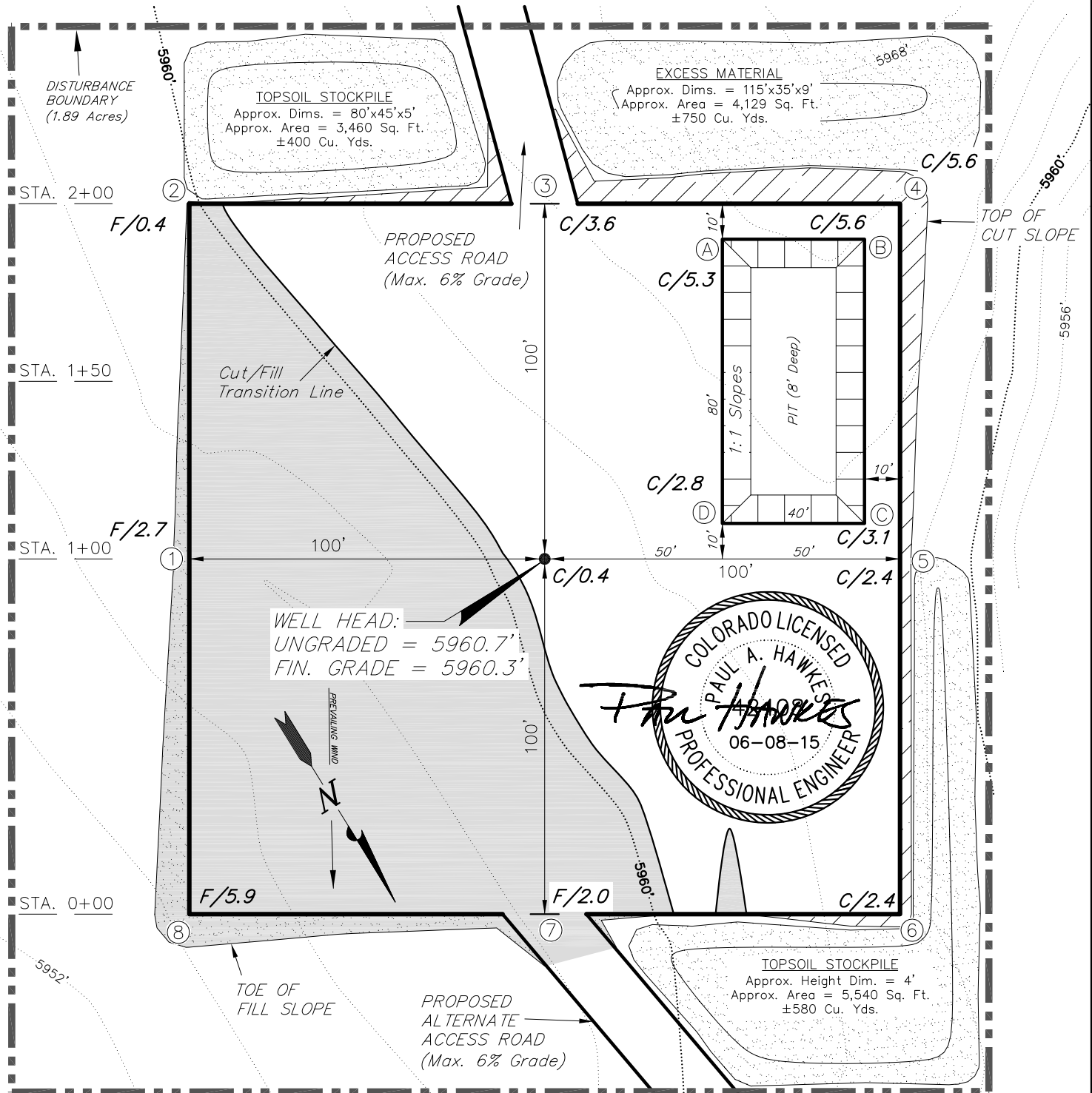


AUS-TEX EXPLORATION INC

LOCATION LAYOUT PATHFINDER C18 #2

Pad Location: NWNE SECTION 18, T20S, R69W, 6th P.M.



NOTE:

The topsoil & excess material areas are calculated as being mounds containing 1,730 cubic yards of dirt (a 10% fluff factor is included). The mound areas are calculated with push slopes of 1.5:1 & fall slopes of 1.5:1.

REFERENCE POINTS

150' NORTHEASTERLY - 5956.7'
200' NORTHEASTERLY - 5957.3'
150' SOUTHEASTERLY - 5955.0'
200' SOUTHEASTERLY - 5953.6'

SURVEYED BY: D.P. DATE SURVEYED: 06-05-15
DRAWN BY: F.T.M. DATE DRAWN: 06-08-15
SCALE: 1" = 40' REVISED:

Tri State
Land Surveying, Inc.
180 NORTH VERNAL AVE. VERNAL, UTAH 84078
(435) 781-2501

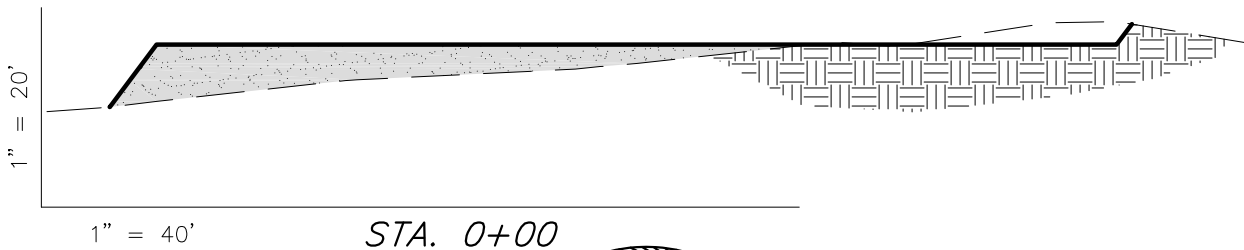
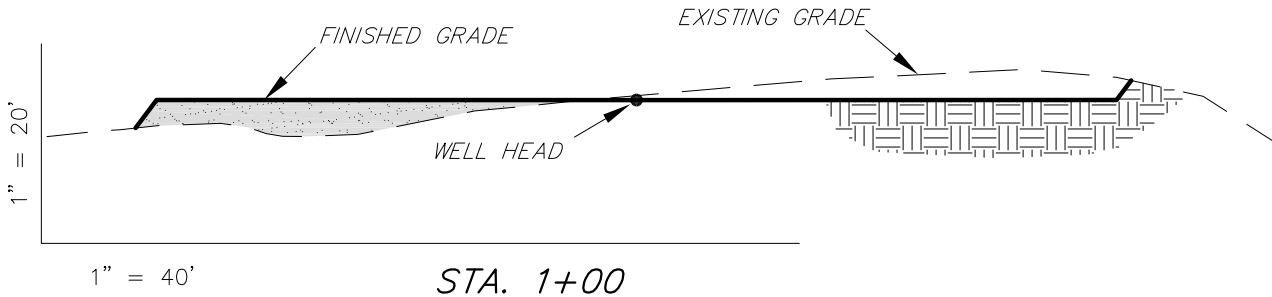
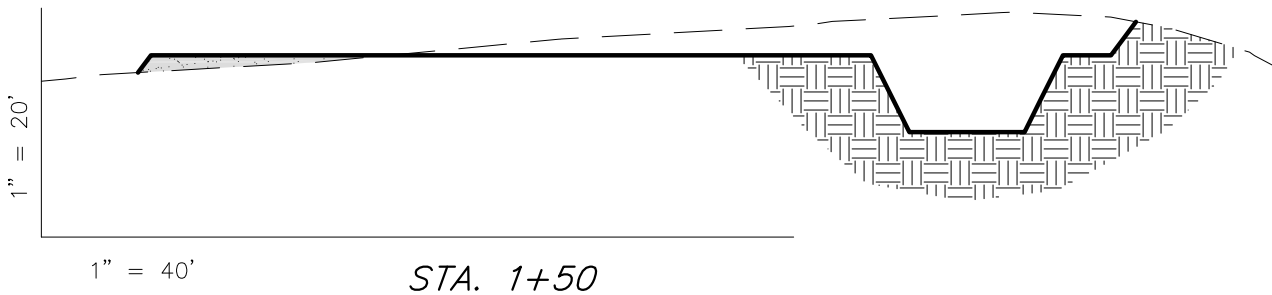
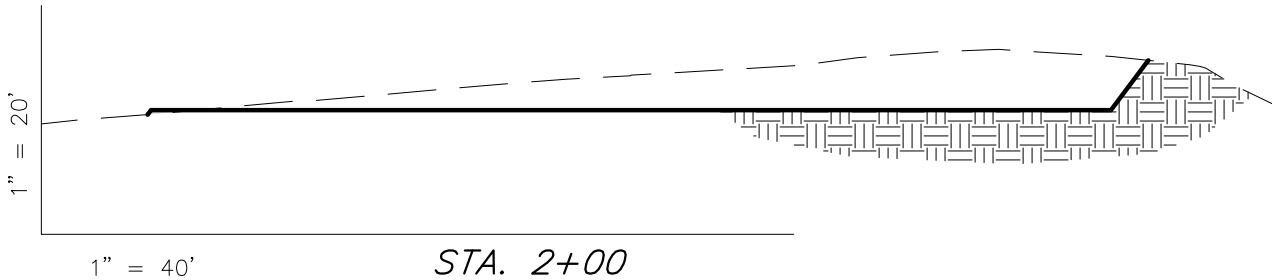
SHEET
3

AUS-TEX EXPLORATION INC

CROSS SECTIONS

PATHFINDER C18 #2

Pad Location: NWNE SECTION 18, T20S, R69W, 6th P.M.



NOTE:
UNLESS OTHERWISE
NOTED ALL CUT/FILL
SLOPES ARE AT 1.5:1



ESTIMATED EARTHWORK QUANTITIES (No Shrink or swell adjustments have been used) (Expressed in Cubic Yards)

ITEM	CUT	FILL	6" TOPSOIL	EXCESS
PAD	1,770	1,770	Topsoil is not included in Pad Cut	0
PIT	680	0		680
TOTALS	2,450	1,770	890	680

SURVEYED BY: D.P. DATE SURVEYED: 06-05-15
DRAWN BY: F.T.M. DATE DRAWN: 06-08-15
SCALE: 1" = 40' REVISED:

Tri State
Land Surveying, Inc.
180 NORTH VERNAL AVE. VERNAL, UTAH 84078
(435) 781-2501

SHEET
4

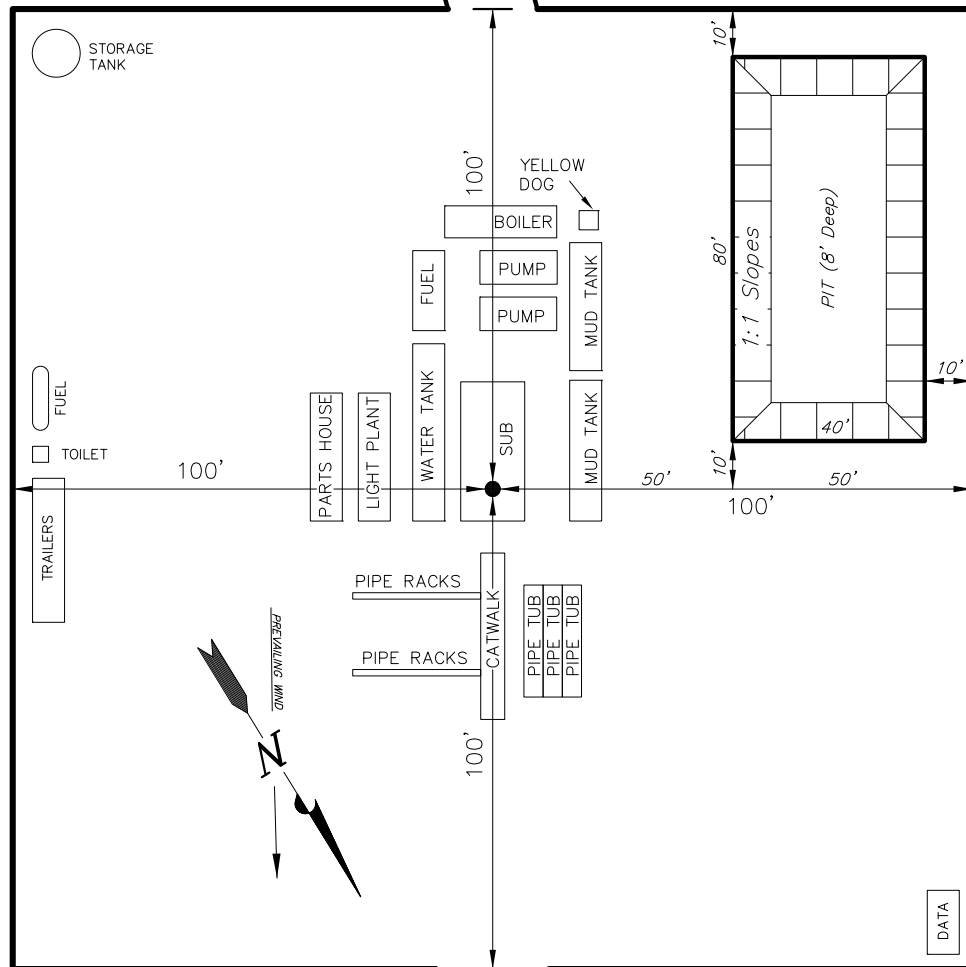
AUS-TEX EXPLORATION INC

TYPICAL RIG LAYOUT

PATHFINDER C18 #2

Pad Location: NWNE SECTION 18, T20S, R69W, 6th P.M.

PROPOSED ACCESS
ROAD (Max. 6% Grade)



PROPOSED
ALTERNATE
ACCESS ROAD
(Max. 6% Grade)

SURVEYED BY:	D.P.	DATE SURVEYED:	06-05-15
DRAWN BY:	F.T.M.	DATE DRAWN:	06-08-15
SCALE:	1" = 40'	REVISED:	

Tri State
Land Surveying, Inc.
180 NORTH VERNAL AVE. VERNAL, UTAH 84078
(435) 781-2501

SHEET
5

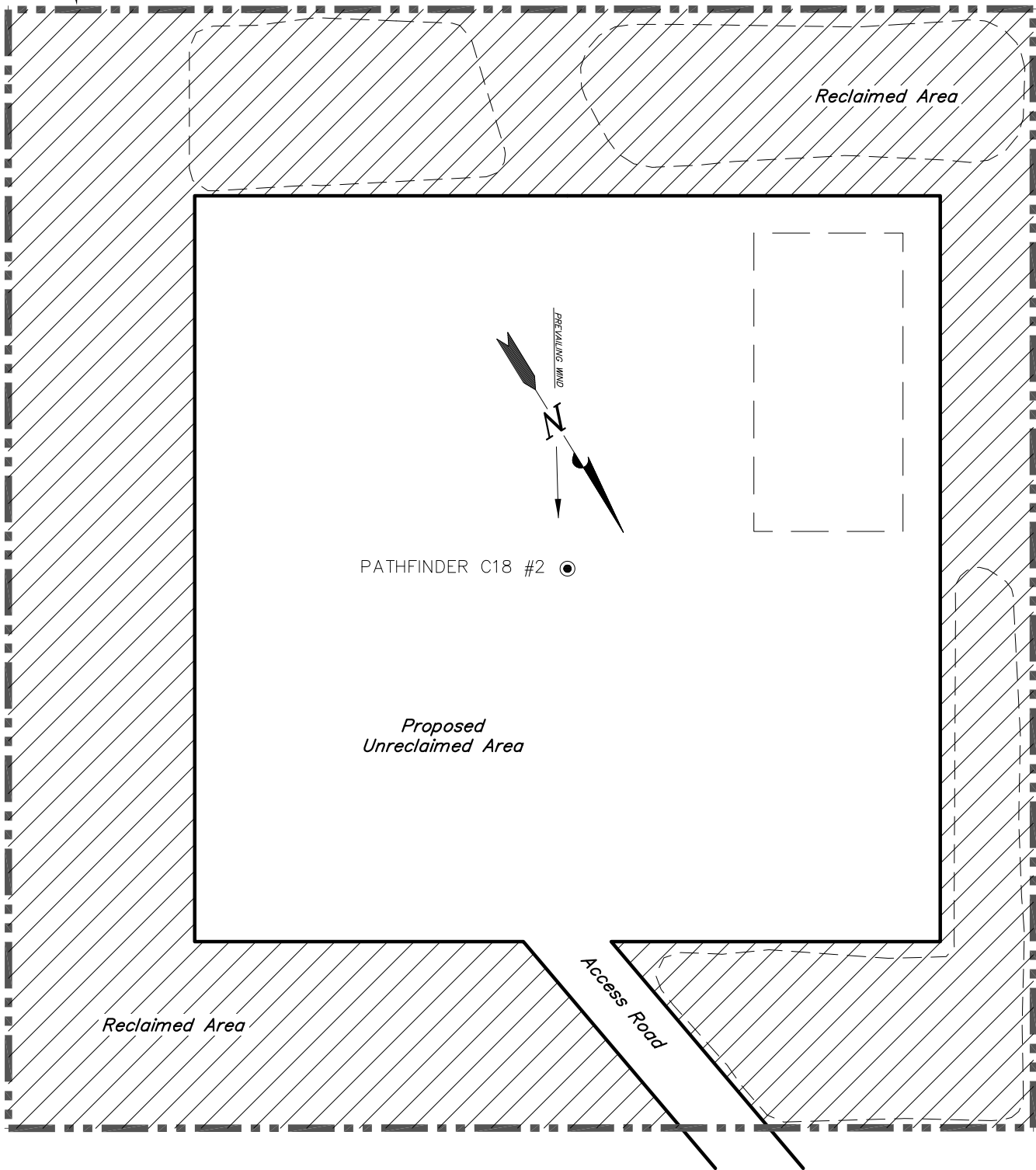
AUS-TEX EXPLORATION INC

RECLAMATION LAYOUT

PATHFINDER C18 #2

Pad Location: NWNE SECTION 18, T20S, R69W, 6th P.M.

DISTURBANCE
BOUNDARY
(1.89 Acres)



Notes:

1. Reclaimed Area to Include Seeding of Approved Vegetation and Sufficient Storm Water Management System.
2. Actual Equipment Layout and Reclaimed Pad Surface Area May Change due to Production Requirements or Site Conditions.

DISTURBED AREA:

TOTAL DISTURBED AREA = ± 1.89 ACRES
TOTAL RECLAIMED AREA = ± 0.94 ACRES
UNRECLAIMED AREA = ± 0.95 ACRES

SURVEYED BY:	D.P.	DATE SURVEYED:	06-05-15
DRAWN BY:	F.T.M.	DATE DRAWN:	06-08-15
SCALE:	1" = 40'	REVISED:	

Tri State
Land Surveying, Inc.
(435) 781-2501
180 NORTH VERNAL AVE. VERNAL, UTAH 84078

SHEET
6a

AUS-TEX EXPLORATION INC

RECLAMATION LAYOUT

PATHFINDER C18 #2

Pad Location: NWNE SECTION 18, T20S, R69W, 6th P.M.

DISTURBANCE
BOUNDARY
(1.89 Acres)

Access
Road

Reclaimed Area

PRELIMINARY WIND

N

PATHFINDER C18 #2 ●

Proposed
Unreclaimed Area

Reclaimed Area

Notes:

1. Reclaimed Area to Include Seeding of Approved Vegetation and Sufficient Storm Water Management System.
2. Actual Equipment Layout and Reclaimed Pad Surface Area May Change due to Production Requirements or Site Conditions.

DISTURBED AREA:

TOTAL DISTURBED AREA = ±1.89 ACRES
TOTAL RECLAIMED AREA = ±0.95 ACRES
UNRECLAIMED AREA = ±0.94 ACRES

SURVEYED BY:	D.P.	DATE SURVEYED:	06-05-15
DRAWN BY:	F.T.M.	DATE DRAWN:	06-08-15
SCALE:	1" = 40'	REVISED:	

Tri State
Land Surveying, Inc.
180 NORTH VERNAL AVE. VERNAL, UTAH 84078
(435) 781-2501

SHEET
6b