

# HALLIBURTON

iCem<sup>®</sup> Service

## **CATAMOUNT ENERGY PARTNERS LLC-EBUS**

**For: DALE**

Date: Thursday, April 09, 2015

**ELSA 34-6-19 # 1**

ELSA

CATAMOUNT, ELSA 34-6-19 # 1

Job Date: Thursday, April 09, 2015

Sincerely,

**BRANDON WOOD**

## 1.0 Real-Time Job Summary

### 1.1 Job Event Log

Type	Seq. No.	Activity	Graph Label	Date	Time	Source	PS Pump Press (psi)	DH Density (ppg)	PS Pump Rate (bbl/min)	PS Pmp Stg Tot (bbl)	Comments
Event	1	Start Job	Start Job	4/9/2015	21:27:00	COM5	77.00	8.30	1.80	1.4	
Event	2	Test Lines	Test Lines	4/9/2015	21:29:11	USER	3795.00	8.41	0.00	0.0	PRESSURE TEST GOOD TO 2800 PSI
Event	3	Pump Spacer 1	Pump Spacer 1	4/9/2015	21:32:08	USER	16.00	8.31	0.90	0.0	PUMP 5 BBLS H2O SPACER
Event	4	Pump Spacer 2	Pump Spacer 2	4/9/2015	21:35:41	COM5	267.00	8.38	1.50	0.0	PUMP 10 BBLS CHEM WASH SPACER
Event	5	Pump Spacer 1	Pump Spacer 1	4/9/2015	21:42:19	COM5	360.00	8.31	2.30	10.1	PUMP 5 BBLS H2O
Event	6	Pump Cement	Pump Cement	4/9/2015	21:44:32	COM5	405.00	8.37	2.50	0.0	PUMP 11.6 BBLS SCAVENGER @ 11.3 #, 20 SKS, 3.25 YLD, 19.81 GAL/SK,
Event	7	Pump Lead Cement	Pump Lead Cement	4/9/2015	21:47:40	COM5	452.00	11.24	4.00	11.8	PUMP 31.6 BBLS 1ST LEAD CEMENT @ 12.3 #, 73 SKS, 2.43 YLD, 13.69 GAL/SK,
Event	8	Pump Lead Cement	Pump Lead Cement	4/9/2015	21:59:14	COM5	123.00	12.24	4.00	46.4	PUMP 47.6 BBLS 2ND LEAD CEMENT @ 12.3 #, 110 SKS, 2.43 YLD, 13.69 GAL/SK,
Event	9	Pump Tail Cement	Pump Tail Cement	4/9/2015	22:12:55	COM5	174.00	13.10	4.50	0.0	PUMP 35.4 BBLS TAIL CEMENT @ 13.5 #, 107 SKS, 1.86 YLD, 9.41 GAL/SK,
Event	10	Shutdown	Shutdown	4/9/2015	22:23:25	USER	90.00	11.13	0.00	46.7	SHUTDOWN TO CLEAN LINES AND DROP TOP PLUG
Event	11	Clean Lines	Clean Lines	4/9/2015	22:25:21	USER	5.00	5.36	1.50	46.8	PUMPED 5 BBLS H2O TO CLEAN LINES BEFORE DROPPING PLUG AND DISPLACING.
Event	12	Drop Top Plug	Drop Top Plug	4/9/2015	22:26:31	USER	169.00	8.61	3.70	2.1	DROP TOP PLUG, TATTLE

TAIL INDICATED PLUG LEFT  
CMT HEAD

Event	13	Pump Displacement	Pump Displacement	4/9/2015	22:28:04	COM5	15.00	8.58	1.30	0.1
-------	----	-------------------	-------------------	----------	----------	------	-------	------	------	-----

CALCULATED 136.2 BBLS  
DISPLACEMENT, ACTUALLY  
PUMPED 134.75 BBLS ON  
TANKS TO LAND PLUG

Event	14	Cement Returns to Surface	Cement Returns to Surface	4/9/2015	23:07:06	USER	2017.00	8.48	0.00	131.8
-------	----	---------------------------	---------------------------	----------	----------	------	---------	------	------	-------

CALCULATED 29 BBLS  
CEMENT RETURNS TO  
SURFACE, ACTUALLY  
CIRCULATED ONLY TRACE  
AMOUNT OF  
CONTAMINATED WATER  
SPACER AND SCAVENGER,  
NO SIGNIFICANT CEMENT  
RETURNS TO SURFACE

Event	15	Bump Plug	Bump Plug	4/9/2015	23:08:28	USER	1818.00	8.51	1.30	133.1
-------	----	-----------	-----------	----------	----------	------	---------	------	------	-------

CALCULATED 716 PSI  
DIFFERENTIAL WHEN PLUG  
LANDS, PLUG BUMPED @  
1830 PSI

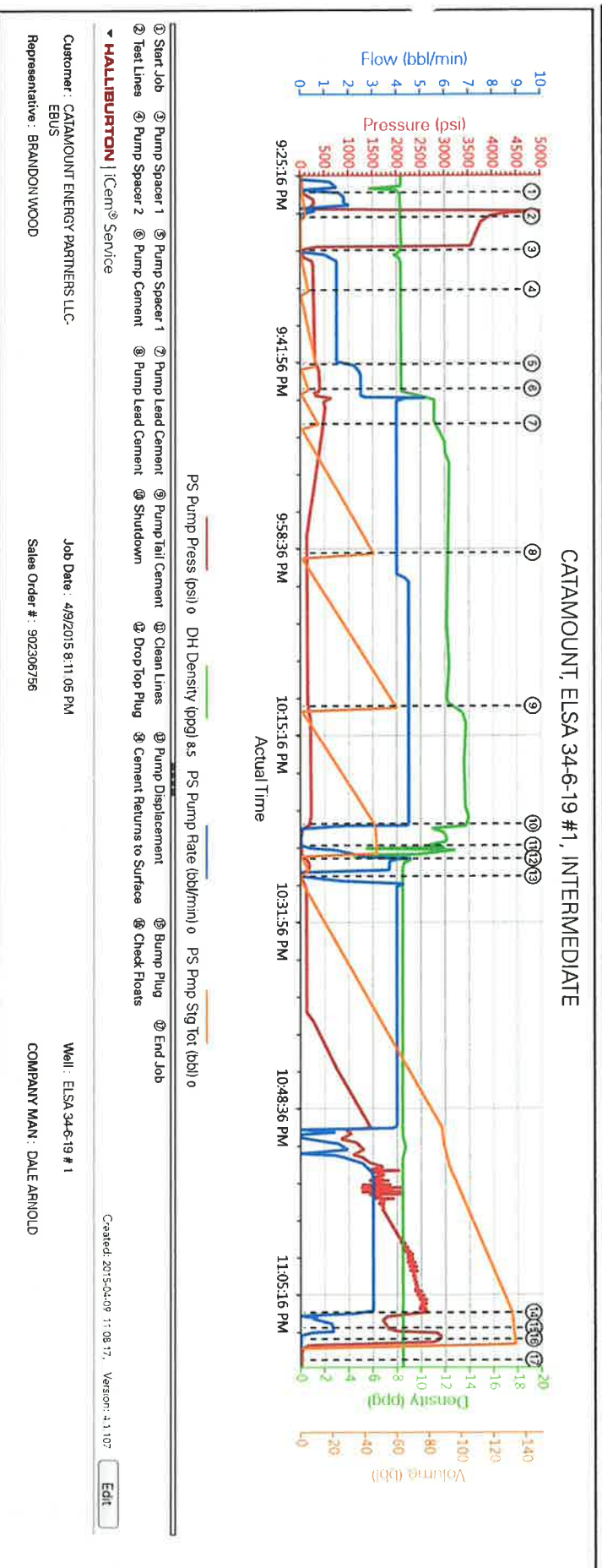
Event	16	Check Floats	Check Floats	4/9/2015	23:09:28	USER	2811.00	8.47	0.00	133.3
-------	----	--------------	--------------	----------	----------	------	---------	------	------	-------

PRESSURED UP TO 2930 PSI,  
RELEASED PRESSURE  
FLOATS HELD, FLOWED  
BACK .5 BBLS

Event	17	End Job	End Job	4/9/2015	23:11:20	COM5	7.00	8.47	0.00	0.0
-------	----	---------	---------	----------	----------	------	------	------	------	-----

## 2.0 Attachments

### 2.1 CATAMOUNT, ELSA 34-6-19 # 1, PRODUCTION.png



The Road to Excellence Starts with Safety

Sold To #: 367830	Ship To #: 3627170	Quote #:	Sales Order #: 0902306756
Customer: CATAMOUNT ENERGY PARTNERS LLC-EBUS		Customer Rep:	
Well Name: ELSA 34-6-19	Well #: 1	API/UWI #: 05-067-09922-00	
Field: IGNACIO-BLANCO	City (SAP): BAYFIELD	County/Parish: LA PLATA	State: COLORADO
Legal Description: SE SE-19-34N-6W-1303FSL-290FEL			
Contractor: D & J DRLG		Rig/Platform Name/Num: D & J 1	
Job BOM: 7522			
Well Type: COAL DE-GAS			
Sales Person: HALAMERICA\HB21661		Srcv Supervisor: Lemont Jojola	
<b>Job</b>			

Formation Name			
Formation Depth (MD)	Top		Bottom
Form Type			BHST
Job depth MD	3505ft		Job Depth TVD
Water Depth			Wk Ht Above Floor
Perforation Depth (MD)	From		To

### Well Data

Description	New / Used	Size in	ID in	Weight lbm/ft	Thread	Grade	Top MD ft	Bottom MD ft	Top TVD ft	Bottom TVD ft
Casing		9.625	8.921	36			0	482		0
Casing		7	6.366	23			0	3505	0	0
Open Hole Section			8.75				482	3515	0	0

### Tools and Accessories

Type	Size in	Qty	Make	Depth ft	Type	Size in	Qty	Make
Guide Shoe	7			3505	Top Plug	7		HES
Float Shoe	7				Bottom Plug	7		HES
Float Collar	7				SSR plug set	7		HES
Insert Float	7				Plug Container	7		HES
Stage Tool	7				Centralizers	7		HES

### Miscellaneous Materials

Gelling Agt	Conc	Surfactant	Conc	Acid Type	Qty	Conc
Treatment Fld	Conc	Inhibitor	Conc	Sand Type	Size	Qty

### Fluid Data

Stage/Plug #: 1										
Fluid #	Stage Type	Fluid Name	Qty	Qty UoM	Mixing Density lbm/gal	Yield ft <sup>3</sup> /sack	Mix Fluid Gal	Rate bbl/min	Total Mix Fluid Gal	
1	Chemical Wash	Chemical Wash	10	bbl	8.35					
42 gal/bbl		FRESH WATER								

Fluid #	Stage Type	Fluid Name	Qty	Qty UoM	Mixing Density lbm/gal	Yield ft3/sack	Mix Fluid Gal	Rate bbl/mi n	Total Mix Fluid Gal
2	Lead Scavenger	ECONOCEM (TM) SYSTEM	20	sack	11.3	3.25		6	19.81
3	First Lead Cement	VARICEM (TM) CEMENT	73	sack	12.3	2.43		6	13.69
4	Second Lead Cement	VARICEM (TM) CEMENT	110	sack	12.3	2.44		6	13.72
0.30 %		SUPER CBL, 50 LB PAIL (100003668)							
5	Tail Cement	VARICEM (TM) CEMENT	107	sack	13.5	1.86		6	9.41
0.30 %		SUPER CBL, 50 LB PAIL (100003668)							
6	Displacement	Displacement	136.2	bbl	8.33				
<b>Cement Left In Pipe</b>	<b>Amount</b>	41 ft		<b>Reason</b>				Shoe Joint	
<b>Mix Water:</b>	pH ##	<b>Mix Water Chloride:</b> ### ppm			<b>Mix Water Temperature:</b> ## °F °C				
<b>Cement Temperature:</b>	## °F °C	<b>Plug Displaced by:</b> ## lb/gal kg/m3 XXXX			<b>Disp. Temperature:</b> ## °F °C				
<b>Plug Bumped?</b>	Yes/No	<b>Bump Pressure:</b> ##### psi MPa			<b>Floats Held?</b> Yes/No				
<b>Cement Returns:</b>	## bbl m3	<b>Returns Density:</b> ## lb/gal kg/m3			<b>Returns Temperature:</b> ## °F °C				
<b>Comment</b>									