

HALLIBURTON

iCem[®] Service

CATAMOUNT ENERGY PARTNERS LLC

For: DALE ARNOLD

Date: Sunday, April 05, 2015

CATAMOUNT ELSA 34-6-19 SURFACE 902298257

Case 1

Job Date: Sunday, April 05, 2015

Sincerely,
DAVID HAHN

P

2.0 Real-Time Job Summary

2.1 Job Event Log

Type	Seq. No.	Activity	Graph Label	Date	Time	Source	PS Pump Press (psi)	DH Density (ppg)	Comb Pump Rate (bbl/mh)	Comments
Event	1	Call Out	Call Out	4/5/2015	08:00:00	USER				
Event	2	Pre-Convoy Safety Meeting	Pre-Convoy Safety Meeting	4/5/2015	10:00:00	USER				
Event	3	Depart from Service Center or Other Site	Depart from Service Center or Other Site	4/5/2015	10:15:00	USER				
Event	4	Arrive at Location from Service Center	Arrive at Location from Service Center	4/5/2015	12:00:00	USER				
Event	5	Pre-Rig Up Safety Meeting	Pre-Rig Up Safety Meeting	4/5/2015	13:30:00	USER				
Event	6	Rig-Up Equipment	RIG UP EQUIPMENT	4/5/2015	13:45:00	USER				
Event	7	Rig-Up Completed	Rig-Up Completed	4/5/2015	14:00:00	USER				
Event	8	Pre-Job Safety Meeting	Pre-Job Safety Meeting	4/5/2015	14:45:00	USER				
Event	9	Start Job	Start Job	4/5/2015	16:00:57	COM4	-14.70	8.23	0.00	
Event	10	Test Lines	TEST LINES TO 2000 PSI	4/5/2015	16:04:34	USER	2800.30	8.32	0.00	
Event	11	Pump Spacer	PUMP 20 BBL FRESH WATER	4/5/2015	16:08:00	USER	-9.70	8.30	1.40	
Event	12	Pump Lead Cement	PUMP 37.8 BBL @ 15.8	4/5/2015	16:14:17	USER	74.30	15.24	4.00	
Event	13	Pump Tail Cement	PUMP 19.1 BBL @ 15.7	4/5/2015	16:25:51	USER	80.30	15.83	4.10	
Event	14	Shutdown	Shutdown	4/5/2015	16:27:48	USER	36.30	16.21	0.00	
Event	15	Drop Top Plug	Drop Top Plug	4/5/2015	16:28:14	USER	2.30	16.14	0.00	
Event	16	Pump Displacement	PUMP 34.4 BBL DISPLACEMENT	4/5/2015	16:28:52	USER	12.30	14.68	1.30	

HALLIBURTON

Customer: DELETEDHALLIBURTON INTERNATIONAL

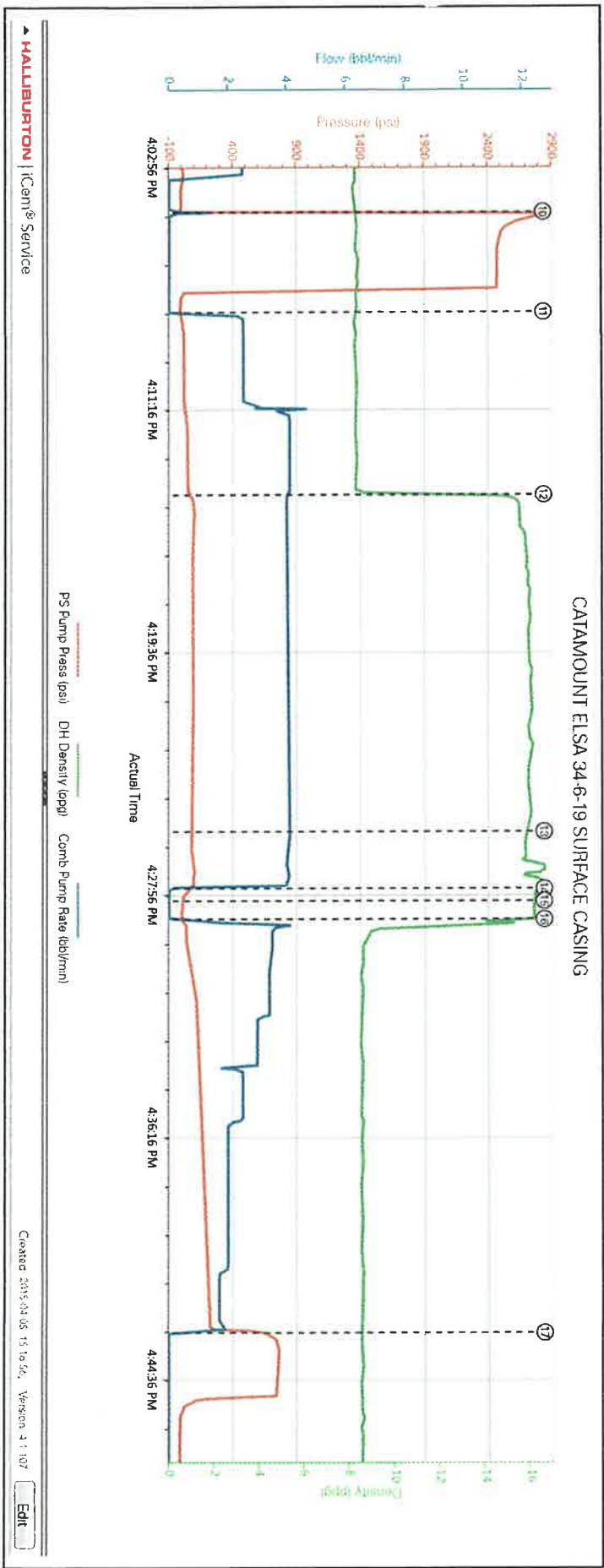
Job: CATAMOUNT EISA 34-6-19 SURFACE 902298257

Case: Case 1 | SO#: 902298257

Event	17	Bump Plug	BUMP PLUG @ 260 PSI TAKE TO 765 PSI	4/5/2015	16:43:05	USER	706.30	8.57	0.00	17 BBL CEMENT BACK TO SURFACE
Event	18	Check Floats	Check Floats .25 BBL BACK	4/5/2015	16:50:00	USER	-15.70	8.61	0.00	
Event	19	End Job	End Job	4/5/2015	16:52:10	COM4	-16.70	0.96	0.00	
Event	20	Pre-Rig Down Safety Meeting	Pre-Rig Down Safety Meeting	4/5/2015	17:00:00	USER				
Event	21	Rig-Down Equipment	Rig-Down Equipment	4/5/2015	17:15:00	USER				
Event	22	Rig-Down Completed	Rig-Down Completed	4/5/2015	17:45:00	USER				
Event	23	Pre-Convoy Safety Meeting	Pre-Convoy Safety Meeting	4/5/2015	17:55:00	USER				
Event	24	Depart Location for Service Center or Other Site	Depart Location for Service Center or Other Site	4/5/2015	18:00:00	USER				

3.0 Attachments

3.1 CATAMOUNT ELSA SURFACE.PNG



The Road to Excellence Starts with Safety

Sold To #: 367830	Ship To #: 3627170	Quote #:	Sales Order #: 0902298257
Customer: CATAMOUNT ENERGY PARTNERS LLC-EBUS		Customer Rep: DALE ARNOLD	
Well Name: ELSA 34-6-19	Well #: 1	API/UWI #: 05-067-09922-00	
Field: IGNACIO-BLANCO	City (SAP): BAYFIELD	County/Parish: LA PLATA	State: COLORADO
Legal Description: SE SE-19-34N-6W-1303FSL-290FEL			
Contractor: D & J DRLG		Rig/Platform Name/Num: D & J 1	
Job BOM: 7521			
Well Type: COAL DE-GAS			
Sales Person: HALAMERICA\HB50180		Srvc Supervisor: David Hahn	
Job			

Formation Name			
Formation Depth (MD)	Top		Bottom
Form Type			BHST
Job depth MD	400ft		Job Depth TVD
Water Depth			Wk Ht Above Floor
Perforation Depth (MD)	From		To

Well Data

Description	New / Used	Size in	ID in	Weight lbm/ft	Thread	Grade	Top MD ft	Bottom MD ft	Top TVD ft	Bottom TVD ft
Casing		16	15.25	65			0	60		
Casing		9.625	8.921	36	8 RD	H-40	0	480		
Open Hole Section			12.25				60	400		

Tools and Accessories

Type	Size in	Qty	Make	Depth ft	Type	Size in	Qty	Make
Guide Shoe	9.625			400	Top Plug	9.625	1	HES
Float Shoe	9.625				Bottom Plug	9.625		HES
Float Collar	9.625				SSR plug set	9.625		HES
Insert Float	9.625				Plug Container	9.625	1	HES
Stage Tool	9.625				Centralizers	9.625		HES

Miscellaneous Materials

Gelling Agt	Conc	Surfactant	Conc	Acid Type	Qty	Conc
Treatment Fld	Conc	Inhibitor	Conc	Sand Type	Size	Qty

Fluid Data

Stage/Plug #: 1

Fluid #	Stage Type	Fluid Name	Qty	Qty UoM	Mixing Density lbm/gal	Yield ft ³ /sack	Mix Fluid Gal	Rate bbl/min	Total Mix Fluid Gal
1	Fresh Water	Fresh Water	20	bbl	8.33				

Fluid #	Stage Type	Fluid Name	Qty	Qty UoM	Mixing Density lbm/gal	Yield ft ³ /sack	Mix Fluid Gal	Rate bbl/min	Total Mix Fluid Gal
---------	------------	------------	-----	---------	------------------------	-----------------------------	---------------	--------------	---------------------

2	Lead Cement	HALCEM (TM) SYSTEM	180	sack	15.8	1.18		4	5.24	
5.24 Gal		FRESH WATER								
0.1250 lbm		POLY-E-FLAKE (101216940)								
2 %		CALCIUM CHLORIDE, PELLET, 50 LB (101509387)								
Fluid #	Stage Type	Fluid Name	Qty	Qty UoM	Mixing Density lbm/gal	Yield ft3/sack	Mix Fluid Gal	Rate bbl/min	Total Mix Fluid Gal	
3	Tail Cement	HALCEM (TM) SYSTEM	90	sack	15.7	1.19		4	5.26	
0.1250 lbm		POLY-E-FLAKE (101216940)								
0.30 %		SUPER CBL, 50 LB PAIL (100003668)								
5.26 Gal		FRESH WATER								
2 %		CALCIUM CHLORIDE, PELLET, 50 LB (101509387)								
Fluid #	Stage Type	Fluid Name	Qty	Qty UoM	Mixing Density lbm/gal	Yield ft3/sack	Mix Fluid Gal	Rate bbl/min	Total Mix Fluid Gal	
4	Displacement Mud		34.4	bbl	10					
Cement Left In Pipe		Amount	45 ft		Reason			Shoe Joint		
Mix Water:		pH ##	Mix Water Chloride:## ppm		Mix Water Temperature:## °F °C					
Cement Temperature:## °F °C		Plug Displaced by:## lb/gal kg/m3 XXXX			Disp. Temperature:## °F °C					
Plug Bumped?Yes/No		Bump Pressure:#### psi MPa			Floats Held?Yes/No					
Cement Returns:## bbl m3		Returns Density:## lb/gal kg/m3			Returns Temperature:## °F °C					
Comment										