



Well Name: RU 32-8  
Surface Location: RU 21-8 Pad  
North American Datum 1983 , US State Plane 1983 , Colorado Central Zone  
Ground Elevation: 7736.00

+N/-S  
0.00

+E/-W  
0.00

Northing  
1602640.77

Easting  
2350474.70

Latitude  
39.465438

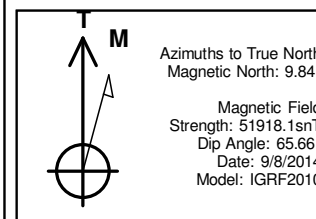
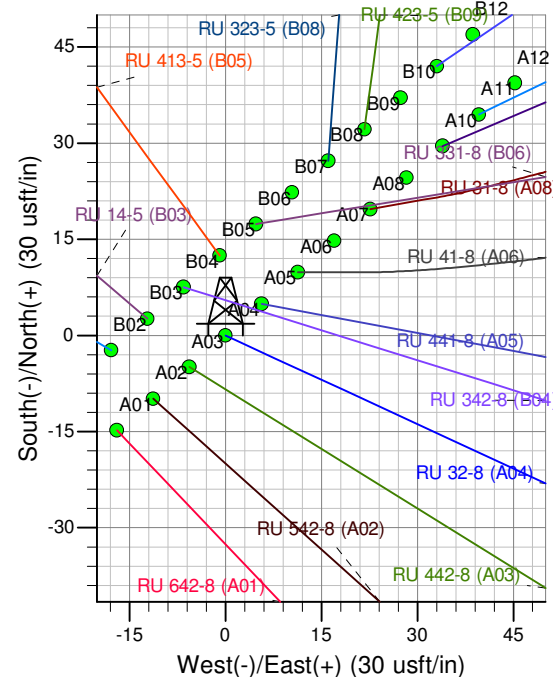
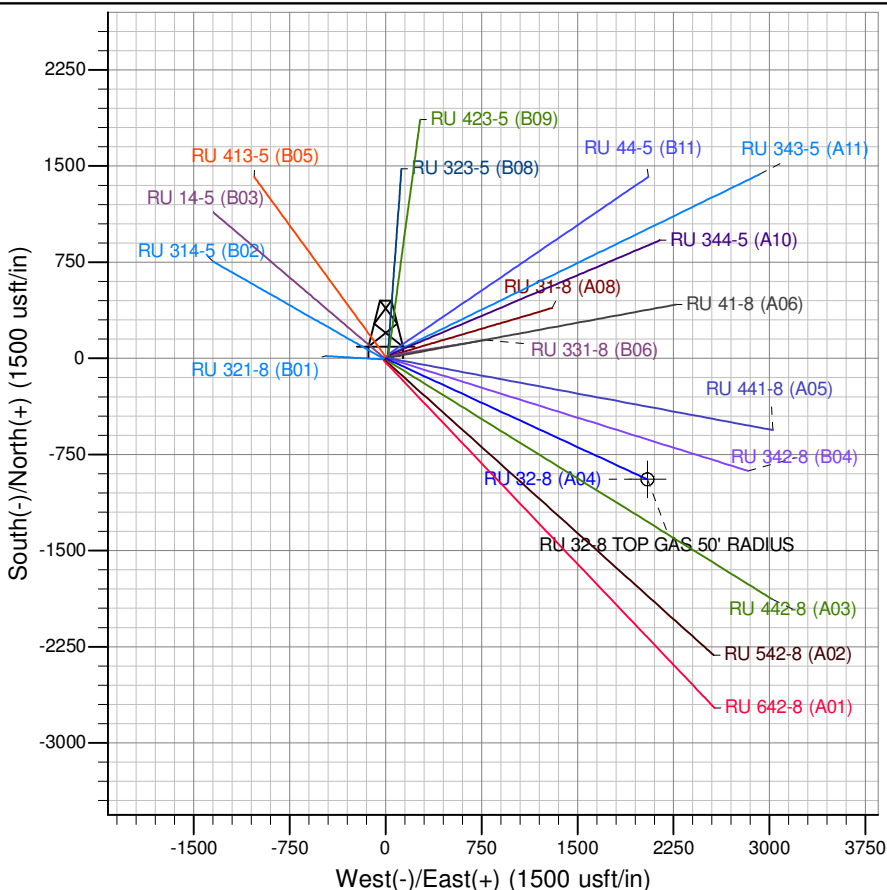
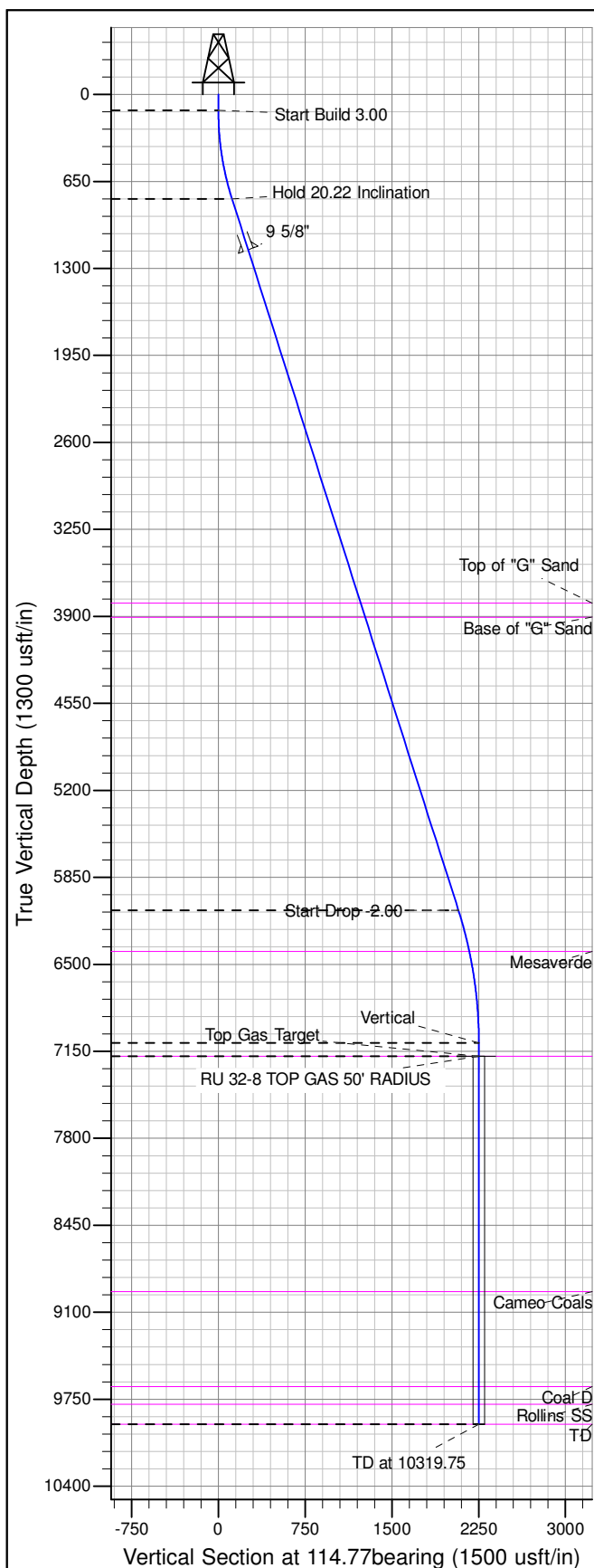
Longitude  
-107.800892

Slot  
A04

KELLY BUSHING @ 7762.00usft (Nabors 576 (26' RKB) mab)

#### ANNOTATIONS

TVD	MD	Inc	Azi	+N/-S	+E/-W	Vsect	Departure	Annotation
120.00	120.00	0.00	0.00	0.00	0.00	0.00	0.00	Start Build 3.00
780.00	793.89	20.22	114.77	-49.30	106.84	117.66	117.66	Hold 20.22 Inclination
6096.00	6458.91	20.22	114.77	-869.54	1884.40	2075.34	2075.34	Start Drop -2.00
7086.00	7469.75	0.00	0.00	-943.49	2044.65	2251.84	2251.84	Vertical
7186.00	7569.75	0.00	0.00	-943.49	2044.65	2251.84	2251.84	Top Gas Target
9936.00	10319.75	0.00	0.00	-943.49	2044.65	2251.84	2251.84	TD at 10319.75



Project: RU 08-07S-093W  
Site: RU 21-8 Pad  
Well: RU 32-8  
Design #2 14May15 sam