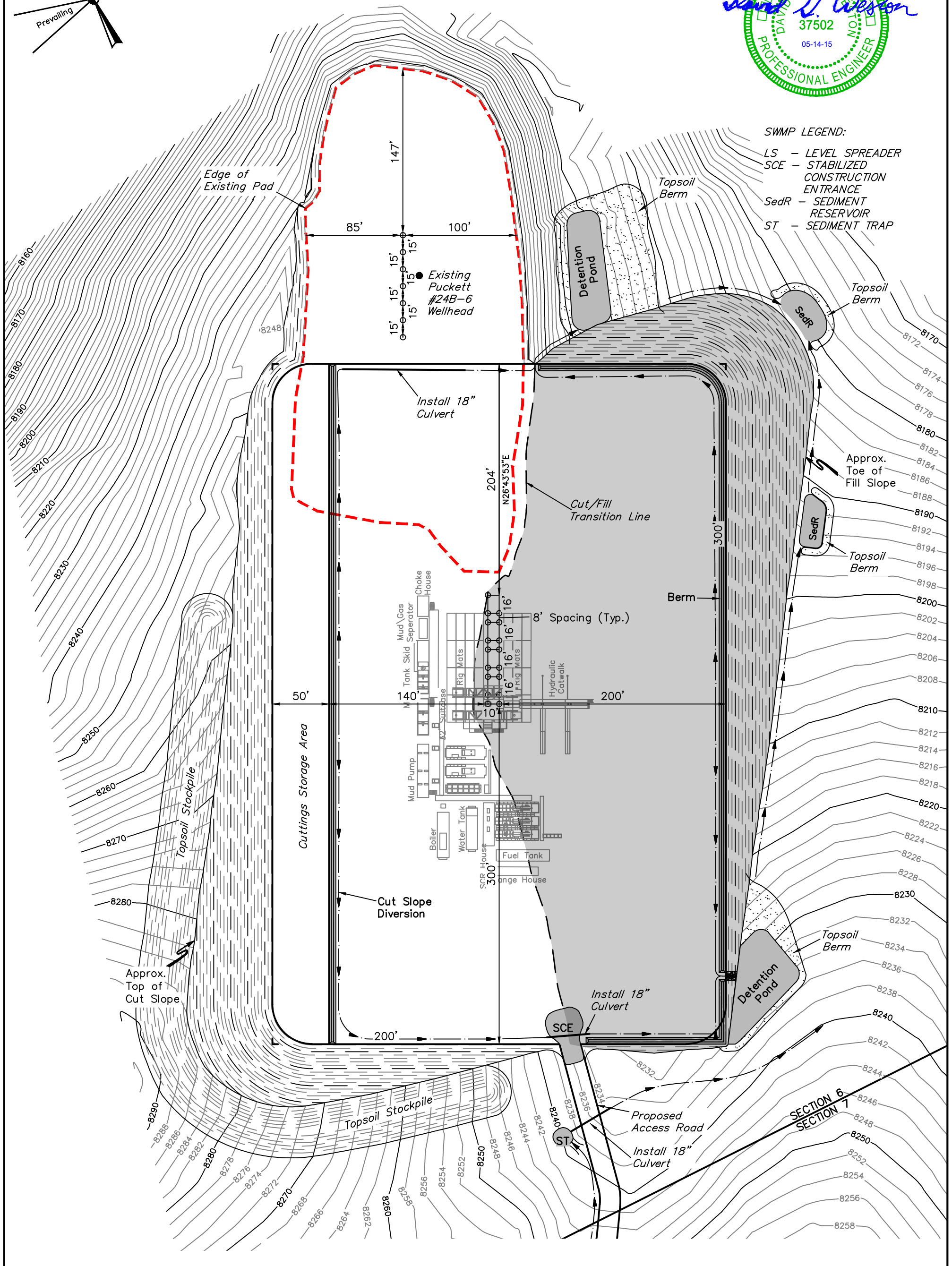
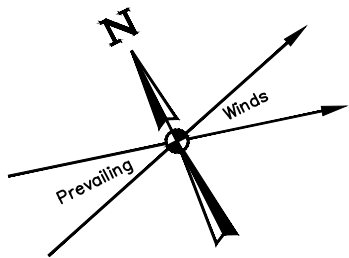


**MESA N6-796**  
**SE 1/4 SW 1/4, SECTION 6, T7S, R96W, 6th P.M.**  
**GARFIELD COUNTY, COLORADO**

DRAWN BY: J.W.	DATE DRAWN: 03-27-15
SCALE: 1" = 80'	REVISED: 05-14-15
<b>TYPICAL RIG LAYOUT</b>	<b>FIGURE #3</b>



**UELS, LLC**  
Corporate Office \* 85 South 200 East  
Vernal, UT 84078 \* (435) 789-1017



**NOTES:**

- Flare pit is to be located a min. of 100' from the wellhead.
- Contours shown at 2' intervals.

**Caerus Oil & Gas LLC**

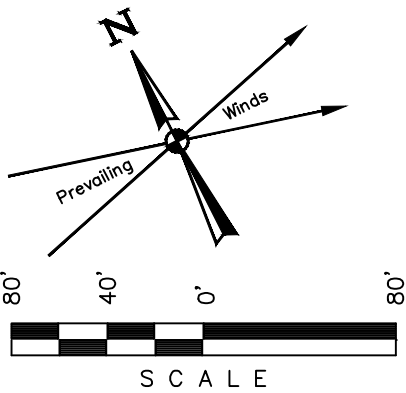
**MESA N6-796**  
**SE 1/4 SW 1/4, SECTION 6, T7S, R96W, 6th P.M.**  
**GARFIELD COUNTY, COLORADO**



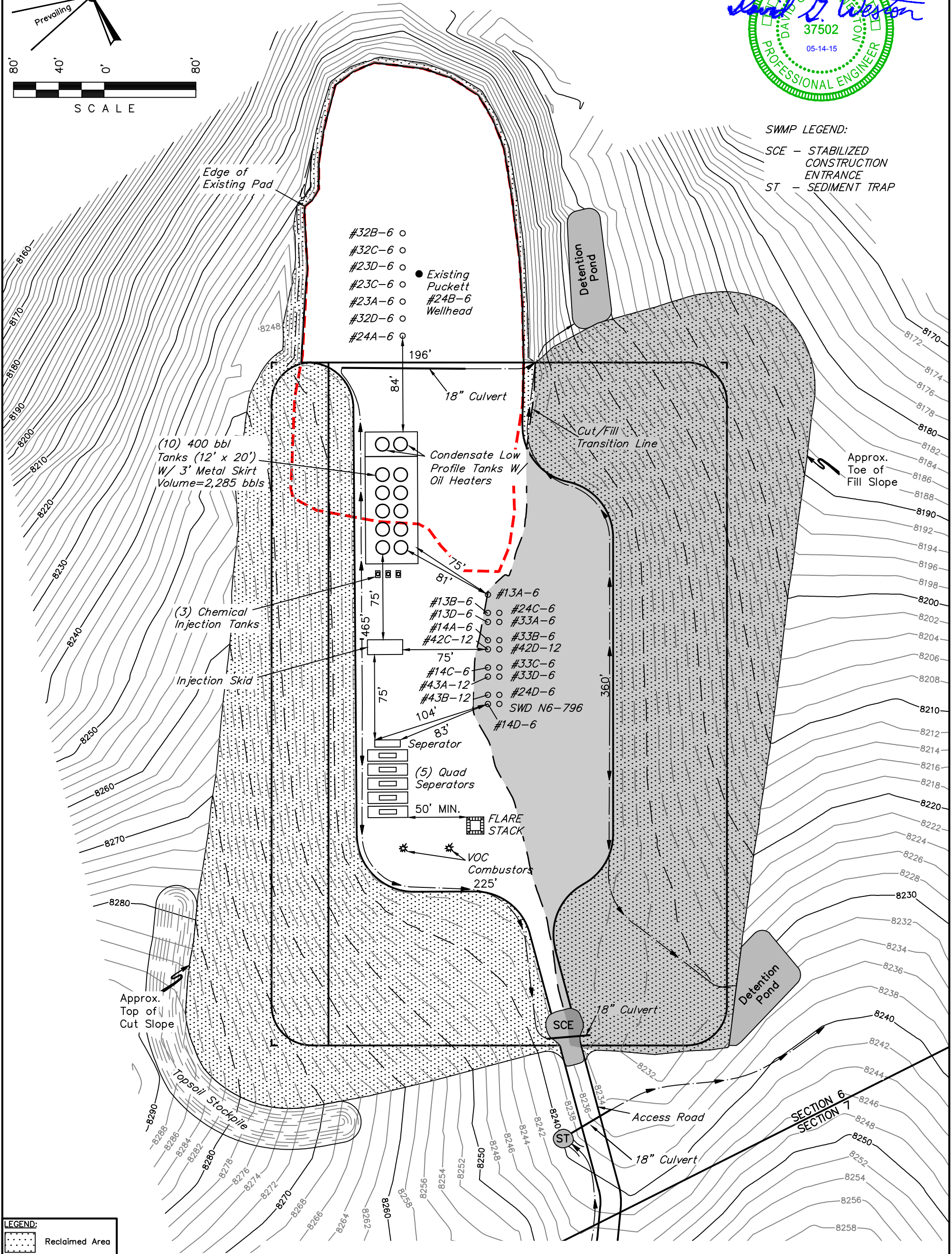
**UELS, LLC**  
Corporate Office \* 85 South 200 East  
Vernal, UT 84078 \* (435) 789-1017

DRAWN BY: J.W.	DATE DRAWN: 03-27-15
SCALE: 1" = 80'	REVISED: 05-14-15
<b>TYPICAL RIG LAYOUT</b>	<b>FIGURE #3A</b>





SWMP LEGEND:  
SCE – STABILIZED CONSTRUCTION ENTRANCE  
ST – SEDIMENT TRAP



LEGEND:  
Reclaimed Area

APPROXIMATE PRODUCTION PAD ACREAGE = ±3.292 ACRES      APPROXIMATE RECLAIMED AREA ACREAGE = ±5.784 ACRES      TOTAL ACREAGE = ±9.076 ACRES

NOTES:  
• Contours shown at 2' intervals.

Caerus Oil & Gas LLC

MESA N6-796  
SE 1/4 SW 1/4, SECTION 6, T7S, R96W, 6th P.M.  
GARFIELD COUNTY, COLORADO



UELS, LLC  
Corporate Office \* 85 South 200 East  
Vernal, UT 84078 \* (435) 789-1017

DRAWN BY: J.W.	DATE DRAWN: 03-27-15
SCALE: 1" = 80'	REVISED: 05-14-15
INTERIM RECLAMATION PLAN	FIGURE #4