

PROCEED IN A NORTHWESTERLY DIRECTION FROM PARACHUTE, COLORADO ALONG COUNTY ROAD 215 APPROXIMATELY 7.1 MILES TO THE JUNCTION OF THIS ROAD AND GARDEN GULCH ROAD TO THE NORTHWEST; TURN LEFT AND PROCEED IN A NORTHWESTERLY, THEN SOUTHWESTERLY THEN EASTERLY, THEN SOUTHERLY, THEN SOUTHWESTERLY DIRECTION APPROXIMATELY 8.4 MILES TO THE JUNCTION OF THIS ROAD AND AN EXISTING ROAD TO THE SOUTHEAST; TURN LEFT AND PROCEED IN A SOUTHEASTERLY, THEN SOUTHERLY DIRECTION APPROXIMATELY 6.0 MILES TO THE JUNCTION OF THIS ROAD AND AN EXISTING ROAD TO THE NORTHEAST; TURN LEFT AND PROCEED IN A NORTHEASTERLY, THEN NORTHWESTERLY, THEN NORTHERLY DIRECTION APPROXIMATELY 2.0 MILES TO THE JUNCTION OF THIS ROAD AND THE EXISTING ACCESS ROAD FOR THE PUCKETT 21D-7D WELL PAD TO THE NORTH; TURN RIGHT AND PROCEED IN A NORTHERLY DIRECTION APPROXIMATELY 0.1 MILES TO THE BEGINNING OF THE PROPOSED ACCESS ROAD TO THE NORTH; FOLLOW ROAD FLAGS IN A NORTHERLY DIRECTION APPROXIMATELY 826' TO THE PROPOSED LOCATION.

TOTAL DISTANCE FROM PARACHUTE, COLORADO TO THE PROPOSED WELL LOCATION IS APPROXIMATELY 23.8 MILES.

Caerus Oil & Gas LLC

**MESA N6-796
SE 1/4 SW 1/4, SECTION 6, T7S, R96W, 6th P.M.
GARFIELD COUNTY, COLORADO**



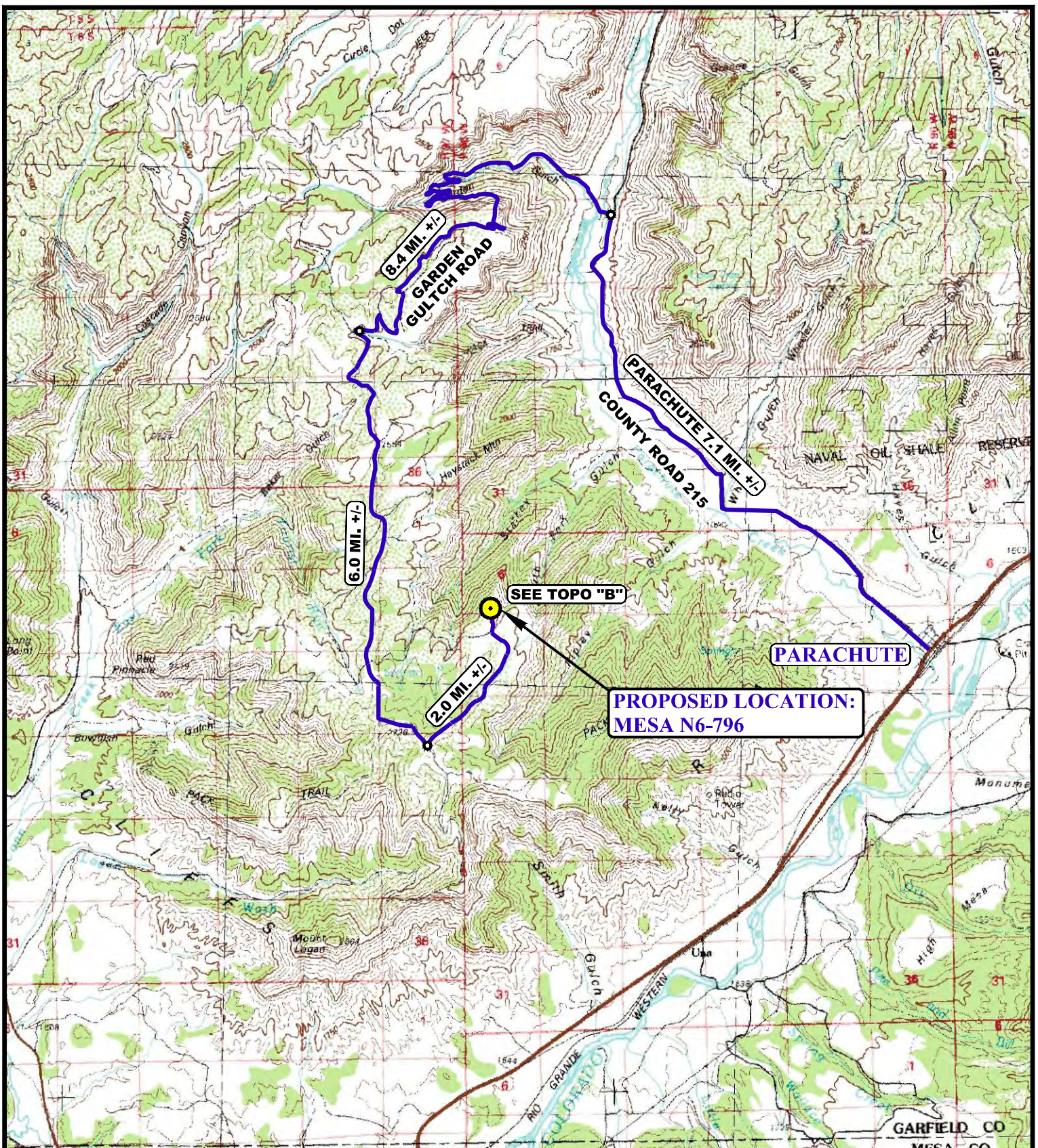
UELS, LLC
Corporate Office * 85 South 200 East
Vernal, UT 84078 * (435) 789-1017

DRAWN BY: R.C.

DATE DRAWN: 03-26-15

REVISED: 05-18-15

ROAD DESCRIPTION



LEGEND:

- PROPOSED LOCATION
- ACCESS ROAD



UELS, LLC
 Corporate Office * 85 South 200 East
 Vernal, UT 84078 * (435) 789-1017



Caerus Oil & Gas LLC

MESA N6-796
 SE 1/4 SW 1/4, SECTION 6, T7S, R96W, 6th P.M.
 GARFIELD COUNTY, COLORADO

DRAWN BY: R.C.

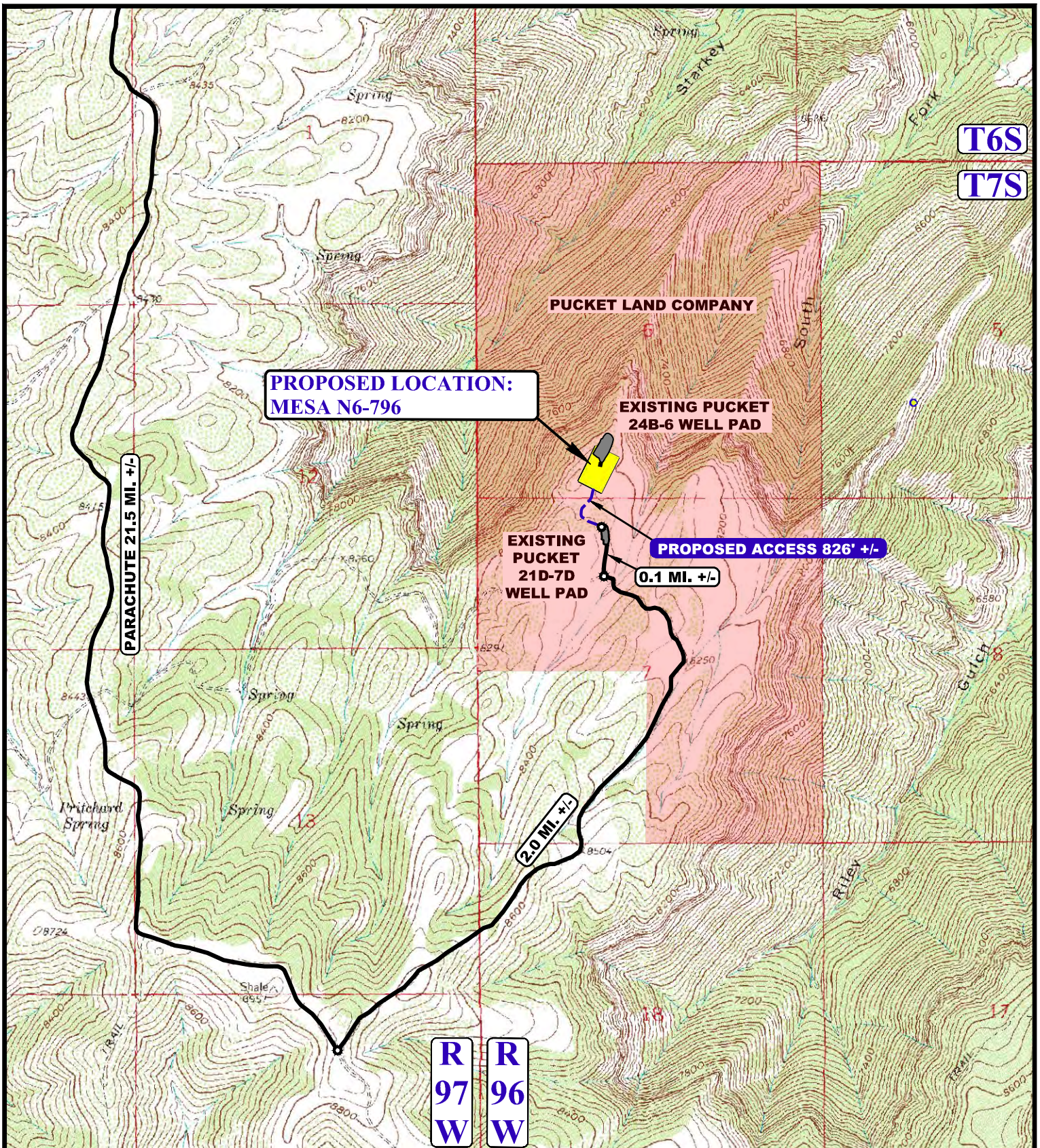
DATE DRAWN: 03-26-15

SCALE: 1:100,000

REVISED: 05-18-15

ACCESS ROAD MAP

TOPO A



LEGEND:

— EXISTING ROAD
- - - PROPOSED ROAD

Caerus Oil & Gas LLC

MESA N6-796
SE 1/4 SW 1/4, SECTION 6, T7S, R96W, 6th P.M.
GARFIELD COUNTY, COLORADO

DRAWN BY: C.M.F.

DATE DRAWN: 09-18-14

SCALE: 1" = 2000'

REVISED: 05-18-15 R.C.

ACCESS ROAD MAP

TOPO B



UELS, LLC
Corporate Office * 85 South 200 East
Vernal, UT 84078 * (435) 789-1017

