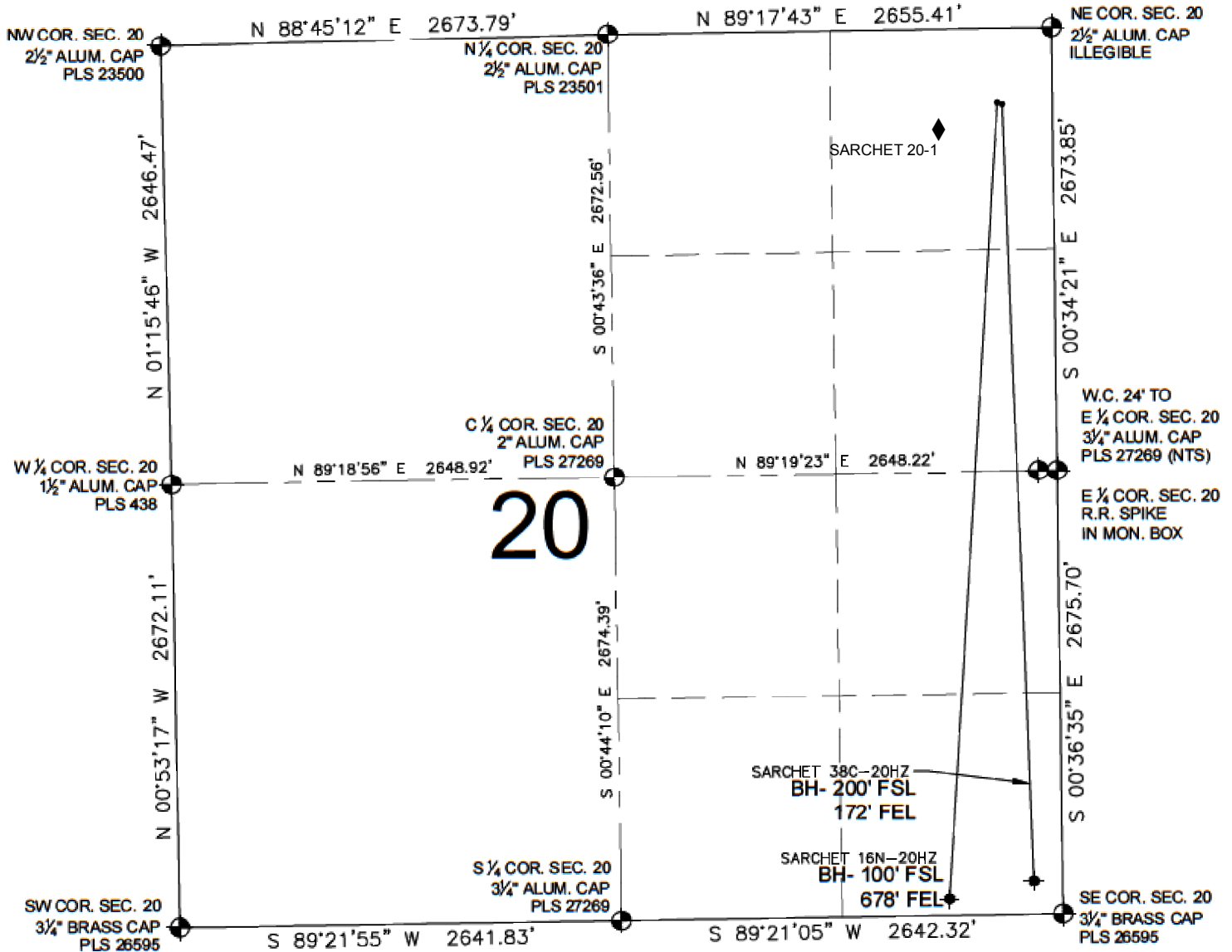


SARCHET 16N-20HZ MULTI-WELL PLAN

SECTION 20, TOWNSHIP 2 NORTH, RANGE 65 WEST, 6TH P.M.



NOTES:

SARCHET 16N-20HZ TO BE AT 449' FNL, 330' FEL.
BOTTOM HOLE AT 100' FSL & 678' FEL.
SARCHET 38C-20HZ TO BE AT 458' FNL, 301' FEL.
BOTTOM HOLE AT 200' FSL & 172' FEL.

LEGEND

= EXISTING MONUMENT
 = BOTTOM HOLE
 BH= BOTTOM HOLE
 = PROPOSED WELL
 = EXISTING WELL

PREPARED BY:

PFS

Petroleum Field Services, LLC
7535 Hilltop Circle
Denver, CO 80221

KERR-MCGEE OIL & GAS ONSHORE LP

FIELD DATE:
11-05-14

DRAWING DATE:
03-04-15

SURFACE LOCATION:

NE 1/4 NE 1/4, SEC. 20, T2N, R65W, 6TH P.M.
WELD COUNTY, COLORADO

