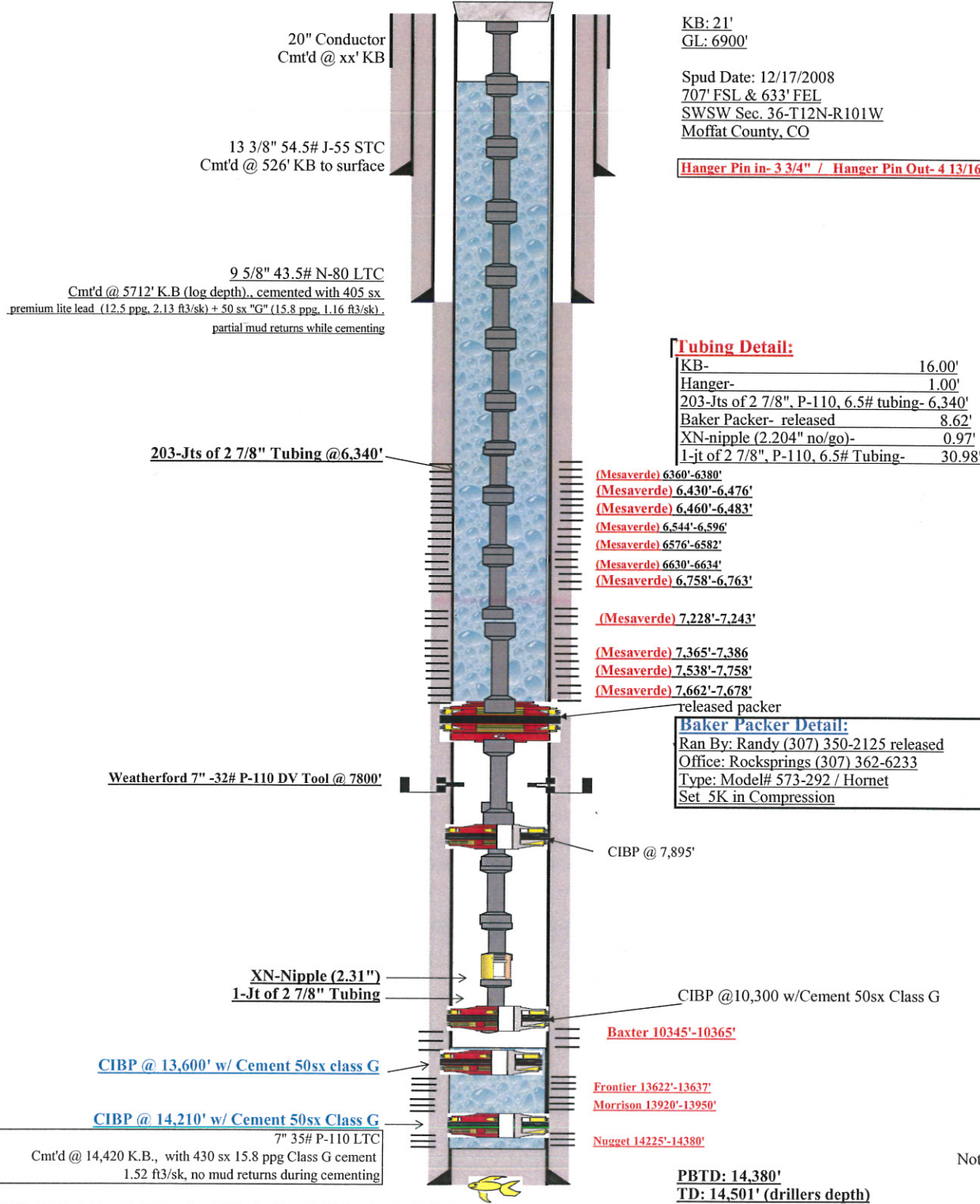


Grynberg Petroleum Hiawatha Deep #4-36

API # 05- 081-07427

Current Schematic May 31, 2015



KB: 21'
GL: 6900'

Spud Date: 12/17/2008
707' FSL & 633' FEL
SWSW Sec. 36-T12N-R101W
Moffat County, CO

Hanger Pin in- 3 3/4" / Hanger Pin Out- 4 13/16"

Tubing Detail:

KB-	16.00'
Hanger-	1.00'
203-Jts of 2 7/8", P-110, 6.5# tubing-	6.340'
Baker Packer- released	8.62'
XN-nipple (2.204" no/go)-	0.97'
1-jt of 2 7/8", P-110, 6.5# Tubing-	30.98'

- (Mesaverde) 6360'-6380'
- (Mesaverde) 6430'-6476'
- (Mesaverde) 6460'-6483'
- (Mesaverde) 6544'-6596'
- (Mesaverde) 6576'-6582'
- (Mesaverde) 6630'-6634'
- (Mesaverde) 6758'-6763'
- (Mesaverde) 7.228'-7.243'
- (Mesaverde) 7.365'-7.386
- (Mesaverde) 7.538'-7.758'
- (Mesaverde) 7.662'-7.678'

released packer
Baker Packer Detail:
Ran By: Randy (307) 350-2125 released
Office: Rocksprings (307) 362-6233
Type: Model# 573-292 / Hornet
Set .5K in Compression

7" 35# P-110 LTC
Cmt'd @ 14,420 K.B., with 430 sx 15.8 ppg Class G cement
1.52 ft3/sk, no mud returns during cementing

JUNK - 7" float shoe, 1 jt 7" casing, 7" float collar, 1 jt 7" casing lost in hole

PBTD: 14,380'
TD: 14,501' (drillers depth)

Not to Scale