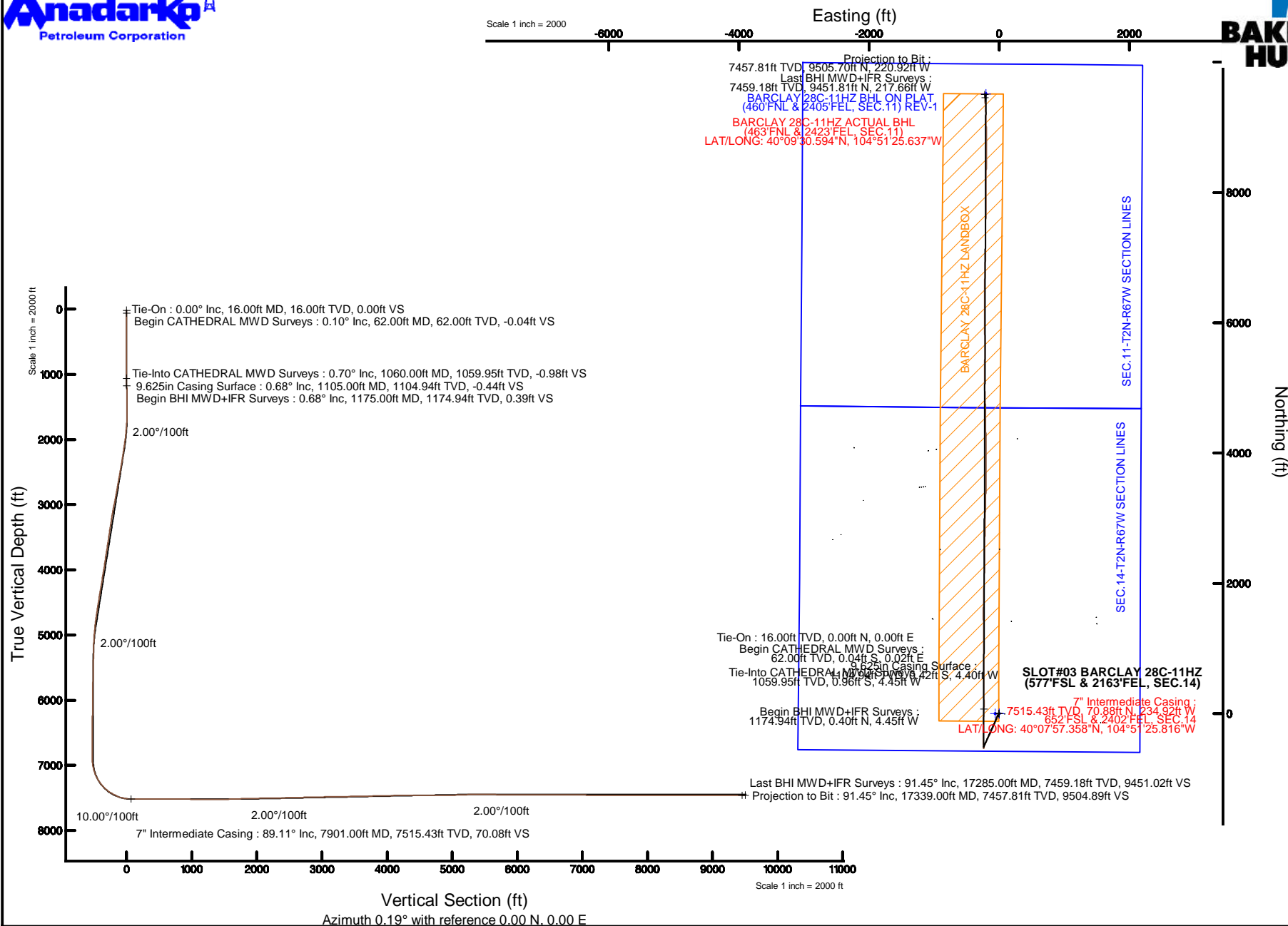




Plot reference wellpath is BARCLAY 28C-11HZ (REV-B.0) PWP	
True vertical depths are referenced to XTREME 23 (16KB) (RKB)	Grid System: NAD83 / Lambert Colorado SP, Northern Zone (501), US feet
Measured depths are referenced to XTREME 23 (16KB) (RKB)	North Reference: True north
XTREME 23 (16KB) (RKB) to Mean Sea Level: 4948 feet	Scale: True distance
Mean Sea Level to Mud line (At Slot: SLOT#03 BARCLAY 28C-11HZ (577FSL & 2163FEL, SEC.14)): 0 feet	Depths are in feet
Coordinates are in feet referenced to Slot	Created by: precain on 5/8/2015



REFERENCE WELLPATH IDENTIFICATION			
Operator	KERR-MCGEE OIL & GAS ONSHORE LP	Slot	SLOT#03 BARCLAY 28C-11HZ (577'FSL & 2163'FEL, SEC.14)
Area	COLORADO	Well	BARCLAY 28C-11HZ
Field	WELD COUNTY (KERR MCGEE)	Wellbore	BARCLAY 28C-11HZ AWB <17339>
Facility	SEC.14-T2N-R67W		

REPORT SETUP INFORMATION			
Projection System	NAD83 / Lambert Colorado SP, Northern Zone (501), US feet	Software System	WellArchitect® 4.1.1
North Reference	True	User	Precain
Scale	0.999959	Report Generated	5/8/2015 at 2:17:47 PM
Convergence at slot	0.42° East	Database/Source file	WellArchitectDB/BARCLAY_28C-11HZ_AWB__17339_.xml

WELLPATH LOCATION						
	Local coordinates		Grid coordinates		Geographic coordinates	
	North[ft]	East[ft]	Easting[US ft]	Northing[US ft]	Latitude	Longitude
Slot Location	-0.40	60.04	3179974.47	1291732.06	40°07'56.658"N	104°51'22.792"W
Facility Reference Pt			3179914.43	1291732.03	40°07'56.662"N	104°51'23.565"W
Field Reference Pt			3197771.84	1268891.29	40°04'09.600"N	104°47'36.000"W

WELLPATH DATUM			
Calculation method	Minimum curvature	XTREME 23 (16'KB) (RKB) to Facility Vertical Datum	4948.00ft
Horizontal Reference Pt	Slot	XTREME 23 (16'KB) (RKB) to Mean Sea Level	4948.00ft
Vertical Reference Pt	XTREME 23 (16'KB) (RKB)	XTREME 23 (16'KB) (RKB) to Mud Line at Slot (SLOT#03 BARCLAY 28C-11HZ (577'FSL & 2163'FEL, SEC.14))	4948.00ft
MD Reference Pt	XTREME 23 (16'KB) (RKB)	Section Origin	N 0.00, E 0.00 ft
Field Vertical Reference	Mean Sea Level	Section Azimuth	0.19°

REFERENCE WELLPATH IDENTIFICATION

Operator	KERR-MCGEE OIL & GAS ONSHORE LP	Slot	SLOT#03 BARCLAY 28C-11HZ (577'FSL & 2163'FEL, SEC.14)
Area	COLORADO	Well	BARCLAY 28C-11HZ
Field	WELD COUNTY (KERR MCGEE)	Wellbore	BARCLAY 28C-11HZ AWB <17339>
Facility	SEC.14-T2N-R67W		

WELLPATH DATA (177 stations) † = interpolated/extrapolated station

MD [ft]	Inclination [°]	Azimuth [°]	TVD [ft]	Vert Sect [ft]	North [ft]	East [ft]	Latitude	Longitude	DLS [°/100ft]	Comments
0.00†	0.000	157.800	0.00	0.00	0.00	0.00	40°07'56.658"N	104°51'22.792"W	0.00	
16.00	0.000	157.800	16.00	0.00	0.00	0.00	40°07'56.658"N	104°51'22.792"W	0.00	Tie-On
62.00	0.100	157.800	62.00	-0.04	-0.04	0.02	40°07'56.658"N	104°51'22.792"W	0.22	Begin CATHEDRAL MWD Surveys
172.00	0.300	156.200	172.00	-0.39	-0.39	0.17	40°07'56.654"N	104°51'22.790"W	0.18	
250.00	0.200	194.100	250.00	-0.71	-0.71	0.22	40°07'56.651"N	104°51'22.789"W	0.24	
331.00	0.400	204.100	331.00	-1.10	-1.10	0.07	40°07'56.647"N	104°51'22.791"W	0.25	
411.00	0.500	179.300	410.99	-1.71	-1.71	-0.04	40°07'56.641"N	104°51'22.793"W	0.27	
491.00	0.700	182.500	490.99	-2.54	-2.54	-0.06	40°07'56.633"N	104°51'22.793"W	0.25	
571.00	0.900	191.200	570.98	-3.65	-3.65	-0.20	40°07'56.622"N	104°51'22.795"W	0.29	
651.00	0.600	315.300	650.98	-3.97	-3.97	-0.62	40°07'56.619"N	104°51'22.800"W	1.67	
731.00	0.600	308.400	730.97	-3.41	-3.41	-1.24	40°07'56.624"N	104°51'22.808"W	0.09	
811.00	0.600	303.700	810.97	-2.92	-2.92	-1.92	40°07'56.629"N	104°51'22.817"W	0.06	
891.00	0.800	307.800	890.96	-2.35	-2.34	-2.71	40°07'56.635"N	104°51'22.827"W	0.26	
971.00	1.000	289.900	970.95	-1.78	-1.76	-3.81	40°07'56.641"N	104°51'22.841"W	0.43	
1060.00	0.700	9.300	1059.95	-0.98	-0.96	-4.45	40°07'56.648"N	104°51'22.849"W	1.25	Tie-Into CATHEDRAL MWD Surveys
1175.00	0.680	350.110	1174.94	0.39	0.40	-4.45	40°07'56.662"N	104°51'22.849"W	0.20	Begin BHI MWD+IFR Surveys
1360.00	0.720	328.130	1359.93	2.45	2.47	-5.26	40°07'56.682"N	104°51'22.860"W	0.15	
1544.00	1.000	324.820	1543.90	4.74	4.77	-6.79	40°07'56.705"N	104°51'22.879"W	0.15	
1636.00	1.140	222.090	1635.90	4.72	4.74	-7.87	40°07'56.705"N	104°51'22.893"W	1.82	
1728.00	2.960	203.450	1727.83	1.85	1.88	-9.43	40°07'56.677"N	104°51'22.913"W	2.08	
1820.00	4.680	201.100	1819.63	-3.84	-3.80	-11.72	40°07'56.620"N	104°51'22.943"W	1.88	
1912.00	6.480	203.270	1911.19	-12.12	-12.07	-15.12	40°07'56.539"N	104°51'22.987"W	1.97	
2005.00	8.490	205.120	2003.39	-23.17	-23.11	-20.11	40°07'56.430"N	104°51'23.051"W	2.18	
2097.00	9.870	208.410	2094.21	-36.28	-36.19	-26.75	40°07'56.300"N	104°51'23.136"W	1.60	
2190.00	8.710	207.100	2185.99	-49.58	-49.47	-33.75	40°07'56.169"N	104°51'23.226"W	1.27	
2282.00	10.150	205.470	2276.74	-63.13	-62.99	-40.41	40°07'56.036"N	104°51'23.312"W	1.59	
2374.00	11.360	201.030	2367.13	-78.93	-78.77	-47.15	40°07'55.880"N	104°51'23.399"W	1.59	
2548.00	9.320	196.980	2538.29	-108.44	-108.24	-57.41	40°07'55.588"N	104°51'23.531"W	1.24	
2633.00	10.250	198.070	2622.06	-122.22	-122.01	-61.77	40°07'55.452"N	104°51'23.587"W	1.12	
2718.00	10.500	198.140	2705.67	-136.79	-136.56	-66.52	40°07'55.308"N	104°51'23.648"W	0.29	
2803.00	10.870	205.970	2789.20	-151.37	-151.13	-72.45	40°07'55.165"N	104°51'23.725"W	1.76	
2888.00	12.430	201.690	2872.44	-167.10	-166.84	-79.34	40°07'55.009"N	104°51'23.813"W	2.10	
2973.00	11.960	200.770	2955.53	-183.86	-183.57	-85.84	40°07'54.844"N	104°51'23.897"W	0.60	
3058.00	11.070	200.760	3038.81	-199.75	-199.44	-91.86	40°07'54.687"N	104°51'23.975"W	1.05	
3145.00	11.270	207.390	3124.17	-215.13	-214.80	-98.73	40°07'54.535"N	104°51'24.063"W	1.49	
3232.00	10.960	206.590	3209.54	-230.10	-229.74	-106.34	40°07'54.388"N	104°51'24.161"W	0.40	
3318.00	10.380	204.880	3294.05	-244.46	-244.08	-113.26	40°07'54.246"N	104°51'24.250"W	0.77	
3405.00	9.070	202.240	3379.80	-257.94	-257.54	-119.15	40°07'54.113"N	104°51'24.326"W	1.59	
3490.00	9.020	200.010	3463.74	-270.42	-270.00	-123.97	40°07'53.990"N	104°51'24.388"W	0.42	
3576.00	8.910	208.900	3548.70	-282.60	-282.17	-129.49	40°07'53.870"N	104°51'24.459"W	1.61	
3663.00	10.150	204.360	3634.50	-295.51	-295.05	-135.91	40°07'53.742"N	104°51'24.542"W	1.67	
3749.00	9.260	203.150	3719.26	-308.79	-308.31	-141.76	40°07'53.611"N	104°51'24.617"W	1.06	
3836.00	10.280	209.670	3805.00	-322.00	-321.50	-148.35	40°07'53.481"N	104°51'24.702"W	1.73	
3921.00	9.270	206.010	3888.77	-334.76	-334.24	-155.11	40°07'53.355"N	104°51'24.789"W	1.39	
4008.00	9.950	206.170	3974.55	-347.83	-347.28	-161.50	40°07'53.226"N	104°51'24.871"W	0.78	

REFERENCE WELLPATH IDENTIFICATION

Operator	KERR-MCGEE OIL & GAS ONSHORE LP	Slot	SLOT#03 BARCLAY 28C-11HZ (577'FSL & 2163'FEL, SEC.14)
Area	COLORADO	Well	BARCLAY 28C-11HZ
Field	WELD COUNTY (KERR MCGEE)	Wellbore	BARCLAY 28C-11HZ AWB <17339>
Facility	SEC.14-T2N-R67W		

WELLPATH DATA (177 stations) † = interpolated/extrapolated station

MD (ft)	Inclination [°]	Azimuth [°]	TVD (ft)	Vert Sect (ft)	North (ft)	East (ft)	Latitude	Longitude	DLS [°/100ft]	Comments
4094.00	10.240	205.860	4059.22	-361.40	-360.83	-168.11	40°07'53.092"N	104°51'24.956"W	0.34	
4180.00	9.930	204.590	4143.89	-375.04	-374.45	-174.53	40°07'52.958"N	104°51'25.039"W	0.44	
4266.00	11.270	204.750	4228.42	-389.44	-388.83	-181.13	40°07'52.816"N	104°51'25.124"W	1.56	
4351.00	10.440	202.410	4311.90	-404.12	-403.49	-187.55	40°07'52.671"N	104°51'25.207"W	1.11	
4438.00	9.000	200.760	4397.65	-417.79	-417.14	-192.96	40°07'52.536"N	104°51'25.276"W	1.69	
4523.00	10.630	205.640	4481.40	-431.10	-430.43	-198.71	40°07'52.404"N	104°51'25.350"W	2.15	
4608.00	9.790	207.400	4565.05	-444.60	-443.91	-205.43	40°07'52.271"N	104°51'25.437"W	1.05	
4695.00	9.300	206.600	4650.85	-457.48	-456.76	-211.98	40°07'52.144"N	104°51'25.521"W	0.58	
4782.00	8.980	205.230	4736.74	-469.93	-469.19	-218.03	40°07'52.021"N	104°51'25.599"W	0.44	
4869.00	7.330	209.270	4822.86	-480.93	-480.18	-223.63	40°07'51.913"N	104°51'25.671"W	2.01	
4955.00	6.110	199.780	4908.27	-490.04	-489.27	-227.87	40°07'51.823"N	104°51'25.726"W	1.91	
5042.00	4.420	193.040	4994.90	-497.67	-496.89	-230.19	40°07'51.748"N	104°51'25.756"W	2.07	
5127.00	2.990	197.280	5079.72	-502.98	-502.20	-231.59	40°07'51.695"N	104°51'25.774"W	1.71	
5212.00	1.570	204.240	5164.65	-506.16	-505.38	-232.72	40°07'51.664"N	104°51'25.788"W	1.70	
5386.00	1.410	201.370	5338.60	-510.34	-509.55	-234.48	40°07'51.623"N	104°51'25.811"W	0.10	
5731.00	1.110	188.760	5683.51	-517.60	-516.80	-236.54	40°07'51.551"N	104°51'25.837"W	0.12	
5903.00	1.050	196.240	5855.48	-520.76	-519.96	-237.23	40°07'51.520"N	104°51'25.846"W	0.09	
6076.00	0.760	218.200	6028.46	-523.19	-522.38	-238.38	40°07'51.496"N	104°51'25.861"W	0.26	
6418.00	0.730	203.620	6370.43	-526.97	-526.16	-240.66	40°07'51.458"N	104°51'25.890"W	0.06	
6589.00	0.280	168.890	6541.43	-528.38	-527.57	-241.02	40°07'51.444"N	104°51'25.895"W	0.31	
6846.00	0.630	114.420	6798.42	-529.58	-528.77	-239.61	40°07'51.433"N	104°51'25.877"W	0.20	
6933.00	1.220	356.530	6885.41	-528.85	-528.04	-239.23	40°07'51.440"N	104°51'25.872"W	1.85	
7018.00	6.000	358.480	6970.22	-523.50	-522.70	-239.40	40°07'51.493"N	104°51'25.874"W	5.62	
7103.00	13.350	357.060	7053.95	-509.25	-508.44	-240.02	40°07'51.634"N	104°51'25.882"W	8.65	
7188.00	21.590	358.420	7134.96	-483.77	-482.96	-240.96	40°07'51.885"N	104°51'25.894"W	9.71	
7275.00	30.950	358.100	7212.89	-445.33	-444.51	-242.15	40°07'52.265"N	104°51'25.909"W	10.76	
7361.00	37.880	0.040	7283.79	-396.77	-395.95	-242.86	40°07'52.745"N	104°51'25.919"W	8.16	
7446.00	45.450	0.020	7347.25	-340.30	-339.48	-242.83	40°07'53.303"N	104°51'25.918"W	8.91	
7531.00	54.880	0.520	7401.64	-275.11	-274.29	-242.51	40°07'53.947"N	104°51'25.914"W	11.10	
7616.00	61.500	0.230	7446.41	-202.92	-202.10	-242.04	40°07'54.661"N	104°51'25.908"W	7.79	
7701.00	68.890	359.470	7482.05	-125.81	-124.99	-242.26	40°07'55.423"N	104°51'25.911"W	8.73	
7786.00	79.430	2.360	7505.22	-44.17	-43.36	-240.90	40°07'56.230"N	104°51'25.893"W	12.82	
7862.00	87.090	3.660	7514.14	31.15	31.95	-236.93	40°07'56.974"N	104°51'25.842"W	10.22	
7901.00†	89.107	2.270	7515.43	70.08	70.88	-234.92	40°07'57.358"N	104°51'25.816"W	6.28	7" Casing Point
7926.00	90.400	1.380	7515.54	95.07	95.86	-234.12	40°07'57.605"N	104°51'25.806"W	6.28	
8011.00	88.520	359.390	7516.34	180.06	180.85	-233.55	40°07'58.445"N	104°51'25.799"W	3.22	
8095.00	88.490	359.040	7518.53	264.02	264.81	-234.70	40°07'59.275"N	104°51'25.814"W	0.42	
8181.00	90.150	359.860	7519.55	350.00	350.80	-235.53	40°08'00.125"N	104°51'25.824"W	2.15	
8268.00	91.020	0.160	7518.66	436.99	437.79	-235.51	40°08'00.984"N	104°51'25.824"W	1.06	
8353.00	90.430	0.110	7517.59	521.99	522.79	-235.31	40°08'01.824"N	104°51'25.822"W	0.70	
8438.00	89.750	359.440	7517.45	606.98	607.79	-235.64	40°08'02.664"N	104°51'25.826"W	1.12	
8523.00	89.630	359.960	7517.91	691.98	692.78	-236.09	40°08'03.504"N	104°51'25.832"W	0.63	
8611.00	89.600	0.290	7518.51	779.98	780.78	-235.90	40°08'04.374"N	104°51'25.829"W	0.38	
8698.00	89.170	359.790	7519.44	866.97	867.77	-235.84	40°08'05.233"N	104°51'25.828"W	0.76	
8783.00	89.350	359.480	7520.54	951.96	952.77	-236.38	40°08'06.073"N	104°51'25.835"W	0.42	

REFERENCE WELLPATH IDENTIFICATION

Operator	KERR-MCGEE OIL & GAS ONSHORE LP	Slot	SLOT#03 BARCLAY 28C-11HZ (577'FSL & 2163'FEL, SEC.14)
Area	COLORADO	Well	BARCLAY 28C-11HZ
Field	WELD COUNTY (KERR MCGEE)	Wellbore	BARCLAY 28C-11HZ AWB <17339>
Facility	SEC.14-T2N-R67W		

WELLPATH DATA (177 stations)

MD (ft)	Inclination [°]	Azimuth [°]	TVD (ft)	Vert Sect (ft)	North (ft)	East (ft)	Latitude	Longitude	DLS [°/100ft]	Comments
8870.00	89.750	359.380	7521.22	1038.95	1039.76	-237.24	40°08'06.933"N	104°51'25.847"W	0.47	
8957.00	88.800	359.940	7522.32	1125.94	1126.75	-237.76	40°08'07.793"N	104°51'25.853"W	1.27	
9130.00	88.740	359.440	7526.03	1298.89	1299.71	-238.69	40°08'09.502"N	104°51'25.865"W	0.29	
9215.00	90.090	358.830	7526.90	1383.87	1384.69	-239.98	40°08'10.342"N	104°51'25.882"W	1.74	
9300.00	92.250	359.220	7525.17	1468.83	1469.65	-241.42	40°08'11.181"N	104°51'25.900"W	2.58	
9387.00	92.830	0.160	7521.31	1555.74	1556.57	-241.89	40°08'12.040"N	104°51'25.906"W	1.27	
9473.00	92.180	1.200	7517.55	1641.65	1642.48	-240.87	40°08'12.889"N	104°51'25.893"W	1.43	
9560.00	91.960	1.520	7514.41	1728.58	1729.39	-238.81	40°08'13.748"N	104°51'25.867"W	0.45	
9644.00	91.320	1.470	7512.01	1812.52	1813.33	-236.62	40°08'14.577"N	104°51'25.839"W	0.76	
9731.00	91.720	0.980	7509.70	1899.47	1900.28	-234.76	40°08'15.437"N	104°51'25.815"W	0.73	
9816.00	91.110	2.270	7507.60	1984.42	1985.22	-232.35	40°08'16.276"N	104°51'25.784"W	1.68	
9903.00	91.600	1.840	7505.54	2071.35	2072.14	-229.23	40°08'17.135"N	104°51'25.744"W	0.75	
10074.00	90.430	1.020	7502.51	2242.28	2243.05	-224.97	40°08'18.824"N	104°51'25.689"W	0.84	
10258.00	91.100	0.770	7500.06	2426.25	2427.01	-222.09	40°08'20.642"N	104°51'25.652"W	0.39	
10442.00	91.630	0.270	7495.67	2610.19	2610.95	-220.42	40°08'22.460"N	104°51'25.630"W	0.40	
10535.00	91.410	0.260	7493.21	2703.16	2703.92	-219.99	40°08'23.378"N	104°51'25.625"W	0.24	
10627.00	91.190	1.290	7491.12	2795.13	2795.88	-218.75	40°08'24.287"N	104°51'25.609"W	1.14	
10811.00	91.530	1.080	7486.75	2979.05	2979.79	-214.94	40°08'26.105"N	104°51'25.560"W	0.22	
10904.00	90.390	1.100	7485.19	3072.02	3072.76	-213.18	40°08'27.023"N	104°51'25.537"W	1.23	
11088.00	91.630	1.410	7481.95	3255.96	3256.69	-209.15	40°08'28.841"N	104°51'25.485"W	0.69	
11181.00	90.800	1.750	7479.98	3348.91	3349.63	-206.58	40°08'29.759"N	104°51'25.452"W	0.96	
11273.00	90.980	0.450	7478.55	3440.88	3441.60	-204.82	40°08'30.668"N	104°51'25.429"W	1.43	
11365.00	91.050	0.240	7476.92	3532.87	3533.58	-204.26	40°08'31.577"N	104°51'25.422"W	0.24	
11450.00	91.110	0.070	7475.32	3617.85	3618.57	-204.03	40°08'32.417"N	104°51'25.419"W	0.21	
11537.00	91.480	0.230	7473.35	3704.83	3705.54	-203.81	40°08'33.277"N	104°51'25.416"W	0.46	
11622.00	91.660	0.560	7471.02	3789.80	3790.51	-203.22	40°08'34.116"N	104°51'25.409"W	0.44	
11708.00	91.170	0.130	7468.90	3875.77	3876.48	-202.70	40°08'34.966"N	104°51'25.402"W	0.76	
11793.00	91.230	359.840	7467.12	3960.75	3961.46	-202.72	40°08'35.806"N	104°51'25.402"W	0.35	
11878.00	91.110	359.640	7465.38	4045.73	4046.44	-203.11	40°08'36.645"N	104°51'25.407"W	0.27	
11963.00	90.740	359.700	7464.01	4130.72	4131.43	-203.60	40°08'37.485"N	104°51'25.414"W	0.44	
12050.00	90.550	359.290	7463.03	4217.71	4218.42	-204.37	40°08'38.345"N	104°51'25.424"W	0.52	
12136.00	90.770	358.990	7462.04	4303.69	4304.41	-205.66	40°08'39.195"N	104°51'25.440"W	0.43	
12221.00	90.250	359.290	7461.28	4388.67	4389.39	-206.93	40°08'40.034"N	104°51'25.457"W	0.71	
12308.00	90.710	359.190	7460.56	4475.65	4476.38	-208.09	40°08'40.894"N	104°51'25.471"W	0.54	
12395.00	90.860	358.950	7459.36	4562.63	4563.36	-209.50	40°08'41.754"N	104°51'25.490"W	0.33	
12482.00	90.090	359.290	7458.64	4649.61	4650.35	-210.83	40°08'42.613"N	104°51'25.507"W	0.97	
12653.00	89.010	358.120	7459.99	4820.54	4821.29	-214.70	40°08'44.302"N	104°51'25.557"W	0.93	
12740.00	90.490	357.440	7460.36	4907.46	4908.23	-218.07	40°08'45.161"N	104°51'25.600"W	1.87	
12825.00	91.080	358.750	7459.20	4992.39	4993.17	-220.89	40°08'46.001"N	104°51'25.636"W	1.69	
12912.00	92.800	359.680	7456.26	5079.32	5080.11	-222.09	40°08'46.860"N	104°51'25.652"W	2.25	
12996.00	92.020	0.340	7452.72	5163.25	5164.03	-222.07	40°08'47.689"N	104°51'25.652"W	1.22	
13085.00	90.890	0.700	7450.46	5252.22	5253.00	-221.26	40°08'48.569"N	104°51'25.641"W	1.33	
13170.00	90.670	0.410	7449.31	5337.21	5337.98	-220.44	40°08'49.408"N	104°51'25.631"W	0.43	
13256.00	89.380	0.240	7449.27	5423.21	5423.98	-219.95	40°08'50.258"N	104°51'25.624"W	1.51	
13341.00	90.700	0.200	7449.21	5508.20	5508.98	-219.63	40°08'51.098"N	104°51'25.620"W	1.55	

REFERENCE WELLPATH IDENTIFICATION			
Operator	KERR-MCGEE OIL & GAS ONSHORE LP	Slot	SLOT#03 BARCLAY 28C-11HZ (577'FSL & 2163'FEL, SEC.14)
Area	COLORADO	Well	BARCLAY 28C-11HZ
Field	WELD COUNTY (KERR MCGEE)	Wellbore	BARCLAY 28C-11HZ AWB <17339>
Facility	SEC.14-T2N-R67W		

WELLPATH DATA (177 stations)										
MD [ft]	Inclination [°]	Azimuth [°]	TVD [ft]	Vert Sect [ft]	North [ft]	East [ft]	Latitude	Longitude	DLS [°/100ft]	Comments
13426.00	89.290	359.880	7449.22	5593.20	5593.98	-219.57	40°08'51.938"N	104°51'25.619"W	1.70	
13511.00	88.640	0.090	7450.75	5678.19	5678.96	-219.59	40°08'52.778"N	104°51'25.620"W	0.80	
13598.00	87.870	359.780	7453.40	5765.14	5765.92	-219.69	40°08'53.637"N	104°51'25.621"W	0.95	
13683.00	91.260	359.530	7454.05	5850.13	5850.90	-220.20	40°08'54.477"N	104°51'25.628"W	4.00	
13770.00	90.460	359.920	7452.74	5937.11	5937.89	-220.62	40°08'55.337"N	104°51'25.633"W	1.02	
13856.00	89.850	359.280	7452.51	6023.11	6023.89	-221.22	40°08'56.187"N	104°51'25.641"W	1.03	
13943.00	90.800	358.780	7452.01	6110.09	6110.87	-222.69	40°08'57.046"N	104°51'25.660"W	1.23	
14029.00	89.380	359.210	7451.88	6196.06	6196.86	-224.20	40°08'57.896"N	104°51'25.679"W	1.73	
14114.00	89.600	0.180	7452.64	6281.06	6281.85	-224.65	40°08'58.736"N	104°51'25.685"W	1.17	
14199.00	90.430	0.930	7452.61	6366.05	6366.85	-223.83	40°08'59.576"N	104°51'25.674"W	1.32	
14285.00	89.540	0.860	7452.64	6452.05	6452.84	-222.48	40°09'00.425"N	104°51'25.657"W	1.04	
14372.00	90.180	0.280	7452.85	6539.04	6539.83	-221.62	40°09'01.285"N	104°51'25.646"W	0.99	
14457.00	89.970	0.780	7452.74	6624.04	6624.83	-220.83	40°09'02.125"N	104°51'25.636"W	0.64	
14542.00	89.940	1.190	7452.80	6709.03	6709.81	-219.37	40°09'02.965"N	104°51'25.617"W	0.48	
14629.00	89.840	1.920	7452.97	6796.01	6796.78	-217.01	40°09'03.824"N	104°51'25.587"W	0.85	
14716.00	89.530	1.680	7453.45	6882.97	6883.74	-214.28	40°09'04.684"N	104°51'25.551"W	0.45	
14801.00	88.390	1.150	7454.99	6967.94	6968.70	-212.18	40°09'05.523"N	104°51'25.524"W	1.48	
14886.00	88.210	1.510	7457.51	7052.88	7053.63	-210.21	40°09'06.363"N	104°51'25.499"W	0.47	
14971.00	87.590	1.020	7460.63	7137.81	7138.56	-208.33	40°09'07.202"N	104°51'25.475"W	0.93	
15057.00	89.320	0.300	7462.95	7223.77	7224.52	-207.34	40°09'08.051"N	104°51'25.462"W	2.18	
15142.00	89.690	0.300	7463.68	7308.77	7309.51	-206.90	40°09'08.891"N	104°51'25.456"W	0.44	
15313.00	90.640	359.730	7463.19	7479.76	7480.51	-206.85	40°09'10.581"N	104°51'25.456"W	0.65	
15400.00	89.810	0.990	7462.85	7566.76	7567.50	-206.30	40°09'11.441"N	104°51'25.449"W	1.73	
15485.00	89.630	0.680	7463.26	7651.75	7652.49	-205.07	40°09'12.281"N	104°51'25.433"W	0.42	
15570.00	89.560	0.820	7463.86	7736.75	7737.48	-203.95	40°09'13.120"N	104°51'25.419"W	0.18	
15743.00	90.400	0.510	7463.92	7909.74	7910.47	-201.95	40°09'14.830"N	104°51'25.393"W	0.52	
15915.00	90.580	0.080	7462.45	8081.73	8082.46	-201.06	40°09'16.530"N	104°51'25.381"W	0.27	
16000.00	91.070	359.880	7461.23	8166.72	8167.45	-201.09	40°09'17.369"N	104°51'25.382"W	0.62	
16085.00	90.490	0.800	7460.07	8251.71	8252.44	-200.59	40°09'18.209"N	104°51'25.375"W	1.28	
16172.00	89.750	0.950	7459.89	8338.71	8339.43	-199.26	40°09'19.069"N	104°51'25.358"W	0.87	
16260.00	90.830	2.130	7459.44	8426.68	8427.39	-196.89	40°09'19.938"N	104°51'25.328"W	1.82	
16347.00	90.180	1.320	7458.68	8513.64	8514.35	-194.27	40°09'20.797"N	104°51'25.294"W	1.19	
16432.00	89.290	359.540	7459.07	8598.64	8599.34	-193.64	40°09'21.637"N	104°51'25.286"W	2.34	
16519.00	90.030	359.960	7459.59	8685.63	8686.34	-194.01	40°09'22.497"N	104°51'25.291"W	0.98	
16604.00	89.080	359.270	7460.25	8770.62	8771.33	-194.59	40°09'23.337"N	104°51'25.298"W	1.38	
16689.00	89.510	359.210	7461.29	8855.61	8856.32	-195.71	40°09'24.177"N	104°51'25.313"W	0.51	
16775.00	89.480	359.000	7462.05	8941.59	8942.31	-197.06	40°09'25.027"N	104°51'25.330"W	0.25	
16860.00	89.660	358.270	7462.69	9026.55	9027.28	-199.08	40°09'25.866"N	104°51'25.356"W	0.88	
17034.00	90.220	357.970	7462.87	9200.44	9201.18	-204.79	40°09'27.585"N	104°51'25.430"W	0.37	
17206.00	91.080	356.600	7460.92	9372.20	9372.97	-212.94	40°09'29.282"N	104°51'25.534"W	0.94	
17285.00	91.450	356.540	7459.18	9451.02	9451.81	-217.66	40°09'30.062"N	104°51'25.595"W	0.47	Last BHI MWD+IFR Surveys
17339.00	91.450	356.540	7457.81	9504.89	9505.70	-220.92	40°09'30.594"N	104°51'25.637"W	0.00	Projection to Bit

REFERENCE WELLPATH IDENTIFICATION			
Operator	KERR-MCGEE OIL & GAS ONSHORE LP	Slot	SLOT#03 BARCLAY 28C-11HZ (577'FSL & 2163'FEL, SEC.14)
Area	COLORADO	Well	BARCLAY 28C-11HZ
Field	WELD COUNTY (KERR MCGEE)	Wellbore	BARCLAY 28C-11HZ AWB <17339>
Facility	SEC.14-T2N-R67W		

HOLE & CASING SECTIONS - Ref Wellbore: BARCLAY 28C-11HZ AWB <17339> Ref Wellpath: BARCLAY 28C-11HZ AWP									
String/Diameter	Start MD [ft]	End MD [ft]	Interval [ft]	Start TVD [ft]	End TVD [ft]	Start N/S [ft]	Start E/W [ft]	End N/S [ft]	End E/W [ft]
13.5in Open Hole	16.00	1099.00	1083.00	16.00	1098.94	0.00	0.00	-0.49	-4.40
9.625in Casing Surface	16.00	1105.00	1089.00	16.00	1104.94	0.00	0.00	-0.42	-4.40
8.75in Open Hole	1105.00	7911.00	6806.00	1104.94	7515.54	-0.42	-4.40	80.87	-234.55
7in Casing Intermediate	16.00	7901.00	7885.00	16.00	7515.43	0.00	0.00	70.88	-234.92
6.125in Open Hole	7901.00	17339.00	9438.00	7515.43	7457.81	70.88	-234.92	9505.70	-220.92

TARGETS								
Name	TVD [ft]	North [ft]	East [ft]	Grid East [US ft]	Grid North [US ft]	Latitude	Longitude	Shape
SEC.11-T2N-R67W SECTION LINES	-1.00	0.00	0.00	3179974.47	1291732.06	40°07'56.658"N	104°51'22.792"W	polygon
SEC.14-T2N-R67W SECTION LINES	-1.00	0.40	-60.04	3179914.43	1291732.03	40°07'56.662"N	104°51'23.565"W	polygon
BARCLAY 28C-11HZ LANDBOX	7446.00	0.00	0.00	3179974.47	1291732.06	40°07'56.658"N	104°51'22.792"W	polygon
BARCLAY 28C-11HZ BHL ON PLAT (460'FNL & 2405'FEL, SEC.11) REV-1	7448.00	9511.77	-204.85	3179700.59	1301241.68	40°09'30.654"N	104°51'25.430"W	point

WELLPATH COMPOSITION - Ref Wellbore: BARCLAY 28C-11HZ AWB <17339> Ref Wellpath: BARCLAY 28C-11HZ AWP			
Start MD [ft]	End MD [ft]	Positional Uncertainty Model	Log Name/Comment
16.00	1060.00	ISCWSA MWD, Rev. 2 (Standard)	CATHEDRAL MWD SURVEYS <62-1060>
1060.00	7862.00	ISCWSA MWD, Rev. 2, axial magnetic correction (Standard) (MagVAR IFR Wattenberg)	BHI MWD+IFR SURVEYS 8 3/4" HOLE <1175-7862>
7862.00	17285.00	ISCWSA MWD, Rev. 2, axial magnetic correction (Standard) (MagVAR IFR Wattenberg)	BHI MWD+IFR SURVEYS 6 1/8" HOLE <7926-17285>
17285.00	17339.00	Blind Drilling (std)	Projection to bit



Actual Wellpath Report
BARCLAY 28C-11HZ AWP
Page 7 of 7



REFERENCE WELLPATH IDENTIFICATION			
Operator	KERR-MCGEE OIL & GAS ONSHORE LP	Slot	SLOT#03 BARCLAY 28C-11HZ (577'FSL & 2163'FEL, SEC.14)
Area	COLORADO	Well	BARCLAY 28C-11HZ
Field	WELD COUNTY (KERR MCGEE)	Wellbore	BARCLAY 28C-11HZ AWB <17339>
Facility	SEC.14-T2N-R67W		

WELLPATH COMMENTS					
MD [ft]	Inclination [°]	Azimuth [°]	TVD [ft]	Comment	
16.00	0.000	157.800	16.00	Tie-On	
62.00	0.100	157.800	62.00	Begin CATHEDRAL MWD Surveys	
1060.00	0.700	9.300	1059.95	Tie-Into CATHEDRAL MWD Surveys	
1175.00	0.680	350.110	1174.94	Begin BHI MWD+IFR Surveys	
7901.00	89.107	2.270	7515.43	7" Casing Point	
17285.00	91.450	356.540	7459.18	Last BHI MWD+IFR Surveys	
17339.00	91.450	356.540	7457.81	Projection to Bit	