

SOUTHWESTERN ENERGY PRODUCTION COMPANY

MULTI-WELL PLAN FOR

NORTH HAYDEN 7-88 #2-26H ON EXISTING

NORTH HAYDEN #1-26

SECTION 26, T7N, R88W, 6th P.M.

SE 1/4 NE 1/4

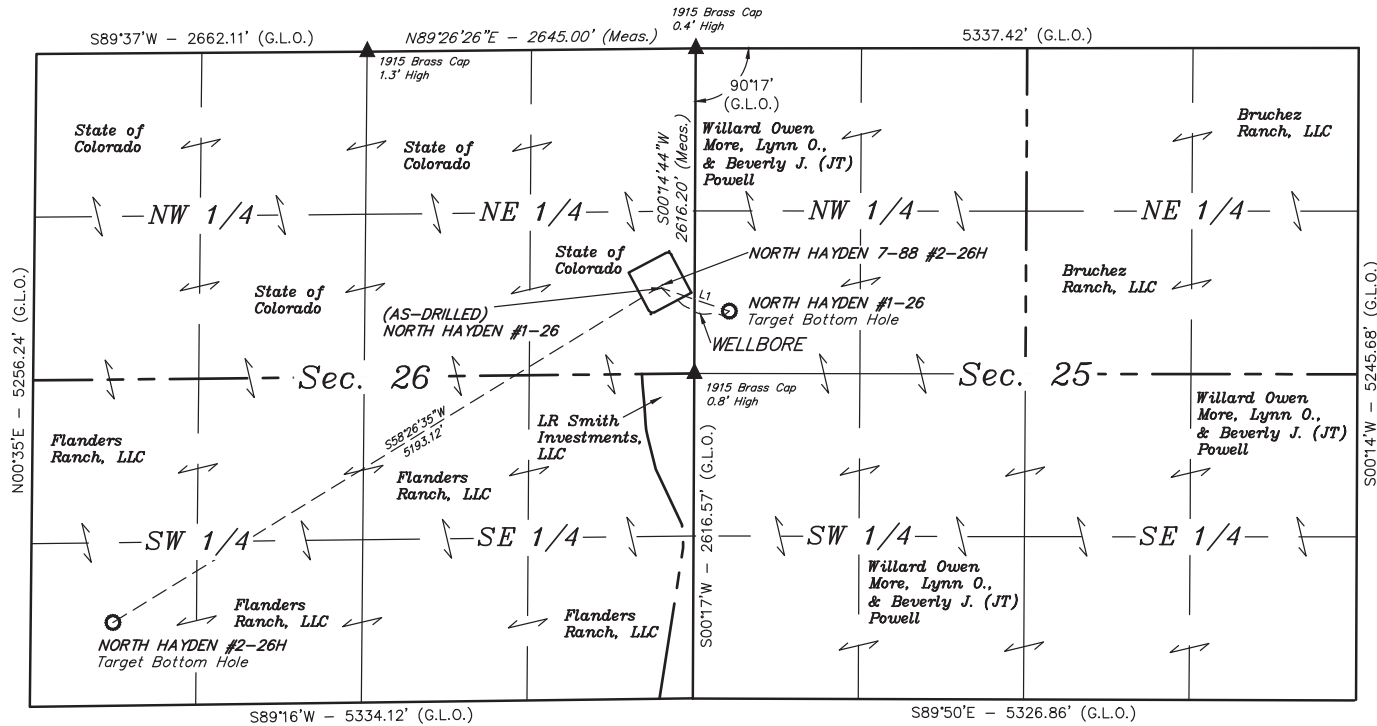
FIGURE #6

SCALE: 1" = 1000'

DATE: 05-12-15

DRAWN BY: T.B.

REVISED: 06-08-15 T.B.



NOTE:
THE TARGET BOTTOM HOLE FOR NORTH HAYDEN
#1-26 BEARS S71°18'51"E - 575.88' FROM THE
AS-DRILLED WELL HEAD.

DRILLING PATH APPROVED BY SOUTHWESTERN
PRODUCTION CORP.

LINE TABLE

LINE	DIRECTION	LENGTH
L1	S71°18'51"E	575.88'

LEGEND:

- └─┘ = 90° SYMBOL
- = PROPOSED WELL HEAD.
- ▲ = SECTION CORNERS LOCATED.