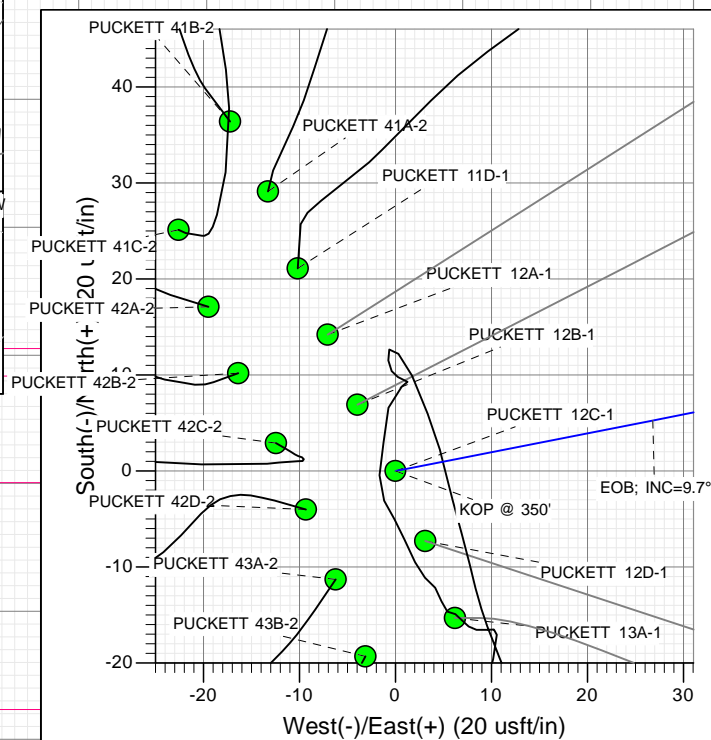
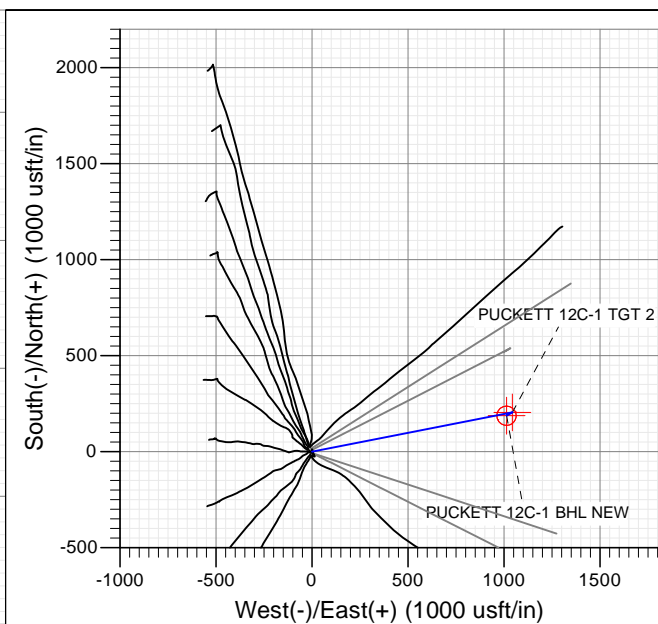
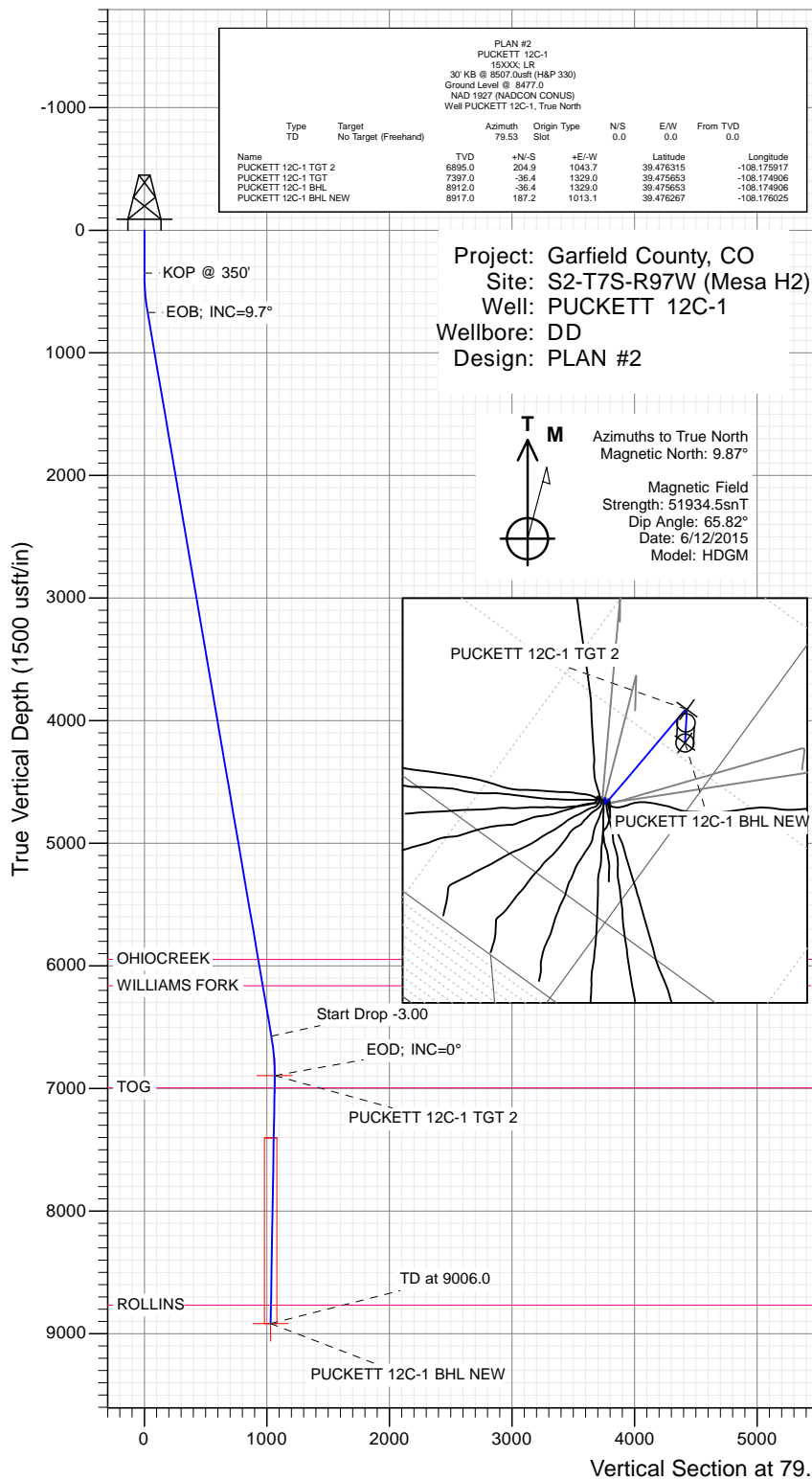




SECTION DETAILS

Sec	MD	Inc	Azi	TVD	+N/-S	+E/-W	Dleg	TFace	VSec	Target	Annotation
1	0.0	0.00	0.00	0.0	0.0	0.0	0.00	0.00	0.0		
2	350.0	0.00	0.00	350.0	0.0	0.0	0.00	0.00	0.0		KOP @ 350'
3	673.4	9.70	78.89	671.9	5.3	26.8	3.00	78.89	27.3		EOB; INC=9.7°
4	6660.3	9.70	78.89	6573.1	199.6	1016.9	0.00	0.00	1036.2		Start Drop -3.00
5	6983.7	0.00	0.00	6895.0	204.9	1043.7	3.00	180.00	1063.5	PUCKETT 12C-1 TGT 2	EOD; INC=0°
6	7086.3	1.03	240.00	6997.6	204.4	1042.9	1.00	240.00	1062.7		
7	9006.0	1.03	240.00	8917.0	187.2	1013.1	0.00	0.00	1030.3	PUCKETT 12C-1 BHL NEW	TD at 9006.0



WELL DETAILS: PUCKETT 12C-1

+N/-S +E/-W Northing Easting Latitude Longitude
0.0 0.0 609314.94 1243684.20 39.475753 -108.179614

Ground Level: 8477.0

CATHEDRAL



Planning Report

Database:	USA EDM 5000 Multi Users DB	Local Co-ordinate Reference:	Well PUCKETT 12C-1
Company:	Caerus Oil & Gas (NAD 27)	TVD Reference:	30' KB @ 8507.0usft (H&P 330)
Project:	Garfield County, CO	MD Reference:	30' KB @ 8507.0usft (H&P 330)
Site:	S2-T7S-R97W (Mesa H2)	North Reference:	True
Well:	PUCKETT 12C-1	Survey Calculation Method:	Minimum Curvature
Wellbore:	DD		
Design:	PLAN #2		

Project	Garfield County, CO		
Map System:	US State Plane 1927 (Exact solution)	System Datum:	Mean Sea Level
Geo Datum:	NAD 1927 (NADCON CONUS)		
Map Zone:	Colorado Central 502		

Site		S2-T7S-R97W (Mesa H2)			
Site Position:		Northing:	609,295.74 usft	Latitude:	39.475700
From:	Lat/Long	Easting:	1,243,680.53 usft	Longitude:	-108.179625
Position Uncertainty:	0.0 usft	Slot Radius:	13-3/16 "	Grid Convergence:	-1.69 °

Well	PUCKETT 12C-1					
Well Position	+N/-S	0.0 usft	Northing:	609,314.94 usft	Latitude:	39.475753
	+E/-W	0.0 usft	Easting:	1,243,684.20 usft	Longitude:	-108.179614
Position Uncertainty		0.0 usft	Wellhead Elevation:	0.0 usft	Ground Level:	8,477.0 usft

Wellbore	DD				
Magnetics	Model Name	Sample Date	Declination (°)	Dip Angle (°)	Field Strength (nT)
	HDGM	6/12/2015	9.87	65.82	51,935

Design	PLAN #2			
Audit Notes:				
Version:	Phase:	PLAN	Tie On Depth:	0.0
Vertical Section:	Depth From (TVD) (usft)	+N/-S (usft)	+E/-W (usft)	Direction (°)
	0.0	0.0	0.0	79.53

Plan Sections										
Measured Depth (usft)	Inclination (°)	Azimuth (°)	Vertical Depth (usft)	+N/-S (usft)	+E/-W (usft)	Dogleg Rate (°/100usft)	Build Rate (°/100usft)	Turn Rate (°/100usft)	TFO (°)	Target
0.0	0.00	0.00	0.0	0.0	0.0	0.00	0.00	0.00	0.00	
350.0	0.00	0.00	350.0	0.0	0.0	0.00	0.00	0.00	0.00	
673.4	9.70	78.89	671.9	5.3	26.8	3.00	3.00	0.00	78.89	
6,660.3	9.70	78.89	6,573.1	199.6	1,016.9	0.00	0.00	0.00	0.00	
6,983.7	0.00	0.00	6,895.0	204.9	1,043.7	3.00	-3.00	0.00	180.00	PUCKETT 12C-1 TG1
7,086.3	1.03	240.00	6,997.6	204.4	1,042.9	1.00	1.00	-116.96	240.00	
9,006.0	1.03	240.00	8,917.0	187.2	1,013.1	0.00	0.00	0.00	0.00	PUCKETT 12C-1 BHL

Planning Report

Database:	USA EDM 5000 Multi Users DB	Local Co-ordinate Reference:	Well PUCKETT 12C-1
Company:	Caerus Oil & Gas (NAD 27)	TVD Reference:	30' KB @ 8507.0usft (H&P 330)
Project:	Garfield County, CO	MD Reference:	30' KB @ 8507.0usft (H&P 330)
Site:	S2-T7S-R97W (Mesa H2)	North Reference:	True
Well:	PUCKETT 12C-1	Survey Calculation Method:	Minimum Curvature
Wellbore:	DD		
Design:	PLAN #2		

Planned Survey

Measured Depth (usft)	Inclination (°)	Azimuth (°)	Vertical Depth (usft)	+N/-S (usft)	+E/-W (usft)	Vertical Section (usft)	Dogleg Rate (°/100usft)	Build Rate (°/100u)	Comments / Formations
0.0	0.00	0.00	0.0	0.0	0.0	0.0	0.00	0.00	
100.0	0.00	0.00	100.0	0.0	0.0	0.0	0.00	0.00	
200.0	0.00	0.00	200.0	0.0	0.0	0.0	0.00	0.00	
300.0	0.00	0.00	300.0	0.0	0.0	0.0	0.00	0.00	
350.0	0.00	0.00	350.0	0.0	0.0	0.0	0.00	0.00	KOP @ 350'
400.0	1.50	78.89	400.0	0.1	0.6	0.7	3.00	3.00	
500.0	4.50	78.89	499.8	1.1	5.8	5.9	3.00	3.00	
600.0	7.50	78.89	599.3	3.1	16.0	16.3	3.00	3.00	
673.4	9.70	78.89	671.9	5.3	26.8	27.3	3.00	3.00	EOB; INC=9.7°
700.0	9.70	78.89	698.1	6.1	31.2	31.8	0.00	0.00	
800.0	9.70	78.89	796.6	9.4	47.7	48.6	0.00	0.00	
900.0	9.70	78.89	895.2	12.6	64.3	65.5	0.00	0.00	
1,000.0	9.70	78.89	993.8	15.9	80.8	82.4	0.00	0.00	
1,100.0	9.70	78.89	1,092.4	19.1	97.4	99.2	0.00	0.00	
1,200.0	9.70	78.89	1,190.9	22.4	113.9	116.1	0.00	0.00	
1,300.0	9.70	78.89	1,289.5	25.6	130.4	132.9	0.00	0.00	
1,400.0	9.70	78.89	1,388.1	28.9	147.0	149.8	0.00	0.00	
1,500.0	9.70	78.89	1,486.6	32.1	163.5	166.6	0.00	0.00	
1,600.0	9.70	78.89	1,585.2	35.3	180.0	183.5	0.00	0.00	
1,700.0	9.70	78.89	1,683.8	38.6	196.6	200.3	0.00	0.00	
1,800.0	9.70	78.89	1,782.3	41.8	213.1	217.2	0.00	0.00	
1,900.0	9.70	78.89	1,880.9	45.1	229.7	234.0	0.00	0.00	
2,000.0	9.70	78.89	1,979.5	48.3	246.2	250.9	0.00	0.00	
2,100.0	9.70	78.89	2,078.1	51.6	262.7	267.7	0.00	0.00	
2,200.0	9.70	78.89	2,176.6	54.8	279.3	284.6	0.00	0.00	
2,300.0	9.70	78.89	2,275.2	58.1	295.8	301.4	0.00	0.00	
2,400.0	9.70	78.89	2,373.8	61.3	312.3	318.3	0.00	0.00	
2,500.0	9.70	78.89	2,472.3	64.6	328.9	335.1	0.00	0.00	
2,600.0	9.70	78.89	2,570.9	67.8	345.4	352.0	0.00	0.00	
2,700.0	9.70	78.89	2,669.5	71.1	362.0	368.8	0.00	0.00	
2,800.0	9.70	78.89	2,768.0	74.3	378.5	385.7	0.00	0.00	
2,900.0	9.70	78.89	2,866.6	77.5	395.0	402.5	0.00	0.00	
3,000.0	9.70	78.89	2,965.2	80.8	411.6	419.4	0.00	0.00	
3,100.0	9.70	78.89	3,063.7	84.0	428.1	436.2	0.00	0.00	
3,200.0	9.70	78.89	3,162.3	87.3	444.6	453.1	0.00	0.00	
3,300.0	9.70	78.89	3,260.9	90.5	461.2	470.0	0.00	0.00	
3,400.0	9.70	78.89	3,359.5	93.8	477.7	486.8	0.00	0.00	
3,500.0	9.70	78.89	3,458.0	97.0	494.3	503.7	0.00	0.00	
3,600.0	9.70	78.89	3,556.6	100.3	510.8	520.5	0.00	0.00	
3,700.0	9.70	78.89	3,655.2	103.5	527.3	537.4	0.00	0.00	
3,800.0	9.70	78.89	3,753.7	106.8	543.9	554.2	0.00	0.00	
3,900.0	9.70	78.89	3,852.3	110.0	560.4	571.1	0.00	0.00	
4,000.0	9.70	78.89	3,950.9	113.3	576.9	587.9	0.00	0.00	
4,100.0	9.70	78.89	4,049.4	116.5	593.5	604.8	0.00	0.00	
4,200.0	9.70	78.89	4,148.0	119.8	610.0	621.6	0.00	0.00	
4,300.0	9.70	78.89	4,246.6	123.0	626.6	638.5	0.00	0.00	
4,400.0	9.70	78.89	4,345.2	126.2	643.1	655.3	0.00	0.00	
4,500.0	9.70	78.89	4,443.7	129.5	659.6	672.2	0.00	0.00	
4,600.0	9.70	78.89	4,542.3	132.7	676.2	689.0	0.00	0.00	
4,700.0	9.70	78.89	4,640.9	136.0	692.7	705.9	0.00	0.00	
4,800.0	9.70	78.89	4,739.4	139.2	709.2	722.7	0.00	0.00	
4,900.0	9.70	78.89	4,838.0	142.5	725.8	739.6	0.00	0.00	

Planning Report

Database:	USA EDM 5000 Multi Users DB	Local Co-ordinate Reference:	Well PUCKETT 12C-1
Company:	Caerus Oil & Gas (NAD 27)	TVD Reference:	30' KB @ 8507.0usft (H&P 330)
Project:	Garfield County, CO	MD Reference:	30' KB @ 8507.0usft (H&P 330)
Site:	S2-T7S-R97W (Mesa H2)	North Reference:	True
Well:	PUCKETT 12C-1	Survey Calculation Method:	Minimum Curvature
Wellbore:	DD		
Design:	PLAN #2		

Planned Survey									
Measured Depth (usft)	Inclination (°)	Azimuth (°)	Vertical Depth (usft)	+N/-S (usft)	+E/-W (usft)	Vertical Section (usft)	Dogleg Rate (°/100usft)	Build Rate (°/100u)	Comments / Formations
5,000.0	9.70	78.89	4,936.6	145.7	742.3	756.4	0.00	0.00	
5,100.0	9.70	78.89	5,035.1	149.0	758.9	773.3	0.00	0.00	
5,200.0	9.70	78.89	5,133.7	152.2	775.4	790.1	0.00	0.00	
5,300.0	9.70	78.89	5,232.3	155.5	791.9	807.0	0.00	0.00	
5,400.0	9.70	78.89	5,330.8	158.7	808.5	823.8	0.00	0.00	
5,500.0	9.70	78.89	5,429.4	162.0	825.0	840.7	0.00	0.00	
5,600.0	9.70	78.89	5,528.0	165.2	841.5	857.5	0.00	0.00	
5,700.0	9.70	78.89	5,626.6	168.5	858.1	874.4	0.00	0.00	
5,800.0	9.70	78.89	5,725.1	171.7	874.6	891.3	0.00	0.00	
5,900.0	9.70	78.89	5,823.7	174.9	891.2	908.1	0.00	0.00	
6,000.0	9.70	78.89	5,922.3	178.2	907.7	925.0	0.00	0.00	
6,025.1	9.70	78.89	5,947.0	179.0	911.8	929.2	0.00	0.00	OHIOCREEK
6,100.0	9.70	78.89	6,020.8	181.4	924.2	941.8	0.00	0.00	
6,200.0	9.70	78.89	6,119.4	184.7	940.8	958.7	0.00	0.00	
6,243.2	9.70	78.89	6,162.0	186.1	947.9	965.9	0.00	0.00	WILLIAMS FORK
6,300.0	9.70	78.89	6,218.0	187.9	957.3	975.5	0.00	0.00	
6,400.0	9.70	78.89	6,316.5	191.2	973.8	992.4	0.00	0.00	
6,500.0	9.70	78.89	6,415.1	194.4	990.4	1,009.2	0.00	0.00	
6,600.0	9.70	78.89	6,513.7	197.7	1,006.9	1,026.1	0.00	0.00	
6,660.3	9.70	78.89	6,573.1	199.6	1,016.9	1,036.2	0.00	0.00	Start Drop -3.00
6,700.0	8.51	78.89	6,612.3	200.8	1,023.1	1,042.5	3.00	-3.00	
6,800.0	5.51	78.89	6,711.6	203.2	1,035.0	1,054.7	3.00	-3.00	
6,900.0	2.51	78.89	6,811.3	204.5	1,041.9	1,061.7	3.00	-3.00	
6,983.7	0.00	0.00	6,895.0	204.9	1,043.7	1,063.5	3.00	-3.00	EOD; INC=0°
7,000.0	0.16	240.00	6,911.3	204.9	1,043.7	1,063.5	1.00	1.00	
7,083.7	1.00	240.00	6,995.0	204.5	1,042.9	1,062.7	1.00	1.00	TOG
7,086.3	1.03	240.00	6,997.6	204.4	1,042.9	1,062.7	1.00	1.00	
7,100.0	1.03	240.00	7,011.3	204.3	1,042.7	1,062.5	0.00	0.00	
7,200.0	1.03	240.00	7,111.3	203.4	1,041.1	1,060.8	0.00	0.00	
7,300.0	1.03	240.00	7,211.2	202.5	1,039.6	1,059.1	0.00	0.00	
7,400.0	1.03	240.00	7,311.2	201.6	1,038.0	1,057.4	0.00	0.00	
7,500.0	1.03	240.00	7,411.2	200.7	1,036.5	1,055.7	0.00	0.00	
7,600.0	1.03	240.00	7,511.2	199.8	1,034.9	1,054.0	0.00	0.00	
7,700.0	1.03	240.00	7,611.2	198.9	1,033.4	1,052.3	0.00	0.00	
7,800.0	1.03	240.00	7,711.2	198.0	1,031.8	1,050.6	0.00	0.00	
7,900.0	1.03	240.00	7,811.1	197.1	1,030.3	1,049.0	0.00	0.00	
8,000.0	1.03	240.00	7,911.1	196.3	1,028.7	1,047.3	0.00	0.00	
8,100.0	1.03	240.00	8,011.1	195.4	1,027.2	1,045.6	0.00	0.00	
8,200.0	1.03	240.00	8,111.1	194.5	1,025.6	1,043.9	0.00	0.00	
8,300.0	1.03	240.00	8,211.1	193.6	1,024.1	1,042.2	0.00	0.00	
8,400.0	1.03	240.00	8,311.1	192.7	1,022.5	1,040.5	0.00	0.00	
8,500.0	1.03	240.00	8,411.0	191.8	1,021.0	1,038.8	0.00	0.00	
8,600.0	1.03	240.00	8,511.0	190.9	1,019.4	1,037.1	0.00	0.00	
8,700.0	1.03	240.00	8,611.0	190.0	1,017.9	1,035.5	0.00	0.00	
8,800.0	1.03	240.00	8,711.0	189.1	1,016.3	1,033.8	0.00	0.00	
8,856.0	1.03	240.00	8,767.0	188.6	1,015.5	1,032.8	0.00	0.00	ROLLINS
8,900.0	1.03	240.00	8,811.0	188.2	1,014.8	1,032.1	0.00	0.00	
9,000.0	1.03	240.00	8,911.0	187.3	1,013.2	1,030.4	0.00	0.00	
9,006.0	1.03	240.00	8,917.0	187.2	1,013.1	1,030.3	0.00	0.00	TD at 9006.0

Planning Report

Database:	USA EDM 5000 Multi Users DB	Local Co-ordinate Reference:	Well PUCKETT 12C-1
Company:	Caerus Oil & Gas (NAD 27)	TVD Reference:	30' KB @ 8507.0usft (H&P 330)
Project:	Garfield County, CO	MD Reference:	30' KB @ 8507.0usft (H&P 330)
Site:	S2-T7S-R97W (Mesa H2)	North Reference:	True
Well:	PUCKETT 12C-1	Survey Calculation Method:	Minimum Curvature
Wellbore:	DD		
Design:	PLAN #2		

Targets									
Target Name									
- hit/miss target	Dip Angle	Dip Dir.	TVD	+N/-S	+E/-W	Northing	Easting	Latitude	Longitude
- Shape	(°)	(°)	(usft)	(usft)	(usft)	(usft)	(usft)		
PUCKETT 12C-1 BHL N	0.00	0.00	8,917.0	187.2	1,013.1	609,472.23	1,244,702.41	39.476267	-108.176025
- plan hits target center									
- Circle (radius 50.0)									
PUCKETT 12C-1 BHL	0.00	0.00	8,912.0	-36.4	1,329.0	609,239.39	1,245,011.57	39.475653	-108.174906
- plan misses target center by 387.0usft at 8998.1usft MD (8909.1 TVD, 187.3 N, 1013.3 E)									
- Circle (radius 50.0)									
PUCKETT 12C-1 TGT 2	0.00	0.00	6,895.0	204.9	1,043.7	609,488.97	1,244,733.48	39.476315	-108.175917
- plan hits target center									
- Point									
PUCKETT 12C-1 TGT	0.00	0.00	7,397.0	-36.4	1,329.0	609,239.39	1,245,011.57	39.475653	-108.174906
- plan misses target center by 376.5usft at 7483.4usft MD (7394.6 TVD, 200.9 N, 1036.7 E)									
- Point									

Formations					
Measured Depth	Vertical Depth	Name	Lithology	Dip	Dip Direction
(usft)	(usft)			(°)	(°)
6,025.1	5,947.0	OHIOCREEK		0.00	
6,243.2	6,162.0	WILLIAMS FORK		0.00	
7,083.7	6,995.0	TOG		0.00	
8,856.0	8,767.0	ROLLINS		0.00	

Plan Annotations				
Measured Depth	Vertical Depth	Local Coordinates		Comment
(usft)	(usft)	+N/-S (usft)	+E/-W (usft)	
350.0	350.0	0.0	0.0	KOP @ 350'
673.4	671.9	5.3	26.8	EOB; INC=9.7°
6,660.3	6,573.1	199.6	1,016.9	Start Drop -3.00
6,983.7	6,895.0	204.9	1,043.7	EOD; INC=0°
9,006.0	8,917.0	204.4	1,042.9	TD at 9006.0