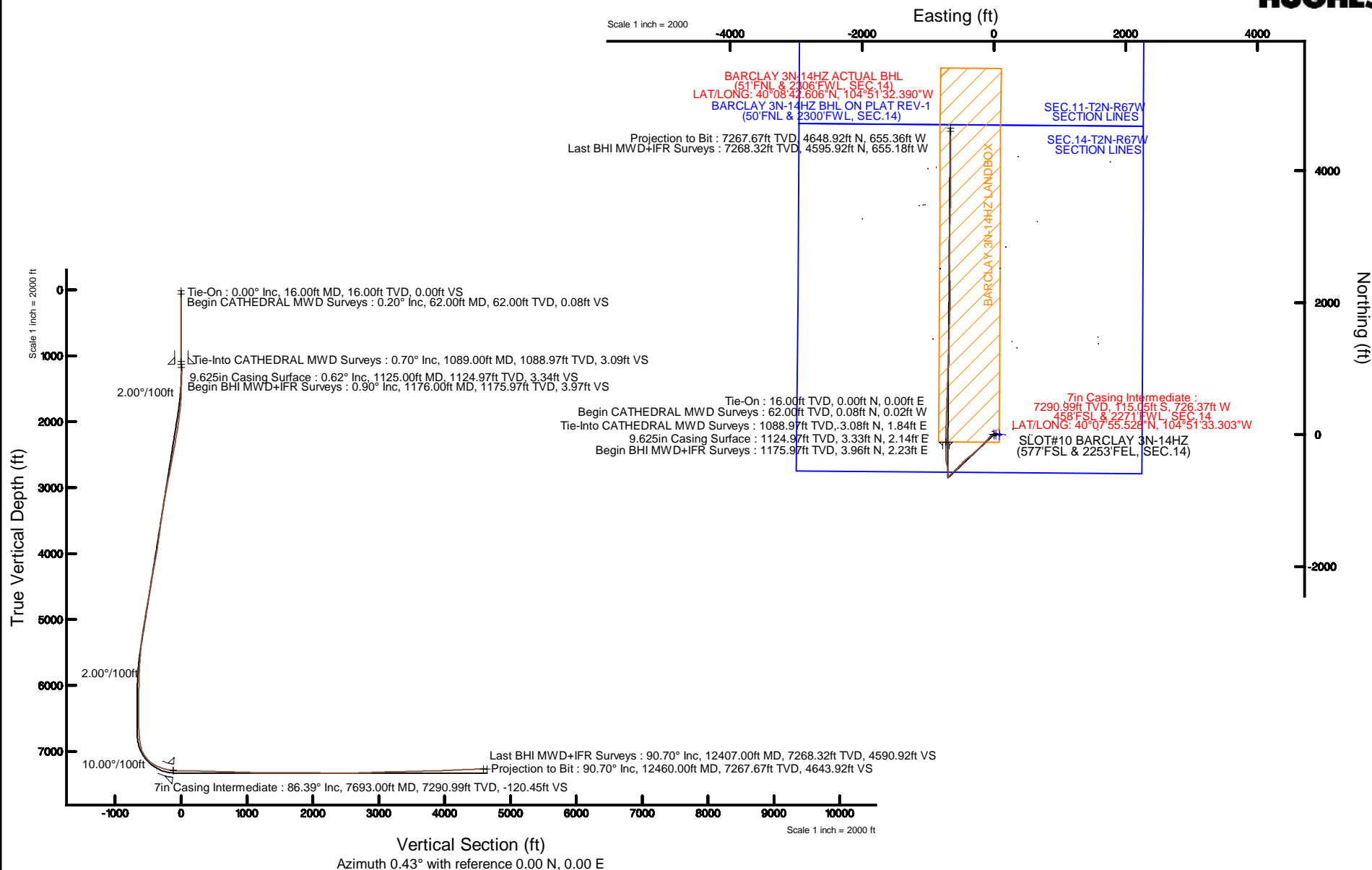


KERR-MCGEE OIL & GAS ONSHORE LP

Location: COLORADO Slot: SLOT#10 BARCLAY 3N-14HZ (577'FSL & 2253'FEL, SEC.14)
 Field: WELD COUNTY (KERR MCGEE) Well: BARCLAY 3N-14HZ
 Facility: SEC.14-T2N-R67W Wellbore: BARCLAY 3N-14HZ PWB

Plot reference wellpath is BARCLAY 3N-14HZ (REV-A.0) PWP

True vertical depths are referenced to XTREME 23 (16'KB) (RKB)	Grid System: NAD83 / Lambert Colorado SP, Northern Zone (501), US feet
Measured depths are referenced to XTREME 23 (16'KB) (RKB)	North Reference: True north
XTREME 23 (16'KB) to Mean Sea Level: 4948 feet	Scale: True distance
Mean Sea Level to Mud line (At Slot SLOT#10 BARCLAY 3N-14HZ (577'FSL & 2253'FEL, SEC.14)): 0 feet	Depths are in feet
Coordinates are in feet referenced to Slot	Created by: preccain on 3/17/2015



Actual Wellpath Report

BARCLAY 3N-14HZ AWP

Page 1 of 6

REFERENCE WELLPATH IDENTIFICATION

Operator	KERR-MCGEE OIL & GAS ONSHORE LP	Slot	SLOT#10 BARCLAY 3N-14HZ (577'FSL & 2253'FEL, SEC.14)
Area	COLORADO	Well	BARCLAY 3N-14HZ
Field	WELD COUNTY (KERR MCGEE)	Wellbore	BARCLAY 3N-14HZ AWB <12460>
Facility	SEC.14-T2N-R67W		

REPORT SETUP INFORMATION

Projection System	NAD83 / Lambert Colorado SP, Northern Zone (501), US feet	Software System	WellArchitect® 4.1.1
North Reference	True	User	Precain
Scale	0.999959	Report Generated	3/17/2015 at 12:37:01 PM
Convergence at slot	0.42° East	Database/Source file	WellArchitectDB/BARCLAY_3N-14HZ_AWB__12460_.xml

WELLPATH LOCATION

	Local coordinates		Grid coordinates		Geographic coordinates	
	North[ft]	East[ft]	Easting[US ft]	Northing[US ft]	Latitude	Longitude
Slot Location	0.30	-29.98	3179884.44	1291732.12	40°07'56.665"N	104°51'23.951"W
Facility Reference Pt			3179914.43	1291732.03	40°07'56.662"N	104°51'23.565"W
Field Reference Pt			3197771.84	1268891.29	40°04'09.600"N	104°47'36.000"W

WELLPATH DATUM

Calculation method	Minimum curvature	XTREME 23 (16'KB) (RKB) to Facility Vertical Datum	4948.00ft
Horizontal Reference Pt	Slot	XTREME 23 (16'KB) (RKB) to Mean Sea Level	4948.00ft
Vertical Reference Pt	XTREME 23 (16'KB) (RKB)	XTREME 23 (16'KB) (RKB) to Mud Line at Slot (SLOT#10 BARCLAY 3N-14HZ (577'FSL & 2253'FEL, SEC.14))	4948.00ft
MD Reference Pt	XTREME 23 (16'KB) (RKB)	Section Origin	N 0.00, E 0.00 ft
Field Vertical Reference	Mean Sea Level	Section Azimuth	0.43°

Actual Wellpath Report

BARCLAY 3N-14HZ AWP

Page 2 of 6

REFERENCE WELLPATH IDENTIFICATION

Operator	KERR-MCGEE OIL & GAS ONSHORE LP	Slot	SLOT#10 BARCLAY 3N-14HZ (577'FSL & 2253'FEL, SEC.14)
Area	COLORADO	Well	BARCLAY 3N-14HZ
Field	WELD COUNTY (KERR MCGEE)	Wellbore	BARCLAY 3N-14HZ AWB <12460>
Facility	SEC.14-T2N-R67W		

WELLPATH DATA (140 stations) † = interpolated/extrapolated station

MD [ft]	Inclination [°]	Azimuth [°]	TVD [ft]	Vert Sect [ft]	North [ft]	East [ft]	Latitude	Longitude	DLS [°/100ft]	Comments
0.00†	0.000	343.200	0.00	0.00	0.00	0.00	40°07'56.665"N	104°51'23.951"W	0.00	
16.00	0.000	343.200	16.00	0.00	0.00	0.00	40°07'56.665"N	104°51'23.951"W	0.00	Tie-On
62.00	0.200	343.200	62.00	0.08	0.08	-0.02	40°07'56.666"N	104°51'23.951"W	0.43	Begin CATHEDRAL MWD Surveys
172.00	0.130	341.900	172.00	0.38	0.38	-0.12	40°07'56.669"N	104°51'23.953"W	0.06	
250.00	0.200	279.900	250.00	0.48	0.49	-0.28	40°07'56.670"N	104°51'23.955"W	0.23	
331.00	0.100	239.200	331.00	0.47	0.47	-0.48	40°07'56.670"N	104°51'23.957"W	0.17	
411.00	0.300	313.500	411.00	0.58	0.58	-0.69	40°07'56.671"N	104°51'23.960"W	0.36	
491.00	0.200	278.400	491.00	0.74	0.75	-0.98	40°07'56.672"N	104°51'23.964"W	0.22	
571.00	0.400	312.100	571.00	0.95	0.96	-1.33	40°07'56.674"N	104°51'23.968"W	0.32	
651.00	0.300	315.200	651.00	1.28	1.29	-1.68	40°07'56.678"N	104°51'23.973"W	0.13	
731.00	0.700	54.000	730.99	1.72	1.73	-1.43	40°07'56.682"N	104°51'23.969"W	1.00	
811.00	0.500	65.800	810.99	2.15	2.16	-0.72	40°07'56.686"N	104°51'23.960"W	0.29	
891.00	0.400	59.500	890.99	2.44	2.44	-0.16	40°07'56.689"N	104°51'23.953"W	0.14	
971.00	0.700	75.200	970.98	2.71	2.71	0.55	40°07'56.692"N	104°51'23.944"W	0.42	
1051.00	0.600	75.700	1050.98	2.95	2.94	1.43	40°07'56.694"N	104°51'23.933"W	0.13	
1089.00	0.700	67.300	1088.97	3.09	3.08	1.84	40°07'56.695"N	104°51'23.927"W	0.36	Tie-Into CATHEDRAL MWD Surveys
1176.00	0.900	351.500	1175.97	3.97	3.96	2.23	40°07'56.704"N	104°51'23.922"W	1.14	Begin BHI MWD+IFR Surveys
1270.00	0.800	289.000	1269.96	4.91	4.90	1.50	40°07'56.713"N	104°51'23.932"W	0.94	
1363.00	2.200	255.300	1362.93	4.65	4.66	-0.84	40°07'56.711"N	104°51'23.962"W	1.72	
1457.00	3.300	246.700	1456.82	3.09	3.13	-5.07	40°07'56.696"N	104°51'24.016"W	1.25	
1554.00	4.700	246.000	1553.58	0.33	0.41	-11.27	40°07'56.669"N	104°51'24.096"W	1.44	
1648.00	7.100	253.200	1647.08	-2.99	-2.84	-20.35	40°07'56.637"N	104°51'24.213"W	2.67	
1741.00	7.800	228.300	1739.31	-8.92	-8.70	-30.57	40°07'56.579"N	104°51'24.345"W	3.52	
1833.00	9.200	225.700	1830.30	-18.29	-17.99	-40.49	40°07'56.487"N	104°51'24.472"W	1.58	
1927.00	9.700	225.200	1923.03	-29.20	-28.82	-51.49	40°07'56.380"N	104°51'24.614"W	0.54	
2021.00	11.000	223.000	2015.49	-41.42	-40.95	-63.22	40°07'56.260"N	104°51'24.765"W	1.45	
2114.00	11.600	220.500	2106.69	-55.11	-54.55	-75.35	40°07'56.126"N	104°51'24.921"W	0.83	
2207.00	12.000	219.800	2197.73	-69.74	-69.09	-87.61	40°07'55.982"N	104°51'25.079"W	0.46	
2300.00	13.500	224.700	2288.43	-84.99	-84.24	-101.43	40°07'55.833"N	104°51'25.257"W	1.99	
2394.00	15.200	225.100	2379.50	-101.61	-100.73	-117.88	40°07'55.670"N	104°51'25.469"W	1.81	
2487.00	14.600	221.500	2469.37	-119.11	-118.12	-134.28	40°07'55.498"N	104°51'25.680"W	1.19	
2579.00	13.600	222.200	2558.60	-135.92	-134.82	-149.23	40°07'55.333"N	104°51'25.872"W	1.10	
2670.00	13.700	226.600	2647.03	-151.36	-150.15	-164.25	40°07'55.181"N	104°51'26.066"W	1.15	
2759.00	15.000	223.100	2733.25	-167.13	-165.80	-179.78	40°07'55.027"N	104°51'26.266"W	1.76	
2849.00	15.300	223.700	2820.13	-184.34	-182.89	-195.94	40°07'54.858"N	104°51'26.474"W	0.38	
2934.00	15.000	223.500	2902.17	-200.54	-198.98	-211.26	40°07'54.699"N	104°51'26.671"W	0.36	
3019.00	15.000	224.500	2984.28	-216.48	-214.80	-226.54	40°07'54.542"N	104°51'26.868"W	0.30	
3106.00	15.000	225.900	3068.31	-232.46	-230.67	-242.52	40°07'54.386"N	104°51'27.073"W	0.42	
3192.00	13.900	228.000	3151.59	-247.24	-245.32	-258.19	40°07'54.241"N	104°51'27.275"W	1.42	
3277.00	14.800	230.300	3233.94	-261.12	-259.09	-274.13	40°07'54.105"N	104°51'27.480"W	1.25	
3366.00	14.200	230.600	3320.10	-275.44	-273.28	-291.31	40°07'53.964"N	104°51'27.701"W	0.68	
3453.00	13.100	226.200	3404.65	-289.15	-286.88	-306.67	40°07'53.830"N	104°51'27.899"W	1.74	
3538.00	13.100	228.400	3487.43	-302.32	-299.94	-320.83	40°07'53.701"N	104°51'28.081"W	0.59	
3623.00	13.100	235.200	3570.23	-314.32	-311.83	-335.94	40°07'53.583"N	104°51'28.276"W	1.81	
3710.00	12.700	239.700	3655.03	-324.90	-322.29	-352.30	40°07'53.480"N	104°51'28.487"W	1.24	

Actual Wellpath Report

BARCLAY 3N-14HZ AWP

Page 3 of 6

REFERENCE WELLPATH IDENTIFICATION

Operator	KERR-MCGEE OIL & GAS ONSHORE LP	Slot	SLOT#10 BARCLAY 3N-14HZ (577'FSL & 2253'FEL, SEC.14)
Area	COLORADO	Well	BARCLAY 3N-14HZ
Field	WELD COUNTY (KERR MCGEE)	Wellbore	BARCLAY 3N-14HZ AWB <12460>
Facility	SEC.14-T2N-R67W		

WELLPATH DATA (140 stations) † = interpolated/extrapolated station

MD [ft]	Inclination [°]	Azimuth [°]	TVD [ft]	Vert Sect [ft]	North [ft]	East [ft]	Latitude	Longitude	DLS [°/100ft]	Comments
3797.00	12.400	233.300	3739.96	-335.42	-332.69	-368.04	40°07'53.377"N	104°51'28.689"W	1.63	
3883.00	12.700	231.400	3823.90	-346.95	-344.11	-382.83	40°07'53.264"N	104°51'28.880"W	0.59	
3967.00	13.700	227.600	3905.69	-359.52	-356.58	-397.40	40°07'53.141"N	104°51'29.067"W	1.58	
4053.00	13.400	228.100	3989.29	-373.16	-370.10	-412.33	40°07'53.008"N	104°51'29.260"W	0.37	
4140.00	13.800	221.100	4073.86	-387.81	-384.65	-426.66	40°07'52.864"N	104°51'29.444"W	1.95	
4225.00	14.100	224.100	4156.35	-402.99	-399.73	-440.53	40°07'52.715"N	104°51'29.623"W	0.92	
4314.00	15.100	229.500	4242.48	-418.43	-415.04	-456.89	40°07'52.563"N	104°51'29.833"W	1.90	
4401.00	13.800	222.000	4326.73	-433.62	-430.12	-472.45	40°07'52.415"N	104°51'30.034"W	2.62	
4486.00	12.100	222.700	4409.57	-447.79	-444.20	-485.28	40°07'52.275"N	104°51'30.199"W	2.01	
4572.00	13.000	227.200	4493.52	-461.09	-457.39	-498.49	40°07'52.145"N	104°51'30.369"W	1.54	
4656.00	14.600	230.600	4575.09	-474.34	-470.53	-513.60	40°07'52.015"N	104°51'30.563"W	2.13	
4741.00	15.800	225.400	4657.12	-489.39	-485.46	-530.12	40°07'51.868"N	104°51'30.776"W	2.14	
4829.00	14.900	222.600	4741.98	-506.25	-502.20	-546.31	40°07'51.702"N	104°51'30.984"W	1.32	
4914.00	13.500	225.900	4824.38	-521.31	-517.15	-560.83	40°07'51.554"N	104°51'31.171"W	1.90	
5001.00	13.300	226.200	4909.01	-535.41	-531.14	-575.35	40°07'51.416"N	104°51'31.358"W	0.24	
5086.00	13.400	228.200	4991.72	-548.85	-544.48	-589.75	40°07'51.284"N	104°51'31.544"W	0.56	
5174.00	14.300	226.100	5077.16	-563.29	-558.81	-605.18	40°07'51.143"N	104°51'31.742"W	1.17	
5259.00	12.900	226.200	5159.77	-577.25	-572.66	-619.59	40°07'51.006"N	104°51'31.928"W	1.65	
5344.00	11.300	226.800	5242.88	-589.61	-584.93	-632.51	40°07'50.885"N	104°51'32.094"W	1.89	
5430.00	9.200	225.200	5327.50	-600.31	-595.54	-643.54	40°07'50.780"N	104°51'32.236"W	2.46	
5515.00	7.500	225.000	5411.60	-609.08	-604.25	-652.28	40°07'50.694"N	104°51'32.349"W	2.00	
5602.00	6.700	226.500	5497.93	-616.65	-611.76	-659.98	40°07'50.619"N	104°51'32.448"W	0.94	
5688.00	5.300	224.200	5583.46	-623.00	-618.06	-666.39	40°07'50.557"N	104°51'32.530"W	1.65	
5773.00	4.400	223.100	5668.15	-628.23	-623.25	-671.35	40°07'50.506"N	104°51'32.594"W	1.06	
5858.00	3.700	224.200	5752.94	-632.61	-627.60	-675.49	40°07'50.463"N	104°51'32.647"W	0.83	
5945.00	3.000	227.100	5839.79	-636.20	-631.16	-679.11	40°07'50.428"N	104°51'32.694"W	0.83	
6117.00	2.000	227.600	6011.63	-641.32	-636.25	-684.63	40°07'50.377"N	104°51'32.765"W	0.58	
6287.00	1.300	233.300	6181.56	-644.50	-639.40	-688.37	40°07'50.346"N	104°51'32.813"W	0.42	
6458.00	0.400	243.300	6352.53	-645.95	-640.83	-690.45	40°07'50.332"N	104°51'32.840"W	0.53	
6628.00	0.400	342.400	6522.53	-645.65	-640.53	-691.16	40°07'50.335"N	104°51'32.849"W	0.36	
6713.00	2.000	346.300	6607.51	-643.93	-638.81	-691.60	40°07'50.352"N	104°51'32.855"W	1.88	
6799.00	2.300	1.000	6693.45	-640.75	-635.63	-691.93	40°07'50.384"N	104°51'32.859"W	0.73	
6884.00	6.000	356.200	6778.21	-634.61	-629.49	-692.19	40°07'50.444"N	104°51'32.862"W	4.37	
6971.00	8.800	2.000	6864.48	-623.43	-618.30	-692.26	40°07'50.555"N	104°51'32.863"W	3.33	
7075.00	16.200	4.300	6965.95	-600.97	-595.85	-690.90	40°07'50.777"N	104°51'32.846"W	7.13	
7142.00	28.300	355.700	7027.86	-575.71	-570.59	-691.39	40°07'51.026"N	104°51'32.852"W	18.66	
7229.00	39.600	349.000	7099.93	-527.81	-522.63	-698.25	40°07'51.500"N	104°51'32.940"W	13.66	
7314.00	50.000	346.100	7160.17	-469.55	-464.27	-711.28	40°07'52.077"N	104°51'33.108"W	12.47	
7399.00	62.800	353.200	7207.15	-400.15	-394.78	-723.64	40°07'52.764"N	104°51'33.267"W	16.57	
7486.00	70.100	359.800	7241.92	-320.69	-315.28	-728.37	40°07'53.549"N	104°51'33.328"W	10.89	
7574.00	72.800	1.400	7269.92	-237.27	-231.87	-727.49	40°07'54.374"N	104°51'33.317"W	3.52	
7661.00	83.100	0.100	7288.06	-152.31	-146.91	-726.39	40°07'55.213"N	104°51'33.303"W	11.93	
7693.00†	86.393	0.007	7290.99	-120.45	-115.05	-726.37	40°07'55.528"N	104°51'33.303"W	10.29	7" Casing Point
7730.00	90.200	359.900	7292.09	-83.47	-78.07	-726.40	40°07'55.893"N	104°51'33.303"W	10.29	
7817.00	89.300	0.500	7292.47	3.53	8.93	-726.09	40°07'56.753"N	104°51'33.299"W	1.24	

Actual Wellpath Report

BARCLAY 3N-14HZ AWP

Page 4 of 6

REFERENCE WELLPATH IDENTIFICATION

Operator	KERR-MCGEE OIL & GAS ONSHORE LP	Slot	SLOT#10 BARCLAY 3N-14HZ (577'FSL & 2253'FEL, SEC.14)
Area	COLORADO	Well	BARCLAY 3N-14HZ
Field	WELD COUNTY (KERR MCGEE)	Wellbore	BARCLAY 3N-14HZ AWB <12460>
Facility	SEC.14-T2N-R67W		

WELLPATH DATA (140 stations)

MD [ft]	Inclination [°]	Azimuth [°]	TVD [ft]	Vert Sect [ft]	North [ft]	East [ft]	Latitude	Longitude	DLS [°/100ft]	Comments
7902.00	88.600	1.700	7294.02	88.50	93.89	-724.46	40°07'57.593"N	104°51'33.278"W	1.63	
7989.00	89.000	1.800	7295.85	175.46	180.83	-721.80	40°07'58.452"N	104°51'33.244"W	0.47	
8076.00	88.300	2.000	7297.90	262.41	267.76	-718.92	40°07'59.311"N	104°51'33.207"W	0.84	
8162.00	88.900	1.800	7300.00	348.35	353.69	-716.07	40°08'00.160"N	104°51'33.170"W	0.74	
8247.00	87.800	2.000	7302.44	433.29	438.60	-713.25	40°08'00.999"N	104°51'33.134"W	1.32	
8332.00	88.300	1.800	7305.34	518.21	523.51	-710.44	40°08'01.838"N	104°51'33.098"W	0.63	
8417.00	88.600	1.500	7307.64	603.16	608.44	-707.99	40°08'02.678"N	104°51'33.066"W	0.50	
8504.00	89.200	1.400	7309.31	690.13	695.40	-705.79	40°08'03.537"N	104°51'33.038"W	0.70	
8589.00	87.800	2.400	7311.53	775.07	780.32	-702.97	40°08'04.376"N	104°51'33.002"W	2.02	
8761.00	88.400	2.000	7317.23	946.89	952.10	-696.37	40°08'06.074"N	104°51'32.917"W	0.42	
8848.00	88.600	1.800	7319.51	1033.83	1039.02	-693.49	40°08'06.933"N	104°51'32.880"W	0.33	
8934.00	89.400	1.700	7321.01	1119.80	1124.96	-690.86	40°08'07.782"N	104°51'32.846"W	0.94	
9019.00	90.300	1.800	7321.23	1204.77	1209.92	-688.27	40°08'08.621"N	104°51'32.813"W	1.07	
9104.00	88.900	1.800	7321.83	1289.74	1294.88	-685.60	40°08'09.461"N	104°51'32.778"W	1.65	
9189.00	89.400	1.700	7323.09	1374.71	1379.83	-683.00	40°08'10.300"N	104°51'32.745"W	0.60	
9276.00	89.800	1.700	7323.70	1461.69	1466.79	-680.42	40°08'11.160"N	104°51'32.712"W	0.46	
9362.00	90.400	1.900	7323.55	1547.66	1552.74	-677.72	40°08'12.009"N	104°51'32.677"W	0.74	
9447.00	90.700	1.300	7322.73	1632.64	1637.71	-675.35	40°08'12.849"N	104°51'32.646"W	0.79	
9532.00	90.700	2.100	7321.69	1717.61	1722.66	-672.83	40°08'13.688"N	104°51'32.614"W	0.94	
9619.00	88.800	2.200	7322.07	1804.57	1809.60	-669.56	40°08'14.548"N	104°51'32.572"W	2.19	
9791.00	89.600	1.500	7324.47	1976.50	1981.49	-664.01	40°08'16.246"N	104°51'32.501"W	0.62	
9876.00	88.600	359.700	7325.81	2061.48	2066.47	-663.12	40°08'17.086"N	104°51'32.489"W	2.42	
10046.00	89.800	359.000	7328.18	2231.43	2236.44	-665.05	40°08'18.766"N	104°51'32.514"W	0.82	
10217.00	89.500	358.500	7329.23	2402.35	2407.39	-668.78	40°08'20.455"N	104°51'32.562"W	0.34	
10302.00	89.300	358.100	7330.12	2487.29	2492.35	-671.30	40°08'21.295"N	104°51'32.595"W	0.53	
10387.00	90.700	358.100	7330.12	2572.22	2577.30	-674.12	40°08'22.134"N	104°51'32.631"W	1.65	
10473.00	92.200	0.600	7327.94	2658.17	2663.26	-675.09	40°08'22.983"N	104°51'32.643"W	3.39	
10555.00	91.600	1.300	7325.22	2740.12	2745.20	-673.74	40°08'23.793"N	104°51'32.626"W	1.12	
10642.00	92.000	0.800	7322.49	2827.07	2832.14	-672.14	40°08'24.652"N	104°51'32.606"W	0.74	
10727.00	92.400	0.600	7319.23	2912.00	2917.07	-671.10	40°08'25.492"N	104°51'32.592"W	0.53	
10812.00	91.500	0.900	7316.33	2996.95	3002.02	-669.99	40°08'26.331"N	104°51'32.578"W	1.12	
10899.00	92.600	0.500	7313.22	3083.89	3088.95	-668.93	40°08'27.190"N	104°51'32.564"W	1.35	
10985.00	91.800	1.500	7309.92	3169.82	3174.87	-667.43	40°08'28.039"N	104°51'32.545"W	1.49	
11069.00	90.600	1.100	7308.16	3253.79	3258.83	-665.52	40°08'28.869"N	104°51'32.520"W	1.51	
11156.00	90.600	1.600	7307.25	3340.78	3345.80	-663.47	40°08'29.728"N	104°51'32.494"W	0.57	
11244.00	91.600	2.300	7305.56	3428.73	3433.73	-660.48	40°08'30.597"N	104°51'32.456"W	1.39	
11329.00	91.800	2.000	7303.04	3513.65	3518.64	-657.29	40°08'31.436"N	104°51'32.415"W	0.42	
11416.00	91.700	1.000	7300.38	3600.60	3605.57	-655.02	40°08'32.295"N	104°51'32.385"W	1.15	
11503.00	90.700	358.500	7298.56	3687.56	3692.54	-655.40	40°08'33.155"N	104°51'32.390"W	3.09	
11588.00	91.000	359.400	7297.30	3772.52	3777.51	-656.95	40°08'33.995"N	104°51'32.410"W	1.12	
11674.00	91.500	0.400	7295.42	3858.50	3863.49	-657.10	40°08'34.844"N	104°51'32.412"W	1.30	
11759.00	91.900	0.700	7292.90	3943.46	3948.45	-656.29	40°08'35.684"N	104°51'32.402"W	0.59	
11844.00	92.700	1.000	7289.49	4028.39	4033.37	-655.03	40°08'36.523"N	104°51'32.386"W	1.01	
11931.00	92.400	0.000	7285.62	4115.30	4120.28	-654.27	40°08'37.382"N	104°51'32.376"W	1.20	
12019.00	93.100	0.200	7281.40	4203.20	4208.18	-654.12	40°08'38.251"N	104°51'32.374"W	0.83	

Actual Wellpath Report

BARCLAY 3N-14HZ AWP

Page 5 of 6

REFERENCE WELLPATH IDENTIFICATION

Operator	KERR-MCGEE OIL & GAS ONSHORE LP	Slot	SLOT#10 BARCLAY 3N-14HZ (577'FSL & 2253'FEL, SEC.14)
Area	COLORADO	Well	BARCLAY 3N-14HZ
Field	WELD COUNTY (KERR MCGEE)	Wellbore	BARCLAY 3N-14HZ AWB <12460>
Facility	SEC.14-T2N-R67W		

WELLPATH DATA (140 stations)

MD [ft]	Inclination [°]	Azimuth [°]	TVD [ft]	Vert Sect [ft]	North [ft]	East [ft]	Latitude	Longitude	DLS [°/100ft]	Comments
12103.00	92.800	359.900	7277.07	4287.09	4292.07	-654.04	40°08'39.079"N	104°51'32.373"W	0.50	
12191.00	92.100	359.700	7273.31	4375.00	4379.99	-654.35	40°08'39.948"N	104°51'32.377"W	0.83	
12276.00	91.400	359.800	7270.72	4459.95	4464.94	-654.72	40°08'40.788"N	104°51'32.382"W	0.83	
12407.00	90.700	359.800	7268.32	4590.92	4595.92	-655.18	40°08'42.082"N	104°51'32.388"W	0.53	Last BHI MWD+IFR Surveys
12460.00	90.700	359.800	7267.67	4643.92	4648.92	-655.36	40°08'42.606"N	104°51'32.390"W	0.00	Projection to Bit

HOLE & CASING SECTIONS - Ref Wellbore: BARCLAY 3N-14HZ AWB <12460> Ref Wellpath: BARCLAY 3N-14HZ AWP

String/Diameter	Start MD [ft]	End MD [ft]	Interval [ft]	Start TVD [ft]	End TVD [ft]	Start N/S [ft]	Start E/W [ft]	End N/S [ft]	End E/W [ft]
13.5in Open Hole	16.00	1135.00	1119.00	16.00	1134.97	0.00	0.00	3.42	2.19
9.625in Casing Surface	16.00	1125.00	1109.00	16.00	1124.97	0.00	0.00	3.33	2.14
8.75in Open Hole	1135.00	7701.00	6566.00	1134.97	7291.43	3.42	2.19	-107.06	-726.37
7in Casing Intermediate	16.00	7693.00	7677.00	16.00	7290.99	0.00	0.00	-115.05	-726.37
6.125in Open Hole	7701.00	12460.00	4759.00	7291.43	7267.67	-107.06	-726.37	4648.92	-655.36

TARGETS

Name	TVD [ft]	North [ft]	East [ft]	Grid East [US ft]	Grid North [US ft]	Latitude	Longitude	Shape
SEC.11-T2N-R67W SECTION LINES	-1.00	-0.71	90.02	3179974.47	1291732.06	40°07'56.658"N	104°51'22.792"W	polygon
SEC.14-T2N-R67W SECTION LINES	-1.00	-0.30	29.98	3179914.43	1291732.03	40°07'56.662"N	104°51'23.565"W	polygon
BARCLAY 3N-14HZ LANDBOX	7299.00	0.00	0.00	3179884.44	1291732.12	40°07'56.665"N	104°51'23.951"W	polygon
BARCLAY 3N-14HZ BHL ON PLAT REV-1 (50'FNL & 2300'FWL, SEC.14)	7328.00	4650.26	-661.45	3179189.31	1296377.26	40°08'42.619"N	104°51'32.468"W	point

WELLPATH COMPOSITION - Ref Wellbore: BARCLAY 3N-14HZ AWB <12460> Ref Wellpath: BARCLAY 3N-14HZ AWP

Start MD [ft]	End MD [ft]	Positional Uncertainty Model	Log Name/Comment	Wellbore
16.00	1089.00	ISCWSA MWD, Rev. 2 (Standard)	CATHEDRAL MWD SURVEYS <69-1089>	BARCLAY 3N-14HZ AWB <12460>
1089.00	7661.00	NaviTrak (MAGCORR,IFR)	BHI MWD+IFR SURVEYS 8 3/4" HOLE <1176-7661>	BARCLAY 3N-14HZ AWB <12460>
7661.00	12407.00	NaviTrak (MAGCORR,IFR)	BHI MWD+IFR SURVEY 6 1/8" HOLE <7730-12407>	BARCLAY 3N-14HZ AWB <12460>
12407.00	12460.00	Blind Drilling (std)	Projection to bit	BARCLAY 3N-14HZ AWB <12460>

Actual Wellpath Report

BARCLAY 3N-14HZ AWP

Page 6 of 6

REFERENCE WELLPATH IDENTIFICATION

Operator	KERR-MCGEE OIL & GAS ONSHORE LP	Slot	SLOT#10 BARCLAY 3N-14HZ (577'FSL & 2253'FEL, SEC.14)
Area	COLORADO	Well	BARCLAY 3N-14HZ
Field	WELD COUNTY (KERR MCGEE)	Wellbore	BARCLAY 3N-14HZ AWB <12460>
Facility	SEC.14-T2N-R67W		

WELLPATH COMMENTS

MD [ft]	Inclination [°]	Azimuth [°]	TVD [ft]	Comment
16.00	0.000	343.200	16.00	Tie-On
62.00	0.200	343.200	62.00	Begin CATHEDRAL MWD Surveys
1089.00	0.700	67.300	1088.97	Tie-Into CATHEDRAL MWD Surveys
1176.00	0.900	351.500	1175.97	Begin BHI MWD+IFR Surveys
7693.00	86.393	0.007	7290.99	7" Casing Point
12407.00	90.700	359.800	7268.32	Last BHI MWD+IFR Surveys
12460.00	90.700	359.800	7267.67	Projection to Bit