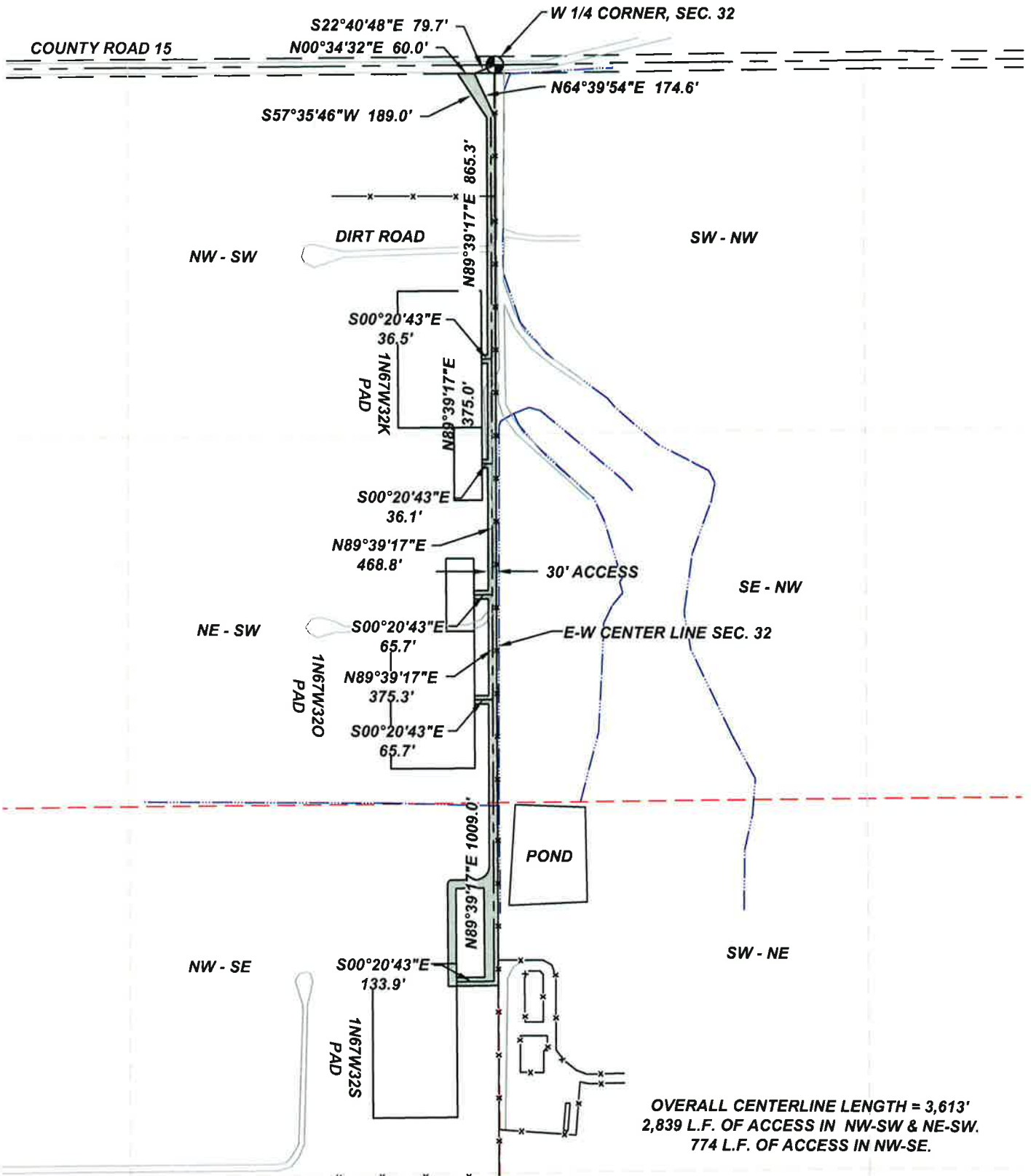
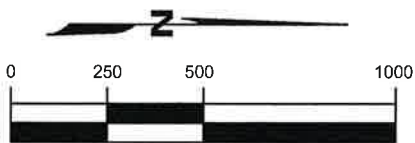


# ACCESS ROAD DRAWING

SECTION 32, TOWNSHIP 1 NORTH, RANGE 67 WEST, 6TH P.M.



OVERALL CENTERLINE LENGTH = 3,613'  
 2,839 L.F. OF ACCESS IN NW-SW & NE-SW.  
 774 L.F. OF ACCESS IN NW-SE.



SCALE: 1"=500'

FIELD DATE  
09/11/2014  
 EXHIBIT DATE  
09/13/2014

SCALE: 1"=600'    PROJ. No. 34481    Dwg. No. JACOBUCCI09092014.dwg



SURVEYING AND MAPPING LLC (SAM)  
 555 Zang St., Suite 210  
 Lakewood CO. 80228  
 Ph: (303) 988-5852  
 Fax: (303) 988-2195  
 EMAIL: SAM@SAM.BIZ

JACOBUCCI 1N67W32K, 1N67W32O, 1N67W32S

LOCATION:  
 SECTION 32, T1N, R67W, 6TH P.M.  
 WELD COUNTY, COLORADO

DRAWN BY: TWK    CHECKED BY: T. CARLSON    SHEET No. 1 OF 1