



Well Name: RGU 531-26-198
Surface Location: RGU 42-26-198
North American Datum 1983 , US State Plane 1983 , Colorado Central Zone
Ground Elevation: 6622.00

+N/-S
0.00

+E/-W
0.00

Northing
1778115.70

Easting
2199611.50

Latitude
39.935220

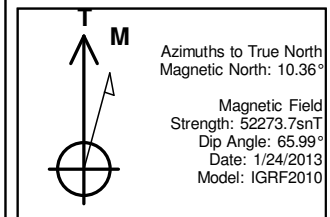
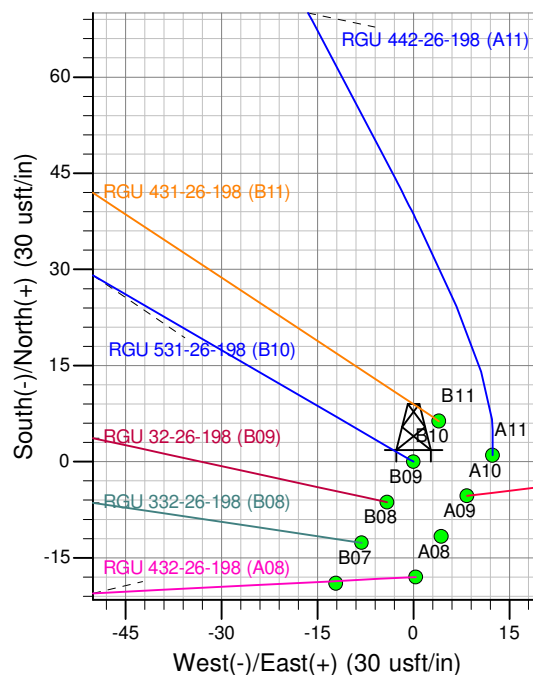
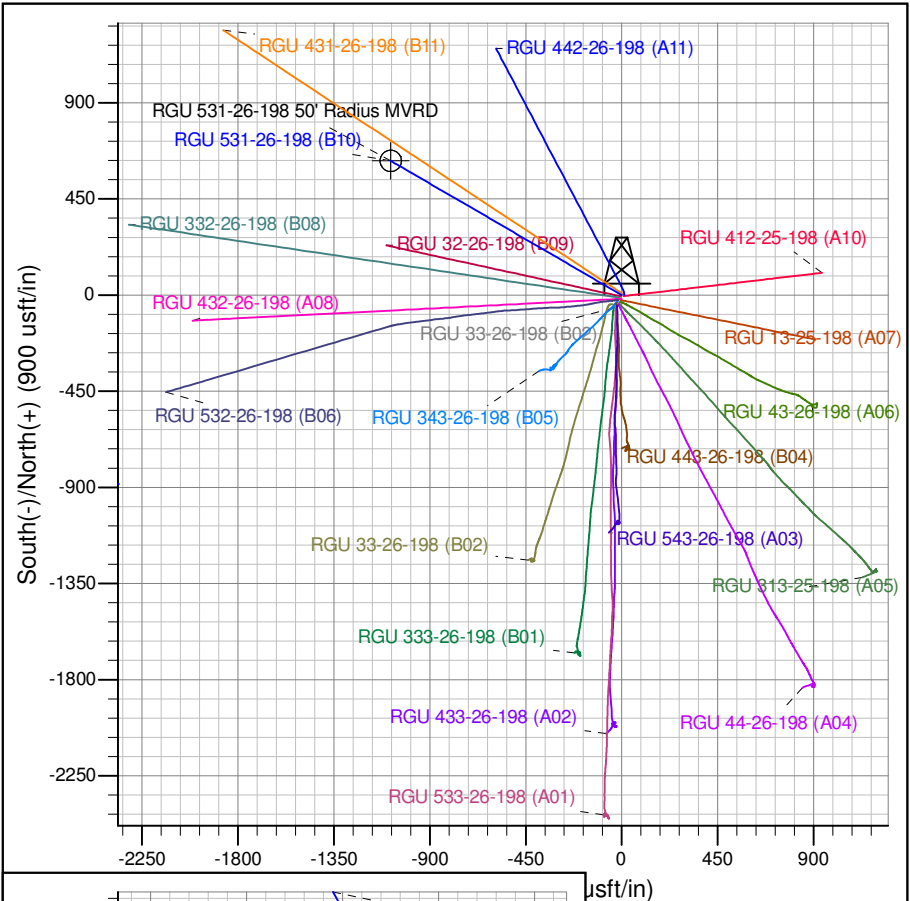
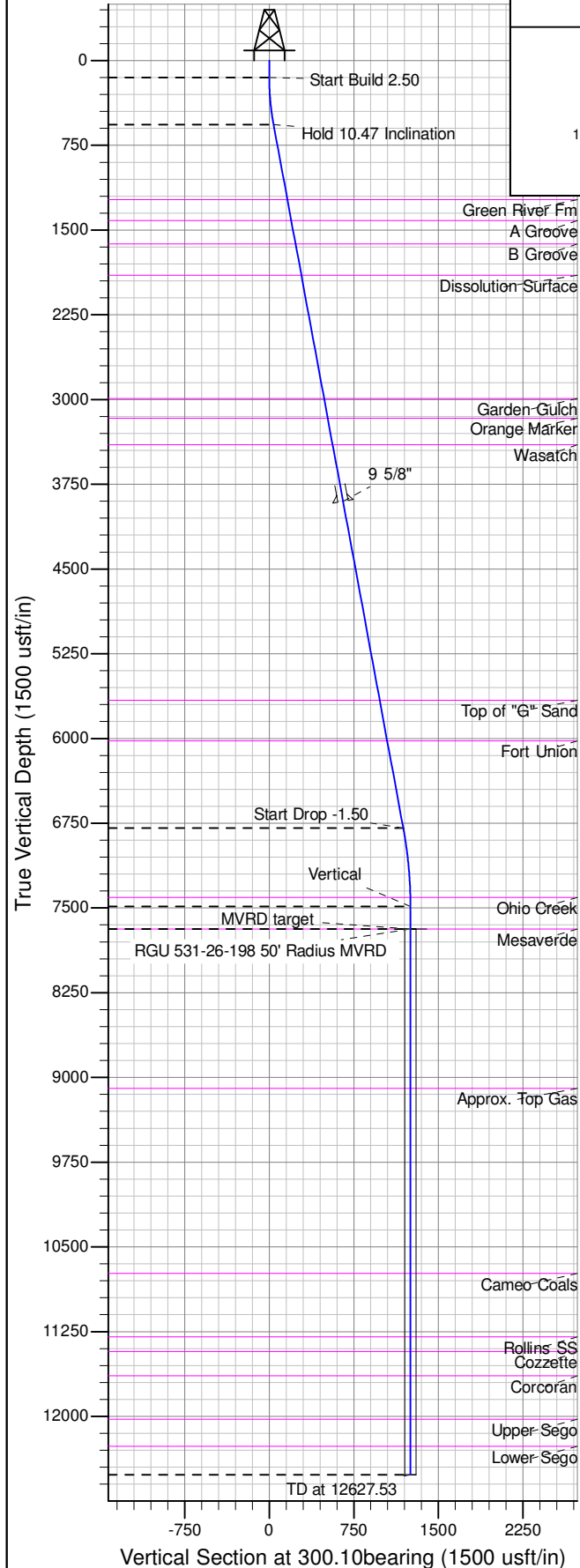
Longitude
-108.354522

Slot
B10

KB @ 6646.00usft (HP 318)

ANNOTATIONS

TVD	MD	Inc	Azi	+N/-S	+E/-W	Vsect	Departure	Annotation
150.00	150.00	0.00	0.00	0.00	0.00	0.00	0.00	Start Build 2.50
566.32	568.65	10.47	300.10	19.12	-32.99	38.13	38.13	Hold 10.47 Inclination
6792.13	6899.79	10.47	300.10	595.92	-1027.98	1188.21	1188.21	Start Drop -1.50
7486.00	7597.53	0.00	0.00	627.79	-1082.96	1251.76	1251.76	Vertical
7686.00	7797.53	0.00	0.00	627.79	-1082.96	1251.76	1251.76	MVRD target
12516.00	12627.53	0.00	0.00	627.79	-1082.96	1251.76	1251.76	TD at 12627.53



Project: RG 26-01S-098W
Site: RGU 42-26-198
Well: RGU 531-26-198
Design #3 8May15 sam